

Prairie View A&M University

Digital Commons @PVAMU

---

PV Panther Newspapers

Publications

---

4-16-1981

## Panther - April 1981 - Vol. LV No. 17

Prairie View A&M University

Follow this and additional works at: <https://digitalcommons.pvamu.edu/pv-panther-newspapers>

---

### Recommended Citation

Prairie View A&M University. (1981). Panther - April 1981 - Vol. LV No. 17., *Vol. LV No. 17* Retrieved from <https://digitalcommons.pvamu.edu/pv-panther-newspapers/859>

This Book is brought to you for free and open access by the Publications at Digital Commons @PVAMU. It has been accepted for inclusion in PV Panther Newspapers by an authorized administrator of Digital Commons @PVAMU. For more information, please contact [hvkoshy@pvamu.edu](mailto:hvkoshy@pvamu.edu).



# The PANTHER

PRAIRIE VIEW A&M  
UNIVERSITY  
PRAIRIE VIEW, TEXAS

Volume 55  
Number 17

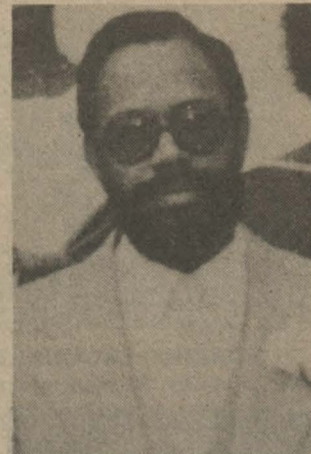
April 16-21,  
1981

## Craig Washington is Commencement Speaker

Prairie View A&M graduate Craig Washington will be the principal speaker for Commencement Exercises scheduled Sunday May 3, President A. I. Thomas announced.

State Representative Washington of Houston is regarded as one of the top legislators in the State Capital and is currently being considered for the position of Speaker of the House. He is a close friend of Speaker Bill Clayton, who recently named Washington and important national legislative committee.

Approximately 500 graduating seniors will receive degrees, diplomas and awards during the ceremonies. Graduates in the Army and Navy ROTC programs will also



Washington  
To Address Graduates

receive commissions in their respective branches.

## It's Campus Career Carnival Time



ACADEMIC HONORS — Banquet speaker Dr. Mattie Londow congratulates students for their achievement in college studies.

With a theme of "Today's Students-Tomorrow's Leaders," the 7th Annual Prairie View A&M University Campus Career Carnival '81 will be held Saturday April 25 at the Little Dome Fieldhouse.

Several hundred high school juniors and seniors from all over the country are expected to attend the 9 a.m. to 4 p.m. informative and festive event, says Ms. Mary E. Gooch, Associate Director of Admissions.

For the high school students who desire to continue their education, there will be special workshops to aid parents, counselors, and other high school personnel.

"The potential high school graduate and parents will learn about available scholarships, grants, financial aid and much

more in the one day workshop," Ms. Gooch says.

Prospective students will be able to complete admission procedures, including interviews, during the workshop day.

An annual feature will be selected of "Mr. Success," and "Miss Success," in a talent contest with winners receiving a trophy and a Presidential Scholarship Award. Entrants must have G.P.A. or 3.0 or above, have leadership ability, be a Texas resident, and submit an application for admission along with test scores and high school transcript.

Trophies will be presented to the school with the largest student representation and a first and second place trophy for the schools traveling the greatest distance.

Entertainment will be provided by the Prairie View A&M University Jazz Band, the Drama Department, and other university personalities.

Special summer Scholarship Institutes include pre-medical, pre-dentistry, experiment in living, and chemistry, mathematics and engineering concepts.

supported by major industrial corporations through contributions to this national scholarship fund. These corporations are the users of engineers and recruit minority engineers for technical and managerial careers.

## PV Receives Grant for Minorities in Engineering

Prairie View A&M University, through its College of Engineering, has received a Grant of \$134,750 from the National Action Council for Minorities in Engineering, Inc. (NACME). This Grant which was awarded for the 1980-81 academic year, is for Incentive Scholarships. These scholarships are to be awarded to minority engineering students at Prairie View A&M University. The scholarships are awarded annually to students who need financial assistance and have demonstrated the academic and intellectual ability to succeed in engineering.

During the 1980-81 academic year, NACME has distributed \$2.1 million in grants to 2,800 students at 114 engineering schools. This grants program, formerly operated by The National Fund For Minority Engineering Students, was established in 1974 as the financial catalyst for increasing the nation's supply of minority engineers. Prairie View A&M University was one of the charter members of this program with an initial grant of \$2,500 which provided incentive scholarships to four students. This year there are 181 students

receiving scholarship assistance from this program.

NACME makes awards to engineering schools that demonstrate a commitment to recruiting and graduating increasing numbers of students from the underrepresented minority groups: Blacks, Hispanic (Puerto Ricans, Mexican Americans and others) and American Indians. Prairie View A&M University is a major source of engineering graduates who come from these underrepresented minority groups.

The grants program, which is operated by NACME, is

## Parents Day to Be Observed April 26

The annual observance of Parents' Day is scheduled for April 26. The event is sponsored by the parents and guardians' association of Prairie View A&M University.

An outstanding feature of the events is the presentation of "Parents of the Year." Parents of university students

on all levels participate in activities of the Association.

The day's activities include general sessions, a special luncheon, workshop sessions with students and a closing reception.

Mrs. Delia M. Hunt is chairman of the steering committee and Rev. W. Van Johnson is co-chairman.

## Higher Education Funding Is Major Issue in Texas

The Permanent University Fund (PUF), which uses state-owned oil and gas wells to endow the University of Texas and Texas A&M Systems, jumped in value 2 weeks ago by some \$52 million.

Sparked by a record setting sale of oil and gas leases the PUF is now worth \$1.378 billion.

And now there's speculation about new attempts to divide the constitutionally protected PUF and share the money with some 19 other under-funded state colleges and universities.

House Speaker Bill Clayton, has filed a constitutional amendment similar to others already in the hooper which will create a Higher Education Permanent Fund, financed by revenues from a 3-cent ad valorem tax.

Clayton, however, wants "double dipping" for predominantly black schools Prairie View A&M and Texas Southern University by allowing general revenue appropriations to those 2 institutions. He admitted it was a way to gain support from black legislators to revise the higher education construction system.

## Seven Vie for Miss PV Title

Ten beautiful young ladies will vie for the 1981 Miss Prairie View A&M University

Scholarship Pageant slated for Thursday, April 23 in the University Fieldhouse.

The lucky winner will then automatically compete in the Miss Texas Scholarship Pageant to be held later.

Entrants, including hometown and the talents that brought them this far in the 12 anniversary of affiliation with the state pageant are:

Gladys Marie Branch, 20, Port Arthur, singing; Alice Christine Clemons, 21, Chicago, solo ballet; Deidre Dickson, 20, Houston, singing; Marilyn Gail Morris, 20, San Antonio, dramatic interpretation; Tina Marie Seriale,

19, Highland, flute; Vanessa Gail Walker, 19, Prairie View, singing; and Cheryl A. Bonner, Houston, singing and dancing.

The reigning Miss Prairie View, Matalie McKinney, will be on hand to help crown her successor.

Television coverage of the pageant is expected to be provided again by KPRC-TV, Houston.

The MC for the occasion will be Jo Ann Vallie Rush, TV personality and anchorperson, Channel 2-Houston. Judges will include two representatives from the Miss Texas Scholarship pageant committee from Ft. Worth, former Miss PV and two outstanding personalities in the greater-Houston area.

In addition to the outstanding talent of the contestants, the program, scheduled at 8:00 p.m., will feature additional talent among PV students.



Cheryl Bonner



Gladys Branch



Alice Clemons



Deidre Dixon



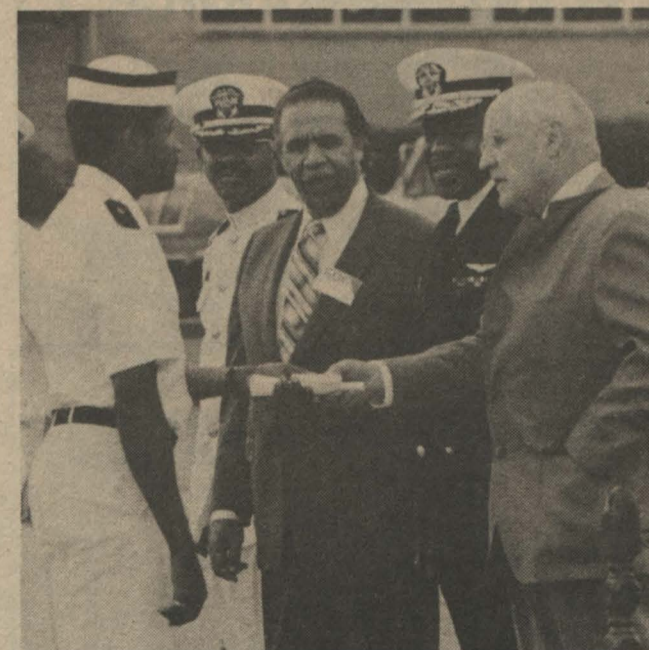
Gail Morris



Tina Seriale



Vanessa Walker



NROTC SPRING REVIEW — Midshipmen collected many awards for outstanding performance as pictured above with Rear Admiral Benjamin T. Hacker joining President Thomas and special guest.

**ALPHA MU GAMMA**

FOREIGN LANGUAGE HONOR SOCIETY

NATIONAL CONVENTION  
APRIL 1-3



**FOREIGN LANGUAGE TEACHERS CONVENE** — Several participants posed for this photo by the huge welcome sign at the close of the two day convention.



**Dr. John Fonseca**  
National President of Alpha Mu Gamma



**ALPHA MU GAMMA DAY IN HOUSTON** — Representing Houston's Mayor, Napoleon Johnson holds city proclamation officially declaring the special day in Houston.

**ATTENTION:**

Engineers, Programmers, Analysts, Business Administration, Math, Physicists, Chemists, etc., with BS degree and 0-10 years experience — plan to attend M. T. I. Assoc. Career Conference on April 24-25 in Houston. Many companies will be recruiting. Send resume to...

**MTI ASSOC.**

P. O. Box 58571  
Houston, Texas  
or Call 486-5748

**Alpha Mu Gamma Group Holds National Meet at PV**

The National Convention of Alpha Mu Gamma (Foreign Language Honor Society) held its 50th Anniversary Convention on the campus of Prairie View A&M University, Thursday and Friday, April 2-3.

Representatives of colleges and universities across the nation attended the two-day meeting which featured sessions on the campus. The entire program included general sessions, an initiation ceremony, 2 luncheons, a banquet, and a reception that was held on Thursday at the President's campus house. The group departed for Houston on Friday and toured five college campuses, the Medical Center Complex, the Astrodome Complex and the Galleria.

Special guest attending the two-day convention was the National President of Alpha Mu Gamma, Dr. John Fonseca, along with his wife and daughter of California, and other distinguished members from Ohio, Mississippi, Wyoming, Illinois, Louisiana, and Texas.

New members of Alpha Mu Gamma include the following students who have obtained grades of 2A's and 1B after

three semesters of a Foreign Language. Lura Barley, Fredrick Bowers, Dorothy Butler, Vincent Calhoun, Wanda Davies, Raymond Dillard, Yvonne Douglas, Carrie Dukes, Moses Dukuky, Mark Edwards, Michele Evans, Chris Ferguson, Kim Goynes, Velda Guillory, Vanessa Hardaway, Rachelle Hillard, Ronald Jackson, Jo Ann Jones, Deidra Lewis, Michael Love, Cynthia Parker, Portia Patillo, Anthony Penn, Lillian Randle, Hedy Ratcliff, Charles Robins, Velva Souls, Jacquelyn Stephens and Harold Taylor.

Mrs. Mamie McCloud and Mrs. Ollivette Higgs are sponsors of Alpha Mu Gamma and were assisted by Dr. A. I. Thomas, department members, personnel in the Office of Academic Affairs, faculty members and staff.

The convention was a success and a very memorable one. We the members of Alpha Mu Gamma would like to extend a special thank you to our sponsors, Mrs. McCloud and Mrs. Higgs for such a success. Congratulations to all members and a special congratulations to the new members.

Jo Ann Jones



**VISITING ADMIRAL** — Rear Admiral Benjamin T. Hacker is Commander, Military Enlistment Processing Command, Fort Sheridan, Illinois. He served as reviewing officer and guest speaker for "Spring Review" on April 9.

**Chapel Choir Celebrates First Birthday**

The Prairie View A&M University's Chapel Choir prayerfully and gratefully announces its celebration of one year of existence on the Prairie View campus, Sunday April 12, 1981 at 3:00 p.m. in the Memorial Student Center Ballroom. The choir will be in concert under the direction of Miss Loretta J. Johnson and Mr. Jerome A. Washington. Other guests have been invited to attend from Prairie View and neighboring cities.

The choir was organized on Wednesday, September 19, 1980 by Miss Linda Washington and Mr. Jerome A. Washington with the help of Miss Loretta J. Johnson with eight persons present. The choir now has twenty-five members who are asking the support of the faculty, staff and entire student body as well as the community.

Pessimists grumble because roses have thorns; optimists are thankful that thorns have roses.



Houston Baptist College students attend workshop.

**Home Economics College Conducts Dietetic Weekend**

The College of Home Economics, under the direction of the Dean, Dr. Flossie M. Byrd, conducted a "Dietetic Weekend Encampment" on April 11, 1981. It was held between the hours of 8:00 a.m. and 2:00 p.m. in the Living Center of the Elizabeth May Hall.

This event was designed to inform potential college students who are interested in Careers in Food, Nutrition and Food Service Management of the advantages and opportunities available through a major in Food, Nutrition and Institutional Administration at Prairie View A&M University. The students, along with their

parents, will be given procedures for admission into the University, as well as a preview of the varied academic personal-social, and career experiences provided in the College of Home Economics.

The following students and staff members will participate in the day's program: Diane Bobb, Elizabeth Prater, Kathi Josey, Cheryl Adkins, Dr. F. M. Byrd, Mr. Robert Cole, Mrs. Cathy Harris, Mrs. Lula Kinney, Mr. Robert Harris and Lt. Clarence Gray.

This program is sponsored by a Grant from the American Dietetic Association.

Submitted by Barbara G. Dixon

**Marketing Majors Attend Conference**

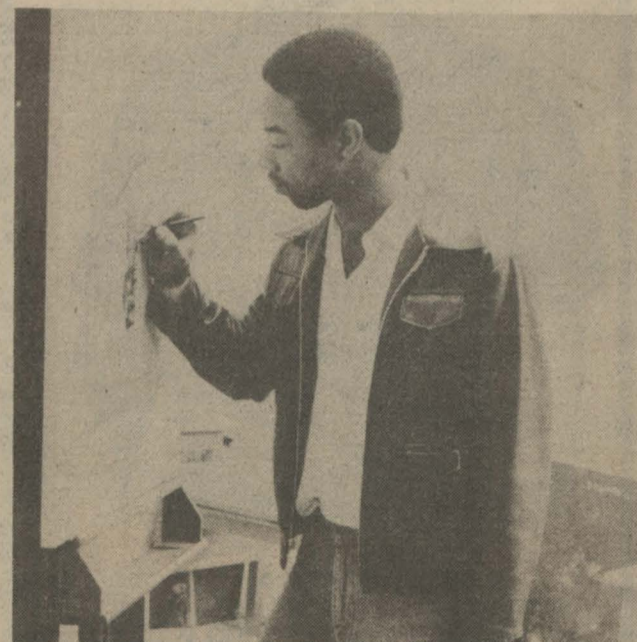
The Houston Advertising Federation sponsored a Student Conference for undergraduate students interested in the field of advertising. With over 150 schools invited, faculty and student representation from the College of Business, PVA&MU, attended the conference which was held on March 26-27, 1981 at the Galleria Plaza Hotel in Houston, Texas.

Outstanding highlights of the Conference included special presentations given by advertising agencies and their clientele such as Shell Oil Company, Houston National Bank and Foley's Department Store. In addition, career opportunities in the professional field of advertising were also presented. Some of the careers available in advertising include such positions as an account executive, a public relations person, a production artist, a sales marketing manager and a broadcast media buyer.

Attending the Student Conference were Beverly Jackson, Sylvia Holt and Derrick Owens, all of which are marketing majors, and Mrs. Marilyn Emanuel Instructor, Department of Management and Marketing.

**FINAL CALL**  
1981 Yearbook Photos of Campus Organizations

**Student Art Exhibit**



**Keith Curry** — Prairie View Art Associate President prepares for Student exhibit.

In celebration of the Humanities during the month of April, the Prairie View Art Association will sponsor a Student Art Exhibition entitled "A Montage of the Arts." It will consist of advertisements, watercolors, ceramics and designs.

A special exhibit of childrens art by Mrs. Carolyn Talley's 3rd grade class will also be featured.

The exhibit will be on display in the W. R. Bank Library, Second Floor Gallery, Prairie View A&M University, April 13 through May 13, 1981.



**RECRUITING TEACHERS** — Scores of public school systems were represented at the annual Education Job Fair held recently on campus by the office of Career Education and Placements.

**E-Systems continues the tradition of the world's great problem solvers.**

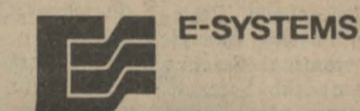
Recognized with Archimedes and Newton as one of the three greatest mathematicians, Karl Gauss also pioneered math in astronomy, gravitation, electricity and magnetism.

E-Systems engineers are continuing in his footsteps today. They are pioneering technology and solving some of the world's toughest problems in electronic transmission and signal-reception in an interference and noise background using basic Gaussian concepts.

E-Systems "pioneering" in communications, data, antenna, intelligence and reconnaissance projects results in systems that are often the first-of-a-kind in the world.

For a reprint of the Gauss illustration and information on career opportunities with E-Systems in Texas, Florida, Indiana, Utah or Virginia, write:

Lloyd K. Lauderdale, V.P. — Research and Engineering, E-Systems, Corporate Headquarters, P.O. Box 226030, Dallas, Texas 75266.



**The problem solvers.**  
An equal opportunity employer M.F. H. V.



Karl Friedrich Gauss 1777-1855

**WARD'S PHARMACY**

"Your Rexall Store"

SENIOR CITIZEN DISCOUNT  
AVAILABLE ON PRESCRIPTIONS

Telephone 826-2445 Nights 826-6920  
Hempstead, Texas

**Schwarz Inc.**

"105 Years of Continuous Service"  
COMPLETE DEPARTMENT STORE  
and  
FURNITURE STORE

It's a pleasure doing business with you.  
Tel. 826-2466 P. O. Box 535  
Hempstead, Texas

**PEOPLES CLEANERS**

DRY CLEANING, ALTERATIONS, LAUNDRY  
SERVICE AND LEATHER CLEANING

826-3847 — Day or Night  
P. O. Box 136  
Hempstead, Texas  
1 - 2 HOUR CLEANING SERVICE

**HEMPSTEAD CLEANERS**

DRY CLEANING

Alterations — Laundry Service

Phone 826-3798 12th and Austin  
Hempstead, Texas

1-DAY DRY CLEANING SERVICE

**PRESCRIPTIONS - DRUGS**

Where You Get More Than Just  
A Welcome and Good Service

**CITY DRUG-HEMPSTEAD**

826-2496 W. W. Wilkes, Owner

24-HOUR SELF SERVICE  
or  
**HEMPSTEAD WASHATERIA**

TOP LOADING SPEED QUEEN  
and  
DOUBLE-LOAD PHILCO BENDIX MACHINES  
Next Door to Pick & Pay Food Market  
Hempstead, Texas

YOUR PATRONAGE APPRECIATED

### Public Notice Designating Directory Information

Prairie View A&M University hereby designates the following categories of student information as public or "Directory Information." Such information may be disclosed by the University for any purpose, at its discretion.

Category I — Name, address, telephone number, dates of attendance, class.

Category II — Previous institutions attended, major field of study, awards, honors, degrees conferred (including dates).

Category III — Past and present participation in officially recognized sports and activities, date and place of

birth, height and weight of athletes, race, sex.

Currently enrolled students may withhold disclosure of any category of information under the Family Educational Rights and Privacy Act of 1974. To withhold disclosure, written notification must be received in the Office of the Registrar within four weeks after the first day of classes for the Fall semester.

Prairie View A&M University assumes that failure on the part of any student to specifically request the withholding of categories of "Directory Information" indicates individual approval for disclosure.

### Opportunities Available in —

### Cooperative Education

The Prairie View A&M University Division of Cooperative Education would like to place you on a co-op assignment for the 1981 Summer session. Companies are looking for co-op students for the Summer and Fall with majors in the following disciplines: Mechanical, Electrical, Aeronautical, Civil Engineers, Mathematical. Public and Business Administration, Economics, Finance and Banking Management, Physical Science, Physics, Biological, Mathematical Science, Computer Science, Management Analyst, Electronics Technicians, Air Traffic Control, Computer Programmer, Bank Examiners, Accounting.

A limited number of job openings are available for Liberal Arts majors. The Cooperative Education Program has work agreements with more than fifty (50) companies. Here are some of the companies co-op students are employed with this Spring: John Deere, Moline, Ill.; NASA-Houston, Tex.; Dryden Flight Research Center, Cal.;

The world's largest wholesale merchandise mart complex on single site is the Dallas Market Center. More than \$4 billion in wholesale business is transacted here each year in the six-building complex.

Federal Aviation Administration, Ft. Worth, Tex.; National Bureau of Standards, Washington, DC; Dowell, Houston, Tex.; J. I. Case, Racine, Wis. The above mentioned companies are not all inclusive but are representative.

The Division of Cooperative Education is accepting application for Summer and Fall job assignments. We have positions for students in all disciplines. Come to the Career Education and Placement Center, room 308 or check with your college co-op coordinator about job openings. For further information, contact: The Director, Division of Cooperative Education, Prairie View A&M University, Prairie View, Texas 77445, (713) 857-4092 or 857-4058.

Prairie View Co-op students earn salaries ranging from \$10,092 to \$19,200 annually. The rate of pay in many cases is dependent upon the number of college credit hours, job disciplines, location and whether the job is with private sector or federal agencies. For good paying Summer co-op positions, see your Cooperative Education Director now. Do not wait it is later than you think!

"HAPPY EASTER" from the Division of Cooperative Education.

### Sigmas Introduce Project "Ed"

(Educational Development)

Education is one of the three programs of Phi Beta Sigma Fraternity, Inc. In efforts to making this an effective program, it is with great pleasure that Delta Theta Chapter of Phi Beta Sigma introduces to Prairie View, Project ED.

Project ED stands for Educational Development. The purpose of this project is to instill in high school youths, particularly seniors, the importance of a formal college education.

Indeed, Project ED proves to be a success. On March 17, ED distributed approximately 80 Prairie View A&M admissions packets to interested students of Kashmere and Forest Brook High Schools. In addition to that 80, ED brought back to PV, 24 cards of students wanting to know more about Prairie View. Moreover, 26 names of students interested in participating in E.C.I. (Engineering Concepts Institute) were forwarded to the assistant to the Dean of Engineering. Hence, Project ED is proud to have inspired 130 senior high school students into becoming prospective Prairie Viewites.

Victor Taylor



**SOCIAL WORK PROGRAM** — Back row, left to right: Bobby Haliburton, Faculty; Andrew Malveaux, Faculty; Elizabeth A. Martin, Faculty; Mr. Willie Hucks, Field Instructor of Dallas Martin Luther King Community Center, Doraine Slaughter, Faculty;

Front row, left to right: Gloria Haywood, Field Instructor of UT Medical Branch, Galveston; Mr. Ruben Burns, Field Instructor of Chelsea Hall, Houston; Ms. Millie Charles, Site Team Member, Southern University, New Orleans; Dr. Sarah B. Williams, Head of Department of Social Work and Sociology.

### Accreditation Site Visit

The Department of Social Work and Sociology had an accreditation site visit recently from the Council on Social Work Education. The site team members representing the Council were Ms. Millie Charles of Southern University in New Orleans, Louisiana and Dr. Victoria Warner of Florida A&M University in Tallahassee, Florida. The site team visitors were here to review the Social Work Program from March 22, 1981 through March 24, 1981.

The decision to accredit Prairie View's Social Work Program will be finalized at the May meeting of the Commission on Accreditation of the Council on Social Work Education. The Department

should receive the final report from the Commission by July, 1981.

Dr. Sarah B. Williams, Head of the Department of Social Work and Sociology along with her faculty and staff extend their gratitude to everyone who shared in the effort to make this a positive experience. The support of the President, his administration, faculty, staff, and students of the University was invaluable during the site team visit to the campus.

### Alpha Tau Alpha Agriculture Fraternity Selects Officers

The ALPHA TAU ALPHA Honorary Agriculture Education Fraternity have selected their new officers. The President is Paul Davis, Vice President is Zonnie Johnson, Secretary-David Henderson, Treasurer-Steve Smith, Reporter-Larry Woodson, Sergeant At Arms Danny Henderson, Parliamentarian-Donavan Turnquest. The ATA will host the annual Agricultural Banquet on April 30.

### Study Skills Workshop Makes A's on Exams — Not F's

Place: Hobart Taylor Hall, Rm #1A110 (Multi-Media Room)

Date: Thursday, April 23  
Time: 3:00 p.m.

Sponsored by Junior Class and the Eta Gamma Chapter of Alpha Phi Alpha Fraternity, Inc.

"Hopefully the image will reflect on the student body in participation on making the dream come true!"

Marita Roberts



— OPEN —  
11:00 a.m. to 9:00 p.m.  
Try Our New  
**PIZZA**  
**CATERING**  
Call 372-2031

### Tinsley's

Chicken and Rolls



TINSLEY'S  
HWY 290 BOSS BIRD  
Hempstead, Texas

### Pyramids of Delta Sigma Theta Sorority, Inc.

Having been selected into the Pyramid Club, the proud young ladies are as follows:

Pyramid President: Debra Levels, is a junior from Marlin, Texas majoring in Mechanical Engineering. She is an honor student and a member of Alpha Kappa Mu, Pi Tau Sigma, Beta Kappa Chi, Pi Mu Epsilon, and Tau Beta Pi honor societies. Debra is also an active member of the Marching Band and Junior Fellow Association.

Pyramid Vice-President: Carol Bigham, is a junior from Houston, Texas majoring in Electrical Engineering. She is an honor student and a member of I.E.E.E. and S.W.E., and the Junior Fellow Association.

Pyramid Secretary: Shirley Sweet, a sophomore from Port Arthur, Texas is majoring in Electrical Engineering. Shirley is an honor student and a member of I.E.E.E. and S.W.E. and the Junior Fellow Association.

Pyramid Reporter: Carol Wayne, is a sophomore from Dallas, Texas. She is an honor student majoring in Political Science. With memberships in the Political Science Club, Blackstone Pre-Law Society and the Marching Band, and "Miss Blackstone Pre-Law Society 1980-81"

Pyramid Business Manager: Marcia Babin, is a sophomore from Houston, Texas majoring in Architecture; she is an honor student and a member of Alpha Kappa Mu Honor Society.

Pyramid Public Service Chairperson: Elora Lee, is a sophomore from Pine Bluff, Arkansas, majoring in computer Science. Elora is also an honor student and a member of Beta Kappa Chi and the women's Basketball Team.

Pyramid Songmaster: Karen Moore, is a sophomore from Houston, Texas majoring in Electrical Engineering. An honor student and a member of Beta Kappa Chi and Pi Mu Epsilon honor societies, Karen is also a member of I.E.E.E. and S.W.E.

Pyramid Stepmaster: Tina Holden is a sophomore from Houston, Texas majoring in Applied Mathematics specializing in Computer Science. Tina is also an honor student and a member of Beta Kappa Chi, Pi Mu Epsilon, Alpha Mu Gamma and the Mathematics Club.

The other members include: Pyramid Stepmaster: Alice

Clemons, is a junior from Chicago, Illinois, majoring in Marketing. She is also an honor student and a member of the American Marketing Association, the Symphonic Band, and the Baptist Student Movement Choir. Alice was also elected "Outstanding Marketing Student!"

Pyramid: Juliette Jeffery, is a junior from Houston, Texas majoring in Accounting. Juliette, an honor student and member of the Accounting Club, received recognition for high academic average in accounting. She is also a member of the Baptist Student Movement.

Pyramid: Sonceahrae McDonald, is a junior from Silsbee, Texas majoring in Home Economics, she is also an honor student.

Pyramid: Meredith McNeely, is a junior from Houston, Texas majoring in Mechanical Engineering. Meredith is an honor student and a member of Beta Kappa Chi, Pi Mu Epsilon and Phi Eta Sigma.

Pyramid: Lynn Roberts, is a sophomore and an honor student from Houston, Texas, majoring in Biology/Pre-Med.

Pyramid: Iva Wheeler, is a senior from Dallas, Texas majoring in Electrical Engineering. Iva is an honor student who has recently been inducted into Beta Kappa Chi. She holds membership in Tau Beta Pi, Eta Kappa Nu, Pi Mu Epsilon, Alpha Kappa Mu, Phi Eta Sigma, I.E.E.E., and S.W.E. Iva was elected "Engineer of the Year" with an overall average of 3.90. She is also listed in WHO'S WHO AMONG AMERICAN COLLEGES and UNIVERSITIES. Presently she is a member of the Junior Fellow Association.

Commentations are extended to Pyramids Marcia Babin, Tina Holden and Karen Moore for receiving trophies for making the honor roll three semesters and Pyramids Debra Levels and Iva Wheeler for receiving trophies for maintaining honor status five semesters, and to all the Pyramids who made the honor roll the first semester 1980-Scholarship is our goal!

Yes, these are the Pyramids of Eta Beta Chapter, Delta Sigma Theta Sorority Inc. We also send congratulations to our Big Sisters who made the Fall Honor Roll and who had the highest average among Greek Letter Organizations, the first semester 1980-81. A special congratulations to our Big Sister Jerelyn Hughes for having the highest average among female Greeks and receiving "Woman of the Year Award!"

We, the Pyramids, hope one day to reach the ultimate goal of Sorors of Delta Sigma Theta Sorority Inc.

Carol Wayne, Reporter



NAVAL ROTC REVIEW — Rear Admiral Benjamin T. Hacker, shown at left.

### Thought for Today Student Art Works on Exhibit Thru May 8

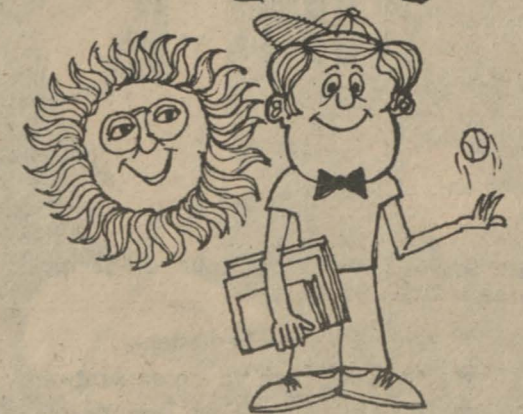
If you love something set it free  
If it comes back to you it is yours  
If it doesn't  
It never was.

In celebration of the Humanities during the month of April, the Prairie View Art Association will sponsor a Student Art Exhibition entitled "A Montage of the Arts." It will consist of advertisings, watercolors, ceramics and designs.

A special exhibit of childrens art by Mrs. Carolyn Tolley's 3rd Grade Class will also be featured.

The exhibit will be on display in the W. R. Banks Library, Second Floor Gallery, Prairie View A&M University, April 13 through May 8, 1981. Everyone is cordially invited.

# Sophomores... how about Summer School with pay



### Sophomores - How About Summer School With Pay

Attend the Navy Science Institute this summer in Newport, Rhode Island and get paid for earning (9) credit hours, plus have all of your expenses paid. If qualified, you will receive a two year scholarship which provides full tuition and books, plus a \$100 a month stipend for your remaining two years. For more information and an application contact Lt. Gray at 2310/2311.

# NAVAL ROTC AT PV



Mexico City is the second-largest city in the world.

### THE PRAIRIE VIEW PANTHER

Published Bi-Weekly in the Interest of a Greater Prairie View A. and M. University. The PANTHER serves as the voice of Pantherland.

Prairie View A&M University is open to all, regardless of race, color, religion, or national origin.

REPORTERS: Hedy Rateliff, Leonard Woodard, Edith Scott, Jean Pierce, Carl Alexander, Diane Smith, Brett Horn

SPORTS: Michael Hearn, David Wells (Henry Hawkins)

CLERICAL: Vanessa Jackson

ADVERTISING: (Gloria Perez)

PHOTOGRAPHY: Brett Horn, David Jones (Roy Pace, Paris Kincaide, Tom Godwin)

Any news items, advertising, or matters of interest to THE PANTHER may be presented to the Department of Student Publications, Room 108-112, New Classroom Building Telephone 857-2117. C. A. Wood, Publications Director.

CASS Student Advertising, Incorporated  
1633 West Central, Evanston, Illinois 60201

# Junior of The Month



Diane Arceneaux

Ms. Diane Arceneaux, has been selected the Junior of the Month, by the Junior Class Public Relations Committee. She is a native of Liberty, Texas, where she graduated from Liberty Sr. High School in 1978. In addition, she is the distinguished daughter of Mr. and Mrs. Irvin Arceneaux.

Ms. Arceneaux is recognized as being an outstanding student, as well as a proficient leader in her class and on campus. Her unique ability to excel in all her academic and social endeavors can be exemplified by her high school accomplishments. While in high school, she was a member of the National Honor Society, Drill Team, Speech Club, Student Council, Who's Who, Yearbook Staff, and she was the Homecoming Queen.

Presently, Ms. Arceneaux is an accounting major and a Computer Science minor at Prairie View. She still maintains her adeptness as an excellent student. She is a member of Alpha Kappa Mu Honor Society, Phi Eta Sigma Honor Society, Presidents Honor Roll, National Dean's List, Zeta Phi Beta Sorority Inc., Accounting Club and the Newman Club. Her hobbies include sewing, cooking, reading, and associating with people.

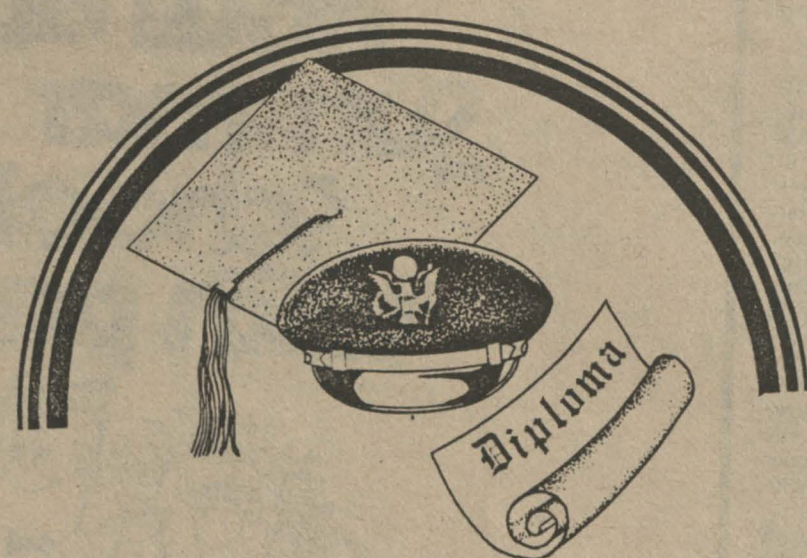
Also, Ms. Arceneaux's primary ambition is to be employed as an corporate accountant upon graduation in 1982, and thereafter pursue an advanced Master's or Doctorate degree in Accounting and become a C.P.A. And, most of all, Ms. Arceneaux states her success philosophy revolve her Christian belief in depending on God's guidance and her extra determination.

We, the Junior Class, officers, members and others congratulate you, Diane. We wish you unlimited success and happiness.

Jr. Editor-Reported  
H.A. Ratcliff

**Annual Career Carnival**  
April 25 - 9:00 a.m. to 4:00 p.m.  
Fieldhouse

# ATTENTION



## ARMY ROTC SUMMER COURSES

Dear Sophomores and Freshmen:  
(Females)

We are still accepting applications for our off-campus summer course which features:

- ★ FREE Air Travel
- ★ Room and Board PAID
- ★ Travel Expenses PAID
- ★ Only 38 Day Semester
- ★ No Obligation to Enter Army
- ★ Full Credit for First Two Years of Basic ROTC (8 Semester Hours)
- ★ PLUS each student is PAID about \$450.00 ★

We offer six sessions; however, due to the high demand by PVU students, only a very limited number of additional students can attend the first and second sessions. Other sessions can accept up to seventeen more applicants each.

- The dates for each session are:
- Session 1 - 17 May-25 June 81
  - Session 2 - 25 May-2 July 81
  - Session 3 - 31 May 9-July 81
  - Session 4 - 28 June 6-August 81
  - Session 5 - 5 July-13 August 81
  - Session 6 - 12 July-20 August 81

Classes will be held at Fort Knox, Kentucky, 35 miles south of Louisville. Students attending will be paid 10c per mile if they wish to drive. (It's about 2,000 miles round trip). For anyone desiring to fly, a round trip airline ticket will be paid from Houston Intercontinental Airport or Home of Record.

Again, I wish to emphasize that you will not incur any form of obligation to this department or the university for attendance at the course irrespective of the money you are paid or the travel costs involved. In addition, attending this course will not preclude you attending summer school at Prairie View A&M University if that is your desire.

To apply or obtain more information, contact me at (713) 857-4512/3471 or visit my office in the OLD SCIENCE BUILDING room 309. When you call, ask about the Military Science Basic Camp.

A. V. EASTER, CPT., F1, Army ROTC

### ATTENTION

## Biology Students Elect District Officers



Joe Louis, the legendary "Brown Bomber" who held the heavyweight title longer than any man in history, died of a heart attack Sunday morning after attending the Larry Holmes-Trevor Berbick title fight at Caesar's Palace Saturday night. He was 66.

Dorothy Ringer, Biology student, was elected Secretary of the Western District, South Central Region of the Beta Beta Beta Biological Honor Society. The Tri-Beta organization held their District Convention at the University of Oklahoma Biological Station, Lake Texoma, Oklahoma, on April 10-12. At the convention the various district officers were elected. Miss Ringer was elected Secretary, Willie Melvin, III, of Texas Southern University was elected President, and Susan Cowart, of the University of Texas at Austin was elected the Parliamentarian.

The Beta Beta Beta Biological Honor Society is an undergraduate organization with over 300 chapters, nationwide, devoted to biological research and the dissemination of this information. Each year all of the chapters of the Western District, South Central Region (Texas, Oklahoma and Louisiana) meet to discuss new theories and concepts in Biology. At these meetings research papers are presented and lectures given. The meeting this year was attended by 14 chapters.

The Prairie View A&M University Tri-Beta Chapter had 10 persons to attend. Two of these presented scientific research papers. One paper was given by Kriellion Sanders, entitled "Purification and Properties of a Protease from Bovine Testes." The other was by the chapter President,

Ashton Trier and was entitled "Hindlimb Regeneration in Rana pipiens Following Trauma and Hormonal Treatment." Also attending the Convention were the co-sponsors Drs. J. E. Berry and R. D. Humphrey.

The host chapter of the year's convention was Baylor University and next year it will be hosted by Sam Houston State University. During the convention banquet Dr. James Kroll, Professor, Steven F. Austin State University, gave the keynote address. Dr. Kroll discussed the change in biological research in the 1980's. He said that research would become more goal oriented and less commonly funded by the Federal Government. He also stressed the need for public information about the research; he felt that this should not be in technical jargon.

One important highlight of this year's convention was the visit by the Director of the Beta Beta Beta Organization, Dr. Christopher Johnson, Professor, Pittsburg (Kansas) State University. Dr. Johnson flew in for part of the convention and met with many of the students and campus faculty sponsors.

The Prairie View chapter was presented with the outstanding chapter award. Prairie View was one of the 14 chapters from throughout the nation to win this award. The award was received by the President, Ashton Trier.

The District Convention this

year was one of the best. There were many very excellent research papers and very fine discussions. The address by Dr. Kroll and the visit by Dr. Johnson afforded an opportunity to meet and discuss many important factors of Biology.

Prairie View was fortunate to have an excellent Tri-Beta chapter and to attend and to participate in this fine District meeting. All of the Prairie View Tri-Bets members are looking forward to the meeting next year. It is hoped that many students will be able to present their research results at this meeting.

R. D. Humphrey

## ASCE Paper Contest

The chapter of American Society of Civil Engineering held their sixteenth annual paper contest February 19, 1981. The Paper contest was well attended and was a great success. The contestants and the title of their papers were as follows:

Alfred Dawson on the Flow Visualization by the Use of "Hydrogen Bubble Method"

Frank Edomwonyi on the Safety Design of Rural Highway.

Dennis W. Gilmore on the Investigation and Design of an Interior Square Column Footing.

Joshua Nwokefor on the Blasting Problems of Today.

Reginald Sapenter on the Development of the Determination of Permeability of Soil.

The judges were Ms. Thetia Edmond an English professor, Mr. Phillips a Mechanical Engineering Professor and Mr. Gordon a Placement Center Director.

The contestants were judges on interest and significance of subject, organization of Material, presence of original ideas and research, technical command of subject, author's personal bearing, style of delivery, diction and pronunciation, and choice of words and timing.

Mr. Reginald Sapenter won the first place in the paper contest. Mr. Sapenter are also members of American Society of Honors Club and Tau Beta Pi. Mr. Alfred Dawson won the second place and Mr. Dennis W. Gilmore won the third place in the paper contest.

The winner, Mr. Reginald

### AKA's Extend Best Wishes

The sorors of Alpha Kappa Alpha Sorority Inc. would like to extend our best wishes to the two sorors who are competing in the Miss Prairie View pageant. These sorors are: Miss Marilyn Gail Morris the daughter of Mrs. Emma D. Holden of San Antonio, Texas. She is a junior majoring in Elementary Education with a minor in reading. She graduated from Phillis Wheatly High School (San Antonio), she is 20 years of age. Her accomplishments include: Miss Wesley Foundation, Debutante 1978, Alpha Kappa Alpha Sorority Inc., Delta Rho Chapter of Women's Council, Century II Book Review Committee, Curriculum Committee for College of Education (student representative), Suarez-Collins Woman of the Year 1981. She plans to graduate from Prairie View in May, 1982.

Miss Vanessa Gail Walker the daughter of Rev. and Mrs. Edwin Walker of Prairie View, Texas. She is a sophomore majoring in Nursing, she is 19 years of age. Her accomplishments include: Miss Baptist Student Movement, Miss National Baptist Student Union of America, Alpha Kappa Alpha Sorority Inc., National Soloist National Black Convention, and a member of the Memorial Center Board.

We would also like to wish all other contestants good luck in the pageant. Jenny

## SOCIAL SCIENCE-SOCIOLOGY DEPT. HAS SITE VISIT

Visiting team members are pictured during entry visit with President A. I. Thomas and staff members of the Department of Sociology and Social Work. The visit was related to certification of the programs of study.



**"I'LL TEACH BILLY TO BE A COWPUNCHER AS LONG AS HE DON'T PRACTICE ON MY COWS."**

Jim Shoulders and Billy Martin: Famous Cowboys

**LITE BEER FROM MILLER. EVERYTHING YOU ALWAYS WANTED IN A BEER. AND LESS.**

1981 Beer Brewed by Miller Brewing Co., Milwaukee, Wis.

# COLLEGE POETRY REVIEW

The NATIONAL POETRY PRESS  
announces

The closing date for the submission of manuscripts by College Students is  
**MAY 1st**

ANY STUDENT attending either junior or senior college is eligible to submit his verse. There is no limitation as to form or theme. Shorter works are preferred because of space limitations.

Each poem must be TYPED or PRINTED on a separate sheet, and must bear the NAME and HOME ADDRESS of the student, and the COLLEGE ADDRESS as well.

MANUSCRIPTS should be sent to the OFFICE OF THE PRESS.

NATIONAL POETRY PRESS

Agoura, California 91301

Box 218

## PV ASCE Student Chapter Conducts First Awareness Banquet

On March 28, 1981 the members of the Student Chapter invited their parents and friends for a banquet in Houston, Texas to make them aware of the active role that the student members of ASCE Student Chapter are playing at Prairie View A&M University. It was an enjoyable evening and the parents were very happy to learn about our roles and were grateful for inviting them to an informative banquet.

Mr. Derwin Penn, vice president, student chapter, was the

master of ceremony. Ms. Marilyn Washington, president student chapter, in

### New Club Called "Untouchables"

The Untouchables of Prairie View A&M University are known to be the youngest club on the campus grounds. The club's primary function is to strive academically as well as socially.

The Untouchables was founded on September 25, 1980 by Darryl A. Prudhomme (President), and Kevin S. Dennis. Both men are second semester freshmen.

The club consists of 36 members (male and female). They have just recently promoted a fashion show on campus. The first dance for the

opening remarks explain the occasion. This was followed by Ms. Degalra Gurley, secretary of ASCE, president of CEHC, and outstanding Civil Engineer junior student, was the speaker. She eloquently impressed the audience about responsibilities that they feel in assuring the faculties, and parents by saying it is a time for us to do so. This also was the team first conference.

The meeting was well attended by the student members, faculties, members and parents.

Barbara A. Harris

Untouchables is on April 30, 1981 at the Newman Center.

Members of the Untouchables will gladly work with any organization. You may contact the Untouchables at (713) 857-4768.

## You Can Make It

by Hedy Ratcliff

With a smile so full of life,  
Love is not far.  
There is always a reason to have your pride,  
When you know who you are.  
Be what you want,  
Do what you feel,  
Believe in yourself,  
Have a friend in someone else.

**You Can Make It**, don't give up  
**You Can Make It**, you deserve good luck  
**When you help those**, who help you and more.  
**You Can Make It**, Keep your chin up.

Turn your dreams into reality,  
Go on do it.  
Take your time and try  
Put your mind to it.  
Be what you want,  
Do what you feel,  
Just take care,  
And be willing to share.

**Yes, You Can Make It.\***

### Campus Paperback Bestsellers

- The Official Preppy Handbook**, edited by Lisa Bach. (Workman, \$3.95.) Making the grade: humor.
- Princess Daisy**, by Judith Krantz. (Bantam, \$3.95.) Woman's rise to international glamour set: fiction.
- The Brethren**, by Bob Woodward & Scott Armstrong. (Avon, \$3.50.) Behind-the-scenes at the Supreme Court.
- Free to Choose**, by Milton & Rose Friedman. (Avon, \$2.95.) How government affects the economy.
- Godel, Escher, Bach**, by Douglas R. Hofstadter. (Vintage, \$8.95.) Computer scientist's theory of reality.
- The Devil's Alternative**, by Frederick Forsyth. (Bantam, \$3.50.) Imminent global disaster: fiction.
- The Complete Scarsdale Medical Diet**, by Herman Tarnower, MD and Samm S. Baker. (Bantam, \$2.95.)
- What Color is Your Parachute?**, by Richard N. Bolles. (Ten Speed Press, \$5.95.) Job and career guide.
- The Next Whole Earth Catalogue**, edited by Stewart Brand. (Point/Random House, \$12.50.)
- Still Life with Woodpecker**, by Tom Robbins. (Bantam, \$6.95.) A sort of love story: fiction.

Compiled by The Chronicle of Higher Education from information supplied by college stores throughout the country. April 6, 1981.

### New & Recommended

**Jupiter's Travels**, by Ted Simon. (Penguin, \$4.95.) Around the world on a motorcycle.

**The Judge**, by Rebecca West. (Dial, \$6.95.) English classic of female/male relationships: fiction.

**The Nick Adams Stories**, by Ernest Hemingway. (Scribner's, \$5.95.) The life of a man not unlike the author himself.

Association of American Publishers



## Hanni-Bull

Hanni-Bull took the Bull by the horns and led an army of elephants across the Alps. But once he got there he took his Bull by the keg. Because anyone who's ever tried to lead an army of elephants anywhere knows Hanni-Bull worked up a historic thirst. The kind it took a bunch of Bull to conquer.



**No one does it like the Bull.**

© 1981 Jos. Schlitz Brewing Company, Milwaukee, Wisconsin

# DEATHS

## Hobart Taylor, Jr. Passes

Hobart Taylor, Jr., one of PVA&M's most distinguished graduates and one of the highest-ranking officials in the Kennedy and Johnson administrations, died of a crippling muscle disease, his family announced here Friday.

Taylor, 60, died Wednesday in Lyford Cay, Nassau, Bahamas, of amyotrophic lateral sclerosis, a disease he has suffered from for several years.

Funeral services were held at the Emanuel Episcopal Church in Middleburg, Va.

A native of Texarkana, who grew up in Houston, Taylor served as executive vice chairman of the President's Committee on Equal Employment Opportunity under Presidents, John F. Kennedy and Lyndon B. Johnson.

In 1964-65 he was also associate counsel to Johnson on the White House staff. From then until 1968 he served as a director of the Import-Export Bank, a federal agency that served as a lending agency to private corporations to boost foreign trade.

A prominent figure on Washington's social scene for two decades, Taylor was a graduate of Prairie View A&M University and Howard Uni-



Taylor

versity with a law degree from the University of Michigan.

Before joining the federal government in 1961, he was a successful corporate lawyer in Detroit, the city where he moved after leaving Houston.

During his service on the equal employment committee, which was chaired by Vice President Hubert Humphrey, Taylor was credited with signing up 316 major American corporations to provide equal job opportunities voluntarily for minority groups.

Taylor was a personal friend of Johnson's who was among his closest advisers on civil rights legislation.

## Services Held For Dr. Tyler



Memorial services for Dr. Esther Tyler, professor in the College of Business, were held Friday, April 3 at 1:30 p.m. in the Hobart Taylor Recital Hall.

Dr. Tyler, who earned two degrees at Prairie View and the doctorate at the University of Houston, was injured in an automobile accident enroute to the campus from her home in Sealy, Texas. She died shortly afterwards in Herman Hospital.

Funeral services were held

## Public Service Project Reported

The Pyramids of the Eta Beta Chapter of Delta Sigma Theta Sorority Inc., recently participated in their first Public Service project on March 29th.

The Pyramids visited the Hempstead Nursing Home, where they entertained the residents with spiritual songs, sung by the Pyramid choir. Also a prayer was given by Pyramid Alice Clemons and a poem recited by Pyramid Lynn Roberts.

A small treat was taken to the nursing home as a token of appreciation, for being allowed to entertain the residents. The visit was an enjoyable one and the

Saturday, April 4 at the Bethel Baptist Church in Sealy. Dr. Tyler served as secretary in the PANTHER and University Information Office earlier and was highly regarded by everyone connected with campus publications.



**PRAIRIE VIEW WOMAN** — Ms. Jerelyn Hughes of Houston receives trophy honoring her as "The Prairie View Woman" from President A. I. Thomas. Ms. Hughes earned a perfect average of 4.00 during the First Semester of the current academic year.

occupants at the nursing home were left in high spirits.

Pyramid Carol Wayne, Reporter

Houston was the first city in the United States to have two volumes of yellow pages in its telephone directory.

# LIBRASCOPE IN SOUTHERN CALIFORNIA

Upcoming engineering grads will find important work to do... and a great place to do it in!

Few fields are as vital as national defense. And few companies are so totally involved, and in so wide an array of areas, as Librascope.

Librascope designs and manufactures control and display, data processing and communications equipment for major Army & Navy programs such as:

- antisubmarine weapons control systems
- acoustic countermeasure devices
- modular DP/message handling communications terminals
- large-screen laser generated display systems

Such diversity creates a broad spectrum of professional possibilities in...

- \* systems software design and application
- \* circuit design
- \* microprocessor application
- \* system test, evaluation and design

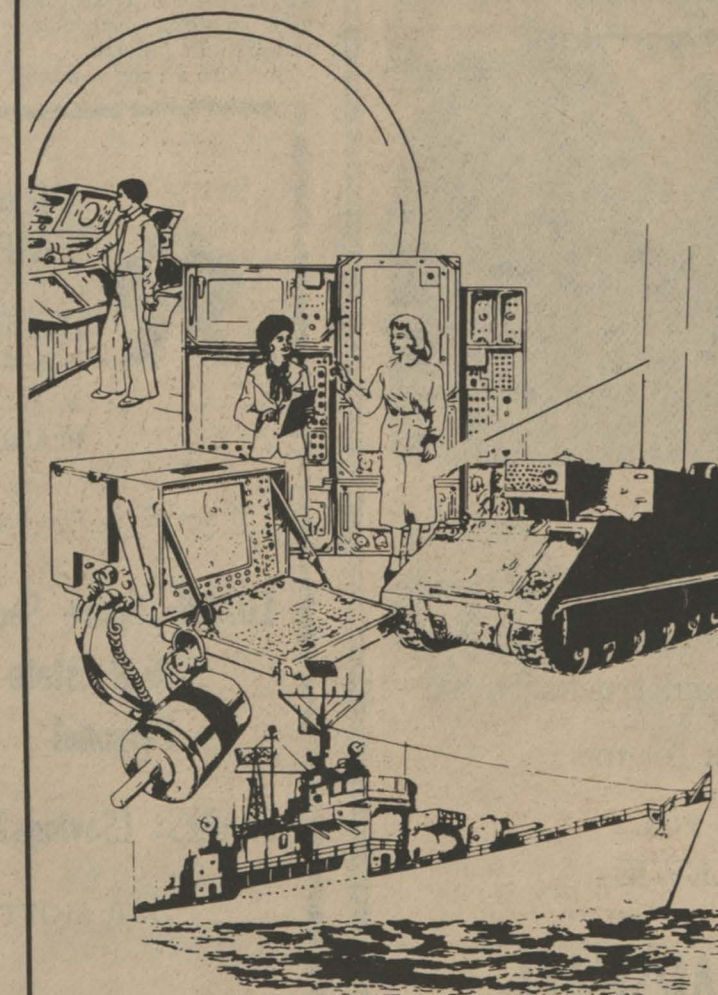
... and allows ample room for advancement and career development as we progress and diversify even further in our challenging industry.

The skills and knowledge you've attained demand a career that's involving and important. And your personal goals demand a relaxing and refreshing atmosphere like Southern California. With Librascope, you can find both, and some excellent rewards in salary and benefits.

Our representatives will be in Houston to interview May 1 & 2 at the Shamrock Hilton. To set up an appointment, call Ron Brewer COLLECT at (213) 244-6541 as soon as possible, or, if you prefer, send your resume to him c/o Professional Employment, Librascope, 833 Sonora Ave., Glendale, CA 91201.

**LIBRASCOPE**  
a division of The SINGER Company

Equal Opportunity Employer M/F/H/V  
U.S. Citizenship Required



## In Memoriam

Esther Johnson Tyler was born in Fayette, Mississippi to Eva and Theodore Johnson, on December 22, 1952, she was married to Finis O. Tyler, and to this union three children were born: Theadra, David, and Yvette.

She received her diploma from Eureka High School, Hattiesburg, Mississippi, in 1947, and a certificate in Secretarial Science from the National School of Business, Nashville, Tennessee, in 1949. She was graduated from Prairie View A&M University, Prairie View, Texas, with a Bachelor of Science Degree in 1961 and a Master of Science Degree in Business Education in 1967. The Ed.D. in curriculum and Instruction was earned in 1977 at the University of Houston, Houston, Texas.

Dr. Tyler taught in the Sealy Independent School District, Sealy, Texas, from 1961 to 1966 and in the Royal Independent School District, Brookshire, Texas, from 1966 to 1968.

Dr. Tyler has served the Prairie View A&M University family for 24 years. Prior to teaching in the public schools, she was employed as a secretary for the Extension Service, the Fiscal Office, the Public Relations Department (Dr. C. A. Wood), the History Department (Dr. George Woolfolk), the Dean of Arts

and Sciences (Dr. T. P. Doolley); and in 1968, she returned to the campus as a faculty member in the College of Business, where she served until her untimely death.

She was a member of the Bethel Baptist Church, Sealy, Texas where she served faithfully, and is a member of numerous professional and social organizations: The Texas Business Education Association, Texas Association of College Teachers, Texas Business Teacher Education Council, Mountain Plains Region of the National Business Education Association, International Society of Business Education, American Association of University Professors, Delta Pi Epsilon Honor Society, Pi Omega Pi Honor Society, Phi Delta Kappa, Zeta Phi Beta Sorority, and Iota Phi Lambda Sorority.

Dr. Esther Johnson Tyler is survived by her husband, Finis O. Tyler; three children: Theadra Tyler Curry (Houston, Texas), David Ronald Tyler (Angleton, Texas); and Yvette Tyler (Sealy, Texas); three grandchildren; her parents, Mrs. Eva Johnson and Mr. Theodore Johnson, one brother, Mr. Robert Johnson (Gulfport, Mississippi), and a host of other relatives and friends.

The Missouri-Kansas-Texas railroad operates 1,018 miles of railroad track in Texas.

**PARENT'S DAY**  
April 26

# Kollar Korner

## The World Can Work

Continued from April 2-7, Page 6

Darnell L. Walker, Director: Wesley Foundation and Pastor of First United Methodist Church



Optimism must include to be for sure attitudes and desires, but must extend further as indicated in the article of which this treatise is reflective and finds its background, "If we will work diligently at it in the spirit of Christ," and I add 'are empowered by the Holy Spirit!' During Lent and Eastertide, we are very conscious of the sacrificial atonement and victory of overcoming the most subversive power known in human history, death.

Therefore, in an attempt to strengthen our faith, let us begin with Bishop Nichols' sub topic: "Christian Characteristics." As we explore the Christian phenomena, suffice to list its two basic sources: Jesus Christ, Himself and all that is a part of His experience, and the Bible, "the basic textbook." The Bible describes God as one who takes the initiative, and seeks that which is His own creation. Although God created the entire universe and all that is in it, endowed humanity with a superior intellect, and charged that human creation with supervisory responsibilities of the planet earth, and gave that creation the freedom to make choices; He still is a seeking God. It is the last of the gifts of God which drew limits upon Him; and thus, causes Him to seek, and in His seeking takes the initial step.

The Biblical account shows a twofold appraisal of the human situation: (1) Human beings have tendencies to abuse their privileges of freedom in making choices; (2) 'God is persistent in His effort to reconcile, restore, redeem, reconcile, or in simple term 'save' His own human creation. 'Human deviation from God's will,' or 'missing the mark' according to the bible is called "sin." This calls upon the need of repentance in order that we can be brought back, reclaimed as the image from creation as in Adam. Now when we are willing to

admit our sin, our need of reconciliation; we may wish to question what is God's will for me or how is the will of God perceived? Bishop Nichols refers to "John Wesley, the father of Methodism," in which Mr. Wesley provides a fourfold approach to the authenticity of the revelation of God. The first starts with Scripture and to be

**LOCAL ADVISOR HONORED AT BSU NATIONAL MEET** — Rev. E. J. Johnson, sponsor of Baptist Student Movement received the Directors Award in Atlanta, Georgia during the National Retreat March, 1981. Rev. Johnson has been the sponsor of Baptist Student Movement for 24 consecutive years.

So, with all the available

resources, we should be able to find our way back to the "city of God," His Kingdom. After acknowledgement, we move to repentance, and acceptance of the redeeming love known through Jesus Christ, the propitiation for our sins. We are a chosen people of God "not by divine pre-selection," but given the freedom to choose to be the chosen by our responding to God's initiative, which we see in the traditional celebrated self-sacrificial act of Jesus on the cross, and His rising from the tomb. As Nichols continues: "It is in this act of redeeming love that

See KOLLAR KORNER, P. 6

## PV-ite is National BSU Queen for '81-82

Miss Vanessa Walker, a native Houstonian who now resides in Prairie View, has been selected as the National BSU queen for the 1981-82 academic year.

Miss Walker competed against 40 worthy contestants from various colleges across the Nation. The National Baptist Student Union Retreat this year is in Atlanta, Georgia. This is an event in which Prairie View's Baptist Student Union Choir has taken part in all 36 years of existence and each year we send a queen to represent Prairie View's student body.

Vanessa took the hearts of the thousands of students from all over the nation when she sang her own version of 'Standing on the Promise Land' which was arranged by herself and Ms Loretta Johnson who is the pianist of Prairie View BSU Choir. Vanessa was escorted by Charlie Shaw who is the reigning Mr Baptist Student Union here at Prairie View.

Vanessa is a Nursing major and also has a strong interest in singing Professionally. Any one who knows 'Van', as she is called by her closer peers, knows that she is a very friendly and kind person, she is also a very fun person to be with. She is what most people to be a very live and out going individual. Vanessa is a God fearing Christian thanks to her beautiful parents, Rev. and Mrs. Edwin P. Walker an outstanding preacher of the gospel. She also has a sister who attends Waller High School. Vanessa is also a member of the Alpha Kappa Alpha Sorority Inc.



Vanessa Walker

We the members of the Baptist Student Movement Choir and the Prairie View student body would like to thank Miss Vanessa for representing us and wish you peace and happiness and lots of luck in the upcoming year as the National Miss Baptist Student Union.

Arthur Foy

## PV Nursing Professor Speaks In Galveston

Ms. Billie Bell, an associate professor at Prairie View A&M University College of Nursing, was guest speaker at a recent Gulf Coast Area Black Nurses Association meeting in Galveston.

Ms. Bell received her bachelor's degree in nursing from Prairie View A&M in 1957. She earned a master's degree in nursing at Texas Women's University College of Nursing at Denton in 1971.

Ms. Bell's professional experience began in 1957 when she served as an instructor of the fundamentals of nursing at Prairie View A&M. Currently, she is the senior-level coordinator. She also teaches medical-surgical nursing.

Ms. Bell is a member of the American Nurses Association and the National League of Nursing.

She has served as a program speaker for District 9 of the Texas Nurses Association in 1978, and Texas Nursing Students Association Convention in 1980. During the year 1979-80, she was chairperson of the Gulf Coast Advisory Committee for continuing education.



Ms. Billie Bell

Other professional activities include membership on the Texas Nurse Association Blue Ribbon Advisory Committee on Nurse Manpower Shortage and the Texas State Board of Nurse Examiners, of which she served as president during 1978-79. Four Prairie View University committees share her expertise, and she belongs to several civic organizations including the



PRAIRIE VIEW MAN — Mark Fawles of Houston, receives trophy from Dr. A. I. Thomas honoring him upon achieving the title of "The Prairie View Man."

## PV Relay Team Wins Trophies at U. of Texas

by Leonard Woodard

Prairie View's 400-meter relay team walked off with a first place medal for the third straight time at last week's Texas Relays.

The team of sophomore Donald Collins, Keith Lundy, Stacy Robinson and Lee Gray, finished first in a time of 41.84.

Win streaks were halted in other races with the Panthers finishing second in the sprint medley relay with Gray, Robinson, Charles Pettis and Eric Pierce second in 3:22.30, just a lunge short of first place. That second place medal snapped a string of three straight first place finishes.

Lundy, Collins, Pettis and Thaddeus Gamble also finished second in the 1600 meter relay in a time of 3:17.07 also seeing a string of three straight victories go down the drain.

The Pantherettes had some streaks broken also after eight straight victories in the 1600 meter, nine straight in the sprint medley. The Pantherettes finished first in the first heat of the sprint medley with a time of 1:42.44 and turning in the fastest qualifying time in the 1600 meter relay of 3:37.49.

But in the finals the Pantherette 1600 meter relay team of Maryann Higgs, Easter Gabriel, Loretta Edwards and Sheila LaBome finished third in 3:40.40.

The sprint medley relay team of LaBome, Cassandra Graham, Gabriel and Higgs finished fourth in 1:42.51 and that same foursome finished fourth in the 400 meter relay in a time of 46.00.

In individual events, sophomore shot putter Karen

## Kollar Korner

CONTINUED from Page 6 makes possible our deliverance from both the power and the penalty of sin.' Therefore, we participate in the sacraments of Baptism and Holy Communion as entrance and memorial experiences of the faith which grew out of the Christ experience, yes, 'the world can work; for us, if we will . . . (Please follow the development in subsequent issues of the Panther).

Darnell L. Walker, Director: Wesley Foundation, and Pastor; First United Methodist Church

YWCA and the League of Women Voters.

Her honors include being listed in the World Who's Who of Women.

## BRANNAN'S SUPERMARKET

MEATS OF QUALITY 372-3639 220 Cherry Waller

## PV Baseball Team in NAIA District 8 Rating

by Leonard Woodard

Prairie View's baseball team continues to hold the No. 6 spot in the weekly NAIA District 8 baseball poll. The Panthers had 19 points based on their 13-15 record through games of April 4. The top six teams in the poll will advance to the NAIA District 8 tournament May 13-15 in Wichita Falls, Texas.

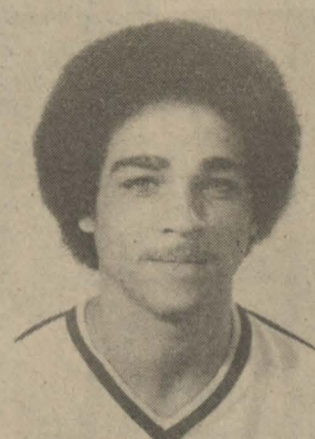
Midwestern State, with a 23-6 record was in front with 46 points.

Al Gomez, senior second baseman, ranks second among the top 25 hitters in the poll with a .382 average. He has 21 runs batted in and had six home runs in the latest district individual statistics.

Adolph Crump, a senior catcher, was 14th with a .350 average and three home runs.

Prairie View's top pitchers are freshman Fred Brown and senior Charles Hudson. Brown is ranked sixth with a 2.45 earned run average, a 2-2 record Hudson is 10th with a 3.00 earned run average and a 4-4 record.

cepting membership for Fall of '81. Contact Clarence Jones, 857-5229. By Vanessa Shippard



**TOP PANTHER HITTER** — Alfonso Gomez broke the career home run record last Sunday when he hit a three-run home run against Jarvis Christian College. That upped his total to seven for the season and 19 in his career. Gomez has hit three home runs in the last five Panther contests. He also hit the cycle against Jarvis Christian with a single, double, triple and home run in the seven at bats in the doubleheader. He also had seven runs batted in.



## VOTE FOR YOUR ATHLETE OF THE YEAR



- 1. AL GOMEZ 2. GARY OUTLAW 3. ALVIS PRINCE 4. AL REYNOLDS 5. KEVIN SULLIVAN 6. ROBERT THOMAS 7. KAREN WADDELL 8. JOHN WHITE

Clip on dotted line and vote for your choice below. MILLER'S ATHLETE OF THE YEAR

I Vote For (PLACE BALLOT IN BOX AT PUBLICATIONS OFFICE)

PLAYER OF THE MONTH Sponsored by The Miller Brewing Company KRISTEN DISTRIBUTING CO., Bellville



Dear Friends: As a special sales representative for Lawrence Marshall Chevy-Olds I can offer you and your friends great deals on new or used cars and trucks. Please call or come by and ask for me. Thank you, TIM LEWIS

CHEVROLET HEMPSTEAD 826-2411 LAWRENCE MARSHALL CHEVROLET-OLDS, INC. P. O. Box 983 — Hempstead HOUSTON 463-8484 OLDSMOBILE

PRAIRIE VIEW A&M UNIVERSITY EMPLOYEES FEDERAL credit union

P. O. BOX 2606 PRAIRIE VIEW, TEXAS 77445 A Service to The Prairie View Community for Over Forty Two Years

- LOANS: Share Secured 10% Annual Percentage Rate Real Estate 12% Annual Percentage Rate Personal 15% Annual Percentage Rate SHARES: (Savings) 7% Annual Percentage Rate

OUR MOTTO: "Not for Profit Not for Charity But for Service" OFFICE HOURS: Monday thru Friday 9:00 - 6:00 p.m. PHONE: (713/ 857-4925) OFFICE LOCATION: P. V. Alumni House

CITIZENS STATE BANK MEMBER F. D. I. C. P. O. Box 575 Phone 826-2431 HEMPSTEAD, TEXAS

GUARANTY BOND STATE BANK MEMBER F. D. I. C. Waller, Texas



## Awards for Academic Honors



## THE PANTHER PRAIRIE VIEW A&M

Photo by [unreadable]  
Page [unreadable]

## Debbie Allen Houston's Own National Star to Appear at PV

The talented and attractive Debbie Allen will be featured in a special appearance here on April 30. She will appear at a morning convocation and during an evening with Debbie at 7:30 p.m. in Hobart Taylor Hall.



## Miss PV Pageant

Jo Ann Vallie Rush (left) will serve as MC for the Annual Miss PV Pageant April 21. The reigning Miss PV, Natalie McKinney, will take her final walk and toast the winners.



## Prairie View A&M Top Scholars

Samuel Tate and Jerelyn Hughes hold trophies for posting the highest academic averages among Greek Letter organizations. Eta Beta Chapter of Delta Sigma Theta Sorority was the Greek Letter organization with the highest average for the First Semester — 1980-81.

