

Prairie View A&M University

Digital Commons @PVAMU

---

PV Panther Newspapers

Publications

---

3-6-1975

## Panther - March 1975 - Vol. XLIX No. 13

Prairie View A&M University

Follow this and additional works at: <https://digitalcommons.pvamu.edu/pv-panther-newspapers>

---

### Recommended Citation

Prairie View A&M University. (1975). Panther - March 1975 - Vol. XLIX No. 13., *Vol. XLIX No. 13* Retrieved from <https://digitalcommons.pvamu.edu/pv-panther-newspapers/870>

This Book is brought to you for free and open access by the Publications at Digital Commons @PVAMU. It has been accepted for inclusion in PV Panther Newspapers by an authorized administrator of Digital Commons @PVAMU. For more information, please contact [hvkoshy@pvamu.edu](mailto:hvkoshy@pvamu.edu).





**EMPLOYMENT CENTER ESTABLISHED IN WALLER** — The Tri-City area was represented in the photo above showing Waller Mayor Danny Marburger (left), Dr. A. I. Thomas, Judge Jack Taylor, Prairie View Councilman Dr. Jack Echols and County

Engineer Jack Rafferty as they join in opening ceremonies for the Waller County Employment Information Center. Employment counselor Mrs. Linda Stevens is interviewing job applicant Daniel Williams.

## A&M System Board Adds New Members, Elects Officers

COLLEGE STATION — Clyde Wells of Granbury and Dallas has been re-elected president of the Texas A&M University System Board of Directors.

Richard A. Goodson, also of Dallas, was elected vice president.

Wells has served three two-year terms as president of the governing board for the statewide educational, research and public service system. Goodson succeeds S. B. Whittenburg of Amarillo.

The board elects new officers every two years following the

appointment of new members by the governor. The terms expire every other year.

The meeting last week was the first for Alfred I. Davis of Dallas and Ross C. Watkins of Uvalde. Gov. Dolph Briscoe appointed them last month and reappointed Joe H. Reynolds of Houston.

Prairie View A&M is a part of the Texas A&M University System and has been governed by the A&M Board and president since its establishment by the Texas Legislature in 1876.

## Major Events Coming Up

Honors Week  
March 17-21

Honors Convocation  
March 20

AROTC High School  
Field Day  
April 4-5

Miss Prairie View  
Pageant  
April 24

Parents Day  
April 27

Commencement  
May 4

## Science Training Program Set For Summer Session

The Student Science Training Program (SSTP) supported by the National Science Foundation (NSF) will be held at Prairie View A&M on June 1 - July 12, 1975. This six-week program is one of the 105 SSTP projects to be conducted in 43 states covering a wide spectrum of the mathematics, technology, and the biological, physical, and social sciences. Approximately 3,400 top high school students from throughout the United States will participate in scientific research and study this summer and during the academic year under grants awarded by NSF.

The project at Prairie View will offer study and laboratory opportunities in chemistry not usually encountered in high school nor in the first year college course. It will be designed to provide guidance and encouragement to talented young people with strong potentials for scientific and technical careers. The 30 high school student-juniors to be selected, without regards to race, creed, or color, will reside on the campus and enjoy the full impact of the university living. Student selection will be based on scholastic ability, scientific motivation, and the completion of specific high school courses in science and mathematics.

The cost of instruction will be covered by the NSF grant. Participants in the project are expected to pay their own expenses for room, board, and travel. Limited funds are available to support qualified students who would otherwise

See SCIENCE, Page 4



**ENGINEERING SPOTLIGHTED** — President A. I. Thomas and Engineering Dean A. E. Greaux talked about engineering week activities on KHTV-39's "Black View Point" hosted by Claresse Studevant (right). Bottom photo picture Dean Greaux being questioned about engineering programs at the university by Tom Dickerson for Newsmaker on Channel 13.

## Yearbook Features To Be Selected By Student Body

The yearbook staff is now sponsoring its annual survey to select the following special features for 1974-75:  
Most Beautiful Women  
Most Handsome Men  
Most Friendly (Men and Women)

No 1 Campus Flirts and Players

All persons nominated for the above features will be listed on ballots and voted on by the Student Body. Watch the *Panther* for names, photos and dates for voting. All candidates will be asked to take or furnish a photo for the *Panther* and publicity. All winners will be photographed by groups in

color, and individually in black and white for Yearbook presentations.

The deadline for nominations was Tuesday, March 4

Other features planned for the 1975 Yearbook include Who's Who, Campus Queen and Sweethearts, Honor Students, and Panther Athlete: making the greatest contribution to the University.

All sections of the yearbook staff are at work planning layouts and receiving copy and photos. Photographs are being scheduled daily for staff groups, and all student organizations.

## A Cappella Choir Ready For Annual Spring Tour

The Prairie View A Cappella Concert Choir will be presented in concert March 25, Paris, Texas; March 27, Little Rock, Arkansas; March 28 & 29, Memphis Tenn.; April 1, Chicago, Ill.; April 4, Detroit, Mich.; April 6, Washington, D.C.; April 8, Kansas City, Kansas; April 10, Tulsa, Oklahoma; April 11, Dallas, Texas; April 12, Prairie View, Texas.

Some fifty-one young singers of Prairie View A&M University, comprising what the press has classified generally as one of the best touring organizations will concertize for the sixteenth season in a program entitled "Telephonic Telestar of Songs Internationale." The choir has also recorded the "Telestar of Song" album in the Gold Star Studios of Houston, Texas, a Simpson Production from Globe Corp., New York, N.Y.

During the past fifteen years they have made extensive tours appearing in the major leading cities of the United States including, Detroit, San Fran-

cisco, Washington D.C., New York, Chicago, Canada and Old Mexico. Their travels have covered more than 90,980 miles, more than 517 appearances have been made in the history of the organization.

The nationally known Prairie View A Cappella Concert Choir was organized in 1958 by their present director, Dr. H. Edisor Anderson. Their repertoire covers a wide range of music which includes music from the masterpieces, classics, modern romantics as well as folk songs. The choir also has appeared in sacred and secular concerts radio and television.

The choir consists of fifty-one members, presently competing for 35 positions:

**First Sopranos** — Sylvia Mathis, section leader, Patricia Lewis, Vernell Glover, Barbara Shepherd, Carrie Moore, and Evelyn Preston. **Second Sopranos** — Vivian Henry section leader, Valerie Brooks Annice Lawson, Deloz Lenord Beverly Lovelace, Linda McMillian, Karen Moore, Dementia See A CAPPELLA, Page 5



1974-75 A CAPPELLA CONCERT CHOIR - PRAIRIE VIEW A&M UNIVERSITY





### National Engineer's Week Observed At Prairie View

National Engineering Week was observed on February 16-22 at Prairie View A&M University and throughout the nation.

Engineers Week is sponsored by the 68,000-member National Society of Professional Engineers, of which the College of Engineering is an affiliate. The theme for 1975 was "Engineering — Exploring New Energy Frontiers."

Engineers Week "brings to the attention of the public the role of the professional engineer in today's society, and his vital concern for improving our quality of life and building a better America for everyone."

Activities held during the week included Workshops in Engineering and Mathematics; Special programs sponsored by various engineering societies - Tau Beta Pi, Eta Kappa Nu Honor Society and Institute of

The P. V. Agronomy Club has started the new year with two goals in mind. First, to develop a stronger tie between our club and the surrounding community. We hope to achieve this by promoting community activities such as public speeches, seminars, community clean up campaign home gardening aid, and many other community improvement projects.

Second, the P. V. Agronomy Club hopes to increase the number of members in the organization. We have started a membership drive for 1975. We hope to obtain a chapter with 100 members in it by March 1, 1975.

The P. V. Agronomy Club will end its year with the Agronomy Club Banquet on April 11, 1975. The year of 1975 looks to be a productive and promising year for the P. V. Agronomy Club.

## Graduating Engineers: If your heart's in San Francisco.....



### Mare Island is hiring!

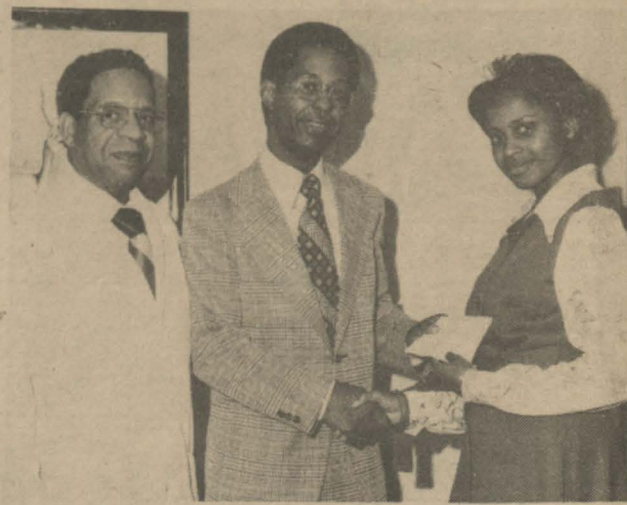
Live in the heart of Northern California—America's most famous work and play land. Ideal, smog-free climate, short drive to the Golden Gate, the wine country, lots more!

Work in a challenging environment at the West Coast's oldest and best-known naval institution, with unmatched potential for professional growth, reward and recognition.

SEND YOUR RESUME TO:  
EMPLOYMENT OFFICE  
[Code 170.2]

### Mare Island Naval Shipyard

Vallejo, California 94592  
An Equal Opportunity Employer  
U.S. Citizenship Required



E. R. Jones, L. D. Gillum, Lillian G. Lewis.

### Chem. Student To Begin Business Management Fellowship Program

Lillian G. Lewis, a chemistry student at Prairie View A&M will begin on March 10, serving in a Business Management Fellowship Program sponsored by Northrop Services, Inc. in Houston.

Miss Lewis, a freshman, will start as a laboratory assistant will be employed at various jobs and will be with Northrop during vacation periods and summers until she

graduates. She will then be eligible for permanent professional employment.

Langston D. Gillum represented Northrop in seeking a PV student for this fellowship program. Chemistry Department Chairman E. K. Jones recommended Miss Lewis and made final arrangements with Mr. Gillum for her participation in the program.

### PV Band Performs At Waller Junior High

The Prairie View A&M University Symphonic Band presented a concert to the members of Waller Jr. High School, February 21, 1975 at 10:30 a.m. Among the list of concert numbers the band played were First Suite For Military Band, Sinfonium, Music For a Summer Night and the March, Purple Pagent. The band also played a popular hit song written by the group "Chicago", called Just You and Me!

Dr. Lucius Wyatt, Director of the Symphonic Band stated that the song "Just You and Me," would be a change for the

Electronic and Electronics Engineers; and the annual Engineer of the Year Award presented at a luncheon held at the University of Houston.

Special exhibits and contests were held daily throughout the week.

young student in order for them not to become so bored with the somewhat slow movements of a regular concert number. It also shows the students that the Symphonic Band is capable of playing a variety of music to make a concert more interesting to younger persons as well as the adults.

On Tuesday, March 4, the band will present an open-air concert for the Prairie View student body and administration. Dates for the band traveling to do concerts have not yet been confirmed, but the band will be traveling to different schools.

Dr. Wyatt is doing an excellent job with the band, and it is the wish of every band member for all the students to join them in every concert that they perform. Good luck to the P.V. Symphonic Band, and Congratulation for a job well done.

When you're cranky about flavor.



24-HOUR SELF SERVICE

### HEMPSTEAD WASHATERIA

Top Loading Speed Queen and Philco-Bendix Machines

Across from City Hall — Hempstead, Texas

VA 6-8159

Your Patronage Appreciated

### Unemployment Rises Again

The Nation's unemployment rate reached 8.2 percent in January. It is the highest rate recorded over the entire post-World War II period. The highest level previously reached by the jobless rate were 7.5 in July 1958 and 7.9 percent in October 1949. The sharp increase from 7.1 percent in December to 8.2 percent in January reflects the layoff in the auto and other industries.

The following table shows the unemployment rates for December compared with the January figures for different categories.

Category	Unemployment Rate		%age increase
	December	January	
All workers	7.1	8.2	15
White	6.4	7.5	17
Black and other races	12.5	13.4	7
White collar workers	4.1	4.6	12
Blue collar workers	9.3	11.0	18
Service workers	7.1	8.1	14
Farm workers	2.4	3.6	50
Adult men	5.3	6.0	13
Adult women	7.2	8.1	13
Teenagers	18.1	20.8	15

Source: Bureau of Labor Statistics of U.S. Department of Labor

M. A. Soliman  
Professor of Economics

### National Teacher Exam Deadline Drawing Near

Less than two weeks remain for prospective teachers planning to take the National Teacher Examinations at Prairie View A&M University on April 5, 1975 to submit their registrations for these tests to Educational Testing Service, Princeton, New Jersey. Dr. G. H. Stafford, director, Counseling Center announced today. Registrations for the examinations must be forwarded so as to reach the Princeton Office not later than March 13. Dr. Stafford advised.

Bulletins of Information describing registration procedures and Registration Forms may be obtained from Counseling Center, PV A&M University or directly from the National Teacher Examinations, Educational Testing Service, Box 911, Princeton, New Jersey 08540.

At the one-day test session a candidate may take the

Common Examinations, which include tests in Professional Education and General Education, and one of the twenty-eight Area Examinations which are designed to evaluate understanding of the subject matter and pedagogical methods applicable to the candidate's choice of a teaching area.

After registering, each candidate will receive an Admission Ticket advising him of the exact location of the center to which he should report. Candidates for the Common Examinations will report at 8:30 a.m. on April 5, and should finish at approximately 12:30 p.m. Dr. Stafford said. Candidates for the Area Examinations will report at 1:30 p.m. and should finish at approximately 4:15 p.m., according to the time schedule for these examinations which has been set up by Educational Testing Service.

### Starlight Corner

Fashion Modeling is moving both forward and backward in clothing as far as history is concerned. At Prairie View, some of you young stylish students have already begun to adhere to the thought of being one of the best-dressed models in the world. Well, ladies and gentlemen, I shall now introduce to you a young lady who can be classified as one of the best-dressed models in the world. Presenting one of the most talked about models in the southwest, "The Lady with the Rags," Miss Bonnie Harris!

Yes, fellow student body members, Miss Bonnie Harris has made it successfully in the modeling career and she would like to help you too. Bonnie has recently established a school in the area of Houston, Texas especially for you fashionable young ladies and gentlemen who believe that "clothes make the person."

I talked with Bonnie to see what really goes on in a modeling school. Bonnie said, "The job of modeling is not really as hard as one really believes it is. In school you not only learn to walk, pivot and the use of facial expressions, you also learn the use of voice diction. When asked why voice

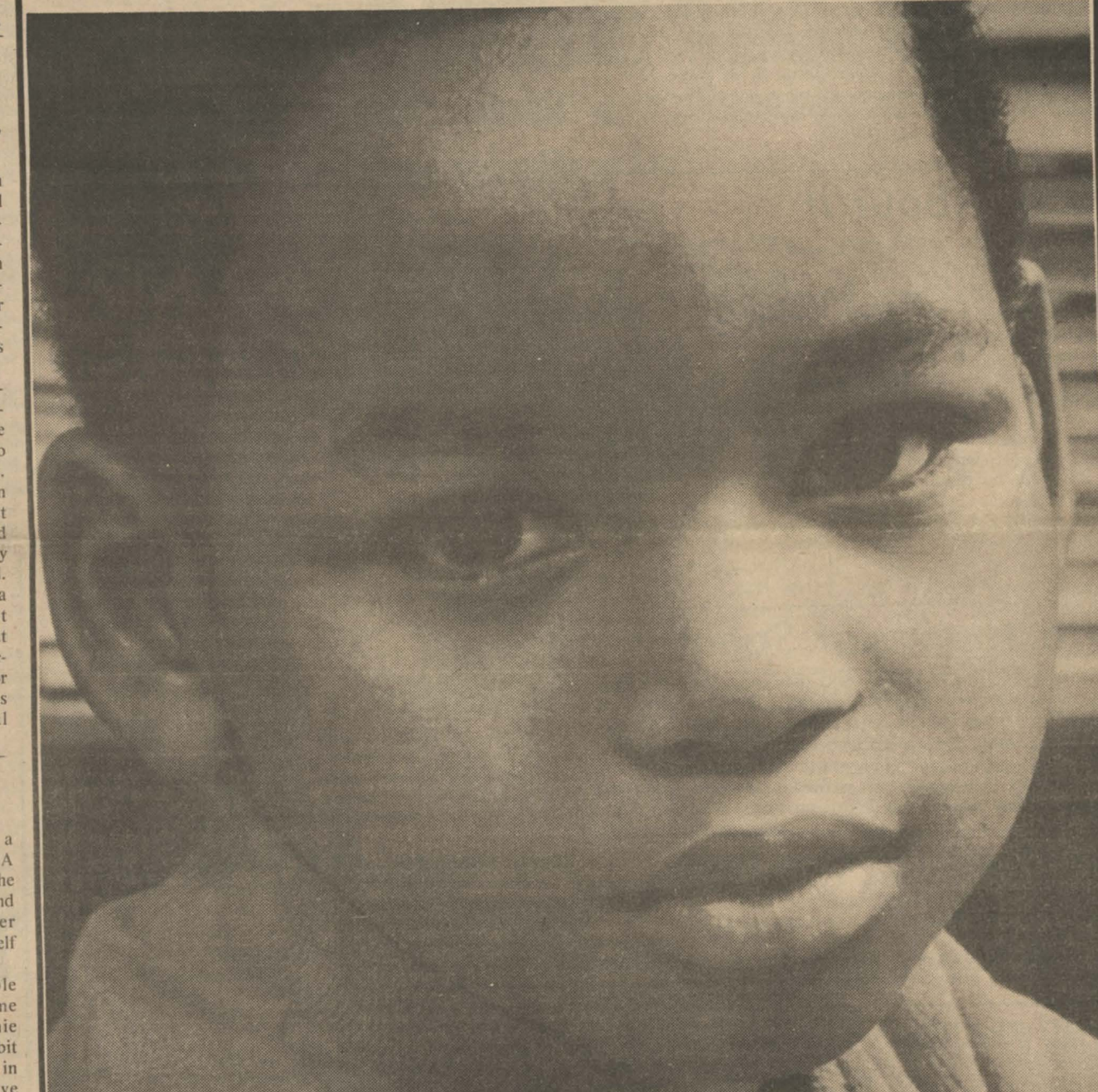
diction was so important to a model, Bonnie replied, "A model must sell herself to the audience as being graceful and poised. With the proper diction she could ruin herself with one phrase."

Before you fashionable young-blooded men become uninterested in what Bonnie has to say, read just a little bit more to see what Bonnie has in store. "Young men have become a leading aspect in the modeling career. It has been harder for them than for young ladies, but I see they are finally stepping out." Bonnie's school is for men as well as women.

Now listen men, I believe that women love to see men dress, so if you want more than your share of fame, fashion, and women, become one of Bonnie's prized students. Bonnie reemphasized, "I have special rates for college students to become a student of my school. And for you students who are interested in modeling, don't ever quit school, because you can always depend upon that education when everything in modeling does not work out. One's education makes the perfect model."

See STARLIGHT, Page 4

# Pictures talk. Some little boys don't.



Some inner cities have special schools. For little boys who don't talk.

Not mute little boys. But children so withdrawn so afraid of failure, they cannot make the slightest attempt to do anything at which they might fail.

Some don't talk. Some don't listen. Most don't behave. And all of them don't learn.

One day someone asked us to help.

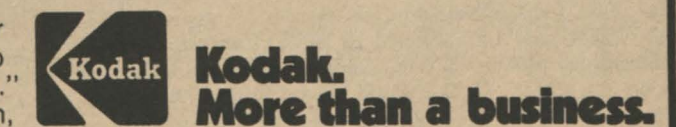
Kodak responded by working with the teachers. Showed them how, through the language of pictures, the children could communicate as they never could before. And the teachers sent the kids out to take pictures with their cameras.

And then the miracle. Little boys who had never said anything, looked at the pictures and began to talk. They said "This is my house." "This is my dog." "This is where I like to hide." They began to explain,

to describe, to communicate. And once the channels of communication had been opened, they began to learn.

What does Kodak stand to gain from this? Well, we're showing how our products can help a teacher — and maybe creating a whole new market. And we're also cultivating young customers who will someday buy their own cameras and film. But more than that, we're cultivating alert, educated citizens. Who will someday be responsible for our society.

After all, our business depends on society. So we care what happens to it.





# Editorial Comment Spring On The Yard — Right Around The Corner

Spring is just around the corner and things are once again in bloom. The weather's getting better, and warm clothes and cycling are becoming quite popular. The entertainment spectrum has finally gotten on the move with movies, dances and a Rufus show. Black History week was beautiful, but it would be nice if we could observe our Blackness every day. There are hopes for more entertainment and that helps make life a little easier on the yard. Campus spirit has been uplifted by a championship basketball team and of course, we've been put on the map by such things as our outstanding women's basketball team and our controversial enthusiasm at one of the games. The Miss P. V. pageant is coming up and that should give the campus something to rave about. Speaking of raving, organizations are jamming, partying, and doing their thing with their pledges. The pledges are once again running to and fro in utter confusion, as they always do each semester. On the other hand, pledges are putting on shows to entertain the public and identify their big brothers and sisters.

It's beginning to become quite obvious that couples are once again taking advantage of the weather and strolling (often in the direction of the cuts by night) and taking full advantage of the ring fever that's amidst. New buildings are springing up around the campus and things at P.V. are looking up. All and all P.V. is not such a bad place and the fees are lowest in the nation. P.V. is what you make it and you get out of it what you put into it. Let's not forget why we're here. So keep in mind that spring is right around the corner, so is MIDTERM.

Sweet Don

## Think About It . . .

by Donetta Carlock

Do you ever stop and think of all the people you pass by each day? Just a little hello or maybe a smile would help to unwind some of those worries that might trouble you. Have you ever noticed one person and even your fellow classmates that pass you by with their heads hung down? Sometimes we draw excuses to the attitudes that we see, such as: Well, maybe she's shy or maybe he didn't see me. Weainy the whole idea of holding your head down or even looking a different direction is to slip by without speaking, low just stop and think about it because this pertains to you also. To speak to a by-passer from a little of your time each day can't be all that bad. I'll bet you that that your day will seem a lot more fulfilling to you if you lend a small part of your time to a few hellos. A very nice person is a very friendly person and a lot more friendliness is needed in the world but most of all on our campus. So lets try to be unique and instead of always talking about someone which anybody can do be "somebody" by speaking to someone.

## Entertainment Spectrum

In order to clear the cloudy mist that hangs over P.V., the Earth, Wind and Fire concert was cancelled because of financial problems. The group was prepared to come either before or after the T.S.U. concert, but negotiations with them had to cease.

Our eyes are now looking toward the month of April for the ast concert of the year. It will definitely spotlight a fat and prominent artist, so get ready with your bread.

## From The Editor Each Issue

- 1. Editorial Comment
2. Entertainment Spectrum
3. Astrology
4. Prayers, Announcements, Quotations
5. Co-Op News and Career Placement Information

## THE PRAIRIE VIEW PANTHER

Published Bi-Weekly in the Interest of a Greater Prairie View A and M University. The PANTHER serves as the voice of Pantherland.

Prairie View A&M University is open to all, regardless of race, color, religion, or national origin.

EDITOR: Larry Randolph
Co-EDITOR: Donald McClure
LAYOUT ASSISTANT: Mary Brown
ADVERTISING: Cynthia Rogers
CLERICAL ASSISTANTS: Vickie Cole, Cynthia Sem
REPORTERS: Darlene Addison, Peggy Archer, Ralph Bonner, Donetta Carlock, Jan Dedman, William Hays III, Kenneth Edmonson, Clyde Johnson, Cynthia Johnson, Jerri Kemp, Claude Lewis, Sandra Mason, George Pope, Alton Reynard, Johnny Roberson, JoAnn Spencer, Clodus Stephenson

Any news items, advertising, or matters of interest to THE PANTHER may be presented to the Department of Student Publications, Room 108-112, New Classroom Building Telephone 857-2117. C. A. Wood, Publications Director.

REPRESENTED FOR NATIONAL ADVERTISING BY National Educational Advertising Services, Inc. 360 Lexington Ave., New York, N. Y. 10017



CARNIVAL PUBLICITY — Mrs. Ruby Summers, Coordinator of the PV-Houston Advisory Council talks with Paris Ely on "the show-75" at Channel 13 prior to the Career Carnival held at the Holiday Inn-South.

## Career Carnival In Houston Draws Hundreds of Students

Prairie View Advisory Council of the Greater Houston Area in cooperation with the University sponsored the "Second Annual College Career Carnival," Friday, February 28, 1975 from 6:00 to 10 p.m. at the Holiday Inn South 4640 S. Main St. Houston, Texas.

The Carnival was given for college bound high school juniors and seniors to provide them with an opportunity to discuss their future educational plans with informed Prairie View A&M University personnel which included Deans, Department Heads, Admissions and Financial Aid Officers.

The hundreds of students attending "boogied down" to the music of the Prairie View A&M University Dance Band; participated in drawings for door prizes; met with a number of the University's talented students; and witnessed a performance of the renowned

"Black Foxes." Trophies were presented to the two high schools with the largest number of students attending the carnival.

## Win Free Radio

The bros. of Phi Beta Sigma Fraternity, Inc., is proud to announce the give-a-way of a sparkling new Juliette FM-AM Portable Radio.

All one has to do is to donate \$0c to any Sigma for a ticket holding a number for the drawing of the prize winner on the first of April.

Don't be foolish and miss your chances of not being a fool on April Fool's Day possible.

So get your ticket now while they last. And remember you do not have to be present to win.

Reporter A.W.S.

## This Month Astrology

Sun Sign: Pisces
Dates Included: February 19 to March 20
Element: Water
Influence: Neptune/Jupiter/Venus
Symbols: Two Fish
Personality:

You are very sentimental and sociable, yet you have a tendency to be moody. Your keen sensitivity causes you to be very impressionable, so be careful in choosing your friends. Try to avoid negative types since you have a tendency to be negative yourself. Plan ahead and see things through. Don't become involved with self-doubt or daydreams. Use your sharp awareness to achieve success in the real world around you. Your ability to draw people to you in quiet communion is a great asset for happiness and success. In the long run, you are happiest when you are surrounded with people who keep you from brooding. Work which requires thought will help in this way, too. You have artistic talents and musical skills. You may often have inspiring dreams and visions of aiding others and preventing tragedy in the world you know. Your greatest treat is to sit down and weep with self-pitying emphasis. Sometimes solitude and meditation bring excellent results, but they too often bring misery and entrance into a never-never land from which it is difficult to escape. For this reason, you are better off with other near you and your mind bent on practical needs. Sometimes you are too quiet for your own good and need stimulation toward being ambitious and using your talents. Your birthstone is the aquamarine, a symbol of spiritual strength.

If one allots a sexual rating of some kind, then the Piscean must be described as highly sexed, pliable but extremely sensitive and romantic. Anyone who really cares about this type must think twice before involving them in some way-out deviation with a third party, as there are sure to be unpleasant repercussions.

Your Ideal Partner: Cancer, Scorpio, Capricorn, Taurus
Minor Problems with: Aries, Leo, Libra, Aquarius
Major Problems with: Gemini, Virgo, Sagittarius

## Finer Womanhood

The main ideals of Zeta Phi Beta Sorority, Incorporated are service, scholarship, sisterly love and finer womanhood. The meanings of the first three ideals are obvious, but to a Zeta pledgee the meaning of finer womanhood goes deeper than face value.

To a young man, the words by themselves may mean just a woman with a fine body or a nice shape. To a young lady, finer womanhood might mean jumping sharp everyday with the baddest clothes and shoes, and also a nice body to show them off with. But to a Zeta pledgee, finer womanhood represents all that she is striving for and all that each member of Zeta Phi Beta Sorority, Inc. exemplifies every day of her life as a woman of Zeta.

Finer womanhood is more than wearing dresses everyday, walking only on the sidewalks, or not going to dances because there are plenty of women who never wear dresses, never use sidewalks, and go to dances every night. Finer womanhood is no more than carrying yourself in such a manner that when you look in the mirror, you never have reason to be ashamed of what you see. And as long as you are happy in the knowledge that you're at peace with yourself, nothing anyone else can do or say should matter because you have to love yourself before anyone else can.

The old saying, "If you act like a lady you'll be treated like a lady" is no long true, as most women know. But as long as you know that you are a lady at all times, you'll be a better woman because of it. It takes a special kind of guts to be a

woman, period. But to be and exemplify finer womanhood is something that only a special kind of woman can do. This special kind of woman has a very special name — Zeta Phi Beta Sorority, Inc. And for those so called fine women who are not fortunate enough to be Zetas, let them keep in mind that finer womanhood is something that is felt within, and that they are without. Archonion Sharon E. Odum

Jan A. Dedman

## Science Training

CONTINUED from Page 1
Well fashion fans, I admire Bonnie for the bit of information given to me to relate to you. If there are any questions to ask about modeling, contact me, and I will fill you in on all Bonnie's little surprises. I do believe that Bonnie has developed a motto similar to Prairie View's motto. "We do produce the best." Until next time dear fans, this is J. D. bringing it to you directly from the stars.

The director of the program will be William E. Reid assisted by Lee Van Richardson and other members of the Department of Chemistry.

## A Thought For Today

Do something constructive every day, and you'll feel that your life is not a waste. By P.D.A.

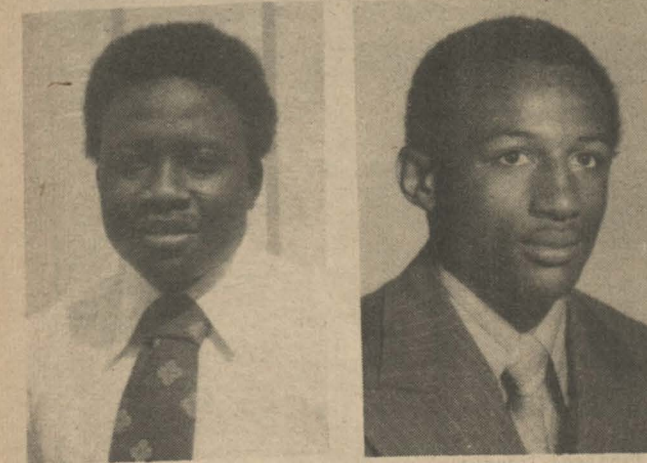
# SHARE THE RIDE WITH US THIS VACATION AND GET ON TO A GOOD THING.

Us means Greyhound, and a lot of your fellow students who are already on to a good thing. You leave when you like. Travel comfortably. Arrive refreshed and on time. You'll save money, too, over the increased standby air fares. Share the ride with us on weekends. Holidays. Anytime. Go Greyhound.

GREYHOUND SERVICE
TO ONE ROUND-WAY TRIP YOU CAN LEAVE YOU ARRIVE
Houston \$ 2.45 \$ 4.66 1:17 p.m. 2:25 p.m.
Waco 6.73 12.79 1:38 p.m. 4:50 p.m.
Dallas 10.40 19.76 1:38 p.m. 7:20 p.m.
Port Arthur 7.19 13.66 1:17 p.m. 5:35 p.m.
Fort Worth 10.40 19.76 1:38 p.m. 7:05 p.m.
Ask your agent about additional departures and return trips.
GREYHOUND AGENT: MRS. VICTOR PERKINS
Highway 290 Phone: 857-3509

Greyhound
A change for the better

## Navasotans Making Good . . .



## Levi Steptoe, Outstanding Senior In Agriculture Lowery Wins First Place At Regional Scientific Meet

The Prairie View A&M University Agronomy Club has selected Levi Steptoe as outstanding senior for the 1974-75 school year. Levi along with other outstanding seniors at institutions throughout the United States which are actively affiliated with the National Student Activities Subdivision will appear in the May-June issue of Agronomy News (National Newsletter of the American Society of Agronomy). In addition, each outstanding senior will receive an embossed plaque. The organization offering this recognition is the American Society of Agronomy, Madison, Wisconsin.

In addition to being an active member and officer of the Agronomy Club, Levi is also an active member of the Collegiate FFA Chapter and Alpha Tau Alpha. Some of his other activities here at Prairie View include:

- 1. Participation in three regional collegiate soil judging contests-Arkansas, Louisiana and Texas.
2. National membership chairman of the Student Activities Subdivision of the American Society of Agronomy.
3. Participation in three national meetings of the American Society of Agronomy-Miami, Las Vegas and Chicago.
4. Student Trainee with the U.S.D.A./SCS.
Levi is a young man of culture, high ideas and sound integrity. His capacity for hard work is an outstanding characteristic. In fact, he has worked to pay for more than half the cost of his education here at Prairie View A&M University. The College of Agriculture expects Levi to do well in his future endeavors.

## Brenham ISD Office Officials Recruit Teacher Ed. Grads

Mrs. Gladys Hogan, Brenham ISD Board Member, accompanied by Mrs. Louellen Pledger visited Prairie View A&M University recently to recruit prospective teachers for the Brenham Independent School District.

The Brenham School District is one of four school districts participating in the University's Experimental Elementary Education Project funded by Teacher Corps to provide a Competency Based Education training program for pre-service teachers. Also, student teachers in the regular teacher education program are involved in student teaching training activities in the district.

Mrs. Hogan and Mrs. Pledger are active participants in planning and development for both the University Teacher Center and Teacher Corps Programs.

## A Cappella Choir Plans Tour

CONTINUED from Page 1

trina Peterson, and Rhonda Washington. First Altos — Linda Johnson, section leader, Frankie Graves, Darlene Jackson, Joyce Jackson, Consilia Persons, T. Elaine Smith, Doris Tabor, Russye Toran and Delores Yearbrough. Second Altos — Arleen Kimble, section leader, Paula Lee, Brenda Greene, Pamela Baker, Annie Johnson, Desiree Wisby. First Tenors — Jackie Gentry, section leader, Harold Brown, John Bowers, and Paul Memefield. Second Tenors — Carl Davis, section leader, Willie Hawkins, and Maurice King, also David Woffard. Baritone — Victor Manor, section leader, Larry Stevens, Lincoln Calhoun, Dwayne Dillard, Michael Jackson, and Anthony Jones. Basses — Harold Demart, section leader, Michael Hawkins, George Hinch, Jerry Kellum, George Pope, Rickie Bradford, and Freddie Wade, III. Accompanist — Mrs. Shirley Haynes Beasley.

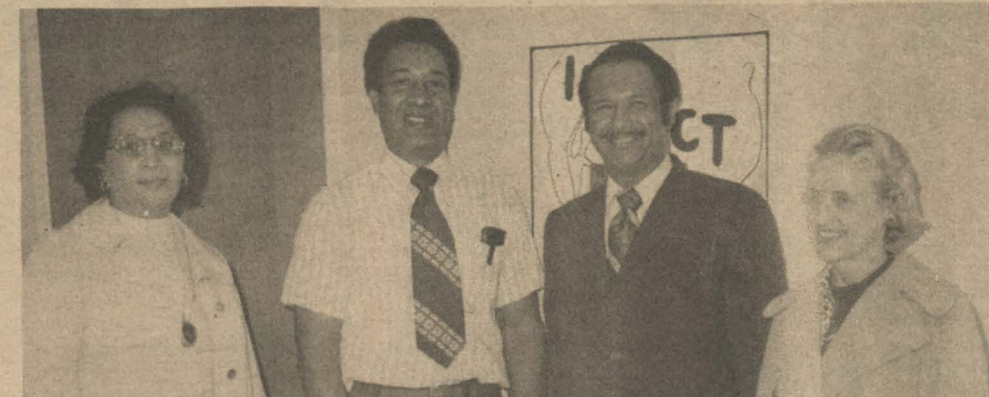
The choir is composed of a cross-section of students from various departments such as: Music, English, Mathematics, Agriculture, Business, Elementary Education, Biology, History, Sociology, Military Science, Industrial Education, Chemistry and many others.

What's the answer? For over 70 years Black Americans have been using Magic Shaving Powder (deplatory) instead of a razor. It actually "dissolves" hair rather than cutting it. It doesn't leave sharp tips on the hair it removes. And when used properly it gets them all. So it helps eliminate and prevent razor bumps.

No matter what formula you choose they are all fine products — the world's leaders. Blue Label (Regular Strength for the average beard), Red Label (Extra Strength for tough beards), Gold Magic — with a pleasant fragrance . . . or Magic Cream Shave — Ready-to-use formula that requires no mixing. And for after shave comfort, use Magic After Shave Skin Conditioner. It's especially formulated for deplatory users. Won't sting or burn!

NOTICE
Woman's Class Ring
Class of 1968
Lost in Library during September Registration
See Major Donnie Sampson
Burlison-Ware Hall
Ext. 4612

SANDERS Fabric Care Service
Your Professional Launderer and Dry Cleaners
826-2406 372-3623
Hempstead Waller



EDUCATORS VISIT — Brenham school officials shown in recent visit to Teacher Center: Mrs. Gladys Hogan, school board member, Brenham ISD; Dr. George Stafford, Director of Admissions; Bill Orman, Director, Teacher Center; and Mrs. Louellen Pledger, Supervisor of Instruction, Brenham ISD.

## a short story about beards and bumps How To Help Eliminate and Prevent Razor Bumps

Men shave in different ways because they have different beards and different types of hair:



Straight hair, wavy and curly hair can be shaved with a blade or electric razor. Shaving very curly hair (common among Black men) may require another way to avoid "razor bumps".

Diagram "D" shows what can happen when hair is very curly. This hair comes through the skin's surface and then curls back until the tip re-enters the skin, forming an "ingrown hair." A razor isn't always the best way to shave such hair. The hair can curl so close that the razor misses it. Those whiskers it does remove are cut at a sharp angle, making it easy for the hairs to re-enter the skin after a couple days' growth. The result is the same — either way.

WHAT'S THE ANSWER? For over 70 years Black Americans have been using Magic Shaving Powder (deplatory) instead of a razor. It actually "dissolves" hair rather than cutting it. It doesn't leave sharp tips on the hair it removes. And when used properly it gets them all. So it helps eliminate and prevent razor bumps.

No matter what formula you choose they are all fine products — the world's leaders. Blue Label (Regular Strength for the average beard), Red Label (Extra Strength for tough beards), Gold Magic — with a pleasant fragrance . . . or Magic Cream Shave — Ready-to-use formula that requires no mixing. And for after shave comfort, use Magic After Shave Skin Conditioner. It's especially formulated for deplatory users. Won't sting or burn!

Magic Shaving Products
AFTER SHAVE SKIN CONDITIONER
MAGIC FRAGRANT CREAM SHAVE DEPLATORY
MAGIC SHAVING POWDER
MAGIC SHAVING POWDER
For the complete story about beards and bumps, send stamped, self-addressed envelope for free illustrated booklet.
CARLSON CARLSON CHEMICAL COMPANY, P.O. BOX 3457, DEPT. F, SAVANNAH, GA. 31403



# Kollar Korner

## God Needs You

And he saith unto them, follow me, and I will make you fishers of men.

St. Matthew 4:19 KJV

This is a great time to be a professing Christian. It is a time which calls for courageous action. It is a time when enormous human problems are matched by immeasurable technological resources. When seen through the eyes of faith, it constitutes a time of great opportunity.

Do those words strike you as naive, commencement-style oratory from where you sit in a world where government is corruptible, business is dog-eat-dog, moral standards are scandalous, marriages flounder, inflation escalates, and international crises keep the world in tension?

They are all of these things — shallow, pious and naive — when we lose our focus on one fundamental spiritual fact: This is still our Father's World! God is still in charge; he is still in the arena. The God who sent His Son to redeem the world, has not — and never will — withdraw either his power or his love.

Let us remember this message when we seem to be overcome by the bewildering speed of social change or paralyzed by personal setbacks: God has not deserted our world. He is very much alive and well and at work in it. This is the life-saving message of the Christmas season from which we have just come and the Easter season towards which we are moving. In Christ, God visits and redeems his people.

It came to god's chosen people, the children of Israel, at a demoralizing low point in their national pilgrimage. Their deluded dreams of political destiny had blinded them to their divine calling and brought them to the brink of disaster. Their religious self righteousness had hardened into cruel legalisms. Their faithless pursuit of earthly securities had blinded them to God's covenant promises. They wandered about in a world of moral darkness because they had forgotten one fundamental fact: their world was still God's world.

There is a lesson for us here, we too, tend to forget the Lord's admonition: "My thoughts are not your thoughts and my ways are not your ways." We miss his still, small voice for our incessant talking. We consider his approach in Christ woefully inadequate to the magnitude of our modern problems because we are so conditioned to manipulating and programming computers, societies and persons.

But God surprises us. From our human perspective, he chose a very unimpressive way

By E. J. Johnson



to bring salvation to human kind. St. Matthew's gospel tells us how Jesus began his great work of redemption. It seems so deceptively simple. He went about sharing his insight concerning God's way of working in the world with any who would listen. He used no promotional gimmicks, no high-pressure salesmanship, no false advertising. He simply testified in word and in deed to the power of God which was throbbing in him. He invited men and women of all classes and conditions to join him in the common cause. In a few cryptic phrases, Matthew relates how Jesus invited two rugged fishermen, Simon Peter and Andrew, to become "fishers of men." He challenged them to do something more for God and for humanity.

All we have to do is to respond to the overtures of love and faithfulness which God is constantly showering upon us.

All we have to do is to respond to even the little bit we do know of God's truth and his will. We do not have to be expert theologians, nor wait until we have "all knowledge" in order to respond to the Master's call. Most of us already know enough of what is required of the Christian that we could radically transform the world where we live, were we to act upon it. As Mark Twain once said: "It's not the parts of the bible I don't understand which cause me problems, but the ones I do understand."

It ought to come as a great sense of relief to us as ordinary Christian folk that we are not held responsible for saving the entire world. But the Lord does hold us to account for that portion of his world which comes under our influence. Even you and I, limited though our insights and abilities may be, are vital to his kingdom. God has some meaningful work for us to do.

Moreover, the Christ can use all kinds and temperaments of persons in his cause. Look at the collection of original followers: A tempestuous Simon Peter; Andrew, an ordinary fisherman; Matthew, the not-too-popular tax collector; sinners off the streets, like Mary Magdalene and the woman at the Samaritan well; social outcasts such as Zacchaeus and unnamed hundreds who followed in his wake. This is the amazing nature of God's grace. He finds potential in all of us. In Christ, he invites us to follow him.

# Zetas Spotlight

This week Zeta's spotlight shines brightly on a very vivacious sister, Soror Tommie M. Taylor, a Capricorn, and a native of Montgomery, Alabama. She entered Howard University in September of 1969. As a freshman she was actively involved with the Residence Halls. She was instrumental in helping to establish Co-Ed rights for all residence halls, by going through the proper channels.

She became politically involved in 1970. The group was called the Alabama '86', a group of students who went to Alabama to get black people registered to vote. She also worked with District of Columbia Board of Elections. Her spare time was spent tutoring, modeling and singing in Howard's Gospel Choir. The Choir was something wonderful for all its members. It allowed opportunity for travel, and it covered most of the east coast. This group also learned the agony that goes into a group recording. They recorded 1 1/2

albums while she was a member.

She became a Zeta in 1972 a member of the first chapter, which is "Alpha." She served as Dean-of-Pledges and 2nd Anti-Basileus for the years 1972-1974. She became a representative to Graduate Affairs at the National Headquarters located in Washington D. C. She also worked at the Headquarters last summer part-time in preparation for the boule.

Soror Taylor's major was Political Science with a minor in Secondary Education and Business Administration. She became the recipient of Howard University's Womens Club Scholarship award in the Spring of '73. She has applied to Howard's Law School. She wishes to become a Legal Counselor for disadvantaged people. Soror Taylor says: "I wish to be known, not for any success I may gain, but for the efforts I have put forth to help others to succeed."

Rose Tarrow



DELTA's all smiles with visiting speaker Vivian Bowser of Houston. Occasion was Founder's Day Celebration on February 23.



AKA's Packed the house for Dr. Hortense Dixon's Founder's Day address in Student Center on February 16.

# Sigma Corner

The brothers of Phi Beta Sigma fraternity Inc., is very pleased to present Brother Charles Crockett as the brother to be spotlighted in the Sigma's Corner.

Brother Crockett is a native of Houston, Texas, where he graduated from Evan E. Worthing Sr. High. His outstanding duties there were such titles as Company Commander of Worthing AROTC program and was rewarded with BEST Company Commander SAI Citation and a citizenship medal. His graduation from high school was in May, 1970.

Brother Crockett arrived on the grounds of Prairie View in the Fall of 1970. Brother Crockett considers pledging Phi Beta Sigma Fraternity Inc. as one of his greatest achievements. Brother Crockett pledged under the line of "Second to None" and was known by his line brothers as "Adolf" of "AKA"!!!

Brother Crockett has served very faithfully toward efforts and cause of our fraternity. He has held such offices as: Dean of Pledges, Assist. Dean of Pledges, Sergeant-at-Arms, Financial Secretary, and Chairman of many committees. Regionally wise, Bro. Crockett served as the Undergraduate Jr. Associate Regional Director in 1973-74, and on the state level he served as Director of Undergraduate affairs in which he is presently holding that same position.

Bro. Crockett is a participant of the Army Advance Corps and has served as a member of the Jr. Fellow and Jr. Manager



Crockett

Association. His leadership ability towards the duties in being a part of the Jr. Fellow and Jr. Manager Association included such services as: Chairman of Ways and Means, Vice-President of the school year 1972-73, Jr. Fellow of the year in 1972 at Alexander Hall and is presently serving as Assist. Residence Hall Manager in Holley Hall.

Brother Crockett is a Geography Ed. Major with a minor interest in History. Upon graduation, Bro. Crockett is seeking to go into the U.S. Army as a commissioned officer.

Brother "Adolf" hobbies include dancing, drinking, swimming and playing dominoes.

Brother Adolf, also better known as "Adolf the Meat Tenderizer" is an upcoming May Graduate. Therefore, the remaining Bros. here at Prairie View would like to extend our deepest appreciation to you for upholding such hard working duties and yet keeping your Brotherhood "Together"!!!

# Omega Lamps Perform

Under the direction of Omegas Mike Lister and Donald McClure (Omega March masters) the lamps of the Omega Psi Phi put on the second show of the pledge period. The show was received by a large crowd and was performed in front of Drew Hall. The show was quite exciting. The Lamps fell off into a new bag with their renditions of traditional Omega marches. Their marches were highlighted by the eye catching This and That and Thundering and Lightning ripple. The lamps of Omega Psi Phi (who incidentally have deemed themselves "The Tovo Twenty, in honor of the late Bro. of the Psi

Phi Johnny "Bay Toven" Phillips) are now working on their third public presentation. The members of the Lampous club of Omega Psi Phi are as follows:

- Lamp Reginald Muckleroy (Turk)
- Lamp Brian Hall (Pretty Boy)
- Lamp Kenneth Smith (Ken)
- Lamp Thomas Parker (Chin)
- Lamp Chester Owens (Weed-Hopper)
- Lamp Dudley Mosley (Lip)
- Lamp Hardy Andrews (P.H.D.)
- Lamp Carl Gude (All-American)
- Lamp David Fagget (Fagget)
- Lamp Harold Brown (Old-Man)
- Lamp Roger Smith (Pres)

# AKA On The Move

The fine women of Alpha Kappa Alpha Sorority, Inc. are planning a very dynamic and meaningful trip in the month of March. To expand on the beauty and sisterly goals of the sorority, a Regional Convention is being held in Little Rock, Arkansas. Zeta Gamma and Zeta Gamma Omega Chapter, both of Prairie View, are extremely proud to respond to this worthwhile event and add a touch of our assets and leadership to the National Foundation of Alpha Kappa Alpha.

# Alpha Phi Omega News

The brothers of Alpha Phi Omega declare Feb. 28-March 2, National Heartfund Week-end.

The brothers of Sigma Pi chapter are planning to participate in the National Heart Fund Drive. The drive consists of a bathtub being pulled by each chapter in different cities throughout the nation. On Thursday and Friday, Feb. 27-28, we, the

- Lamp Theodore Sams (Vet)
- Lamp Lawrence Sams (Little-Vet)
- Lamp George Jones (Ju-Ju)
- Lamp Oswald Johnson (Ozzie)
- Lamp Ernest Burke (Split-End)
- Lamp Donald Hall (D. D.)
- Lamp Lonnie Lewis (Lonnie)
- Lamp Glen Gipson (Gip)
- Lamp George Arnold (Oof-Foo)
- Doc-Sweet
- Omega Public Relations

See ALPHA PHI, Page 7

**WARD'S PHARMACY**

"YOUR REXALL STORE"

**Waller County's Most Progressive and Most Modern Drug Store**

Telephone VA 6-2445    Hempstead, Texas

# Alpha Of The Week

Eta Gamma Chapter of Alpha Phi Alpha Inc. Prairie View A&M University Bro. Kenneth Price, a 1970 graduate of Texas Senior High, Texarkana, Texas has been chosen Alpha of the Week. Kenneth is a transfer student from East Texas State University, Commerce, Texas.

Bro. Price entered Prairie View A&M University in the fall of 1971 as an Architecture Major. He will be among the first students to graduate under the present Architectural Program here at P.V.U.

Out of 40 students who initially entered the field of Bro. Price's program, only 4 remain. Bro. Price has 185 out of the 200 hours needed to graduate. He plans to graduate in December of 1975. Since entering Prairie View A&M University, Bro. Price has been the recipient of a NROTC Scholarship; Vice-Pres. of the Student Chapter of the American Institute of Architects, a member of the Association of



Price

Junior Fellows and Junior-Managers; and also a member of Alpha Phi Alpha.

In the fall of 1972 Bro. Price pledged Alpha Phi Alpha, the Line named the Seven Disciples. Bro. Price holds the longest Undergraduate Membership in the chapter. Bro. Price is one of the most motivating forces in the Undergraduate chapter. Not only are his thoughts constructive, but very helpful. He provides a sense of humor, sometime very comical. His hobbies include chess, pool, tennis, cards. Upon graduation Bro. Price plans to become a Registered Architect and start his own firm. He is the son of Mr. and Mrs. Hoover Price, Texarkana, Texas. Alpha Phi Alpha salutes you Bro. K. P. Price.

William Hays III (Still Bill)



Dr. Alvin I. Thomas, president, Prairie View A&M University (right) presents a \$100.00 check to Cadet Lieutenant Charlie Ferguson III. Cadet Ferguson won the award for achieving the highest academic award as an Amy ROTC military science cadet enrolled in MS III. Cadet Ferguson of Texas City, Texas won the award with an overall grade point average of 3.77. He is majoring in computer science.

**S&N SUPER MARKET**

Waller

MEATS — GROCERIES  
APPLIANCES — SALES and SERVICE

# QUES Beat Grooves In Basketball

Looks like the fellowship of Grove Phi Grove will have to wait until next time to attempt to "Drag" the Bro. of the Omega Psi Phi Fraternity in basketball. The final score read Omega's 59, Groves 39. The game featured the best athletes from both teams. Outstanding players during the course of the game for the Grove team were Ellis, Wilson, Burrell and Jones.

The Omega team coached by Paul "Bozo" Johnson and Billy "Bear" Thompson are the defending champions of P.V.U's summer intramural league.

The Omega team coached by Paul "Bozo" Johnson and Billy "Bear" Thompson are the defending champions of P.V.U's summer intramural league.

# Canterbury Club Party Held

The Canterbury Club turned out to the evening church service, of Saint Francis, at 7:00 p.m. and following the service at 7:45 p.m., they began their party. The party was well organized with lots of eats and drinks. Records were played and everyone danced and were merry.

**STITCH AND KNIT SHOP**

\* FINE FABRICS \* PATTERNS \* NOTIONS  
\* QUALITY WITH ECONOMY  
\* PIECE GOODS — TRIMMINGS

HEMPSTEAD, TEXAS — 826-3781

**STRICKLAND'S VARIETY STORE**

Tele. 826-2131

1132 Austin                      Hempstead, Texas

**PARKERS GROCERY**

Highway 290  
HEMPSTEAD

BARBECUE — MEATS  
BLUE BELL ICE CREAM — GROCERIES

**ATTENTION**

**Financial Aid Applications**

for the 1975-76 Fall Semester are available now in the Student Aid Office. Students planning to attend PV next regular session and needing financial assistance (Loan and/or Work Study) must complete an application.

BE SMART — COMPLETE YOUR APPLICATION EARLY.

# Dr. Woolfolk Server Prof. Associations

Dr. George R. Woolfolk, Chairman, Department of History, has been named to the nomination committee of the Texas State Historical Association for 1975-76.

The Prairie View Historian has been invited to continue on the Humanities Advisory Panel, of the Texas Commission on the Arts and Humanities. The new Appointment will extend through February 1976.

**Alpha Phi**

CONTINUED from Page 6

David Jarrot, Austin TV personality and PR chairman for Heart Fund in Austin. After the presentation there will be a free barbecue at local restaurant.

The ladies of Gamma Sigma Sigma, the sisters of Alpha Phi Omega, will accompany us on this weekend of service and pleasure.

Brothers of Alpha Phi Omega

**1975 PANTHERLAND IN PRODUCTION NOW**

Call:  
Yearbook Office  
857-2117

# In the energy field, there aren't any easy answers

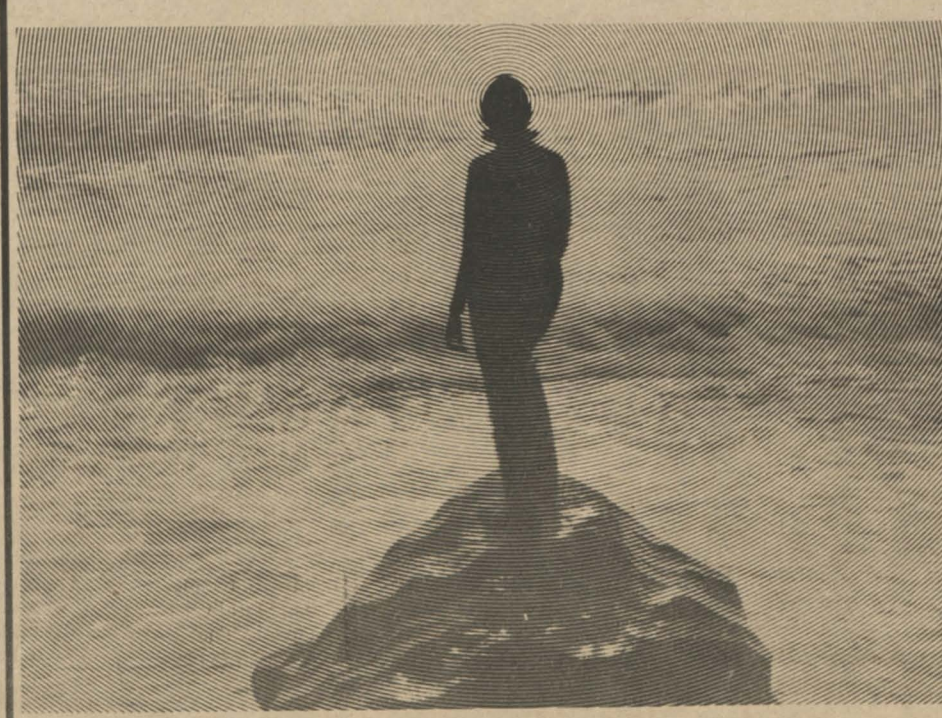
which is one very good reason for considering Atlantic Richfield for your career.

It's energy that has created and maintains the fabric of today's civilization. That's basic. But providing energy in vast amounts today — and preparing for the greater needs of tomorrow — is a tougher and more challenging problem than ever before. Now, new answers must be found to developing and utilizing energy — and its by-products — if we are to maintain our energy-based standards of living.

See our representative on campus or your Placement Director. Should that not be convenient, write to Mr. Q. J. Coats, Atlantic Richfield Co., 515 S. Flower St., Los Angeles, California 90071.

**ON CAMPUS INTERVIEWS MARCH 11**

**AtlanticRichfieldCompany**  
An equal opportunity employer, M/F.







Butch, at right, chats with teammate Kermit McAdory, who missed game with an injury.

Lone Panther Senior

Grant Enjoyed PV Experience

by Joe Booker

For Prairie View's main man on the basketball court Butch Grant, playing in the Southwestern Athletic Conference was an honor.

"I consider it to be an honor just to play in SWAC," stated Grant a 6-2 senior guard and Panther captain from New York City. "I played in predominant white leagues before coming to Prairie View. SWAC gets you ready and it's style of play helps get you ready for the pros. If you don't have talent you can't play in SWAC," he said.

Butch had a great season. He was the second leading scorer on the Panthers team (18.0) and his 78 assists led the team. "I think I waited too late to start scoring," said Butch. "After Gant (Charles) got hurt I felt I had to score more," he said.

There is one thing Butch regrets other than not winning the SWAC title and that was the Panthers not getting any ranks early in the season. "I felt in the first part of the season when we met six SWAC teams in the house (name players call Panther Field House), and won all but one I felt we should have been ranked," stated the

Panthers only senior on a team that posted a 16-10 record.

The Panthers completed the season with a 107-0 scoring average, second best in the NAIA rankings, but Butch and his teammates didn't think about it until midseason. "After we got the ranking in scoring we started thinking about it," said Butch who was named college player of the week when he scored 32 points and had 10 assists to lead PV to a 123-103 win over rival Texas Southern. "We then wanted to score a 100 each time we played. When people get ranked they usually do a lot to stay there," he continued.

As far as the season is concerned Butch feels it was a good one. "It was a fine season," he said. With a little more output we could have gone further. The thing that was so good is that we could get up for the big ones," he said.

He is a very mature young man and recently made a decision most young men wouldn't have made. "I had to decide if I should complete my college degree or take a job that paid around \$10,000," he said. "I ordered a 1974 Mark IV, but after I decided to attend Prairie View I let it go back. I figured

PV Relays, Golf, Tennis Meet Set March 27-28

The Annual Prairie View Relays, Golf and Tennis Meet will be held Thursday and Friday March 27-28. It will be the 45th PV Relays, the second oldest relays in Texas.

without a college degree that \$10,000 job wouldn't last long and the Mark IV wouldn't have either. It was a pretty steel grey," added Butch.

However, he didn't go without a ride. He drives a Monte Carlo. How many athletes can drive a Monte Carlo? But when you are your team's star guard you have to hold a certain image.



CHEERLEADERS — The group pictured added spirit for Prairie View A&M home football games. They are (l-r) Valerie Holmes, Cynthia Barefield, Larry Cook, Argilon Hammond, Melvin Johnson, Helen Shields, and Susan King.

PV Basketballers Had Banner Year

In just two short years Panther head basketball Coach Elwood Plummer turned his team into a winner.

The Panthers completed the 1974-75 season with a 16-10 season, 6-6 SWAC and 10-2 Zone record. They finished fourth in the Southwestern Athletic Conference and second in the NAIA Zone. They ended the season as the number two scoring team in the nation with a 107.0 game average.

Marvin Jackson, the Panther super soph ranked 10th in the nation in rebounding (14.2) and 20th in scoring (23.0). He was also named to the All Southwestern Athletic Conference first team.

Butch Grant, a 6-2 guard, and the only senior on the team was the second leading scorer on the team (18.0). He was the number 6th field goal shooter in the NCAA small colleges (63.3).

Seven Panthers completed the season scoring in double figures: Jackson (23.0), Grant (18.0), Fred Brooks (14.1),

Results

Astro-Belle Relays, Feb. 22

400 Meter Hurdles	63.2	1st place Andrea Bruce	63.9	2nd place Mary Ayers
440 Yd Dash	55.5	1st place Shirley Williams	57.7	2nd place Candace Glover
	60.4	5th place Lillie Guillory		
100 Yard Dash	10.9	1st place Charlene Branch	11.1	2nd place Carol Cummings
	11.2	3rd place Beverly Day		
100 Meter Hurdles	14.5	1st place Andrea Bruce	14.6	2nd place Mary Ayers
880 Yard Dash	2:83.3	4th place Mary Wallace		
220 Yard Dash	26.1	3rd place Lillie Guillory		
Sprint Medley Relay	1:46.1	1. Beverly Day	3. Shirley Williams	4. Carol Cummings
		2. Charlene Branch		
440 Yard Relay	46.4	1. Beverly Day	3. Carol Cummings	4. Shirley Williams
		2. Charlene Branch		
Mile Relay	4:00.3	1st place	3. Mary Wallace	4. Shirley Williams
		1. Candance Glover		
		2. Mary Ayers		
Long Jump	18'10"	1st place Andrea Bruce	16'11 1/2"	3rd place Mary Ayers
High Jump	5'4"	1st place Andrea Bruce		

Charles Gant (14.0), Johnny Miles (10.1), Robert Armstrong (14.1) and Kermit McAdory (10.0), all scored in double figures.

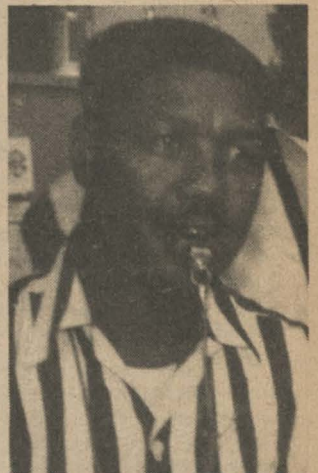
The Panthers set three school scoring records when they burnt the nets for a 136-116 win over Texas College, scoring 100 or more in seven consecutive games and scoring 100 or more in 19 games.

Services Held For Panther All-American John Burton

Funeral services were held recently in Fort Worth for John Burton, one of the Panthers all-time football greats.

Burton, 56, was serving as Industrial Arts teacher and coach at James E. Guinn Junior High at the time of his death. He also served as a football official for local games.

A member of the Tarrant County Human Relation Committee, Mr. Burton was described as one devoted to bettering race relations in Fort Worth and Tarrant County. He is survived by his widow, Mrs. Dimple Burton, a daughter, and other relatives and friends.



FORMER PANTHER — John Burton of Ft. Worth pictured in coaching uniform with whistle.

To change the system so it will serve the people and not control them, you must become a part of it.

Marshall Chevrolet-Olds, Inc.



Your Authorized Chevrolet and Oldsmobile Dealer

Tel. 826-2411

Hempstead, Texas P. O. Box 983

DIVISION OF CAREER EDUCATION & PLACEMENT

"It's Not Nice To Be Unemployed" SO LET US HELP YOU FIND EMPLOYMENT

The Division of Career Education and Placement is offering seminars on Resume Writing and Interviewing Techniques to be held every Tuesday from 5 p.m. to 7 p.m. The location is the Memorial Student Center Room 122, across from the Placement Office.

PURPOSE:

1. Tips on, how to "stand out" from the masses of other applicants.
2. How to apply for a position.
3. How to write a resume, what to expect in a rigorous interview.
4. Interview follow-up and how to handle rejection.
5. Employment Correspondence.

HEMPSTEAD CLEANERS

DRY CLEANING

Alterations — Laundry Service

Phone 826-3798 Box 893

Hempstead, Texas

1-DAY DRY CLEANING SERVICE

Schwarz Inc.

"103 Years of Continuous Service"

COMPLETE DEPARTMENT STORE and FURNITURE STORE

It's a pleasure doing business with you

Tel. 826-2466 P. O. Box 535 Hempstead, Texas

CITIZENS STATE BANK



MEMBER F. D. I. C.

P. O. Box 575 Phone 826-2431

HEMPSTEAD, TEXAS

Houston Press Club SCHOLARSHIPS

Applications from junior and senior journalism majors are now being considered for 1975-76 financial aid. Recipients must reside in Harris County.

Applications are due March 21. Interviews will be held in Houston March 28.

For details, check Dr. C. A. Wood, Publications Office or write:

SCHOLARSHIP COMMITTEE

Houston Press Club

Rice Hotel

Houston, Texas 77002