

Prairie View A&M University

Digital Commons @PVAMU

PV Panther Newspapers

Publications

2-28-1951

Panther- February 1951- Vol. XXV, NO.7

Prairie View A&M College

Follow this and additional works at: <https://digitalcommons.pvamu.edu/pv-panther-newspapers>

Recommended Citation

Prairie View A&M College. (1951). Panther- February 1951- Vol. XXV, NO.7., *Vol. XXV, NO.7* Retrieved from <https://digitalcommons.pvamu.edu/pv-panther-newspapers/838>

This Book is brought to you for free and open access by the Publications at Digital Commons @PVAMU. It has been accepted for inclusion in PV Panther Newspapers by an authorized administrator of Digital Commons @PVAMU. For more information, please contact hvkoshy@pvamu.edu.

PANTHER

"A Greater Panther Land"



YMCA officers are shown with their sponsor, Miss Ann Campbell (extreme left) during a recent meeting in the Recreation Center. The group discussed plans for raising their quota in the annual World Student Service Fund Drive. The recent "Ugly Man" contest was the first in a series of projects to raise funds.

YWCA Makes Appeal for Support in Annual WSSF Drive

The Y.M.C.A. and Y.W.C.A. are combining their efforts for a record-breaking "World Student Service Fund Drive."

This drive was opened by the proceeds from the "King Ugly" contest. The purpose of the W.S.S.F. Drive is to give aid to the

students of India in rebuilding their educational facilities and in getting necessary provisions for wholesome college life.

The W.S.S.F. Drive is a most worthy cause that each of us want to contribute to. Remember that each nickel and dime that

you give to the W.S.S.F. helps to make the total quota for Prairie View larger. When your alma mater is placed in line according to its contributions you want it to rank with the best—so give! Give us often and much as you can!

Episcopal Group Charge

Students Relegate Christianity To Inferior Position in Their Lives

The constituting convention of the National Episcopal Student Movement meeting at Cranbrook School, Bloomfield, Michigan, from December 27 to January 1, issued the following message:

"We students of the Protestant Episcopal Church in the U.S.A. in convention assembled, believe that students today tend to relegate the living Christ to an inferior position in their lives and to accept in His stead a comfortably nominal Christianity. We believe that unless man builds a society founded upon and permeated by the love for God under the Lordship of Christ, the result will be continued disintegration of society as evidenced in the current world situation.

"We believe that Christianity's answer to this current world situation, being the answer to all the problems of mankind, is the great love of God for man as revealed by the Life, Death, and Resurrection of Our Lord, Jesus Christ, and in the power of the Holy Spirit.

"We believe that our duty as Episcopal college and university students is to spread this gospel of Redemptive Love by seeking to know the Christ and to make Him known.

"We have established the National Canterbury Association to provide an opportunity for students to receive the teachings and

life of Christ through the faith and practice of the Episcopal Church, and to witness in our colleges and universities to the Lordship of Christ over the whole life of mankind."

The representatives from this province (VII) were: Kansas, Donald Cox (Kansas State), and Patrick Poole (University of Kansas); Missouri, Stanley Carlson (Drury), Lewis Long (Kansas City), Jack L. Pierson (Washington University), Ted Tulis (William Jewell) and Lucille Codding (University of Missouri), New Mexico, Hugh Hilleary (University of New Mexico); Oklahoma, Shirley Hill, Ann Oakes (University of Oklahoma), and Frances Reynolds (Oklahoma A.&M.); and Texas, William Nelson, Robert Schmidt, and Robert Stoltz (Baylor University), George Walker (SMU), Graham Pulkingham (University of Texas), Betty Bess (Rice), Diane McKee (Trinity University), Angelina Mowad (Texas Western University), Mrs. Wm. (Kitty) Nelson, and the Rev. John Herman of Waco, Tex.

Robert Maceo (SMU) and Jack L. Peirson (Washington University in St. Louis) were elected provincial delegates to the sixteen member national temporary executive division headed by John Morris (Columbia University).

The Rev. Gray M. Blandy (University of Texas) is the provincial secretary for college work.

State Physicians Will Meet Here March 5-8

Prairie View, Texas.—Dr. Theodore K. Lawless, nationally famous dermatologist has accepted an invitation to serve on the staff for the Post Graduate Medical Conference which will convene at Prairie View A. & M. College on March 5-8.

This annual assembly for Texas Negro physicians will also bring together leading specialists from the medical colleges of the University of Texas and Baylor. J. Roderick Brown, Pittsburgh, Pa., physician; Walter A. Punge and W. L. Smiley, medical specialists from St. Louis will lecture before the more than a hundred doctors who are expected to return to the classroom for a 4-day refresher.

The March Conference will be the fifteenth such occasion held at Prairie View for the purpose of acquainting the medical practitioner with some of the latest developments in medical science. The sessions will include clinical demonstrations, lectures, latest films and presentations of several research findings in the medical field.

(Continued on Page 2)

Have You Purchased Your Yearbook Yet?
Last & Complete Deadline
March 3
Office of information
Room 201 Adm. Bldg.

Your Exhibit Ready?

Educational Conference Will Present Business Topic

"The Negro Business in Texas" is the theme of the annual Educational Conference to be held Friday, March 9, 1951, in the auditorium. Plans are in process to make this conference one of the most successful of the conferences presented. Doctors Dean S. Yarbrough and George R. Woolfolk have been selected to present the subject from factual data gathered in a state wide survey and in-

vestigation. Dr. Evans, president, announced that both white and Negro citizens of Texas have given splendid, cooperation to the research staff. He further stated, "this is one meeting at Prairie View that has become a part of the thinking of the citizens of Texas."

Every year the conference has a capacity attendance. An attendance of 2,500 is expected.

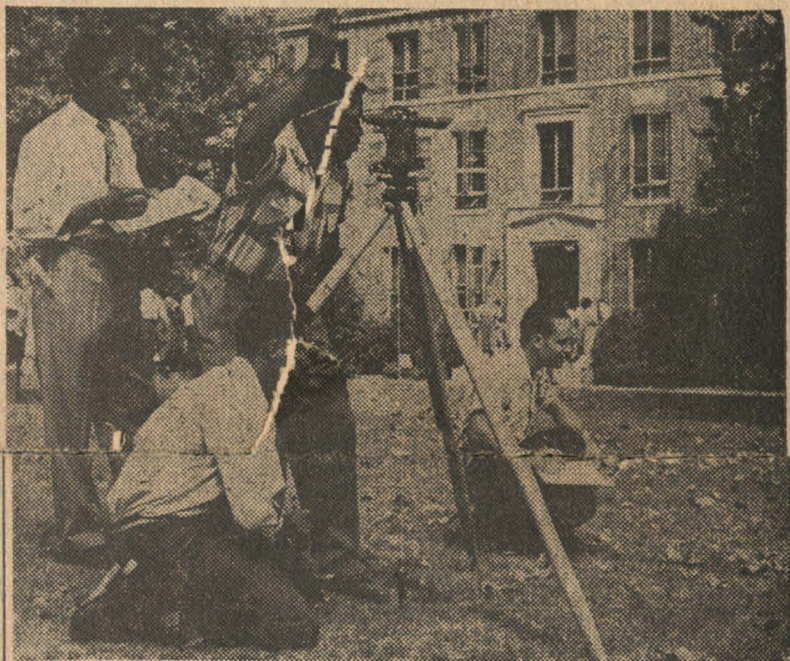
How's Your Imagination?

Contest Opened for Ideas on Entrance Gate to the College

The college has proposed the erection of an entrance gateway to the main campus. This gateway is a part of a long-range program now in progress at Prairie View; the superintendent of grounds, the School of Engineering and the Architecture Department are working diligently to crystalize this project. It is the feeling of this department that greater participation by the students will create a widespread and a more intimate interest in

the aesthetic appreciation of our environment.

Problem:
 This is a sketch problem designed to stimulate creative expression. The problem does not deal with exactness of measurements, materials or the actual construction. It is proposed so as to obtain new ideas as to what the students at Prairie View would like to see expressed in such an entrance, an entrance (Continued on Page 4)



New Engineering Program Underway

The expanding program in the various branches of engineering at Prairie View has stimulated the writing of a series of articles. These articles are designed to acquaint the public with the various programs and the personnel most intimately associated with them.

This, the first of the series is devoted primarily to the activities and functions of the department of Civil Engineering.

The field of civil engineering is extremely broad and it is common practice for advanced students to choose some specific phase for their major.

Immediately the question might arise as to what is a civil engineering course.

The origin of the term stems from the word civil, which pertains to the body of people as a whole or as would be specified in this case, public works.

Consequently we usually associate the civil engineer with the construction of roads, bridges, aqueducts, dams, docks, airfields, buildings, reservoirs, sewer system and various other things. You will also find many civil engineers engaged in contracting and consulting work.

If you see some students out on the campus peering through a telescope that is supported by

three legs you must remember that they are not astronomers, but instead potential engineers in the making. These students are enrolled in one of Prairie View's surveying classes. All engineering students and some industrial education students are required to take surveying, but only the civil engineering students are required to take several courses in it.

Our facilities for teaching civil engineering at Prairie View the new proposed engineering building is completed. We will then have laboratory facilities for highway and road building work, sanitation, hydraulic analysis and materials testing.

Acting in the capacity of organizer and head of the department we have Frederic M. Graham, who is a newcomer at Prairie View. Mr. Graham came to us from Iowa State College which is located in Ames, Iowa. At Iowa State he received his B.S. in Civil Engineering and his M.S. in Structural Engineering. While there, he was elected to Tau Beta Pi, the national engineering honorary, and he served in the capacity of a part-time instructor while pursuing his graduate work.

Mr. Graham is a veteran and spent two years in the South Pacific as field chief in an Engineer Aviation Battalion.

THE HAPPENINGS

(Social Jive)

TIME SPENT; EARS BENT
THOUGHTS ARISING — FOLKS SUR-
MISING
SHOULD BE NOTED — WE SAY
SO BRING IT IN TO US TODAY



Well the last of the ice and snow has gone (here's hoping), the weather is no longer an interesting topic of conversation, it was cool while it lasted. The last of the ice was found running water in the back of the Lil Sham.

While the weather outside was frightful inside the "Shamrock" was most delightful. With the recess lighting turned way down low the couples inside sang "Let It Snow, Let It Snow, Let It Snow."

Funny thing about the Lil Sham no matter what the weather you can always get together (on week-ends that is). Not only is this true of Suarez but Anderson Hall is also on the ball.

Which brings to mind another point co-eds of senior caliber, underclass females may soon have the same privileges as you—so "gather ye rose buds while ye may."

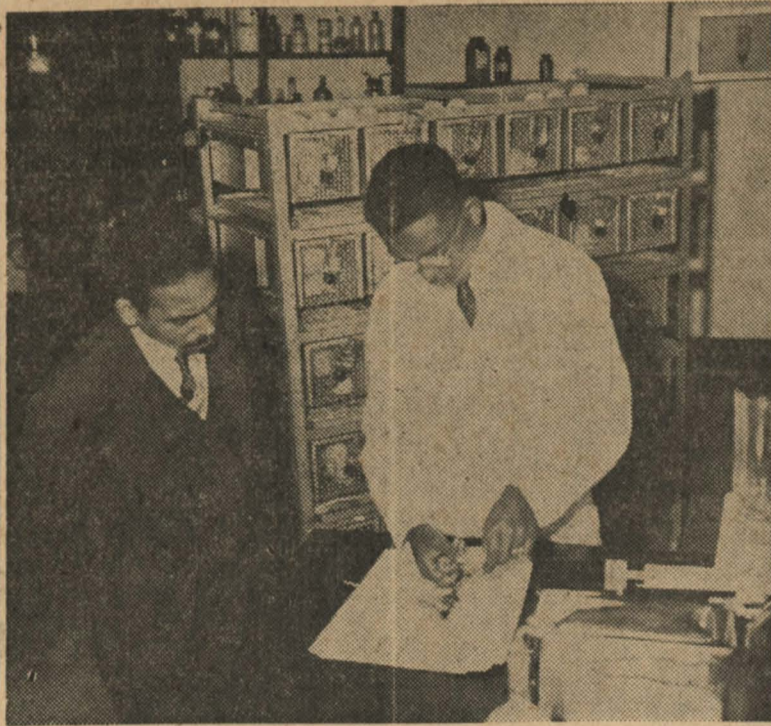
There seems to be secret society brewing in the masculine

hemisphere who qualifies and why—We are not in the know as yet.

Much to do was made over the beautiful co-eds and their lovely dresses in the Coronation Ball and rightly so. By no means, however, should the "fellers" feel slighted for they really outdid themselves clad in their glad rags at the ball. Most especially did the escort of the Grand Duchess look real gone—his air and attire were fit for a King no less a Duke.

It seems that current students-teachers always remember to come by "The Hill" when passing through, some even make the campus their regular week-ends haunt. Seems that absence (from Ole P. V.) makes the heart grow fonder for the dear ole place.

Last week was Brotherhood Week. Not much was said about it on the campus. Here's hoping that action spoke where words did not.



Natural Science Department Lists Several Research Projects

Dr. E. G. High, member of the local chemistry department, discussed his research project at the staff meeting of January 2. One phase of the research is concerned with kidney vitamin "A"; another phase treats the interrelationship between the new vitamin B-12 and the vitamin "A" metabolism. The mechanism of the conversion of carotene to vitamin "A" is also considered.

Other research projects in the department are as follows:

Biology: "Criteria for Selection of Method and Materials for Teachers of Science in the High School."—H. T. Jones.

"Criteria for Selection of Method and Materials for Beginning Courses in Science on the College Level."—H. T. Jones.

"A Scientific Approach to the Selection and Guidance of Freshmen Who Are Prospective Majors in Biology."—H. T. Jones.

"Factors Affecting Hypertension in Dog."—C. H. Nicholas.

"Low Temperature Tolerance of Animals."—T. P. Dooley.

"Comparative and Developmental Study of Hair."—T. P. Dooley.

"Melanophore Study in Insects."—T. P. Dooley.

"Antibiotics of Seeds, Fruits and Nuts."—T. P. Dooley.

Chemistry: "Condensation Products of Dicarboxylic Acids in Preparation of Heterocyclics."—E. Guinn.

"Chromotography in Biological Work."—E. Guinn.

"Preservation of Permanganates."—W. A. Samuels.

"Possible Use of Peanut Hulls as Feed."—W. A. Samuel.

"The Effect of Nucleic Acids on 'Aging' in Rats."—E. E. O'Banion.

"High Energy Diets in Chick Nutrition."—E. E. O'Banion.

"The Catalytic Oxidation of Lepidine."—E. E. O'Banion.

Physics: "The Transmission of Radio Waves at High Frequency."—G. R. Thomas.

Biographies of Faculty Members Planned

Dr. G. R. Woolfolk, director of the history department announced on January 10, 1951, that his department plans to sponsor a compilation of short biographies of the faculty members of Prairie View, with special emphasis on those members who have worked at the college over a long period of time.

Dr. Woolfolk stated that there has been a lack of facilities for such records in the past and that there is a need for some organized record of people who have contributed to the building and improvement of the institution. He cited Mr. C. E. Carpenter as an example of a member of the faculty who has served the college for 25 years. At this time Mr. Carpenter is preparing to retire. He was one of the first Negroes to hold the masters degree and that in languages from the University of California.

State Physicians

(Continued from Page 1)

Problems in public health education will receive special emphasis in a public assembly at 8 p.m. March 8. This program will be sponsored largely by the Texas Tuberculosis Association and the Hogg Foundation, University of Texas, both sponsors of the Conference. The Texas Medical Association and the Lone Star Medical Association are also assisting in the promotion of this in-service training feature for Texas Medical personnel.

HEMPSTEAD THEATRE

One Complete Show Saturday and Sunday Afternoons Starting at 2:30 P. M. Two Complete Shows Each Night — Starting Time 6:45 P. M.

March 1, 2
MGM Presents
Rudyard Kiplings
KIM
In Technicolor
with
ERROL FLYNN

March 3
SATAN'S CRADLE
DUNCAN RENALDO
LEO CARRILLO

March 4, 5
"King Solomon's Mines"
In Technicolor
DEBORAH KERR
STEWART GRANGER

March 6, 7
H. B. WARNER
In
KING OF KINGS

March 8, 9
Breakthrough
JOHN DAVID
and lovely
AGAR BRIAN SUZANNE

March 10
BORDER RANGERS
DON BARRY
ROBERT LOWERY

EDITORIALLY SPEAKING

LET'S ALL PURCHASE A YEARBOOK

A College yearbook enjoys a special position in the publication world. Mom and Pop and all the relatives eagerly await the yearbook's publication so they can see Junior's picture.

Producing a college yearbook is no different from any other business; promoting and selling is tremendously important. In planning the effort for increased sales, it is necessary beforehand to have some assurance that a certain number of books will be sold in order that the total cost will be taken care of. The cooperation of every organization as well as each student is required to make this undertaking a successful one.

By no means will the yearbook be devoted entirely to the senior class. Its scope will include the entire college. However, the proposed year book is going to be different—more comprehensive than those in the past. Accordingly students are advised to begin making their plans now to purchase the yearbook.

And remember, students, we need your cooperation!

THE PRAIRIE VIEW PANTHER

Published semi-monthly in the interest of a Greater Prairie View A. & M. College. The PANTHER serves as the voice of the Students of Pantherland.

A MEMBER OF THE INTERCOLLEGIATE PRESS

Editor-in-chief	ANDREW PERKINS
Managing Editor	JOSEPH R. LEE
News Department	
Editor	JEAN K. NORRIS
Assistant Editor	EVELYN BANKS
Assistant Editor	MARY E. FRY
Assistant Editor	NATHANIEL COKES
Feature Department	
Editor	LORRAINE KING
Assistant Editor	DRUCILLIA MOORE
Social News Department	
Editor	MARJORIE BIGSBY
Assistant Editor	BARBARA HINES
Assistant Editor	DRUCILLA LEWIS
Sports Department	
Editor	WILLIAM SMITH
Assistant Editor	FRANK CANNON
Exchange Editor	MARY H. MICKENS
Circulation Editor	CLAUDE FLANAGAN
Typist	ELLA LOUISE LATHAN
Faculty Adviser	C. A. WOOD
Printed by the Prairie View A. & M. College Dept. of Printing	W. H. STICKNEY

NATIONAL ADVERTISING REPRESENTATIVE
National Advertising Service Inc.
420 Madison Avenue, New York 17, N. Y.

Any news item or matters of interest to the PANTHER may be presented to the office of Publications, 201 Adm. Building, or the Office of the PANTHER—B-6 Adm. Building—Phone 167.

Application for second class permit pending.

Compliments of
THOMAS D. VAUGHN **J. PAT KNOX**
Special Representatives
NEW YORK LIFE INSURANCE CO.

SANDERS PHARMACY
Call 345 For Your Drug Wants
HEMPSTEAD
"WE APPRECIATE YOUR TRADE"

RADIO SALES & SERVICE
We Repair All Makes Radios, Phonographs and Public Address Systems
SATISFACTION GUARANTEED
HAROLD LA ROCHE, Prop.
Phone 4, Hempstead, Texas

BEN FRANKLIN STORE
HEMPSTEAD, TEXAS

B and H SAFETY LANE
WHEEL ALIGNMENT SHOCK ABSORBERS
WHEEL BALANCING ACCESSORIES
BRAKES DRUMS
AXLES SPRINGS
Phone 70
WALLER, TEXAS



Miss Prairie View is formally crowned Queen of the Campus by President E. B. Evans in ceremonies held on February 10 in the College Auditorium - Gymnasium. Around her is shown the unique "Human Curtain" which served as a background for the comely queen, Miss Velma Livingston. The unusual affair, which has been described by many as "the best ever," was staged by The Student Welfare Committee under the direction of Mrs. R. Von Charlton.

English Department Activities Announced

Miss A. L. Campbell, head Department of English, recently attended the annual meeting of the National Council of Teachers of English held in Milwaukee, Wisconsin. At this meeting Miss Campbell appeared on the program in the first conference series, speaking on the topic: "The Way Language is Learned and Used," analyzing situations and problems.

will be presented in the second semester.

The English Club sponsored by Mrs. Edwyna O. Wheadon is an alive and interesting activity of the department with Miss Jean Norris, a senior English major as president.

The Dramatics Club under the direction of Mr. Charles Minor and Assistant Director Miss Lois Baird, presented the Wiley College Log Cabin Players in an excellent presentation of barrie's, "The Little Minister." The large and enthusiastic Prairie View audience lent wholehearted support to the very capable cast of Wiley players. The Prairie View Players are now rehearsing for their initial performance of the school year. The play, "Heart Trouble,"

Mr. Edwin D. Sheen, head debate coach, and assistant Mrs. Grace Haynes Parker, are working diligently with members of the Varsity Debating Team on the national debate topic, RESOLVED: That the Non-Communist Nations of the world should form a new international organization.

The Prairie View debaters will again this year be host to inter-collegiate debaters from colleges and universities in the southwest and will include in their travel schedule debates with teams in Texas, Arkansas, and Missouri.

S. & N. SUPER MARKET
WALLER, TEXAS
Alvin Stasney and
Henry E. Naegeli

JOHNSON'S
RADIO SERVICE
Waller, Texas

ROTC Cadets Honored

Announcement of Selection of Cadet of the Month and Cadet Company of the Month for the months of November and December, 1950 are made. Cadet Sergeant Arthur Wright was chosen as Cadet of the month for November and he and his Company Commander, Cadet Captain McFadden were guests at dinner at the residence of Lt. Col. and Mrs. Chase on 11 December 1950.

Cadet Sergeant Austin Frederick the Battalion Sgt. Major, whose home is in Berclair, Texas, is selected as Cadet of the Month for December. He and his Commanding Officer, Cadet Lt. Col. Brailsford were guests of the PMS&T and Mrs. Chase at dinner on 14 January 1951.

Our cadet companies are making considerable progress in training and competition is keen. Co. A was the best company during the month of November and Co. C was the runner up. All organizations are now in training under arms and the development of interest and enthusiasm is most gratifying.

Physical Education

The officers of the Physical Education Club are as follows:
President Joe Washington
Vice-Pres. Edward Price
Secretary Mildred R. Hodges
Treasurer Ray Don Dillon
Asst. Treas. Clifford Donley
Sgt.-at-Arms Tom R. Solloman Jr.
Bus. Mgr. Nel Ruth Carruthers
Parliamentarian Charlie Ladd
Chaplain Willie Gene Harold
Program Committee

Chairman Eulalia Robinson
Entertain'm't Com. ... Alderine Hall
Reporter Lucy Randle

This club aspires to be the best on the campus not only in entertainment but also in scholastic achievements.

Mathematics Club

In a recent meeting of the Mathematics Majors and Minors the following persons were elected to serve as officers of the Mathematics Club for 1950-51.

President Robert Callahan
Secretary Evelyn Banks
Treasurer Lawrence Pugh

Mr. A. W. Randall, Mr. A. W. Calvin, and Mr. L. K. Williams are serving as sponsors for the club.

Business Adm. Club Officers Listed

President Clark English
Vice-President .. Clemie Browning
Secretary ... Bobbie Jean Thomas
Asst. Sec'y Kittydell Samuels
Treasurer Lee J. Davis
Bus. Mgr. Herman Caldwell
Parliamentarian Donnell Lee

Ross Service Station

HUMBLE PRODUCTS
WALLER, TEXAS

Mack's Grocery & Market

Phone 43-1 WALLER, TEXAS

HILL'S DRY GOODS CO.



Bolero Beauty

of "Linen-like" butcher . . . touched with rhinestone buttons . . . three wonderful pieces to wear everywhere—all summer! Sizes 10 to 18.

16.95

HANEY BROS.

WALLER, TEXAS

GROCERIES

MEATS

DRY GOODS

FEED

PICK & PAY FOOD MARKET

Low Everyday Prices

Phone 349

Hempstead, Texas

For dependable and prompt service

Always Send Your Clothes to

KEUNEKE'S CLEANERS

DYERS — FUR STORAGE — HATTERS
AMERICAN LAUNDRY — DRY CLEANERS

Phone 250

McCAIG SERVICE STATION

SINCLAIR PRODUCTS
SPECIALIZING IN WASHING AND GREASING
WESTERN AUTO MERCHANDISE
Waller, Texas Phone 102

**WESTERN
AUTO
ASSOCIATE
STORE**

**To Every Family That
Wants to Save Money!**

HOME OWNED BY
PAUL J. REVAK

Phone 496
Hempstead, Texas

Dangerfield Wins Annual NFA Tournament

Prairie View, Texas, Feb. 17, 1951.—The Annual N.F.A. High School Tournament held at Prairie View ended in a dashing win by Daingerfield High School, coached by Mack Johnson, a former Prairie View cage star.

The teams present were representatives of the five N.F.A. districts in Texas, each selected by playoffs. The schools represented were: Daingerfield, Mt. Grove, Neches, Wharton, Rockdale, Luling, Pruitt-Atlanta, West Columbia, Huntsville, and Dixie-Tyler.

The semi-finals pitted Daingerfield against Neches and Pruitt against Dixie with Dixie and

Daingerfield being catapulted into the finals; Pruitt and Neches being dropped into the consolation finals. Pruitt High School won the consolation game.

Daingerfield was impressive in their victory with White, and Smith being definitely tagged as potential college stars. The Dixie cagers battled hard until the last second clicked off, but the scoreboard read: Daingerfield, 62 — Dixie, 49. Mr. O. J. Thomas, head of the tournament, presented Dr. J. M. Drew, dean of the college, who in turn presented the winning teams. The tournament as a whole presented a better grade

Panthers Will Close Cage Schedule at Langston

The '50-'51 Panther basketball players will end their regular season of play with their engagement with Langston University at Langston, Oklahoma, on March 2-3.

The team has received ardent support from the local fans throughout the season, though winning only two conference games and neither at home. However, all parties are in agreement that the Panthers have fought hard and have been very stubborn in their losses to their opponents. The players have no need to be downhearted, nor have we any reason to be ashamed. We are still proud of our gallant team, who undoubtedly did their best in the S.W.C. race.

Captain Arthur Matherson is presently one of the leading candidates for a first-string member of All Southwest Conference Team. Several noted authorities in our loop have already tagged him for a berth among the first two guard positions.

of basketball than has been exhibited in previous years.

Daingerfield				
	F.G.	F.T.	Fouls	T.P.
Dooley	2	2	1	6
Everett	5	1	4	11
Harper	1	0	4	2
Smith	10	2	1	22
White	9	0	3	18
Evans	0	1	0	1
Thomas	1	0	1	2
Totals	28	6	14	62
Dixie				
	F.G.	F.T.	Fouls	T.P.
Lacy	8	1	2	17
Young	8	6	1	22
Griffin	1	1	3	3
Walker	0	0	2	0
Williams	1	2	0	4
Gardner	1	1	1	3
Totals	19	11	9	49

Entrance Gate Contest

(Continued from Page 1) symbolic of life at Prairie View, an entrance which will depict to a visitor the rapid progress and abundance of opportunities afforded the people of Texas.

The entrance is to be located on the North-South highway running through the campus and in sight of the new administration building on the left and the residential sections on the right. The highway is 24 feet wide (since this is a state highway it will be impractical to design an arch over this entrance). On each side of this highway there is a grass strip 43 feet wide. This strip is presently landscaped by pine trees. It is suggested that this landscaping be integrated in the design of the entrance. Additional landscaping at the immediate entrance will be of interest.

Required Drawings

1. Plat Plan of Entrance at 1/16 in.—2 ft.
2. Elevation of Entrance at 1/4 in.—4 ft.
3. Sketch or Perspective showing entrance and landscaping.

Rules Governing the Competition

1. Students desirous of entering

the competition must submit an application blank bearing his name, department in which he is enrolled, classification. (Freshman, Sophomore, etc.) and major field of concentration.

2. Programs were issued Friday, February 23, 1951, and completed drawings must be turned in not later than 5:00 p.m. Saturday, March 10, 1951, at the Department of Architecture, Room 200, I. E. Building.

3. Problems must be done on illustration board 19 in. x 25 in. and in any medium of color.

4. Names of student must appear on the back of drawing in the upper right hand corner of illustration.

5. Judgment of the sketches will be held on Monday, March 5, 1951, by an impartial jury consisting of seven members taken from the various departments of the institution.

6. Prizes will be awarded as follows:
1st prize of \$10.00.
2nd prize of \$5.00.
3rd prize 3 honorable mentions.

SUGGITT BROS.

DODGE AND PLYMOUTH SALES AND SERVICE

EXPERT BODY REPAIRS ON ALL MAKES OF CARS
OUR CUSTOMERS ARE OUR BEST ADVERTISEMENT

WALLER, TEXAS

SANITARY MARKET & GROCERY

Phone 240 and Get the Best in

MEATS, STAPLE AND FANCY GROCERIES

"Cleanliness Is Our Motto"

Hempstead, Texas

SPOTLESS LAUNDRY -- CLEANERS

"BUNDLES OF SATISFACTION"

Phone 106

HEMPSTEAD, TEXAS

NEWCOMB FURNITURE CO.

Crosley and Norge Refrigerators
Domestic Sewing Machines
Crosley and Zenith Radios
Washing Machines
Zenith Television — Furniture

Hempstead, Texas

J. B. SMITH CO.

Hempstead's Complete Dry Goods Store

We Earnestly Solicit Your Patronage and

Will Always Strive To Please You.

J. B. SMITH CO.

HEMPSTEAD, TEXAS

A. C. RAMSAY, Mgr.

Hempstead Bakery

For the Best in Pastry, Pies,
Cakes and Cookies
HEMPSTEAD, TEXAS

Students!

For Neater Work and
Higher Grades
Always Use

MASTERPIECE

School Supplies

There Is No Substitute
for Quality

Sold by the
COLLEGE EXCHANGE

Compliments of
HIRSCH BROS.
CANDY CO.
Wholesale Dealers in
Delicious Candies
205 San Jacinto St. Houston

Hits the Spot

Lilly

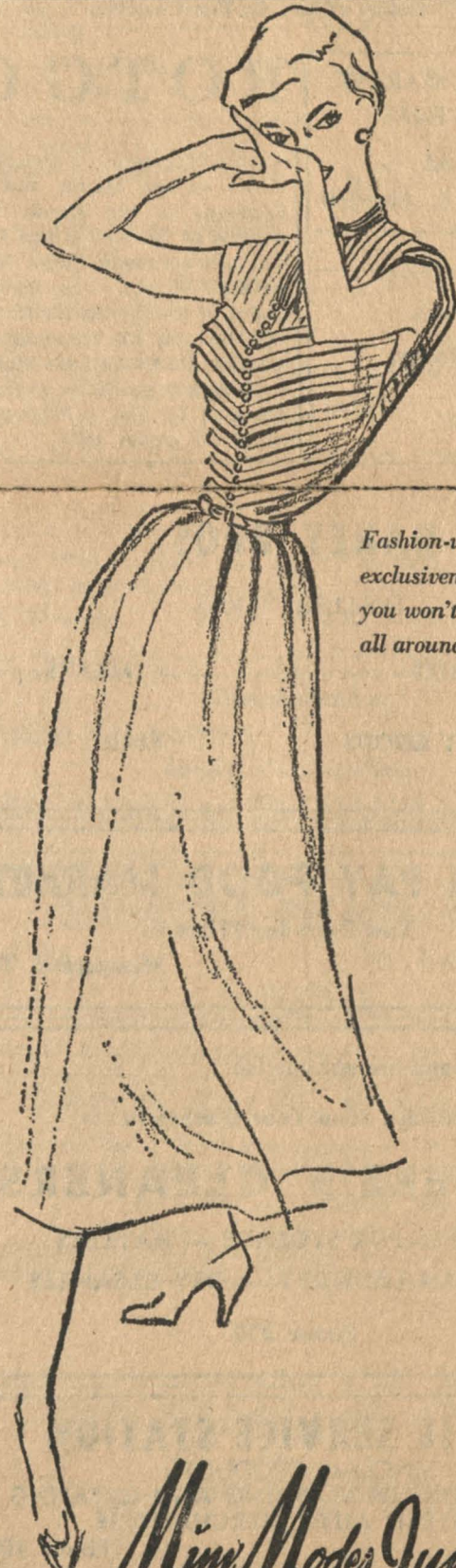
MELLO KREAM

Call For "

Lilly

Mello Kream" — By Name

BRYAN, TEXAS



*Fashion-wise, budget-wise
exclusiveness
you won't meet
all around town!*

\$16.98

Minx Modes Juniors

...okayed by the famous Minx Modes Junior Board of Review... and a very delightful part of the Spring picture. Fine rayon tissue faille with tucked bodice. Fire Amber, Yellow Iris, French Aqua, Navy. Sizes 9 to 17.

EXCLUSIVELY AT

FRENKIL'S

HEMPSTEAD, TEXAS