

Prairie View A&M University

Digital Commons @PVAMU

---

PV Panther Newspapers

Publications

---

2-1946

## Panther - February 1946 - Vol. XX No. 2

Prairie View University

Follow this and additional works at: <https://digitalcommons.pvamu.edu/pv-panther-newspapers>

---

### Recommended Citation

Prairie View University. (1946). Panther - February 1946 - Vol. XX No. 2., *Vol. XX No. 2* Retrieved from <https://digitalcommons.pvamu.edu/pv-panther-newspapers/812>

This Book is brought to you for free and open access by the Publications at Digital Commons @PVAMU. It has been accepted for inclusion in PV Panther Newspapers by an authorized administrator of Digital Commons @PVAMU. For more information, please contact [hvkoshy@pvamu.edu](mailto:hvkoshy@pvamu.edu).

## CORONATION BALL HELD IN GYMNASIUM JANUARY 26

### ARBOR WEEK FEBRUARY 4-9

Arbor Week, a period at Prairie View when special attention is accorded the planting of trees, flowers and shrubs, was observed this year February 4-9. In accordance with the activities of this Week, more than two thousand trees and shrubs have been added to the campus during the past ten years.

All of the important clubs on the campus contribute by giving plantings to be placed on the campus at designated sites.

### OUTSTANDING PERSONS TO VISIT CAMPUS

By RUTH E. VAUGHN

Men and women who are prominent in the public life of the United States are scheduled to visit Prairie View during the month of February.

One such person is Mrs. Oveta C. Hobby, formerly Colonel Hobby, who had charge of the recruitment and training of the Women's Auxiliary Corps, a branch of the United States Army, and who did a splendid job of it. Mrs. Hobby, now retired to civilian life, is associated with her husband, ex-governor Hobby, in the publishing of the daily *Houston Post*.

During an interview with Principal W. R. Banks, it was revealed that "while the date has not been definitely set, Mrs. Hobby indicates that she will be available any time during the first two weeks in February."

Also to visit Prairie View this month is Brigadier General Benjamin O. Davis, the highest ranking Negro officer in the United States Army. His arrival is being anticipated with much enthusiasm. General Davis desires to come to Prairie View, and a request has been made to Secretary of War Patterson to grant him a leave to make this visit.

The coming of the eminent General should be a significant event in the experience of the members of the Prairie View community.

### Out-of-Town Visitors At the Coronation

Accompanying Mrs. Lula Madison White, Houston, Texas, who was scheduled to crown the Queen, was Senorita Frederico Hosen, formerly of Costa Rica, Central America, who is Head Surgeon at the Houston Negro Hospital.

Down from Dallas, Texas, to see her daughter, Doris Jean Peppers, crowned Queen at Prairie View University, was Mrs. Eva Peppers. She was accompanied by a friend.

Several ex-students of Prairie View College also attended the Coronation.

### SCENE AT CORONATION BALL



### DORIS J. PEPPERS IS CROWNED 'MISS P. VIEW'

Encompassed by a colorful array of lights, Miss Doris Jean Peppers was crowned "Miss Prairie View" at the Annual Coronation Ball held this year, January 26, 1946.

First to be seen during the ceremonies were the atmosphere couples, who casually walked out along the sidelines to lend background and dignity to the proceedings. Next, sixteen young ladies beautifully gowned in different shades of blue were escorted to the front of the stage by young men. The stage couples then entered from the rear of the Auditorium. The organist changed the tempo of her music, the spectators arose, and the Queen entered. She was handsomely attired in a dress of white brocaded satin, which was styled for her by a friend who studied in Paris, France. The Marie Antoinette dress had a bustle in the back, with a low, rounded neckline decorated with sequins. She was escorted by Mr. Ivory Lafleur.

Because of car trouble, Mrs. Lula Madison White, who was scheduled to crown the Queen, did not arrive in time to do so. In her absence, Dean M. E. Suarez of Prairie View University crowned "Miss Prairie View."

The flower girls were Misses Hattie Pearl Hilliard and Hortense Kilpatrick. Master Alfred Poindexter, Jr., was the crown bearer, and Little Misses Lois Marie Dooley and Haskelline Houston held the train of Miss Peppers' dress.

The ceremony lasted about twenty-five minutes, with Miss Dorthella White proclaiming each arrival, as Mistress of Ceremonies.

### OTHER PARTICIPANTS IN THE PROCESSION

Among the girls and their escorts who were atmosphere couples were Allene Simmons, who was escorted by Roscoe McCain; Rosie Lee Allen, Maud Frazier, Jr.; Minnie Mae Hall, Joe Hinton, Ruth Phelps, Valree Thompson; Floria Frances Robinson, Issac McNeil; and Elizabeth Knowles, Lewis Ward.

Listed among the couples in front of the stage were Anita Louise Johnson, Rudolph Rasmus; Collen Pope, W. T. Grady; Inez Phillips, Louis Drisdale; Fannie McGhee, Alonza O. C. Sargent; Rose Marie Phelps, Myles Wooten; Alma Young, Emmons Parrish; Joyce Matthews, Ward Dillard; Ramona Vaughn, Charlie Gardner; Marie Beverly, Elsworth Drummer; Dolores Gerald, Levester Richardson; Vera Bell, J. W. Anderson; Gloria Ells, W. J. Osborne; Dolores Williams, Earl Williams.

(Continued on Page Three)

### THE UNIVERSITY WILL BUILD A TRAILER CAMP

By RUTH VAUGHN

Because of the large number of applications for entrance to Prairie View from veterans of World War II, and because of the housing shortage, plans for the building of a trailer camp have been made, according to a statement recently made by Principal Banks.

Prairie View is getting from the Federal government twenty-five trailers which are to be used for the purpose of providing living accommodations for former GI's. These units are to house about seventy-five men.

Another request has been made of the Federal government to assist the University in securing housing facilities for one hundred married veterans and 400 single men. How far the request will be filled cannot be predicted. However, if the request is granted, the housing shortage will most likely be greatly relieved.

"The records in the Veteran Counselor's Office reveal that there are about 800 applications from G. I.'s for admittance to the institution and the applications are pouring in daily," said Principal Banks. "Inasmuch as the institution is not able to accommodate all those who apply, it is using the opportunity to select the most deserving of those who apply as far as housing is available."

**The Panther  
Is Our Paper**

### A Backward Glance at "Miss Prairie View"

By WILLIE JEAN PERRY

The first young lady of the campus, who is selected by her fellow students as "Miss Prairie View" because of her outstanding personality, dignity, scholarship, and character, was Miss Wilma Roligan, who reigned as "Miss Prairie View" in 1932-33. She has been succeeded by:

Miss Arthuryne Andrews	1933-34
Miss Hattie Givens	1934-35
Miss Loudelle Routee	1935-36

(Continued on Page Three)

### LET'S LOOK AT THE ANNUAL

By MARIE Y. BEVERLY

The Panther Annual staff composed of Ramona Vaughn, Editor; Calvin Rolark, Business Manager; Marie Beverly, Ruth Vaughn, Julia Levy, and Hortense Williams, Associate Editors; Eva Mims, Secretary; and Charles Montgomery, Information Clerk, is trying to put out the largest and best annual yet to be published.

(Continued on Page Three)

### PROF GEORGE W BUCHANAN GOES ON LIMITED RETIREMENT

By R. W. HILLIARD

After 33½ years of continuous service at Prairie View State College, Prof. G. W. Buchanan, Manager of the College Exchange goes on limited retirement this month. He has drawn 402 monthly checks from the state. When asked what advice he would give a young person on the art of holding a job, he replied: "When I arise in the morning my concern is first, prayer; second, breakfast; and third, the job for which I am paid." He has held only three jobs since his college days at Bishop and Prairie View. One was at Timpson, Texas, as vice principal for four years; a second at Hempstead, Texas, for one year as vice principal; and the third at Prairie View for 33½ years. At Prairie View he has served as teacher of Mathematics, History and Librarian. He was Manager of the Exchange and Dining Hall and for the past 25 years Manager of the Exchange alone. His four children are all college graduates. Over the years Prof. Buchanan has

given advice to hundreds of young people, among them Dr. F. D. Patterson, now President of Tuskegee Institute.

Fourteen years ago he received quite a bit of publicity in the Houston daily papers and over the radio when he accidentally backed into a city truck, and finding no one in the truck he went to the city hall to report the mishap and pay the damages. The city officials waived the charges and complimented him for his honesty.

Principal Banks had this to say regarding Prof. Buchanan, "He has been in the employment of Prairie View University continuously since his graduation, and for nearly a generation he has sustained a consistent reputation of being loyal, conscientious, faithful, industrious and honest."

Mr. Leon Mitchell, Telephone Repairman, former Head Telephone Operator at the College, and a veteran of World War II, took over on February 1 Mr. Buchanan's duties as Manager of the College Exchange.

The Panther

"Voice of the Students"

Published monthly by the students of Prairie View University.

Editorial Staff for This Issue

Editor Ramona Vaughn, Business Manager Calvin Rolark, Secretary Ruth Vaughn, Feature Editors Willie Jean Perry, Marie Beverly, Sports Editor Dorthella White, Staff Poet Billie Jane Lewis, Club Editors Ellen Woody, Harvey Dickerson, Doris Countee, Eva Mae Mims

Printed by the Printing Department of Prairie View University.

FEBRUARY, 1946

EDITORIALS

Choice of a Career

By RUTH VAUGHN

The choice of a career is an important step in anyone's life. There are some factors that enter into a choice of a career. In the first place, do not let anyone else choose a vocation for you. One must choose his career himself.

There are some questions one must ask himself before he chooses a career. A few of them are:

Is it interesting to me? Do I think I'll do well in it? Do I think I'll be happy at it? Is there any chance of advancement?

Are the hours and health conditions good?

If the answers to these questions are satisfactory, then your choice of career is good. You must determine whether or not the career will afford some opportunity for advancement, or whether it is a "dead-end" job, whether it will lead you somewhere or nowhere at all.

Although these factors do play an important part in one's choice, there are two factors even more important. They are ability and interest. Both play a large part in determining whether one will or will not be successful in his chosen field. One without the other is of no use whatever.

And above all, prepare yourself for whatever you choose, and prepare yourself for something. Don't be like the boy who told his father, "Well, I've got my college degree now." His father asked, "And what are you going to do now?" The son answered, "I don't know. I can't do anything at all."

Whatever you do, do it well. Be the best of whatever you are.

Let's Contribute

By BILLIE JANE LEWIS

The Panther is a student publication, and this fact alone should inspire every student to do his bit toward its progress. Why won't you contribute? This is your paper; do your part in contributing material for its publication.

Any school spirit or desire to write and keep the staff supplied with original articles shall be highly appreciated. The Panther staff is here to serve you, but it is not to make all the contributions. Do not feel that it should write and submit all the material, for this is your paper.

The same feeling used toward other publications, you also use toward the Panther. You subscribe to and read other people's ideas, opinions, and sayings, but never an idea do you submit. Here is your chance to express your opinions, ideas, and sayings. Take advantage of it; make your contributions. This is your paper to make it what you want it to be.

POETRY

By BILLIE JANE LEWIS

It's Up To Us

It's up to us to lead tomorrow To reach our goal and master sorrow. For we're the background of our race, And there are many problems we must face.

We must do our best in the service of others, And go by the teachings of our mothers.

We are the example for those behind. To fight their way to the goal line.

Come on, youth, let's do our best, In bringing joy and happiness To a people who will give, not take, And quickly profit by another's mistake.

Our constant help is from above, Granted by God to those he loves. He is the beginning and the end; He has been our guide since the world began.

So, wake up, youth, let's really fight For right above all will conquer might.

We can conquer, and we can win, For God is our leader, a man above men.

Yes, youth, we have a part to play, We'll do our bit in every way, With God as our leader, we'll never go astray, For he will be our guide day by day.

Music

Introducing the world of swing Where all is jumping, I mean everything.

There are those sentimental crooners, the Ink Spots. Who give out jive that's really hot.

Take the King Cole Trio that makes you swoon, Makes any gal fall for a tune. There's Count Basie on the piano stool, Giving out with his stirring blues.

Lucky Millinder is strictly fine, He puts all the jitterbugs right on time.

Louis Armstrong, a trumpet he blows, And simply takes away all the shows.

The Brown Dots, dotting around, Carrying their music over town. If it's religion you want, find Sister Rosetta Tharpe And listen to her as things get sharp.

For soul stirring gentle and music that's sweet, Listen to Earl Hines, a man that's all reet.

If you want to be on some time, Listen to Erskine Hawkins; he's strictly divine

Now to blow your troubles to the wind, Call Cab Calloway to say, "Amen".

Now, of course, we have Ellington, the Duke, A man that's really, well, really all root.

Let's stop this jive and educate our feet,

To the rhythm of Louis Jordan, well, all reet.

Buddy Johnson will make you rave And his music forever will you crave.

Jimmie Lunceford, with all his jive,

Will rid a heartache, if it should arrive.

The Mills Brothers croon so as to ease all pain,

They even keep the feet dry from the blinding rain.

Sanders King keeps the heart dry, Makes your soul quiver and you want to cry.

Goodbye for now; the music must stop,

For, after all, the time is on a clock.

Away At College

Away at college and lonesome indeed, Yet, why am I here if not to succeed?

And this I know is just the right place To learn to do more for the human race.

The things that are taught, Can't easily be bought. So it's quite an experience to prepare for life, With all its hardships and bitter strife.

I often welcome the classes each day, For they're slowly but surely preparing my way.

For up ahead I know I'll be proud, That I walked along with an advancing crowd.

If into the future I could see, Some of the things that would happen to me.

I'm sure I'd see heading the list, "A good education is a very good risk".

Looking back but going ahead Life is not all a flower bed. Life we know we cannot bluff, For the road ahead is often rough.

We may take our time and progress slow, And someday soon I'm sure we'll know,

That while we've worked and constantly toiled, The things we've worked for can't easily be foiled.

Support Your Paper THE PANTHER

HONOR ROLL

FIRST SEMESTER, REGULAR SESSION, 1945-46

Table with columns: Name, Grades, Average, Division, Class. Lists names of students and their academic performance.

†Highest ranking students for the semester.

A comedian asked Mark Twain to write five good jokes for him. He offered a fee of fifty dollars but was refused. Twain argued: "It can't be done, for we both would get bad reputations. Any-

body who knows that I have as much as fifty dollars may consider me a thief. You certainly will be called one if you have five good jokes in your act." —Ladies Home Journal, Feb. '46

# The Honorary Society

By MARIE Y. BEVERLY

When the Alpha Pi Mu Honorary Society was organized at Prairie View in 1928-29, the following purposes were set forth:

1. To promote scholarship and scholastic achievement among the students of Prairie View.
2. To develop among students at Prairie View an appreciation for things cultural.
3. To award distinction to those students, who, through persistent, hard work, maintain the highest degree of achievement.

You are wondering how one becomes a member. Well, the Alpha Pi Mu has three ranks of membership: associate, active, and honorary memberships; any freshman or sophomore student who earns a scholastic average of 2.3 is entitled to the rank of associate member. A student acquiring or maintaining a scholastic average of 2.3 in the Junior or Senior year becomes an active member of the Society. Any member of the faculty of Prairie View who has made any worthwhile contribution to the Alpha Pi Mu Honorary Society becomes an honorary member.

Our motto, "The only excellence is that of learning or achieving," guides us in any activity we undertake.

The officers, elected early in October, are Verlie Thomas, president; Ruth Vaughn, vice-president; Marie Beverly, secretary; Ramona Vaughn, assistant secretary; Clifton Vincent, treasurer; Janet Caldwell, business manager. Mr. R. B. Jefferson is the supervisor.

The members are Marie Beverly, Janet Caldwell, Vander Caldwell, Helen Gormany, Leatrice Howard, Helen Johnson, Mittie Kennard, Julia Levy, Kathryn Luckett, Walter McClennan, Virginia McGriff, Doris Jean Peppers, Willie Jean Perry, Orville T. Seaton, Frankie Smith, Verlie Thomas, Ramona Vaughn, Ruth Vaughn, and Clifton Vincent.

The Society will be much larger this semester when more freshmen and sophomores will become associate members. The new members will be initiated about the first of March.

We are looking forward to ending the year's activities with a formal dinner sometime in May. It is our intention to make this dinner an annual affair.

# The Mu Alpha Sigma Honorary Society

The Mu Alpha Sigma Honorary Society was organized in 1935 under the direction of Mr. O. A. Fuller, who was Head of the Music Department at that time. This Society was not active during the past few years, but, in the interest of the students of the Music Department, it was reinstated on December 19, 1945.

The purpose of the Mu Alpha Sigma Honorary Society is to promote scholarship among the students of the Department.

The members of the Society are Misses Janet Caldwell, Mittie Kennard, Verlie Thomas, Kathryn Luckett, and Ellen Woody. Although only five persons were eligible for membership at the time of reinstatement, the membership of the Society is expected to expand greatly during the second semester.

# Miss Peppers

(Continued from Page One)

Excluding the Queen and her escort, there were eight couples on the stage. Lois Johnson, escorted by Charles Downs, wore a blue net dress, ruffled, with sequins and white ballet sandals, gold necklace and earrings, with black accessories. Helen Gormany, escorted by Louis Bedford, was attired in a blue net dress bordered with pink sequins, a gold choker, white ballet sandals, and black accessories. Attended by Charles Lang, Virgin Taylor was dressed in a blue dress with white accessories and a silver sequin cap. Anna A. Bradley, accompanied by Wilbert Newsome, was clothed in a light blue dress with pink accessories. Constance White, escorted by Van T. Graham, was arrayed in a white dress with a full net skirt with a jersey top sprinkled with sequins, long white evening gloves, with one string of pearls around the neck and matching pearl earrings; she also wore silver sandals and a reef of silver sequins around her head. Maxine McGaughey, guided by Nolan H. Lewis, was robed in a blue dress with a full net skirt with a peplum. The bodice of blue satin was covered with a Chinese braid design; she wore, also, pearl necklace and bracelet. Escorted by Talmage Brewer was Merle Frazier, who was adorned in an ice blue frock of net over satin, styled with a drop shoulder effect, the basque with a round neckline, short sleeves, and a swirling skirt. Her accessories were pink. Hortense Williams, Associate Editor of the Panther, was escorted by Calvin Rolark, Business Manager of the Panther. Miss Williams wore a low necked pink net dress with long sleeves and numerous folds in both the blouse and the skirt.

## Whatcha Say! All Out For THE PANTHER

### "MISS PRAIRIE VIEW" CONTESTANTS



Seated is Miss Doris Jean Peppers, Dallas, Texas, who won the coveted title of "Miss Prairie View" in the recent contest. Standing, left to right, are the other contestants: Miss Constance White, Fort Worth, Texas, second place, and Miss Merle Frazier, Woodville, Texas, third place.

# SNOOPIN' SAL

What will the Queen do since the maid left February 1?

Girls, what's the matter with the fellows on the campus. There seemed to have been a lot of imported men down for the Coronation Ball.

Christmastime seemed to have brought about a drastic change among the couples on the campus. I wonder why???

"Every man must have his fling." How about that, Rolark and Seaton?

Who's next on the "Campus Hound's" list? Is it the veterans? Could be.

What happened to the romances of the Black Sisters? GONE WITH THE WIND? 'Bout are.

Lieutenant Arzo Burnim certainly likes his "Play Sisters." How about that, Mary Faye.

The "Drummer Man" surely likes his M. B.'s, especially the first name "Marie." Ha, Ha.

Frank White likes to walk with the Rosemary's.

El Marie McClure is singing, "I'll Live True to You," Quinto.

Ora Mae Stewart, is it Dough-belly or Dan? Is Dorothy to be considered? Or is she?

Bobby, why did you put Clarence down? Is it because of the Captains?

"When the mice are away, the cats will play." They will, won't they, J. W. Anderson.

### NURSES

It seems as though the nurses are a bit on the groovy side, especially since Dorothy B. Devereaux and Rufus Turner are seen together lately. However, the long distance telephone calls are beginning to bring them apart.

Ora Lee Bryant seems to be trying to discourage a fellow here on the campus since she learned that a certain sailor named Henry Starks has been discharged.

Anna Clair, you had better

watch out if you don't want Lt. Alonza Sargent beaten up by a bunch of hoodlums. I overheard a conversation the other day.

Wonder what came over C.P.S.; she dresses up every time she is off duty and goes on the campus. It must be Monroe. Watch out, Cleo!

P.C.B. was trying to smoke the other night because she received a letter saying that Chief Petty Officer Thomas had rejoined the Navy for another two years. Couldn't be that bad, could it, Paul? Now, Ruthie Mae Booker, don't throw F. S., the veteran, too hard. It may hurt him, and, besides, "What you sow, that you shall also reap."

Miss A. Simmons, it seems as if Mr. R. McCain is in love with Miss R. L. Allen; but Miss Allen is devoting all of her time to Mr. M. Frazier.

T. McClure, O. Ozan, and H. Forrow, don't you think all of the fellows know you by now?

C. V. Owens, you have really had your share of the girl friends. Please give the other fellows a break.

A. Pace and A. M. Kelly are really sticking together. We wonder if it will lead to church bells?

A. Nelson, you and M. Thomas really do play the cuts. How long will it last?

Miss D. M. Bryant, we know you will be lost this semester without Miss L. V. Mann.

Young ladies, R. Hudson is all out for L. M. Brown.

C. Rolark, can't you see that you and C. Williams were meant for each other?

K. Luckett, didn't you know that C. Bradford was going back to M. Wrenn?

What happened to the A. Sargent and M. Stockton romance? Also, the G. Maybelle and A. Murphy?

Miss L. Gooden, you and Mr. O. Seaton should stop acting like children.

C. F. Downs and K. Curl, Misses L. Johnson and Lucille Phillips seem to be the ones and only ones at the present time. Will it last this whole semester?

R. M. Phelps, can't you see that D. Johnson is giving M. M. Hall all of his attention? What kind of game are you and V. Taylor trying to play, anyway?

Miss J. D. Hartfield, you seemed to be having a swell time at the Coronation Ball. Who was the lucky guy?

F. McNeil wasn't the least bit bothered about the unsuccessful romance between her and Lt. L. Brown. The joke was really on him.

D. Washington, why don't you give in to D. M. Parker? You know she is the one for you.

B. Myers, you seemed to have captured the heart of the Queen on the campus and another certain senior. Are you carrying a black cat bone?

A. M. Edwards and I. Hill seem to be carrying the torch for the same young man, but we refuse to call his name.

R. Blount, we see you are very happy since your ex-boy friend is back on the campus.

E. Drummer is the big Romeo on the campus. I wonder why he never keeps his Juliet?

L. Vaughn, since you are a whiz at solving everybody else's problems, why not solve the one between A. Bradley and W. Newsome?

# The Annual

(Continued from Page One)

lished. So far, it is accomplishing its aim. In 1943, the number of individual pictures amounted to 700. There will be more than 1000 individual pictures in the 1945-46 annual.

The book this year is costing fifty cents more than it cost in 1943. But look what you get! You get a 9" x 12" annual instead of 8 1/2" x 11", the size of the 1943 annual, with 216 pages of pictures of persons and activities comprising Prairie View's campus. The total cost of the annual is \$4,800.

Fifty copies of the annual are usually sent to accredited high schools in Texas. The same will be done this year.

The Cover: White serves as the background for the large Panther's head found on the front cover. The Panther's head is purple with gold color washed around it. The words "Purple and Gold" of raised letters will also be found across the front of the padded cover.

Dedication: The 1945-46 annual is dedicated to Prairie View University and its progress.

You will find inside the annual scenes of the Homecoming floats, commencement activities, and miscellaneous campus activities.

The cabinet members will appear in a unique manner. They will be seen in front of different buildings to give two pictures: that of the cabinet member and that of the building.

The features will be found in this sequence:

1. Faculty—with information concerning their education and former jobs. (Mr. Charles Montgomery receives the credit for getting this information.)
2. Classes—Graduate Class, Senior Class, Junior Class, Sophomore and Freshman Classes.
3. Athletics with pictures of the football, basketball, tennis, and track teams.
4. Clubs—views of forty-four clubs will be found as compared to twenty-six in the annual of 1943. (Mr. Calvin Rolark is responsible for our getting the support of so many clubs.)
5. Alumni pictures and news will be found on the three following pages.
6. Campus favorites will follow.
7. Thirteen pages of advertisements from companies solicited by Mr. C. L. Wilson.

You will really miss something if you do not purchase your own annual. Mr. R. W. Hilliard is still receiving partial and full payments for the annual.

Come on—own a 1945-46 Panther Annual! It is something to cherish forever.

## Backward Glance

(Continued from Page One)

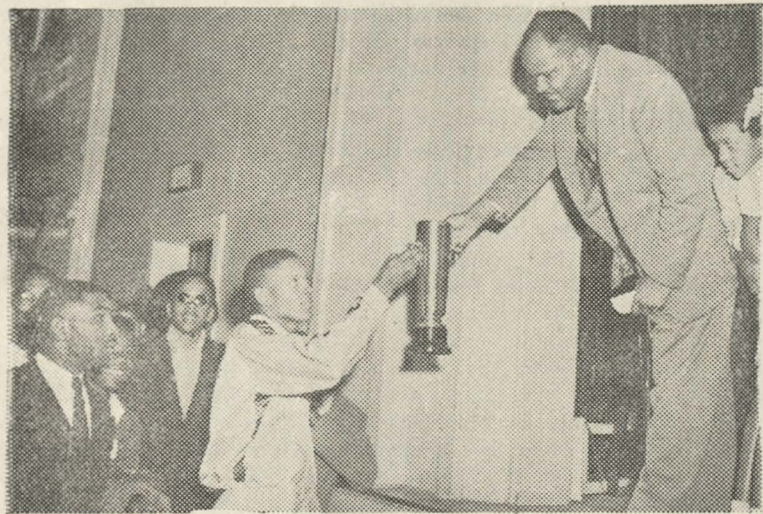
Miss Mable Porter	1936-37
Miss Frances Ellison	1937-38
Miss Madelyn Freeman	1938-39
Miss Jimmie Carothers	1939-40
Miss Ada Louise Evans	1940-41
Miss Martha Estelle	1941-42
Miss Lillie B. Simond	1942-43
Miss Earline Ross	1943-44
Miss Jean Harris	1944-45
Miss Doris Jean Peppers	1945-46

Miss Peppers won over Miss Constance White of Fort Worth, Texas, and Miss Merle Frazier of Woodville, Texas, with \$668.29. The total sum raised by the three, \$1,406.02, ranks fourth when compared with that raised in the thirteen preceding contests. The highest amount ever raised was \$2,100.00 in 1943-44, when Miss Earline Ross reigned with \$1,196.

# S P O R T S

DORTHELLA M. WHITE, Editor

## TENNESSEE STATE WINS CUP



R. W. Hilliard, right, presents the tournament cup to Captain Buie of Tennessee State, winner of the Southwestern Open Basketball Tournament held here January 11-12.

## UNIVERSITY IS HOST TO SOUTHWEST OPEN BASKETBALL TOURNAMENT

Students of Prairie View University had guests from six states at the Southwestern Open Basketball Tournament, January 11-12, of which they were hosts. Teams began arriving late Thursday and continued rolling up Spur 96 throughout Friday.

Five other schools besides Prairie View, plus two Air Fields, represented the Lone Star State in the stiff competition between the southwestern teams. They were Samuel Huston of Austin, Mary Allen of Crockett, Texas College of Tyler, Wiley College of Marshall, Houston College of Houston, Kingsville Navy Air Field of Kingsville, Sheppard Army Air Field of Wichita Falls.

Other states with teams represented were Tennessee by Tennessee State, Arkansas by Arkansas State, Oklahoma by Langston, Alabama by Tuskegee Army Air Field, Florida by Pensacola Navy Air Field, and Louisiana by Southern University at Baton Rouge.

As soon as the doors of the gymnasium were opened Friday morning, hundreds of interested spectators from the entire southwest jammed the building to overflowing so that by nine o'clock, game time, there was standing room only. During both days everyone was held spellbound by the lightning actioned antics of the hardwood hoopsters as their admirable teamwork and machine-like precision provided thrills, chills, and yes, even spills, game after game.

The results and scores were as follows: Tennessee State, Mary Allen; 79-21; Texas College, Lake Charles Air Field by default; Houston College, Wiley College; 46-42; Arkansas State, Southern

## PANTHER LEADERS

Captain of the Pantherettes is Miss Rose Ella Blount, Jasper, Texas, a junior who is majoring in home economics. She was Co-Captain of the undefeated team last year and is leading her team to victory in the 1946 basketball season.

The captainship of the Panthers has changed from Robert "Doughbelly" Phelps, who has

University: 57-39. Friday afternoon, Prairie View lost to Langston University 32-63, Kingsville Navy Air Field to Tuskegee Army Air Field 34-36, and Sheppard Air Field to Samuel Huston, 55-64.

That evening, Tennessee State trounced Texas College 62-27, Langston University topped the fliers from Tuskegee 76-47, and Samuel Huston won by a slim two points over the sailors from Pensacola Navy Air Base, who had drawn a bye before, 62-60.

Saturday morning in the semifinals were Tennessee and Arkansas State who heated the hardwood with forty thrilling minutes of basketball, Tennessee State winning 72-43. Langston University and Samuel Huston played the other game of the morning with Langston leading as the final whistle blew 71-33. At five that afternoon, Arkansas State and Samuel Huston played for third place, with Samuel Huston winning 52-44.

At 6:15 p.m., the most exciting game of the Tournament began when Langston University and Tennessee State continuously thrilled the crowd as they played a hard, fast-moving game, which would decide who was to hold the Southwestern Open Basketball Tournament championship. Every minute of the action-packed game kept the spectators tense with excitement as they watched Tennessee State win its fourth consecutive victory, 72-59, and become the champions.

After the game, players, visitors, and Prairie View students relaxed by tripping the light fantastic to tunes played by the Prairie View Co-eds and Collegians under the baton of Mr. Will Henry Bennett.

gone home to see Uncle Sam about a job, to Fred "The Holy One" Watson. Fred, who is our outstanding male athlete for this issue, is a junior majoring in agriculture.

Several new players have been added to the Panthers, some of whom are J. Bradley, R. Scott, E. Johnson (former Coast Guardsman), and E. Evans.

## OUTSTANDING ATHLETES

### WOMAN

PANSEY JUANITA JONES is a graduate of Dunbar High School, Lufkin, Texas, and was an outstanding athlete even in high school.

Pansey has won a tennis championship and honors in other sports; she has also played forward on the varsity team for two years. Majoring in biology, she is a sophomore here. Holding that she hates nothing, she loves chicken, pie, and basketball.

### MAN

Fred "Big Wat" Watson, a product of Prairie View, is our choice for this issue's most outstanding male athlete. He loves and likes to participate in sports and games of all kinds. He began starring in basketball in elementary school, in tennis and softball in high school, and in football in college, where he was one of the "Holy Three" on the Prairie View Panthers, playing center.

If you should visit Fred, who lives on the campus with his father and brother, you would find several athletic jackets and sweaters in his closet and the walls lined with letters and other awards. He has, also, a cup which he won in the Men's Doubles with his uncle, Mr. D. Tamplin. He despises nothing and is said to be crazy about everything, especially football, food, and women. Watson is a junior, majoring in agriculture, and picks Berdine Reese and Osby Mitchell as the best all-around athletes at Prairie View.

## P. V. Mentor Banquet Speaker At Bryan

Coach Billy Nicks, Head Coach and Director of Physical Education at Prairie View University, was the main speaker at the annual football banquet held at Kemp High School, Bryan, Texas, Jan. 31, 1946. Coach Nicks spoke on "Educational Value of Athletics". He stressed the importance of playing the game hard at all times and being a good loser as well as a good winner. Sixteen athletes received the prized varsity sweater. Coach Scurry of Kemp High was praised for the fine work done with the team

## Activities of the Mechanic Arts Division

By EVA MAE MIMS

One of the most active and industrious Divisions of Prairie View University is the Mechanic Arts Division, under the direction of Mr. C. L. Wilson.

The enrollment for the first semester consisted of forty-two veterans, 159 Mechanic Arts students, and approximately 500 industry students.

The Mechanic Arts Division participated in the Homecoming parade, and its float won second place. The Standard is printed by this Division, as are the Panther

## BASKETBALL SCHEDULE

Date	Opponent	Where Played
17	Tillotson—Boys and Girls	Tillotson
28	Houston College—Boys and Girls	Houston
FEBRUARY		
4	Mary Allen College—Boys and Girls	Crockett
8	Tillotson—Boys and Girls	Prairie View
11	Sam Huston—Boys	Prairie View
12	Sam Huston—Boys	Prairie View
18	Mary Allen College—Boys and Girls	Prairie View
21	Wiley College—Boys and Girls	Prairie View
22-23	Holiday and State Contest	
	AA Basketball Tournament	Prairie View
25	Louisiana Normal—Boys and Girls	Grambling, La.
26	Louisiana Normal—Boys and Girls	Grambling, La.
27	Arkansas State—Boys and Girls	Pine Bluff, Ark.
28	Arkansas State—Boys and Girls	Pine Bluff, Ark.
MARCH		
11	Texas College—Boys	Tyler
12	Texas College—Boys	Tyler
13	Wiley College—Boys	Marshall
15-16	Conference Basketball Tournament for Boys	Pine Bluff, Ark.
APRIL		
5-6	Prairie View Relays	Prairie View
19-20	Track and Field Events at Wiley College	Marshall
MAY		
17	Conference Track and Field Events at Southern University	Baton Rouge, La.

## Other Athletic Events

## GAMES AT A GLANCE

### Tillotson Trounced

The Pantherettes trampled the Tillotson girls basketball team to win triumphantly 38-21. This was the first game for the hardwood hoopsters, and it opened the basketball season for 1946. Playing forward for Prairie View were Helen "Sure Shot" Davis, Pansey Juanita Jones, Ila C. Buford, and Willie V. Woods; while on the defensive were Rose Ella Blount, Captain of the Pantherettes; Marjorie Lee "Skip" Thomas, Rose Marie Griffin, Viola Knight, and Dorothy Brailsford, all of whom were stars on the varsity team last year.

The boys basketball team lost to Tillotson 38-37. This aggregation consists of: forwards, Ollie R. Williams, Elmer Redd; center, Burton Snead; and guards, Fred Watson and James Bradley.

### Houston Humbled

The Phillis Wheatley gymnasium was the scene of much excitement when our girls overran the feminine Cagers from Houston College in the Pantherettes' second game of the season. The Houston College team was definitely outplayed by our girls, who won a decisive victory, 37-4. Those playing were Helen Davis, Pansey Jones, "Skip" Thomas, Dorothy Brailsford, Rose Ella Blount, Ila C. Buford, Rose Marie Griffin, Berdine Lea Edmundson, and Viola Knight.

The Prairie View Panthers lost to Houston College Cagers, 59-46. The following boys played: Watson, Williams, Phelps, Parrish, and Redd.

and the Craftsman at regular intervals.

On January 15, seventeen additional veterans enrolled in the Division.

### Mary Allen Massacred

Up to Crockett this time, the unbeaten Pantherettes treaked to whip the Mary Allen College girls on their own hardwood and add their name to the growing list of defeated opponents. Pansey Jones starred in the hard, fast game, making 21 of the 35 points. The final score of 35 to 11 was, as usual, in favor of the Pantherettes. Players included Davis, Jones, Thomas, Buford, Blount, Griffin, Brailsford, Knight, and Edmundson. Coach Jacqueline Brown is a former basketball star of Tuskegee Institute, Alabama.

The Panthers lost 28-19 to Mary Allen. Here the players included Watson, Reaves, Scott, Bradley, Ross, Mitchell, Snead, Williams, and Redd. Bennie Landers is the manager

### Prairie View Wins

The Prairie View cagers tangled with the St. Peter Claver Independent team in San Antonio, January 5, 1946. Excellent sportsmanship, rapid thinking, and well co-ordinated playing kept every player on the alert all during the game, which thrilled the spectators who filled the St. Peter gymnasium.

Trailing in the first half, the Panthers were sparked into action by Captain Fred Watson so that when the half ended, the Panthers were leading 32-29. Continuing their At-tack in the second half, Ollie Williams, high point man, kept the Panthers well in the lead, ending the game 82-71. The perfect teamwork of Elmer Redd, B. Snead, J. Bradley, R. Scott, E. Evans, and E. Johnson led us to victory.

The Mechanic Arts Division has begun to make plans for Open House, which is scheduled for April 24.