

Prairie View A&M University

Digital Commons @PVAMU

PV Panther Newspapers

Publications

7-12-1968

Panther - July 1968- Vol. XLII No. 18

Prairie View A&M College

Follow this and additional works at: <https://digitalcommons.pvamu.edu/pv-panther-newspapers>

Recommended Citation

Prairie View A&M College. (1968). Panther - July 1968- Vol. XLII No. 18., *Vol. XLII No. 18* Retrieved from <https://digitalcommons.pvamu.edu/pv-panther-newspapers/652>

This Book is brought to you for free and open access by the Publications at Digital Commons @PVAMU. It has been accepted for inclusion in PV Panther Newspapers by an authorized administrator of Digital Commons @PVAMU. For more information, please contact hvkoshy@pvamu.edu.

Citizens' Study To Set PV Goals For 1968

A citizens' study to define the role and scope of Prairie View A&M College during the next 10 years has been authorized by the Texas A&M University System Board of Directors.

The study, which also will include a close look at the present status of the predominately Negro institution, will establish guidelines for goals for 1978, the college's centennial.

Board members decided the study, requested by Dr. A. I. Thomas, Prairie View president, will be made by a committee of 50 to 75 prominent Negro and white citizens from throughout Texas and the nation.

Committee members will be chosen from a cross-section of professions, ranging from science and engineering to labor, the humanities and arts, agriculture, government, military and religion.

Members of the committee will be named at the board's August meeting.

Dr. Thomas said nominations will be made by Prairie View A&M students, faculty-staff and alumni, system officials, and any citizens from throughout the state who desire to make recommendations.

Board plan calls for the citizens' study to begin with a kick-

off conference in October and be completed by June, 1969, with a final report in October.

"In authorizing a citizens' study," noted Dr. Thomas, "the board has taken one of the most significant steps forward in the history of the college."

"It's quite crucial at this time," he continued, "that such a study be made, in terms of trying to clarify specifically the role of Prairie View A&M in the next decade."

Dr. Thomas said the study will give both the board and the administration a clear commitment from the public regarding the type and quality of institu-

tion which Prairie View should be.

"Prairie View is on the threshold of becoming a college of excellence," he observed. "This study will give the institution a well defined and well supported plan to achieve true excellence."

The Prairie View president noted the study will be similar to one conducted for Texas A&M University in 1962. That study, made by a citizens' group called the Century Council, established guidelines to carry the university through its 1976 centennial.

Dr. Thomas praised the board and Texas A&M University Sys-

tem President Earl Rudder for "the leadership they are giving to the development of Prairie View A&M."

Rudder said the citizens study will be "master plan or blueprint for the future and is essential to Prairie View's orderly growth and development."

He said the Century Council study at Texas A&M has proved to be invaluable and expressed confidence the Prairie View study will be equally rewarding.

A staff with a full-time director will be formed to handle administrative details for the citizens study committee, the PV president said.



PV CADETS MEET GOVERNOR ROCKEFELLER OF NEW YORK — Students in the NROTC Summer Institute met the NY Governor at the HemisFair during a recent trip by the group to San Antonio.

Opening Convocation Sept. 8 —

Plans Set For Freshman Orientation on Sept. 9-14

The 1968-69 school year will get underway officially on Sunday, September 8 with an Opening Convocation for Parents is scheduled.

Freshman Orientation will begin on September 9 and continue through September 14. Registration for upper classes is set for September 15-17.

Faculty members will start their year a bit earlier as they come in for the annual Faculty

PV Grads Accepted In Medical and Dental Schools

Several graduates of the Division of Natural Sciences received appointments to Dental and Medical Schools. The list includes: Janice Criner, Meharry Medical School; Albert Lester, Wayne Medical School; Isaac Osborne, Howard Dental School; and Ernest Mayfield, University of Texas Dental School.

Faculty Member Gets Travel Grant

The travel Grant Committee of the Western Hemisphere Nutrition Congress has awarded a travel grant to Dr. R. W. Lewis for the purpose of participating in the Western Hemisphere Nutrition Congress II to be held on August 25-29, 1968 in San Juan, Puerto Rico.

Conference on September 5-6. Classes will begin on September 18.

Science Professor Is A Consultant In India

Dr. Jewel E. Berry, Professor of Biology is serving as a consultant to an institute for high school teachers at New Delhi, India. Dr. Berry received the Ph. D. Degree from Notre Dame and has been a biology staff member for several years.

PANTHER

Student Publication, Prairie View A&M College of Texas

VOLUME XLII, No. 18

Prairie View, Texas

JULY 12, 1968

At June Meeting —

Directors Act On Several PV Construction Projets

Award of a \$69,040 contract for renovation of Prairie View A&M College's library and Student Aids and School of Nursing Buildings was approved Tuesday by the Texas A&M University System Board of Directors.

The contract went to Homer F. Weaver of Houston, low bidder for the project.

Appropriations totaling \$58,000 for four previously announced construction projects also were approved.

The board allotted \$30,000 for preliminary design of two new 750-bed dormitories which are expected to cost approximately \$5 million.

A \$16,000 appropriation was authorized for renovation and replacement of furniture in the college's Memorial Student Center.

The two remaining appropriations were supplemental allotments for street and parking improvements on campus and preliminary design of a new dining hall. The street and parking project drew an additional

\$4,500 and the dining hall, \$7,500.

Board members also approved three requests for newly authorized faculty development leaves.

James S. Payne, assistant professor of history, was granted a 12-month leave to study for a Ph. D. in history at Indiana University.

A nine-month leave was awarded Clyde Christopher to work toward a Ph. D. in computer science at Texas A&M and Joseph Berta, music instructor, was granted a one and one-half month leave to study with the American Community Symphony Orchestra in Europe.

The board formally accepted gifts and grants for Prairie View totaling \$11,000. Hohlitzelle Foundation provided \$5,000 for the College Development Fund, while the Sears-Roebuck Foundation awarded \$2,500 to the Youth Leadership Institute and the Bendix Corp. allotted \$1,500 to the Electrical Engineering Department.

Summer Session Enrollment Up Over Last Year

Enrollment for the first term of the Summer Session has been reported to be well over 2000, representing an increase over the 1884 enrolled the same period last summer.

Increases in enrollment over the summer has been limited due to the lack of student housing. Three major residence halls have been closed for renovation which reduced living accommodations considerably.

Fall Enrollment Expected To Increase

Projected enrollment of the Fall Semester is approximately 4,650.

In projecting enrollment figures for the future, college officials have estimated a student population of around 5000 by 1975 and 5,600 by 1980. The project in for 1980 takes into account a proposed limitation of enrollment in the senior college of Texas. However the figure represents the college's own projection based on the selective admission in keeping with the presidential college philosophy.

Desegregation Workshop To Begin Monday

A total of 60 teachers and administrators will participate in a 3 week workshop on problems of desegregation beginning Monday, July 15. Participants will include school personnel from six school districts — Brenham, Hempstead, Magnolia, Navasota, Royal, and Waller.

The project, to be directed by Prof. C. A. Thomas, is sponsored by the college, with the aid of a federal grant.

Pre-Registration Active For 2nd 6-Weeks Term

A fairly large number of students have secured permits to register and paid fees for the second six weeks term which begins Monday, July 15.

Registration for the period is set for Monday, and classes will begin Tuesday, July 16.



SUMMER CONVOCATION — Platform guests included the principal speaker, Dr. Bevington Reed, representing the Coordinating Board for Higher Education in Texas (center) and PV student leaders and administrators — (L to R) Reynaldo Priddy, Dr. J. L. Brown, Dean C. L. Wilson, Miss Janice Criner, President A. I. Thomas and Reverend W. Van Johnson.

Mathematics Department Receives NSF Summer Institute Grant

The Mathematics Department received a grant of \$21,000.00 to operate a Summer Mathematics Institute for Teachers of Secondary Mathematics. About thirty (30) enthusiastic Secondary Teachers of Mathematics are studying Elementary Analysis, Introduction to Linear Algebra and Matrices and Probability and Statistics in the six week Institute. Participants of the Institute represent several states.

The Objectives of the Institute are:

- a) to improve the preparation of the secondary teachers of mathematics by increasing their knowledge and comprehension of basic ideas and concepts in mathematics.
- b) to develop such interest and enthusiasm among the participants that they will in turn motivate and encourage anxious students to enter mathematics as a chosen field, and
- c) to provide an opportunity

for teachers with similar and varied experiences to discuss and find solutions to problems encountered in their school situations by meeting (1) among themselves (2) with staff members and (3) with guest lecturers.

The Institute calls for several interesting recreational activities. Some are: tours, picnics, parties, etc. The culminating activities include the Institute Banquet and the Awarding of Certificates. The Institute ends July 26, 1968.

Workshop for High School Students Council Set

The Lone Star-State Ass'n. of Students Councils will hold its annual workshop at Prairie View on July 28 through August 1.

Approximately 50 or more representatives from high school student council groups over the state are expected to attend.

Secondary Science Teachers Attend NSF Institute

The Division of Natural Sciences is holding its Ninth Summer Institute for Secondary Science Teachers. The institute is sponsored jointly by Prairie View A&M College and the National Science Foundation of Washington, D. C. Participating in this summer's program are 40 teachers from Texas, Minnesota, Missouri, Louisiana, New Mexico, California and Illinois.

Chemistry; Mr. R. E. Gibson, Earth Science; Dr. P. L. Young, Biology; Dr. R. G. Thomas, Physics; Dr. L. C. Collins, Biology. The program Director is Dr. E. E. O'Banion.

Cheerleaders Clinic To Start Sunday

The twelfth annual clinic for baton twirlers, cheerleaders, majorettes, and sponsors, will be held on July 14 through 19th. An outstanding faculty, large student enrollment, and adequate recreation are features of the 6 day clinic. This program is sponsored by the department of extra-mural services and health and physical education.

Home Economics Workshop Set

The School of Home Economics will sponsor a 3 weeks workshop for teachers beginning July 15. The workshop theme is "Current Development and Trend in Teaching Construction."



Members of the NSF Summer Institute for Talented High School Students.

Chemistry Department Holds 10th Summer Science Program For Talented High School Students

The Department of Chemistry was selected again by the National Science Foundation to offer its 10th program for high school students. Since the program began in 1959, it has gained national recognition and has received applications from high school students from every state in the United States and from several foreign countries. At the termination of this summer's program 250 students will have participated in the program. These students have come from Texas, Louisiana, Idaho, Arkansas, Indiana, New Jersey, Georgia, North Carolina, Oregon, Nebraska, Washington, Minnesota, California, Arizona, Kentucky and Florida. Many of the former participants have finished college and have gone on to graduate or professional schools. One participant was a finalist in the National Science Fair. His science project was initiated during his attendance in this program.

The students are selected upon a competitive basis. The program is for six weeks and consists of special topics in chemistry with special lectures by outstanding scientists and a field trip to industrial areas.

This summer, twenty-four students mark a decade for Prairie View's participation in the National Science Foundation enrichment program. The majority of the participants are from the state of Texas. Five are from out-of-state representing Kentucky, Florida, Indiana, Minnesota and Nevada.

The director of the program is Dr. E. E. O'Banion and the Co-director is Mr. W. E. Reid. The entire staff of the National Science Division serve as consultants and research advisors to the participants during some phase of the program. A major part of the program is devoted to original research by each student in serving as a junior member of a research team. During

the final week, reports of their results are given in Seminars of the Annual E. E. O'Banion Symposium.

This summer's program will terminate on July 19th with a Farewell Banquet and a Mock Commencement Exercise. Each participant will receive a Certificate of Attendance from the director.

Second Semester Honor Roll Lists Total of 241 Students

Five Students Make Straight A's

Five Prairie View students earned straight A records during the second semester, leaving a total of 241 listed on the second semester honor roll.

David L. Brewer, Joan Daniels (Milford), James E. Laymond (Houston), Edward Livingston (Prairie View), and Joyce A. Traylor (Liberty) earned quality point ratio of 4.0.

Twenty-three others attained quality point ratio of 3.0 and above (Summa Cum Laude). They were: Ivy Anderson, Johnnie Ruth Banks, Joe D. Beasley, Ronald S. Briggs, Shirley D. Bryant, Kenneth Carl Hinson, Ella Louise Jenkins, Mary Lalita Johnson, Danny Roy Kelley, Jacqueline Kennedy, Paul Ester Madison, Sandra B. McDonald, George Henry Criner, Janice Marie Shan, Gloria Ann Mosby, Larry

A. Partee, Doris Nell Price, Arvin S. L. Roberson, Sandra A. Roberson, Paul Edward Smith, Ruby Echols Thomas, Carolyn Turner, Genevieve Ware, and Gwendolyn L. Wooten.

MAGNA CUM LAUDE — Those having attained a quality point ratio of 3.5 to 3.5:

Allen, Verna Lynn Arredono, Richard Bacon, Norma Jean Barlow, Woodrow Jr. Bean, Richard Clayton Bedford, Alfred Ray Branch, Jo Ann Bridges, Sandra Kaye Brooks, Clarence J. Brown, Otto Burks, Bessie Adams Burton, Edwin Ross Byrd, Clara Stone Coleman, Julia N. Combs, Osie V. Jr. Cowins, Rosia Lee Criner, Janice Marie Shan, Gloria Ann Mosby, Larry

See HONOR ROLL, Page 5

Texas Teacher Corps Enter Third Cycle Program

After two successful years, Prairie View Agricultural and Mechanical College Teacher Corps is initiating its Third Cycle Program September 9, 1968. The air of the Corps is to train promising college graduates in special methods in reaching and teaching disadvantaged children. All applicants with bachelor's degrees in any area will be considered regardless of race, religion, sex or national origin. The Teacher Corps program is a two year program that will result in certification for the interns plus a Master of Education degree. Corpsmembers will receive year-round financial support.

During the past two years the Teacher Corps has worked with great success within a one-hundred mile radius of Prairie View Agricultural and Mechanical College in Texas school districts and communities.

Applications for the Third Cycle Program should be made immediately to the Director, Teacher Corps, Box 100, Prairie View, Texas 77445.

Dr. O'Banion Attends NSF Briefing Session

Dr. E. E. O'Banion, Head Division of Natural Sciences, attended a briefing session for National Science Foundation Institute Directors at the University of Colorado.

Featured at the session was a field trip in the Rocky Mountains. Attending the meeting were directors from 50 colleges and universities throughout the nation.



JOIN THE TEACHER CORPS Earn A Master's Degree While Receiving Year-Round Financial Assistance.

APPLY IMMEDIATELY TO:

DIRECTOR, TEACHER CORPS

Drawer T, Prairie View, Texas 77445
(713) UL 7-3311 Ext. 368

OPEN FOR BUSINESS

Coin Operated

Dry Cleaning Machines and Hair Dryers

SERVE YOURSELF

in the Block with The Post Office

We Will Be Glad to Assist You

PEOPLE'S CLEANERS

Hempstead, Texas



Project In Home Economics

Bendix Gives Engineering Grant

The Bendix Corporation, Kansas City Division recently visited Prairie View A&M College and was engaged in conference with the President, Dr. Alvin I. Thomas, and representatives of the School of Engineering relative to the development of closer working relationships between the school of Engineering and the Bendix Corporation. Bendix presently employs members of

the Engineering faculty and students in summer situations and has on its technical staff twenty engineering graduates from Prairie View A&M College.

The highlight of this conference was the presentations of a substantial gift to the Engineering Development Fund from the Bendix Corporation. Pictured above are the participants in this conference: Mr. J. R. Phil-

lips, Head of Mechanical Engineering, Mr. D. H. Carlson, Assistant Director of Engineering, Bendix Corporation, Mr. A. E. Greaux, Assistant Dean of Engineering, Dr. Alvin I. Thomas, President, Prairie View A&M College, Mr. R. E. Cox, Supervisor Professional Placement, The Bendix Corporation and Dean C. L. Wilson, P. E. Dean of the College.

Dr. Byrd Serves Disadvantaged Families In NYC

Five cities which were seared by riots in recent years are subjects of special research projects on disadvantaged families under \$1,000 grants of the American Home Economics Foundation.

Dr. Flossie M. Byrd, dean of the School of Home Economics at Prairie View A&M has returned to the campus recently following a period of service in New York City, one of the five cities in the project.

The summer fellowships to five top administrators in home economics to permit intensive one-month experience in inner-city settings were announced by the Foundation's Board of trustees Chairman, Dr. Louise Gentry of Pennsylvania State Uni-



versity, University Park. She said the grants would permit leaders who are responsible for program and curriculum development to gain first-hand experience in the problems and needs of urban families.

The cities in the program are Chicago, Detroit, Los Angeles, New York and Washington.

"Findings of the McGrath Report (The Changing Mission of Home Economics, Teachers College Press, June 1968) show the need for more home economists to bring the benefits of the profession's family service approach to city families in the

PV Graduates Receive MD Degree

Two former graduates received the M. D. at Meharry Medical College. They were Alfred Poindexter, the son of Dr. and Mrs. Alfred N. Poindexter, and General Hilliard. General Hilliard finished as the top student in his class in Medical School and was President. He is a former resident of Hempstead, Texas.

Dallas Pierre, another Prairie View graduate received the DDS Degree from the University of Texas Dental School in Houston.

Faculty Appointments Made by Pres. Thomas

Three new appointments were announced recently by President Thomas. They are —

— Dr. Ivory Nelson, Assistant to the Dean of the College. Dr. Nelson is a graduate of Grambling College and holds the Master's and Doctorate degrees in Chemistry from Kansas University. He is housed temporarily in the Engineering Building and is currently engaged in cost studies and space utilization. His work will also involve institutional research, including the gathering of data for the Dean of Instruction.

— Dr. Robert C. Hughley, returning to the college staff following a two-year absence serving as Program Director, Southwest Educational Development Laboratory. He is presently engaged in Curriculum studies for the President of the College.

— Dr. Jack Echols, returning from a two-year leave during which time he served as an Educational Consultant with the Agency for International Development (A. I. D.) in South Vietnam. Dr. Echols is presently engaged in a comparative study of graduate offerings and program.

COMPLIMENTS of



OFFICES THROUGHOUT TEXAS



Blue Bell Creameries

For Courteous Service and Bargains Galore

FOWLER'S SUPER MARKET

GROCERIES

QUALITY MEATS

FRESH VEGETABLES

HEMPSTEAD, TEXAS

Telephone VA 6-2436

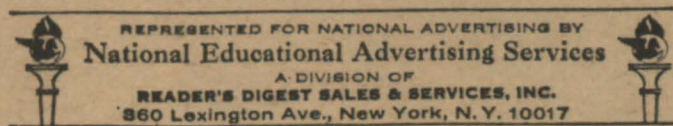
YOUR BUSINESS IS APPRECIATED

Participants In The 1968 Science Institute, Prairie View, A&M College



THE PRAIRIE VIEW PANTHER

Published Semi-Monthly in the Interest of a Greater Prairie View A. and M. College. The PANTHER serves as the voice of the Students of Pantherland.



Opinions expressed in The PANTHER are those of the Editors or of the writer of the article and not necessarily those of the College.

Any news items, advertising, or matters of interest to THE PANTHER may be presented to the Department of Student Publications, Room B-6 Administration, Ext. 301.

One Enchanted Evening

By George Edwards
One warm and starry summer night in the community where I was born, as the smoke from a five-gallon can placed beside us to keep the mosquitos away...

Martin Luther King, Jr., Fellowships

Information For Candidates

Information for Candidates
PURPOSE: To enable Negro veterans of outstanding promise to pursue graduate or professional school training for careers of service to the nation...

Upward Bound: A Road To College

By Phillip Buche

Two years ago, a program called Upward Bound was organized at Prairie View A&M College. What is Upward Bound? It is a government program founded to give aid to high school students who wish to attend college...

For the past two years, the Prairie View A&M Upward Bound Project has been helping students from surrounding counties go and preserve and prepare to go to college. But the program might not have been formed had it not been for the Prairie View College Administration in cooperation with Washington D. C. agreed to sponsor it.

APPLICATION PROCEDURE: Candidates interested in being considered for an award should file an application...

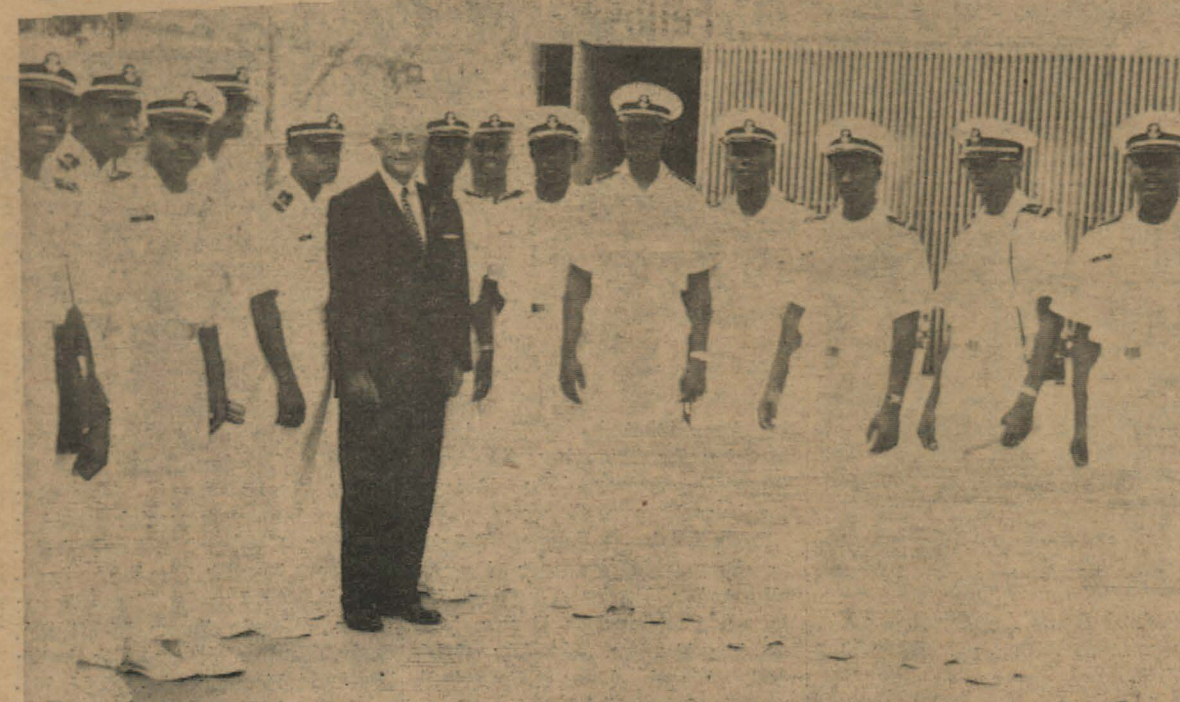
WARD'S PHARMACY
YOUR RX ALL STORE
WALLER COUNTY'S MOST PROGRESSIVE AND MOST MODERN DRUG STORE

Telephone VA 6-2445 HEMPSTEAD, TEXAS

HEMPSTEAD WASHATERIA
24 HOUR SELF SERVICE
Top Loading Speed Queen and Philco-Bendix Machines

HEMPSTEAD ABSTRACT COMPANY
H. D. VOORHEES, PRESIDENT
AGENT FOR - STEWART TITLE GUARANTY COMPANY

B. Schwarz & Son
96 Years of Continuous Service
COMPLETE DEPARTMENT STORE and FURNITURE STORE



NAVY STUDENTS AT HEMISFAIR - Participants in the Summer Institute sponsored by the NROTC are pictured above with an official of HemisFair during the group's visit to San Antonio recently.

Naval Science Institute Begins At PV

On July 15, 1968, 24 NROTC candidates will begin a rigorous 6-week Naval Science Institute at Prairie View A&M College. During the 6 concentrated weeks of the Institute, these young men will study Naval History, Naval Orientation and be introduced to Naval Weapons...

Army ROTC Cadets Attend Summer Camp

Twenty-six cadets from the Army ROTC at Prairie View A&M are attending standing tough inspections, undergoing rigorous physical training and attending classes in weapons familiarization.



READY, AIM, FIRE! Cadet Jesse L. Watson III of Gladewater, Texas, gets some experience with an M-60 machinegun as a part of his Army ROTC summer camp training at Fort Sill, Oklahoma.

Second Semester Honor Roll

CONTINUED from Page 2

- Ealy, James Edward
Evans, Carol A.
Faber, Anita Jewel
Fletcher, Eddie Lee
Ford, Hollie Faye
Freeman, Linda Sue
Glover, Jimmie T.
Hall, Barbara Ann
Hall, Ethel Faye
Henderson, John W.
Henson, Billie Jean
Howard, Barbara A.
Jackson, William H., Jr.
Johnson, Jacquelyn R.
Jones, Jackie Lee
Lester, Dempene L.
Lloyd, June
Manning, Christine
Marshall, Hattie V.
Matlock, Robert James
Mayfield, Clayton E.
McBride, Cecella Ann
McGee, Marjorie Jane
McGuire, Jeanette
McLin, James E.
McMillan, Geraldine
Mosby, Naomi Dolores
Mosley, Robert Earl
Palmer, Mary Ann
Palmer, Shirley Ann
Pegues, Thadis Carver
Ray, Connie J.
Russell, Kenneth S.
Shivers, Hilda Ann
Simon, Deidre L.
Soto, Hilda Alicia
Thomas, Carolyn Faye
Thomas, Shirley Marie
Tibbs, Sandra Jean
Tippens, Ernestine
Wallace, Samuel
Williams, Elynta J.
Williams, Frances M.
Wilson, Curtis
Woodard, Jeremiah
Woods, Jo Ann

S&N Super Market
WALLER
MEATS - GROCERIES
APPLIANCES - Sales and Service

COTNER INSURANCE AGENCY
and
WALLER COUNTY TITLES, INC.
ALL TYPES OF GENERAL INSURANCE and TITLE INSURANCE
We have the answer to all your insurance needs!
Mrs. M. Corner Garrett, Owner

NEWCOMB'S FURNITURE
Hempstead, Texas VA 6-2292
Authorized Dealer of Norge, GE, Zenith, Maytag Appliances
EVERYTHING FOR THE HOME

McWilliams Florist
FREE DELIVERY
Floral Arrangements and Special Decorations
Corsages
VA 6-2421 Hempstead, Texas

WINKELMAN'S LAUNDROMAT
FRONT LOADING and TOP LOADING WASHERS
Large and Small
8 LARGE DRYERS
VA 6-8115 Hempstead, Texas

LEWIS' WATER METER REPAIR SERVICE
ALL METERS CHEMICALLY CLEANED
WORK GUARANTEED
P. O. Box 2212 Phone: UL 7-3537
Prairie View, Texas 77445

Directory of Graduates

May, 1968

Adams, LaBarbara; Alford, Samuel Nell; Andrews, Sandra Sue; Anglin, Jacqueline B.; Armstrong, Mae Helen; Arriola, Mario; Ashton, Patricia Ann; Ates, Jewell; Augustine, Alma Gloria; Bacy, Lelia Ann; Balenger, Haywood L.; Barnes, Ernest; Barrett, Dennis R.; Batie, Joan D.; Beatty, Robert L.; Beck, Alice Faye; Blocker, Martha Ann; Blut, Lois; Bouchum, Dorothy J.; Brantley, Jo Ann; Braswell, James W.; Brown, Carolyn; Brown, George; Brown, Marv; Brown, Patricia; Burks, Charles A.; Burns, Charles H.; Burrs, Velma F.; Burton, Ola V.; Caldwell, Vacal Dee; Campbell, James; Carr, Shirley S.; Carv, Jo Ana; Clark, Easter Bell; Clark, Leslee F.; Clay, Erma Jean; Cleveland, Joanne; Coleman, Shirley; Collins, Paul W.; Collins, Ella E.; Cone, Susie Mae; Cooper, Maggie N.; Cormier, Minnie; Cormier, Ralph A.; Cotton, Robbie D.; Crawford, Betty J.; Cummings, Eleanor J.; Dale, Helen; Davenport, Garland R.; Davis, Amy; Davis, Geraldine; Deason, Joe M.; Dennis, Patricia A.; de Rivera, Robert L.; Dickson, Joseph D.; Duhart, Harry J.; Durham, Lee Otis; Easton, Wilmer C.; Eaton, Larry; Echols, William A.; Eden, Eden A.; Edwards, Carolyn R.; Elder, Betty; Ellis, George E.; Elmore, John A.; Emanuel, Shirley A.; Ervin, Velma J.; Fance, Rufus L.; Farmer, Alexander; Fenner, Gerald; Fletcher, Annie P.; Fountain, Juanitia H.; Frazier, Sadie Mae; Fry, Rosie Mae; Fryer, Bobbie Jean; Gamble, Clarissa; Garrett, Clemogene; Garrett, Judy Ann; Gerald, Valerie; Gibson, Edwin; Gist, Arthur; Goiden, Joyce L.; Graham, Howard; Gray, Leo E.; Gregory, Oneil; Grove, Kay M.; Hackney, Sallie; Hadnot, Mary Ann; Haggerty, Ruth E.; Hall, Thelma L.; Hancock, Chesten; Harris, Dolores; Hartwell, Jo Ann; Harvey, Frank L.; Hawkins, Carol C.; Hawkins, Eddie; Hayes, Jerrilyn A.; Henderson, Robert E.; Henry, Ferdinand; Henry, Joyce A.; Hill, Sonya; Holliday, Hexser; Holloway, Charles; Holmes, Ruby; Holt, Elvin; Hooper, Essie L.; Houston, Kenneth; Hunt, Huey J.; Hunter, Mary; Hutchins, Eddie C.; Jacket, Barbara J.; Jackson, James E.; Jackson, Patsy; Jackson, Samuel; Jacques, William B.; Jefferson, Dora Ann; Jefferson, Jerry L.; Jefferson, Waverly; Johnson, Carolyn; Johnson, Credalla; Johnson, Gloria D.; Johnson, Iva N.; Johnson, LaFaye F.; Johnson, Mae Ester; Johnson, Melvin; Johnson, Mildred; Johnson, Rachel; Johnson, Robby; Johnson, Thomas; Jolley, Venola; Jones, Arealia; Jones, Burton; Jones, Florence; Jones, Lloyd A.; Jones, Nobelton; Kennedy, Lee V.; King, Carolyn Ann; King, Marlene D.; King, Marv Eleanor; Kinnard, Ronald A.; Knoght, Elmer Jr.; Law, Alfreda; Leath, Andrea Faye; Leavell, Carolyn Dian; Levine, Betty Jean; Lewis, Verneda; Livingston, Gwendolyn P.; Lockett, Gladys M.; Lone, Martha Lee; Loudd, Gloria V.; Lowery, R. C.; Lundy, Erma Jean; Lynn, Wanda Jean; McMilliam, Judy Gayle; Martin, Elizabeth; Matlock, Rosie L.; Mayfield, Ernest G.; Millett, Linda Fave; Mock, Margaret Ann; Moore, Brenda J.; Moore, Jane H.; Moore, Muriel; Morgan, Glenda Faye; Morgan, Linda Mae; Mosely, LaVerne; Nathan, Florence; Nelson, Louis J.; Olson, Darrel; Owens, Margaret Ann; Ozan, Lucille T.; Palmer, Bernice H.; Palmer, Edna T.; Payne, Elton C.; Pegasus, Willie Mae; Pelton, Lonnie Ray; Perkins, Haywood J.; Petit, Catherine H.; Petry, Fenton J.; Phillips, Barbara D.; Pierre, Monroe T.; Pinkard, Thomas H.; Pinson, Adolphus; Poole, Germaine; Pope, Carolyn Jean; Porter, Barbara Jean; Potts, Florence G.; Powell, Alice; Powers, James; Powers, Mary; Reed, Alvin D.; Reese, Ronald B.; Richards, Carol Ann; Richardson, Tommy Lee; Robbins, Patricia B.; Roberson, Ninta Mae; Roberts, Doris B.; Robertson, Johnnie Jr.; Robinson, James L.; Robinson, Marvin R.; Russell, Hige W.; Sadler, Sheila D.; Samples, Earnestine; Samuels, Barbara J.; Scales, J. B. Jr.; Shankle, Zerlene; Shavers, Barbara A.; Shaw, Luther Jr.; Shaw, Madilynne C.; Shaw, Mary L.; Sheets, James A.; Shelton, Naomi G.; Shepherd, Ruth E.; Sherman, Dorothy L.; Smith, Jeanne; Smith, Kenneth W.; Smith, Luresia; Smith, Yvonne J.; Sowell, Joyce L.; Spears, Ralph R.; Spencer, Ollie W. Jr.; Spikes, Gladys M.; Spramer, Wilam F.; Stevens, Yvonne E.; Sturns, Wiley; Sturges, Earnestine; Swift, James; Tarver, William A.; Taylor, Jeanette; Thomas, Arthur L.; Thomas, Dorothy J.; Thompson, Alex; Thompson, Aria M.; Thompson, Sammie; Turner, Donald; Turner, Ronald H.; Upson, Jessie M.; Vaughn, Waddleton, Annie B.; Wagner, Ella M.; Wallace, Ola M.; Warren, Ethyl; Washington, Delores; Webb, Barbara; Wells, Estella; Wesley, Curtis



ENGINEERING SCHOLARSHIP — President A. I. Thomas, Assistant Dean Austin Greaves, Dr. R. N. S. Rao and an engineering student entertain a visitor from industry who made a grant to the college.



FACULTY MEMBER VISITS GE PLANT — Professor Joseph Phillips of Prairie View A&M (third from left) inspects manufacturing facilities at the General Electric Company, San Jose, California plant during the 25th GE Engineering Professors Conference held recently.

The Atlantic Richfield Foundation Gives Grants To Thirteen Schools

The AtlanticRichfield Foundation has announced awarding of aid to education grants totaling \$344,900 to 67 colleges and universities and 17 educational foundations throughout the nation. Thirteen of the schools are in Texas.

PV Native Named Top Senior At Kansas

John C. Williams, Prairie View, has been named one of thirty outstanding seniors at Kansas State University for the 1967-68 year. The outstanding seniors, who were featured in the 1968 Royal Purple yearbook, were chosen by a panel of the Royal Purple editors and advisers. They were selected on the basis of scholarship, leadership and service to the college and university. Williams has been a member of Blue Key, senior men's honorary; Chancellor of Tribunal,

Dr. Collins To Attend Institute

Dr. L. C. Collins, Head of Biology Department received an invitation to attend the Institute for Development Biology Symposium on the Structure and Functions of Viral Nucleic Acids at Estes Park, Colorado.

This symposium was sponsored by the University of Colorado Graduate School at Boulder, Colorado. Outstanding scientists from several schools in New York, California, Kansas, Colorado, Indiana, Illinois, Wisconsin, Utah, Georgia, Oregon, North Carolina, Maryland, Canada, New Jersey, Delaware and Texas attended and participated in the excellently organized symposium.

Director of Cultural affairs, Tau Sigma Delta, architecture honorary; Convocations committee, Controversial Issues Speakers committee, American Institute of Architects, Canterbury Association and Philosophy Club.



SCIENCE INSTITUTE — High School students in the annual Summer project sponsored by the Science Department are shown in the laboratory assisted by a Professor.

SAINT MARTIN DE PORRES CATHOLIC CHURCH

Drawer R PRAIRIE VIEW, TEXAS
Mass Schedule — Sunday at 7:30 p.m.
Tuesday, Wednesday, Thursday at 5:00 p.m.
Catholic chaplain is available for counseling on Tuesday and Thursday, on the second floor of the Grounds and Maintenance building.
Newman Meetings at present are on Tuesday at 7:00 in the Student Union, Room 204.
Pastor: Father W. D. Salisbury, S.S.J.

THE EPISCOPAL CHURCH

WELCOME YOU
ST. FRANCIS' CHURCH AND STUDENT CHAPEL
(Adjacent to Campus)
Vicar: Father James Moore
SUNDAY SERVICE — 9:00 a.m.
SUNDAY SCHOOL — 10:15 a.m.
Evening Prayer — Tuesday through Saturday — 5:15 p.m.

SPECIAL PROGRAMS

Experiment In Living

Building positive self-images, understanding the significance of the academic, vocational, and social roles of young people and preparing for a challenging and exciting academic climate are among the objectives of the summer project, "Experiment In Living", currently underway at Prairie View for twenty participants.

The project, in its second summer, has been designed for 1968 high school graduates who ranked in the upper ten percent of their class with the recommendation of their high school principals. Formal classes in college science, family living, music and art appreciation, drama, speech, and creative and modern dance are some of the activities for which the twenty participants are scheduled.

Additionally, through the medium of daily seminars, an effort is being made to aid the students in exploring the various academic disciplines offered at Prairie View. To this end, eighteen (18) department heads and school deans have been invited to give the participants an overview of their own academic disciplines and a profile of the type of student who experiences success or failure in that discipline.

The point being to give the participants, who are entering freshmen, more facts from which to make choices of a major and minor field of study. Hopefully, as a partial result of these experiences, the participants will not find themselves in the predicament of constantly changing from one major field to another with its resultant frustrations. Some other experiences, to date, include an exhaustive survey of the W. R. Banks library with the cooperation and direction of the college librarian and his staff; the structuring of a dormitory council with the direction of four Junior Fellows and Miss Hawley of the student personnel staff, and organized recreational experiences. The anticipation is that the "Experiment in Living" participants will have an opportunity for off-campus cultural contacts and other educationally meaningful experiences in the waning days of the six-weeks session. These would include Houston-area music theatre and general tours and a dinner meeting with college officials and guests.

Teachers for the participants are Mrs. Outley of the Home Economics department, Mr. Gib-

NAME	HOMETOWN	SCHOOL
Ayers, Almer J.	Gause	Smith High
Brown, Sheila E.	Whichita Falls	Booker T. Washington
Bostick, Rita M.	Brookshire	Royal High
Burton, Wilma J.	Waco	Moore
Davis, Annie L.	Tyler	Scott
Edwards, Barbara	Houston	Kashmere
Fields, Erma	Crockett	Bunche
Gibson, Walter R.	Oakwood	Dunbar & Oakwood
Gordin, Larry D.	Mexia	Dunbar
Harrison, Yvonne	Lufkin	Dunbar
Higgins, Janice L.	Wichita Falls	Booker T. Washington
Holman, Eunice	Lufkin	Dunbar
Jackson, Clifford	Wichita Falls	Booker T. Washington
Johnson, Fannie	Waco	Moore
Lee, Sandra G.	Tyler	Scott
Nelson, Elizabeth L.	Milano	Milano High
Folk, Deberah	Beaumont	Charlton-Pollard
Robertson, Rex	Bay City	Bay City High
Watkins, Sallie M.	Conroe	Booker T. Washington
Young, Barbara A.	Bay City	Bay City High

Upward Bound Project Begins Third Year

The Prairie View A. and M. College Upward Bound Project has started its summer program on campus for the third successive summer. The staff, composed of college and high school teachers, counselors from nearby high schools and graduate and undergraduate students, arrived on campus June 10th for a five day orientation program. The participants arrived on campus June 16th with the orientation program starting on June 17th.

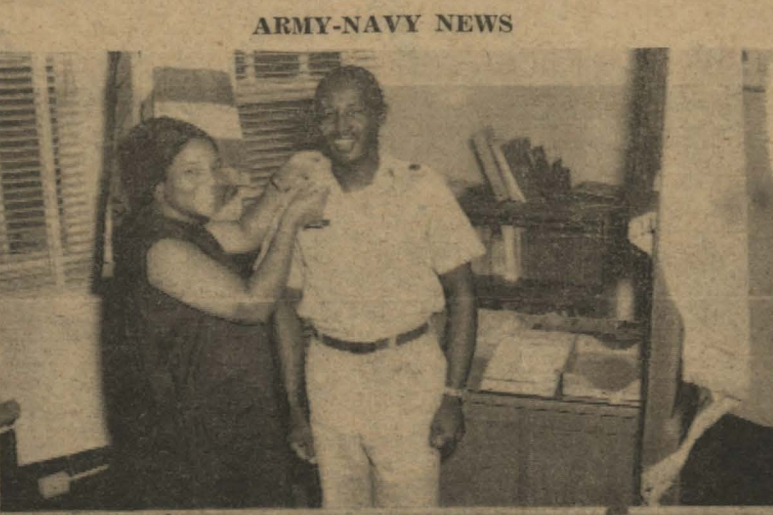
The participants of the program come from high schools in Brenham, Brookshire, Conroe, Galveston, La Marque, Navasota, Prairie View, Sealy, Waller, Wharton, Hempstead, Houston, and Hungerford. The Upward Bound Project is financed jointly by the Office of Economic Opportunity and Prairie View A. and M. College, and sponsored by the college. The program is designed for high school students from low income families with the potential for college, but who may or may not have been motivated to seek an education beyond high school.

The Prairie View Project includes a program designed to (1) provide motivation for its participants as well as developmental and remedial opportunities. A wide variety of activities, many of an optional nature, are provided which include mathematics, communications, typing, reading, music, art, crafts, driver education, photography, ceramics, copper tooling, electron-

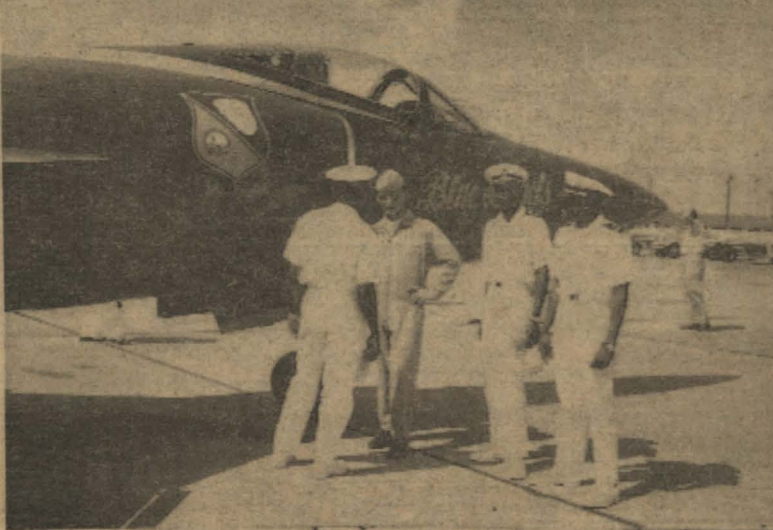
ics, metalcrafts, welding, and IBM Key punch operation. Many opportunities are also provided for recreation and trips of an educational and cultural nature. One of the trips planned for the summer will include the HemisFair at San Antonio. A special feature of the program this summer, and a new innovation, includes the enrollment of the high school graduates in two college courses. These students and this feature represent a "bridge" program for those students who will enter college, full time, in September. The courses will grant six semester hours of college credit if successfully completed. The professors for this aspect of the program are Mr. William H. Chapman and Mr. Sidney W. Spalding, of the Department of English and Mr. Lionel Ware, and Mr. Willie E. Taylor of the Department of Mathematics, Prairie View A. and M. College. Two of the members of the Prairie View Project are involved in activities off campus this summer. Jacqueline Branch, a high school graduate from Royal High School, Brookshire, Texas, is a participant in the Experiment for International Living, and will spend the summer in Mexico City, Mexico, and Henry L. Clark, Jr., a student at Waller High School is attending the Yale University Summer High School at New Haven, Connecticut. Phillip Burke, formerly of Central High School, Galveston, Texas, has returned to the project after a year at



EXPERIMENT IN LIVING GROUP



ARMY-NAVY NEWS



TOP PHOTO — Major Maynard Brown is pictured with Mrs. Brown following his promotion and announcement of orders to service in Viet Nam. Center — Navy men during recent visits off-campus.

eral different institutions. Among these are Miss Cheryl Parker, Hempstead High School; Miss Sharon Carter, Southwest Texas State College, at San Marcos and Miss Loretta M. Cielinski, from Stephen F. Austin College, Nacogdoches, Texas. Those from Prairie View are Mr. Sammie Tate, Miss Clarissa Gamble; Mr. Carl E. Settles, Mr. Carl E. Moore, Mr. Climon O. Harvey, Mr. Daniel S. Anderson, Miss Faye E. Brown, Miss Anna M. Conner, Miss Amy Joyce Davis, Miss Clara A. Crawford, Miss Sylvia Watson, Miss Myrtle J. Williams and Miss Amanda L. Williams.

The project is ably supported through the cooperation of all segments of the college, and has experienced the success it has through the interest exhibited by all concerned. The project is directed by Dr. Carl C. Weems, a member of the Staff of the Department of Education.

Directory

CONTINUED from Page 6
L.; White, Katherine; Wickware, Joe O.; Williams, Bobby Roy; Williams, Claudette; Williams, Johnnie L.; Williams, Mary P.; Williams, Mazie; Williams, Myrtis; Williams, Myrtle J.; Wilson, Jo Ann; Wilson, Tommy Earl; Woffard, Verta B.; Woodson, Cornelia; Woodson, Linda; Yance, Dillion; English.

PV Wins NAIA Track Title

Keeping the PV winning flag high, the college track team, coached by Hoover Wright, has looked good in meets all across the nation this year, and climaxing with the coveted national (N. A. I. A.) championship.

The local team clocked 3:06.5 in the mile relay to win the national title in Albuquerque, New Mexico. Prairie View with 47 points, Arkansas AM&N was second with 45 1/6 points and Eastern Michigan third with 42.

Panther James Bagby also won a first in the shot put with a throw of 57 feet and 7 8 inches.

Coach Wright's team also participated in the U. S. Track and Field Federation National Championship meet at Butler Stadium in Houston.



Olympic Trials

A few of Prairie View's top performers participated in the Olympic Trials held in Los Angeles on June 29-30. The surprise of the occasion was "a lean whippet" named Felix Johnson who ran the fastest 800

meters of his life. Johnson, who just completed his junior year at the college, led for the first lap of the 800 meters and for the second straight day refused to wilt. Johnson finished strong in 1:46.5, only two strides behind Oregon's Wade Bell's 1:46.1.

Grid Team May Play Game In Dome and Washington D.C.

In making final schedule plans, it has been revealed that there are possibilities the Panthers may play Grambling in Washington, D. C. and Texas Southern in the Astrodome in Houston.

Both speculations are rather exciting and both are possible at this date. The Athletic Council is negotiating with the promoters of the annual "Capital City" or "D.C." Classic in Washington concerning the scheduling of Prairie View's regular home game with Grambling in the Nation's Capitol. The council is currently studying the invitation and so are Grambling officials.

The proposition calls for bringing the game to P. V. fans via closed circuit television.

The astrodome possibility grows out of the fact that Prairie View will serve as host in the annual P. V.-T. S. U. classic on November 23 and the old Jeppesen Stadium site may not be available. But P. V. and T. S. U. fans feel that this is the one predominantly Negro college game big enough to entertain the idea playing in the "dome".

The game when hosted by P. V. has attracted from 15 to 20,000. With the added attraction of the Astrodome, it will be upped to 30-40,000, some fans believe.

Announcement

CHORAL WORKSHOP

Under the auspices of Prairie View A&M College DR. ROBERT HENRY, Director

Nassau, N. P., Bahamas

AUGUST 8-31, 1968

Combine Vacation With Study In Beautiful Nassau

Registration Fee:	\$5.00
Tuition:	37.50
Room and Board:	131.25

For Further Information Contact:

DR ROBERT HENRY

Department of Music

Prairie View A&M College

Prairie View, Texas 77445

DUCK INN

At the Duck Inn Where All Good Friends Meet to Chit-Chat and Eat

Proprietors: Mr. and Mrs. R. L. Owens

Phone DR 2 9608

Waller, Texas

JULY CLEARANCE SALE

FRENKIL'S

HEMPSTEAD, TEXAS

MANHATTAN SHIRTS

JARMAN SHOES

STACY-ADAMS SHOES

SUITS

SPORT COATS

SWEATER SHIRTS

SPORT SHIRTS

DRESS PANTS

CASUAL PANTS

Many More Items on Sale