

Prairie View A&M University

Digital Commons @PVAMU

PV Panther Newspapers

Publications

12-17-1965

Panther - December 1965 - Vol. XXXIX No. 7

Prairie View A&M College

Follow this and additional works at: <https://digitalcommons.pvamu.edu/pv-panther-newspapers>

Recommended Citation

Prairie View A&M College. (1965). Panther - December 1965 - Vol. XXXIX No. 7., *Vol. XXXIX No. 7*
Retrieved from <https://digitalcommons.pvamu.edu/pv-panther-newspapers/453>

This Book is brought to you for free and open access by the Publications at Digital Commons @PVAMU. It has been accepted for inclusion in PV Panther Newspapers by an authorized administrator of Digital Commons @PVAMU. For more information, please contact hvkoshy@pvamu.edu.

Holiday Spirit Permeates Entire Campus

Sunday School Collects Over 500 Goods for Needy Families

Christmas brighten-up is now in effect at PV and the holiday spirit is in the air everywhere.

Several campus buildings, dormitories, and faculty cottages have been in the Christmas spirit for a long time. The largest decorations on any one building seems to be the School of Industrial Education and "old" Agriculture Building, also the Administration Building.

The largest single indication of ensuing holidays is the round of Christmas parties sponsored by campus clubs and organizations. The MSC facilities have been booked solid throughout

the week as organizations sponsor gay parties and festivities.

The College Sunday School is to be commended this year for collecting more than 500 canned goods and \$23 in money received from Prairie View students. The canned goods will go for needy families in the greater Prairie View-Hempstead area.

The A Capella Concert Choir, under the direction of Dr. H. Edison Anderson, will present a radio broadcast of Christmas music on Sunday, December 19, from 2-3 p.m., over Radio Station KWBC, Navasota.

Winfree's Super Market, Hempstead is sponsoring the hour-long program.

The program, which includes spot announcements about the college, will consist of ten numbers — Silent Night, Angels We Have Heard On High, Prepare Ye, Praise Ye The Lord, Alleluia, Carol of the Drum, Brazilian Psalm, Dream, and Great God Almighty. Silent Night is used for the Theme of the program.

The entire college is awaiting 12:00 noon Saturday when holidays begin.

PANTHER

"The Voice of the Students of Prairie View"

Volume 39, No. 7

Prairie View A. & M. College, Texas

December 17, 1965

Higher Education Act —

Additional Federal Loans, Grants Ready for Students

Beginning in January, Prairie View students may secure additional federal grants and loans to help pay school expenses. Application forms are available now and should be filed in the office of the Dean of Students, by January 10, 1966.

Under the Higher Education Act of 1965, provisions have been made for outright grants to students to cover half of their college expenses for the year. Such grants are made only to needy students whose families are unable to make any contribution toward education costs.

The Federal Guaranty Loan Program is another provision of the Higher Education Act. Loans are available to all students whose family income is less than \$15,000. Students may borrow from any lending agency and the federal government will pay all interest until graduation and half of the interest after graduation until the principal is paid.

In the case of grants, students ranking in the upper half of their classes are eligible for an additional \$200 per year. According to Prairie View fees, a

needy student can apply for a \$400 grant (half the year's expenses) and if he is doing well academically, he can run this amount up to \$600.

Eligibility of Students

In order to establish eligibility for participation in federal assistance programs, including the work-study program, Prairie View is now participating in the College Scholarship Service, a national agency which serves most major colleges in determining needs of students from an objective measurement.

Students must enroll in the College Scholarship Service early in January if they wish to continue or be added on any scholarship, grant or loan programs at the college. Forms are available in the Dean of Students' office.

Under the Higher Education Act, eligibility for the Work-Study Program has been extended to all students who are determined by the institution to be in need of financial aid from part-time earnings. The original \$3000 maximum for family income has been revised to \$3200 for combined family income without dependents. Allowance for additional dependents will be as fol-

PR's, Nurses Start Campaign on Blood For Vietnam Victims

Plans are being finalized for a Blood Donor Campaign on Campus that is being sponsored by Company Q-17 of the Pershing Rifles in conjunction with the Students Nurses Association.

The blood is to be given for American battle casualties in Vietnam. A gift of one of your eight pints of blood is only a small way of exhibiting your support of the Americans who are in some cases sacrificing even their lives for the cause of freedom.

Tentative dates for the campaign are the 13th and 14th of January. It is planned that a mobile Blood Reception Unit will visit the campus on these dates. In order for the unit to come to the campus a minimum of 100 donors is required; so plan to make your contribution toward National Defense by watching for notices of the exact dates and give one pint.

low:	No. of Children of Other dependents	New Income Level
	1	\$3200
	2	4000
	3	4800
	4	5300
	5	5800
	6	6200
	7	6600

Board of Directors Approve Projects

Physical improvement projects for the Prairie View campus totaling approximately \$53,000 have been approved by the Board of Directors of The Texas A & M University System.

A \$25,000 appropriation was made by the directors for a study of the college's library expansion. The college is planning to improve its total library facilities, including major building instruction to meet present and future needs.

Three buildings will be re-roofed at a cost of \$21,078. The Thomas and Parker Waterproofing Company of Shreveport was awarded the contract.

A total of \$6,975 was also approved for improvements at the college hospital.



HOBART TAYLOR, JR. (right) standing with Dr. E. B. Evans visited the College campus recently when he spoke at the Leadership Conference. Taylor, a PV grad and a lawyer, is special counsel for the President's Committee on Equal Employment Opportunity and is an associate counsel to President Johnson.



Once again the Star of Bethlehem burns brightly . . . may it illumine your heart at this Holy Season — **PANTHER** Cartoonist Clarence Porter, looks to the star of Bethlehem as he draws and paints scene as part of his class work. Porter is an Industrial Education Major, from La Marque.

To be Conducted July-August '66 — College to Sponsor Counseling Institute

The Prairie View Agricultural and Mechanical College has been awarded a contract by the U. S. Office of Education pursuant to Title V (B) of the National Defense Education Act of 1958, as amended, to sponsor a Short-term NDEA Counseling and Guidance Institute for secondary school personnel, particularly Counselors and Counseling and Guidance Personnel engaged in, or teachers preparing to engage in Counseling and Guidance in Secondary Schools.

The purpose of the Institute is to help provide more fully trained guidance workers for employment in the public school systems of the region(s) served by the College. Through training received in the Institute by persons at the secondary school level individuals will be provided who can identify able and deficient students and develop imaginative programs of counseling and guidance designed to overcome the deadening effects of

deprived conditions. The NDEA Counseling and Guidance Institute will be conducted at Prairie View A. & M. College July 18 through August 27, 1966.

In addition to the purpose stated above specific objectives of the Institute are designed to produce and/or strengthen various anticipated behavioral outcomes, which the enrollees are expected to achieve through the advanced study offered.

In short this Short-term Institute is planned to afford those individuals actively engaged in counseling in schools throughout the region (s) served by the College an opportunity to gain counseling skills and techniques, gain a greater degree of self-understanding, more understanding of culturally disadvantaged people, and to gain stimulation in the field of Counseling and Guidance. In addition, the Short-term Institute, with-

See COUNSELING, Page 3

NEWS IN BRIEF

The student-faculty directory is now being published by the Press Club, and is expected to go on sale by the end of the semester. The directory will include the listings of the students and faculty names, the addresses and majors of the students as well as the hometown addresses will be listed.

PRAIRIE VIEW PROFESSORS ATTEND TACT MEETING

Dr. Charles Urdy, President of the local Chapter of TACT and Dr. E. E. O'Banion, a member of the executive committee

attended the state Policy meeting held in Austin, Texas, December 3, and 4, 1965. Representatives from twenty-two colleges were in attendance.

Among the topics discussed were fringe benefits, faculty compensation, faculty participation and in University and College government and sabbatical leaves.

The Prairie View Chapter's membership had increased 115.6% since the last policy meeting. This represented the largest increase among the twenty-two chapters.

DPS Predicts 195 Deaths

This Christmas-New Year's Holiday Period Must Not Exceed Last Toll

Past experience indicates some 110 persons will be killed in traffic accidents during the 10-day Christmas-New Year's holiday period, it was reported today by Col. Homer Garrison, Director of the Texas Department of Public Safety.

Garrison said in addition to the grim traffic death projection made by DPS Statistical Services, it is also estimated that there will be 43 homicides and suicides and 42 deaths from accidents other than traffic, for a

See DPS PREDICTS, Page 2

Debaters in San Jacinto College Debate

The Prairie View debate club entered two teams (negative and affirmative) in the debate at San Jacinto College, Pasadena, on Saturday, December 11. The college debate title for this season is **RESOLVED: THAT LAW ENFORCEMENT AGENCIES SHOULD BE GIVEN GREATER FREEDOM IN THE INVESTIGATION AND PROSECUTION OF CRIME.** No decisions were made and no win-

ners chosen because this was a first for most of the debaters. However, constructive comments were made and constructive criticisms were given. The Prairie View teams consisted of Scott Thomas and James Melton and Archie M. Williams and Maxine Burley. They are coached by Mr. Donald Fisher and were accompanied by Mr. Ernest P. Williams, one of the sponsors of the club. Other colleges participating were Houston Baptist College, Mr. David Thomas, coach and San Jacinto College, Mr. Jerry Callihan, coach. Mr. Callihan also served as host for the debate.

The debaters are looking forward to debates that are to be held at Texas Southern University, Baylor University, Grambling College, Colorado College, and Stephen F. Austin College. The club plans to sponsor a debate tournament at Prairie View in the near future.

DPS Predicts 195 —

CONTINUED from Page 1
total violent death toll of 195.

APPEAL ONCE AGAIN

"We would like to appeal once again to the driving public to join us in an all-out effort to cut down on this terrible toll, particularly in traffic where observance of traffic laws and rules of safety can actually do something about it," the DPS director said.

In an effort to call attention to the dangers involved in holiday travel, the DPS will conduct its annual "Operation Death-watch" during the 10-day period. From 12:01 a.m. December 24 (Christmas Eve) through 11:59 p.m. January 2, violent deaths will be tabulated and the totals announced three times daily from the Department headquarters in Austin.

EXTRA PATROLMAN

"We will also have every available patrolman on duty," Garrison said. "These men are on the road to protect and serve the citizens of this state. In addition to the highway patrol, there will be some 150 extra patrolmen from other DPS uniformed services on duty."

During last year's Christmas-New Year's holiday period, a total of 228 persons died violently. Of these, 128 were killed in traffic.

ELEVEN PER DAY

This year's estimate of 110



When you can't afford to be dull, sharpen your wits with NoDoz™

NoDoz Keep Alert Tablets fight off the hazy, lazy feelings of mental sluggishness. NoDoz helps restore your natural mental vitality... helps quicken physical reactions. You become more naturally alert to people and conditions around you. Yet NoDoz is as safe as coffee. Anytime... when you can't afford to be dull, sharpen your wits with NoDoz.

SAFE AS COFFEE



College Singers Give Christmas Cantata

The Annual Christmas cantata was given on Prairie View A & M College campus the evening of Sunday, December 12. A fine cast of dramatic singers presented that perennial favorite, "Amahl and the Night Visitors." The capacity audience filling the College Auditorium was most appreciative of the seasonal theme stressed, making Christmas a time for more than giving and receiving gifts, but a time of Christ-centered renewal and enthronement.

Joan Holbert and Mary Hunter played the leading roles of Amahl and his mother, with Shirley Vaughn and Lillian Hodge the understudies. The operatic roles of the three Kings were admirably sung by Keny Arnold, Bob Ducken, and Pichard Perkins. Alfred Earle enacted the role of Page, while Deborah Collins and Zerna Portis enlivened the scene with vivacious dances. Fine support was always in evidence from Diane Pierson, the pianist and Fayette Moore, organist.

Great credit is due the coaches from the Music Staff, who guided faithfully the production. Although the director, Dr. Von Charlton, was in the hospital with a serious operation three days before the production, Dr. Anderson, Miss Sally Allen, Mr. Willis Callihan and Mr. Horace Bond carried on to a worthy completion.

Focus on Southeast Asia -

CONTINUED from Page 5

problem in Southeast Asia for the U. S., the dispute between Indonesia and Malaysia has also created serious problems. The problems of Indonesia and Malaysia would seemingly point to the fact that there is a lack of Nationalism in the Southeast Asia countries.

The Mekong River Project, which is no doubt for the benefit of all Southeast Asia, is a plan to implement economic development. Last April 7 at John Hopkins University, President Johnson announced one of the most significant new emphasis in U. S. Policy in Southeast Asia in this century. "Neither independence nor human dignity will be won by arms alone, it also requires the works of peace." The American people have helped generously in these works. Now there must be a much more massive effort to improve the life of a man in the conflict-torn corner of the world. The first step is for the countries of Southeast Asia to associate themselves in a greatly expanded cooperative effort of development." This cooperation would mean possible unification of the countries.

Nevertheless, the problem is here and do we,

the meeting was adjourned. Donald Dorsey, President, Student Government Ass'n. Marjay Anderson, Secretary (Recording), Student Government Association

Alpha Kappa Mu Initiate Four New Members Into Honor Society

The Alpha Pi Mu Chapter of Alpha Kappa Mu initiated four new members into the honor society during the Initiation Ceremony, Monday, December 6. These new members are Rogers Whitmire, junior mathematics major from Houston, Texas; Lora Beasley, junior history major from Tyler, Texas; Edell Lydia, junior mathematics major from Fort Worth, Texas; and Albert Lester, junior Chemistry major from Clarksville, Texas.

These persons were admitted into the society after a brief probationary period during which they learned more about Alpha Kappa Mu, its history, aims, and principles and submitted a research paper dealing with some aspect of their major field.

These new members, along with the present members, will continue to carry on the tradition of Alpha Kappa Mu.

Such a tradition is the Alpha Kappa Mu Tribute to Scholarship. The most recent tribute was made to those students who made the honor roll as a result of grades obtained during the second semester. At this program, Mr. Robert Mortimer, Woodrow Wilson intern and assistant professor of Political Science, addressed the honorees

on October 10, 1965 in the Ballroom of the Memorial Center. Were you among the honorees? If so, keep up the good work. If not, you still have another chance.

This is only one of the bi-annual tributes to scholarship by the Alpha Pi Mu Chapter of Alpha Kappa Mu Honor Society.

Of course, "all work and no play makes Jack a very dull boy." So... at the close of the school year in May, 1965 the members of Alpha Pi Mu Chapter journeyed to Houston for a day of acquiring knowledge in a fun-filled way. From the Museum of Fine Arts, we travelled to the Museum of Natural Science where, after a while of browsing, we found our way to the Planetarium to see the heavens as they really are. We dined at the Sheraton-Lincoln in the French Room but left this exquisite atmosphere for the Astro-dome Stadium to see the baseball game between the Los Angeles Dodgers and the Houston Astros. (Leo McAfee almost got Willy Mays' autograph). Then back to good old P. V. tired but content.

So you see there are definite advantages in being a member of AKM besides being pegged a "brain."

Bernadette Mosby Reporting

or will we eventually have a solution to it. About 190 years ago, America was fighting for her independence. We gained that independence by other countries helping us. Now we want South Viet Nam to get eventual autonomy for her people. It is clearly seen that this is the reason why the U. S.'s policy in Viet Nam is to carry war there as far as necessary to make Hanoi cease and desist and give 16 million people a free independent government, and no possible withdrawal because this would mean communist takeover.

If you were asked if you supported the United States position, in Southeast Asia so as to allow Viet Nam Independence, what would be your answer?

Check

I SUPPORT THE UNITED STATES POSITION IN VIET NAM
I DO NOT SUPPORT THE UNITED STATES POSITION IN VIET NAM
After making your decision, please bring ballot to the Memorial Center Desk and place in ballot box. If you would like to support your decision, do so below.

SAINT MARTIN DE PORRES CATHOLIC CHURCH

Drawer R
PRAIRIE VIEW, TEXAS

Mass Schedule — Sunday at 7:30 a.m.
Tuesday, Wednesday, Thursday at 5:00 p.m.

Catholic chaplain is available for counseling on Tuesday and Thursday, on the second floor of the Grounds and Maintenance building.

Newman Meetings at present are on Tuesdays at 7:00 in the Student Union, room 204.

Pastor: Father W. D. Salisbury, S.S.J.



Enjoy generous room discounts at most Sheratons. (Teachers can enjoy the same discounts.) Ask for your free ID card from the Sheraton representative on campus.

CARLES N. WHITAKER
Men's Dorm, No. 4 Box 2126
Prairie View A&M College Prairie View, Texas

Keyed-up students unwind at Sheraton... and save money with this free Student ID Card
Sheraton Hotels & Motor Inns

WANTED!

YOUR PATRONAGE

at

FOWLER'S SUPER MARKET

"Where shopping carts look larger because the prices are lower."

TRY US AND SEE!

FOWLER'S SUPER MARKET

Hempstead, Texas

VA 6-2436

College to Sponsor Counseling Institute —

CONTINUED from Page 1

out regard to ethnic group or place of employment, will be open to those counselor candidates who through participation in the NDEA Institute could at least culminate the first year of a two-year program, such persons must be teachers who are preparing to engage or are at present engaging in Counseling and Guidance work.

Five major subject matter areas will form the core around which carefully planned didactic experiences will be structured—

(a) Psychosocial Dynamics in Relation to the Personalities of Culturally Disadvantaged Group Members Seeking to Adjust in the Face of Cultural Handicaps.

(b) Selection, Use, Administration, and Interpretation of Test in Guidance.

(c) Supervised Practice Work in Counseling and Guidance.

(d) Principles and Techniques Related to Effective Counseling.

(e) Reading Instruction

Enrollees who successfully complete the Institute will be eligible to receive six (6) semester hours of graduate credit in Counselor Education. Such academic credit can count toward professional certification in Guidance and will be considered equivalent to the academic credit earned in two of the three courses listed below:

Guidance 603 — Supervised Practice in Guidance and Counseling

Guidance 733 — Principles of Counseling

Guidance 513 — Psychological Testing

Permanent staff for the six-week NDEA Counseling and Guidance Institute will include the following individuals—

Dr. George H. Stafford, Director of the Counseling Center and Professor of Education, Prairie View A. & M. College, Director.

Dr. Wayman T. Dever, Professor of Education, Prairie View A. & M. College, Staff Member.

Dr. Jamasanna Kirvin, Counselor Kealing Junior High School, Austin, Texas and Visiting Professor of Education, Prairie View A. & M. College, Staff Member.

Mrs. Evelyn Johnson, Professor of Sociology, Prairie View A. & M. College, Staff Member.

Mrs. Mamie McKnight, Visiting Professor, Prairie View A. & M. College and Counselor, James Madison High School, Dallas, Texas, Staff Member.

Mr. Harold Johnson, Counselor Fidelity Manor High School, Galena Park, Texas and Visiting Professor of Education, Prairie View A. & M. College: Staff Member.

Dr. Flossie M. Byrd, Dean, School of Home Economics, Prairie View A. & M. College: Visiting Lecturer.

In addition to the following, consultants will participate in the Institute:

Dr. Joseph T. Schnitzen, Director, Counseling and Testing Service, University of Houston, Houston, Texas.

Dr. Charles McCandless, Assistant Professor of Education, Texas A. & M. University, College Station, Texas.

Eligibility requirements are as follows:

1. An overall average of "B" in the upper division of undergraduate work and in previous graduate work.

2. Evidence of personal characteristics conducive to further growth and employment in the area of counseling and guidance.

3. Current employment as a secondary school teacher or

counselor with definite guidance and counseling responsibilities.

4. Previous professional preparation in the field of Counselor Education—the minimum being 24 semester hours earned in this area.

Each Institute enrollee is eligible to receive a stipend of \$75 per week plus \$14 per dependent while attending the Institute. The enrollee must bear the expense of any textbooks required of all who attend the Institute.

The deadline for applying for participation in the NDEA Institute is February 15, 1966. Those to be accepted will be informed by March 15, 1966.

Ample dormitory space, air conditioned, will be available to house the Institute participants at very reasonable costs; Living quarters may also be obtained in the community adjacent to the campus. Meals may be obtained in the College Cafeteria, in the Memorial Student Center and in nearby restaurants at reasonable costs.

Application forms and additional information about the Institute may be obtained from:

Dr. George H. Stafford
Director, NDEA Counseling and Guidance Institute
Prairie View Agricultural and Mechanical College
Prairie View, Texas 77445

College-Supported Faculty Research Projects Underway

The Faculty Research Reviewing Panel has announced that faculty research grants have been made available to the following staff members:

J. E. Berry, "Studies on the Biology of Monogenetic Trematodes from the Gills of Fresh-water Fishes"

L. C. Collins, "Metabolic Influences of Methotrexate"

T. P. Dooley, "Minimum Lethal Concentration of ABS and LAS on Fish"

A. A. Dunson, "The German Newspaper in Texas"

R. E. Gibson, "Studies in Immunology"

E. K. Jones, "Behavior of the Hydrates and Amomates of Halides of Certain 3-d Elements Under Partial Vacuum"

H. T. Jones, "An Identification of Key Factors in the Family History of Training School Pupils to Determine the Special Education Needs of Children of Low-Income Families"

E. M. Lewis, "Urban Negro Politics in Texas"

R. W. Lewis, "Factors Influencing Homograft Reactions in the Chick"

E. W. Martin, "The Influence of Thyroid Analogs on Development of the Brain in the Frog (*Rana Pipiens*)"

J. B. Murphy, "A Follow-up Study of Student Teachers in the School of Arts and Sciences, 1960-1965"

E. E. O'Banion, "The Catalytic Oxidation of Organic Compounds in the Vapor Phase"

G. H. S'afford, "Concentration on Preparatory Education (COPE)"

G. R. Woolfolk, "The Origin of Native Capital in Texas: A

Test of the Rostow Thesis"

The size of the individual grants range upward to \$2,500.00. The average of all the faculty research grants is \$2,063.00.

College Observes Nutrition Week

"Nutritional quackery as a major health problem" was the theme of Prairie View A & M College's Annual observance of NUTRITION WEEK ON December 6-8.

Mrs. Leona Allman, consumer consultant for the Federal Food and Drug Administration, Dallas district served as consultant during the three days of activities sponsored by the School of Home Economics. Mrs. Allman received top recognition for her work in 1964 when she was selected as the outstanding consumer consultant.

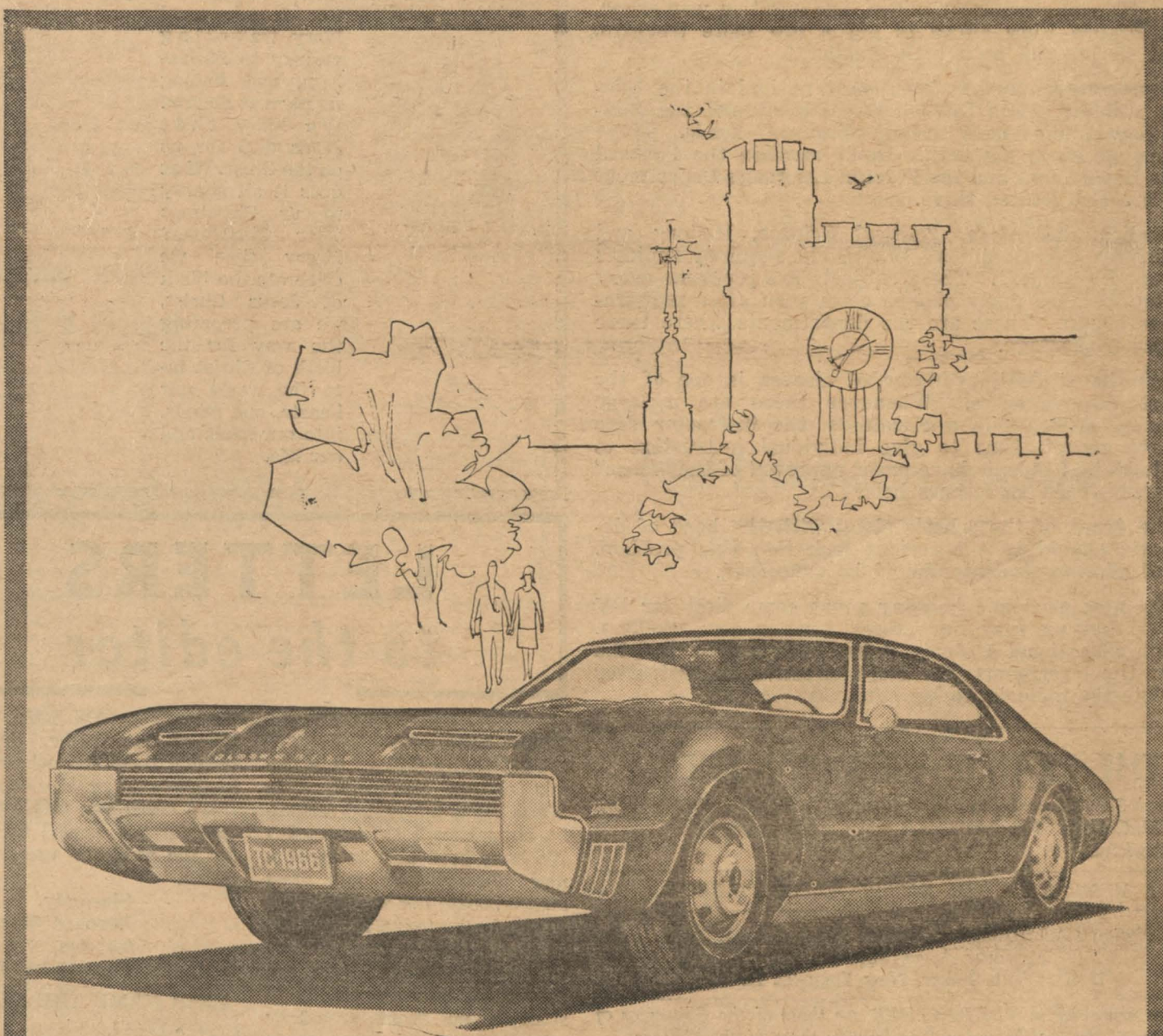
Several lectures, exhibits and dissension centered around the fact that Nutritional Quackery is a health problem as well as an economic one. It was pointed out that persons interested in profit will promote products by pseudo-scientific statements, using half-truths and gross exaggerations to build up a scare psychology that will persuade people to buy.

DS Predicts 195 —

CONTINUED from Page 2

considerably greater than the normal daily average of traffic deaths, Garrison noted.

In addition to the DPS effort to hold down the toll, several other organizations and state agencies are cooperating in an effort to focus attention on the need for safe driving practices. Among these are the Texas Safety Association, the Texas Highway Department, The Texas Motor Transportation Association, and the Texas Broadcasters Association.



Re-write the books!

There's a change in curriculum. Toronado's in! Front wheel drive with 385-horse Rocket V-8 takes boredom out of the course! No more cramming—with flat floors, six passengers are a snap! Toronado styling takes honors over anything else on the road! In fact... sample the style and action of any of the Toronado-inspired Rocket Action Oldsmobiles. You'll want to major in Olds ownership! LOOK TO OLDS FOR THE NEW!

STEP OUT FRONT
IN '66

...in a Rocket Action Car!



TORONADO • NINETY-EIGHT • DELTA 88 • DYNAMIC 88 • JETSTAR 88 • CUTLASS • F-85 • VISTA-CRUISER • STARFIRE • 4-4-2

OLDSMOBILE

GREAT TIME TO GO WHERE THE ACTION IS...SEE YOUR LOCAL AUTHORIZED OLDSMOBILE QUALITY DEALER TODAY!

EDITORIALS

Can't It Always Be Christmas

"Why can't it always be Christmas?" This is the question of the small child who is thrilled by the fun and excitement of Christmas. Grown-ups, thinking of all the planning and preparation that Christmas entails, may feel relieved that Christmas comes but once a year. But in a sense, it can always be Christmas, for the spirit of Christmas can be kept alive throughout the year.

Christmas is a time of giving and receiving, but need there be a reason for this? Can I not give and receive, not only at Christmas but all through the year? Christmas is a time of song, but can we not have a song of joy in our hearts and a song of praise on our lips always.

Even more important, we can keep ourselves aware every day of the reborn Christ within us by giving expression to His Spirit of love, forgiveness, compassion, miracle-working faith and joy.

Symbolic of Christmas



THE CROSS is one of the oldest of the Christmas symbols. It is found in many forms representing secular

and chivalrous meaning not only during Christmas, but throughout the year. Since the straight crossbar signifies the crucifixion of Christ, it is commonly used on church steeples. We go back

to Joseph and Mary, traveling wearily to Bethlehem, and finding no room at the Inn. We know that Jesus died for us on the Cross. What does it all signify to us Christmas after Christmas? Every time we celebrate the birth of Jesus Christ, we are preparing the way for the birth of Christ into the world, our hearts, our minds, into our souls and our life.

How Popular is Your First Name

by Beverly Thompson and Hazel Warren

Well boys we finally got to your first names. We have to give you credit for having such interesting names. Some of you have the name of Presidents, Cities, and Fruit.

Abraham, Woodrow Wilson, Roosevelt, Franklin, Garfield, Jefferson, Theodore, Ulysses and McKinley representing Presidents; Houston, Waco, and Marshall representing cities; Lemmon, Quest, and Melton representing fruits.

The other names shape up like this: James, 62; Charles, 41; William, 34; John, 30; Robert, 26; Willie, 25; Richard, 19; George, 18; Donald, 16; Arthur, 10.

Among the names we found, here are a few oddities we came up with: Mario Rene, Bennie Pearl, Spotsie, Hige, Travoyie, Manasser, Millage, Euothopus, Velva, Prince King Sargent, Tellas, Bronta, Lygrant, Esrom, Lucious, Devotte, Hosea, Israel, Ferris, D'Autry, and Hannah.

This terminates our report on the subject of names in Pantherland. We hope that each article was taken for the purpose in which it was written—that of being completely informative. We have come to many conclusions and we hope that you have been enlightened too. We hope to have fostered the idea that many people might have the same name as you or you might be the only one, but behind each common and odd name is a very warm and likeable individual.

MERRY CHRISTMAS AND HAPPY NEW YEAR!

itories for men and women at PV have been lived in "pretty" well and the newness has just about worn off, don't you think it's time that they be given a name?

Who's job is it to name them? Is it the Alumni Association's job? If not, maybe the Student Government Association should step in. Or if not either of them, maybe each dormitory should step forward.

Is someone working on it?
An Interested Person

OUR "POOR" LAUNDRY

Dear Editor:
Why is it that our laundry is like a "turtle?" It is no doubt the slowest group on campus. When you put your laundry in, it sometimes takes more than a week before you can get it back. The fact that no laundry can be accepted after 9:00 a.m. each day is absurd. The laundry even continues to damage and lose many student's clothes.

See LETTERS, Page 5

LETTERS to the editor

PQC NEEDS BOOKS

To the editor:
Paul Quinn College is a Negro church college here in Waco. (It is integrated formally, but whites have not come.) We have been able to build a new library that will hold 50,000 books; but we only have 14,000 books to go in it. Most of the shelves, therefore, are bare. The students here are good kids; they are having to struggle up from preparatory schooling that in many cases was not rigorous enough. The trustees of the college want to start a drive to get good, current college books and textbooks into our library, and they have designated me to find ways to get the books.

It occurred to us during a recent board meeting that many college students use their books and then don't want to keep some of them, but really can't get what they're worth, selling them back to the book stores, and that perhaps many of these students would like the idea of giving such books to the library at Paul Quinn. Perhaps, also, in some cases, college book stores in Texas would find it feasible to ship spare quantities of good, cur-

rent college-level books to the library here rather than returning them somewhere to be remaindered or abandoned.

We know you will seriously consider this appeal for books for the students' use at Paul Quinn.

Sincerely,
Bernard Rapoport
Trustee
Paul Quinn College

LET'S NAME THE DORMS

Dear Editor:
Now that the two new dorm-

Self-Service is In - Shoplifting Out

When the College Exchange was first in the process of being transformed into a self-service operation we heard lots of remarks as to how wonderful this was. But, why? Was it because this is what we need to bring us up to date and to make service more efficient and faster? Or, was it so you could walk out with something which is not paid for? On first hearing these remarks we agreed with you because we, too, think that this change was needed and we never had any negative thoughts as to why some of you might think that this change is wonderful. However, you who are guilty of the shoplifting that is going on disappoint us. How can, Prairie View, our school, grow and prosper with such goings-on taking place? If you are guilty of this, please refrain yourself from such a low act and why not make it your New Year's Resolution to never take anything from anywhere, again, without paying for it.

THE PRAIRIE VIEW PANTHER

Published Semi-Monthly in the Interest of a Greater Prairie View A. and M. College. The PANTHER serves as the voice of the Students of Pantherland.

A MEMBER OF THE INTERCOLLEGIATE PRESS

National Advertising Representative:
NATIONAL ADVERTISING SERVICE
18 EAST 50th STREET, NEW YORK 22, N. Y.

Opinions expressed in The PANTHER are those of the Editors or of the writer of the article and not necessarily those of the College.

Staff for This Issue

EDITOR-IN-CHIEF Lonnie D. Hunt, Jr.
MANAGING EDITOR Dotsie M. St. Julian
ASSOCIATE EDITORS Roscoe Harrison, Clinton Harvey
NEWS EDITOR Romey N. Johnson
FEATURE EDITOR Marjay D. Anderson
FASHION EDITORS Molly Johnson, Bobby Hall
CARTOONIST Clarence Porter
TYPISTS Odie B. Woods, Bobbie J. Powell,
Jeanelle Smith, Gloria D. Neal, Donetta Beverly
PHOTOGRAPHERS Clifford Ward, Sylvester Brown, II
REPORTERS Ether Lewis, Gwendolyn Jenkins, James Hart
Anita Faber
SECRETARY Theresa Tompkins
ADVISOR Dr. C. A. Wood

Subject to change each issue

Any news items, advertising, or matters of interest to THE PANTHER may be presented to the Department of Student Publications, Room B-6 Administration, Ext. 301.

An Open Letter

ROTC Meeting the Challenge

Before America with its free institutions can flourish in peace it must make certain that it survives. The nation's security and the preservation of its democratic ideals depends in a large measure on every young man accepting the responsibilities of active and vigorous citizenships. This requires the contribution of everyone's talent and service to the limit of his capacity. The concept that every citizen owes a duty to participate in the common defense is rooted in American tradition. The ROTC has in the past, and is continuing now to prepare young men to actively participate in that defense.

Recently, President Evans received a letter from a former ROTC graduate from Prairie View, that reflects the spirit and conviction with which he is participating. The letter reads:

Dear Mr. Evans:

During my college days at Prairie View, 1960-1964, I had the pleasure of calling on your office many times on matters concerning the student body or on personal matters. I again request your attention to a subject which is causing me and many other US Servicemen in Vietnam grave concern.

The news media that are received here in this war-torn country are full of articles and editorials describing the actions and thoughts of many American college students in regards to the "War in Vietnam". I sincerely hope that none of these demonstrations against U. S. Policy in Vietnam involve students of the "Pantherland."

Dr. Evans, as a serviceman in a grave registration unit, I have seen the remains of both Vietnamese and American battlefield casualties. It is my prayer that these men did not die in the cause of peace and freedom without the support of the "people back home".

After serving in the Republic of Vietnam for a few months, I can not help but feel that the course the U. S. Government is taking in this matter is a sound one, a course taken only after long and careful deliberation. May the morale of the many troops here continue to be amplified by supporters from Prairie View and other colleges and universities all over the country.

Sincerely yours,
George F. Francis, III
2nd Lt., Quartermaster Corps

The freedom which we all enjoy was won and has been preserved for us by many generations of Americans in the uniform of this country just like Lieutenant Francis. Since 1948, the Prairie View Reserve Officers Training Corps has prepared for commitment where needed some 636 Lieutenants, in order that the freedom we now enjoy can be passed on, undiminished, to future generations.

Letters -

CONTINUED from Page 4

Well, just what is the problem? Is it a shortage of personnel, the equipment or is it, they don't care?

This matter should be dealt with, for it concerns every student.

Delores Cleveland

PV Family Will Live and Serve in Dominican Repub.

Dr. James I. Kirkwood, professor of Soil Science at Prairie View A & M College, is a part of a team of eleven consultants representing Texas A & M University in a program of service to The Dominican Republic.

The group departed this week for Santo Domingo, where they will be stationed for the two-year period. The project is sponsored by The Agency for International Development (AID). Dr. Kirkwood, who will serve as a consultant in soil science, is accompanied by his wife, Jessie, and two children, Alledi Jan and Irvin Paul. Both Dr. and Mrs. Kirkwood prepared for their service by studying Spanish in a 16-week orientation course held at College Station.

Employed at Prairie View since 1953, Kirkwood is an active member of Alpha Phi Alpha Fraternity. His wife is a member of Alpha Phi Alpha Chapter of Zeta Phi Beta Sorority at Prairie View.

First coeducational college in the U. S. was Oberlin College founded in 1833 in Ohio.

Engineering School Enrollment is Highest

This fall's engineering enrollment at Prairie View A&M College is the highest in history. According to Dr. E. B. Evans, President, the current enrollment represents a 12.6% increase over the 1964 enrollment. Dean C. L. Wilson reports that the demand for engineers continues to increase. Graduates from the School of Engineering experience no difficulty in securing employment. Representatives of over one hundred major industrial concerns and governmental agencies visit the college

each year looking for engineering graduates. Beginning salaries for graduates with the B. S. degrees range from \$650 to \$700 per month, an increase of 7½% over 1964 salaries.

Americans have the best-fed garbage cans in the world. The average household in this country discards about 200 calories of edible food per day for each member of the family!

Freshmen Have Opinions About PV

by BARBARA LEWIS

Now that the first semester of this school year is almost over, I imagine that many freshmen have formed an opinion of our dear old institution as to whether it came up to their expectations of how college life would be. (That is to say, as related to classes, teachers, dress mannerism, and students in general.) After asking many freshmen students, here are some of the opinions that I came up with.

Robbie Johnson, freshman from Houston, Texas: "I didn't expect anything different from what it is. There are many more student activities than I had anticipated."

Glendell Wilkins, freshman from Jasper, Texas: "I like it down here. I don't care for the lecture methods used in some classes, but the dormitory life is wonderful. The fellows down here disappointed me though."

Linda Ware, a freshman from Beaumont, Texas: "I thought that I wouldn't like P. V., but now that I am down her, it is nice. I think that they could have more student activities."

Doris Johnson, freshman from Galveston: "Some parts of P. V. is just what I thought college would be like. I like living in the dormitories, but I think that they are too strict."

Florence Wilson, freshman from Fort Worth, Texas: "I didn't think that regulations were as strict as they are for girls. I thought that the dress mannerism would be different. I thought that the fellows would be a bit more mature."

Betty Gray, freshman from Beaumont: "The food is not as bad as I thought it would be. The rooms are too small for four girls."

Well, there you are. It seems that although there are some who down our school, many do agree that it is swell!!

FOCUS ON SOUTHEAST ASIA

by Lonnie D. Hunt, Jr., and Clyde Porter

A conference held on U. S. Foreign Policy at Texas A&M University

Last week, hundreds of distinguished Americans, many college students, politicians, professors, economists and others with personal knowledge of experience in Southeast Asia — met at Texas A&M University for a conference on one of the most pressing and controversial issues of the day, United States policy in Southeast Asia.

The conference looked over many problems of Southeast Asia, dating back to the scene of almost continuous change and crisis since the beginning of World War II. With the exception of Thailand, the countries in that region were ruled not so long ago by the great colonial powers of the West. The hold of France, Great Britain, the Netherlands, and the United States on their colonies was loosened by Japanese Army, which swept through Southeast Asia, occupying almost the entire region. Nevertheless, from the very beginning, all topics were somewhat approached in the light of the "why" of them, that the nature of the problem be found, for "how can you have a solution when you do not know the problem?"

The problems of Southeast Asia stems from two particularly difficult problems. The new

leaders who had taken over at the end of World War II, during the movement of independence, faced political immaturity of the people and the backwardness of the country's economy. A host



Hunt

Porter

of factors were influential, including the type of society, the colonial experience, and the education and orientation of their leaders. So naturally you can see nothing but a diversity form of government in Southeast Asia.

Perhaps your mind has already wondered astray, saying "Why did the U. S. get involved?" "What is our ultimate objective?" Our objectives are: To maintain security, improve living conditions, maintain internal stability, and prevent communist takeover everywhere except North Viet Nam.

Both the formal presentation of first hand knowledge by speakers and the more informal round-table discussion provided everlasting ideas. It was even more educational to see color movies concerning Southeast Asia and the problems they face economic-wise. There has been no substantial improvement in the situation since independence was gained. The annual average family income for the region as a whole is only about \$55. Poor clothing, inadequate housing and certainly the lack of food in the "bellies" of the people won't maintain good health.

Considering too, the population explosion in this part of the world, there's a decrease in food production which is offset by the increase of a vast number of mouths to feed.

Now we get to the real problem. The political immaturity of most Southeast Asia countries have created an instability which the communist have been quick to exploit. Nowhere else is this better illustrated than in South Vietnam where the United States is presently engaged in a desperate struggle for Communist takeover.

While South Vietnam poses the most urgent See FOCUS, Page 2



Map

Final Examination Schedule

MONDAY, JANUARY 17

Nat. Sci. 113, 123 — 8:00-10:00 Field House
Chemistry 114 — Classes — 8:00-10:00 As Announced by Instructor
Music 253 Classes — 8:00-10:00 Music Aud.
8:00 TTHS Classes — 10:00-12:00 Reg. Classroom
9:00 TTHS Classes — 3:00-5:00 Reg. Classroom
8:00 MWF Classes — 1:00-3:00 Reg. Classroom
All Pol. Sci. 113 Classes — 6:00-8:00 p.m. Field House

TUESDAY, JANUARY 18

Eng. 113, 123 Classes — 8:00-10:00 As Announced by Inst.
9:00 MWF Classes — 10:00-12:00 Reg. Classroom
11:00 MWF Classes — 1:00-3:00 Reg. Classroom
2:00 MWF Classes — 3:00-5:00 Reg. Classroom
All Pol. Sci. 123 Classes — 6:00-8:00 p.m. Field House

WEDNESDAY, JANUARY 19

All Soc. Sci. 113 Classes — 8:00-10:00 As Announced by Instructor
10:00 MWF Classes — 10:00-12:00 Reg. Classroom
11:00 TTHS Classes — 1:00-3:00 Reg. Classroom
All I. E. 111 Classes — 3:00-5:00 A. I. Aud.
All Geog. 163 Classes — 3:00-5:00 Field House
All G. E. III & Ag. Ed. 111 — 3:00-5:00 Reg. Classroom

THURSDAY, JANUARY 20

10:00 TTHS Classes — 8:00-10:00 Reg. Classroom
1:00 MWF Classes — 10:00-12:00 Reg. Classroom
3:00 MWF Class — 1:00-3:00 Reg. Classroom
All 12:00 Classes — 3:00-5:00 Reg. Classroom

FRIDAY, JANUARY 21

1:00 TTH Classes — 8:00-10:00 Reg. Classroom
All 3:00 TTH Classes — 10:00-12:00 Reg. Classroom
All 4:00 Classes — 1:00-3:00 Reg. Classroom
All 2:00 TTH Classes — 3:00-5:00 Reg. Classroom

SATURDAY, JANUARY 22

For Saturday Graduate Classes Only

8:00 Classes — 8:00-10:30 As Announced by Inst.
11:00 Classes — 11:00-1:00 As Announced by Inst.

ALL PHYSICAL EDUCATION PRACTICE EXAMINATIONS are scheduled Thursday evening from 6:00-8:00 a.m. January 20, as announced by instructors. All Military Science examinations are scheduled Wednesday, January 12, 1966 from 6:00-8:00 p.m. as announced by the Department. NOTE: All examinations are to be given at the time scheduled. In case of conflicts in the schedule, please notify the Registrar.

Pakistan's Contribution to Prairie View Is Mild-Mannered M. E. Professor

Pakistan's contribution to Prairie View is a mild-mannered man whose name has a musical sound - Mohammed Moinuddin Ansari. He comes to us directly from the University of Houston where he obtained his masters degree in mechanical engineering in 1963 and worked as an instructor from 1963 - 1965.

Mr. Ansari was born in Hyderabad Deccan which is located in the southern part of India. His collegiate career began at Osmania University which is located in Hyderabad. There in 1954 he earned a bachelor of science degree in physics with mathematics and chemistry as minors.

Hyderabad remained as an independent state after India was granted its independence. The population was predominantly Hindu, but the Muslims held most of the economic power and the ruling prince was a Muslim. However, in 1948 Hyderabad became a part of India and there was wide-spread discrimination against Muslims. India is predominantly Hindu so in December, 1954, the Ansari's moved to Pakistan which is predominantly Muslim. Mr. Ansari continued his education by attending Karachi University and in 1956 received a bachelor of teaching.

The Turkish government gave Mr. Ansari a scholarship as an exchange student in 1958. So Mr. Ansari was off to the Middle East Technical University in Ankara, Turkey. While he was there, he met the girl whom he later would marry. She was Ayse (eye'-she) Gedik whose home was in Izmir, Turkey. Miss Ged-



Mohammad Ansari

ik obtained a bachelor of arts degree in architecture and Mr. Ansari earned the bachelor of science degree in mechanical engineering in 1961.

Mr. Ansari then came to the University of Houston to begin work on his masters degree and in January, 1962, Miss Gedik went to New York City where she worked as an architect and attended Pratt Institute. Gedik and Ansari merged in December 1964, and now live in Houston.

After extensive travel in Europe, his favorite place is Vienna, Austria. He loves teaching and enjoys Prairie View because there is plenty of opportunity to work with the students.

Mr. Ansari is a welcome addition to Prairie View. He brings in a different perspective on many subjects that the native-born Americans seldom question. This means that the scope of the Prairie View student is being broadened.

A Look at Other Campuses

Students at A and T College, N. C. discovered a mail problem. The question of what was happening to the college mail was answered upon the inquiry of a few interested students. The answer was simply that the college postman was confined to his home because of illness for three weeks.

Approximately 20 per cent of 878 students at Tarleton State College enrolled in freshman mathematics courses had taken only one year of algebra in high school, a survey sought to determine what the background of mathematics in high schools was in that area and to see how it affected them.

Two thousand four hundred and seventy-nine University of Maine students and faculty members have signed a statement supporting the policy of the United States government in Viet Nam.

Rumors were circulated around the campus of Texas Southern University that the student council prexy had sent several clubs a letter informing them of his resignation. Sams set the rumor straight. He admitted that he sent a letter of resignation to administrative heads, but in lieu of the "overwhelming student support", he was literally obligated to withdraw his resignation and finish his term.

The Tuskegee Institute student body was upset over an administrative policy governing student activities. Students were told that the renowned "SUPREMES" would appear in \$2,000 in support money was raised. But, apparently they did not appear because too many

events were scheduled on the November calendar of events, said dean of student affairs.

Hobart Taylor, Jr., told a capacity-filled audience at South Carolina State College that the Negro must produce. The civil rights movement, he stated, is not comprised of sit-ins, stand-ins, wade-ins, etc., but also of the Poverty Program, Work-Study Program, Educational Opportunities Act, Civil Rights Act, and Voters Registration Act.

The question: Should Arlington State College de-emphasize competitive reports in order to concentrate on a higher academic program? One student commented: "I think the academic level is high enough. Now we should try to achieve athletic excellence."

The True Meaning Of Christmas

Originally Christmas was that time of year when we celebrated the birth of Christ. It was a joyous time of year when people brought gift for one another as a token of their love, just as the Wise Men brought gifts to the baby Jesus. It wasn't a matter of what the gift was but what it meant or the spirit in which it was given. Now it seems that Christmas has become a commercial venture.

We have taken a survey to reveal how the students of Pantherland feel about the Christmas season. The results are as follows:

BRENDA HAMILTON,

Freshman, Kountz — To me Christmas is a special time when everyone should be grateful for all of their many blessings, it is a time to share with others most dear to you, and it is also a time of fun and happiness and good cheer for everyone.

JUNE JORDAN, Freshman, Houston — To me, Christmas is a joyous occasion. A time for being with my family and giving thanks.

GEANETTA SHEP PARD, Sophomore, Bay City — A time of year when I'm more at peace than any other time. I'm thankful for being alive to enjoy Christmas, because with today's world situation we are all lucky to be alive.

MARGARETE WILKINS, Sophomore — Christmas is a time when love is shared, a time for giving thanks for all good things that God has bestowed upon us.

GWENDOLYN J. WILKERSON, Freshman, Houston — A time for eating, drinking, and being merry.

YVONNE WARE, Freshmen, Houston — Christmas is a time for party, party, party!

IDA TARVER, Freshman, Greenville — Christmas is a time of joy and happiness. It makes you think of Christ. It is a time of giving gifts from the heart to the ones you love and care for.

JOYCE M. MELEBECK, Sophomore, Orange — To me, Christmas means the giving and receiving of gifts. Bringing together of families in remembrance of the birth of Christ.

MARY ALYCE DENNIS RAGSTON, Hempstead, Senior — Christmas means looking for Mr. Santa Claus who has been away for quite some time. It means my stockings will be filled with joy.

ALBERTA MARIE ENGLISH, Houston, Senior—Christmas means gifts and good times. It means being with loved ones and being happy. It is the time of year when we pay special homage to Christ, and give thanks for our many blessings.

CAROLYN PAYTON, Senior, Livingston — To me, Christmas means good tidings, joy, and giving and receiving. I hope all fellow students will have a very good Christmas.

OLA J. SEXTON, Senior, Orange — Christmas means the birth of Christ.

ELLA RAE FIELDS, Senior, Waskom — To me, Christmas is a time for giving and a time for receiving. It is also a time for being thankful to God for being kind enough to spare us to see another Christmas.

BERNICE MILLER, Houston, Sophomore — When Christmas time rolls around every year, I think of the good as well as bad things that have happened to me. Its a time when I count my blessings and thank God for another year of life. I give gifts with feelings of pleasure and not just to receive them.

RUTHIE GATLIN — Christmas to me is the time of year that I'm filled with joyous songs, fruit cake and gallons and gallons of dinner wine. This is also the season that my pocket book is filled with plenty of empty space and unpaid lay-a-way stubs.

ARTHUR J. RADFORD — Christmas means to me the spirit of giving.

MARIO ARRIOLA — To me



FASHIONS

with MOLLIE

Since this is the holiday season and everyone is going out let's see what everyone is wearing.

Jackie Parham, an advanced sophomore from Cleveland, Texas, says when she goes out on New Year's Eve she is going to wear a black crepe bell-shaped dress, with a round neck, black sling back shoes with matching dark stockings.

Betty Flenoury, a junior from Livingston, Texas, will be seen on New Year's Eve in a light blue brocade dress, and matching blue shoes.

Amy Davis, a sophomore from LaMarque, Texas, will be seen on that fun-filled night in an off green velvet jumper with matching sling back heels with a scarf of red and off green for a dash of color. The jumper of course, is sleeveless.

Dorothy Wilborn, a junior elementary Education major from College Station, will brighten up the scene in a beautiful white silk suit with white shoes and accessories. She should look stunning.

Bernice Miller, a sophomore from Houston, Texas, will be seen entering the ball in a beautiful black and white formal, long black leather gloves and black suede shoes. I'm sure she will charm everyone at the ball.

Judy Lilly, a junior from Okmulgee, Oklahoma will be seen singing in the New Year in a beautiful red and white ensemble with matching shoes of red velvet.

But wait!! Let's see what the first lady of Pantherland will be wearing as she greets the New Year. Miss Tobartha McDowell will be wearing a matching black velvet evening coat. To accentuate her outfit she will wear long white leather gloves and black sling pumps. I am sure she will be beautiful.

Whatever you are planning to wear or planning to go, May God bless you in your ever endeavor, may your lives be filled with happiness, joy and love for your fellowman.

Your fashion reporter
Mollie Johnson

Scanning the Stacks

By: Roscoe Harrison

John Updike probably has the most acutely perceptive eye of any American novelist working today. This comes close to being his undoing. In his latest work, "Of the Farm", his eye sees not too wisely but too well. To look at the world through Updike's eyes is like looking through a high power microscope. What is revealed has the explosive ex-

citement that comes from viewing the familiar in a brilliantly unfamiliar way; but like the microscope, Updike's eye is impersonal, sometimes almost inhuman, and often seems to choose its object more by chance than choice. "Of the Farm" doesn't have much of a plot—a man with his new wife and her young son visits his mother for the weekend.

Christmas is a time to celebrate Jesus Christ's Birthday and should be celebrated by all. The children should be the only ones to receive gifts.

HAZEL WARREN — Christmas is a joyous occasion. To me, it means the bringing together of all family members to celebrate the birth of Christ through spiritual festivities. It is a time of plenty where peace and happiness prevails.

MAMIE SHERMAN—Christmas is that time of the year when pledgees trick up or dress up the doors.

JOHN WALTON — What does Christmas mean to me? A fifth of scotch, a cozy little room, and ME!! Does Christmas mean a tree? Of course not, you fool, Just a cozy little room, a fifth of scotch, And ME!!!

BLONZIE L. DELLEY — To me Christmas is a time when the family comes together, have prayer, share gifts, talk about old business and plan for the future.

IDA HALL — To me Christmas
See CHRISTMAS, Page 7

WYATT'S CHAPEL BAPTIST CHURCH

(Organized 1894)

Wyatt Chapel Road (1 Mile NW of Campus)
PRAIRIE VIEW, TEXAS

WELCOME STUDENTS, FACULTY AND FRIENDS

Pastoral Days 2nd and 4th Sundays

Sunday School 9:15 a.m. Each Sunday

Morning Worship 11:30 a.m.

Lord's Supper 2nd Sundays a.m.

Free Transportation to Church — Call UL 7-3230, UL 7-3533

Eli Thompson, Church Trustee

S. Stredick, Treasurer

Jessie M. Tompkins, Clerk

Rev. E. W. (Ed) McCullough — Pastor

CLUB CHATTER

LBL Talk

It is quite evident that the Christmas holidays are finally here — the whirlwind of Christmas parties, Christmas decorations, the cheery atmosphere, sincere greetings for the Christmas season and warm wishes for the New Year. And the Les Belles Lettres have not been left out.

After a very successful discussion of social graces by Mrs. Delia Mae Hunt, instructor in the Home Economics Department, the club is quite ready to set the example of social grace for the students of Pantherland.

The pledges are to be commended for their sincere effort in bringing and spreading Christmas cheer by decorating the door of each sister. They were also most successful in the wonderful Christmas program they presented at Sunday School, December 12.

While commending, we must congratulate our basketball team for their wonderful performances and team spirit during the three games of this week. LBL "will root for you" through the season.

The Les Belles Lettres Cultural Club extends to you and wishes you and yours the merriest Christmas and happiest and most prosperous New Year ever.

Bernadette Mosby
Reporter

Home Economics Chapter Blast-Off

The Prairie View chapter of A H E A is presently soliciting new members for its chapter. The newly elected officers for 1965-66 are: Grace Winston, president; Patricia Crockett, vice-president; Carolyn George, secretary; Maggie Cooper, asst. secretary; Margie Southall, treasurer. The sponsor is Mrs. D. C. Cooksey.

Saturday, November 13, the officers were accompanied by their sponsor to Houston, to the Kapan's famous Red Room where the American and Texas Home Economics Association's Regional meeting was held. The purpose of the meeting was to emphasize the role of home economics in our society today. The meeting was very informative and was enjoyed by all.

A freshman tea was held Thursday, December 16, in the social living center of the May Galloway Home Economics building for all freshmen home economics majors and majors in other areas of the school.

In the future the Prairie View chapter of AHEA will be presenting other activities that will help to build young ladies of today into better home economists of tomorrow.

Clemogene Garrett, reporter

Club 26

It's Christmas time, the season to be jolly, and the Thirteeners have led the way in making the presence of the yule-tide season known to all 26'ers. The door of every 26'er has been decked beautifully with every kind of Christmas cheer conceivable. The Thirteeners have planned for this Christmas to be an unforgettable one for the twenty-six ladies of the Black and White. The Thirteeners will

let you in on a few of the plans but most of them are the 13'ers secrets. The Thirteeners have planned to send cards to the 26'ers, give them Christmas gifts, give them a Christmas party, and to ... oops, almost forgot. Can't tell you that. It wouldn't be a surprise to the 26'ers if the secret was told. So, we had better keep it to ourselves.

Congratulations go to 13'er Lora Beasley for recently making Alpha Kappa Mu National Honorary Society. That's showing the campus just what 13'ers can do and do well.

Those of you who were fortunate enough to attend the Benefit dance sponsored by Club 26 and Club Crescendo truly can attest to the fact that the dance was definitely one of the most outstanding events of the year.

The 26'ers know that you will have the best Christmas ever. But to insure your having the best Christmas ever, try the 26'ers formula for a merry Christmas. The 26ers say: this Christmas, mend a quarrel. Seek out a forgotten friend. Dismiss suspicion, and replace it with trust. Write a love letter. Share some treasures. Give a soft answer. Manifest your loyalty in word and deed. Keep a promise. Find the time. Listen. Go to church. Be kind; be gentle. Laugh a little. Laugh a little more. Appreciate. Express your gratitude. Take pleasure in the beauty and wonder of the earth. Do these simple little things and the 26'ers guarantee you the best and merriest Christmas you have ever had.

Joyce Kyle, Reporter

Lufkin - PV

Hello fellow students. Everything will be swinging in Lufkin during the holidays. We are having a dance at the East Texas Cotton Club in Lufkin. This is one of our most fabulous affairs of the year. Of course everyone from everywhere will be there. So why don't you join the incrowd.

The members of the Lufkin P. V. club officers for the year are: President, F. J. Jenkins; Vice President, Odie Lindsey; Secretary, Lera Harper; Assistant Secretary, Estelle Traylor; Treasurer, Ernest Spikes; Business Manager, Percy Lindsey; and Reporter, Albert Buggs.

The Lufkin P. V. Club wishes all of Pantherland a very Merry Christmas and a Happy New Year! Enjoy yourself and remember the true meaning of Christmas, Love and Faith, which cannot be bought or sold only given away.

Reported by
Albert Buggs

Keeping clean is big business. Consumers have about 170 soap and detergent products from which to make their selections this year. Americans last year spent more than \$1.8 billion for soap and detergents, according to the latest consumer spending information. This averages out about \$10 a person — or approximately \$35 to \$40 for the average family. And most families tend to include this \$35 to \$40 in the "food" budgets — since most of the soaps and detergents are purchased at grocery stores.



Delightful . . . is the word when describing lovely sophomore co-ed Delores Ann Washington from Corpus Christi, Texas. Miss Washington is a Business Education major and a member of the Student Press Club.

Occupational outlooks for the next decade indicate greatest increases in demand will be for people in professional and technical fields, in jobs that generally require at least a bachelor's degree from college, reminds Mrs. Wanda B. Meyer, Extension home management specialist. Also needed will be more skilled craftsmen, clerical and sales workers, service workers and people for management jobs. These job projections come from the U. S. Department of Labor.

Southwest Cities Get Clubs Striving Toward 100 Members

The great southwest cities of Texas succeeded in organizing a hometown club under the heading of the Southwest-Prairie View Club. The purpose of the club is to foster greater cooperation, admiration and recreation between the Prairie View students of Victoria, Wharton, Matagorda, Brazoria, Ft. Bend, and Colorado counties and the surrounding areas. Already 60-strong, the Southwest-P.V. Club is striving toward its goal of 100 members.

At the initial meeting, the Southwest-P.V. Club chose Earnest Biggers as its president. Aiding him will be Beverly Thompson, vice-president; Patricia Edison, secretary; Darlene Mitchell, asst. secretary; Carol Gladney, treasurer; Willie Johnson, business manager; William Mitchell, parliamentarian; James Price and James Taylor, Sgt.-at-arms; and William J. Scott, Reporter.

The Club has also made a choice of Miss Margie Southall for Miss Southwest - Prairie View. Miss Southall is a sophomore, majoring in Home Economics. We are all happy and elated over Miss Southall being chosen to hold the title of this newly organized club.

The Southwest-P.V. Club gave its first social function in the Student Center Ballroom on

December 9. Hoping to spur our membership drive to greater heights, the Club plans another such mixer in the near future. So you Southwesterners who haven't identified yourselves yet, don't miss the next meeting. All new members are welcome!

William J. Scott, reporter

Christmas -

CONTINUED from Page 6

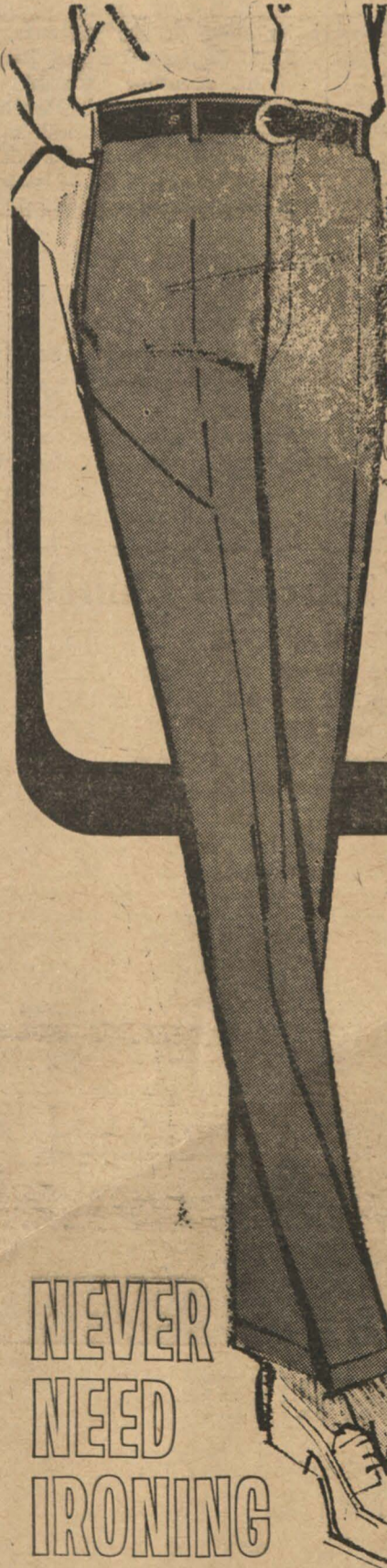

mas is a time for helping, giving, and sharing among your friends, the needy, the poor so that everyone may enjoy the happiness of a great day — Christmas.

ROSEMARY WALKER — Christmas means being at home with your love ones for a whole two weeks. Christmas is the happiest time of year when everyone seems to be at peace. Christmas is the time for giving, and also receiving. Christmas is the time of year to be thankful for what we have received through the year, and to thank Jesus for letting us see another Christmas.

AGNES ARMSTRONG — Christmas is the spirit of giving.


Reported by
Gwendolyn Jenkins
Joyce L. Hall

Traditional Favorites

at Colleges Everywhere

Farah Slacks have the neat, distinctively styled good looks college men prefer . . . permanently pressed in.



SLACKS, WALK SHORTS, JEANS
with
FaraPress™

**NEVER
NEED
IRONING**

FARAH MANUFACTURING CO., INC. EL PASO, TEXAS

SPORTS ROUNDUP

PV PANTHERS DOWN EAST TEXAS UNIVERSITY

The sharp-shooting of Capt.



Coach Nicks Inducted Into NAIA Hall of Fame

Five men, including two men still active in coaching, were inducted into the National Association of Intercollegiate Athletics (NAIA) Football Hall of Fame Saturday, December 11, at Augusta, Georgia.

"The honoring of the new men took place at the NAIA Hall of fame banquet following the NAIA Champion Bowl game between St. John's (Minn.) and Linfield (Ore.)," announced A. O. Duer, executive secretary of the NAIA.

The two coaches who were inducted into the NAIA Hall of Fame are: Clark Swisher, Northern State College, Aberdeen, S. D., and W. J. (Billy) Nicks, Prairie View A&M College, Prairie View, Texas.

The former players include David (Dode) Phillips, Erskine College, Due West (S. C.); Glenn (Slim) Campbell, Emporia State College (Kan.), and I. R. (Ike) Martin, William Jewel College, Liberty, Mo.

Ross Armstrong, Chadron State College, Chadron, Neb., has been elected to the Hall of Fame in the category of meritorious service.

Nicks was named NAIA Football Coach of the Year in 1963 after directing his team to the runnerup spot in the NAIA National Football Championship, losing to St. John's, 33-27.

He has been football coach and athletic director at Prairie View since 1945 and prior to that time was head football coach at Morris Brown (Ga.) for 15 years. His record at Prairie View includes 189 wins, 59 losses and 9 ties. He has coached eight Southwestern

Guy Manning and the outstanding rebounding of Sam McDonald led the Panthers to a 82-58 victory over the East Texas University Lions Monday night.

Manning hitting 59 per cent of his field goals and 6'9" rookie Sam McDonald kept the backboards clean as he pulled down 17 rebounds.

The first half was nip and tuck, but the relentless Panther defense lead by Alexander Durham proved to be too much for the Lions. This lead to a comfortable second half lead.

The young and spirited Panthers are proving to be a promising conference threat this year. The first conference game will be with Wiley College here on January 8.

L. Alex, 12 FGA, 4 FG, 6 FTA, 4 FT, 6 RB, 12TP, 56 season, 14 aver.

L. Durham, 8FGA, 3 FG, 1 FTA, 0 FT, 2 RB, 6 TU, 22 season, 5.5 aver.

G. Manning, 22 FGA, 13 FG, 11FTA, 7 FT, 13 RB, 33 TP, 117 season, *29.1 aver.

G. Williams, 2 FTA, 1FT, 2 RG, 1 TP, 23 season, 5.3 aver.

S. McDonald, 19 FGA, 6 FG, 3 FTA, 2 FT, *17 RB, 14 TP, 52 season, 13 aver.

O. Williams, 10 FGA, 5 FG, 4 FTA, 0 FT, 6 RB, 10 TP, 22 season, 5.5 aver.

D. Mitchell, 9 FGA, 2 FG, 4 FTA, 1 FT, 6 RB, 5 TP, 20 season, 10 aver.

Athletic Conference championship teams.

HEMPSTEAD ABSTRACT COMPANY

P. O. Box 72 Hempstead

Abstracts Title Insurance
Title Certificates

Phone VA 6-2481

Representing
Stewart Title Guaranty Co.

H. D. Voorhees, Owner

St. Francis' Episcopal Church

PRAIRIE VIEW, TEXAS

Sunday Services: 8:00 a.m. and 4:00 p.m.

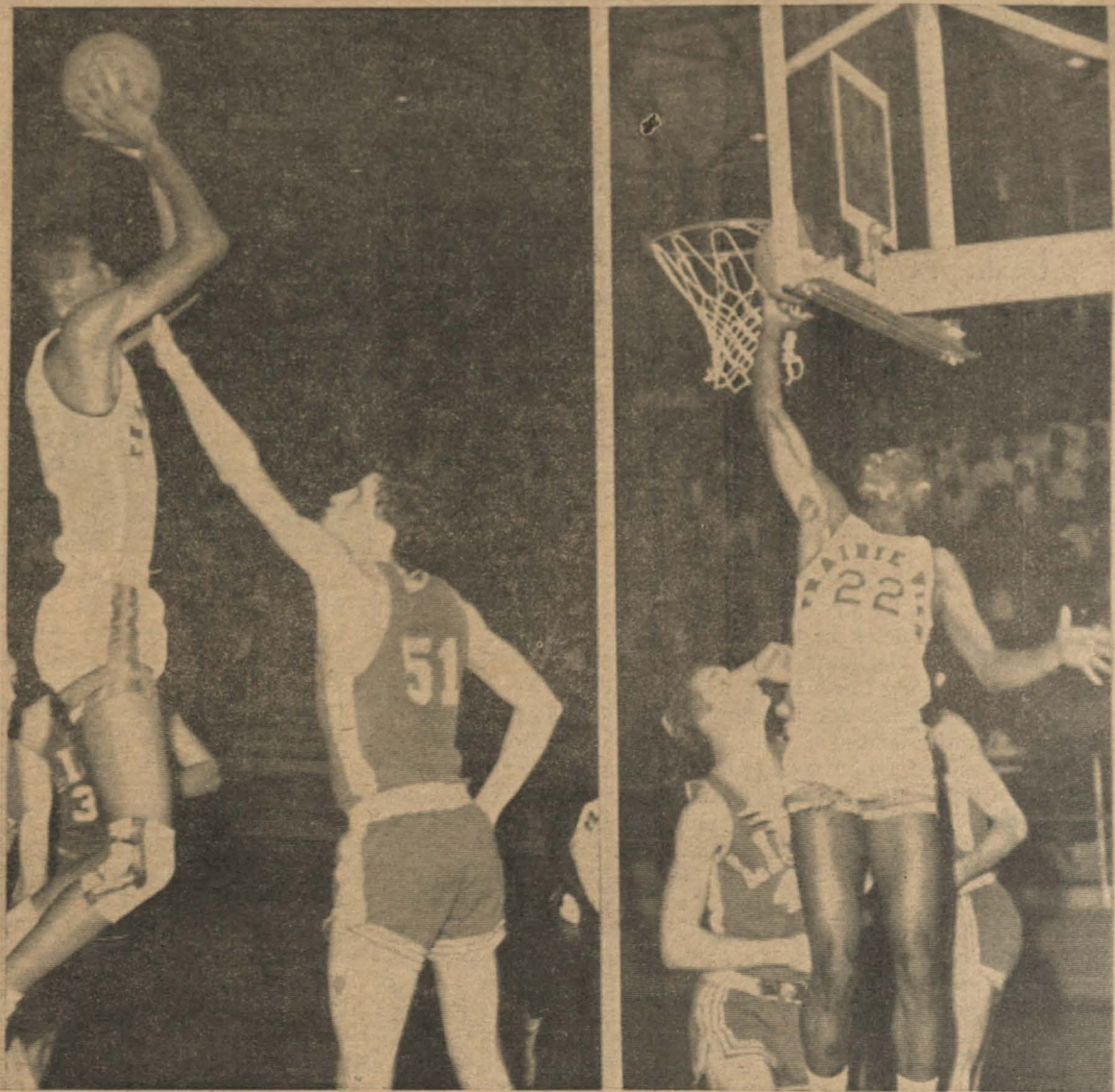
(Church School, grades 1-12, is at 9:30 a.m. in Rm. 122, Memorial Center)

Tuesdays: Canterbury Meeting, 5:30 p.m.

Wednesdays: 7:00 a.m. and 9:00 a.m.

YOU ARE ALWAYS WELCOME!

(If transportation is required, please call UL 7-3466 at least 30 minutes before the service.)



MOST POPULAR "FROSH"

— Samuel McDonald, freshman, 6'9" (forward) and the tallest Panther is considered by the Student Body as the most amazing player this year. "Lerch", as he is called by some of the students, is from Charlton-Pollard, Beaumont. Another "Frosh" — also on the court is Panther (pictured right) freshman, David Mitchell of Amarillo, who stands 6'5". Mitchell plays the center position.

PV BEATS HT 120-94

The Prairie View Panthers continued their winning streak Tuesday night, when they beat Houston-Tillotson College 120-94. Though the Panthers have not played a conference game, yet, they are well on their way to entering the competition for Basketball Conference Champs.

The ENGAGE-ABLES go for Keepsake®



Prices from \$100. to \$2500. Rings Enlarged to Show Beauty of Detail. © Trade-Mark Reg.



Each Keepsake setting is a masterpiece of design, reflecting the full brilliance and beauty of the center diamond . . . a perfect gem of flawless clarity, fine color and meticulous modern cut. The name, Keepsake, in the ring and on the tag is your assurance of fine quality. Your very personal Keepsake is now at your Keepsake Jeweler's store. Find him in the yellow pages under "Jewelers."



HOW TO PLAN YOUR ENGAGEMENT AND WEDDING

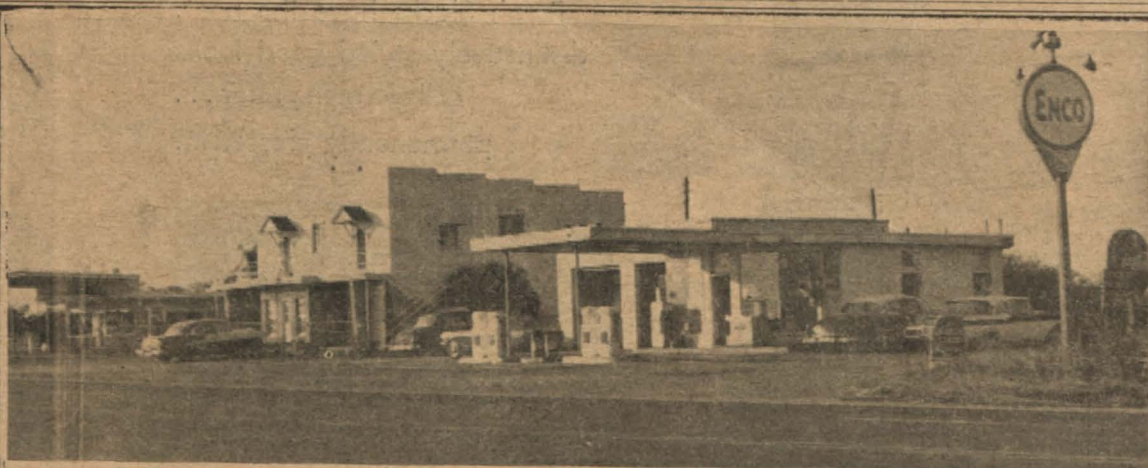
Please send new 20-page booklet, "How To Plan Your Engagement and Wedding" and new 12-page full color folder, both for only 25¢. Also, send special offer of beautiful 44-page Bride's Book.

Name _____

Address _____

City _____ State _____ Zip _____

KEEPSAKE DIAMOND RINGS, SYRACUSE, NEW YORK 13202



GABLESIDE ENTERPRISES

"You Will Like Our Friendly Service"

Jacob Boyer

H. R. Turner

E.M. Norris

Edgar Henry

Ted Lawson