

Prairie View A&M University

Digital Commons @PVAMU

---

PV Panther Newspapers

Publications

---

11-8-1991

## Panther - November 1991 - Vol. LXVIII, NO.20

Prairie View A&M University

Follow this and additional works at: <https://digitalcommons.pvamu.edu/pv-panther-newspapers>

---

### Recommended Citation

Prairie View A&M University. (1991). Panther - November 1991 - Vol. LXVIII, NO.20., *Vol. LXVIII, NO.20*  
Retrieved from <https://digitalcommons.pvamu.edu/pv-panther-newspapers/384>

This Book is brought to you for free and open access by the Publications at Digital Commons @PVAMU. It has been accepted for inclusion in PV Panther Newspapers by an authorized administrator of Digital Commons @PVAMU. For more information, please contact [hvkoshy@pvamu.edu](mailto:hvkoshy@pvamu.edu).





Music and Art Review



Lifestyles



Health Care Services

Newsweek



New Basketball Schedule

Sportsweek

# Prairie View The Panther

The Official Student Publication of Prairie View A&M University

Friday  
Nov. 8, 1991

Volume 68, No. 20  
Prairie View, Tx. 77446

## SpeakOut!

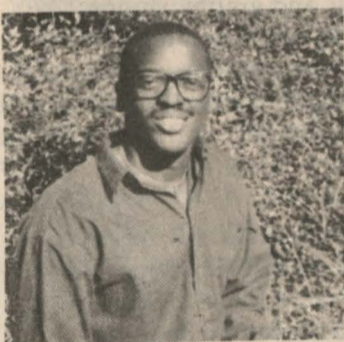
What do you think about Proposition 13?



**Kevin Martindale, Senior:** "I think Proposition 13 is a big help for students who need aid for school. Without loans many students would not have the chance they deserve to be in college."



**Vanessa White, Senior:** "I hope students will be able to get loans next year, because it is very important that everyone has a chance to further their education, and loans will help financially troubled students."



**Derek Jackson, Senior:** "Proposition 13 will give students who want to attend college a source of income. It would also show that Texas is serious about higher education for students."



**Arlita Jefferson, Freshman:** "I feel that Proposition 13 is important for all students especially since each semester the cost of college is rising. If we did not have this type of aid a lot of students would not be in school."

## '92 university budget reduced

University Release

The operating budget for the fiscal year 1992 was recently approved for PVAMU by the Texas A&M University System (TAMUS) Board of Regents.

Prairie View's budget was approved at \$58,035,242, down from last year's budget of \$63,632,620.

This reduction is due in part to the decrease in state funding for all state government agencies, including all TAMUS parts.

This budget figure includes state funding in addition to other income

sources, such as designated funds, auxiliary enterprises, and restricted funds.

"We will work hard to maintain quality education and services at Prairie View, but there will be an unavoidable impact from this budget reduction," said PVAMU President Julius W. Becton, Jr.

Becton added, "We will continue to pursue public and private gifts and grants through donor solicitation and through research."

He cited Prairie View's recent award of \$226,503 from the Advanced Research/Technology Program for three research pro-

jects.

Last year, PVAMU ranked 11th in available research funds among the 34 Texas public universities, and was one the 12 Texas public universities to receive over \$3 million in research funds.

Ed Davis, TAMUS Deputy Chancellor for Finance and Administration, said the system components will receive approximately \$11 million less for general operating expenses than last year.

He said, "Given the economic realities faced by the Legislature this year, all agencies of state government are seeing reductions in state support, and TAMUS is no different."

## Homecoming visitor charged with assaulting student

Michelle Johnson  
Co-Editor-In-Chief

The suspect in the stabbing of Corey Franklin on Tuesday has been charged with aggravated assault. Sidney Collins III allegedly stabbed Corey Franklin on the night of the talent show. Collins was enrolled last semester, but is not currently a student of Prairie View. He returned to PV for the Homecoming festivities.

It was rumored that the dispute was between persons from Houston and persons from Dallas.

Sergeant Knapp of the Prairie View police said, the actual reason for the stabbing has not been ascertained, but the rumor will be admitted into the case records for the courts consideration during the legal proceedings.

Franklin was admitted into the hospital and he was released in good to fair condition.

## Overtone of violence spoils this year's homecoming festivities

By Morenike Efuntade  
Staff Writer

Homecoming was supposed to be a time of fond memories and celebration for students and alumni. Unfortunately, this year's celebration was overshadowed by the fear of possible violence at Homecoming events.

One student, Corey Franklin, was stabbed during last Tuesday's Talent Show and required hospitalization. On Wednesday, University Police responded to a fight at the carnival during which a .32 caliber revolver fell out of someone's pocket. This prompted President Becton to cancel Thursday night's scheduled block party.

According to University Police Officer, Sergeant Knapp, there were more felony arrests in one day during Homecoming week than in the average month. Police officers recorded about 14 felony cases for the time period between October 28 and November 2. At least 12 of these offenses involved handguns.

A total of seven handguns were confiscated by police during Homecoming week. They included three 9 millimeter semi-automatics that were fully loaded and had the capability of firing 16 rounds, a .380 semi-automatic, a .25 caliber and a .32 caliber revolver.

The university police must have probable cause to search for weapons. All the weapons found during this time were responses to reports that weapons were sighted. According to Sgt. Knapp, "this would indicate that more guns are being brought on campus."

There were also at least seven burglaries or thefts that occurred. In one case, a student's vehicle and personal property was stolen at gunpoint

Are Prairie View students becoming more prone to violence? This is difficult to determine. However, several of the crimes committed were NOT committed by Prairie View students. The individual who stabbed Franklin was not an enrolled student at Prairie View, and the aggravated robbery was committed by 3 males who were not students either.

"I think that 90% of PV students are here to get an education. You have this 10% element that keeps stirring up trouble," explains Sgt. Knapp. Several people came to Prairie View's Homecoming to settle confrontations that had already been brewing.

According to Chief Stephens, 10 to 16 extra officers were brought each night, and they overlapped evening and night shifts. Stephens complained that student leaders were not willing to have enough officers at the events in the dome due to the costs of paying for their labor.

They only wanted 4 officers at the events, but Stephens explains that in order to properly protect the 900 people in the Baby dome, there needed to be 8 officers. Stephens explained that when confrontations break out there are not enough officers to handle the problem and to maintain security in other areas.

The violence that occurred during Homecoming week can be attributed to several things, including the use of alcohol, drugs and society's acceptance of use of violence as a means of solving problems.

Steps are being made by the University police and the administration to solve the problems on our campus. However, they both stress that students need to become involved in the crime solving process.

## A laughing matter



Martin Lawrence, stand-up comedian and actor thrilled the homecoming audience with his raw humor and comic delivery.

## Comedian featured at Homecoming Concert.

By Chandra Baty  
Newsweek Editor

The Baby Dome was filled with laughter as comedian Martin Lawrence displayed his 'raw' talent for humor at the homecoming concert on Saturday last.

Lawrence's brash, aggressive style shocked some concert goers and amused others as he spared no one in his hilarious imitations of love relationships.

The single, twenty-six-year-old comedian hails from Landover, Maryland, and got his start on the television program 'Star Search', and by performing stand-up comedy in night clubs.

Lawrence admits that he enjoys doing films, but stand-up is still his favorite. He only recently completed a concert tour as well as the sequel to the film House Party I, where he plays the character Bilal. In response to his experi-

ence working with rappers Kid n' Play, the stars of the movie, Martin says they are the same on-screen and off. Lawrence's screen debut was a minor role in Spike Lee's 'Do the Right Thing'.

He is currently working on a movie with actor/comedian Eddie Murphy as well as appearing in another film called 'Talkin Dirty After Dark'. He also plans to host a series of HBO specials at a later date.



# NEWS FRIDAY

## KEY DATES

- Nov. 11**  
Veteran's Day
- Nov. 14**  
International Food Day
- Nov. 22**  
Next Issue of *The Panther*

## FYI

The booming sound of a plane passing the sound barrier cannot be heard by the pilot.



In Copenhagen, Denmark, some brides rent wigs with tresses eight feet long to wear for their weddings.



During the construction of the Hoover Dam, concrete had to be poured continually for two years.

The tidal wave caused by the eruption of a volcano on the island of Krakatau in 1883 reached as far as England.

## Countdown

# 20

More days until  
Thanksgiving  
Vacation

## BRIEFLY

### NEWS

As a part of DOW Chemical's nationwide College Donor Awareness program, Dr. Clive Callender of Howard University's Hospital Transplant Center will make a presentation at Prairie View A&M University's John B. Coleman Library Public Events Room on Thursday, Nov. 14 at 3:00 p.m. Callender is known as the country's senior black transplant surgeon.

Callender's presentation, which will highlight Donor Awareness Week at PVAMU, is hosted by the Beta Beta Beta Biological Society and sponsored by Drs. Ronald Humphrey and Lee Henderson. The Tri-Beta president is biology student John Johnson.

Graduate fellowship programs sponsored by the U.S. Department of Energy and administered by Oak Ridge Associated Universities provide full payment of tuition and fees, monthly stipends, and the opportunity to gain practical experience at a DOE laboratory. Awards vary depending on the specific program and the degree being pursued.

All programs require the submission of a fellowship application and completion of the Graduate Records Examination (GRE). Students must have received their undergraduate degree in a science or engineering discipline by May/June 1991.

Selection is based on academic performance, recommendations, background, and a statement of career goals by applicant.

Fellowship applications are being taken through Jan 27, 1992 and awards will be announced in May 1992. For applications or additional information contact Sandra Johnson or Bridget Gross, ORAU Fellowship Programs, Oak Ridge Associated Universities, Science/Engineering Education Division, P.O. Box 117, Oak Ridge, TN 37831-0117, or call (615) 576-2600 or (615) 576-5803.

Academic advising is now offered for all Nursing majors on Tuesdays from 11:00 a.m. to 4:00 p.m. at the Academic Advising Center in W.R. Banks Bldg, room 215. Academic advisors are Associate Dean D. Brathwaite, Phd, RN and

Admissions Counselor R. Abrams. MHSM, RN. For more information call (409) 857-4613.

The next TASP Test will be administered at Prairie View A&M University on Saturday, Nov. 16, 1991 at 8:00 a.m. in W.R. Banks Classroom Building. The postmark deadline for regular registration is Friday October 18, 1991. Regular registration fee is \$26.00; late registration is an additional \$20.00. Registration bulletins are available in the lobby of W.R. Banks Classroom Building. Students who qualify for financial aid may be eligible for a TASP fee waiver. Obtain more information from financial aid counselors.

Applications for the 1992 Internship Program at the Chicago Botanic Garden are now available. The internship program offers college students and recent graduates a unique opportunity to experience a wide range of botanic garden operations.

Horticultural interns at the Botanic Garden rotate through different work areas every two weeks. Internship positions are available in three to twelve month increments and provide for a 40 hour week. Specialized internships are also available in horticultural therapy, conservation ecology, integrated pest management, graphic arts, and public relations.

For more information about the intern program write Cynthia Baker, intern coordinator, Chicago Botanic Garden, P.O. Box 400, Glencoe, Ill. 60022-0400.

## PEOPLE

**Melanie A. Ellis is the 1991-92 Senator for the Memorial Student Center and President of the Memorial Student Center Advisory Board. She is currently a senior majoring in fashion merchandise and design.**



MSC Senator Melanie A. Ellis

### THE PANTHER PRAIRIE VIEW A&M UNIVERSITY

**Co-Editors-In-Chief.....Roosevelt Huggins  
.....Michelle Johnson**  
**Newsweek Editor.....Chandra Baty**  
**Lifestyles Editor.....Omar D. Harris**  
**Advertising Manager.....Richard Griggs**  
**Copy Editor.....Roland Lemonius**  
**Photographer.....Shawn Wade**  
**.....Cedric Williams**  
**Advisors.....Penny Williams**  
**.....Louis Smith**

### Support Staff

**Marcus Branch, Morenike Efuntade, Robyn Ford, Tasha Griffin, Larry Hendrix, Calvin Hill, Danielle McClelland, Evangeline Mitchell, Sholunda Osby, Michael Scott, and Vanessa White.**

### EDITORIAL POLICY

The Panther is a bi-weekly publication supported through advertising and student activity fees. Views expressed in the Panther are not necessarily those of Prairie View A&M University or The Texas A&M Board of Regents.

The Panther will accept news submissions from campus organizations and individuals at Hilliard Hall 209 on or before 5pm on Fridays.

The Panther reserves the right to editorial discretion concerning publication of submitted items and photographs.

Advertising rates are as follows: Students - \$2/ column inch (CI); local - \$3.75/CI; Local Agency- \$4.15/CI; National - \$5.67/CI

Mail inquiries to : The Panther, PVAMU, PO Box 156, PV, Tx, 77446

## DEPARTMENTAL NEWS

### ARTS

The 1992 Houston International Festival, scheduled for April 23 through May 3 is now accepting applications for performing artists for the Festival's eight outdoor stages.

The 1992 celebration will salute the arts of Spain and the New World. Contact the Festival's Office at (713) 654-8808 for more information.

### COMMUNICATIONS

The *Washington Post* is offering twelve-week, paid reporting internships available on the metro, national, business, sports and style staffs. Internships are also available for students interested in copy editing, photography, and graphic design. For more information, write: Summer News Program; News Department, The *Washington Post*; 1150 15th street, N.W.; Washington, D.C. 20071-5508

### NURSING

There will be a reception for prospective Prairie View A&M University students and their parents at the Prairie View A&M Univ. College of Nursing, 6436 Fannin St. in the Houston Medical Center, on Saturday Nov. 9, from 10:00 a.m. - 1:00 p.m.

Prospective students will have a opportunity to talk with alumni, financial aid officers, and other university staff members. The reception is sponsored by the PVAMU Office of Admissions and Records and the PVAMU National Alumni Association. For more info., contact the Office of Admissions and Records at (409) 857-2626/2618.

## INTERNATIONAL STUDENT WEEK

November 10 - 15

- Nov. 10 Non-demoninational Service
- Nov. 10 All Faiths Chapel
- Nov. 11 Immigration Workshop
- Nov. 12 Events Day
- Nov. 13 International Fashion Day
- Nov. 14 International Food Day
- Nov. 15 Open Air Festival

More info: (409) 857-2217/2218



# NEWSWEEK

## Health center provides vital services

By Omar D. Harris  
Staff Writer

The Owens Franklin Health Center is one area of the campus we easily forget about until we have medical problems. The clinic however, is as vital a part of the campus as anything else. We should all have some knowledge about the services it has to offer.

Not only is the campus clinic for student usage, but it also serves as the health facility for the surrounding communities as well.

Previously, because of limited staff, they have not always been able to function to their optimum capacity.

Mrs. Thelma Pierre, a licensed counselor and administrator of the clinic, identified the services that are available to students. The Urgent Care Program provides emergency medical technicians (EMT's) and paramedics for emergencies after-hours.

The EMTs are for non life-threatening situations that are critical, while the paramedics deal with life threatening situations. These teams are available from 6:00 p.m. til 8:00 a.m. Monday thru Friday and all day on Satur-

days and Sundays.

In the event that a life-threatening situation occurs, there is a fee for paramedic service. A university dispatcher can be reached at 857-4823.

Prairie View students have access to health care 24 hours per day, seven days a week from 8:00 a.m. thru 6:00 p.m.

The clinic is equipped to treat accidents, injuries and ambulatory illnesses. According to Mrs. Pierre, 99% of the patients seen at the clinic are treated. She also stated that "Students by far and large do not have health insurance. It is a real crisis, for if there is something we cannot handle here, frequently that person may not get the service, because they do not have health insurance."

The Family Planning Program is a grant program, which receives funds from the government yearly. This program consistently loses money, because it operates on a fee scale. There is also an insufficient supply of contraceptives on a continuing basis.

The Sexually Transmitted Disease Program, operated by the state of Texas, works in conjunction with the Family Planning Program, but it is a

separate entity. This program is partially funded, which means that sometimes patients have to pay for their visit.

The student health service fee provides each student with six free visits and also reduces lab and medication cost.

The ADAPT (Alcohol and Drug Abuse Prevention Techniques) Program offers Alcoholics Anonymous, Narcotics Anonymous and Cocaine Anonymous programs. These programs are now operated by Darryl Williams and Dr. Marilyn Hamilton, who are specialists in these areas.

There is also an HIV/AIDS program, which provides counseling and testing. Counseling includes pre-and post-counseling. All testing is done by Mrs. Pierre and can be done anonymously. The clinic also provides counseling for victims of rape as well as victimizers.

Mrs. Pierre would like to start a Health Care Advisory Program by taking two interested representatives from each classification. Interested persons may contact Mrs. Pierre at 857-2511.

## Repeat offenders remain on-campus unless students press charges

Michelle Johnson  
Co-Editor-In-Chief

Eleven repeat offenders are walking around on Prairie View's campus with a total of 43 offenses among them. At press time one had been suspended and two are being processed for suspension.

President Becton said the reason why most of the offenders are still at Prairie View is because students won't press charges against them.

Some of the crimes committed involve concealed weapons such as switch blades, Rambo knives, 9-mm semi-automatic guns, billiclubs, sticks and chains; all of these have been found on Prairie View's campus since the beginning of the Fall semester.

The Prairie View Police confiscated those items both on calls through the dispatch and with the random selection of room searches conducted by the office of Student Life. It is against school policy and the law for weapons, drugs and alcohol to be on campus.

Illegal possession of a weapon is a third degree felony because Prairie View is an educational institution.

Many of the persons caught have been charged, but the conviction rate has not yet been computed.

The administration is sending a message to all would be perpetrators that crimes will not be tolerated.

During the month of October there have been 51 referrals and 31 cases. Referrals are calls claiming disturbances in the area and cases

are the referrals that have legal cause to charge someone with an offense.

On campus the large amount of weapons can possibly be attributed to the increase in students possessing weapons and using them,

said Sergeant Knapp of the Prairie View police.

Sergeant Knapp believes that 90 percent of the students here at PV are here for an education, but it's the other 10 percent who are causing problems, who should be removed.

## Continue the struggle

### Convocation speaker urges students to establish relationships for success.

By Chandra Baty  
Newsweek Editor

Prairie View alumnus, Retired Colonel, Howard Daniel encouraged students to continue the struggle and achieve success. Daniel was the featured speaker at the annual Homecoming Convocation on October 31.

He defined success as being the ability to establish relationships and gave four basic types of relationships for success.

Daniel further explained that the inward relationship is how you relate to yourself

and that the upward relationship is how you relate to those that are responsible for you.

In reference to the downward relationship, Daniel urged the audience not to elaborate on the negative aspects of Prairie View and not to "criticize the team you are a part of." Lastly, the outward relationship shows how you relate to those around you.

Daniel graduated from Prairie View A&M with a Bachelor of Science degree and returned to the Army commissioned as a second lieutenant. He served in Vietnam and acquired his Master's degree at Kansas State University.

Currently, he is the president and owner of Personal Development Specialist Company, teaches at seminars and gives motivational speeches on various subjects.

Student Government President Kahlil Yarborough addressed the recent violence during homecoming week. He requested an end to violence on campus and asked everyone to do their part to prevent the recurrence of violence.

Prairie View talents such as the Baptist Student Movement performed, and Miss Prairie View 1991-1992 Elizabeth Vaughn was on hand to formally introduce the speaker.

## Soviet professor speaks on new developments in Russia

By Staff

Most Russian people would faint if they saw an American supermarket, according to Dr. Olga Selivanova, visiting professor from Texas A&M University.

Dr. Selivanova was guest speaker at a special seminar, Oct. 29, sponsored by the College of Business.

Speaking on recent developments in the Soviet Union, she said we have probably all seen reports in the American media about nearly empty stores in Russia and people standing in long lines to buy goods.

This persists, she said, because production has been controlled by a central planning committee according to socialists command economy for so many years, supply cannot catch up with demand.

Recent political changes led to experimentation with a market economy but consumer goods are not yet plentiful because government control

of production created monopolies which never operated to full capacity.

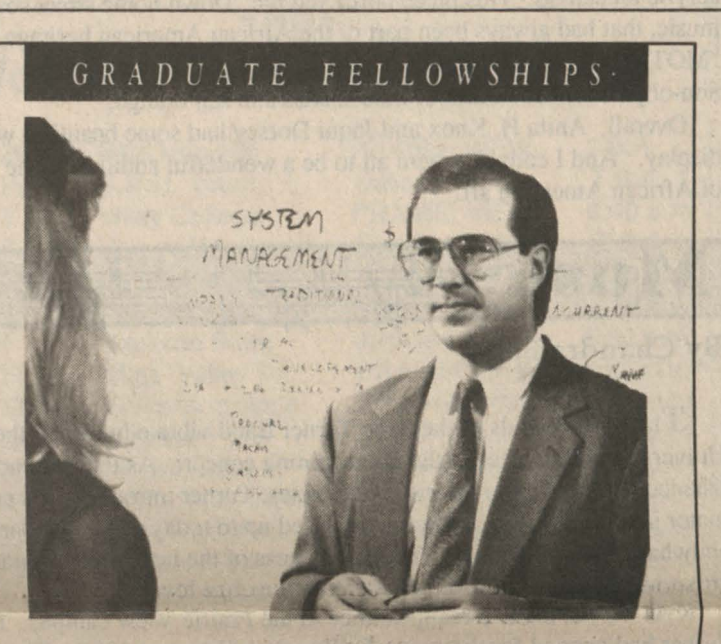
The transformation to a market economy will take years, according to Dr. Selivanova. She says there is no mechanism to raise productivity. The people are not used to recycling profits for expansion.

"Russia is not used to free enterprise. The country has gone from serfdom to communism so there is no mentality for individual enterprise, individual initiative or decision-making," she said.

However, she said the development of new parties shows the people allow trained market economists to plan its future or revert to political loyalties where party officials control business, she proposed.

The implications for the West remain tentative, she explained, until the union settles its political difficulties.

See page 5.



**"I'M LEARNING ABOUT TECHNOLOGY FROM THE PEOPLE WHO ACTUALLY DEVELOP IT."**

Jose Carrillo, Manufacturing Engineer  
Northrop Fellowship Recipient

"At Northrop, I'm able to meet and talk with the engineers and scientists who are the authors of cutting-edge technology. And I get involved in this creative process."

We're always looking for graduates eager to apply their creative minds to advanced technology in Engineering, Computer Science and Manufacturing.

As a Fellowship recipient, you'll earn a salary, a wide range of employee benefits and a generous yearly stipend. Our work/study program covers books, fees and tuition.

Northrop is a leader in developing a wide range of commercial and defense aerospace and electronic products, stealth technology and innovative manufacturing processes.

So look into Northrop's Graduate Fellowship program. Please contact Northrop Corporation, Staffing & College Relations Fellowship Program, 138/CC, Dept. CN1191, 1840 Century Park East, Los Angeles, CA 90067. BOE M/F/H/V. U.S. Citizenship required.

*People Making Advanced Technology Work*  
**NORTHROP**

**Do You Want VISA & MasterCard Credit Cards?**

**REGARDLESS OF CREDIT EXPERIENCE**

**WAL SERVICES, INC.**

**VISA**

**AL SERVICES, INC.**

**MasterCard**

Now you can have two of the most recognized and accepted credit cards in the world...Visa® and MasterCard® credit cards...**IN YOUR NAME.** EVEN IF YOU ARE NEW IN CREDIT or HAVE BEEN TURNED DOWN BEFORE!

VISA® and MasterCard® the credit cards you deserve and need for—**ID—BOOKS—DEPARTMENT STORES—TUITION—ENTERTAINMENT—EMERGENCY CASH—TICKETS—RESTAURANTS—HOTELS—MOTELS—GAS—CAR RENTALS—REPAIRS—AND TO BUILD YOUR CREDIT RATING!**

**GUARANTEED!**  
VISA/MASTERCARD  
GUARANTEED ISSUE  
OR MONEY BACK

Approval absolutely guaranteed so.

**MAIL THIS NO RISK COUPON TODAY**

**STUDENT SERVICES, PO. BOX 2596, HOLLYWOOD, FL 33022**

**YES!** I want VISA®/MASTERCARD® Credit Cards. Enclosed find \$15 which is 100% refundable if not approved immediately.

NAME \_\_\_\_\_

ADDRESS \_\_\_\_\_

CITY \_\_\_\_\_ STATE \_\_\_\_\_ ZIP \_\_\_\_\_

PHONE \_\_\_\_\_ S.S.# \_\_\_\_\_

SIGNATURE \_\_\_\_\_

NOTE: MasterCard is a registered trademark of MasterCard International, Inc. Visa is a registered trademark of VISA USA, Inc. and VISA International Service Association.

**100% GUARANTEED!**



# LIFESTYLES

## REVIEWS

### ART

by Brian Warner

The art exhibit entitled "Family and Fun: A Loving Tradition," was on display at the John B. Coleman Library through November 7. Featured were the works of Jacqui Dorsey and Anita H. Knox.

In the work of Jacqui Dorsey, she had eleven exquisite oil paintings on display, that reflected the life essence of the African American family. Her art works symbolized in many forms the family traditions and new black attitudes among our young and old.

The titled explanations next to her paintings says it all, for example the piece called "SHORTNING BREAD," states

"Like so many black families we look forward to sweets every Sunday after dinner." Truly a black experience. Also in the piece entitled, "I'LL DO IT ALL OVER AGAIN," which showed a senior couple embracing, it said "A 50 year old marriage is truly an example of the strengths of ones love and commitment." All of Dorsey's paintings were sort of like portraits, and were very beautifully rendered in her own unique style.

Anita H. Knox had eight pieces of work on display, three of them were some of the most interesting traditional hand-made quilts I've seen in a while. The intricate patterns and details were just fabulous. Next to the quilt titled "ROOTS AND TRADITION," it said "Many hand-made quilts tell the story of ones heritage." The other two were entitled "A FLOWERING OF MY SOUL," and "IT GOES WITH THE TERRITORY."

Knox's work showed more variety than Dorseys. For example Knox had a piece called "STREET SOUNDS," which was done in glass and acrylic on canvas. This piece portrayed the "Down home street sounds in music, that had always been part of the African American heritage." "MOTHERS LOVE," was done in stained glass. This piece was non-objective, with a mix of blue shades and sap orange.

Overall, Anita H. Knox and Jacqui Dorsey had some beautiful work on display. And I consider them all to be a wonderful addition to the world of African American art.

### Music

By Chandra Baty

The jazzy sounds of the Kyle Turner Band vibrated through the University Fieldhouse for the homecoming concert. As the audience listened and relaxed to their smooth notes, Turner introduced his new material. His freshly written work lived up to today's jazz standards and what defines the music. The uniqueness of the new contemporary jazz group will surely establish their style among jazz lovers.

Kyle Turner made a reappearance to the Prairie View campus. Kyle Turner had opened for the group En Touch in February 1990. The native Houstonian played in the band at Jackson State and Texas Southern. He also gained experience by performing in public schools. After touring with soul singer Luther Vandross and appearing in one of his videos, he formed his own contemporary jazz group two years ago. They established a home base in Austin, Texas and reside in that area. All the group members are native Houstonians except for one that comes from San Antonio, Texas.

The mellow group has performed with artists such as Gerald Albright, Natalie Cole and Kim Waters. The group plans to release their first album in the spring. Their objective is to have their music reach all people. Their sound is fresh and pleasing to the ear. Once their album is released and their music is recognized, the rest will come naturally.

## Talent show a success despite stabbing incident

By Evangeline Mitchell  
Staff Writer

The Baby Dome was almost filled to capacity as students came to set their homecoming out and be entertained by PV's talented new acts.

Performers competed in various categories including rap, dance, vocal, vocal group and comedy. The acts were judged on style, creativity, talent and star potential.

Infinity, a female quintet, won first place with their vocal rendition of "Giving Him Something He Can Feel." Six Feet Deep, an upbeat dance trio won second place and Albert Fulton, a male vocalist sang "If Only For One Night" and placed third.

The winners received a total of \$400 in cash prizes.

During the intermission, the crowd was dazzled by the new male group Eclipse, who performed the prelude

to Jodeci's "Forever My Lady", leading into High Five's "I Can't Wait Another

Minute". So impressive was their rendition that they received a standing ovation.

The crowd seemed to be thoroughly enjoying themselves as the proceedings took on an atmosphere reminiscent of the 'Showtime at the Apollo' television program.

Sadly, this exciting evening of fun and entertainment was spoiled by a sobering announcement just before the results were given, whereby a male student had been stabbed over a dispute.

After the show was over, many students gathered outside the dome out of curiosity and concern, to see the injured student taken off in the ambulance.

Even though many students attended the talent show to enjoy themselves and forget about their problems, most walked away disappointed and upset by the latest crime incident. The incident not only made students face the reality of violence on campus, but it also started the Homecoming festivities on a sour note.

## DOE graduate fellowships available

Press Release

Graduate fellowships are available for entering and first-year graduate students majoring in science disciplines and who are also interested in pursuing research careers in areas pertaining to global change.

Sponsored by the U.S. Department of Energy (DOE) and administered by Oak Ridge Associated Universities, the Graduate Fellowships in Global Change Program includes full payment of tuition and fees at a DOE-approved institution, a \$1,200 monthly stipend, and a three-month

practicum assignment at a DOE facility or research center associated with the Committee on Earth and Environmental Sciences.

The application deadline is January 31, 1992, and awards will be announced in May 1992.

For application forms or more information contact Sandra Beaulieu, Graduate Fellowships in Global Change Program, Oak Ridge Associated Universities, Science/Engineering Education Division, P.O. Box 117, Oak Ridge, TN 37831-0117, or call (615) 576-7393.

## Drug and alcohol counselor joins health center staff

By Mona S. Smith  
Staff Writer

The newest staff member at the Owens Franklin Health Center, Darryal A. Williams was hired in September as a drug and alcohol abuse counselor for students.

Williams attended the Cadwallers Behavioral School in Houston and the Johnson Institute on Intervention in Chicago, Illinois.

He is the director of the drug abuse program at Windsor Village Methodist Church in Houston and is also the founder of Williams Resources, a company designed to offer assistance, information, and counseling to individuals and families with drug and alcohol dependency or abuse.

Alcoholism and drug abuse has affected Williams himself. He is a recovering alcoholic and drug addict and has been sober for 5 years and 4 months.

Williams is aware of the problems that some college students face concerning

peer pressure. His past experience has given him the desire to counsel and help others to overcome their problems, whether it is peer pressure, drugs, or alcoholism.

Williams is a positive black role model who strives to assist individuals with a lack of self-confidence and self-esteem. He urges Prairie View students to discontinue the use of alcohol and drugs. He is willing to counsel explain, and teach the student body the deadly effects these substances can cause to the body.

Williams' ultimate goal for Prairie View is to host a cocaine anonymous meeting here on campus. He is available to speak to classes and hold seminars concerning this problem.

If you have any questions regarding this issue or if you would like to make an appointment, Mr. Williams may be reached at the health center on Tuesdays and Thursdays.

## Fraternities and sororities display their talents during homecoming

By Omar D. Harris  
Lifestyles Editor

For two consecutive nights during homecoming, members of the Greek and non-Greek organizations once again stepped, stomped and strutted their way into our hearts.

The platform shook with their competitive efforts as they delighted us by masterfully executing intricately choreographed moves and displaying their cane twirling talents.

Crowds of spectators flocked to both events, some even traveling from as far as Beaumont and Austin to participate.

First to compete at the non-greek show was Kappa Kappa Psi from Texas Southern University, receiving much support from their fellow sorors and 'frat' brothers at Prairie View. These TSU students showed us that they could not only formate well but harmonize too.

Next, the Alpha Phi Omegas displayed their colors with their faces painted blue and gold to win third place overall.

Club Chic, sisters to the Crescendo's, won first place with their genie suits and talented moves.

During the intermission, the crowd was entertained with the smooth dance moves of 'Ice Cold Part II'.

The second half of the show began with Prairie View's own Karnation Kourt Inc.. Dressed in red and white they moved to the latest music and twirled their 'candy canes' to the latest beats.

Next were the Alpha Angels in their bold black and gold, escorted onstage by the greek men of Alpha Phi Alpha.

Bringing everything to a close, were the Classy Gentlemen who were quite creative in holding everyone's attention with several acts combined into one. They went on to win second overall.

On Friday night the greeks did their thing, and most greeks were in attendance whether or not they performed.

PV's Alpha Kappa Alpha members were well in attendance as well as those visiting from the University of Houston, Texas Southern University.

Those intelligent men of Alpha Phi Alpha were also in abundance, joining those here at PV, were members visiting from the University of Texas in Austin, and from the University of Houston.

The men of Kappa Alpha Psi performed outstandingly with canes, members from Lamar University in Beaumont, TX. and the University of Texas also performed.

Last but certainly not least were the fine ladies of Sigma Gamma Rho.

In the ladies division PV's AKAs won first place, second place was won by the Univ. of TX., and third place was won by the Sigma Gamma Rho's.

In the mens division the Alpha's took over, with the Alphas from Univ. of TX held the first place rank, along with PV's Alphas coming in second and the Alphas from the University of Houston, in third place.

## Fashion revue goes retro, highlights styles of the 50's and 60's

By Vanessa White  
Staff Writer

The annual homecoming fashion show paid tribute to the 50's and 60's, with an array of dazzling outfits and musical selections that were in style during that period.

The emcees were Raquel Young, Tony Atwood, Arnette Porter, and Cedric Williams.

which despite being part of the current 90's style, are very similar to those of the earlier years.

Vocal groups, Infinity and Eclipse, entertained the crowd between the fashion scenes.

Choreographer/producer, George Smith was largely responsible for the success of the homecoming fashion



"Coco" is the center of attention as Malcom Miles (L.) and Ron Washington (R) try to make a "move".

Among the articles of clothing presented in the revue's six categories were wigs, mini skirts, body suits, cat suits, bell bottoms, and daisy duke shorts, which the female models elegantly displayed to the enthusiastic audience.

The men followed wearing blazers, leather jackets, suspenders, ties, and slacks,

show, with the help of the consultants, managers, assistants, designers, and the director, as well as the numerous supporters and the 35 models who thrilled the crowd with their talents.

This year's show was definitely "A Family Affair, a tribute to the 50's and 60's with a 90's swing."

Advertise in *The Panther*

## DRESS FOR SUCCESS



As a Navy officer, pride and professionalism come with the territory. You also develop the potential to master the leadership abilities that guarantee success. In operations and management, in scientific and technical fields, you work with highly talented men and women committed to being the best.

You'll get a solid starting salary and additional allowances that add even more to your income. Plus, you'll get benefits like free medical and dental care, 30-days paid vacation each year, and opportunities for postgraduate education.

To qualify, you must be a U.S. citizen no more than 28 years old, have a BA or BS degree, and pass an aptitude test and physical exam. Seize a leadership opportunity that's sure to make a difference to your successful future. Call Navy Management Programs:

Call Collect:  
713-953-5974

**NAVY OFFICER** You and the Navy. Full Speed Ahead.

20 Days Until Thanksgiving



# SPORTSWEEK

## Basketball teams preparing for a more successful season

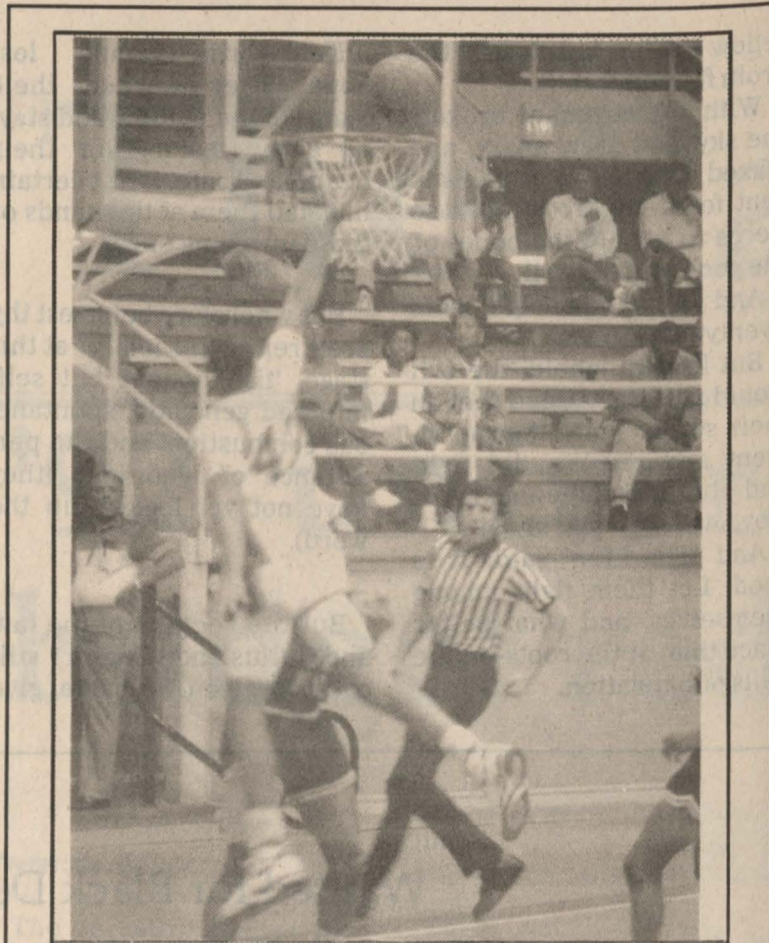
By Roosevelt Huggins  
Co-Editor-In-Chief

The men's and women's basketball teams will aspire to lofty goals as they begin their respective seasons in late November. Both teams will try to bounce back from the previously disappointing seasons.

After a 1990-91 season record of 4-21, the men's basketball team is determined to gain respectability for themselves. According to second-year coach Elmwood Plummer, "The team feels that they have to create a winning attitude for the university." The overall attitude of the team is that they can achieve a NCAA bid through hard work.

To achieve a "post season birth", Coach Plummer has employed an "up-tempo" offense with the emphasis on the fast break. Analyzing last season performance, the Panthers were able to score well with this type of offense. In fact, they scored over 100 points against top Division I basketball programs.

On defense, the Panthers are planning to concentrate on position rebounding. According to Coach Plummer, the Panthers' weaknesses last season



Panthers plan to score many fast break points during the 1991-92 season.

included defensive work and rebounding.

In order for the Panthers to have a successful season, they will depend on returners Robert Jordan (Sr. 6-3 G), Daryl Pope (Sr. 6-5 F), and Deon Samuels (Sr. 6-0 G). Jordan and Pope were both in the top five in team scoring last

season. To offset the void left by Michael Irvin, Terry Bryant, and Lorenzo Tolbert. Coach Plummer will depend on the efforts of Culumber Ball (Jr. 6-4 G), Jeffrey Boggas (Jr. 6-6 F), Chauncey Howard (Sr. 6-9 C), and Jeffrey Junigan (Sr. 6-8 C). Coach Plummer explained

that the key to the Panthers' success will be determined if they win on the road, while also winning the "big" games at home.

After last season's 5-21 mark, the Lady Panthers are anxious to begin a new campaign. Coach Atkins will have an inexperienced team as only five members return from the 1990-91 squad.

Coach Atkins plans to rely heavily on Pantrina Baker (Sr. 5-8 G), Nicole Green (Jr. 5-7 G), Roslyn Reed (Sr. 5-7 G) and Denese Scott (Jr. 6-1 C). As the players improve during the season, the lady panthers should have a strong program.

With the Lady Panthers returning few players, Coach Atkins has filled the void with entering freshman. Most notable is Christina Dixon (Fr. 5-3 G) who Atkins predicts as "the superstar of the future."

The Lady Panthers plan to use a motion offense combined with multiple defenses to confuse opponents. Only time will tell as they face predicted SWAC champions of Grambling and Jackson State. Overall, both programs should insure excitement during the 1991-92 seasons.

### 1991 Men's Basketball Schedule

Nov. 22	Marquette Univ.	Milwaukee, WI	7:30 p.m.
Nov. 25	Texas A&M Univ.	College Station, TX	7:30 p.m.
Nov. 27	Tulane Univ.	New Orleans, LA	7:30 p.m.
Nov 29-30	S.W. Louisiana	Lafayette, LA	TBA
Dec. 2	Rice Univ.	PRAIRIE VIEW	7:30 p.m.
Dec. 3	Univ of Alabama @ Birmingham	Birmingham, AL	7:30 p.m.
Dec. 6-7	Purdue Univ. Tournament	Lafayette, IN	TBA
Jan. 4	*Alabama State	Montgomery, AL	7:30 p.m.
Jan. 6	*Jackson State	Jackson, MS	7:30 p.m.
Jan. 11	*Miss. Valley St.	PRAIRIE VIEW	7:30 p.m.
Jan. 13	*Grambling State	PRAIRIE VIEW	7:30 p.m.
Jan. 16	Oral Roberts Univ.	PRAIRIE VIEW	7:30 p.m.
Jan. 18	*Southern Univ.	Baton Rouge, LA	7:30 p.m.
Jan. 20	*Alcorn State Univ.	Lorman, MS.	7:30 p.m.
Jan. 23	Univ. of Arkansas @ Little Rock	PRAIRIE VIEW	7:30p.m.
Jan. 25	*Texas Southern	PRAIRIE VIEW	7:30p.m.
Jan. 30	Oral Roberts Univ.	Tulsa, OK	7:30 p.m.
Feb. 1	*Alabama State	PRAIRIE VIEW	7:30 p.m.
Feb. 3	*Jackson State	PRAIRIE VIEW	7:30 p.m.
Feb. 8	*Miss. Valley St.	Itta Bena, MS	7:30 p.m.
Feb. 10	*Grambling State	Grambling, LA	7:30 p.m.
Feb. 13	Univ of Arkansas @ Little Rock	Little Rock, AR	7:30 p.m.
Feb. 15	*Southern Univ	PRAIRIE VIEW	7:30 p.m.
Feb. 17	*Alcorn State	PRAIRIE VIEW	7:30 p.m.
Feb. 22	*Texas Southern	Houston, TX	7:30 p.m.

### 1991 Women's Basketball Schedule

Nov. 26	Sam Houston	PRAIRIE VIEW	T.B.A.
Nov. 29	S.M.U. Tourn.	Dallas, TX	T.B.A.
Dec. 3	Wiley College	PRAIRIE VIEW	6:00 p.m.
Dec. 6	Univ of Houston	Houston, TX	T.B.A.
Dec. 14	Oklahoma Univ.	Norman, OK	7:30 p.m.
Jan. 4	*Alabama State	Montgomery, AL	5:30 p.m.
Jan. 6	*Jackson State	Jackson, MS	5:30 p.m.
Jan. 11	*Miss. Valley St.	PRAIRIE VIEW	5:30 p.m.
Jan. 13	*Grambling State	PRAIRIE VIEW	5:30 p.m.
Jan. 18	*Southern Univ.	Baton Rouge, LA	5:30 p.m.
Jan. 20	*Alcorn State	Lorman, MS	5:30 p.m.
Jan. 23	Oklahoma Univ.	PRAIRIE VIEW	7:00 p.m.
Jan. 25	*Texas Southern	PRAIRIE VIEW	5:30 p.m.
Jan. 27	Pan American	PRAIRIE VIEW	4:30 p.m.
Jan. 30	Wiley College	Marshall, TX	6:00 p.m.

# KPVU launches annual radiothon

By Devonya Smith  
Staff Writer

The original 91.3 FM (KPVU), Prairie View's own broadcasting station, kicks off its second annual Radiothon on Sunday, November 10-17.

This month marks the station's 10th anniversary, and all students, faculty, and the public are cordially invited to attend this Sunday's "Praise Service" which will be broadcast live from the All Faiths Chapel at 3 p.m..

Many KPVU personnel will

be present, including General Manager Dr. Lori Gray, Mrs. Carol Campbell, development and promotions coordinator, and Mr. Larry Coleman, the program director.

A membership drive, the brainchild of Dr. Gray, should provide the radio station with some of the necessary operational funds. Dr. Gray explained that "The key to the station's success is the listeners."

Beginning Sunday, listeners will have access to a 1-800 number so that they can make monetary pledges. By pledg-

ing a minimum of \$25 persons may become a member of the KPVU family for a year.

When Dr. Gray joined the station in 1988, the operating budget was nonexistent, she was then faced with the task of making the station, located in Hillard Hall, self-supporting within five years.

She implemented two successful programs to generate revenue: the biannual membership drive, usually held in March and October, and an Underwriting program for advertisers, which runs yearly. Some of this revenue pays most of the disc jockey positions.

"The Underwriter program allows advertisers to reach a market they normally do not reach," explained Dr. Gray. One of Carol Campbell's duties includes identifying these advertisers and convincing them to utilize KPVU as a direct link to this market.

Campbell also coordinates fund-raising and promotional activities, including offering listeners various concert, club, or sporting event tickets.

To better serve their listeners, Campbell and her intern, De'Andrea Hughes, recently conducted a survey completed by faculty, staff, and students. The following percentages were compiled: 20% listen 5 hours a day; 40%, 1-4 hours; 30%, 30 minutes a day; and 10% do not tune in to KPVU at all.

Some commuter students

inquired about the possibility of increasing wattage to reach the inner city areas of Houston. Gray stated that they are in the final stage of obtaining their new Federal

thousand watts. Students also expressed concern in changing the 6-10 format to include rap and upbeat contemporary. They are also looking for more

the record companies to ensure that they send KPVU music. In addition, these companies request information concerning the success of certain music from Greg, who also reports the daily noon news.

Under the direction of Mrs. Carol Means, the news director, six communications students are participating in their on-campus internships this semester. Shawntell Jenkins, Alicia Jones, Tracy Maclin, Rolonda Malone, Adrienne Pinson, and Ronald Ratliff produce the 4:55 weekly newscast. Devonya Smith, a volunteer, also reports the news. Michelle Farris serves the dual role of news editor and DJ.

KPVU offers a wide variety of radio programs to attract all types of listeners. Larry Coleman, the program director, is responsible for these shows. He works with the DJ's and ensures the board operation runs smoothly. The following is a program list:

Mondays--"Like It Is"; Tuesdays--"Viewpoints"; Wednesdays--"In Black America" and "Panther Talk"; Thursdays--"Radio Dialogue"; Saturdays--"Hip Hop Countdown"; and Sundays--"Life to the Full" and "Reflections".

Dr. Gray stressed, "I am very much aware of the fact that this is your station. We provide a service for students."

## Developments in Russia

Continued from page 3.

A market economy has tradeoffs and many of the republics who have demanded secession from the union will find it more profitable to remain part of the U.S.S.R., she said.

If the West does decide to do business with the Soviets, Dr. Selivanova said she hopes they invest in manufacturing, rather than exporting raw materials and importing consumer goods.

Russia also produces oil and could benefit from more domestic production. Dr. Selivanova said the United States has a method to get 100 percent of the oil out of the ground.

Dr. Selivanova provided many examples of the effect of government control on Soviet life. For example, due to price-fixing, costs can be out of proportion. A videotape

can be more expensive than an apartment in Moscow.

She explained that she paid about one dollar per month for her three bedroom apartment she shares with three other adults and their children.

These are fortunate circumstances, she said. Many people would like to live in the larger cities which has created a high demand for housing. The government has had to curtail this movement from the small towns.

She described how her mother has a six-month supply of sugar, but she can use the sugar to barter with neighbors and friends for other items.

Dr. Selivanova, who is anxious to return home, said that the United States has lots of waste. "There is enough food to feed all of the people and the government should take care of this."

### Larry E. Coleman Program Director KPVU BOARD OPERATORS (D.J.) SCHEDULE (FALL 1991)

MONDAY-FRIDAY		
TIME	FORMAT	ANNOUNCER
6 a.m.-10 a.m.	GOSPEL	ANDREA TISDELL & CARLTON SKINNER
10 A.M.- 2 p.m.	JAZZ/URBAN	GREG BOWDRE
2 p.m.	JAZZ/URBAN	BRIAN WARNER-JACKSON
6p.m.-10p.m.	URBAN/JAZZ	EDWARD ROBINSON MONIFA THOMPSON MICHAEL JEFFERSON
10 p.m.- 2 a.m.	URBAN/JAZZ	
SATURDAY		
TIME	FORMAT	ANNOUNCER
6 a.m.-10 a.m.	GOSPEL	RON LIVINGSTON
10 a.m.- 2p.m.	URBAN/JAZZ	MICHELLEFARRIS
2 p.m.-6 p.m.	BLUES	MICHAEL PRINCE
6 p.m.-10 p.m.	RAP	ROBERT THOMAS
10 p.m.-2 a.m.	REGGAE/URBAN	ATIIM JACKSON
SUNDAY		
TIME	FORMAT	ANNOUNCER
6 a.m.-10 a.m.	GOSPEL	ALTON MATTHEWS
10 a.m.- 2 a.m.	GOSPEL	TIWANA FLAGG
2 p.m.- 6p.m.	GOSPEL	EARTHA STONE
6 p.m.- 10 p.m.	GOSPEL	ROBERT TATUM & CORY FREGIA
10 p.m.-2 a.m.	GOSPEL	RON LIVINGSTON

Communications Commission license.

Scott Hochberg, the consulting engineer has been working very hard to make this wattage boost a reality. Currently, KPVU operates at approximately 10 thousand watts, but the increase would bring them between 25 and 50

variety in the gospel artists. The faculty and staff rated KPVU an overall 6, on a scale of 1-10.

They suggested a need for more professionalism on the air, more local news, and more up-to-date artists.

Gregory Bowdre, the music coordinator and a disc jockey, is responsible for contacting

**NEED EXTRA INCOME**  
FOR 1991?  
Earn \$500 - \$1000 weekly stuffing envelopes. For details  
Rush \$1.00 with SASE to: OIH Group Inc.  
1019 Lk. Sherwood • Orlando, FL 32818

**Financial Aid available immediately!**  
Special grants program. Every student eligible. No one turned down. Simple application. Send name, address and \$1 P&H fee (refundable) to: Student Services, P.O. Box 22-4026, Hollywood, FL 33022.

**Earn 2,000 Dollars + Free Spring Break Trips!**  
North America's #1 Student Tour Operation Seeking Motivated Students, Organizations, Fraternities & Sororities As Campus Reps Promoting: Cancun, Bahamas, Daytona & Panama City! Call 1-800-724-1555!



## Viewpoints

# Gang activity appears on campus

Michelle Johnson  
Co-Editor-In-Chief

Gang rivalry is nothing new, but here at Prairie View it is becoming a problem.

I had always thought it was only a serious problem in mid-city areas, but now it seems to be affecting and harming those seeking an education, and even the teachers and administration, right here on our campus.

The recent stabbing of Corey Franklin was rumored to be a result of city rivalry, where one city is supposed to be better than the other.

The time is up for the foolishness. The senseless and needless violence that is corrupting our society and race as a whole, needs to stop.

I urge those of you who are fed up with the violence and constant displays of ignorance to speak up! It's time for all concerned students to stand up and say, 'We're fed up and we're not going to take it anymore.'

We can no longer hold the white man, parents, the church, the school, the University, the administration nor teachers responsible for the problems that our fellow students create.

If we don't put a stop to the violence, the vicious cycle will continue and the next stray bullet or misguided knife may hit you.

If you know persons with weapons, report it, to protect yourselves and your fellow classmates, because a college campus is no place for 9-millimeters, army knives or handguns. We have come here to get an education, not to get injured or killed.

We need to take away the power that these gangs think they have, and use this power in a positive way to help our society and future generations, by joining together to *Stop the Violence*.

Let's not only say these three meaningful words but utilize them.

# Make speech your best defense

By Roland Lemonius  
Staff Writer

And it came to pass that the days of homecoming drew near. And the goodly people of Pantherland prayed that the winter would hold, and that the death which opened the semester had meant the end of an era, and homecoming would be safe.

And the scribes of Pantherland tried. In the bi-weekly text they beseeched the people to observe peace during the joyous time.

But no, the wayward ones, stout-hearted and foolish sought to see things go otherwise, and did first stab a

fellow brother too close to the groin for comfort.

With the covenant broken, the sky God grew angry, and waxed thus with rage, and sent forth an Arctic blast so fierce as to chill the bones of the good and the evil.

And it rained nigh unto twenty-four hours.

But lo and behold, the evil would not be still, and they in their stupor amid the merriment and revelry, did fight and plunder, deface and destroy, overdose and shoot.

And 'The Man' said: It is good. Let them fight among themselves, and what better place than at the roots—in the halls of education.

Henceforth, many lost hope. They washed their hands of the matter, and stayed away; fearing for their health and safety, lest certain ill befall them at the hands of those uncaring ones.

But wherefore behaveth thy brethren so unseemly? at this stage, 'tis nought but self-imposed genocide, spontaneous combustion, and the persistence of ignorance (they have not yet looked up the word).

But the keepers of the law and Julius (not Caesar) still call out, give us a name, give

us the names. The identified will be apprehended, banished, fined or suspended.

Harken thus and be ye advised, they jest and kid ye not.

'Tis time to pluck those thorns from our sides, and beat their swords, knives and guns into pencils, pens and ploughshares, to plant seeds of wisdom and hope instead of strife.

O', thou goodly people of Pantherland, speak forth to the right ears and make a difference. Since faith can move mountains, imagine what words spoken in truth can do about the growing mounds of turd among us.

Express your ideas through Viewpoints only in *The Panther*

## Wanted for Black Death....

By Eldridge Lee  
Club Crescendo

Are all Black men warranted... for death?  
Malcolm, Martin, Marcus and Me  
Everytime I take a stand to be homogenous in my race the other agrees and pushes me further away  
But, as soon as I choose to integrate  
The other retaliates, persecution; both mentally and physically  
I am wrong to defend myself and yet must always be on the offensive  
I am constantly attacked as I strive to be EQUAL  
What is meant by equal?  
Separate, but equal?  
An unparalleled equality  
Hah, I must laugh, there is truth and justice!  
But it only pertains to those who inflict the injustice and the unjust  
So what now?  
Live and learn or..., Stand strong and steadfast, holding to my beliefs regardless of consequences  
I might even die, ... falling, but if I live my creed I'll fall still fighting.



# Underlying issues of Thomas' confirmation

By Dr. Manning Marable  
Letter to the editor

The debates surrounding Clarence Thomas's nomination and appointment to the Supreme Court provoked some of the sharpest political debate in recent years.

The fact that Thomas was confirmed by the narrowest margin of any Justice in the twentieth century indicates the bitterness and sharp emotions which his confirmation hearings produced.

Beneath the headlines was a conflict between three fundamental issues which characterize much of the general crisis in American politics and government. They are the crisis of liberalism, the politics of gender, and the politics of race.

Each of these issues worked in complex and contradictory ways both to illuminate and to obscure the actual character of American power. They explain how and why Clarence Thomas won.

From the beginning, President George Bush's justification and defense of Thomas was essentially a series of unambiguous falsehoods. No one seriously believed that Thomas was the "best qualified" jurist in the nation to sit on the high court.

No one was convinced by Bush's assertion that the nominee's race had nothing to do with the decision to replace the only African-American member of the

court, the liberal former Associate Justice Thurgood Marshall.

Thomas had brief experience as a federal justice, and before that, an undistinguished public record as a bureaucrat in the Reagan administration. His legal decisions and his published articles indicated at best a mediocre mind.

If Bush genuinely had desired to nominate a qualified, black Republican judge, he would have skipped Thomas and selected Amalye Kearse, an African-American currently serving on the federal appeals court in New York.

But Bush's real objective was to make political capital at the expense of the Democratic Party and particularly liberals, by appointing a narrowly conservative apologist for Reaganism to the Supreme Court, who happened to be black.

We should recall that other Republican presidents, when considering Supreme Court appointments, have chosen quality over partisanship. Dwight Eisenhower appointed two of the most liberal justices in American history—Chief Justice Earl Warren and Associate Justice William Brennan.

Gerald Ford appointed Justice John Paul Stevens to the court, who is viewed as a liberal. Even Reagan nominated Sandra Day O'Conn-

or, who is essentially a moderate conservative.

Bush's goal was not judicial excellence. He wanted a nominee who was opposed to a woman's freedom of choice on abortion, an ideologue with slim qualifications who would attack the liberal agenda from the court for the next thirty years.

When Professor Anita Hill's charges of sexual harassment began to circulate, Thomas's supporters wanted to suppress the evidence and to rush a vote through the Senate. To their shame, white Democrats also refused to halt the proceedings, until a firestorm of criticism from women's groups and the public generally forced new hearings.

On balance, the testimony of Professor Hill about Thomas's sexual harassment of her in the workplace was credible and persuasive. Witnesses corroborated her testimony.

Hill's charges against Thomas were devastating, in part, because the experience of sexual harassment is commonplace within our society for women of all races, classes and ethnic backgrounds.

According to a recent *New York Times*/CBS News Poll, about four out of ten women stated that they have been "the object of sexual advances, propositions, or unwanted sexual discussions

from men who supervise them or can affect their position at work." Only one out of eight women who were sexually harassed identified in this poll actually reported the incident.

Like Professor Hill, they knew that without hard evidence, their assertions were unlikely to be believed. Their professional careers would suffer. Interestingly, even one half of all men polled admit that they have "said or done something which could have been construed by a female colleague as harassment."

But it was here that the liberals, such as Senate Judiciary Committee Chair Joseph Biden, let Thomas off the hook. Biden and the liberals viewed Hill's accusations in the context of a criminal trial, with the presumption of innocence resting with Thomas.

But this was erroneous. This was not a trial, but a political hearing to determine the fitness of Thomas to serve on the country's highest court in a lifetime

appointment.

Even if Anita Hill did not exist, there was sufficient evidence to reject Thomas's nomination. With Hill's convincing and credible statements, enough doubt about Thomas should have existed which should have demanded his outright rejection.

As the Democrats equivocated, the Reaganite Republicans smelled blood and circled for the political kill. The Senate's leading demagogue, Alan Simpson of Wyoming, vowed that Hill would be "destroyed, belittled, hounded and harassed." With dark innuendoes, he claimed to have faxes and letters attacking Hill's credibility "hanging out of my pockets", warning him to "watch out for this woman."

Senator Strom Thurmond of South Carolina declared Hill's allegations to be "totally without merit", even before listening to her testimony!

In a racist, sexist society, it is relatively easy for white men with power to discredit and to dismiss a black woman. The media projected the controversy as part-soap opera, part-public trial, and accepted the interpretation that Thomas merited the presumption of innocence.

In this context, it was not terribly surprising that the majority of Americans witnessing the spectacle concluded that Thomas was telling the truth, and that Hill was lying. But for those who still continue to smear Anita Hill for possessing the courage and dignity to set forward, I would ask—Why would she lie? What does she actually gain from her actions?

Politically a conservative and identified with her tenure in the Reagan administration, she clearly is not a liberal. Conservative politicians, ideologues and sexists will attack her personal integrity and professionalism for decades to come.

Her career goal of becoming a federal judge is probably lost forever.

As University of Maryland law professor, Tanya Banks observed, Hill probably "Would not have taken this step without full consideration of consequences."

At the moment of truth, the liberals lacked the courage of their convictions. They sacrificed their principles before the volatile politics of gender and race. They physically recoiled when Thomas, in a moment of desperation, cynically charged "racism" and declared himself to be the tragic victim of a "high tech lynching."

They refused to acknowledge the reality that Anita Hill, not Thomas, was the real victim of lynching—not once but twice: the first time a decade ago, when she was sexually humiliated and harassed in private, and the second time on Capital Hill before the eyes of the world.

What do you call a man who violates the rights of women? Unfortunately, for years to come, we may call him Clarence Thomas.