

Prairie View A&M University

Digital Commons @PVAMU

---

PV Panther Newspapers

Publications

---

10-26-2005

## Panther - October 2005 - Vol. LXXXIV, No. 7

Prairie View A&M University

Follow this and additional works at: <https://digitalcommons.pvamu.edu/pv-panther-newspapers>

---

### Recommended Citation

Prairie View A&M University. (2005). Panther - October 2005 - Vol. LXXXIV, No. 7., *Vol. LXXXIV, No. 7*  
Retrieved from <https://digitalcommons.pvamu.edu/pv-panther-newspapers/350>

This Book is brought to you for free and open access by the Publications at Digital Commons @PVAMU. It has been accepted for inclusion in PV Panther Newspapers by an authorized administrator of Digital Commons @PVAMU. For more information, please contact [hvkoshy@pvamu.edu](mailto:hvkoshy@pvamu.edu).

THE *"Something inside so strong..."* PAN<sup>THER</sup>

THE OFFICIAL STUDENT NEWSPAPER OF PRAIRIE VIEW A&M UNIVERSITY

*Homecoming Edition*

# Panther pride in 2005:

Students enjoy initial homecoming events, page 6

PV Greek Life...  
"I'm an Alpha," page 13



# The history of Prairie View



This year marks the 130th anniversary of Prairie View A&M University. Prairie View is one of the oldest and most prominent institutions of higher learning in the state of Texas. The university's humble beginnings date back to 1876; unfortunately many students aren't familiar with the extensive historical background of the prestigious African American university.

Prairie View A&M University serves as the second oldest public institution in the state of Texas, originating in the Texas constitution of 1876. Subsequent to the establishment of the Agriculture and Mechanical College of Texas (Texas A&M University) in 1871, and in accordance with constitutional provisions pledging "separate schools shall be provided for white and colored children, and impartial provisions shall be made for both," Prairie View was established for the education of African Americans.

Prairie View State Normal and Industrial College opened on March 11, 1878. The affairs of the college were turned over to the A&M College Board of Directors, who regulated the curriculum for the "preparation and training of colored teachers." The set of courses offered included home economics, mechanical arts, arts and sciences, and agriculture. The curriculum expanded to include nursing after the university was established as a branch of the Agricultural Experiment Station. The board of directors appointed a pal teacher to administer the college, which was ultimately rection of the president of Texas A&M College. L.W. Minor the first principal of Prairie View, serving for one year. At this for the university had been laid. On March 11, 1878 eight African first students of the university, and the first of their race to enroll in a

princi-  
under the di-  
was appointed as  
point the foundation  
American men became the  
state supported college in Texas.

Following further expansion, in 1919 the four-year senior college program was begun, and in 1937 a division of graduate studies was added, offering masters degrees in agricultural economics, rural education, agricultural education, school administration, and supervision, and rural sociology. In 1945, Prairie View was authorized to offer "as need arises," all courses offered at the University of Texas. Additionally, in 1945 the name of the institution was changed from Prairie View Normal and Industrial College to Prairie View University. The name was changed once again in 1947, to Prairie View Agricultural and Mechanical College of Texas after the Texas Legislature provided that "courses are offered in culture, the mechanics, arts, engineering, and natural sciences." On Aug. 27, 1976 the name was changed once again to its present one of Prairie View A&M University, and was established as an independent unit of the Texas A&M University System.

By Anterria Brown  
Source: www.pvamu.edu

## In the news...

### Rosa Parks, civil rights pioneer, dead at 92

DETROIT (AP) - Nearly 50 years ago, Rosa Parks made a simple decision that sparked a revolution. When a white man demanded she give up her seat on a Montgomery, Ala., bus, the then 42-year-old seamstress said no.

At the time, she couldn't have known it would secure her a revered place in American history. But her one small act of defiance galvanized a generation of activists, including a young Rev. Martin Luther King Jr., and earned her the title "Mother of the Civil Rights Movement."

Mrs. Parks died Monday evening at her home of natural causes, with close friends by her side, said Gregory Reed, an attorney who represented her for the past 15 years. She was 92.

She was born Rosa Louise McCauley on Feb. 4, 1913, in Tuskegee, Ala. Family illness interrupted her high school education, but after she married Raymond Parks in 1932, he encouraged her and she earned a diploma in 1934. He also inspired her to become involved in the NAACP.

### Woman finds bullet in pork casserole

ORMOND BEACH, Fla. - Was the pig a victim of a drive-by shooting? That's one theory to explain how a bullet wound up in Diane Johnson's pork loin casserole.

She said there was no mistaking the projectile's distinct shape in the pork loin she bought at a Publix grocery store.

All meat is scanned with a metal detector before reaching Publix shelves, said Dwaine Stevens, spokesman for the company in Florida.

It's not clear how the scanners missed the bullet - or how the bullet got in the pork loin in the first place.

Stevens said someone may have fired into a herd of grazing livestock.

According to the Wisconsin Pork Association, professional slaughterhouses don't shoot animals, for employee safety and meat quality concerns.

Johnson, 74, said she was satisfied with a \$10 dollar refund and another fresh pork loin from Publix.

She said she didn't plan to sue because no one got hurt.

### Hollywood impersonators busted

LOS ANGELES - The red and cuddly Sesame Street Muppet Elmo has learned a new lesson: 'H' is for handcuffs.

A man dressed as the character was one of three impersonators arrested last week for allegedly harassing tourists for tips after posing for photos on Hollywood Boulevard. Booked with him were people impersonating superhero Mr. Incredible and the dark-hooded character from the horror movie "Scream."

The impersonators said they were taken into custody at gunpoint, handcuffed and paraded on the Hollywood Walk of Fame before stunned tourists and other impersonators. They were charged with misdemeanor "aggressive begging," police said.

"With all of the crime in Los Angeles they pick on us?" said Elmo impersonator Donn Harper, 45, who makes up to \$400 a day in tips.

Tourists have complained that the costumed characters harass them for not tipping after posing for photos in front of Grauman's Chinese Theater and the Kodak Theater. Merchants say some of the costumed characters are scaring tourists.

Los Angeles Police Officer Michael Shea said police warned impersonators at a meeting last month that the department would start enforcing solicitation and harassment laws. Officers conducted a sting operation by posing as French tourists who didn't understand English or the American tipping culture.

"Make no mistake about it - I wanted the characters to know what we're doing," Shea said.

### Body found frozen flown to Hawaii for ID

HICKAM AIR FORCE BASE, Hawaii - A body believed to be that of a World War II airman, found frozen in the Sierra Nevada, arrived Monday in Hawaii for identification, officials said.

The body in an Army uniform was discovered earlier this month mostly encased in a glacier in Kings Canyon National Park. It had been thawing since last week at the coroner's office in Fresno County.

The body was flown out of Travis Air Force Base to Hickam Air Force Base on Oahu. The examination, which will take several weeks at least, will be done by the Joint POW-MIA Accounting Command.

An identification could solve part of a decades-old mystery - the disappearance of a navigational training plane that left a Sacramento airfield in November 1942 carrying a crew of four on a routine flight.

## FBI trying to repair image on college campuses

Associated Press

WASHINGTON (AP) - The idea of academics collaborating with the FBI might once have aroused loud complaints on some campuses where agents had spied on student protesters and government institutions were viewed with mistrust.

But when FBI Director Robert Mueller announced he had recruited 17 university presidents to offer advice on the culture of higher education, there were a few laudatory e-mails and a couple of mentions in campus newspapers, but mostly silence, according to several school presidents.

The National Security Higher Education Advisory Board planned to hold its first meeting Friday in Washington. Set to attend are representatives from schools across the political spectrum, from the more liberal University of Wisconsin and its history of protest to the more conservative Texas A&M University with its Corps of Cadets.

The board includes former CIA Director Robert Gates, Texas A&M's president, and former Democratic Sen. Bob Kerrey of Nebraska, a member of the Sept. 11 commission and president of the New School University in New York.

"The times have changed and they've changed in this case for the better," said board member Amy Gutmann, president of the University of Pennsylvania.

"The idea that we can sit down at a table and have a true dialogue which is open and aimed at mutual understanding across differences is terrific," Gutmann said. "We're under no illusion that we'll agree on everything, but we do agree on the importance of reaching some common understanding."

The group's chairman is Graham Spanier, president of Pennsylvania State University. Spanier said much of the change described by Gutmann dates from the attacks of Sept. 11, 2001.

"The university community generally has come to feel that they need to be part of the solution," Spanier said.

Gates recalled going to see Vice President Dick Cheney and Andrew Card, President Bush's chief of staff, to discuss problems foreign students were having obtaining visas after the attacks.

"I made the comment that this isn't the 60s and 70s. The universities want to be helpful. We understand the threats to the country and, unlike in

the past, there is a real opportunity for cooperation that is beneficial to both sides," Gates said.

The FBI has described the board's mission as offering advice about the traditions of openness, academic freedom and international collaboration. Mueller has said the board also could serve as a recruitment tool for the FBI and other law enforcement agencies.

The presidents see the exchange as an opportunity to press their own concerns about the treatment of foreign students, the international exchange of technology and security issues at laboratories that work with anthrax and other deadly substances.

Yet the terrorist attacks have not completely rehabilitated the FBI's image on college campuses, several presidents and historians said.

The bureau was badly damaged in the 1970s by revelations about its COINTELPRO program, begun under J. Edgar Hoover and aimed at disrupting civil rights, student and dissident groups.

Even since Sept. 11, civil libertarians and student activists have voiced concerns that the bureau again is trying to stifle lawful protest, and that the FBI's presence on campuses could chill open exchanges.

They point to some provisions of the anti-terrorism Patriot Act, including one that allows the FBI to obtain library records, and to bureau documents that detail monitoring of anti-war groups and enhanced cooperation between the FBI and campus police.

"The FBI does have a public relations problem that stems from its past history and extends to concerns raised by federal surveillance policy post-9/11, including the ability to access library records," said Athan Theoharris, a Marquette University historian who has written extensively on the FBI.

John Wiley, the University of Wisconsin's chancellor, said distrust of law enforcement is most pronounced among the many foreign students on his campus. "They typically arrive from places where the police are not viewed as being there to protect you or someone you typically turn to for help," Wiley said.

There were mild protests at the University of Massachusetts in Amherst, Mass., in 2003 when a campus officer assigned to an FBI task force interviewed an Iraqi-born professor about his political views. The FBI would not give any details about the episode, and the professor said the questioning was brief and nonthreatening.

## Washington takes control of campus police department

By Latisha Johnson-Wallace  
News Editor

Fred Washington, associate vice president for finance and administration, has assumed the position of interim chief of police after

the termination of police chief Brian Davis.

Davis, who was relieved of his duties Oct. 21, had been chief of police since June 15, 2005.

In another development, police lieutenant of operations Laurel Foster has resigned from her position.

## UTMB closing its doors

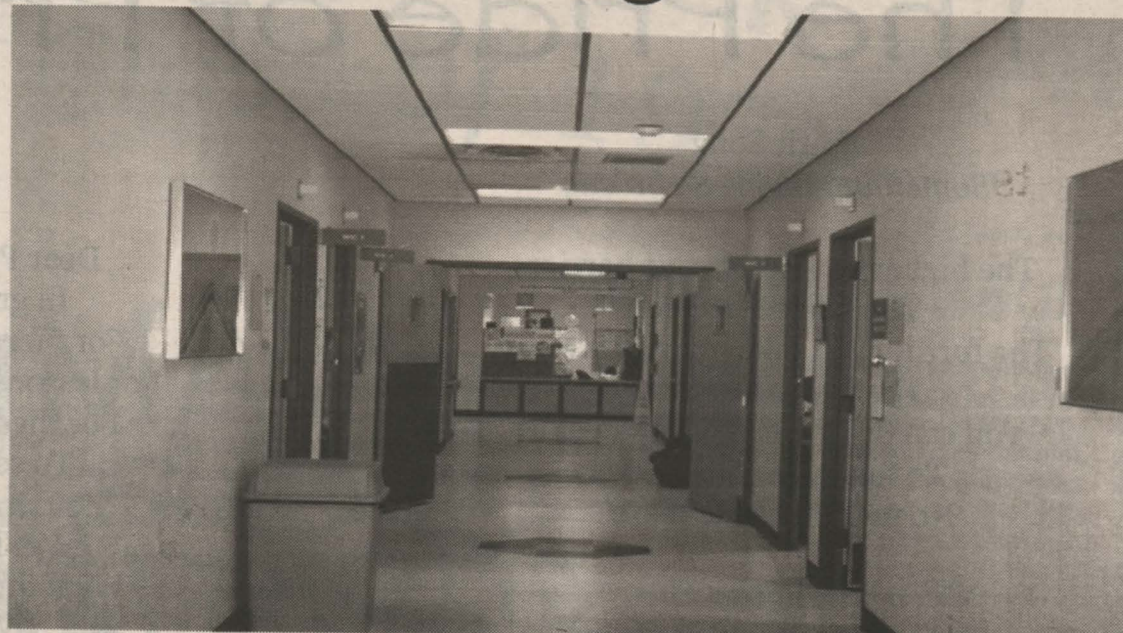


photo by Latisha Johnson-Wallace

**Empty hallways:** The UTMB clinic on campus will close its doors on Nov. 4.

By Jamaur Barnes  
Panther Staff

On Nov. 4, 2005, the University of Texas Medical branch will close its doors at Prairie View. I think that it will be a tremendous loss to the local community," said UTMB Clinic director Janis Billups. In 1994 Prairie View A&M University decided that it was time to open the UTMB clinic on campus.

The purpose of the program was intended to accommodate the female population of the university as well as surrounding areas with free well womanis exams, contraceptive education, prenatal and maternal support, all at no cost.

Now nearly 11 years later, the UTMB branch located on the second floor of The Owens

Franklin Health Center is closing due to lack of government funding.

As with most programs, if you keep cutting funding, it will eventually dissolve, said Billups. Title 5, 10 and 20 in the federal grant program fund the health program. The set fee allotted by the government was not enough to cover the needs of the clinic, added Billups.

Not only is funding down, but so is morale. "I hate that the clinic is closing. With reference to the services offered, it is hard for students to provide the funds to secure the needed health services. It is a huge loss, and bad for the working class community," said Senior Cheleatha Lott.

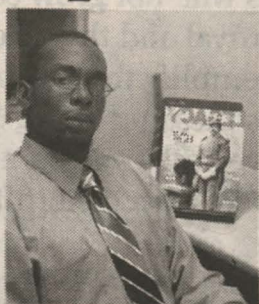
While in service, the clinic has been helpful in serv-

ing the medical needs of the community. "Last year we saw 440,000 people alone," said Billups. "The doctors are all so nice and receptive and make it exceptionally easy to open up about everything. I hate to see it go," said Junior Cerissa Edwards. In addition to Prairie View, seven out of the 38 UTMB clinics in Texas will also be closing.

Although the branch here is closing, Billups wants to assure students that there is still cost friendly medical assistance at various locations in Katy, Fort Bend, Conroe, and Bryan, at the maximum price of \$20.

In addition all records will be uploaded and transmitted via computer, or carried over by hand.

## SGA speaks out



SGA President Oludayo Olusanya

Student Government Association would like to welcome our alums back to the university to celebrate 130 years of excellence. Since last year, there has been the addition of the shuttle bus and a computer lab in Farrell Hall. To the students, SGA would like to thank all who donated change for the hurricane relief fund.

Although the hurricanes have passed, assistance is still needed; SGA will conduct another coin drive at the homecoming game. Also, you may purchase your homecoming shirts in the SGA office on the 2<sup>nd</sup> floor of the MSC room 223. Be sure to wear your shirt to the game and show your school spirit.

As a final point, voice your concerns, and suggestions to SGA at SGA@pvamu.edu or by calling 936 857 2220.

## Your local forecast

### Thursday (Oct. 27)

Partly Cloudy  
High: 76  
Low: 51

### Sunday (Oct. 30)

Partly Cloudy  
High: 78  
Low: 56

### Friday (Oct. 28)

Partly Cloudy  
High: 78  
Low: 53

### Monday (Oct. 31)

Isolated T-storms  
High: 80  
Low: 55

### Saturday (Oct. 29)

Partly Cloudy  
High: 79  
Low: 55

### Tuesday (Nov. 1)

Scattered T-storms  
High: 81  
Low: 56

### Wednesday (Nov. 2)

Sunny  
High: 80  
Low: 59

## THE PANTHER

THE OFFICIAL STUDENT NEWSPAPER OF  
PRAIRIE VIEW A&M UNIVERSITY

Editor in Chief: Nneka Meka

News Editor: Latisha Johnson-Wallace

Sports Editor: Rashad Morgan

L&H and A&E Editor: Alanna Jones

Photographers: Arthrayia Love  
Gabrielle Howard  
Evan White  
Dawnielle Colquitt

Copy Editors: DeTorsha Brunson  
LaCheryl Whitlow

Ad/ Business Manager: Kayla Barnett  
Flag: Trason Smith  
Layout: Terrance Gilbert

Graphics Editor: Otis Clayborne II  
Photo/Online Editor: Marques Allen

The Panther is a publication supported through advertising and student activity fees. Views expressed within the publication are not necessarily those shared by Prairie View A&M University or the Texas A&M University Board of Regents. All articles, photographs, and graphics are property of The Panther.

## The Pride of Prairie View

### Spirit Song

*"Something Inside So Strong"*

The higher you build your barriers  
The taller I become  
The further you take my rights away  
The faster I will run  
You can deny me, you can decide  
To turn your face away  
No matter 'cause there's

### Chorus

Something inside so strong  
I know that I can make it  
Though you're doing me wrong, so wrong  
You thought that my pride was gone, oh no  
There's something inside so strong  
Oh No, something inside so strong

The more you refuse to hear my voice  
the louder I will sing.  
You hide behind the walls of Jericho  
your lies will come tumbling down.  
Deny my place in time, you squander wealth  
that's mine, my light will shine so brightly it  
will blind you,  
'Cause there's something inside so strong,  
I know that I can make it, though you do me  
wrong, so wrong.  
Brothers and sisters, when they insist  
we're just not good enough,  
but we know better,  
just look them in the eyes and say,  
I'm gonna do it anyway, anyway  
(Chorus x2)

By Labi Siffre

### Alma Mater

*"Dear Prairie View"*

Dear Prairie View, our song to thee we raise,  
In gratitude we sing our hymn of praise,  
For mem'ries dear, for friends and recollections  
For lessons learned while here we've lived with thee.  
For these we pledge our hearts full of devotion,  
To serve thee now, and through eternity.  
As days go by, our hearts will not grow cold,  
We'll love thy purple royal and thy gold  
We'll through our lives exemplify thy teachings,  
We'll always strive a blessing to be.  
Thy children we give our love and pride confessing,  
We'll love thee now, and through eternity.

Words by O. Anderson Fuller  
Music from "Finlandia" by Sibelius

### Fight Song

*"Cheer for Prairie View"*

Cheer for Prairie View  
Cheer for the purple and gold  
Let's cheer them on  
Till they make a score  
Get the ball and score some more  
Cheer for Prairie View  
Cheer for the purple and gold  
We're marching on once more  
Till we make the score  
for a VICTORY

By John Greathouse, '83

## Quick Facts

**University Motto:** Prairie View Produces Productive People

**University Spirit Song:** There's Something Inside So Strong

**University Newspaper:** The Panther

**University Fight Song:** Cheer for Prairie View

**Alumni Newspaper:** The Prairie View Standard

**University Yearbook:** Pantherland (Pardus)

**University Colors:** Royal Purple and Gold

**University Alma Mater:** Dear Prairie View

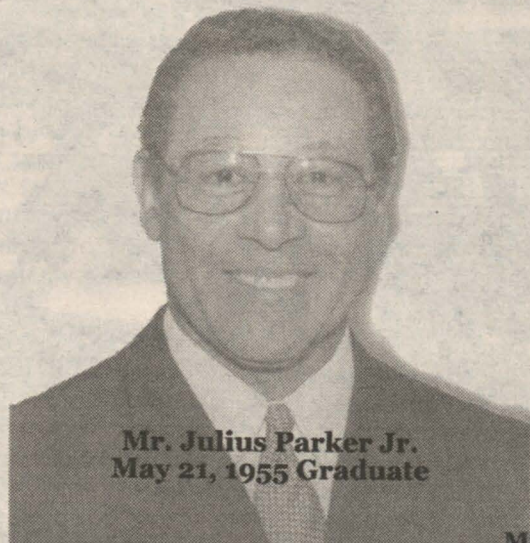
**University Mascot:** The Panther

**University Nickname:** The Hill

**Stadium:** Blackshear Field

# Welcome Back Class of 1955

## Mr. Golden Anniversary



Mr. Julius Parker Jr.  
May 21, 1955 Graduate

**Major:** Biology **Minor:** Chemistry

Participated in **Barons of Innovation** while attending PV

**Last professional job:** Vice president of administrative services and associate vice president of business affairs at the University of Arizona (1990-to date)  
President and chief executive officer of J.P. Industries, Inc. (1995-to date)

**Hobbies:** Coin and stamp collecting

**Most admired American:** Dorothy June Parker

**Favorite musical artist:** Ramsey Lewis

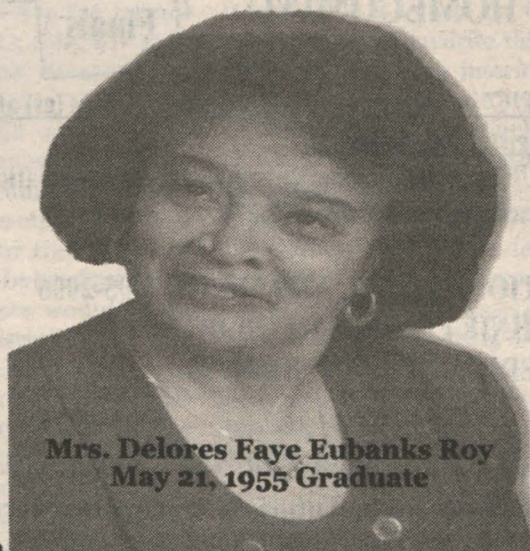
**Favorite book:** *Future Shock* by Alvin Toffler

**Currently reading:** *My Life* by Bill Clinton

**Message of encouragement to students:** Within your power, never let yourself be associated with a second-class performance. Always put your best foot forward. The world looks for and respects "excellence" regardless of the color in which it is packaged.

**Family:** Dorothy J. Parker (spouse), Louis Parker (brother), Julian R. Parker and Jules G. Parker (sons), Dorvita Parker (daughter)

## Mrs. Golden Anniversary



Mrs. Delores Faye Eubanks Roy  
May 21, 1955 Graduate

**Major:** English **Minor:** Spanish

Participated in **Club 26** while attending PV

**Last professional job:** High school assistant principal for 20 years in Prince William County school system in Virginia

**Hobbies:** Interior decorating

**Most admired American:** Oprah Winfrey

**Favorite musical artist:** Luther Vandross

**Favorite book:** *Long Walk to Freedom* by Nelson Mandela

**Currently reading:** *The Color Purple* by Alice Walker

**Message of encouragement to students:** Set goals, formulate plans to achieve those goals. Be persistent and stick with your plan. Get help when you need it.

**Family:** Caesar A. Roy (spouse)

## Super Alumni Saturday!

The University Office for Alumni Relations is pleased to announce that on homecoming day, Super Alumni Saturday will take place for all decades to return to the "Hill" and celebrate their connection to PVAMU. Any alumnus or alumna of this great university should come out and celebrate with us. Look for the huge alumni tent near the Billy Nicks Monument. Alumni will have the opportunity to:

- Reunite with old classmates
- Tour the PVAMU campus and discover some of the exciting changes that are taking place
- Meet the President of Prairie View A&M University, Dr. George C. Wright and the First Lady Mrs. Valerie Wright
- Visit with University faculty, staff and students
- Meet and greet Vice Admiral David L. Brewer III, Prairie View alumnus and United States Navy Commander of the military Sealift Command
- Meet the President of The PVAMU National Alumni Association, Mr. Clem Daniels and become a member of the PVAMU NAA
- Congratulate the President of the Class of 1955, Major General Julius Parker, Jr.
- Shop for PVAMU memorabilia at the University Bookstore and at the NAA Super Alumni tent
- Update your records and receive a PVAMU alumni bracelet

## Homecoming Highlights

### Oct. 27

- University Office for Alumni Relations Open House [located in Anderson Hall 111] @ 1 p.m.

### Oct. 28

-Class of 1955 breakfast at the Sofitel Hotel in Houston. @ 9 a.m.

### Oct. 29

-Homecoming Parade @ 10 a.m.

-The President's Luncheon for the class of 1955 @ 12 p.m.

-Super Alumni Saturday hosted by PVAMU & the PVAMU National Alumni Association @ 1 p.m.

-President's reception for the class of 1955 @ 3 p.m.

-Football classic PVAMU vs. Mississippi Valley @ 5:30 p.m.

-Class of 1955 fellowship and social hour at the Sofitel Hotel in Houston @ 10 p.m.

### Oct. 30

-Class of 1955 farewell breakfast at the Sofitel Hotel in Houston @ 8 a.m.

## Mr & Mrs. Homecoming Candidates 2005

George A. Gibson ('60)

Angie L. McCann Grace ('55)

Dr. Marcus A. Freeman, Jr ('55 & '56)

Winners will be announced Friday night Oct. 28 at the NAA Homecoming Banquet

## Freshmen anticipate first homecoming

By LaCheryl E. Whitlow  
Panther Staff

Well, it might not be your first time, but for many freshmen homecoming at Prairie View A&M is definitely a first. Apart from activities such as mum making and pep rallies the college homecoming is far beyond any experiences that most traditional college freshman are used to as compared to high school.

Outside of it being a way to exemplify school spirit some first year students say it's just all around exciting. "I'm really enjoying the homecoming festivities because there are so many different things that people can do, it's really been fun so far," said freshmen Tiffany Thompson.

Homecoming usually occurs right after midterms so many freshmen and upper classmen view homecoming as an excellent way to relieve stress and reward themselves for the previous weeks of going test after test. This factor for many freshmen only makes the presence of the homecoming weeks planned events more anticipated. "I have never participated in anything quite like this before. I bought the \$30 packet that student activities offered and I'm very excited

about the other upcoming activities," said freshman Luvonia Thomas.

As with any other activities freshmen and upper classmen should keep in mind to keep precautions at the top of their priority list for homecoming. Many students get so preoccupied with the occasion that they began to be careless with safety measures such as underage drinking/intoxication, the possibilities of date rape, and other unwholesome situations.

A student, (name withheld) said, "Homecoming is fun and everything but my advice to freshmen is that everything that glitters ain't gold, don't get lost in the hype of thinking you can party all night and not have to go to class it will catch up with you."

With all that in mind indulge yourself in the homecoming happenings. Just remember to be careful and aware of your surroundings at all times. Homecoming is meant to be a fun, enlightening, and even learning experience. This is the unlike any other activity this year; it will attract alumni, other college students, family, and friends, so make sure you make the most of it because it's nothing like your first time.

## "Panther pride in 2005" Students enjoy initial homecoming events



Photo collage by Terrance Gilbert

Let the games begin: Students enjoy the first half of homecoming events.

## Former student performs at gospel explosion

By Kenyetta Allen  
Panther Staff

Former Prairie View student Gay Arbuckle came back to her alma mater to kick off Homecoming 2005, "Panther Pride in 2005" at the gospel explosion held Sunday, Oct. 23. Although there was a \$5 fee unlike last year, the turnout was still nice. As the featured guest artist from Dallas, Texas, and former Baptist Student Movement member, faculty, staff and students eagerly awaited for her to hit the stage.

While the audience waited, they were entertained by none other than some of the finest talent on "The Hill." The master of ceremonies for the night was also a former BSM member. To get the spirit moving and to lead the audience in praise and worship was the University College praise team. After UC's praise team was the University Chorale under the direction of A. Jan Taylor. They gave their two selections, then the Baptist Student Movement walked onstage. As they finished "Incredible God" led by Michael Fuller and "Be Encouraged" led by Angel Porter under the direc-

tion of Rebekah Love, the Spirit of the Lord began to truly stir up in the place. "I felt really good to sing for the Lord and even better when I noticed how many people were there to support PV despite the cost," said sophomore Angel Porter.

Next up to perform were the PV Mimes. They mimed to an old gospel song called "Joy" and received a standing ovation. Following them was Brandi Terrell who gave her rendition of CeCe Winans' "Alabaster Box." Next were Mark Gordon and Eternal Life. They gave their two songs and then it was time for Gay Arbuckle to hit the stage.

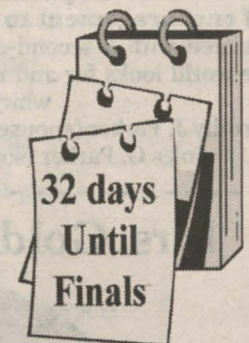
Before she was physically seen on stage she belted out "The Star Spangled Banner" behind stage. As soon as she finished, she busted onto stage with much energy. She sang about five songs and really got everyone into the spirit. "Overall, I enjoyed the gospel explosion. I am glad that I went and my \$5 was worth it," stated freshman Brittany Swain. "Starting off our homecoming week with God's presence indeed shows us favor so Happy Homecoming, Panthers and be safe," said senior Lunita Anderson.



## The Answers

Weekly Update for Freshmen

PANTHER PRIDE IN 2005  
HAPPY HOMECOMING



**You must have a grade of 'C' or better in your developmental class (es) at mid-terms to be able to pre-register for the spring.**

Check out the following URL: <http://calendars.pvamu.edu/> for information about our Quick THEA testing schedule or call 936/857-2747.

CONGRATULATIONS TO MR. AND MS. UC 2005-2006  
MR. JOHNIE L. JONES III BLDG 38  
MS. ERICA NELSON BLDG 39

BLDGS 35 & 37 hosted a movie night with "the Gamma Sigs."  
BLDG 35 sponsored a "Late Night Tutorials" during mid-term week.  
BLDG 42 hosted a "Rap A Taste" and book signing with the author of "A Visionary's Walk," Ms. Lanelle Tate.  
BLDG 45 hosted "Blacks in the Bible" at the UC Theater.

CONGRATULATIONS TO THE HONDA CLASSIC QUIZ BOWL TEAM  
FROM BLDG 36 WHO PLACED 4<sup>TH</sup> IN THE RECENT COMPETITION!!  
THE MEMBERS ARE: ISAAC HOYT, JOE LUCKETT, BRANDON  
HARRISON AND BRIAN WRIGHT!!

## Where architecture meets art

By Dr. Clarence Talley Sr.  
Faculty Contributor

Architecture is an art and a science. So it is fitting that Architecture and Art at Prairie View A&M University find themselves together in a new facility that is the talk of the campus.

Faculty, students, staff, and visitors have offered their opinion regarding this state-of-the-art facility and its provocative and aesthetically challenging design. Comments have ranged from the good, the bad, to the ugly.

Some have even asked, "What is it? Is it supposed to be a spacecraft? Is it Noah's Ark? Others have said, it looks "weird." Then, there are those who have voiced their delight in the building's eclectic, non-traditional appearance.

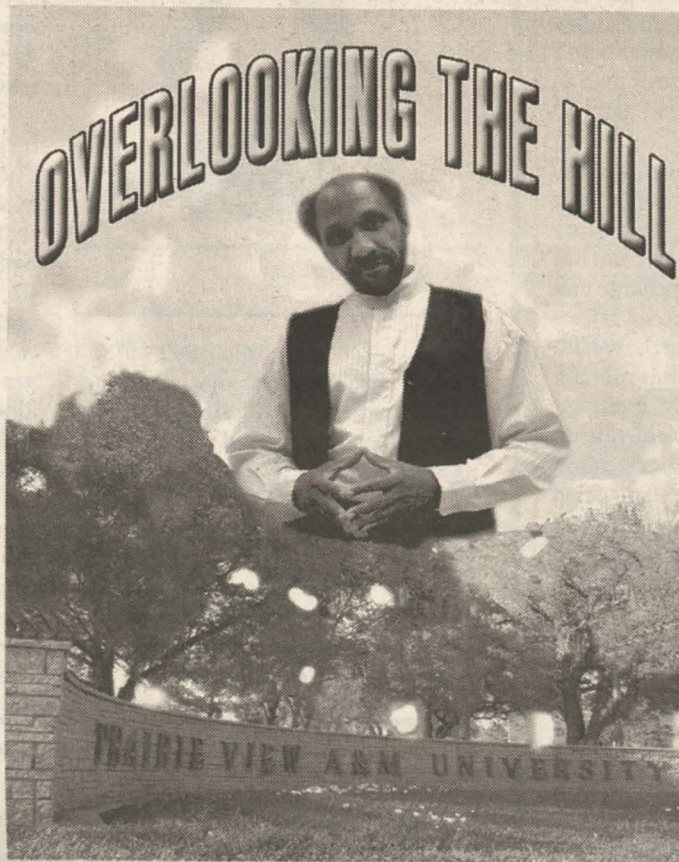
Students in my Arts 1203 Introduction to Visual Arts classes expressed mixed opinions about the building. They have said it is unique, complex, abstract, innovative, and unstable. As you can see, opinions are diverse.

However, after my students studied and analyzed the modernist style, the naturalistic style incorporated by Frank Lloyd Wright, and the deconstructive postmodernist approach, which allows for a greater degree of creative and artistic freedom, the students understood better the formal aspects of the building's design and what constitute its uniqueness.

Although odd to some and visually imposing to others, the building's uniqueness does set it apart from other structures on campus; for the School of Architecture to be headquartered in anything less would be an insult to the discipline.

The building designer is noted architect Michael Rotondi who, in conjunction with a Dallas based architectural firm, saw the project to its completion.

The three story building has many wonderful features both inside and out. In the building's interior, you will be impressed with its spacious open atmosphere. Upon entry you are immediately caught up in the sights and sounds of the building. Designed with a "canyon motif" in mind, the building's openness draw visitors into the cavernous areas of offices, studios, and



classrooms. Standing on one floor and calling out to a student or colleague on another floor is nothing short of a Grand Canyon experience.

Another attractive interior feature is the rollercoaster-like stairs which crisscross through the space. Looking up from the main floor, the stairs look like a special attraction ride at an amusement park. They ascend to meet the sun as it rises on the east end of the building and bids it farewell as it sets on the west end. One of my favorite things about the building's interior is how the stairs appear to reach endlessly into space touching the heavens. The continuous narrowing ascent is by no means meant for the faint of heart; thus, the elevator is recommended.

On the exterior, the most significant and awe-striking aspect of the building is its brick work. Countless numbers of bricks are skillfully placed: turning, rounding, curving, and twisting into a beautiful mass.

The undulating flow of the brick work is by all means an eye-catcher. Driving, walking, or running by, the building can be a pleasant distraction. Notable on the front façade is the rhythmic or wave-like appearance of the brick wall. Designed as a whole, from an angle they appear as overlapping planes. They are also reminiscent of dominoes positioned upright, then given a gentle nudge, sending them

plummeting forward. This slight shift creates the unconventional windows which spiral upward allowing light to enter the structure.

Another feature, as Rotondi calls it, is the "big sun shade" which screens the main porch of the building. The screen runs the length of the design studios and offices on the north, and silently beckons its inhabitants to come out and playfully enjoy the porch area. Its huge angular, yet light, structure is supported by numerous posts and beams systematically aligned. Strolling underneath this exoskeletal structure, one sees in perspective a series of fairly concentric triangles which appear to continue into infinity. Strategically located, sun shades also screen portions of the east and west ends of the building. The "big sun shade" on the north, however, is the first major feature seen by those arriving on the university campus.

To conclude, there is much more that this new Architecture and Art Building has to offer. Come by and meet the faculty, students, and staff, and enjoy this architectural marvel for yourself. It is a building the University, the state, and the nation can all be proud of; Michael Rotondi is. He gleefully stated, "If there is any project I am remembered for; I hope it is this one."

## Are White Students "Armed for the World?"

By Candyce Phoenix  
Black College Wire

I wonder if white people know that they are white. Do they wake up in the morning and think, "Wow -- I'm white"? When they sit in class, do they pay extra attention when they're reading a white author's works? Seriously, I'm just wondering.

I'm black. True, I don't wake up thinking, "Wow -- I'm black." But I do pay extra attention when somebody who looks like me winds up in the syllabus for freshman English. I do get a little miffed when a white person touches my hair, exclaiming, "I just had to feel it! It's so different!" I try to make sure that if I'm not early, I'm at least on time -- not C.P. time, either. I'm not trying to "play the race card." I'm just saying that I'm black and I know it -- every day, maybe every minute.

This semester, I decided to exchange Columbia University, my regular school, for Howard University in D.C. Though the campus abounds with black faces, most if not all of the black students and faculty are still aware of their blackness, probably because they need only go to Capitol Hill to find scores of people who have either forgotten, don't care about or actively work against them.

There is a constant sense of camaraderie, an agreement that we are all here to solve the problems facing our race and the country at large, to get an education and make things better. As at every school, there are those who are primarily out to make money, but in most cases, even they want to use their positions to help others. There is an understanding that those at the Mecca, as Howard is known, have not only a desire but an obligation to better society.

Columbia is a great school. It has opened doors and given me opportunities that I might not have had otherwise. The value and reputation of an Ivy League education cannot be underestimated. But I fear that many who leave predominantly white schools, institutions that train leaders of tomorrow, may be woefully unaware of issues facing communities and people of color.

Sitting in class, you can sometimes hear a comment made that isn't outwardly racist, but still maintains a tinge of discrimination. In those instances,

I have often thought to myself, "OK, will you speak up today or are you just going to let this one go?" More often than not, being in the minority fills me and others with an obligation to stand up for my \_\_\_\_\_ (fill in the blank: race, ethnicity, religion, sexual orientation, etc).

White institutions do not have a responsibility to train us all to go out and scream "Black Power" in the faces of everyone we meet. We shouldn't somehow find a way to retroactively turn them into HBCUs. Neither Howard nor Columbia is intrinsically better than the other, but the focus on different cultures that HBCUs offer presents a critical counterbalance to the dominant approaches to education prevalent in the Ivy League.

We need to find ways to ensure that these leaders enter the world with a working knowledge of the realities facing various ethnicities. My black philosophy professor explained the goal of college as being "knowledge for action . . . academic excellence with social responsibility." He described it as "arming" students for the world.

Curricula at many white institutions place disproportionate importance on white scholars, and effectively deny the importance of scholars of color. They arm students with a rifle with which to fight, but do not encourage them to pull back from the scope to see more than just the Eurocentric world on which our society tends to focus. Only two things can result: they will try to help and shoot blanks, or they will simply shoot to kill when addressing race issues in the future.

More and more universities are beginning to embrace cross-cultural curricula. Some do so willingly, others as grudging responses to widespread student protest and criticism. Still others settle for simply creating the illusion of action and change by throwing money at serious concerns and forming new, but impotent offices charged with addressing diversity concerns.

Whatever changes these institutions decide to make, they cannot deny the increased globalization that affects almost every profession -- from medicine to business to law. In a country that will soon consist mostly of people of color, Eurocentric institutions must expand their scope if they hope to remain relevant in the long run.



## Where are the advocates for PV? Or will Hurricane Katrina strike again?

How history manages to repeat itself is astounding. Actually, it isn't so astounding if you understand the number that has been done on the minds of African Americans in this country. Willie Lynch did, indeed, mastermind the perfect crime. We are now a people who sit and listen to the wind howl, feel the air grow cold, see the darkness fill the clouds, know that there is a storm brewing, but wait until the Hurricane Katrinas, in all their many forms, wipe out our populations before we do anything. Then, as always, we moan and whine and plead on slave's knee for salvation from the very system that laid the groundwork for what could have remained a tropical depression to develop into a storm.

The article, *Advocate for C. Lee Turner Writes*, written by Lonnie B. Davis, which appeared in the Oct. 19 issue of *The Panther* newspaper, is telling us nothing new. Mr. Davis is attempting to illustrate how the current charge against the drama professor is but a "weapon of mass destruction" being launched at historically black institutions and programs across the country that demonstrate excellence, elevate the minds of our young, and poise them for competition in global economics on all fronts, in all arenas and industries. This is not about C. Lee Turner; this is about the dissolution of any attempts toward institutional power on behalf of black people, people of color, poor people.

Mr. Davis' endeavor in this article is much like that of author Aswad Walker in his book, *Weapons of Mass Distraction*, (note: Distraction not Destruction), where he attempts to enlighten African American people about the techniques and strategies used by government and corporate controlled media to distract our attention from issues relevant to the survival of our people. While none of this is new to the watchers on the wall, to those who keep their ears to the street, Mr. Davis is sounding the emergency broadcast; he is ringing the alarm bell; he is shouting at the top of his voice as Lawrence Fishburne did in Spike Lee's, *School Daze*, to the masses of us, "Wake up!!!!!"

I am tempted to ask the question why is there no outcry; why is the Alumni Association not storming the Bastille; why aren't HBCU drum lines across this country marching to PV; why isn't this issue a headline of every black owned newspaper from Austin to Houston; why weren't HBCU alumni, students, professors, administrators not on stage at the Millions More Movement informing and stirring up the masses on this aspect of the education issue; when the issue of education came up, why didn't they "get on the bus?" I am tempted to ask, but I fully understand that the mere asking is an exercise in futility, for the answer is clear. We are still, in 2005, Willie Lynch negroes, something God didn't create; unlike the Holocaust Jews, we neither healed nor repaired ourselves.

We refuse to see the evil that exists in high places and understand the lengths that evil is capable of going to, to further its own cause of wealth and power, of total domination over all that is good,

which includes life, liberty, and the pursuit of happiness. We sing about it on Sunday morning, but we don't really understand it. We don't want to admit that evil men in high places will move heaven and earth to achieve complete and absolute power over everything that might empower those who it is to their advantage to keep under their control. We read it from the Bible every Wednesday night in bible study; but we are afraid to say it out loud. We charge and convict the Pharisees and Sadducees, but we lock arms with the neo-cons, and the wealth and power elites, afraid of being called a conspiracy theorist, afraid of losing our cut from the tax collector's purse. We have been brainwashed by media and miseducation into believing that to support that which empowers black people is "racist," will segregate us, and will hurt the feelings of our white friends and co-workers who we don't realize are just as disempowered as we are. We have been drugged by the illusion of paychecks and houses in the suburbs and really believe we are a part of American society, while ignorant to the fact that the United States is a corporation much like the Texas Medical Center is a corporation and not a physical location. We trade our children into slavery via apathy and ignorance for a piece of the American pie, for inclusion, for status, for comfort.

One day, the world will speak of us as it does hundreds of other races and cultures; they will ask: What happened to them; why did they give themselves away, their history and their culture, their institutions and their power? Did they not know who they were and why their very presence on the planet was a threat to evil men in high places? Alexis De'Toqueville prophesied it; Frederick Douglass expounded on it; Marcus Garvey tried to stop it; the National Black United Front, the Black Panthers, the Nation of Islam, the Black Christian Nationalists fight it every day on all fronts.

But where are the masses? Where are the politicians and the preachers? Where are the toll takers and the teachers? Where are the cooks and the accountants? Where are the advocates of institutions of power that serve to release the generational curse of Willie Lynch on black people? Where are the advocates of PV and other HBCUs waiting in the wings to succumb to the same weapon of mass destruction?

The wind is howling; the air is growing cold; darkness fills the clouds. There is a storm brewing. Will we wait on the very power system that allowed the environment to decline to a place where would-be tropical storms become category five hurricanes to send us a life jacket? Will we wait until another Hurricane Katrina, disguised as "diversity," disguised as "One America," displaces another segment of our population, wipes out more of our history and culture before we do anything? Or will history repeat itself?

**By Norma J. Thomas**  
Contributing writer for the  
Prophetic Voice

## There's no place like home



**By Nneka Meka**  
Editor in Chief

Ten years from now I will still long for Prairie View. Yes, I complain as much as the next undergrad about fee inflation, financial aid fiascoes, sketchy administrative decisions, and food at the MSC, but at the end of the day there is no place I would rather be.

Welcome back to "The Hill," alumni. However drastic the physical changes of our alma mater's face, the spirit of Prairie View remains. As

you walk the yard during the course of this week, think back on the days this was your home. Remember your devotion to the purple and gold, and take it home with you.

Don't let Homecoming be the only time you think of PV. Thoughts of yard shows you attended at Alumni Hall, football games, and living in a dorm should always stir feelings of nostalgia. Keep Prairie View in your heart, on your mind, and in your checkbook (I'm just being real). We need your support. There are issues undergrads cannot handle alone, make yourselves available to us because we don't have a problem giving you the inside scoop.

Undergrads, I challenge you to approach alumni at one of the various homecoming events just to question them on what life was like when they were here. You may be surprised how much we have in common.

## PURPLE & GOLD POLL

### Are alumni doing enough for PV?



In order for alumni to donate more to the university, the university needs to keep better track of its former students. As a student we need to be kept abreast of what the alumni are actually doing.

**-Angel Porter**  
Sophomore  
Interdisciplinary Studies



The university has to do more for the alumni in order for the alumni to do more for the students. If alumni and the school worked together it would be better for the university as a whole.

**-Gerald W. Cummings**  
Senior  
Marketing



From what I hear, Prairie View doesn't do enough for alumni.

**-Shara Boykin**  
Junior  
Education



No, not really. I mean most people I know who have graduated just go about their business and put Prairie View on the back burner.

**-Micheal Roumo**  
Senior  
Marketing

Kenyetta Allen

## Blue Tigers prove to be no match for Panthers Prairie View earns its second win of the season at Lincoln

By Andrew Roberts  
Panther Correspondent

The Prairie View A&M University Panthers (2-4) captured a victory over Lincoln University (3-5) with a 40-8 drubbing of the Blue Tigers. Prairie View put up some of their most impressive rushing and passing statistics of the season in a contest that was out of reach for Lincoln from the start. Prairie View's defense stifled the Blue Tigers holding Lincoln to zero first half points and a mere eight for the game. The Panthers also recorded their first passing touchdown of the season breaking a drought that was the longest the Panther football team had seen since 2002.

PVAMU initially got on the board with a 21-yard touchdown run by sophomore running back Arnell Fontenot at the 13:23 mark of the first quarter. The touchdown was set up by a 31-yard scamper by running back Darrell Walker, which placed the ball at the LU 20 yard line. Fontenot capped off the Panthers' next scoring drive with a 20-yard touchdown run that increased Prairie View's advantage to 14-0 after a successful Mario Sanchez extra point

attempt with 2:35 left to play in the first quarter.

The scoring onslaught continued deep into the first half as Prairie View added points on a four-yard Kameco Andrews touchdown reception from Micheal Hill (2:35, 1st qtr.), a Chandre Ward safety (2:19, 1st qtr.), a 22-yard Mario Sanchez field goal (5:34, 2nd qtr.) and a 19-yard Anthony Gibson touchdown reception from Hill (4:31, 2nd qtr.). The Panthers went into halftime leading 33-0.

In the second half the Panthers added one more touchdown on a Joe Townsend 14-yard touchdown reception from Hill at the 6:18 mark of the third quarter to put a cap on their scoring for the day at 40. The 40 points scored was Prairie View's largest scoring output of the season.

"I feel like Micheal Hill played well for us offensively," said head coach Henry Frazier III. "He has been very impressive his last two starts and in my opinion he has played the best two games that I have seen him play since I've been here. Our offensive line once again dominated from start to finish. I feel like they have elevated their play the last couple of weeks. Overall, offensively we have made small improvements each week."

Prairie View also made significant improvements in the red zone scoring 6-of-7 times.

"We did a much better job of taking advantage of our red zone scoring opportunities," said Frazier. "In practice we ran our number one offense against our number one defense and I think that helped us in preparing for game situations. I look forward to seeing continued improvement with our third down conversions. On defense we will strive to improve on third downs as well."

Mississippi Valley State, the Panthers' homecoming opponent, presents a balanced attack and currently ranks third in the SWAC in total offense and defense.

MVSU is led by junior quarterback Aries Nelson, who is regarded around the conference as one of the best.

"We didn't get a chance to see Nelson last year due to an injury, so it will be interesting to see how we match up against him," said Frazier. "He is one of the better quarterbacks in the conference. He's right up there with Bruce Eugene of Grambling State and Tavarious Jackson of Alabama State. Our defensive backs will be tested as well as our entire defensive unit."

## Lady Panthers seven-match winning streak ends

By Dustin Daniel  
Panther Correspondent

This past weekend the Prairie View A&M University Lady Panthers volleyball team (11-14) stepped out of conference play to face the Texas-Pan American Lady Broncs (6-13) and the Texas Christian Lady Horned Frogs (13-9).

On Friday, Oct. 21, PVAMU opened against Texas-Pan American, losing their first two matches, 30-17 and 30-20 respectively. The Lady Panthers recorded only one total block, while UTPA accumulated six. UTPA also recorded 39 digs, six more than Prairie View. In the third and deciding game, PVAMU fell 30-15 despite tying UTPA's dig total with 10. The loss put a halt to Prairie View's seven-match winning streak.

The Lady Panthers squared off with TCU on Saturday, Oct 22. Statistically, the Lady Panthers made tremendous strides against the Lady Horned Frogs. Junior Brandie Johnson recorded 13 digs, while sophomores Shannon Harrison and Meghan Orebo recorded 11 each.

PVAMU recorded 50 digs in the three games, eight more than TCU. However, that wasn't enough to reverse their fate, as they suffered three defeats losing 30-22, 30-26, and 30-14.

"We will make adjustments to fix the problems we are having offensively and defensively," said Lady Panther head coach Alicia Pete. "It will start in our practices. Our blocking was low versus UTPA and TCU. We have to improve our blocking if we want to be successful."

Prairie View will return to the court on Friday, Oct. 28 in a make-up contest against Southern University. The game will be played at 5 p.m. in the New Gymnasium.

## Panthers host Delta Devils for Homecoming 2005

By Dustin Daniel  
Panther Correspondent

The Prairie View A&M Panthers (2-4, 0-3 SWAC) are seeking their second consecutive homecoming victory under the guidance of head coach Henry Frazier III. However, accomplishing that goal in 2005 will be significantly more difficult than last year, as the Panthers will face an explosive Mississippi Valley State Delta Devils (4-3, 3-3 SWAC) team that is seeking their third consecutive victory.

After cruising to victory over Paul Quinn in the season opener, the Panthers suffered defeats to perennial SWAC powerhouses Grambling State, Southern, Alcorn State, and Alabama State, who have a combined record of 17-9. In those four losses, Panthers opponents averaged 36 points per game.

Last year when both teams met, Prairie View jumped out to a two-touchdown lead in the first quarter, but squandered it on the way to a tough and hard fought 42-34 loss. Quarterback Chris Gibson completed 12 passes for 112 yards in a losing effort.

If the Panthers triumph over MVSU, they will equal their win total from last season, as well as inch closer to the .500 mark.

## Upcoming Sporting Events

### Football

10/29 vs. Mississippi Valley State (Homecoming) 5:30 p.m.

### Volleyball

11/1 vs. Texas A&M C.C. 6 p.m.  
11/3 vs. Grambling State 5 p.m.  
11/11-12 SWAC Tournament  
Houston, TX TBA

### Soccer

10/28 vs. Grambling State University 4 p.m.  
10/30 vs. Pine Bluff 12 p.m.  
11/3-6 SWAC Tournament

### Baseball

10/28 Alumni Game 6 p.m.

## SWAC Football Standings

### East

Alabama State	6-0, 6-1
Alabama A&M	3-2, 5-2
Alcorn State	3-2, 4-3
Miss. Valley State*	3-3, 4-3
Jackson State	2-3, 2-5

### West

Grambling State	5-0, 5-1
Southern	2-4, 2-4
Ark Pine Bluff	1-4, 1-6
Texas Southern	1-5, 1-5
<b>Prairie View</b>	<b>0-4, 2-4</b>

\*Prairie View's next opponent

**Are you  
undecided, undeclared,  
uncertain that your current major  
is the right fit?**



Find the answers at the  
**Majors' Fair!**

**Tuesday, November 1, 2005**

**9:00 AM - 3:00 PM**

**Student Center Ballroom**

**For special assistance with disabilities call 936-857-2610**

## MVSU 35, Texas Southern 28

Associated Press

ITTA BENA, Miss. — Aries Nelson threw two touchdown passes and ran for another score as Mississippi Valley won its homecoming game against Texas Southern 35-28 on Saturday.

Nelson hit Tyron Timmons for a 42-yard pass early in the first quarter then scored on a 15-yard run to give MVSU (3-3, 2-3 Southwestern Athletic Conference) an early lead.

Nelson connected with Carlton Cotton on a 49-yard scoring pass to put Valley up 21-0 at the half.

Texas Southern (1-5, 1-4 SWAC) got on the board in the third quarter on an 8-yard run by Tino Edgecomb. Texas added three unanswered touchdowns in the fourth quarter, including Robert Napier's 37-yard interception return, but couldn't catch up.

### Brooks Landing Apartments

24444 Richards Road

936-857-9533

[www.brookslandingapts.com](http://www.brookslandingapts.com)

One mile from Campus,

1 Bed \$635.00

2X2 Bed \$495.00

All Bills Paid/Available Now!!

### HOMES FOR SALE

100% FINANCING

No closing Costs

FREE CREDIT REPORTS

Call Now

Peak Realty

(979) 921-9530

Bill's Seafood Kitchen

203 Bremond (Exit 1488)

(979) 826-3568

**\$2.99**

3 pc Whiting & Fries  
10 pc Catfish Nuggets & Fries  
8 Wings & Fries  
1 Porkchop & Fries

**\$3.99**

5 pc Wings, 6 pc Catfish  
Nuggets, & Fries

**\$4.99**

15 Shrimp & Fries  
3 pc Drum & Fries  
6 Shrimp, 1 piece Catfish & Fries

\*\*\* ASK FOR SPECIALS \*\*\*

# BET★ BLACK COLLEGE TOUR

Presented By



PANTENE

ULTRA SHEEN

OLAY

[WWW.BET.COM/BLACKCOLLEGETOUR](http://WWW.BET.COM/BLACKCOLLEGETOUR)

Interactive Fun • Performances • Music • Games

TENNESSEE STATE UNIVERSITY • JACKSON STATE UNIVERSITY • CLARK ATLANTA UNIVERSITY • BETHUNE-COOKMAN COLLEGE  
GRAMBLING STATE UNIVERSITY • TUSKEGEE UNIVERSITY • ALABAMA STATE UNIVERSITY • FLORIDA A&M UNIVERSITY  
VIRGINIA UNION UNIVERSITY • NORTH CAROLINA A&T STATE UNIVERSITY • PRAIRIE VIEW A&M UNIVERSITY  
TEXAS SOUTHERN UNIVERSITY • JOHNSON C. SMITH UNIVERSITY • SOUTH CAROLINA STATE UNIVERSITY

## PRAIRIE VIEW A&M UNIVERSITY

THURSDAY NOVEMBER 3, 2005

NOON-4PM

STUDENT CENTER LAWN

BET★

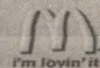


verizon wireless  
We never stop working for you!

SOUTHWEST  
A SYMBOL OF FREEDOM



UNIVERSAL MOTOWN  
RECORDS GROUP



PEPSI

GRASSROOTS  
PROMOTIONS, LLC

BET★ BLACK COLLEGE TOUR

Things to DO

BET★ BLACK COLLEGE TOUR

12:00P - 12:15P **BET★ JUMPOFF** ✓

12:30P - 1:00P **SINGER'S SPOTLIGHT** ✓

1:00P - 1:30P **POETRY CONTEST** ✓

1:30P - 2:00P **FLOW** ✓

2:00P - 2:30P **CONCERT** ✓

2:30P - 3:00P **3-POINT SHOOTOUT** ✓

3:00P - 3:45P **2-ON-2 HOOPS COMPETITION** ✓

P&G BEAUTY EXPO

All Day

BET★ VIDEO SKILLZ CHALLENGE & GAME TENT



FOOTBALL TOSS



JUMP & FLY

Career Center / Free Samples / Giveaways

# Buying into brotherhood and sisterhood



By Alanna Jones  
L/H & A/E Editor

This week the lifestyles/ health and arts/ entertainment section of *The Panther* dedicates its pages to Greek life. With the membership intake processes currently taking place across campus, it is important to highlight what Greek life is and how its roots were planted among African Americans. *The Panther* will also be highlighting each Greek organization, interviewing one member from each, to showcase the depth of each brotherhood and sisterhood.

While it is nice to smile upon the legacy that all of the nine black Greek sororities and fraternities have laid, there is a more serious issue the spotlight needs to shine on; hazing. Brandie Terrell, a writer for *The Panther*, has written an article that defines hazing among black sororities and fraternities titled *What's the True Meaning Behind Hazing?* (p.14)

Terrell states that "hazing is any action or activity which does not contribute to the positive development of a person or a situation that intentionally or unintentionally endangers a student for admission into an affiliation with any student organization." With that said, why do black sororities and fraternities continue to "degrade" their own sisters and brothers into the constant whirlwind of belittlement and cruelty?

"Girl [Man], I can't wait to cross into this organization, but you better believe I ain't stooping to anyone's

level and kissing people's butts," is the typical statement that many potential applicants make as they search for the organization in which they want to become members. Although these may be the words that spill out of their mouths, these are the same people who are waiting in seminar lines five hours early, buying big brothers/big sisters lunches with their parents' money, praising current members for the letters and colors they wear, and going out of their means to become a part of the same greatness only to have backs turned in their face.

On the other hand, you have current members who look down on the eager applicants who respect them as if they can walk on water. Why do members feel as if letters and colors have made them the "high hope" of black society? Why have they set themselves apart from the "regulars" as if they did not have to go through the same

struggle? Aside from Greek sisterhood/brotherhood, we are a black sisterhood/brotherhood, so why do we choose to beat one another down? Why isn't the intelligence and courage that applicants have already shown by simply coming to seminars with interest in a particular organization edified?

So what is hazing? Hazing is exactly how Terrell defines it. It is not contributing to the framework that builds a person up to become a better member of society. True, the organization wants members who have sacrificed something out of their normal lives to feel worthy of becoming a part of the history and dedication that has caused them to be there in the first place: NEWSFLASH: that is called "pledging." Just as the Alpha Phi Alpha states in Terrell's story, "There is a difference between hazing and pledging." An alumnus who graduated from PV more than 20 years ago and is also

a member of the Omega Psi Phi Fraternity, Inc., says that, "It was fun pledging. I never felt like my big brothers slandered my character in any kind of way. Nowadays it has gotten out of hand. If it was like it is today when I decided to join my organization, I would not be a member today."

To insult one's intelligence in becoming a member of an organization, which has been founded on the basis of scholarship, leadership, education, community service, and etc., was not in the purpose that the founders of the "divine nine" had in mind. If the founders of these organizations knew what was going on today, how do you think they would feel? Better yet, one day when your children go to college, will you tell them it is OK to let someone beat their esteem down? Or, will you tell them it is OK to treat their own race like they are not one and the same? Think about it.

## Black Greek organizations: the divine nine

By Derreka Shelton  
Panther Staff

Black Greek letter organizations are well known among many college campuses and around the world.

The nine Pan-Hellenic organizations, also known as the "divine nine," include Alpha Kappa Alpha Sorority, Delta Sigma Theta Sorority, Zeta Phi Beta Sorority, Sigma Gamma Rho Sorority, Alpha Phi Alpha Fraternity, Kappa Alpha Psi Fraternity, Omega Psi Phi Fraternity, Phi Beta Sigma Fraternity and Iota Phi Theta Fraternity.

After graduation and many years after students involved in these organizations become alumni, they still wear their paraphernalia proudly and strive to uphold the organization's principles and purposes daily. While providing com-

munity service and promoting academic excellence are only a few aspects these organizations aim to achieve, many people wonder why and how these organizations were established.

Black fraternities and sororities were founded to initially uplift themselves collectively as a group through times of turbulence and brutal discrimination. In the early 1900s, African Americans were not given privileges as their white counterparts were in terms of social events. Therefore, the black Greek-letter organization was formed to provide a positive atmosphere and a social support group to allow members to rise above the oppression that they were faced with on a day-to-day basis.

Also, these organizations were founded to render service to humanity. All of the Greeks, despite their many differences, principles

and goals, are evolved around community service which is the means of empowering the world one organization at a time.

A brief history of the divine nine:

1. Alpha Phi Alpha Fraternity, Inc. was the first fraternity established in 1908 on the campus of Cornell University.

2. Alpha Kappa Alpha Sorority, Inc. was the first black Greek-letter sorority established on the campus of Howard University in 1908. Its 20 founders set Alpha Kappa Alpha's roots around the principles of scholarship, leadership, and success.

3. Kappa Alpha Psi Fraternity, Inc. was the second fraternity established on April 15, 1911 on the campus of Indiana University. Kappa Alpha Psi was the first organization named Kappa Alpha Nu. Its founding principles are to unite,

encourage, promote, assist, and inspire.

4. Omega Psi Phi Fraternity, Inc. was the third fraternity established on Nov. 17, 1913 on the campus of Howard University. Its three founders based its principles on manhood, scholarship, perseverance, and upliftment.

5. Delta Sigma Theta Sorority, Inc. was the second sorority that was established on the campus of Howard University in 1908. Founded by 22 founders (who were actually AKAs before they branched off and started their own organization), it was established on the principles of sisterhood, scholarship, and service.

6. Phi Beta Sigma Fraternity, Inc. was the fourth fraternity established on Jan. 9, 1914 on the campus of Howard University. Phi Beta Sigma's principles are brotherhood,

scholarship, and service.

7. Zeta Phi Beta Sorority, Inc. was the third sorority established on Jan. 16, 1920, also on the campus of Howard University. The five founders established it on the principles of scholarship, sisterly love, and finer womanhood.

8. Sigma Gamma Rho Sorority, Inc., was the fourth and only sorority founded at a predominantly white university. It was established on Nov. 12, 1922 on the campus of Butler University. Its principles are sisterhood, scholarship, and service.

9. Iota Phi Theta Fraternity, Inc. was the fifth and final fraternity established on Sept. 19, 1963 on the campus of Morgan State University. It was founded on the principles of scholarship, leadership, citizenship, fidelity, and brotherhood.

# PV Greek Life... "I'm an Alpha"

There are nine active Greek organizations on campus: Alpha Phi Alpha, Alpha Kappa Alpha, Kappa Alpha Psi, Omega Psi Phi, Delta Sigma Theta, Phi Beta Sigma, Zeta Phi Beta, Sigma Gamma Rho, and Iota Phi Theta. The Panther would like to inform readers how students can go to class, socialize, be active members of an organization, and hold a job. Therefore, each week the Panther will showcase a member of each of the nine active Greek organizations on campus.

**By LaGloria Wheatfall**  
Panther Correspondent

The first intercollegiate Greek-letter fraternity established for African Americans was founded at Cornell University in Ithaca, NY, by seven college men who recognized the need for a strong bond of brotherhood among African descendants in this country.

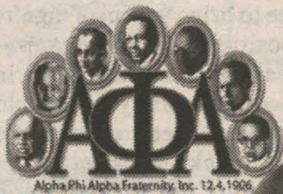


Photo by Marques Allen

**Standing proud.** Raymond Kelley, senior computer engineering and technology major.

Originated on Dec. 4, 1906 by "The Jewels," Alpha Phi Alpha Fraternity Inc., continues to embrace the principles of their foundation which are scholarship, fellowship, good character, and the uplifting of humanity.

Raymond Kelley, a 22-year-old senior computer engineer and technology major, is a proud member of the Eta Gamma Chapter of Alpha Phi Alpha Fraternity on the campus of Prairie View A&M University.

Kelley said, "To me, it was this organization or nothing else, Greek at least...it wasn't a choice."

Kelley became a member in the fall of 2003 under the line name "Ice Pick"- #9, and holds office as the chapter's historian.

Since becoming a

part of Alpha Phi Alpha, Kelley noticed that his social life has increased. He stated, "It definitely makes you more noticeable...it's like eyes are always on you."

Not only does he gain a social boost in becoming a part of Greek life, there are a lot of community involvements that make Kelley a true Alpha man.

Volunteer activities such as the Highway Clean-up, Adopt A Family, and Go To High School Go To College, give him a sense of humane contribution that is inimitable.

It is known that if you are looking to become a part of a certain sorority or fraternity, research must be done to learn about the history, impact, and the reputation of the organization on and off campus. Kelley advised students to "get to know the organization... what I mean: don't look at just what you see on

campus, because we do a lot of work that impacts the community... but look into their involvements overall."

Kelley also said that becoming a part of Alpha Phi Alpha has opened up a lot of doors to his future career endeavors, and the brotherhood that I've gained from this organization is irreplaceable.

There are many mottos that come to mind that Kelley lives by, but the one that best fits him is his organization's motto, "First of all, servants of all, and we shall transcend all." After Kelley graduates, he plans to attend graduate school and eventually open his own business.

"Mackin' packin' and never lackin'" will be the words that Kelley will continue to value.

# He loves me... he loves me not Shedding light on domestic violence awareness month

**By LaCheryl E. Whitlow**  
Panther Staff

It seems like only yesterday he fell in love with you, he wants to see you all the time, and keep tabs on you. While this is all overwhelming and slightly flattering in the beginning, you start to realize he has a couple of questionable qualities. Like his thoughts on why a woman should be at home and the man should take control of the household. He starts to over react to little things and doesn't take your opinion seriously. If your boyfriend exhibits at least two of those characteristics, he could potentially be an abuser.

According to Law. Com domestic violence is "the continuing crime and problem of the physical beating of a wife, girlfriend or children, usually by the woman's male partner (although it can also be female violence against a male)." Statistics have shown that one-third of young adults become involved in an abusive relationship during their high school or college years. This was the case for a 21-year-old

junior (name withheld) she said, "When I got to college my boyfriend of four years became very jealous, he wouldn't let me out of his sight, and then that's when the hitting started."

Unfortunately, many women who are abused seem to think that abuse is a form of love. They blame themselves for the abuse, make excuses for the one who abuses them, and have statistically been shown to remain in detrimental relationships for a long period of time. The unnamed student added, "At first I did think it was my fault because he would always say that his major was very demanding and that he wasn't going to let me get in the way of his dream."

In many cases low self-esteem, fear of what can happen if he leaves, and the fact that a woman can become co-dependant on her abusive partner are some of the primary reasons that women don't get out of these relationships.

There are other forms of abuse along with physical assault. Abuse can be emotional/verbal, where you have

a mate who is telling you things like, "you are worthless, you are never going to be more than you are." Sexual abuse on the other hand involves your partner manipulating you into having sex, or requesting sex after he has hit you.

Contrary to popular belief, there are men who are also abused. A male student (name withheld) said, "My ex had a really bad temper and as the weeks went by it escalated to her slapping and trying to scratch me. I never hit her back because I was taught not to hit women." While this may seem surprising, the issue of men being abused is not as explored or reported as women being abused by men.

It's often been said that love hurts, however abuse is not love. If you or someone you know is being abused, get help as soon as possible. No one deserves abuse whether it is physical, emotional, sexual or any other way. It has now been recognized as an antisocial mental illness, which should require the abuser and the victim to seek professional help.

## Do I look overweight?



**Prof. Dennis E. Daniels, MPH, Dr. PH and Theresa Okeyo-owuor**  
Medical Correspondents

According to the National Center for Health Statistics, part of the Centers for Disease Control and Prevention, 65 percent of U.S. adults aged 20 years and older are either overweight or obese, and approximately 30 percent of adults are obese. Conditions related to being overweight contribute to 300,000 deaths each year in America and are second only to smoking. Out of these, African American women are deemed the fattest of all obese adults (National Pharmacy Network, 2001).

How does a person find out he/she is overweight or obese? Framingham researchers assessed participants' body mass index (BMI), a standard measure of weight relative to height, which is an indicator of total body fat.

A BMI of 18.5 to 24.9 kg/m<sup>2</sup> is considered a normal, or healthy, weight for adults. Overweight is a BMI of 25 to 29.9 kg/m<sup>2</sup>, and obesity is a BMI of 30 kg/m<sup>2</sup> or higher. To calculate your BMI:

1. Multiply your weight in pounds by 704.
2. Multiply your height in inches by itself.
3. Divide the result of step one with the result in step two.

Being overweight increases the likelihood of developing: type 2 diabetes, high blood pressure, heart disease, stroke, breathing problems such as asthma and sleep apnea, some cancers, osteoarthritis, and gall-bladder disease. Obesity is associated with these conditions as well as with early death. Research has shown that even a small weight loss can help people who are overweight or obese lower their risk of developing many of these

conditions.

When trying to lose weight, undergo a change of lifestyle. Diet control and exercise are often recommended as weight loss initiatives. Other methods for weight loss include surgery or weight loss medications. You can do a self-assessment, taking into account your weight (Body Mass Index (BMI) and waist size), lifestyle pattern (exercise, diet and smoking habits), and medical history. The best thing to do before starting on your weight loss strategy is to see a physician and seek advice on how to go about it.

The information for this article was compiled from: <http://www.nih.gov/news/>, [http://win.niddk.nih.gov/publications/health\\_risks.htm](http://win.niddk.nih.gov/publications/health_risks.htm), The Association of Black Nursing Faculty (ABNF) Journal, and the American Obesity Association.

### P.V. Student Housing

Now Leasing  
3 Bedroom Homes  
\$375 / per month

24687 Richards Rd.  
PEAK REALTY  
979-921-9530

# Finding a place of our own: the creation of black sororities and fraternities

By Cory Donley  
Panther Contributor

In an article written in *The Alternative Orange* written by Robert Plotkin, the brothers of Sigma Alpha Epsilon held what was deemed as a jungle theme party on the campus of Texas A&M University. In order to get the full effect of the theme, the big brothers had the pledges blacken their faces, dress in grass skirts, carry spears, and run throughout the house hunted by men dressed in military fatigues. This form of racial insensitivity among Caucasian fraternities has been an infamous tradition since the founding of the first fraternity in the U.S. Is this insensitivity the reason for the creation of black Greek letter organizations? Black Greek letter organizations became the movement for African-American males to form networking relationships and fraternal bonds for their race, which they could not get from anywhere else.

According to a homepage for black Greek letter organizations, it is explained that in the beginning, black Greek letter organizations were created to provide brotherhood/sisterhood for African-Americans attending college. This is mainly

due to the fact that they, African-Americans, were not welcomed in the other established Greek letter societies so they created their own. The brothers of Alpha Phi Alpha are given credit for being the first and oldest black Greek letter organization to successfully expand into new chapters. Sigma Pi Phi was founded under Mr. Henry M. Minton in Philadelphia, Pennsylvania to bond Negroes within the professional ranks of society. The brothers of Alpha Phi Alpha are given the privilege of being the first organization implemented in the Pan-Hellenic Council which was formed as a governing body to aid organizations in a bond of common causes. Next to follow were the brothers of Kappa Alpha Psi and Omega Psi Phi both in 1911. In 1914 the fraternity which was founded on the principles of brotherhood, scholarship, and service was produced. Phi Beta Sigma emerged. It was much later in 1963 that the brothers of Iota Phi Theta completed the council.

Robert Plotkin provides his theories in a university news article that discusses discrimination among Greek letter organizations. Plotkin

explains how the make up of the student body of universities changed, and how Greek letter organizations began adopting official policies discriminating against African-Americans, Jews, Asian-Americans, and other minorities. In fact, according to Plotkin, the national policy of Lambda Chi Alpha was allowed to pledge only members of the Caucasian race who are of non-Semitic blood. The principles of Christianity were valued with the utmost intensity, and Lambda Chi Alpha rejected those with one-eighth of proscribed blood. These rules were more restrictive than Hitler's definition of the Semite in his infamous Nuremberg Laws, where his edicts applied only to those who had one-fourth or more of ancestry identifiable as Jewish. It was in the 1950s when these discriminatory policy believers began suspending their chapters for pledging non-Aryans.

According to Oxford American dictionary the word Aryan means importantly (in Nazi ideology) a Caucasian not of Jewish descent. It was these types of discriminatory standards which caused African-Americans to forge their own identity as Greek letter organizations. Plotkin explains how the president of the National Interfraternity Conference, David A. Embury said in 1947 that

people should stop shivering at the word discrimination. I love the discriminating tongue, the discriminating eye, the discriminating ear, and above all the discriminating mind and soul. The person for whom I can find no love and no respect is the indiscriminate person. To be indiscriminate is to be common, to be vulgar.

Over time with the common knowledge of discriminating values found in most Greek letter organizations along with the correlation of the increase in minority enrollment in universities, minorities thus began to establish their own fraternities. In *The Alternative Orange*, Plotkin writes how Phi Kappa Sigma was formed at Brown University in 1889 as a fraternity for Catholic students. In the *College Student Journal*, Robert Mathiasen states that Greek letter organizations constitute a visible and powerful part of student culture: At most fraternity initiation ceremonies, new members are challenged to be of good character and to be loyal to the other members of the society. So why is it that this same challenge of good character and loyalty cannot be extended to all mankind in the form of a fraternal bond?

Kevin Michael Foster

explains in his *Race, Ethnicity and Education* journal that with the constant progress of time, black students maintained their own system of fraternities and sororities, by having favorite gatherings and using spaces on campus, coordinating extracurricular activities designed to appeal to one another, and in other ways operate as a distinct sub-community of the student body at large. With these new opportunities at fraternal brotherhood and relationships, African-Americans were given the chance to bring a form of dignity and positivity to their organizations and accomplishments in the face of adversity that would have before been denied. To Foster, black Greek letter organizations are formed upon principles of providing leadership and support to black people generally. It is these principles that allow black Greek letter organizations to gain a form of prestige that many people may consider as status honor.

Sources used in the consumption of this article are as follows: gladstone.uregon.edu10, College Student Journal (Robert Mathiasen), *Race, Ethnicity, and Education Journal* (Kevin Michael Foster), and an article in *The Alternative Orange* (Robert Plotkin, 2004).

# What's the true meaning behind hazing?

By Brandie Terrell  
Panther Contributor

There is no denying that for some students, a major reason to attend college is to become a member of a Greek organization. Students join these organizations for various reasons like family legacies, as well as the desire to develop long lasting brotherhood/sisterhood. For some students there is no mountain high enough to keep them from attaining certain letters. For these students, hazing may not be an issue. However, because of hazing, Greek organizations are being frowned

upon, and gradually losing their essence in the black community.

Hazing is defined by askjeeves.com as: a broad term encompassing any action or activity which does not contribute to the positive development of a person. Hazing can also be defined as any action or situation which intentionally or unintentionally endangers a student to gain admission into an affiliation with any student organization.

In recent times, hazing has become a serious issue on college campuses across the nation. Students

have been severely injured, and even killed for the right to wear letters across their chests. As a result many organizations have been sued as well as banned from certain universities. Many may wonder when Greek life became a matter of life or death.

Calvin E. Dutton, a member of Kappa Alpha Psi, feels that, "Hazing causes students to lose focus on the organization's primary purpose. It may also cause an organization to lose the trust of its school and community."

For some Greeks, hazing is a matter of gaining respect from other organizations. Among black universities the

term "paper" is used for those organizations who are assumed to have done nothing more than sign a piece of paper to earn their letters. How do these organizations attain respect while not crossing the line when it comes to the membership intake process? In the opinion of certain member of Alpha Phi Alpha, "There is a difference between hazing and pledging."

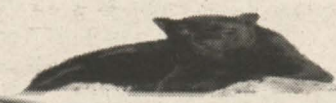
Black Greek organizations were founded by those who wanted to have a positive impact in the black community. However, brotherhood/sisterhood was also a factor, and many black Greeks be-

lieve that some sort of pledging is necessary to build bonds that are long lasting and true. Pledging does not involve any type of physical or mental harm to individuals, which is what differentiates it from hazing.

Pledging is a commitment made by a candidate for membership, and yes, Greek organizations want their members to be worthy of wearing their letters. Resorting to hazing reveals the unworthiness of the organization as opposed to the candidate, and also causes the black Greek community to gradually lose its significance in black college life.

# Events for October 27-November 2, 2005

Thursday, 10/27	Monday, 10/31	Tuesday, 11/1	Wednesday, 11/2
<b>HOMECOMING</b> Showtime At The Apollo 7 p.m. Baby Dome	Back To Basics 10 a.m.-5 p.m., MSC  Sigma Gamma Rho Information Handouts 10 a.m.-1 p.m., MSC  Gamma Sigma Sigma Handbills 11 a.m.-3 p.m., MSC  College of Business Social Mixer 3 p.m.-5 p.m. Outside Hobart Taylor  Sociology Club Meeting 5 p.m.-6 p.m. Woolfolk, Rm. 204  Phi Beta Sigma Organization Meeting 5 p.m.-7 p.m. Delco, Rm. 327  CAB Haunted House 5 p.m.-11 p.m. Animal Science	University College Recruitment 8 a.m.-2 p.m. Hobart Recital Hall  Ailey II 8 a.m.-11 p.m. MSC Auditorium  University College Celebration of Academic Excellence 9 a.m.-3 p.m. MSC Ballroom  Criminal Justice Club 4 p.m.-5 p.m. Woolfolk, Rm. 104  Teacher Certification 5 p.m.-9 p.m. NSCI, Rm. A103  SIFE 5 p.m.-8 p.m. NSCI, Rm. 104  Beta Beta Beta 5 p.m.-6:15 p.m. NSCI, Rm. 106  CSO 5:15 p.m.-7 p.m. MSC, Rm. 203  African Students Association 6 p.m.-7 p.m. Banks, Rm 204  Alpha Kappa Alpha 6 p.m.-9 p.m. NSCI, Rm. A101  Gamma Phi Delta 6:30 p.m.-7:45 p.m. Chapel  Gamma Sigma Sigma 6:50 p.m.-10 p.m. NSCI, Rm. 122  Church of Christ 7 p.m.-8 p.m. Delco, Rm. 327  Zeta Phi Beta 7 p.m.-10 p.m. Banks, Rm. 202  Omega Psi Phi 7:10 p.m.-10 p.m. University College Auditorium  BSM, Chapel 7 p.m.-10 p.m.	Criminal Justice Club 10 a.m.-2 p.m. MSC Ballroom  Gamma Sigma Sigma Food and Clothing Drive 11 a.m.-3 p.m., MSC  NAACP Membership Drive 12 noon-2:30 p.m.  CAB, Hump Day 12 noon-2 p.m., MSC  Phi Beta Sigma 5 p.m.-7 p.m. Delco, Rm. 327  Urban Reader's Association 5:45 p.m.-10 p.m. Library, Rm. 108  National Society of Collegiate Scholars 6 p.m.-10 p.m. NSCI, Rm. A101  Blackstone Pre-law Society 6 p.m.-7 p.m. Woolfolk, Rm. 103  Alpha Phi Alpha 6 p.m.-10 p.m. Banks, Rm. 208  Miss Prairie View 6:30 p.m.-9:30 p.m. University College Auditorium  Sigma Gamma Rho 7 p.m.-9 p.m. NSCI, Rm. 104  Delta Sigma Theta 7 p.m.-11 p.m. MSC Auditorium  FOCCS 7 p.m.-9 p.m. Chapel  Omega Psi Phi 7:10 p.m.-8:10 p.m. NSCI, Rm. A103
<b>Friday, 10/28</b> <b>HOMECOMING</b> Mock Funeral/ Pep Rally/ Bonfire 5:30 p.m.  Comedy Show and After Party 8:00 p.m. Baby Dome	<b>Saturday, 10/29</b> <b>HOMECOMING</b> Class of 1955 Reception 1 p.m.-6 p.m. MSC Ballroom  Naval ROTC Homecoming Flyover 5:30 p.m.-6 p.m. Football Field	<b>Sunday, 10/30</b> Gamma Sigma Sigma Founder's Day Program 3:50 p.m.-6 p.m. Chapel	



Panther Poetry Lounge

## Simple Luxuries

By Jamyen Robinson

I can't tell you verbally  
Because my tongue  
Has been crippled to speak in  
Generality

If I could give myself a color  
It would be earth-toned fidelity

Generosity the theme  
Serenity the dream

I've been keeping it in  
For so long  
'Cause communication isn't  
Speaking to me

But give me a pencil to stretch out a word  
And the paper will start talking to me.



1. Who misspelled "Panther" on the first floor of the MSC?
2. Didn't they know they were supposed to press "spell check" first?
3. Better yet, aren't they in college and should know how to spell already?
4. If PV was founded in 1876 and it is 2005 now, why are we celebrating 130 years?
5. Aren't we celebrating a year too early?
6. What happened to math 101?
7. Didn't administration raise the educational standards this year?
8. Why are football players walking around with nappy hair all over their heads?
9. Who ran to their rooms when the fireworks started thinking the Dallas people arrived?
10. Simply put, what fireworks?
11. Did they get a deal on the Christmas colors for fireworks, and whose uncle got hired to light them up?
12. Which freshman is making false claims in being from New Orleans?
13. Is he trying to get a FEMA check to pay for his tuition?
14. Instead of spending money to try and make homecoming better, why don't we use that money to cut checks for tuition?
15. Better yet, why don't we use the money that is being wasted on the campus police force?
16. Why are you waiting by the phone?
17. Don't you know the organization you worked so hard to get in isn't going to call you, and you've been getting punked all of this time?
18. Didn't you read the MIP form; they can only cross 50?
19. Is there even a question for the freshman king?
20. What do you think?

This is for **entertainment only**. The questions submitted are not the views of **The Panther**. Want to tell us what you think? Please bring your comments and questions to Rm. 219 MSC or e-mail us at [panther@pvamu.edu](mailto:panther@pvamu.edu). Questions are printed at the discretion of **The Panther**.



**\$600 Group Fundraiser Bonus**

4 hours of your group's time PLUS our free fundraising programs EQUALS \$1,000-\$3,000 on earning for your group. Call TODAY for up to \$600 in bonuses when you schedule your fundraiser with Campus Fundraiser. Contact Campus Fundraiser, (888) 923-3238, or visit [www.campusfundraiser.com](http://www.campusfundraiser.com)

**Brooks Landing Apartments**

24444 Richards Road

936-857-9533

[www.brookslandingapts.com](http://www.brookslandingapts.com)

One mile from Campus,

1 Bed \$635.00

2X2 Bed \$495.00

**All Bills Paid/Available Now!!**

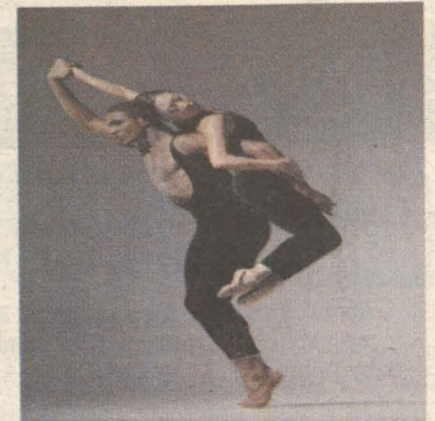
**AILEY® II**

SYLVIA WATERS, ARTISTIC DIRECTOR  
Troy Powell, Associate Artistic Director

Memorial Student Center  
Auditorium  
Tuesday, November 1, 2005  
7:00 PM

Sponsored by

The Office of Student Activities & Leadership  
Panther Cultural Series



Ailey II company members James A. Pierce III and Julie Fiorenza  
Photo by Eduardo Patino.

**TICKETS:**

**\$3 student w/ID**  
**\$10 general admission**

For more information, call (936) 857-2018



Ailey II company members. Photo by Eduardo Patino.

"Ailey II is universally renowned for merging the spirit and energy of the country's best young dance talent with the passion and creative vision of today's most outstanding emerging choreographers."  
AileyII's 2005-2006 National Tour is sponsored by MetLife Foundation.

**AN AMERICAN REVOLUTION™**

PRAY THE COACH DOESN'T SEND US IN.



Aggie-Eagle Classic: N.C. A&T vs. N.C. Central	September 5, 2005	Raleigh, N.C.
St. Louis Gateway Classic: Univ. of Arkansas-Pine vs Tuskegee Univ.	September 24, 2005	St. Louis, MO
Alabama A&M vs. Texas Southern	October 1, 2005	Huntsville, Ala.
Southern vs. Alabama A&M	October 8, 2005	Baton Rouge, La.
Florida A&M vs. Norfolk State	October 22, 2005	Tallahassee, Fla.
Morehouse College vs. Clark Atlanta	October 22, 2005	Atlanta, Ga.
Grambling State vs. Texas Southern	October 29, 2005	Grambling, La.
Prairie View A&M vs. Mississippi Valley State	October 29, 2005	Prairie View, Texas
Tennessee State vs. Eastern Illinois	November 5, 2005	Nashville, Tenn.
Capital City Classic: Alcorn State vs. Jackson State	November 19, 2005	Jackson, Miss.

[chevytailgate.com](http://chevytailgate.com)

The Chevrolet Emblem is a registered trademark and Chevy is a trademark of the GM Corp. ©2005 GM Corp. Buckle up, America!