

Prairie View A&M University

Digital Commons @PVAMU

PV Panther Newspapers

Publications

11-17-1989

Panther - November - 1989 - Vol. LXVII, NO.6

Prairie View A&M University

Follow this and additional works at: <https://digitalcommons.pvamu.edu/pv-panther-newspapers>

Recommended Citation

Prairie View A&M University. (1989). Panther - November - 1989 - Vol. LXVII, NO.6., *Vol. LXVII, NO.6*
Retrieved from <https://digitalcommons.pvamu.edu/pv-panther-newspapers/308>

This Book is brought to you for free and open access by the Publications at Digital Commons @PVAMU. It has been accepted for inclusion in PV Panther Newspapers by an authorized administrator of Digital Commons @PVAMU. For more information, please contact hvkoshy@pvamu.edu.



Survey Sez!

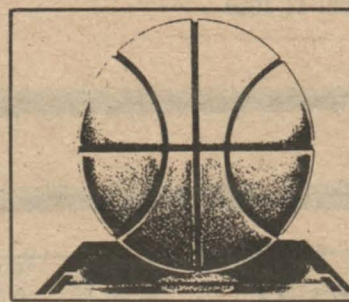
Alumni Hall rates poor in dining students say.

LIFESTYLES

Beating Odds

Cerebral Palsy victim Mary Kelner lives life fully.

LIFESTYLES



In Your Face

Roundball preview of men's and women's season.

SPORTSWEEK

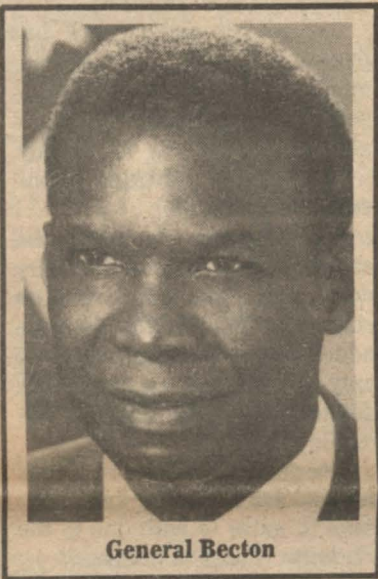
The Panther

Vol.67, No.6

Friday, November 17, 1989

Prairie View A&M University

Becton named president of PV



General Becton

From University Releases

Julius W. Becton, Jr., whose public service career included two key federal positions after rising to the rank of lieutenant general in the Army, has been named president of Prairie View A&M University, his alma mater.

Becton, who takes office Dec. 18, was the unanimous choice of the Texas A&M University System Board of Regents (TAMUS). The regents formally approved his appointment Monday after receiving a

report earlier in the month concerning the finalists of a nationwide search for a successor to Dr. Percy Pierre. Dr. Pierre relinquished the presidency last spring to move into a new endowed engineering professorship.

Dr. Milton R. Bryant has served as interim president during the search and will return to his previous position as the university's vice president for academic affairs.

Regents Chairman William A. McKenzie said Becton was the choice of the board after his name emerged from among

more than 100 nominees and candidates considered in various stages of the six-month nationwide search. The selection process included recommendations from an advisory committee comprised of Prairie View A&M faculty, staff, students and alumni, among others.

"Gen. Becton's varied background, experience and skills eminently qualify him for the position of president of Prairie View A&M University," McKenzie said. "Accordingly, I am delighted that he

has agreed to accept the challenge of leading the university into a new era of excellence, building on the solid foundation laid by his predecessors."

"I look forward to the challenge of leading Prairie View A&M University into a new era of excellence and working with The Texas A&M University System Board of Regents, Chancellor Adkisson and members of his staff, as well as with the students, alumni, faculty and administration of Prairie View A&M," Becton said.

Contract is over for ARA

By Kevin Lyons
Editor-in-Chief

ARA's food service contract has ended with Prairie View A&M University, and in the next few weeks, five new food companies, including ARA, will be here to negotiate for the vacant contract that will be awarded in December.

According to Frank Jackson, auxiliary services, representatives from ARA, along with Morrison Food Services, Service America, Marriott Food Services, Southwest Dining, and Professional Food Management, could be in Prairie View as early as next week to start bidding for the rights to serve food at this campus.

"Whoever is awarded the food service contract, whether it be ARA, or any of the other

see 'ARA,' page 5



INTERAC-Japan representatives sitting with two Prairie View students, (upper left.)

INTERAC-Japan group visits PV

By Claudia Sutton
Staff Writer

Representatives from the International Education Research and Analysis Corporation (INTERAC-Japan) organization recently talked with students at Prairie View A&M University. Sponsored by the PVAMU Department of Communications, the talk was the first activity planned by the new PVAMU INTERAC-Japan student organization.

INTERAC-Japan Director Ginger Bell explained

that the organization was founded in 1972 by a Texaco employee in Tokyo, Japan to promote international understanding among the business community. Initially known as the "Berlitz of Japan," the organization's focus began to expand from just teaching English language skills to include total culturalization as a goal. Bell said that INTERAC has also been working with helping business men and women from other countries, including Italy.

Richters turns makeup into Mark Twain

By Rebecca Turner
Staff Writer

Mark Twain On Tour starring Ken Richters, was held on November 9, 1989, in the Hobart Taylor Recital Hall. Ken Richters presented a delightful program on the works of Mark Twain. Mark Twain On Tour was brought to acclaim in 1981, following a major performance in Washington, D.C.

Ken Richters brought Mark Twain back to life on the stage of Prairie View A&M university.

Who is Ken Richters? Ken Richters has displayed a unique blend of talents rarely seen in a single performer. A familiar face to television audiences around the country, he has been seen in a number of weekly series and made-for-television films. He has been accredited to television and radio commercials such as Coca-Cola, Sony, Sears, Dominos Pizza, McDonalds, and



Richter (l), turns into Twain

Post-Newsweek. These are only a few of Ken Richters' accomplishments in his outstanding career.

Mark Twain On Tour has been the highlight of his career. The literary works of Mark Twain has brought joy, laughter, and wisdom to millions of readers around the world. Even today, more than 75 years after his death, Mark Twain continues to stir controversy at every turn of the page. Mark Twain in his own way reminds us that life must be enjoyed to the fullest.

PAGE TWO

BRIEFLY

NEWS

The **Prairie View A&M forensics team** competed in the Texas Intercollegiate Forensic Association Championships over the weekend of Nov. 3-5. In dramatic duo competition, Melanie Lacy and Patrick Briggs placed second, and Ron Ragston and Donis Leonard placed fifth. Leonard also placed third in dramatic interpretation. The tournament, held at the University of Texas at Austin, is the second largest state championship tournament in the nation. The forensic team's next tournament will be the first weekend in January, at the University of Texas at Arlington. All students interested in joining the forensics team are invited to attend the regular meetings, held every Tuesday and Thursday at 3:30 pm in room 124 of Hillard Hall.

The **Political Science club** is extending its appreciations to Jewel Prestage for helping coordinate the National Political Science Honor Society, Pi Sigma Alpha. Students enrolled in government, political science, public administration and international relations are eligible to be received into Pi Sigma Alpha chapters. The officers of Pi Sigma Alpha are Rolanda Terrel: president; Samuel Sampson: vice-president; Kevin Glasper: secretary; Annie Johnson: assistant secretary; Anzia Hamilton: reporter. The faculty that represent this organization are Dr. Mack Jones, Dr. Picard, Mr. Hulen Davis, and Mrs. Eustace.

SPORTS

The **Prairie View A&M University football team**, ended the season with a loss to the Alcorn State Braves by a score of 56-7. The Panthers end their season with an overall record of 1-9, (1-7). Prior to the Alcorn game, the Panthers lost to Langston University on Nov. 4 by a score of 19-18. In that game, the Panthers missed three extra points, and Langston missed two. Prairie View's only win of the season came against Mississippi Valley, 21-12, during the homecoming celebrations on Oct. 28.

KPVU'S TOP 10 Title Artist

1. Tender Lover - Babyface
2. Rock Witcha - Bobby Brown
3. Somebody For Me - Heavy D & The Boys
4. Baby Come To Me - Regina Belle
5. Don't Take It Personal - Jermaine Jackson
6. New Jack Swing - Wrecks 'N' Effect
7. You Are My Everything - Surface
8. Personality - Kashif
9. Let's Get It On - By All Means
10. Bust A Move - Young MC

Gen. Manager: Lori Gray
Music Director: Garvin Jobs
Program Director: Larry Coleman

PEOPLE



Dr. A. I. Thomas

Dr. A. I. Thomas, president-emeritus and director of the Houston Facility of Prairie View A&M University, has been asked by **President Bush** to travel to Namibia, South Africa to observe the elections in that country as a presidential delegate. The delegation is headed by **Edmund S. Muskie**, U.N. Security Council Resolution 435 called for free elections in Namibia, where elections are taking place to establish a self-governing democratic country.

Formerly known as German South West Africa, Namibia has been ruled since 1915 by the Republic of South Africa. In 1971, Namibia was placed under the authority of the United Nations.

Dr. Millard Eiland, head of the Prairie View A&M University Communications Department, is serving as Association for Communication Administration Interest Group Chairperson of the Texas Speech Communica-

tion Association (TSCA). Eiland served as a panel member on the "Development and Implementation of TASP" program at the 1989 TSCA convention in San Antonio earlier this month.

"The TSCA is, indeed, fortunate to have Dr. Eiland in its membership," said Leann Ellis, TSCA spokesperson. According to Ellis, the association seeks "to enhance each member's teaching and awareness communication needs at the school, community college, and university level."

Frank Jackson, director of auxiliary services says that cable television may be in the dorm room as early as next fall.

"All of the paper work has been done," stated the 1973 graduate. "Now all we have to do is get the cable company to come in and dig the cables. Hopefully, we can start the digging by the end of this semester."

According to Jackson, the cable will be installed into every dorm room, and one premium channel (SHOWTIME), will be added to the package that will only cost students an extra three dollars per month on their fee receipts.

"I've got cable television and it cost me \$45 a month. I may just have to move in with one of the students," Jackson quipped.

CAMPUS CRIME

Wednesday, November 1: Complainant reported that the sign designating his reserved parking space was tampered with.

Wednesday, November 1: University instructor reported the theft of his wallet.

Wednesday, November 1: Complainant reported that his vehicle was stolen from campus parking lot.

Wednesday, November 1: Complainant states person(s) took a VCR valued at \$200 from his room without consent.

Wednesday, November 1: Complainant reported three males took her books and refused to give them back. Two of the males were identified, the books were also returned.

Wednesday, November 8: Two complainants reported theft of property from their dorm rooms.

Wednesday, November 8: Reportee stated that stolen property was found in a classroom in the W.R. Banks Library.

Thursday, November 14: Reportee states that subject had taken a large amount of pills. Subject was taken to health center.

The Panther PRAIRIE VIEW A&M UNIVERSITY

- Editor-in-Chief.....Kevin Lyons
- Production Manger.....Reginald Holiday
- NewsWeek Editor.....Kimberly Tyrance
- ViewPoints Editor.....Don Gray
- Chief Staff Writer.....Angela Wilson-McGrath
- Photographers.....Cheryl Malone and Todd Moore
- Advertising Manager.....Charisse Galloway
- Business Manager.....Michael Hodgkin
- Ad Layout.....Tracie Woodson
- Circulation Manager.....Bobby Polite
- Advisors.....Linda Crowder and Penny Williams

Support Staff

Rosalyn Antoine, Kimetris Baltrip, Lisa Jones, Kerri Marshall, Jerold Smith, Claudia Sutton, Rebecca Turner, Felicia Woodard.

The **Panther** is a bi-weekly publication supported through advertising and student activity fees. Views expressed in the Panther are not necessarily those of Prairie View A&M University or The Texas A&M Board of Regents.

The **Panther** will accept news submissions from campus organizations and individuals at Hilliard Hall 209 on or before 5pm on Fridays.

The **Panther** reserves the right to editorial discretion concerning publication of submitted items and photographs.

NEWSWEEK

AT&T donates equipment to PVAMU

From University Releases

AT&T Bell laboratories representatives recently presented Prairie View A&M University \$264,000 worth of computer equipment for the Computer Science Program in the College of Applied Sciences and Engineering Technology.

The presentation was made by AT&T College Relations Representative Jack Degan to Interim President Milton R. Bryant and Dean of the College of Applied Sciences and Engineering Technology Dr. Haku Israni. Also representing AT&T was Campus Manager Terry A. Jones and Media and

Marketing Communications Manager Philip W. Bode, III. Rance Barham, AT&T branch manager for the Computer Systems Division, was responsible for installation of the computer equipment.

"Prairie View is deeply indebted to AT&T's generosity over the years," said Interim President Milton R. Bryant. "Their commitment to our university, and to minority higher education nationwide, has provided an invaluable resource for our students and faculty, positioning them for national leadership in engineering and technology fields," he said.

The AT&T Foundation's



AT&T and university officials discuss the \$264,000 worth of computer equipment donated to Prairie View.

\$264,000 gift of computer equipment to the Computer Science Program includes: a 3B2/1000 Model 70 standard configuration computer, twenty-five 605 terminals, four 573 dot matrix printers, a 132 column serial printer, eight 630 MTG color monitors for computer graphics, twelve 6312 WGS standard configurations, 3B2 upgrades of existing computers, and a 3B2 Starlan-10 local area network.

PVAMU was one of 13 universities nationwide to receive computer equipment from AT&T. AT&T representatives Linda Story said Prairie View was chosen for this grant

because of the quality of the university's proposal, involving faculty and students in academic computing; the university's excellent recruiting relationship with AT&T; and the university's strong commitment to using a UNIX computer-assisted instruction (CAI)-based operating system.

The computer equipment is expected to be used to develop a computer-assisted instruction system to teach programming languages, implement a student progress tracking system, teach the UNIX system, and develop software, among other uses. "Donations like this will enable Prairie View to graduate more minority computer science majors than any other college or university in Texas," said Computer Science Program Coordinator J. D. Oliver. "A large percentage of these graduates are recruited by top companies such as AT&T, IBM, Kodak, Lockheed, McDonnell Douglas, Shell, Exxon, E-Systems, and UNISYS," he added that the program provides 30-40 skilled graduates every year, with more expected with the program's projected growth.

Fire safety is Prairie View's top concern

By Tracie Woodson Ad Layout

Colonel Jiles Daniels, Interim Vice-President of Student Affairs, and Dr. Samuel McClendon, Director of Student Life, are working together to make the residence halls here at PVAMU safer for the students.

Their primary concern is the safety and well-being of the students. Together, their main goal is to create a stable living and learning environment for the students at their "home away from home." In their efforts to make the residence halls safer, Daniels and McClendon are tackling the first and most important issue at hand—fire safety here at Prairie View.

Vandalism and the destruction of buildings have caused smoke detectors to be pulled down and fire extinguishers to be discharged. With this equipment inoperable, the students lie unprotected at night. Attempts are being made to rectify the problems but with Fire alarms going off unnecessarily, students don't respond as they should and tend to take a nonchalant attitude.

The state fire marshal began visiting in 1988. But since then not much had been done to correct these hazards. He ruled that equipment was not in compliance with state fire laws and verbal notice was given. Recently students were faced with the scare that the dorms would be closed in thirty days if the problems were not corrected.

On November 7, the chancellor made a visit to the campus. Accompanying him on his tour of dorms were Daniels, McClendon, Dr. Bonner, Adam Barnett, Dr. Eddie Davis, Dr. Bryant and a representative from the state fire marshal's office. The meeting which followed this tour went well and it was cited that improvements were noticeable and efforts in place.

Efforts to improve the problem were also made by Daniels and McClendon through the solicitation of the staff and students to help keep things in place. McClendon says, "We have made the staff aware of their jobs and responsibilities and recommend that they be more visible in peak hours of the morning when most of the misconduct goes on."

SOMETIMES IT TAKES AN ARMY TO PAY BACK YOUR COLLEGE LOAN.



Paying back your college loan can be a long, uphill battle. But the Army's Loan Repayment Program makes it easy.

Each year you serve as a soldier, the Army will reduce your college debt by 1/3 or \$1,500, whichever amount is greater. So after serving just 3 years, your college loan will be completely paid off.

You're eligible for this program with a National Direct Student Loan or a Guaranteed Student Loan or a Federally Insured Student Loan made after October 1, 1976. And the loan can't be in default.

And just because you've left college, don't think you'll stop learning in the Army. Our skill training offers a wealth of valuable high-tech, career-oriented skills. Call your local Army Recruiter to find out more.

Willowbrook Recruiting Station
17776 FM 149, Suite 30
Houston, TX 77064-1003
(713) 955-7903

ARMY. BE ALL YOU CAN BE.

NEWSWEEK

Cult forum uncovers spook myth at PV

By Kimberly Tyrance
NewsWeek Editor

Thursday, Nov. 9.

Information on cults, primarily Satanism, was presented by two panelists. Sgt. Ray Skinner, an expert in cults from the Alvin Police Department and

Chief Rayford Stephens of the Prairie View A&M University Police Department.

Webster's Dictionary defines cult as a system of religious belief and worship.

"Realizing that cults are religions is the hardest concept of all when dealing with cults," said Sgt. Skinner. He further stated that our country was founded on religious

freedom and even though we may not like it, the police can do nothing unless a cult commits a crime.

In the satanic community there are two types of satanist. The traditional satanist, is legal and above ground. They have churches, ministers, weddings and funerals. They operate like most christian churches only they worship Satan instead of God.

The other type, referred to as the problem satanist, is the 'Self-Style Satanist.'

"This group makes up their practices as they go along and the only thing that limits them is their imagination," said Sgt. Skinner.

He further stated that target groups are males and females between the ages of 14-21 who suffer from low self-esteem and alienation.

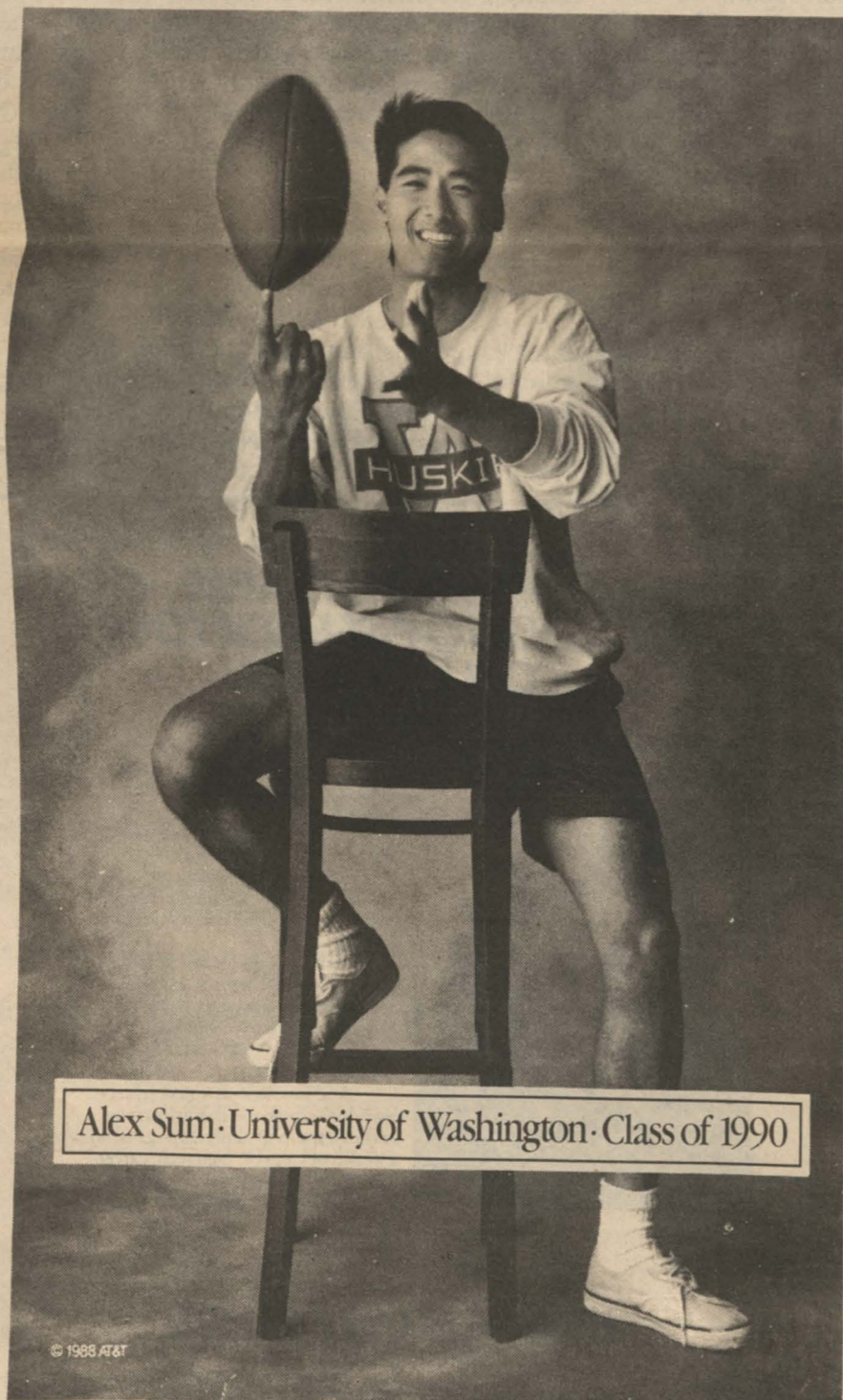
Drugs, alcohol, heavy metal rock music and sex are the major contributors in capturing these satanic followers.

According to Sgt. Skinner, satanic cults do the following:

- *Buglarize and vandalize churches
- *Animal mutilation
- *Animal sacrifice
- *Physical and sexual abuse
- *Self destructive acts
- *Satanic Rituals (drinking of blood)

Cults are definitely on the rise in the 21st century and everyone should be aware of their presence.

"I wasn't rubbing it in-I just wanted Eddie to know the score of last night's game."



Alex Sum · University of Washington · Class of 1990

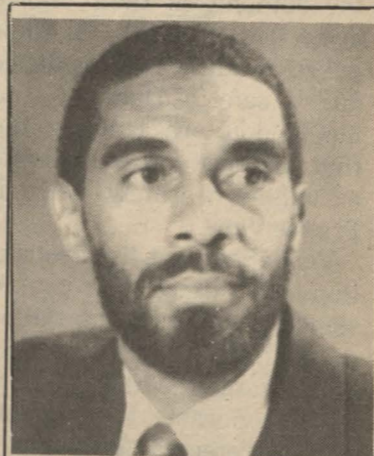
Go ahead and gloat. You can rub it in all the way to Chicago with AT&T Long Distance Service. Besides, your best friend Eddie was the one who said your team could never win three straight.

So give him a call. It costs a lot less than you think to let him know who's headed for the Playoffs. Reach out and touch someone.®

If you'd like to know more about AT&T products and services, like International Calling and the AT&T Card, call us at 1 800 222-0300.



AT&T
The right choice.



On Saturday, November 18, 1989, Mayor Ron Leverett, along with other black mayors throughout the United States, will hold an annual conference at Prairie View A&M University.

NEWSWEEK

Improvements for student life at PV

By Kerri Marshall
Staff Writer

The Student Affairs at Prairie View A&M University has taken on a new leader,

Vice President John Daniels.

There are 3,126 students in the residence halls. When asked about the upcoming changes Dr. Samuel H. McClendon says, "The school is

in the process of accomplishing some of the maintenance problems that the residence halls are having."

The department of student life is now making plans to

decide which resident halls will be closed for the summer of 1990. Drew Hall was closed last summer for renovations.

Student life is involved in a number of activities both state

and local. On the state level there is an organization called N.A.S.P.A (National Association Student Personnel Administrators). Dr. McClendon will be attending this years meeting in New Orleans.

Dr. McClendon attended T.A.C.U.S.P.A (Texas Association Of College University Student Personnel Administrators) in San Antonio.

The Department has planned for staff members to attend B.O.C.C.U.S (Boost Alcohol Consciousness Concerning The Health of University Students). The staff members are Birtha Arnold, head residence director of Banks Hall; Jerome Thornton director of Buchanan Hall, and Linda Torrence, Female Area Coordinator.

Upcoming additions are "Spotlight on The Department of Student Life" and "Radio Talk Show."

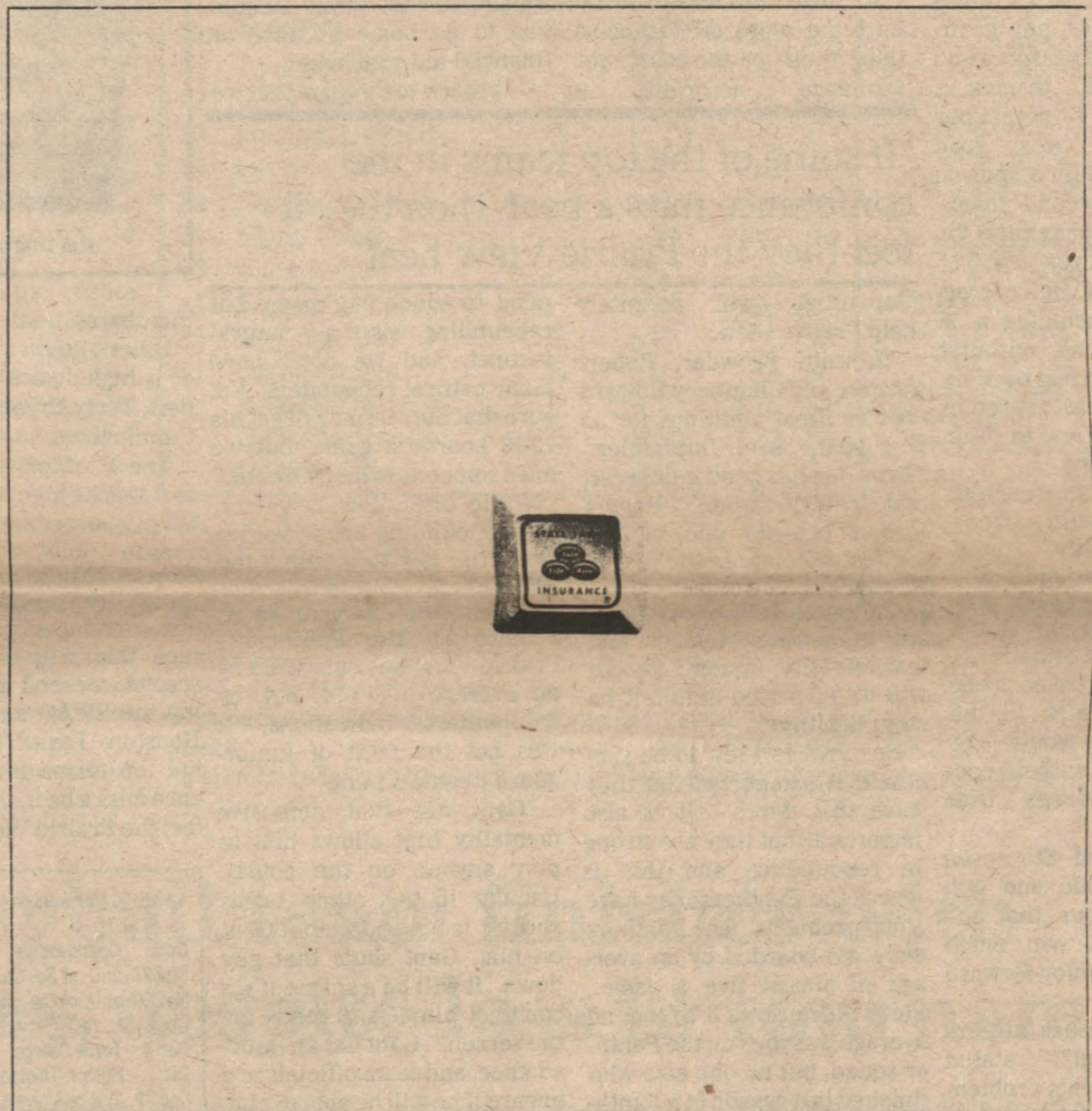
The purpose of "Spotlight" is to increase the University Communities awareness of activities sponsored by the department. The purpose of the "Radio Talk Show" is to disseminate relevant information and concerns on personal growth/development to the University Community.

Contract up for ARA

Continued from page 1

companies, will have to meet some strict specifications," said Jackson. "Some of the guidelines that the contractor will meet are having a 5-week meal plan that the students select. The contractor will also have to set up a program that will allow the students to eat anywhere on campus, so in effect, the quality of the food will have to be of high standards at all dining areas."

Jackson also stated that after the new contract is awarded in December, the food service contractor will be serving food by Jan. 15.



Press here for a great data processing career.

The right time. The right place. State Farm is hiring.

If you're a senior with a data processing, computer science or math background, there may be a very special career opportunity waiting for you in one of the largest corporate data processing facilities in the country.

There are actuarial and auditing jobs open, too.

Blue Chip. Green light. State Farm is one of America's leading insurance companies. Through innovative marketing and a proud service tradition it has become the nation's leading auto and homeowner's insurer, and one of the top life insurance companies in the country.

You'll receive expert training. You'll work on state-of-the-art

data processing equipment. You'll go as far and as fast as you can.

You couldn't have a more solid base to build a career on.

Contact your Placement Director. Our recruiter will be on campus 12-01-89

Or write Ron Prewitt, Assistant Director, Home Office Personnel Relations, One State Farm Plaza, Bloomington, Illinois 61701.

STATE FARM INSURANCE COMPANIES. Home Offices: Bloomington, Illinois. An Equal Opportunity Employer.

SPORTSWEEK

Duplantier is high on teams talent level

By Kevin Lyons Editor-in-Chief

decided in the last two minutes of play. All of these accomplishments did not happen by accident. The Panthers had one of their better talent stockpiles in recent years. Center Steve Stevenson averaged 9.7 points and 8.7 rebounds per game, and finished the season as an All-SWAC first teamer. Michael Ervin's 13 points per game average was good enough to land him a spot on the all-SWAC second team. However, the floor general for the Panthers last year was 5'8" guard Lamar Holt. Holt averaged 11 points, (including a 35 point, 10 rebound outburst against TSU), and just over six assists per game last season in helping Prairie View to their best record in years.

“Lamar Holt is an excellent basketball player with a strong leadership mentality,” stated Duplantier. “Lamar and I talk a lot on and off the court, and he usually calls the play that I would call in game situations. And of course Stevenson is one of the best big men in the conference. We would be dead in the water without consistent performances from Lamar and Steve.”

While Holt and Stevenson provide the inside and outside, it is obvious that the Panthers cannot win much without junior-forward Michael Ervin. “Michael Ervin has All-American potential,” stated Duplantier. “Ervin’s problem is that he needs to be more consistent. If he could play at a consistent level night in and night out, it would raise our level of play another notch because no one in the conference can stop Mike if he is on his game.”

However, past statistics will not win future games, but this stat might: the Panthers are the only team in the SWAC who did not lose a single starter to graduation. Head coach Jim Duplantier thinks that this team chemistry will be key in the Panthers hunt for a SWAC championship.

“Last year, the team chemistry was excellent,” stated

Duplantier. “There were no cliques, and everyone played together as a unit. However, we’ve added some new faces, so it will be interesting to see how that affects our team unity this year.”

If those new faces do not hurt the team off the court, then their on-the-court performance, according to

er uniform averaged more than five rebounds per game. “Rebounding was our ‘achilles tendon’ last year,” Duplantier said. “We thought that we may have alleviated that problem this year, but Benoit (recruit Bruce Benoit) had to go home because of financial aid problems.” “I preach to the guys that we

“If some of the top teams in the conference miss a beat, then they’ll feel they the Prairie View heat”

Duplantier, will definitely help Prairie View.

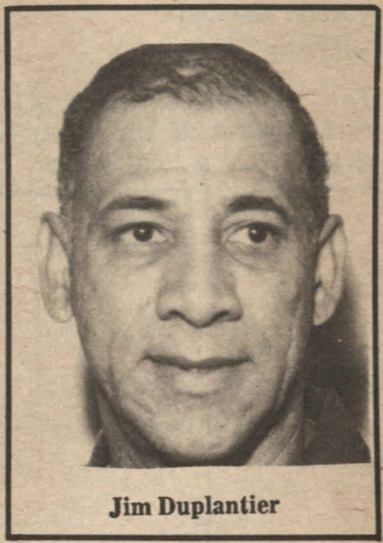
“Lincoln Browder, Robert Jordan, and Chauncey Howard will be great additions for us this year,” said Duplantier. “Browder has good quickness, and is very strong. Robert Jordan can be one of the greatest shooters in the SWAC if he sheds some of his recreational habits. Chauncey Howard is getting stronger and learning the system, people will be surprised at him if he stays healthy.”

For Prairie View to be successful it is important that they have this depth. It is also important that they are strong in rebounding, and this is where the Panthers may have a few problems. The Panthers were out-boarded by an average of almost five a game. Steve Stevenson’s 8.7 rebound average was tops on the Panther squad, but no one else who finished last season in a Panth-

need to block out more, but rebounding is a natural instinct, and we don’t have many natural rebounders. I’m sure that Stevenson will get his 10-12 boards a game, but we need someone to help him out.”

While offense wins games, and rebounding keeps you in them, the key to winning the SWAC championship this year will be some “in your face” defense by the Panthers. Prairie View was outscored by an average of 80-74, but, by Duplantier’s indications, it was not the fault of junior-guard Leonard Gant.

“Gant has that defensive mentality that allows him to play anyone on the court. Usually if the other teams shooter is hot and we put Gant on him, Gant shuts that guy down. It will be a shame if we can’t get him (Gant) ready for the season.” Gant has an injured knee, and team officials are unsure if he will be able to play



Jim Duplantier

this season.

Other players that Duplantier is high on are Lorenzo Tolbert, Terry Bryant, and Dwain Cunningham.

The Panthers are expected to finish as high as third in the SWAC, according to some pre-season polls, right behind Texas Southern and Southern University. Duplantier, on his teams chances in the SWAC race that will conclude the second weekend in March during the SWAC tournament in Houston, Texas: “If some of the top teams in the conference miss a beat, then they will feel the Prairie View heat.”

1989-90 Men's Basketball Schedule

Table with 3 columns: Date, Opponent, Time. Lists game schedules for the 1989-90 season.

Men's 1989 Basketball Roster

Table with 5 columns: No., NAME, P, HT, WT, CL. Lists roster members and their stats.

A roll of toilet paper! That is what cost the Panthers a win against the Texas Southern Tigers in the final regular season basketball game of last year. Although the Panthers lost 77-55 to the same Tiger team one week later in the SWAC tournament, head coach Jim Duplantier had a lot to be proud of. His Panthers had come a long way. They defeated four of the other seven teams in the conference. They finished a respectable 5-9 in SWAC play, however, five of those losses were by an average of six points and were

MARKET DISCOVER CREDIT CARDS. EARN UP TO \$10 PER HOUR ON CAMPUS. FLEXIBLE HOURS AVAILABLE, ONLY TEN POSITIONS OPEN CALL: 1-800-950-8472 (EXT. 3)

If you're having problems with your grades, social life, or have recently lost your job due to alcohol and/or drugs we can help. Call Johnny Wright at 1-800-621-8580, or 1-817-445-HELP Dublin Recovery Center

Campus representatives needed for "Spring Break 90's" programs to Mexico, Bahamas, Florida, & S.Padre Island. Free Vacation in addition to \$\$\$\$\$\$. 1-800-448-2421

SPORTSWEEK

Atkins dealing with Pantherettes team

By Kevin Lyons Editor-in-Chief

action anywhere from one to four months. Ferrell was the team's leading scorer averaging almost 14.5 points per game. She also averaged 7.1 rebounds per game which ran-

reason that the Panthers ranked fourth in the SWAC in rebounding last season. However, the main force under the boards during the 1988-89 campaign was senior-cent-

tive as they were without Maravalyn Snell. Snell led the team in free-throw percentage, three-pointers, steals, and assists. Snell's leadership on the court helped Prairie View play well despite the teams 9-18 record.

“Lyn is a very aggressive player,” stated Atkins. “She is a superb floor leader and keeps everyone under control.”

Another player that Atkins feels needs to contribute for the Panthers is sophomore-forward Sharese Bell.

“We will need Bell to be consistent in her three-point shooting. With her outside shooting we can consistently stretch the opposing teams’ defense out.”

Unfortunately for the Pantherettes last season, it was their defense that was stretched out. They were seventh in the SWAC in scoring defense last season, surrendering an average of 73.7 points per game. Coach Atkins thinks that the problems that caused the Panthers to be outscored by a margin of almost ten per game were two-fold.

“Size and depth were our

Women's 1989 Basketball Roster. Table with 5 columns: No., NAME, P, HT, WT, CL. Lists roster members and their stats.

ked her among the top 20 rebounders in the SWAC.

“Having Ferrell in the starting lineup would raise our level of play tremendously,” replied Atkins. “If she is not ready, then her scoring and rebounding would really be missed.”

Ferrell's rebounding is one

of Cydney Pennie. Pennie was seventh in the SWAC in rebounding while averaging 8.7 boards per game, and at one time led the Pantherettes in rebounding eight consecutive times. However, as well as Pennie and Ferrell played last season, the Pantherettes wouldn't have been as competi-

main problems last year,” stated Atkins. “We could not rebound effectively, and we couldn’t score inside on a consistent basis. Also, our depth right now is not as strong as I want it to be, but we are working on it.”

Other players that are high on Atkins’ list are Frederice Burnice, and freshman recruit DaNisha Kemp.

1989-90 Women's Basketball Schedule. Table with 3 columns: Date, Opponent, Time. Lists game schedules for the 1989-90 season.

Volleyball team finishes with succes, despite loss in tournament

By Angela Wilson-McGrath Chief Staff Writer

The PVAMU Women's Volleyball Team wrapped-up their season at the SWAC Tournament in Montgomery, Alabama on Saturday, November 11, 1989. Although the Lady Panthers were eliminated after winning one and losing the next two, two team members were given conference recognition. Alicia Brown and Collette Thompson were All-SWAC, Brown made the first team and Thompson the second.

Despite finishing fifth in the tournament, the team ranked second in the Western division

of SWAC. “The ladies were hitting their stride towards the end of the season,” said Raymond Wilson, head coach, “and I feel that they would have reached that groove in the middle of the season, if we had started on time.”

The head coach attributes the small number of participants to the struggle-ridden beginning that the team had this season. “And, we only had one sub to use,” he added, “meaning that many of the players had to play entire games fairly often. That was really tough, especially

against opponents like Grambling.”

When Coach Wilson pulled a stack of envelopes out of a drawer, he grinned and said, “I think that there will be more players next year, these are all letters from high school students who are interested in playing. I also feel that the program will be moving along nicely by next season and that will serve as a recruiting factor. However, we are losing two seniors, Colette Thompson and Bea Washington, and Monica Cole will be leaving for clinical. But, Jo Wanna Anderson will,

hopefully, be off of the injured list and will be an asset. My coaches, Rhonda Rogers and Mary Miller, and I are looking forward to next season, and we are preparing for it.” Coach Wilson says that they will be attending some clinics over the summer.

To wrap-up the season correctly Coach Wilson felt some Thank You's were in order, “Without my assistant coaches... Thanks for all your work and dedication; Elina Lloyd was our manager and did a lot of work for us; and Thank You to Greg Upshaw who was our driver, our ball-boy, our laundry man, our... right hand, and for free!”

CLASSIFIED ADS. Includes ads for jackets, a well-maintained property, and government jobs.

LIFESTYLES

Hartfield draws upon a field of dreams

By Charisse Galloway
Advertising Manager

Mark A. Hartfield, a Sr. Art Major, can be described as an artist without reservation.

Hartfield was born in 1967 in West Germany and he started his education in Dallas at Bishop Heights Elementary.

In taking an art class at the school, Mark gained a sincere admiration for color and shape.

Although his talents and abilities were not limited, Mark started out doodling and drawing stick figures.

He drew pictures for his mother to hang in her office and the exposure earned him compliments that stimulated his creative abilities.

His love for art superceded his interests in sports and various activities that others were interested in.

In 1981, Mark attended Wilmer Hutchins High School and studied under Mr. Turner.

Mark began to seriously consider art as his lifetime career, when he designed a bulletin

board for his teacher.

She recognized his talent and gave him insight into what his future should be.

In 10th and 11th grade, Mark studied under L.D. Moore, another art teacher at Wilmer Hutchins H.S.

This professor was instrumental in guiding Mark to the point where he could explore himself as an artist.

Mark, attracted by "... bright colors, explosive curvilinear lines, rectangular, horizontal and vertical lines," came to the conclusion (after researching what he liked to do) that his aspirations were in the abstract and non-objective arena.

He began experimenting with media such as pastels, markers, and pens.

Without direction and a great deal of uncertainty, Mark attended Prairie View A&M University in 1985, where he met his mentor and art instructor Rev. Clarence Talley.

Mark, being quite impressed with the productiveness of Talley, began to seek the source of

his instructor's uniqueness.

The strong authoritative approach and constructive criticism of Talley shook Mark up and gave him a direction as to where he belonged in the art world.

Mark began to see his purpose for being at Prairie View, when he met Mr. Talley, the mentor (not the instructor or the artist), who introduced him to the Lord.

"From then on, I began to see the picture, my eyes began to open up and I realized it (art) was a gift from God. I realized I had a purpose in art - to produce whatever I wanted to," stated Mark.

Talley influenced Mark to develop in the field of art. Giving Mark a direction in which he would aspire to travel in the path of an established artist, such as Mr. Talley.

Mark's respect for Robert Motherwell, an abstract expressionist of the early

1940's, began to grow as he learned how to take aesthetic objects and reactions in nature

and develop them into visual art forms.

He learned to take his perception an object, to expand it mentally and then to manipulate it into a tangible art piece.

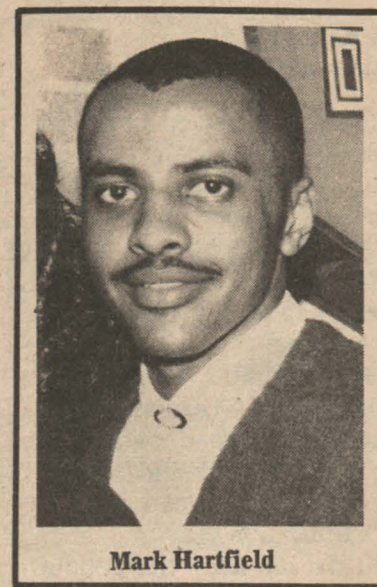
The influence of Talley's bold use of color and scriptures tangibly interpreted into a strong art piece and Motherwell's technique and style have helped Mark to find himself as an artist.

Mark's favorite theme or subject that he continually repeats in his paintings, sculptures, and drawings, is the dove (a symbol of freedom and the Holy Spirit).

Mark's work can be broken up into three groups: individual exhibitions, two-man exhibitions, and group exhibitions.

Mark's location of exhibitions have been in Dallas, Houston, Prairie View, and Waller.

In 1985 Mark received the Most Talented Art Student Award, 1st Place in acrylic painting and in 1989 the PV Choice Award for Best Artist



Mark Hartfield

on campus.

Next semester, in his senior show, Mark will create a visual interpretation of The Songs of Solomon, which will entail the love between a man and a woman.

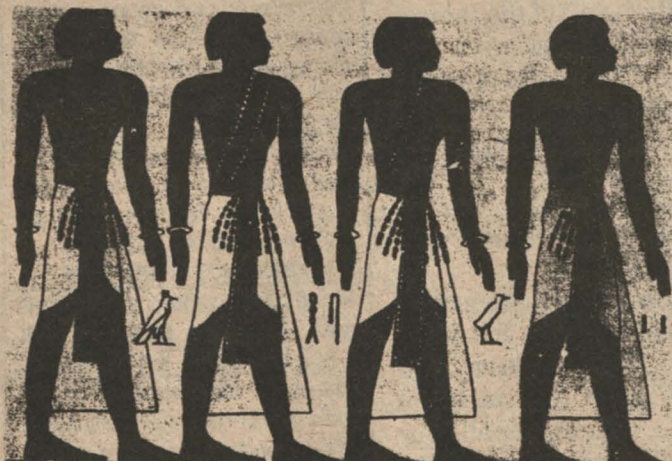
Although art has engulfed Mark's life, he also expresses interest in painting, drawing, jogging, playing basketball, and listening to music.

Is the John B. Coleman library for show or go?

By Kerri Marshall
Staff Writer

One Saturday afternoon a freshman at Prairie View A&M

Before there was any history There was BLACK history



**T-shirts with a message
FW Associates
713-721-6778**

University came across an individual who was having trouble locating information. The individual requested assistance from the front desk to have someone paged. The unfortunate reply was, "It is not my responsibility and she should have stayed with the person that she came in with. There is nothing that I can do about it."

Although, the woman had trouble getting around, she managed to find her friend. Many students and faculty members feel there is an attitude problem. One student said, "No one is about to help anyone" One faculty member said she went to the library to do some research for her presentation she states "I spent two hours using the computer writing all of my citations and then I spent another two hours looking up sources and found not a one of them. I went to the front desk and asked them if there was a special section that I didn't know about?" I showed them my sources and

they said, "You can probably find them at Texas A&M." Another student said after finding out that Prairie View didn't have the sources they were told to fill out a source sheet for every source. Along with this frustrating manner, "The person behind the desk had a very bad attitude." Another statement made was, "The sources are inadequate." The question has been asked by many, "What is the problem?; How can I receive the proper help I need?"

The head librarian Mrs. Adele S. Dendey, is very concerned with the way students and faculty members feel about the conditions of the library. The allotted budget for the library is inadequate, therefore they must concentrate on periodicals rather than the book section. However, the library doesn't have the type of collections that it

would like to have.

Reductions in the library budget are the same throughout the campus. The library has certain types of systems to which it functions. Although, the student cannot wait to the last minute to do their research. Mrs. Dendey says, "The faculty has been very good in letting us know what there needs are." She also adds that, "We need more money so we may have a better collection. If there is any information that Texas A&M has the library can order it and use it for a certain amount of time. And the same procedure goes for Texas A&M.

Some progress has been made. Knowing that resources are limited one would want to start their research earlier. The library entertains various suggestions from students and faculty.

LIFESTYLES

Cerebral palsy victim battles the odds

By Terri Wilson
Special to The Panther

She struggles slowly from class to class, with great eagerness and determination. Her

name is Mary Kelner and she has Cerebral Palsy. Cerebral Palsy is a disorder of motor functions due to brain dysfunction that is present at, or near, the time of birth. Mary has not,

and will not, let her disability win over her desire to live the life that she plans.

Despite a lifetime of struggles, Mary has attained one of her main goals attending col-

lege. One thing that is not often noticed about Mary is that she is specially gifted. In spite of her speech impediment, her mind is full of unique thoughts and ideas that she transforms into words. As the hardest working freshman, as Mary calls herself, her ambition in life is to become one of the best creative writers of all time.

With her strong faith in God, her writing has a personal touch for his love and life itself. Mary's writings are usually in the form of prose and poetry. In her written word anyone can see the warm and compassionate person that she is with out even noticing her disability.

Today's student owns car, reads few books

Today's college students are likely to own a car, watch television more than six hours a week, and read fewer than five books a year outside of class, according to a new survey conducted by MarketSource Corporation, a company that helps market products to college students.

MarketSource conducted four surveys of more than 8,000 undergraduates for a study it completed for advertisers in academic 1988-89.

The survey found that 91 per cent of students watched broadcast television and 55 per cent watched cable television. The students watch broadcast TV for a mean of 6.2 hours per week and cable TV for about 3 hours a week.

Some college administrators said they weren't surprised by that, while others said they thought students probably watched even more television than they reported.

"It's pretty common to hear students talking about what they see on TV," said Caryl Smith, dean of student life at the University of Kansas. "I would like to think that they're watching the news rather than the soaps, although I know many of them follow the soaps."

Mary Rouse, dean of students at the University of Wisconsin at Madison, said, "Television is a relaxer - a way for them to get away from the pressure of academics." The survey also found that

about 40 percent of the students read between one and three books for pleasure during the last year, with the average number reading just under five books per year outside of class.

College administrators said it was understandable that students didn't read more on their own because of the amount of required reading they do for their classes.

The survey also found that 53 percent of students use videocassette recorders, 22 per cent own a compact disc player, and 96.5 per cent listen to the radio. "Indeed, students of the electronic age are bringing gadgets to the campus," said Leon G. Shell, dean of student life at Arizona State University.

College officials also said they weren't surprised to hear that 69 per cent of the students surveyed owned a car, and that 85 per cent had access to a microwave oven.

Widespread car ownership has made the traditional parking problem on many campuses even worse, college officials said.

"As more institutions attract older, not-traditional students, they are more likely to own cars and commute to campus," Mr. Shell said.

This story was reprinted with permission from The Journal of Higher Education.

Make Your First Career Move A Walk Across Campus.

The National Security Agency will be on campus November 28th interviewing seniors majoring in computer and electrical engineering, computer science, and mathematics.



National Security Agency
The Opportunities of a Lifetime.
An equal opportunity employer. U.S. citizenship required for applicant and immediate family members.

VIEWPOINTS

Becton, Bryant winners; Alumni Hall...



My View

by Kevin Lyons
Editor-in-Chief

Prairie View A&M University has finally selected a new president in General Julius W. Becton Jr. Becton becomes the sixth president to take office in the fine tradition of Prairie View presidents. Becton will replace interim president Milton Bryant, who unseated former president Percy Pierre. Becton no doubt will have a big job in front of him as he leads Prairie View into the 90's. The current situations with housing, registration, and

the Owens-Franklin Health Center have all but cut Becton's work out for him. The way he handles these tasks in the next three years will show Prairie View exactly what kind of president it has. However, it will be important that Becton be a "people's president." I feel that interim president Bryant did a great job at being a people's president. He scheduled joint meetings with various student leaders throughout the university. He walked around campus, answering peoples questions. You could even see him jogging around campus while the rest of the campus was hitting the snooze button on their alarm clocks. Yes, he was a hard person to catch up with, (What president isn't?) however, the key word is *person*. He was a personable interim pre-

sident who should not be ashamed of how he handled his short tenure in office. Now, one of the first things that Becton will probably do when he gets here is to do some research on the present state of our university so that he can see what needs to be done. He'll do research, get people to conduct surveys, and then on his lunch break, he'll probably go to Alumni Hall. Becton doesn't take office until December 18, which is about a month from now. However, at the present time, Alumni Hall has a few problems. ARA is given less than \$4.50 per day, per student to feed about 2800 students on the meal plan. With \$4.50, you can't even get a full meal at Wyatt's Cafeteria. You can buy in bulk quantities, so having enough food is not ARA's problem. Their pro-

blem is with some individuals. It's like when you have two Pizza Hut's in the same neighborhood, and everyone seems to always crowd at one instead of the other. It's probably because one Pizza Hut cooks their food better than the other. That is the same situation that Becton will find when he takes office next month. There are some individuals (you know who you are) who just really do not care about the students at all. The food is undercooked in some lines and okay in others. Sometimes the food is cold, and if you take it back, you get a mean look from some of the ARA workers. Some of the workers do not even know what they are serving! So, in a sense, there are just a few individuals who are making ARA look very bad. ARA's contract is up right

now, and when Prairie View brings in another food service contractor, (if not ARA again) those problems may not disappear. Currently, Dr. Bonner, vice-president of administration, and Frank Jackson, auxiliary services are working on better conditions for the dining hall. It is unlikely that the food will get better if some of the same workers who have nonchalant attitudes are rehired. Don't get me wrong, most of the employees at Alumni Hall have pleasant attitudes, and put up with a lot of unnecessary flak from the students. However, there are just a few workers who just don't care. Heres to you General Becton, Prairie View needs your leadership to guide us into the last decade of the 20th century.

Fashion statements are a way of life here

By George Smith
Special to The Panther

What is fashion? What is fad? What is fashion on the campus of Prairie View A&M University? These are questions that are often asked by the students of this university. Fashion is an expression of a person's true identity. It is a form of communication.

Fashion tells observers what kind of mood you are in, it details one's own self-security. For example, some guys will not wear a certain color or pattern of a shirt because it is not in the 'norm.' Even the young ladies on campus will not wear certain kinds of dresses or slacks because they are something new and different, and they are afraid to become

trendsetters. Before a person becomes a true connoisseur of fashion he or she has to build up a security about himself. That security can sometimes be confused for conceit. In reality the two are far apart; this sense of security gives you the courage to express the real person. With this advantage you will become the trendsetters of

tomorrow. In doing this you will find that a lot of students will find themselves being inspired to let their true identities be released. Fads are quick trends that hit the market, are consumed in large quantities and are replaced with something new within a short time. Fads are not terrible if you keep them in the right perspective. If a per-

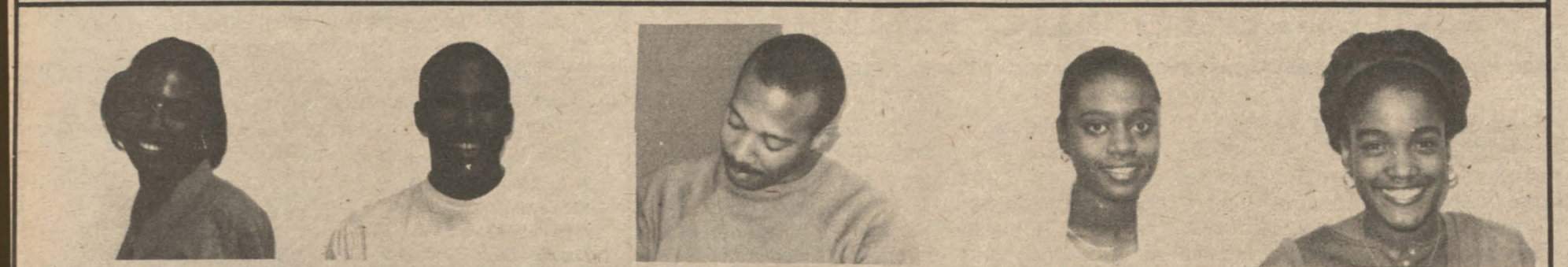
son creates a wardrobe completely from fads he or she has not accomplished anything. They are constantly buying new pieces and are not building a concise wardrobe. Everything in the wardrobe is constantly going out of style. A person can mix a few fadish pieces in their wardrobe for variety.

see 'You,' page 12

Student SpeakOut:

What do you feel about Texas A&M University?

Pictures and Interviews done by Cheryl Malone



Claudia Sutton: I feel that, Texas A&M being our sister school, we should be more socially and academically connected with them. By that, I mean programs of study offered there should also be offered here.

Dwayne Bennet: For our personal growth not only as Black students and growth of the University, but as human beings, it is very important that we socially and academically work with our sister school in preparation for the 'real world'.

Jimmy O. Alerron: I really think it is important that the students and faculty maintain part of our heritage. Our name Prairie View A&M should remain. We should still receive subsidies because of our affiliation with Texas A&M.

Toniya L. Hart-Burton: Since Prairie View A&M is a part of the Texas A&M System, the campus should benefit and interact with some of the programs and facilities it offers.

Christina E. Thomas: I don't necessarily see anything wrong with combining the resources of both Prairie View and Texas A&M because it can help get things done faster. However, Prairie View should try to keep its own identity in the process.

LIFESTYLES

Survey says Alumni Hall has poor food

By Jerold Smith
Staff Writer

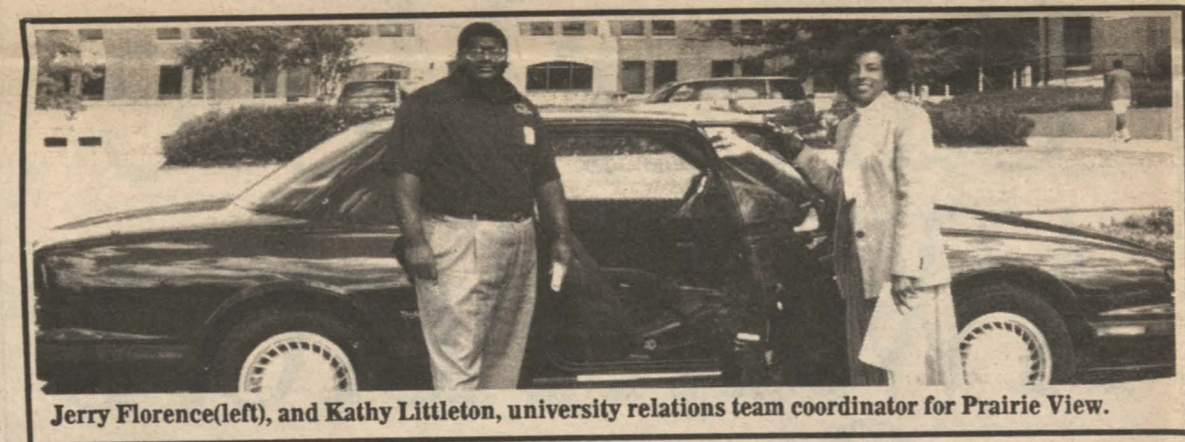
Prairie View's Auxilliary Service recently conducted a survey to find out what the students felt about the services of ARA. Surveying two hundred students at random, with the scale ranging from excellent to poor, the survey showed that the overall excellent percentages totaled thirty-five, while the poor percentages totaled an amazing three hundred thirty-five. The survey asked if popular foods were available. 1% said excellent, 9% said good, 40% said fair, while 48% said poor. When asked about the taste of the food the students replied with 6% in the excellent category, 57% replied good, 53% repli-

ed fair, and 41% replied poor. The main problem with the taste was the food being too greasy. When mentioning the appeal of the food the students replied with 0% in excellent category, 15% good, 51% fair, 28% poor, and 3% simply didn't know. A stunning 40% said that the food was served poorly, 1% said excellent, 24% said good, 34% said fair, and 1% just didn't know. The students suggested that ARA should serve hotter food. Students also suggested in the survey that ARA should reinitiate the seconds program, which allowed the students to go back for seconds. The students asked if ARA could increase portions of food served. Many asked if ARA could start an all-you-can-

eat program, because the students were leaving the dining hall hungry. "Cleanliness is next to Godliness." Yet the students felt that the silverware was too dirty, that they should clean spills and collect dirty trays from the tables sooner, and all employees should wear gloves and hairnets at all times. In general, the students feel that the dining hall should be a lot cleaner. The overall rating of the dining service concluded with 3% excellent, 24% good, 44% fair, and 26% feel that the service is bad. Breakfast is the best meal on campus according to the students who answered 15% in the excellent column, 40% in good, 19% in fair, 18% in poor, and 7% just did

not know. When rating lunch 1% said it is excellent, 15% said good, 51% said fair, and 25% said that the lunch was poor. The rating of dinner was also 1% in the excellent section, but 15% in good, 40% in fair, and 41% feel that dinner is poor. The popular foods for the students are baked potatoes, steak, tacos, hot dogs, shrimp, hamburgers (no turkey added), pizza (not on hamburger buns), spaghetti, french fries, and chicken fried steak made the top ten. The students feel they deserve a better selection of food, since they are paying eight hundred thirty-nine dollar per semester for their meal plan. The students also complained about the burning of the food due to the workers' lack of concern and disinterest

in proper food preparation. Students feel that the line organization is bad. The workers' attitudes are just as bad. ID card validation should be made easier. Faster food service was suggested as well as nutritionally balanced diets and options on the meal plans. Ninety-six percent of the students surveyed answered that the meal plan was the biggest problem of all. In the survey 57% of those polled were male and 43% were female. The results of the survey are at a 2.5% accuracy. Those students interested in improving the food service in Alumni are invited to attend the Food Service Committee meeting held every Wednesday at 4:00 pm in the ARA conference room in Alumni.



Jerry Florence(left), and Kathy Littleton, university relations team coordinator for Prairie View.

GM rides into PVAMU

From University Releases

A team of five General Motors (GM) Corporation officials, joined by a team coordinator and key executive, recently visited the Prairie View A&M University campus to talk with students and faculty, to recruit, and also display some of their 1990 line of automobiles. Jerry Florence, divisional director for marketing strategy in the AC Rochester Division, is the key executive assigned to PVAMU. He explained that GM selected Prairie View in 1986 as one of 57 "key institutions," each assigned its own university relations team and key executive. Kathy Littleton

is the university relations team coordinator for PVAMU. Florence, who last September addressed an Engineering Professional Concepts class at PVAMU, said only eight of the 57 "key institutions" are traditionally black universities and that all 57 are a very select list. "We are most impressed that Prairie View has graduated more black engineers in the United States for several years in a row and now ranks number two in the country." GM has hired over 60 Prairie View graduates with backgrounds in engineering, science, business, and liberal arts. Last summer, 43 students were involved in either co-

op or internship programs with various GM divisions. Florence said that since 1971 GM has spent over \$1/2 million for enhancement of Prairie View academic program and opportunities for faculty and students, and recently donated a \$100,000 grant for developing a Computer-Assisted Design curriculum in the College of Engineering and Architecture. "We see this as a true investment," said Florence. "We are interested in value created—not just business, but an improved standard of living," said Florence.

International student week shows PV culture

By Claudia Sutton
Staff Writer

November 12-18 was International Student Week at Prairie View. The international students held a series of events that centered around the culture of their native countries. The officers of the African Association and the International Association combined their activity efforts for the first time this year to make International Students week an annual event. According to

Dr. Milton Nagbo Nicks, the week exhibited the diverse cultural and ethnic characteristics of students at Prairie View. Highlights from the week include: Sunday, A Thanksgiving Day Program; Monday, Display of Art in the Library, plus documentaries of different countries; Tuesday, open; Wednesday, Food Festival in Alumni Hall; Thursday, Palestinian Festival; Friday, Carribbean Dance, Cultural Revue; Saturday, Soccer Game, Pees & Vees featuring Reggae Band.

1989 PVAMU FINAL FOOTBALL RESULTS RECORD 1-9, 1-6

TSU 45, PRAIRIE VIEW 7

SOUTHWEST TEXAS STATE 41, PV 0

JACKSON STATE 66, PV 0

SOUTHERN 34, PV 3

GRAMBLING STATE 49, PV 0

ARK/PINE BLUFF 35, PV 32

ALABAMA STATE 47, PV 0

PRAIRIE VIEW 21, MISS. VALLEY 12

LANGSTON 19, PV 18

ALCORN STATE 56, PV 7

VIEWPOINTS

The 'majic man,' drugs, and The Hill

By Don Gray
ViewPoints Editor

Skeezer and the Majic Man were hard up for cash. They stayed up all night selling cocaine and hash...to an undercover cop who had a sister named Bam. For reasons unexplained Bam loved the Majic Man. Skeezer was a Boy Scout before she went to see the man, and found out the hard way that nobody gives a 'damn'. They knew that they'd find freedom just across the Waller line, so they hopped into a stolen car and took 290 in the

night.

The undercover cop never liked the Majic Man, even back in childhood he wanted to see him in the can. Two-thirty in the morning, Skeezer behind the wheel... they crashed into paradise, you could hear them tires squeal. Bam got married at fourteen to a racketeer named Chill. She made secret calls to the Majic Man from a bayou on 'the hill'.

And the walls came down. They crashed upon 'the hill'. You could see them when they were standing, you could see them when they fell. The

undercover cop pulled up, he said, "Everyone here is a liar, if you don't surrender now it's gonna go down to the wire." Skeezer took his gun away, it messed up his mind. The undercover cop was found in Hempstead by a tree, down across from the pool hall where they kick your butt for free.

The next day the undercover cop was hot in pursuit. He was taking the whole thing personal, he didn't give a hoot about the loot. The Majic Man was on the cemetery bridge using Skeezer as a shield. This time

the undercover cop was hot, the stuff was really real. Bam got up in the middle of the night, pulled the gun from the dresser drawer. Chill asked where she was going, she told him he didn't want to know. Bam told the Majic Man, "I'm not fooled by Skeezer's clue, I knew him even before he ever became a Hempstead 'girl'." The undercover cop was found face down in a field, the bullet packed inside his head, the lead that closed the deal. Bam just looked at the Majic Man, and then she yawned and stretched. She said, "Don't

look so suprised, it was you to me who taught...in Prairie View anything's legal, as long as you don't get caught."

Sometimes I think of Skeezer. Sometimes I think of the Majic Man. I think I'll go down to 'Zippy's and have myself some fun. Ain't no more opportunity here, everything's been done. The trees fall down in Prairie View and the cows get fat. I guess I'll grab a pack of bullets, roll down to the yard and get myself some cat. The Wilbury's said it in 88', nobody thought that it was tough. Now you fools can't get enough.

You are what you wear

Continued from page 11

Fashion on the campus of Prairie View A&M University can be referred to as a melting pot. There are so many varieties that make up the fashion society on this campus. There are three types of people: those who dress, those who want to dress, and those who just do not care.

People who are referred to as fashion plates on the campus should always uphold that image even on days they do not feel their best. If you are a true person of fashion you know that the clothing is only one half of the business. A person's

attitude is a very important component in their outlook. For example, if you have on an expensive outfit and your attitude is one of uncertainty, your outlook will have the same reflection. The price or the name of a garment does not always constitute the grandness of it. Your accessories and attitude are key parts. Often times students have complexes about themselves. They do not know how to merchandise clothing, and they are just afraid of not being accepted by their peers. These obstacles often keep students from wearing fashionable things. They do not want people to notice them too much.

There is one characteristic left for the person who wants to dress, and that is the person who says, "I dress better in the winter" or "I dress better in the summer". These are referred to as occasional fashion plates. In reality, this makes no sense because of the simple fact people make fashion, not seasons.

Last, but not least, are the lethargic dressers. These are people who do not care about fashion. The one tiny detail that they are forgetting is that fashion is a part of everything that you do in life. It is a relevant factor of business and your social environment. You will fit into one or the other.

Letters-to-the-Editor

I was pleased to read the article "Highlights of The First Sixty Years at PVAMU" in the October 20, 1989 issue of The Panther. The article was timely and quite informative. However, I would like to point out an inaccuracy.

In the article, it is stated that in 1885 "PV issued it's first diplomas, which were the equivalent of a state permanent certificate." In fact, PV

issued a diploma, called a licentiate, to my grandfather, Charles Joel Robinson, in 1882.

After receiving his diploma in 1882, Charles J. Robinson became an educator, landowner, farmer, and entrepreneur in Brazos and Caldwell Counties. I am proud of the accomplishments of my grandfather and proud to be teaching at the institution from which he received his

diploma 107 years ago. If you would like to see his original documents I will be happy to show them to you.

Thank you for an otherwise excellent homecoming issue. I have thoroughly enjoyed reading The Panther this academic year. Keep up the good work.

Sarah B. Williams, Dept. Head
Sociology and Social Work

Happy Thanksgiving

AS AN ARMY NURSE, YOU GO RIGHT TO THE FRONT LINE OF HEALTH CARE.

Whether you're in a modern hospital, working on the front line of nuclear medicine, or in a field hospital, when



you're an Army Nurse, you're right in the center of the action.

The Army offers the dedicated nurse:

- a professional environment
- direct, hands-on experience
- opportunities for promotion
- responsibility and respect

As a vital member of the Army's health care team, you will be able to apply your talents to a full range of nursing disciplines. And as an officer in the U.S. Army, you will have an opportunity to develop and practice your leadership and managerial skills.

If you're ready to challenge yourself again, it's time to talk to your local Army Recruiter.

Nurse Recruiting Station
Fannin-Holcome Building
6900 Fannin Street, Suite 660
Houston, Texas 77030-3805 (713) 799-8025

ARMY.
BE ALL YOU CAN BE.®