

Prairie View A&M University

Digital Commons @PVAMU

---

PV Panther Newspapers

Publications

---

12-8-1986

## Panther - December 1986 - Vol. LXV, NO.6

Prairie View A&M University

Follow this and additional works at: <https://digitalcommons.pvamu.edu/pv-panther-newspapers>

---

### Recommended Citation

Prairie View A&M University. (1986). Panther - December 1986 - Vol. LXV, NO.6., *Vol. LXV, NO.6* Retrieved from <https://digitalcommons.pvamu.edu/pv-panther-newspapers/293>

This Book is brought to you for free and open access by the Publications at Digital Commons @PVAMU. It has been accepted for inclusion in PV Panther Newspapers by an authorized administrator of Digital Commons @PVAMU. For more information, please contact [hvkoshy@pvamu.edu](mailto:hvkoshy@pvamu.edu).

**TSU-UH  
MERGER  
P. 4**

**STUDENT  
OPINIONS  
P. 4**

**BUYING  
HABITS  
P. 9**

The

December 8, 1986

Volume 65  
Number 6



# PANTHER

PRAIRIE VIEW  
A & M UNIVERSITY

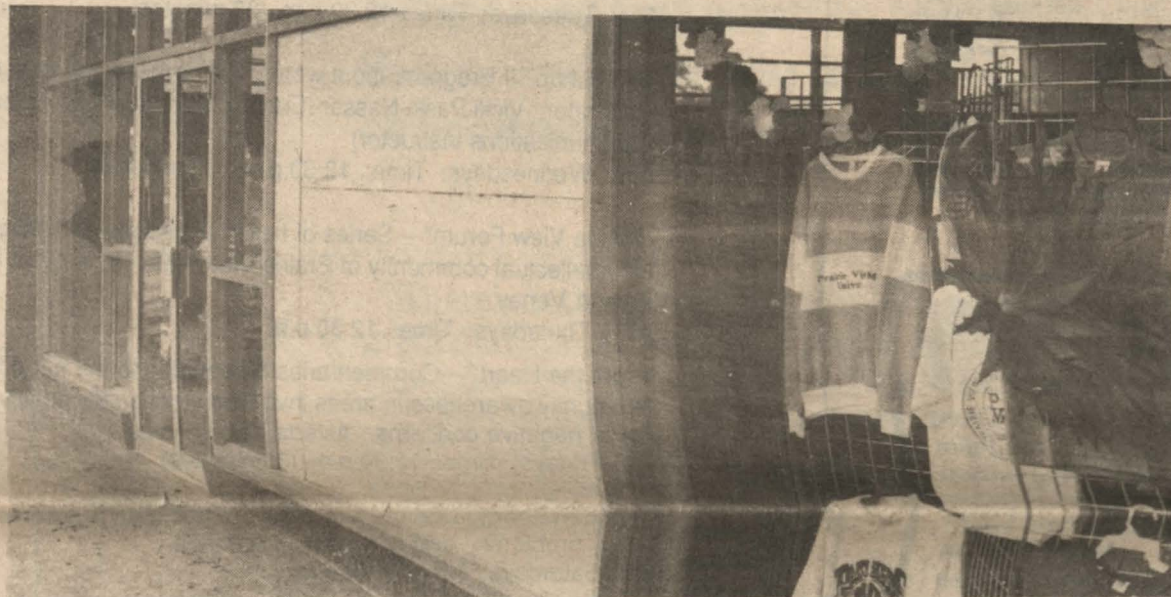
## Blackout Spurs Deviant Behaviors

by Stephanie English

According to officials mechanical malfunction caused the two hour black-out, Sat., Nov. 15, on campus. At approximately 3:15 a.m. all incoming electrical power was interrupted to the university.

W.R. Gooden, Supervisor of Waste Waters, could not pin point the problem. He said the malfunction could have resulted from a number of things, including everyday wear and tear. Gooden went on to say that a monthly maintenance check is conducted to try to curtail incidents like this from happening. Gooden also says, there is no real way to prevent something like this.

At present, there are only three back-up generators on campus. The sites are: (1) Owens-Franklin Health Center, (2) Administration Building, (3) Street Light Systems.



The Campus Book Store was vandalized during the Blackout.

Central Utilities first believed that the main feeders supplying the power to the university were

lost, so the San Bernard Electric Coop. engaged their back-up units which produced no results and also

proved that the incident was an isolated problem. It was later determined that feeder breakers

were tripped at the power plant.

Gerald Kelly, Director of the Physical Plant, says there's still one mystery that remains unsolved. Kelly says his office and Electric Supply company are still trying to determine why there was total power loss. According to Kelly, only about one-fourth of power should have been lost.

One by one all feeder breakers were put back into service. The power was restored to all campus feeders except one.

At this time temporary repairs have been made to restore power to all campus buildings, although permanent repairs will require a new vacuum switch for portions of the blown feeder.

Unfortunately some students used this opportunity to engage in deviant behavior.

According to Chief Stevens between 5 to 10 students were

See Blackout, page 3

## Corporate Seminar

by Jackie Blair

The Prairie View A&M University Counseling and Career Development Center hosted a two day seminar on "How to Survive and Succeed: From College To The Corporate Environment." The seminar was conducted by Ms. Carolyn Shelton, director of "To The Best Of You" a business etiquette and protocol consulting firm. Prairie View A&M University was chosen as one of the nine outstanding black colleges to participate in these workshops. Her visit was sponsored by Xerox Corporation. The "Miss Manners" of corporate America, lectured on such various subjects as: Dressing for success, Power lunching, Getting along with bosses, Table manners, The Extra Edge-Image, Class, and Finesse.

Ms. Shelton said that having been a flight attendant with Continental Airlines for 15 years, her exposure to various cultures enhanced her knowledge of

social graces and customs. Since founding "To The Best Of You" Inc. in 1976, Ms. Shelton has been a guest on the PHIL DONAHUE SHOW, and 60 MINUTES. She has also been featured in many articles which have appeared in JET, EBONY, ESSENCE, BLACK ENTERPRISE, and U.S.A. TODAY.

Ms. Shelton said that "etiquette is not just a concern for Blacks." The knowledge of corporate manners and professional etiquette is necessary, because it is never taught in the classroom. "You have to play by the rules of that company's particular culture. Corporate America is looking for those who can play the game," she stated.

Ms. Shelton defined etiquette as one of the groups of social skills human beings need to get along with each other. It's about

See Seminar, page 10

## The Struggle Is My Life

Two new books by the imprisoned leader of South Africa's anti-apartheid movement, Nelson Mandela, have been recently published in the United States. They are THE STRUGGLE IS MY LIFE and HABLA NELSON MANDELA.

Mandela's books are published by Pathfinder Press in New York, which also published books by Fidel Castro, Malcolm X, and leaders of the Sandinista revolution in Nicaragua.

THE STRUGGLE IS MY LIFE brings together speeches and writings by Mandela spanning more than 40 years of his activity in the African National Congress (ANC), the major organization fighting for the end of apartheid rule in South Africa. Mandela's courtroom testimony in the 1964 trial at which he was sentenced to life imprisonment is also included.

A special supplement contains accounts of Mandela in prison by his fellow prisoners.

Among the most recent material is Mandela's reply to South African President P.W. Botha's 1985 offer to release Mandela if the ANC leader "unconditionally rejected violence as a political weapon." In his reply, read by his daughter Zinzi to a mass meeting in Soweto, near Johannesburg, Mandela said: "Let him (Botha) renounce violence. Let him say that he will dismantle apartheid. Let him unban the people's organization, the African National Congress. Let him free all who have been imprisoned, banished or exiled for their opposition to apartheid. Let him guarantee free political activity so that people may decide who will govern them....

"But I cannot sell my



Nelson Mandela

birthright, nor am I prepared to sell the birthright of the people to be free...

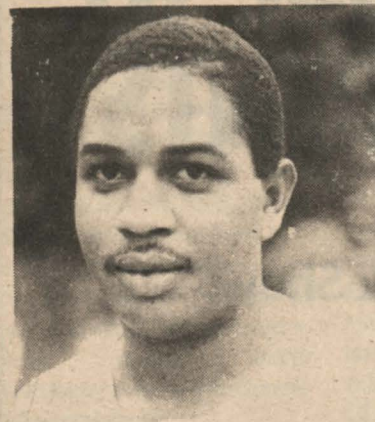
"Only free men can negotiate. Prisoners cannot enter into contracts.... I cannot and will not give any undertaking at a time

See Mandela, page 11



# Student Opinions

How do you feel about the merging of Black and White Institutions?



Adam T. Barnett of Washington, D.C. says, "I'm absolutely against the merging of black schools with traditionally white schools. Barnett went on to say if mergers are necessary for economic reasons, Black institutions should be merged together to preserve the tradition and values of the black culture."



Phyllis Turner of Houston says "I don't like the idea of Black and White colleges merging, because Black college can do just as well on their own." Turner said, for no reason should Black and White universities merge.



Ursula Funderburk of Houston says, "I don't think black and white universities should be merged. Black universities should be run by black people because, Black administrators are more suited to deal with the needs of black students."



Chris Brooks of Houston says, "I don't like the idea because, I don't think it's fair. Brooks says the only acceptable reason for merging would be in case there was no other way for the school remain open."



Tahlie Starling of San Antonio says, "I think historically Black universities and traditionally white universities should remain separate." Black schools gives blacks more opportunities. Starling also says that, a merger between the two might mean lower enrollment among blacks.

## Possible TSU and UH Merger

by Fredricka Poindexter

The possibility of a merger between the University of Houston-Downtown and Texas Southern University has been met with increasing controversy as time for the proposal to be voted on draws nearer. The merger of the two universities is only a part of the proposal which also suggests the combining of Corpus Christi State University with Texas A&I University, and North Texas State University with Texas Woman's University. In addition to this, the proposal advises that the system of colleges and universities be, for the purpose of funding and governing structure, organized into groups. The proposal would, as well, put UH-Downtown in the second tier among state research institutions as opposed to in the first tier with the University of Texas, and Texas A&M.

The proposed merger between UH-Downtown and TSU particularly stands out because it is the only instance in which the university to lose its identity is designated. Despite the idea to retain the name of TSU, it is fairly obvious that if the proposal ever is implemented, that institution would bear the thrust of the shift. The location of the new institution would be downtown with TSU's facilities being used for expansion purposes. Members of the Select Committee and others who are affiliated with the two institutions have assumed a variety of stances on the issue.

Larry Temple, chairman of the Select Committee on Higher Education, made the proposal because he feels it would "enhance the delivery of academic programs, provide for more effective and

efficient use of present and future facilities and enhance the utilization of managerial and student support services." Supporting Mr. Temple's position is Rep. Wilhelmina Delco, chairperson of the House Higher Education Committee, who believes that it could only benefit TSU since it is periodically argued before the legislature that the institution be shut down. Upholding the suggestion too is committee member, George Mitchell, who is a Houston oilman. Mitchell feels that the merger is a good choice because he does not want three minority universities, UH-Downtown, TSU, and Prairie View A&M, to exist around the Houston area. This is because he reasons that these institutions, within a certain realm, promote segregation.

On the other end of the

spectrum, TSU officials are saddened by the prospect of a merger because they feel that the school opens doors to student who otherwise may never have the chance to attend college. Eva Pickens of the TSU Media Relations Department says that TSU exists, "in the community and for the community." And we do not want to lose that. Committee member Earl Lewis, a Trinity University professor does not think it a good idea either.

For one reason he sees that a move could make access to the institution difficult for many students, and also he does not think that the two universities are alike in their "problematic" or "pragmatic ways."

UH officials, relatedly, are incensed by the possibility of a merger. The officials feel the merger would hurt UH status

primarily because of the level it would put them a research as a university. They feel that they are a much better research facility than Mr. Temple gives them credit for. On the representative level Al Luna, a member of the committee believes that since UH-Downtown lures a diverse group of students, as well as operating at a low cost, it should be left alone. Contrary to Mr. Temple's belief, Mr. Luna applauds the research ability of the University and regards it as good enough to be on a first tier level.

If the proposal can be squashed at the Nov. 21 hearing, at which officials of the respective institutions will be allowed to speak, Senator Craig Washington feels that the issue might not even have to go the legislature.

## Who Profits From Apartheid?

South Africa is unquestionably the most immoral and repressive state on the face of the earth. Despite the Reagan administration's cozy and supportive relations with apartheid, dubbed "constructive engagement", the reality of its tyranny is too monumental to obscure. Since 1967 over six and one half million citizens have been arrested and tried for pass law violations; hundreds of opposition leaders have been crippled, tortured

and even murdered by apartheid police; over one hundred laws restrict and censor the press; and since June 1961 fifteen hundred people have been "banned" by the government's Minister of Law and Order. The continuing nonviolent protests throughout the U.S., led by civil rights and religious leaders, has helped to highlight these brutalities, and has made President Reagan's support for this Nazi-like regime more difficult to justify.

But larger questions remain. Who benefits materially from the existence and perpetuation of a state whose legal justification is white supremacy? Does the investment of U.S. corporations in the regime help or hurt American taxpayers and workers? Any analysis of the political economy of South Africa illustrates that the U.S. is decisive in the running of the racist government. American corporations control 70 percent of

the South Africa computer market--in fact, an IBM computer runs the stock exchange in Johannesburg. Goodyear and Firestone sell tires to the regime, which are used for police forces.

Several multinational oil companies, including Exxon, Caltex and Mobil, have sold oil to South Africa in direct violation of the 1979 OPEC embargo. In all, about 20 percent of all foreign direct investment in South Africa comes from US firms. As of

1983, for example, Mobil Oil had \$426 million invested inside the country, with 3,577 workers; General Motors, \$243 million and 5,038 workers; Newmont, \$127 million and 13,535 workers; Union Carbide, \$54.5 million and 2,465 workers. Control Data had \$17.8 million in sales in 1983 inside South Africa, a paucity figure compared to IBM's sales of \$262 million and workforce of 1,800. American banks, led by See Apartheid, page 11

## Students Challenge Drug Testing

(NSNS) --Student athletes and leaders at several universities around the country have begun to challenge drug testing programs being adopted by their schools and the National Collegiate Athletic Association.

Such programs represent "a clear violation of Fourth Amendment rights against illegal search and seizure," says Jim Fischer, President of the Northern Illinois University Student Association. "It's about time athletes begin to take action."

More than 130 major colleges now conduct drug tests, according to the "Chronicle of Higher Education". Many of the programs conduct random spot checks monitored by "urine donor validators," or officials whose job it is to watch athletes fill sample bottles as a safeguard against substitution.

Initially, the NCAA rules and most single-school programs prompted little student opposition, due in part to many athletes' fear of reprisal from coaches and administrators.

"We've had many disgruntled athletes in here complaining about the rules, but none want to file a formal complaint," says Helen Mautner, director of the Arizona chapter of the American Civil Liberties Union (ACLU). Many

observers also attribute the initial lack of student response to ambiguous student attitudes toward drug-testing in light of the cocaine-related death of University of Maryland basketball star Len Bias last spring and the current Reagan Administration campaign against drug use.

For some students, however, strong concerns over invasion of privacy have prompted them to oppose testing programs this fall.

For example: David Derdeyn, a sophomore athlete in track and cross-country at the University of Colorado who took exception to his school's policy of random tests with donor monitoring, filed formal complaints with the Colorado ACLU in late September. The ACLU brought a class-action suit against the university October 21.

When the University of Northern Illinois announced plans at the end of August to begin mandatory testing on 15 athletes per month, Jim Fischer and the Student Association filed a protest with the administration. After intensive debate, administrators agreed to a revised program concentrating on drug education for UNI athletes, with no mandatory testing included.

Maureen Ruchhoeft, a star volleyball player at Wellesley

College in Massachusetts, has refused to sign a waiver allowing the NCAA to test her for drugs despite the risk of being ruled ineligible if her team makes the playoffs.

"I feel it's an invasion of privacy," says Ruchhoeft. "Athletic competition should be drug-free, but there's got to be a better way of going about it." Ruchhoeft, who staunchly opposes drug use, describes donor monitoring practices as "degrading" and feels that random or blanket testing "assumes you are guilty until proven innocent."

Echoing the concerns of both Ruchhoeft and Fischer is David Miller, who is acting as counsel in the Derdeyn case. "Federal and state constitutional amendments prohibit random search and seizure without any kind of individualized suspicion involved. People can argue about what constitutes probable cause (for testing), but it's clear that mere random testing without a basis violates the Fourth Amendment to the Constitution of the United States."

Miller also points out that such programs raise additional questions about federal and state constitutionally guaranteed rights to privacy, and considers the programs to be "wrongs committed by the state under state law."

## Politically Speaking

WHICH BRINGS ME BACK TO THE POINT I HAD IN MIND.....State Rep. Wilhelmina Delco, an ever present advocate for education in our state, and a key supporter for Proposition 2, which established critical resources to support Prairie View A&M, stated that she supported the measure in its' original form. The bill that resulted was a mixed bag that clearly the officials at the universities, nor the community at large favored.

Texas institutions of higher learning have been subjected to a continuum of legislative good ideas, often from people who have no knowledge of the functions of an educational institution. With the proposed legislation to merge Texas Southern University and the University of Houston, our elected officials and some appointed ones stood by their guns and declared that the merger is good for the over-all structure of education here in Texas.

Realizing that the bill is contrary to what the community desires, Rep. Delco now says that she is not in favor of the plan. What happens when an issue is subtly slid in through the back door, nine times out of ten the legislation passes unnoticed. But thanks to Rep. Delco, there was a considerable amount of attention focused to the issue.

There are few politicians left today that can maintain integrity in the grips of compromise, and rehonng the education of Texans requires someone with political

ability. We see the problem and we have joined to eliminate it, and for this awareness, we thank you Rep. Delco.

This week the Houston City Council came to grips with a hard political decision. They went on record to oppose the proposal to merge two Houston institutions, Texas Southern and University of Houston. In the course of that opposition the Texas Southern family decided to lobby their case with the state legislators at the capitol in Austin. While the final outcome is still unseen the support against such a merger is growing by leaps and bounds.



Nothing is impossible to a willing heart.

SHOP LOCALLY:

SAVE TIME and MONEY at  
**Jeo's Beauty Supply, etc.**

**SPECIAL!!**

With this coupon get a Curling Iron by NaturElle (\$10.99 value) for only

**\$6.95!!**

Available only while stock last.

CALL JENICE AT 857-5702

If we don't have it, we'll get it!

Hours: Mon-Fri - 12:00 Noon - 7:00 PM

Sat - 9:00 AM - 5:00 PM

Located in the UNCO II Shopping Center

**SPORTS**

**PV Loses Last Game**

by Angela Wilson



**Panthers In Action**

The Prairie View Panthers played their last game of the season, Saturday, November 15 against Alcorn State on their homefield. The 1986 season closed with a mark in the loss column for the Panthers. The final score was 20 to 35. 3 and 8 is the Panther record for 1986, an improvement over last year. The team seems to be slowly stepping out of the recent multi-year slump. The grid iron contest against Alcorn was a tough game, though.

Prairie View with only two losses for the season. The team also brought with them the memories of the Panthers' 1985 defeat, 7 to 41. The Panthers met the Braves with a better offense, a stronger defense and more support from PVU fans. Still the struggle was well defined and the Panthers slipped, and went down.

Kickoff was at 6:30, and began a first quarter that included one touchdown. It was the Braves who scored seven first. Early in the second quarter Cravon Rogers reached scoring territory and tied

the score. However, before five minutes ticked away Alcorn answered with another seven on a two foot lunge just after the Prairie View defense had stopped the Braves on their first attempt at that play.

The Braves were on a roll in the second, putting another seven on the board in the last two minutes.

The teams left the field and the 1st half with Alcorn ahead 21 to 7.

Late in the third quarter Prairie View made the first seven of the second half. Again, just a few minutes later Alcorn was conquering the end zone and regaining a 14 point lead. The third ended with the board reading, Prairie View-14, Alcorn-28.

There were some crowd pleasing plays by the Panthers-- some smooth catches, an interception by Rogers in the third, and a Panther recovery of an ASU fumble early in the fourth quarter. But the Panthers lost ground in missed plays and few penalties. The Braves gained yardage and another seven to make it PVU-14, ASU-35 in mid-fourth quarter.

It was the Panthers' turn to answer within just a few minutes and it was 20 to 35. In fact, further scoring belonged to the Prairie View team, in a gallant attempt to rally back. The final was again, Prairie View 29 and Alcorn 35.

**Basketball Team Wins Exhibition**

by Angela Wilson

Friday, November 21, was the day the Prairie View Baby Dome was the site and Prairie View versus the University of Americas was the game.

It was an exhibition game between the PV Panthers and the Poblanos from Puebla, Mexico. Score for score playing in the first minutes soon turned to score and score again playing for the Panthers. New faces were seen on the PVU team, along with some old faces with some new moves. There were players from last year's roster exhibiting old moves with new style the 1986 team for Prairie View is new this season, down to their purple and gold high-top tennies.

David Holloway premiered his new "skyhook" slam dunk, combined with some smooth lay-ups - and he racked-up 26 points from the field. Holloway led the scoring for PV with that 26 and two from the free-throw line. He led the rebounding stats with 11.

Reginald Jones, back for the Panthers from last season, totaled 22 points. Jones exhibited

ballhandling prowess on his trips down the court and led the Panthers with 13 assists.

Paul Barber ran down his share of the court for PV. He was third in scoring with 18 in his 20 minutes of play. His teammate, Michael Harvey, shot 12 points for the Panthers.

Loyd Lamb, a familiar Panther player, showed improved ballhandling skills, along with some other good moves. Lamb had 12 assists, some of which were in plays that put the fans on their feet. Lamar Holt came in on a few plays with 10 assists.

Defensively the Panthers were hustling, but the quick Poblanos were hot. Poblano Paul Padilla's number 10 jersey was seen in the air time after time on some smooth long range shots. But PV picked up steam in the second half to hold a 20 point lead. After a look at the score board, the team from Mexico rallied to a 6-point margin. The clock counted down the final minutes without a change and Prairie View won 95 to 81.

**Athletic Luncheon**

President Percy Pierre was the guest speaker at a luncheon held for the men and womens' basketball teams. The purpose of the luncheon was to give President Pierre a chance to meet the teams.

Also in attendance was Coach Duplantier (head coach of mens' team), Coach Atkins (head coach of womens' team), Brutus Jackson (Athletic Director), and Debora Thigpen (Sports Information Director).

Coach Atkins stated that his women's team has good potential with some great leaders on the court even though All-American Pat Walker is no long with them. Coach Duplantier's men have four returning starters this season with Reginald Jones and David Holloway returning to lead the way as captain. Michael Harvey, starting center for PV stated, "Last year we had a good season and placed second in a tournament. This year we have pretty much the same team back with a lot more going for us."

Brutus Jackson said, "We do not lack strong coaching or talent and we should be strong contenders for the SWAC."

President Pierre stated that he expects good things from both teams. He went on to say, "Athletics are important because it is a valuable experience that gives athletes an education aside from what is learned in a classroom. Athletics is a learning process that teaches you how to win whether you lose or win a contest."



**Pride and respect.  
They come with the territory.**

It's one of the first things you'll notice as a Navy Officer. The recognition that you've got what it takes to Lead the Adventure.

That adventure can lead you around the world and back again. And along the way you're picking up experience that builds confidence it takes years to get elsewhere.

College graduates start with management and leadership training at Officer Candidate School. Once commissioned, you'll have even more educational opportunities that can further professional growth.

You'll uncover your potential and get the responsibility and decision-

making authority success needs. The challenge, satisfaction and rewards add up to personal and professional growth no other job can match.

When you Lead the Adventure you start out with pride and respect. It puts you a step ahead. Contact your Navy Officer Recruiter or call 1-800-327-NAVY.

**NAVY OFFICER.**

**LEAD THE ADVENTURE.**

**PANTHER SPORTS PREVIEW**

.....for Dec. 3-16

by Gwen Johnson  
Sports Editor

- Dec. 3....Women's Basketball play at Paul Quinn College, Waco, Tx. 7:30p.m.
- Dec. 10...Women's Basketball host Sam Houston State Univ., Prairie View, Tx. 7:30p.m.
- Dec. 12...Men's Basketball travel to Southern Methodist Univ., Dallas, Tx. 7:30p.m.
- Dec. 12-13... Women's Basketball compete in the Florida A&M Univ. Tourney, Tallahassee, Fla.
- Dec. 13....Men's Basketball play at home against Florida A&M, Prairie View, 7:30p.m.
- Dec. 16... Men's Basketball go to Clemson Univ., Clemson, S.C.

Best of Luck to all Athletic programs in you quest to be the best!!

\*\*\*\*\*Year of the Panthers\*\*\*\*\*

**Prairie View A&M Graduate Helps Keep the Record Straight**

Nolan Thompson, a Prairie View graduate, has the unique responsibility of ensuring black representation in the new edition of the Handbook of Texas. The 34-year-old Handbook has suffered from a lack of attention to the black experience, and the upcoming edition planned for release in 1995 is expected to become "the standard reference work on the Texas experience well into the twenty-first century."

The role of the Handbook in preserving and presenting the Texas historical record is so significant that a two-day conference was held in Austin to gather input from more than 100 individuals who discussed the black experience in Texas and how it could be suitably communicated in the Handbook.

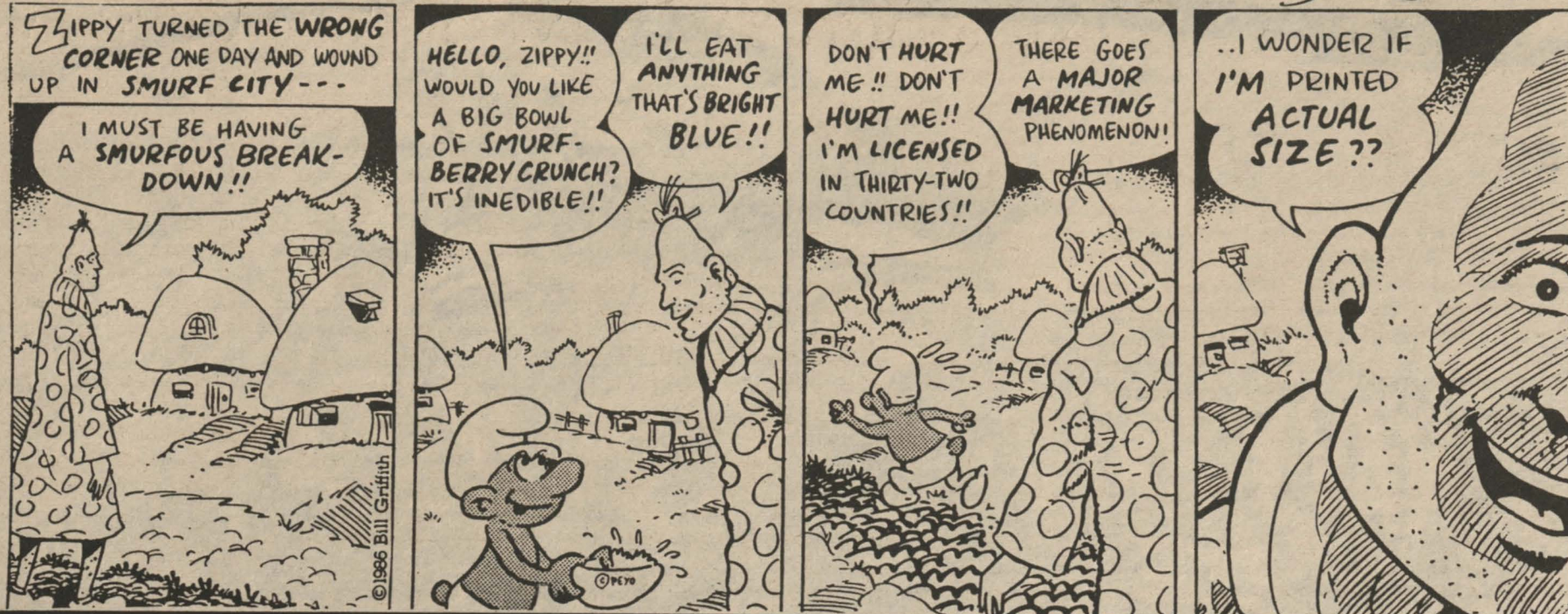
If you have suggestions on black subject matter that should be included in the Handbook, you are urged to send them to the Texas State Historical Association, Sid Richardson Hall 2/306, University Station, Austin, TX 78712, c/o Nolan Thompson.

**It's Pre-registration Time!**

Don't you want your month-long, much-needed Christmas vacation to be enjoyable and free of worry? Don't you want to be certain that you have a place in the classes that you requested? Well, it's that time again! Pre-registration has begun and you may register, until December 15, for classes next semester. However, if you fail to go to the Registration Office before Christmas vacation, late registration will take place the week of January 20th through the 24th. If you don't want to end up in Advanced Woodworking, when you wished to take Aerobics, it is to you the student's advantage to register for classes as soon as possible.

**" SMURFS IN HELL "**

Bill Griffith



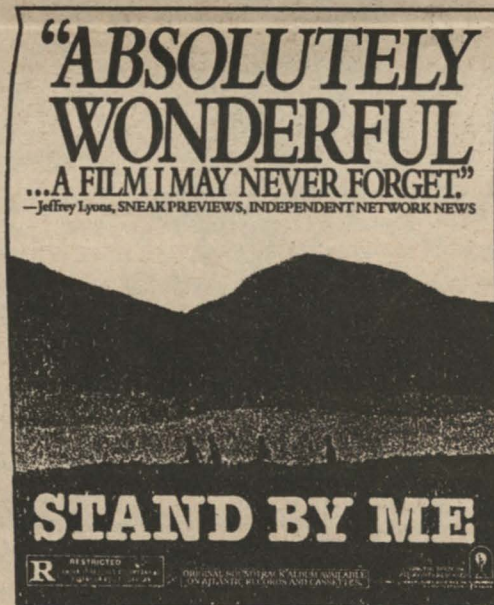
**HEMPSTEAD THEATRE**

Open 6 Days A Week - Closed Monday Night

Please Call 826-2981

For This Week's Feature & Showtimes

**COMING ATTRACTIONS!**



AN ADVENTURE IN COMEDY!

WHOOPI GOLDBERG  
**JUMPIN' JACK FLASH**

NOW SHOWING!

He's survived the most hostile and primitive land known to man. Now all he's got to do is make it through a week in New York.

PAUL HOGAN  
**THE CROCODILE DUNDEE**  
 There's a little of him in all of us.

HEMPSTEAD THEATRE  
 PHONE: 826-2981  
 HEMPSTEAD, TEXAS

**collegiate camouflage**

Answers, Page 10

I S U T S U A F R O T C O D E  
 9 A A N R E N R A M S A L I S  
 4 M N E D L A W T W A R I 8 E  
 8 M I J A N M E S J O 9 9 E I  
 E O M J I M D N I W 8 1 4 T L  
 C B A H T I M S W O R R A H F  
 A Y L T D J O E T O W A A A E  
 E D F N C A N M R A T R E N H  
 P I A I L E I L E N D R A F T  
 D C R A V J O L V T A A U R F  
 N K M A D A T T I B B A B O O  
 A O R R J I N M L E 4 J I M D  
 R B O 1 9 8 E H O 8 H 8 4 E R  
 A L Y E S S Y D O E H T 9 M O  
 W E E S U O H K A E L B 1 1 L

Can you find the hidden book classics?

- |                 |                   |
|-----------------|-------------------|
| ANIMAL FARM     | LORD JIM          |
| ARROWSMITH      | LORD OF THE FLIES |
| BABBITT         | MOBY DICK         |
| BLEAK HOUSE     | 1984              |
| BRAVE NEW WORLD | OLIVER TWIST      |
| CANDIDE         | OUR TOWN          |
| DOCTOR FAUSTUS  | SILAS MARNER      |
| EMMA            | THE ILIAD         |
| ETHAN FROME     | THE ODYSSEY       |
| HARD TIMES      | WALDEN            |
| IVANHOE         | WAR AND PEACE     |

**Survey Shows Student's Buying Attitudes**

The nation's college students are more conservative in their attitudes about a wide range of subjects than the generation which preceded them, according to the most penetrating survey of college student attitudes ever undertaken.

Student Watch '86, conducted by Simmons Market Research Bureau for the College Stores Research & Educational Foundation, provided for the first time an in-depth look at a separate and important force in America's social/political/economic picture--12.5 million students with over \$20 billion in discretionary annual spending.

The Foundation that funded the \$250,000 survey is the research arm of the National Association of College Stores, a trade association with more than 2,700 college store members and 1,000 associate members across the U.S., Canada and other countries.

Based on responses from 4,349 randomly selected students who answered a 29-page questionnaire, this picture of general attitudes emerged from America's college and university campuses.

Fifty-six percent think sex before marriage is always or sometimes wrong, while 95% believe sex outside marriage is always or sometimes wrong, and 69% prefer postponing marriage until they have achieved other goals. 70% believe that cigarettes

are harmful and 48% indicated they would not even date someone who smokes.

84% think cocaine is harmful and 62% believe marijuana use is also unwise, but only 10% feel that way about alcohol. 73% favor the death penalty, and 69.9% think abortion should be legal.

Respondents expressed their political views and alignment; 37% considered themselves Republicans, 31% independents, and only 28% listed themselves as Democrats.

Doctors, scientists, and professors are highly respected by students. But reporters, government workers, and

politicians had better mind their "public image," because 60%, 47% and 70%, respectively, of students had little or no trust in these professions.

Sixty-nine percent of the students said religion was important to varying degrees in their lives, and 26% said they attended religious services at least once a week; 51% attend at least once a month.

The survey also provided an insight into financial habits of students, including the fact that 48% live off campus, and in effect run households. 50% of the respondents get more than half of their discretionary income from their own earnings, and 58% of those said they earned over \$2,000

last year, while 25% earned over \$5,000.

When it comes to discretionary spending, 61% said they had \$100 per month or more to spend. 19% in that group has between \$150-249 and another 19% spend \$250 or more. Largest dollar expenditures by students during the school year were at the college store, with a median of \$248.61.

Ninety-six percent said they spent more money on clothing during the past school year than on any other category--with a median expenditure of \$187.40. Four percent of all discretionary income was spent on health and beauty aids.

See Student's, page 10

**Midshipmen Honored For Military Excellence**

Midshipmen and Navy staff were honored for academic and military excellence on Thursday, Nov. 13. Midshipmen of the Prairie View A&M University Naval ROTC received ribbons and certificates for academic and physical achievements; Navy staffers received medals for years of service.

Fifteen midshipmen were awarded either the Distinguished Midshipman Award for students with a 3.0 grade point average (GPA) or Scholastic Achievement Award for students with a cumulative GPA of 3.0 and above and an aptitude grade of, at least, 3.0 or both. They were as follows: Both Distinguished Midshipman and Scholastic Achievement (DMA and SAA, respectively)- 3/C Kathy Davis, 3/C Chris Galvez, 3/C Juan Gonzalez, 3/C Darryl Harris, 3/C Hiawatha Jordan, and 3/C Duane Juvvert.

Also; 3/C Alfred Marshall, 3/C John Morton, 3/C Troy Johnson, 3/C Gregory Smith, 1/C Sarah Jones, 1/C David Wray, and 1/C Derrick Roberts.

DMA recipients: 3/C Eric Brown, 1/C Rachel Pruitt, and 1/C Karl Johnson.

Midshipman 1/C Michael Malone received the Scholastic Achievement Award.

The Battalion Physical Fitness Award is awarded to those midshipmen who attain a score of 250 points and higher in the areas of sit-ups, flexed-arm hang (females) and pullups (males), and a 2-mile run (females) and 3-mile run (males). Seventeen midshipmen scored above 250-point mark. They were as follows: 4/C Joann Aguilar- 257 pts.; 4/C Ron Livingston - 258; 4/C Brent Miller - 259; 4/C Paul Reed - 279; 3/C Ron Watson - 278; 3/C Gregory Phillips - 276;

and 3/C Christopher Galvez. Also 3/C Jose Luna - 267; 3/C Kathy Davis - 262; 3/C Don Gray - 255; 3/C Eric Brown; 2/C Charles Bolar - 264; 1/C Sarah Jones - 271; 1/C Derrick Roberts - 267; 1/C Cleveland McCalister - 263; 1/C Rena Taylor - 257; and 1/C Rachel Pruitt - 255.

SKC Reece Cox was honored with a plaque from CDR Lee T. Womack, Professor of Naval Science, for reenlisting for another four-year hitch with the U.S. Navy. Cox has all ready been in the service 24 years.

Newly arrived QMC Arthur Little received his third Good Conduct award. The award is granted for four years of excellent performance in the Navy.

YNCS John Gosnell received the Naval Achievement Medal gold star. The star is given in lieu of a second medal. Gosnell served aboard the U.S.S. Guitarro; (SSN-65) during the period his award covers.

In other NROTC news, MIDN 4/C Jerry Bailey was named Midshipman-of-the -Month for

October. The award is given to a sophomore or freshman midshipman who displays excellence in aptitude, extracurricular activities, military bearing, and academics. Bailey is a Pre-med major and Marine Corps option midshipman. He hails from the Naval ROTC unit at Mary Carroll High School in Corpus Christi, Texas.

MIDN LT Jose Luna accepted, for the Blue Guard Drill Team and Color Guard, a 2nd-place trophy for the drill competition at the PVAMU Homecoming Parade. He also accepted on behalf of the drill team a certificate from the Statewide Youth Committee for participating in the Statewide Youth Eighth Annual Parade in Bryan in September.

MIDN 2/C Walker Wooding received his graduation certificate from the Naval Science Institute in Newport, Rhode Island. The NSI school is for sophomores who want to join NROTC. They attend the six-week school to catch up on the courses they missed from the first two years of NROTC.

**Campus Trivia**

Question: Name the three(3) most recent Presidents of Prairie View A&M and state how long they stayed in office.

Question: When did Prairie View change its status from a College to a University?

NAME.....  
 ADDRESS.....  
 TELEPHONE.....

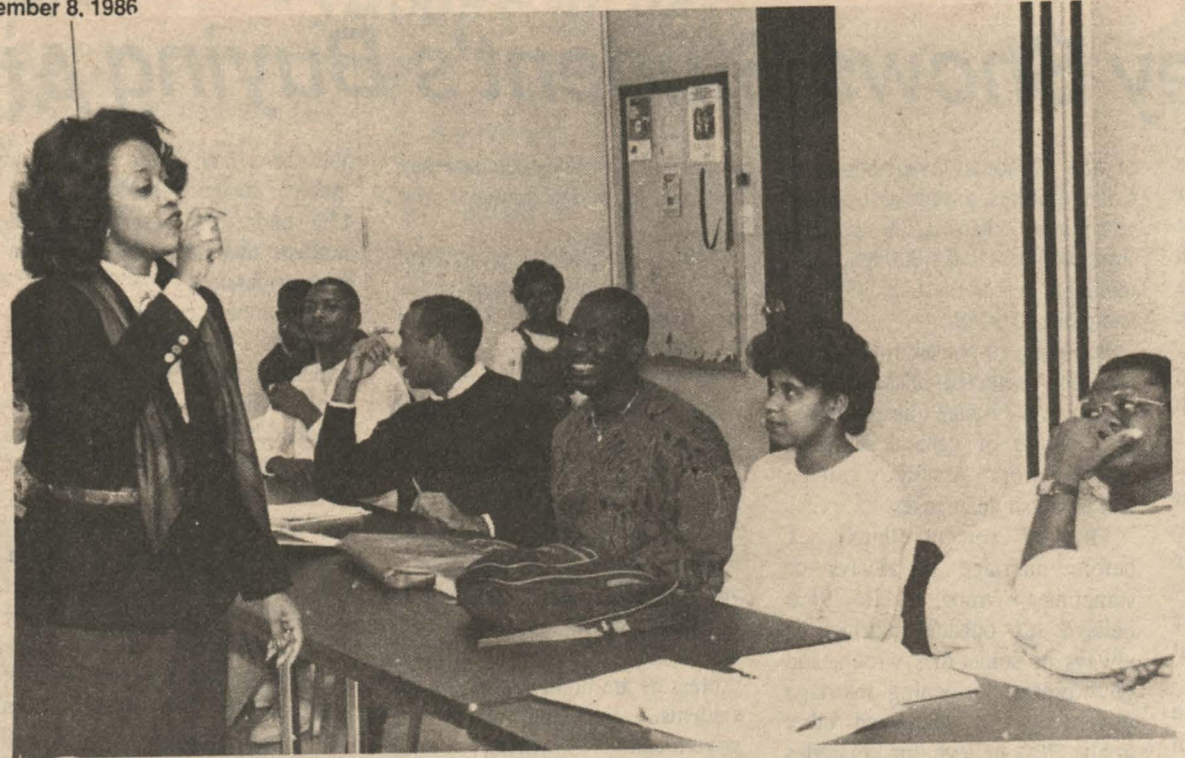
Submit your answers to THE PANTHER  
 Rm. 209  
 Hilliard Hall

The first correct entry opened will receive four(4) tickets to see any movie at the Hempstead Theatre.

### Seminar from page 1

manners, decorum, politeness, courtesy, the golden rule. In short, it's what is known as having "class." She stressed the fact that "class" can not be purchased in major department stores, or in designer names. "It doesn't cost a dime to be nice," she added.

The two day workshop and seminar concluded with a banquet to which all of the heads of student organizations were invited to attend. Ms. Brenda Lorrick Director, Counseling and Career Development felt it would be a good way to mainstream Ms. Shelton's ideas. Video cassette recordings of the presentation will be made available to all student organizations. The program was especially effective as questions were entertained during the appetizer and meal about eating etiquette and table manners. Ms. Shelton commented upon her



Carolyn Shelton Speaks On Corporate Etiquette

departure that Prairie View A&M University was by far the most

professional and enthusiastic campus she had visited thusfar.

### Students from page 9

In other survey highlights, 56% have and use bank credit cards, 41% have borrowed money to attend college, and 86% have savings accounts. College students are owners of high-priced items as well: Sixteen percent have a new car, 39% purchased a used car; 78% own a television set, 66% a stereo system; 36% a 35mm camera and 17% a computer.



Every day, more than 107,000,000 Americans—seven out of 10 adults—read a daily newspaper.

### Apartheid from page 4

Chase Manhattan, Chemical, Bankers Trust, First Boston and Manufacturers Hanover, had outstanding loans totaling nearly \$4 billion as of 1984.

The reasons for U.S. corporate interest in South Africa are easy to explain. Despite the union membership of about 350,000 African laborers, the vast majority of the nonwhite labor force is unorganized. Strikes are illegal, and non-white union activism is viciously repressed. The majority of Black workers live in poverty. Even according to the biased statistics of the apartheid government, African households below the official poverty level include 62 percent in Johannesburg, 65 percent in Durban, and 70 percent in Port Elizabeth. Racial segregation lower nonwhite labor costs. Using May 1983 figures, the average monthly wages in all manufacturing firms was \$1,290 for whites, \$460 for Indians, \$365 for Coloureds, and \$320 for Africans. According to the "Survey of Current Business, U.S. companies averaged 18.7 percent annual rates of return on capital investment between 1979 to 1982. Apartheid laws and the rigid regimentation of nonwhite labor reap their rewards.

How does this investment affect Americans? Researchers for the Washington Office on Africa and the Civil Rights Department of the United Steelworkers of America recently prepared a brief study on this issue. For several years, the U.S. steel industry has experienced a state of rapid collapse. Between 1974 and 1982 domestic steel production declined by 50 percent. In 1983, the seven largest steel producers reported losses of \$2.7 billion that year alone. Major

industrial towns dependent upon steel productivity to generate jobs have had staggeringly high rates of joblessness. Simultaneously, the U.S. steel industry has ciphoned domestic profits and reinvested them in Third World nations where authoritarian regimes guarantee a low wage, nonunionized labor force. Imports from foreign nations producing steel now exceed one-fifth of the domestic market. And since 1975, U.S. imports of apartheid's steel have increased 5,000 percent.

South African steel is largely produced by a state-owned firm, the Iron and Steel Corporation (ISCOR). All of the major U.S. companies which have experienced difficulties producing steel at home—ARMCO, Allegheny Ludlum, U.S. Steel, Phelps Dodge, and others -- have invested millions into apartheid's industries. Recently, Chicago's

Southworks steel plant, owned by U.S. Steel, laid off several thousand workers, on the rationale that U.S. workers weren't sufficiently productive and that the plant wasn't making profits. Then local steelworkers learned that the steel beams used to build a new state office building in Chicago had been imported from South Africa -- despite the fact that Southworks produces the identical steel beams. Even more outrageous was the fact that Continental Illinois Bank has loaned money to ISCOR, which had produced these beams. In short, Chicago laborers were giving their hardearned wages to a local bank, which in turn financed a competitor which was stealing their jobs!

There are dozens of similar examples. The Phelps Dodge copper mining corporation has a poor record on domestic labor relations, and has called for wage cuts from its workers. But in its

### Shots

from page 10

If the children had one shot of 86-87 Trivalent, they will get Trivalent and Monovalent simultaneously in 2 sites more than 4 weeks after the first Trivalent. If they had 2 shots they will get Monovalent more than 4 weeks after the Trivalent.

### Blackout

from page 3

According to Security and several students, gun shots were fired near Holley Hall. This commotion is thought to have stemmed from a confrontation between two groups on campus. No one was reported injured in the incident.

Investigations regarding the confrontation are still in affect.

### Mandela

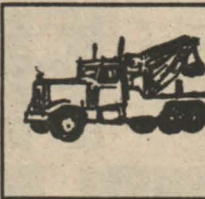
when I and you, the people, are not free.

"Your freedom and mine cannot be separated. I will return."

Mandela remains imprisoned at the Pollsmoor maximum security prison near Cape Town, despite the growing movement in South Africa and throughout the world demanding his release.

HABLA NELSON MANDELA contains Spanish translations of Mandela's courtroom testimony in 1962 and 1964, and the Freedom Charter, the key document of the South African freedom struggle.

Both books contain photographs of Mandela, his wife, Winnie, and protest activities in South Africa. These books are available in local bookstores or by mail from Pathfinder Press, 410 West St., New York, NY 10014.



**CAR PROBLEMS !!! ?  
DON'T WORRY ! ! ! ! !  
GET HELP IN A HURRY !!!  
CALL**

### MANUEL'S AUTO REPAIR

We Offer To All Prairie View Students:

- \* 15 % discount for repairs done to all American Vehicles
- \* the lowest prices on any tow job inside Waller County

We are located at Wyatt Chapel Road near FM 1098 loop. Our phone number is 857-3526.

**Remember. ALL IS WELL AT MANUEL'S**

The party begins.

*I can drive when I drink.*

2 drinks later.

*I can drive when I drink*

After 4 drinks.

*I can drive when I drink.*

After 5 drinks.

*I can drive when I drink*

7 drinks in all.

*I can drive when I drink*

The more you drink, the more coordination you lose. That's a fact, plain and simple.

It's also a fact that 12 ounces of beer, 5 ounces of wine and 1 1/4 ounces of spirits all have the same alcohol content. And consumed in excess, all can affect you. Still, people drink too much and then go out and expect to handle a car.

When you drink too much, you can't handle a car. You can't even handle a pen.

A public service message from **Will Rogers Institute**

## The Influenza Virus

Influenza is a respiratory disease caused by the influenza virus infection. Symptoms of the flu include fever, chills, headaches, dry cough and muscle aches. These symptoms can last for more than a week or they can last for several days. Although most people can recover quickly, some people come down with cases of pneumonia or even death.

People who are at risk when flu season starts (which is usually the winter time) are the elderly (65 or older) or any age group with certain chronic conditions (diabetes, heart disease, etc.)

This year, the U.S. Public Health Service believes that people should receive two vaccination shots due to the new Type. A strain influenza virus that is spreading. They feel people should get the standard Trivalent vaccine as well as a supplemental Monovalent vaccine, only at different times.

For example, if children who are 6 months to twelve years old are primed (had flu vaccines from 1978-79-85-86), and they have not had a Trivalent flu shot this year (86-87), they should receive the Trivalent and Monovalent

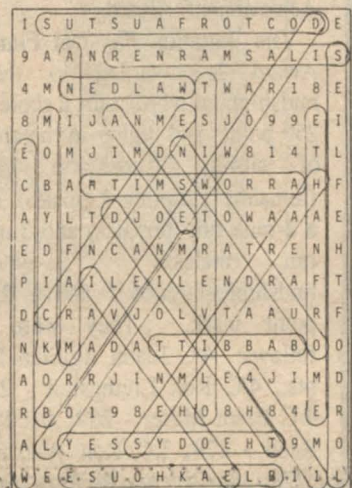
Vaccines simultaneously in 2 different sites.

If they have had one shot of 86-87 Trivalent vaccine, they should get Monovalent vaccine more than 4 weeks after the Trivalent. If they are unprimed and had no shots of 86-87 Trivalent, they need Trivalent and Monovalent simultaneously in 2 sites on each of 2 visits more than 4 weeks apart.

See Shots, pg. 11



The kingbirds are among the most quarrelsome birds in existence. They will fearlessly attack and drive away any birds—including eagles and hawks—that venture on their domain.



**R & D  
LIQUOR MART**

- Come in and check-out our Great Selection
- Non Alcoholic Wines Available

Drive-Thru Window  
**Mon-Sat:  
10 AM to 9 PM**

WALLER VILLAGE SHOPPING CENTER  
**372-9448**

Rudy Kolich      David Lundy

### Looking For Good Used Auto Parts?

**MIKE'S AUTO PARTS INC.**

- |               |                 |
|---------------|-----------------|
| BODY PARTS    | AXLE ASSEMBLIES |
| ENGINES       | TIRES           |
| STARTERS      | WINDSHIELDS     |
| WHEELS        | ALTERNATORS     |
| TRANSMISSIONS | BATTERIES       |

We Install What We Sell

**409 826-8225**

Hwy 290 East

Hempstead

# FINALLY A FREE FLIGHT PLAN JUST FOR STUDENTS. YOU WON'T GET A BREAK LIKE THIS ONCE YOU'RE OUT IN THE REAL WORLD.

## INTRODUCING COLLEGIATE FLIGHTBANK FROM CONTINENTAL AND NEW YORK AIR.

If you're a full-time student at an accredited college or university you can join our Collegiate FlightBank.<sup>SM</sup> You'll receive a membership card and number that will allow you to get 10% off Continental and New York Air's already low fares. In addition, you'll get a one-time certificate good for \$25 off any domestic roundtrip flight. Plus, you'll be able to earn trips to places like Florida, Denver, Los Angeles, even London and the South Pacific. Because every time you fly you'll earn mileage towards a free trip. And if you sign up now you'll also receive 3 free issues of BusinessWeek Careers magazine.



*This Porsche 924 can be yours if you are the national referral champion.*

### SIGN UP YOUR FRIENDS AND EARN A PORSCHE.

But what's more, for the 10 students on every campus who enroll the most active student flyers from their college there are some great rewards: 1 free trip wherever Continental or New York Air flies in the mainland U.S., Mexico or Canada.

Or the grand prize, for the number one student referral champion in the nation: a Porsche and one year of unlimited coach air travel.

And how do you get to be the referral champion? Just sign up as many friends as possible, and make sure your membership number is on their application. In order to be eligible for any prize you and your referrals must sign up before 12/31/86 and each referral must fly 3 segments on Continental or New York Air before 6/15/87. And you'll not only get credit for the enrollment, you'll also get 500 bonus miles.

So cut the coupon, and send it in now. Be sure to include your current full time student ID number. That way it'll only cost you \$10 for one year (\$15 after 12/31/86) and \$40 for four years (\$60 after 12/31/86). Your membership kit, including referral forms, will arrive in 3 to 4 weeks. If you have a credit card, you can call us at 1-800-255-4321 and enroll even faster.

Now more than ever it pays to stay in school.

SIGN ME UP NOW! (Please print or type)  1 Year (\$10)  2 Years (\$20)  3 Years (\$30)  4 Years (\$40)  
Must be submitted by 12/31/86.

Name \_\_\_\_\_ Date of Birth \_\_\_\_\_  
College \_\_\_\_\_ Address \_\_\_\_\_  
Zip \_\_\_\_\_  
Permanent Address \_\_\_\_\_ Zip \_\_\_\_\_  
Full time student ID # \_\_\_\_\_ Year of Graduation \_\_\_\_\_

\$ \_\_\_\_\_  Check/Money Order Enclosed PLEASE DON'T SEND CASH  
 American Express  Visa  MasterCard  Diner's Club

Account Number \_\_\_\_\_ Expiration Date \_\_\_\_\_  
Signature **X** \_\_\_\_\_

FOR MEMBERSHIP APPLICANTS UNDER THE AGE OF 18: The undersigned is the parent/guardian of the membership applicant named hereon, and I consent to his/her participation in the Collegiate FlightBank program.

Signature **X** \_\_\_\_\_

Send this coupon to: Collegiate FlightBank  
P.O. Box 297847  
Houston, TX 77297 1052

Complete terms and conditions of program will accompany membership kit.

**CONTINENTAL** **NEW YORK AIR**

Some blackout periods apply for discount travel and reward redemption. Complete terms and conditions of program will accompany membership kit. Certain restrictions apply. Current full time student status required for each year of membership. To earn any prize a minimum of 12 referrals is required. All referral award winners will be announced by 8/1/87. 10% discount applies to mainland U.S. travel only. Students must be between the ages of 16 and 25. Porsche 924 registration, license fees, and taxes are the responsibility of the recipient. © 1986 Continental Air Lines, Inc.