

Prairie View A&M University

Digital Commons @PVAMU

PV Panther Newspapers

Publications

6-1985

Panther - June 1985 - Vol. LXIII, NO. 8

Prairie View A&M University

Follow this and additional works at: <https://digitalcommons.pvamu.edu/pv-panther-newspapers>

Recommended Citation

Prairie View A&M University. (1985). Panther - June 1985 - Vol. LXIII, NO. 8., *Vol. LXIII, NO. 8* Retrieved from <https://digitalcommons.pvamu.edu/pv-panther-newspapers/267>

This Book is brought to you for free and open access by the Publications at Digital Commons @PVAMU. It has been accepted for inclusion in PV Panther Newspapers by an authorized administrator of Digital Commons @PVAMU. For more information, please contact hvkoshy@pvamu.edu.

Summer Programs

Page 2

Juneteenth
Remembered

Page 3

Panther Honored

Page 4

Edited & Published by
Students at Prairie View

the

Prairie View
A&M University

Volume 63
Number 8



PANTHER

June 1985

Senator speaks at Luncheon

By Gloria Boyd

"We hope you continue to strive to reach your educational and career goals," were part of the remarks that Senator Kent Caperton gave to approximately 250 youth and adults who attended the 4th Annual Career Awareness and Youth Leadership Lab Awards Luncheon sponsored by the Cooperative Extension Program at Prairie View A&M University on Friday, June 14th in Alumni Hall.

Senator Caperton went on to say that he was proud of the youth, who ranged in age from 14 to 19, and wished them continued success.

Several of the youth received awards and scholarships. Scholarship award winners were Ollie Witchett of Waller County who received a scholarship to the College of Agriculture at Prairie View A&M University and Patricia Bradley of Falls County who received a scholarship to the College of Home Economics at Prairie View A&M University.

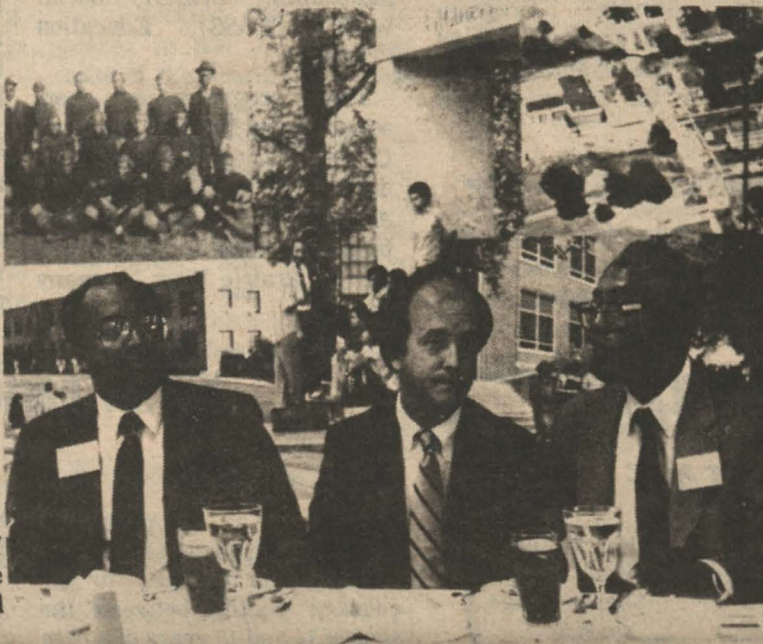
The scholarships were awarded

from Citizens State Bank in Hempstead and Guaranty Bond State Bank in Waller.

Other award winners include: Odette Brodie, Austin County, and Kenneth Green, Falls County, who were elected "Most Talented Girl" and "Most Talented Boy" respectively. The \$50.00 cash award that they received was donated from Dr. Barbara Washington, resources specialist at Fort Bend Independent School District.

In addition, Tracy Butler of Falls County, and Witchett were voted "Outstanding Girl" and "Outstanding Boy".

Other persons attending the awards luncheon were: Dr. Zerle Carpenter, Director of the Texas Agricultural Extension Service; Dr. Percy Pierre, President of PVA&MU, Dr. Thomas Cleaver, Executive Vice-President of Academic Affairs, PVA&MU; Dr. Flossie Byrd, Dean, College of Home Economics, PVA&MU; Hoover Carden, Cooperative Extension Program Administrator at PVA&MU; and a host of extension personnel and friends.



Senator Caperton, center, enjoys luncheon festivities with President Pierre, left and Administrator Carden.

Campus undergoes \$23.4 million renovation

By Teddy Dikas
Managing Editor

The campus outlook of Prairie View A&M University is under a master plan that extends to the year 2000.

The director of the Physical Plant, Gerald Kelly, said that the 1985 project which is in progress on the campus now, is a part of the university's general master plan. He said

the construction's estimated cost of about \$23.4 million was approved by Texas A&M Board of Regents.

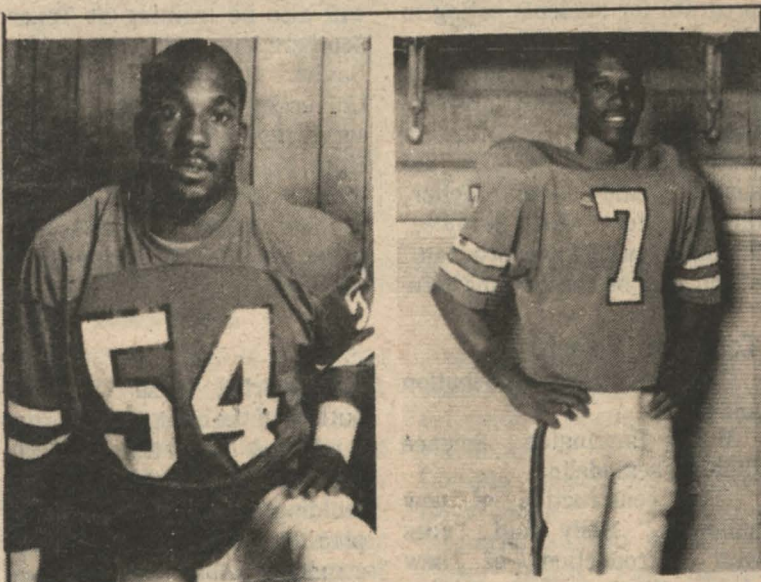
"With my assistance to the president of the school," Mr. Kelly said, "the construction needs were drafted and sent to the board for approval." He said that after the approval of the project, the contracts were assigned by professionals who take care of that part of the project. He said the construction program starts from the general plan, then gets to specifics.

The total number of contracts progressing under the 1985 project include:

- All Faith Chapel
- Central utility plant and distribution system,
- Central utility plant and distribution system, Phase II (Water distribution system)
- IBBM Gate Valves,
- General office and classroom building,
- Water well for irrigation,
- Engineering technology building
- Repair and extend streets
- 1983 - 85 R&R Program,

Continued p. 2

**The Panther Needs
Applications For Staff
Positions. If Interested
Contact Sharon Hodge Or
Teddy Dikas At 857-4511
Or Sign Up In Room 216
Hilliard Hall.**



Michael Lomax and Ernest Brow will lead the Panthers this year as they begin the season in the Labor Day Classic. See page four for details.

Extension announces opening of summer camp

The Cooperative Extension Program at Prairie View A&M University announces the opening of the H.S. Estelle 4 - H & Youth Camp located near Huntsville, Texas, June 24 through August 9, 1985. This will mark the eleventh summer that the Cooperative Extension Program has implemented a residential camp for boys and girls age 9 to 19.

Campers will be recruited from at least 10 surrounding Texas counties, and they will participate in activities such as archery, singing, arts and crafts, woodwork and horseback riding. The campers will also take classes in natural resources, computer usage, health & nutrition and clothing.

The registration fee is \$20.00 per child for the one week, Monday through Fridays. Meals

will be sponsored through the Texas Department of Human Resources Summer Food Service Program. The Department has certain criteria for determining the eligibility for those persons participating in the Summer Food Service Program. Free meals will be offered to all children in attendance without regard to race, color, handicap, sex or national origin if the Summer Food Service Program requirements are met. Listed below are the eligibility standards for the Summer Food Program.

Youth can contact the local county Extension office 857 - 2517 or 857 - 2227 for more information.

THE PANTHER EDITORIAL STAFF

EDITOR.....Bert Bilton
MANAGING EDITOR.....Teddy Dikas
NEWS EDITOR.....Sharon Hodge
ASST. NEWS EDITOR.....Ron Pilot
COPY EDITOR.....Joyce Norris
SPORTS EDITOR.....Joyce Johnson
PHOTOGRAPHY EDITOR.....Rayford Outland
CIRCULATION MANAGER.....Rayford Outland

BUSINESS STAFF

ADVERTISING MANAGER.....Veronica Banks

LETTER POLICY

Letters to the editor should be 300 words or less. The staff reserve the right to decide which letters will be published, and has the right to edit any letters for style and length. Every effort will be made to preserve the content of the letters submitted. Each letter must be typed or legibly hand written, and must include the name, address and phone number of the writer. All letters submitted become the property of the Panther.

PANTHER EDITORIAL POLICY

The Panther is a non-profit, self-supporting publication. All editorials published are discussed and written by the editorial staff, unless the material is submitted by a guest columnist. The views and opinions of this paper are not necessarily those of Prairie View A&M University, or the Texas A&M University System.

The Panther will accept news submissions from campus organizations and individuals at the office or by telephone at 857 - 4511

We request that the material be typed, double spaced, with the name and telephone number of a contact person. We reserve the right to editorial discretion concerning publication of submitted items and photographs.

The Panther serves the university community and the surrounding area. It also serves as a laboratory for Communication majors and gives them hands-on-training in their chosen career.

Enrichment program schedules summer workshops

By Rochelle Gowans

This summer the Prairie View A&M University Institute for Pre - College Enrichment, has invited approximately 74 high school students to its First summer 85 workshop. There will be two more workshops schedule.

The programs include: Engineering (MITE), Mathematics & Computer Science (MCEE), Biology & Nursing (SCOPE), Home Economics (CHEE), Social Work (CLASS), Education (TECS).

These programs are sponsored by the Institute for Pre - College Enrichment and coordinated by Ms. S. Kuykendall. Although this is the first year for all programs MITE has been part of Prairie View for many years.

The students that participate in this program must have completed the 10th or 11th grade, and have a desire to learn about the variety of careers available to individuals with training in a professional degree program, have a positive attitude about learning, a strong desire to succeed, and a good scholastic record with special interests in each profession. The students must possess these qualities to receive a scholarship that pays for transportation, tuition, fees, books, supplies, room and board

for the 2 week duration of the program. Emergency medical care is also provided. In return, the students are expected to work conscientiously during the program.

In addition to these programs, several recreational and cultural activities are planned which include: field trips to Astroworld, and Music Hall for the Fleica Ayers Allen of the Cosby Show and Debbie Allen of the hit show "Fame." Housing is provided for them in reserved sections of campus dormitories and dining in Alumni Hall, where they (the students) can interact with other summer session students. A complete staff of counselors and peer counselors are assisting the students in adjusting to University life.

Y.O.U. participants earn while learning

By Sharon Hodge

Youth Opportunities Unlimited Program (Y.O.U.), is a program designed to encourage youths between the ages of 14 and 15 years of age to continue their education and better their learning skills in the areas of English and math, said the head master of the program, Dr. Michael Ard.

The program's funds are provided by the Service Delivery Area, who is funded by the Texas Department of Community Service. Each university or college campus combines in an intensive, 8 - week period of basic education, work experience and a range of supportive services.

The supportive services emphasize health, counseling and elective courses which, combined with the required academic and work experience, constitute a total immersion program for the ninth - graders and tenth - graders who attend.

Participants are housed on campus, and they divide their work week in even proportions among classroom instruction in mathematics, language, career awareness, study sessions, computer literacy courses, counseling, and limited social and recreational activities.

Participants are paid minimum wage for 25 hours per week of combined career readiness training and em-

ployment. Successful completion of the course work in mathematics and language can earn each student one credit toward high school graduation.

There are 100 students participating in the program this summer. The requirements that each students must meet is they first must meet the requirements of Job Training Partnership Act (JTPA). They must also live inside Houston or outside the city in Harris County.

The family income is also a factor to whether or not a student is eligible for the program. Ten percent of the program's participants come from middle upper class families.

Jobs are assigned to the students at each university or private non - profit organization. At the end of the program a student may earn as much as \$670.00.

ARA begins Pizza service

By Rochelle Gowans

ARA is the food administration division of Prairie View A&M University. The new idea is to start a pizza service program for students eating in Alumni Hall. It will be pizza with several types of toppings, which will be offered starting this summer. The best time to start anything new is in the summer, said Marshal Keller, director for ARA Services. Training for this new program, which will be for old and new

Continued from p. 1

Electric power distribution and lights

M.T. Harrington Science Building remodeling,

"The construction of new buildings," Kelly said, "goes with introduction of new classes. Woodworking and other courses will be introduced as soon as the buildings are ready." He said the contracts will be inspected upon completion and turned in for use.

employees, will begin this summer. It will be an orientation type program to train employees. Other employees, such as Mr. Williams and Mr. Bell will also be training at Texas Southern University in Houston, Baylor University and the University of Arkansas to observe their program, get new ideas, and improve at the same time. Keller has been trying to get this idea in motion for a year.

Comparing the current outlook of the campus with what it will look like in the year 2000, Mr. Kelly said that some more buildings are still on the master plan. He said among other construction, the new library building is under the 1986 project. The director said that efforts have been made to ensure that the contractors are doing what they were asked to do.

President says "thanks"

By Mary Powell

As your newly elected SGA President I would first like to thank you for your vote of confidence. I know this will be an exciting and rewarding year for all concerned. I would like for this school year to bring about high achievements in academics, student participation, and pride in Prairie View A&M University.

Our school has undergone tremendous improvements to the facial outlook of our campus. This should not be the only improvements that we ex-

perience here at Prairie View. We need to take Patti's advice and get a "New Attitude." As students and faculty we need to take new pride in our University, and to take an active part in the activities that are held at our University.

I want the help of you, the student body, to aid us in continuing to make Prairie View A&M University better. No one can do it alone. We the students are the foundation of this University and it will take all of us to make a difference at Prairie View A&M University.

A student remembers Juneteenth

By Sharon Hodge

Freedom arrived officially for black Texans on June 19, 1865, when federal troops landed at Galveston. Emancipation actually came as Union troops spread out over the state and as individuals slaveholders accepted the results of the war and freed their bondsmen. East Texas Newspaper editors in the summer of 1865 urged slaveholders to maintain control over their slaves.

"Everybody went wild," recalled Felix Haywood, "we was free. Just like that, we was free."

Certainly freedom seemed unreal for many until they left the farm or plantation where they had labored and found that no one forced them to return. Some sought better employment or land of their own. Others satisfied their curiosity about towns and stayed to enjoy the greater religious, social, and educational opportunities of urban life.

A more diverse social life developed in Texas towns where Negroes celebrated holidays such as Juneteenth -- Texas Emancipation Day in June. Parades, dances, barbecues, political speeches and concerts are all a part of the Juneteenth

celebration. Therefore, on June 19, 1980, the Governor of Texas, declared Juneteenth as the official Emancipation Day in Texas, and pledged continuing efforts for a better quality of life for all citizens.

A student remembers Juneteenth

By Amos Jones

Juneteenth 1865 is a day that will be remembered by all black people in the south.

The Prairie View A&M Student Memorial center has commemorated this day by such activities as, a picnic and dinner on the west side grounds of Alumni Hall, also a speech by Mr. Frank Jackson and a performance by the Charles Giplin player (Profiles in Black) at Hobart Taylor recital hall.

We want to give a note of thanks to the sponsors of these activities: Chairperson Kim Washington, President of Housing Association, Student Government Association, Memorial Student Center Advisory Board, Pan Hellenic Council of Student Organizations, Chancellors Student Advisory.

Students, faculty share common problem

the potential for student burnout.

Students and faculty members may have more in common than they think when it comes to occupational burn - out. At least, that's one of the conclusions drawn by two researchers at Southern Illinois University who measured burnout and its effect upon the student's potential for recall (memory), learning processes, self - esteem, vocational concept, and sensation seeking. The study appeared in the January, 1985 issue of the Journal of College Student Personnel.

Burn - out is described as "diminished expectations for work rewards, accompanied by physical and emotional exhaustion." The phenomenon of burnout has long been examined in the work place, little attention has been given to

Researchers Scott Meier and R.R. Schmeck set out to develop a means of measuring burnout based on student performance. While Meier and Schmeck were unable to identify a specific cause for burnout, they did find a relationship between burnout and the student's ability to retain study materials. The researchers suggest that "students who lack academic skills suffer more," than other students, when experiencing burnout. Other items affecting student ability, in relation to burnout, included a lack of variety in the student's daily life; low self - esteem (lack of good feelings about self), and unclear career goals. Further, students who loses focus of career objectives tend to dropout of school.

A student remembers Juneteenth

By Rochelle Wilson

June 19, 1865, has been celebrated by black Americans in this part of the country as Emancipation Day in high honor of the Emancipation Proclamation and the freeing of slaves.

President Abraham Lincoln on September 22, 1862, presented a proclamation which became effective on January 1, 1863, and proclaimed that "all persons held as slaves within any state...shall be then, hence forward and forever free."

It is most appropriate that on this day we rededicate our efforts to the purpose of advancing the cause of freedom, equal opportunity and equal justice for all Americans.

Therefore, on June 19, 1980, the Governor of Texas, declared Juneteenth as the official Emancipation Day in Texas, and pledged continuing efforts for a better quality of life for all citizens.

Financial Aid Director corrects the Panther

Dear Mr. Bilton:

The May 7 - 14 Edition of the Prairie View Panther indicated that tuition will increase for the 1985 - 86 school year and that the academic requirement for financial aid has risen from 2.0 to 2.5.

First I would like to address the statement that the academic requirement for financial aid has risen to 2.5. This is not true. Students enrolled at Prairie View must still have a cumulative grade point average of 2.0. No discussion has taken place to increase the grade point average requirement for financial aid students.

Secondly, federal financial aid funds are on a decline but Prairie View students still may apply for and receive financial assistance. However, the key to receiving a favorable financial aid package is to apply early. Students are encourage to get their aid application in now.

Third, tuition has tripled for both in - state and out - of - state students. But Prairie View is not raising tuition, the State Legislature is for all public institutions. The new tuition rate for in - state students will be \$12 per hour however, students who are eligible for maximum financial aid will be able to withstand this increase through their

It's interesting to note that, according to Meier and Schmeck, burn - out students seem to be "less active, inquisitive, and interested" in what takes place in the academic environment.

In conclusion, the researchers suggest burn - out students and burn - out instructors feed upon the others affliction creating a "downward spiraling effect."

"Teachers may burnout because their burn - out students cannot demonstrate the progress that teachers value. Students may burnout because of the lack of caring and the boring routine in classes taught by burn - out instructors."

festive and elaborate events.

Today, black Americans honor Juneteenth through their accomplishments. Now, we have black doctors, lawyers, writers, producers and political figures. To the black citizen it is very important to excel in their chosen profession and in life. Juneteenth is not just a celebration of parades and dances, it's a celebration that displays the advancements of the young black Americans of today.

financial aid award. Non Texas residents will have to pay a fee of \$120 per semester hour and will probably have to resort to a Guaranteed Student Loan to remain in school.

Prairie View students should avoid the long lines in financial aid for the 1985 fall semester and make sure their financial aid is approved.

Sincerely,
A.D. James, Jr., Director
Student Financial Aid

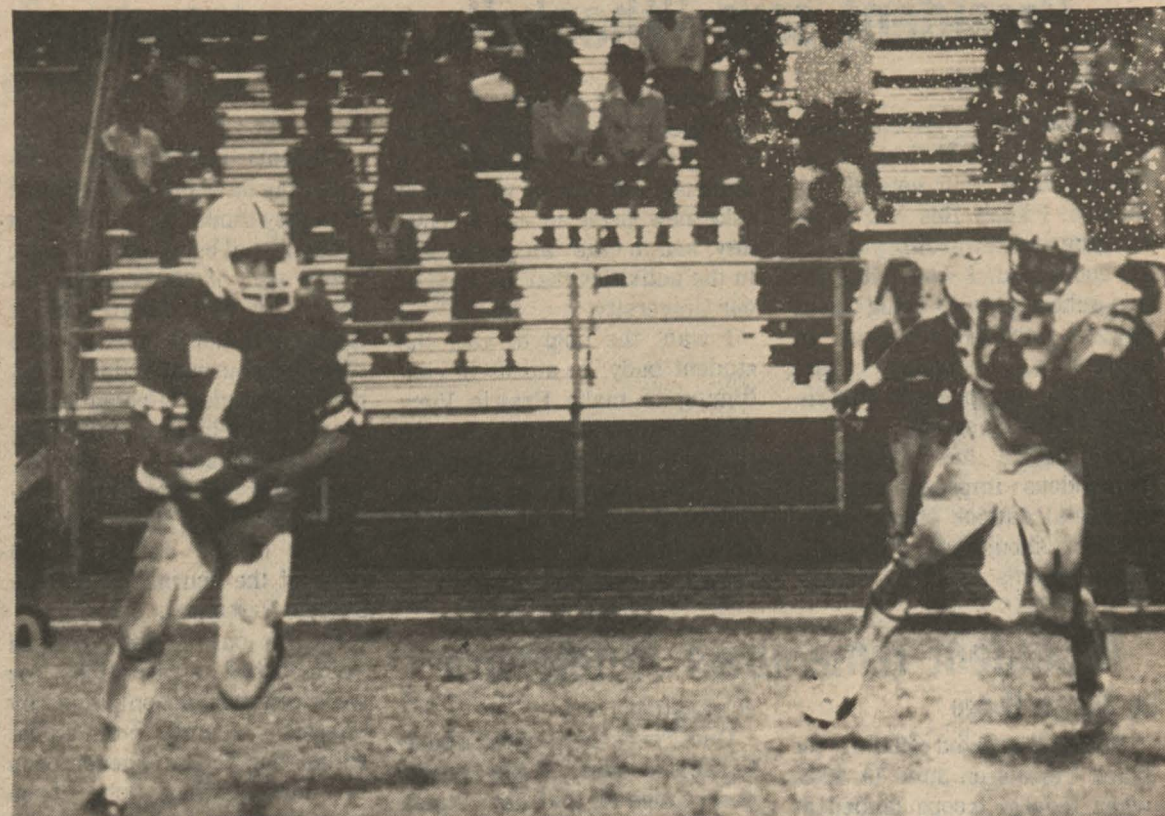
Labor Day Classic

The Prairie View A&M University Panthers and the Texas Southern University Tigers will kick-off their 1985 season in a SWAC (Southwestern Athletic Conference) confrontation Saturday August 31, in the Astro Dome. Kick-off time is set for 7:30 p.m.

To break tradition dated back to 1948, when PV and TSU teams met for the last game of their season, this will be the first time these two schools will meet for their season opener. Titled the Labor Day Classic, an array of events are being planned for the Labor Day weekend at the Astrodome complex. The intent of both schools is to make the Labor Day Classic a total family outing. Among the activities being planned are; discounts into Astroworld and Waterworld; a battle of the bands between area high schools and the respective university bands; alumni gatherings; a beauty pageant and a concert.

The Labor Day Classic will be a promotional game for both universities in their efforts to rebuild strong football programs. In the past Panther vs. Tigers games have been played at Robertson and Rice Stadiums. Student admission tickets for this event will be available for students at both universities.

Previous attendance figures from PV and TSU games totaled 119,625 in seven appearances. Athletic Directors Brutus Jackson, Prairie View, and Thurmon Robbins, Texas Southern, hope to draw an excess of 40,000 fans for the first Labor Day Classic. A two year agreement has been negotiated with the Houston Sports Association to have the game played in the Astrodome.



Panther named Academic All-American

Sports Information

Recent Prairie View A&M University graduate Robert Williams, a three year letterman in baseball, was named to the College Sports Information Directors of America's All - Academic baseball team, second team. CoSIDA announced it's Academic All - American team with Robert Williams as the only member from the Southwestern Athletic Conference (SWAC) to receive the honor this year in baseball. Williams graduated from Prairie View Cum Laude in Computer Science.

Williams, a Richfield high school graduate, Waco, Texas played varsity baseball, and basketball. An outstanding athlete since high school Williams has recently won his third conference batting title in four year, finishing the 1985 season with a .464 batting average putting him 10 points ahead of Jesse Jackson of Alcorn State University.

While being an intelligent player, Robert is also a versatile player, making All - Conference as an outfielder, second baseman, and All - Conference as a short - stop over a four year period. In 1984 Williams was second in the NCAA in triples.

Robert Williams is currently attending professional baseball tryouts with the Phillies, where former Prairie View pitcher Charles Hudson now stands on the pitchers mound. This week Williams will try out for the Montreal Expos and the White Sox. Williams future plans include pursuing his masters degree in Computer Science.

Looking For Good Used Auto Parts?

Mike's Auto Parts

- Body Parts • Engines • Starters
- Transmissions • Axle Assemblies
- Windshields • Alternators
- Batteries • Wheels • Tires

We Install What We Sell
409/826-8225

Highway 290 East • Hempstead



DALE'S DELI WELCOMES Prairie View students to the best dat-gum sandwich shop in Waller, Texas! Free medium drink with purchase and PV ID. Come give us a try

Waller Village Retail Center
FM 2920 & Hwy. 290

10-8

Jacket selected to coach at World University Games

Coach Barbara Jacket, women's track and field coach at Prairie View A&M University, recently accepted the position as head women's coach for the 1985 World University Games to be held in Kobe, Japan August 29 - September 4. Coach Jacket will also be on hand to implement team selections at the USA MOBIL Outdoor Championships in Indianapolis this month.

The 1985 track season has brought numerous honors and awards to Coach Jacket and her super Pantherettes track team. Taking a second place at the National Association of Intercollegiate Athletics (NAIA) Indoor Track competition in Kansas City wasn't good enough, so the Pantherettes brought the First Place National Championship home this month in Outdoor Track and Field from Hillsdale, Michigan.

If that wasn't enough Faculty Representative, Dr. Charles T. Edwards, and Sports Information Director, DeBorah Thigpen accepted five conference awards for Ms. Jacket at the Southwestern Athletic Conference (SWAC) sports banquet held in New Orleans earlier this month, that she was unable to attend due to the NCAA meet being held in Austin, Texas. SWAC honored coach Jacket with Indoor Coach of the year, and All - Sports Award

The Pantherettes track team won the NAIA National Championship with the participation of eight strong runners. Barbara Jacket's philosophy on winning shined through as the Pantherettes took their twelfth national championship in eleven years.

Former trackster inducted into Hall of Fame

Sports Information

Former Prairie View track star Felix Johnson was inducted into the Track & Field Hall of Fame at the 75th Drake Relays, in Des Moines, Iowa.

Felix Johnson had a pretty impressive track career at Waco, Texas Carver High School before coming to Prairie View A&M University in 1967 to run track for the Panthers. At Waco Carver High Felix won the state in the 440 yard dash with a timing of 49.1. Recruited by coach Hoover Wright to run the 440 for the Panther., coach

Wright later converted him to a 1 miler. Felix's first timing in the 880 yard clocked him at 1:54.3. In late April 1968 after a lot of coaching from Wright, Felix ran the 880 in 1:50. After that he ran a consistent 1:50 mark or better in the 880.

During his tenure at Prairie View Felix became a two time Southwestern Athletic Conference champion and record holder, an NAIA indoor champion and record holder. His greatest achievement was to tie the existing world record in the



Pictured above are the banners of America's first black newspapers. These papers paved the way for the black newspapers of today.

Look for more sports action in next month's issue of the Panther

To Be Ignored?

"WHOSOEVER SHALL GIVE TO DRINK UNTO ONE OF THESE LITTLE ONES A CUP OF COLD WATER BECAUSE HE IS A DISCIPLE, VERILY I SAY UNTO YOU, HE SHALL NO WISE LOSE HIS REWARD!"
— MATT. 11:42



CITIZENS STATE BANK



MEMBER F.D.I.C.
P. O. Box 575 Phone (409) 826-2431
HEMPSTEAD, TEXAS

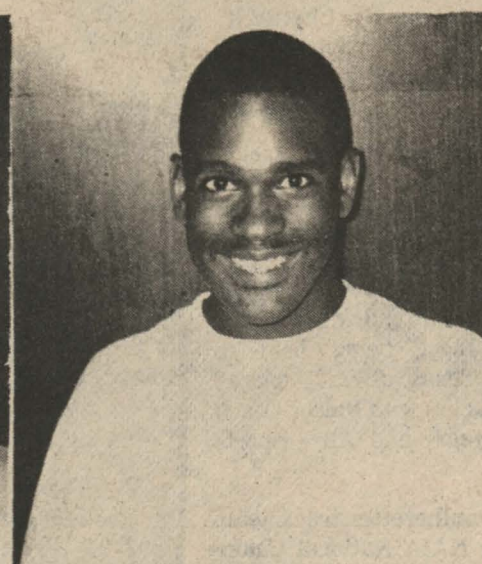
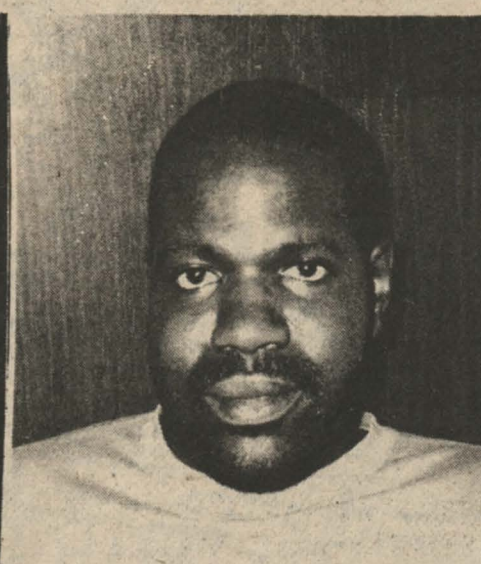
"SPECIALIST IN RURAL ELECTRIFICATION"

San Bernard Electric Cooperative, Inc.

P. O. Box 158 Bellville Texas 77418 Phone 409-865-3172
TELEPHONE 409 Waller County Office 372-9176
Bellville Office Direct 826-3668

Students: On the Yard

What does Juneteenth mean to you?



5. Kevin J. Fields: Juneteenth is a day of special celebration for all Negro Americans. It indicates the abolishing of slavery 120 years ago today. It is a day of special thanks for all of our ancestors as well as ourselves.

6. Amos K. Jones: Juneteenth is a day that will be long remembered because on this day in 1865, Texas and other states finally received their freedom.

3. Rayford Outland: Juneteenth is the celebration when Negroes remember the day that they were freed from slavery. Many don't realize nor appreciate the importance of Juneteenth.

4. Curtis Thomas: A holiday for black people in Texas, it signifies the announcement that came two years late that slavery had ended in America.

PRAIRIE VIEW A&M UNIVERSITY
EMPLOYEES FEDERAL



P. O. BOX 2606
PRAIRIE VIEW, TEXAS 77445

A Service to The Prairie View Community for Over Forty Seven Years

NOW OFFERING

- Regular Share Accounts (\$100.00 Minimum)
- Super Savings Certificate (\$2,500 Minimum)
- 30 Months Share Certificate (\$1,000 Minimum)
- 6 Months Money Market Certificate (\$10,000 Minimum)
- New Individual Retirement Account (IRA) (\$500 Minimum)

OUR MOTTO: "Not for Profit

Not for Charity

But for Service"

OFFICE HOURS: Monday thru Friday 9:00 a.m. to 6:00 p.m.
Saturdays 9:00 a.m. to 12 Noon

PHONE: 409/857-4925

409/857-4929

OFFICE LOCATION: 104 F.M. 1098

Tuition fees tripled

All said and done, Texas Governor Mark White has finally signed into law a bill which tripled tuition fees for Texas and non-Texas students beginning in September.

The Houston Post reported that the governor "reluctantly" signed the bill, but not all the students in Texas understand the message. The message reveals that there's no reason for students, especially non-Texas students to be "crying over spilt milk". The bill has been signed, nobody cares about how reluctantly it was signed.

Considering the effective date of this law, heaven will understand that it is a big burden to non-Texas students.

The majority of students don't visualize the kind of financial problem confronting them next semester. Being able to make the transition of payment by 100 percent increase sounds incredible.

Thinking about the general effects of this law, one doesn't need to be told that minority schools fall victim most often to

their majority counterparts. On the other hand, the government of Texas has set all the foreign student's on a "hot seat". It is better to "rob Peter to pay Paul" than to put thousands of helpless foreign students in Texas into financial jeopardy. It is always easy for other students to relocate, but foreign students always fall victim to any ugly situation.

By signing this bill into law, Texas government is acting more like a "Prophet of Doom." It is left for minority schools to take some strategic steps in order to maintain their heads above the water. Believe it or not, the student population of Texas minority schools is going down beginning next year. This is the biggest draw-back in education anyone can think of.

The discouragement by the government did not end with the tuition tripling. The government is planning to increase the fees more in 1986.

If I should forget my day of graduation in a Texas university, I will never forget the shock experienced through the increase of tuition fees.

By Teddy Dikas
Managing Editor

From the AP News Wire

Personal income dropped a half percent last month. But the Commerce Department says the decline in American's income followed an unusually big jump for April. The April increase -- which had originally been reported as six-tenths of a percent -- was revised upward to a full percent. Several factors are cited as contributing to the unusually large increase for April. Tax refund checks. Subsidy payments to farmers and a retroactive pay hike for postal workers.

Despite the May drop in income, personal consumption spending increased seven-tenths of a percent for the month. And that's after the April spending figure was also revised upward -- from seven-tenths of a percent to a full percent.

.....

Ted Turner has filed documents with the Federal Communications Commission and the Securities and Exchange Commission giving more details of his bid to take over C-B-S' claim that the unwelcome suitor will have to greatly reduce network expenses and suffer a drop in ratings and revenues. Turner Broadcasting System projects positive cash flow for the first three years of operations of a combined C-B-S-T-B-S. Turner proposes to sell off C-B-S' owned and operated radio stations. One T-V station and its Non-Broadcast properties -- the biggest of which is C-B-S records. T-B-S claims that will lead to a "Cash Surplus" of two (B) billion dollars just two years after taking control of C-B-S.

UNCO SHOPPING CENTER

FM 19 1098 PV

EXPRESS DRY
CLEANERS

WATCH FOR WEEKLY SPECIALS!!

Wash & Fold 49¢/lb.

20% off all laundry

and dry cleaning

OPEN 9:00 a.m.-6:00 p.m.

"Please...DON'T DRIVE DRUNK"



WORDS TO LIVE BY

A message from this newspaper and the Troopers of the Texas Department of Public Safety

Good Luck Miss Prairie View in Your Quest for the Miss Texas Title



Miss Prairie View Lillie Taylor

From p. 7

You say T - V has to little literature. And too much punching and private eyes? You're tired of cops and detectives?

Well. A - B - C's doing something about it. It's scheduled a new detective show.

However. The detective will drop quotes from literature. Robert Ulrich will be a Boston - based private eye named Spenser. The series is based on best - selling novels by Robert Parker. Who's a former college professor. The character is named after Elizabethan Poet Edmund Spenser. The series will be on Fridays.

Singers B.B. King and Kris Kristofferson joined former heavyweight champion Muhammad Ali in a parade this month in Jackson, Mississippi to honor slain civil rights leader Medgar Evers. An and Ali and Kristofferson the co - marshals. The Medgar Evers homecoming will also feature country singer Charlie Rich.

Philadelphia - born comedians Bill Cosby and David Brenner will headline a benefit concert in their hometown July Second. Money from the show will go to 270 people left homeless by the fire that wiped out a neighborhood when police tried to evict members of the radical group "MOVE."

(Teachers Testing)

(AUSTIN) - Texas teachers and administrators must pass an examination next spring if they want to retain their teaching certificates. The state board of education has cleared the way for a reading and writing test for all Texas teachers. Teachers or school administrators who fail the test in March will be able to take it over the last week in June. But board members sidestepped votes on school discipline and social promotions until at least July. Seperate bills to clamp down on misbehavior and crime in public schools passed the Senate and House. But the two houses were never able to reach final agreement.