

Prairie View A&M University

Digital Commons @PVAMU

---

PV Panther Newspapers

Publications

---

11-11-1980

## Panther - November 1980- Vol. LV, NO. 5

Prairie View A&M University

Follow this and additional works at: <https://digitalcommons.pvamu.edu/pv-panther-newspapers>

---

### Recommended Citation

Prairie View A&M University. (1980). Panther - November 1980- Vol. LV, NO. 5., *Vol. LV, NO. 5* Retrieved from <https://digitalcommons.pvamu.edu/pv-panther-newspapers/233>

This Book is brought to you for free and open access by the Publications at Digital Commons @PVAMU. It has been accepted for inclusion in PV Panther Newspapers by an authorized administrator of Digital Commons @PVAMU. For more information, please contact [hvkoshy@pvamu.edu](mailto:hvkoshy@pvamu.edu).



# Welcome Home: Alumni, Friends

**P  
V  
A  
M**

The **PANTHER**

**PRAIRIE VIEW A&M**

**UNIVERSITY**

**PRAIRIE VIEW, TEXAS**

Volume 55  
Number 5

November 6-11,  
1980



**MISS PV CORONATION** — In the spotlight Tuesday evening were Miss PV, Natalie McKinney (center) and members of her court: Carolyn Miller (left) and Pamela Shorter. Queens of campus organizations also participated.



**Artye Meka Henry Huckaby**  
1930



**Jean Harris Brooks**  
1945



**Bennie Jewel Douglas Young**  
1955



**Mary Washington Wilson**  
1975

## Meet the Homecoming Queens

The Miss Homecoming Committee has announced the names of four alumnae selected to represent the reunion-year classes during Homecoming '80. These charming ladies are:

Mrs. Arthy Meka Henry Huckaby, Class of 1930, who will return to the campus representing this year's Golden Anniversary Class. She was an

### Book Review Features Work By James Baldwin

Century Two's Homecoming Book Review featured the title "Just Above My Head" by James Baldwin and was reviewed by Mrs. Denise Carreathers Armstrong.

the event, one of a monthly series, was held in the President's Campus Residence on Wednesday evening, November 5.

honor graduate in English and Music. Mrs. Huckaby holds the Master's degree in English from Texas Southern University and has done advanced study in music at Boston University. The mother of two sons, Dr. Melvin Huckaby, an oral surgeon, and Dr. Henry Huckaby, a plastic surgeon, Mrs. Huckaby taught for thirty-nine years in the Houston Independent School District.

Representing the Class of 1945 in Mrs. Jean Harris Brooks who reigned as Miss Prairie View in her senior year on campus. Mrs. Brooks holds a Master's degree in Elementary Education from Texas Southern University and has done graduate work at the University of Houston. She serves as the Title I Program Coordinator at Burnet Elementary School in Houston. Mrs. Brooks and her husband

George reside in Houston where she is active in several professional organizations.

Mrs. Bennie Jewel Douglass Young, selected from the Class of 1955, majored in music and was voted Miss Prairie View in 1955. She has a Master's degree and has done advanced study at the University of Illinois. The mother of two children, Mrs. Young is a librarian in Houston.

Mrs. Mary Washington Wilson, Miss Prairie View in 1975, will return to represent the Class of 1975. While at Prairie View, she was a member of several honor societies and campus organizations. An honor graduate, Mary is married to Mr. Jackie Wilson, Prairie View Class of '74. She lives in Houston where she is a Multi-Line Examiner with Allstate Insurance and a beauty consultant for a local cosmetics firm.

## For Faculty-Staff Board Approves Merit Salary Increases

The Texas A&M University System Board of Regents, responding to institutional requests for greater salary support to meet competition, Friday approved reappropriations totaling more than \$1.3 million for merit increases during the current fiscal year.

Texas A&M University officials were authorized to reappropriate \$1 million to strengthen the institution's "ability to retain highly productive faculty and staff in light of high salary offers being made by business and industry, as well as by other major universities," noted TAMUS Chancellor Frank W. R. Hubert.

Prairie View A&M University and Tarleton State University, both of which have considerably fewer personnel, were authorized reappropriations of \$165,000 and \$95,000, respectively, and \$125,000 was made available for system offices for similar purposes.

Chancellor Hubert said the fourth TAMUS academic unit, Texas A&M University at Galveston (Moody College), has funds which can be utilized for merit salary increases without Board of Regents action.

The chancellor pointed out that in the past unencumbered funds, such as those to now be used for merit increases, were normally reappropriated near the end of the fiscal year for such activities as maintenance. "This year we recommend that they be made available for catch-up salary purposes to reward our most deserving faculty and staff," Dr. Hubert noted.

### PIGSKIN REVUE Friday, Nov. 7

9:00 p.m. - 2:30 a.m.  
Featuring  
"The Family Band"  
"Bitter Sweet  
Connections"  
"New Day Band"  
Field House

## Homecoming — 1980 Activities in Progress

Homecoming 1980 is being celebrated at Prairie View A&M throughout the week of November 3 through 9. The Homecoming theme is "PVAMU: Pathway To Success."

The annual homecoming celebration is a meaningful tradition. It is a time to reflect on the past, and to show appreciation for present achievements and plan for a positive future at the University.

Highlights of the week's

activities include the success seminars sponsored by academic departments, exhibits, demonstrations, the homecoming parade, football game and religious activities.

Alumni Association activities will be held on Friday, Saturday and Sunday. Reunion classes include those ending in "0" and "5".

The Annual coronation of Miss Prairie View was held Tuesday evening November 4 and included scored of campus queens and student organization leaders.

### PV Grad-'53

## Hollywood Actor to Give Homecoming Address

J. Christopher Sullivan, star of stage and screen productions, will deliver the Homecoming Convocation address on November 6, 1980, at 10:00 a.m. in the Fieldhouse.

Mr. Sullivan graduated from Prairie View A&M University in May, 1953. While a student at Prairie View, he was active in many extra-curricular activities, including debate, drama, the student press and the college choir. He also served as student body president.

After graduation Mr. Sullivan served in the military, taught in several Texas high schools, and was an associate Professor of Speech and Communications at the University of Texas.

Pursuing his interest in drama, he moved to Hollywood where he has appeared in several stage productions, including Purlie Victorious, Emperor Jones, Wuthering Heights, and Julius Ceasar. Additionally, Mr. Sullivan has appeared in the Venetian

Affair and The Lost Man on the silver screen. His television appearances have included Password, Serpico, and The White shadow.

While here, Mr. Sullivan will participate in a seminar and a workshop with the staff and students in the Department of Drama on Friday, November 7, 1980.



**J. Christopher Sullivan**  
Homecoming Convocation  
Speaker

## SCHEDULE OF HOMECOMING ACTIVITIES

### NOV.

- 4 "Miss Prairie View Coronation," University Field House, 7:30 p.m.
- 5 Book Review, "Just Above My Head," By: James Baldwin; Reviewed by: Mrs. Denise Carreathers Armstrong, President's Campus Home, 7:30 p.m.
- 5 "Alumni/Faculty Basketball Game" (Admission Free), 7:30 p.m., University Field House
- 6 "Golden Anniversary Convocation," Class of 1930, 10:00 a.m., University Field House
- 6 Faculty Talent Show, Women's Gym, 8:00 p.m.
- 7 Mock Trial, front lawn of MSU building, 3:30 p.m.
- 7 Pep Rally, University Field House, 7:30 p.m.
- 7 Reception, "Miss Homecoming," Alumni Hall, 7:30 p.m.
- 7 Bon Fire, South area of University Field House, 8:30 p.m.
- 7 Pig Skin Review, University Field House, 9:00 p.m.
- 8 Alumni Dance, Newman Center, 2:00 a.m., \$8.00 per person
- 8 Alumni Breakfast, Coffee Shoppe, 7:00 a.m.
- 8 "Homecoming Parade," 10:00 a.m., Prairie View, Texas
- 8 "Homecoming Football Game," Blackshear Field, 1:30 p.m., "Prairie View vs. University of Arkansas at Pine Bluff"
- 8 Dance, Women's Gym, 8:00 p.m.
- 9 "Greek Success Seminar," MSU Auditorium, 3:00 p.m.





**RADIO STATION PLANNING** — Officials of Lake Huron Broadcasting, Robert M. Chandler (right) executive vice president, and Mike Krehel, director of technical operations spent a full day on campus assisting with planning and preparations for the installation of Radio Station KPVU this Fall. President A. I. Thomas shown with I. V. Nelson, Samuel E. Brown, Ms. Shirley Staples and Luther Francis discuss location of facilities with consultants.

**Famous KC Steak House** STEAKS • CHICKEN

Steaks - Seafood — Chicken  
Home Cooked Meals  
Featuring Fresh Baked Bread,  
Homemade Cakes and Pies

742 10th Street Highway 290      826-2464  
Hempstead, Texas

**Voter Education Programming Sponsored By Alphas**

Dr. J. Don Boney, Jr. Director of Shape Community Center, Houston, was the principal speaker at a Voter Education Program held at Prairie View A&M on October 21.

Sponsored by Eta Gamma Chapter of Alpha Phi Alpha Fraternity the theme of the program was "Vote — It is worth the bother!"

**ENGINEERING & COMPUTER SCIENCE GRADUATES**

If your imagination extends beyond the usual limits...

There's a place for you at Lockheed on the beautiful San Francisco Peninsula, because imaginations like yours have been the guiding force at Lockheed since our beginning. At that time, we were pioneers in the missile field. Today, Lockheed is involved in a spectrum of scientific and technological programs you won't find anywhere else. We're involved in meaningful programs in such diverse areas as ocean systems, space systems, energy and environmental systems, remotely piloted vehicles, and information systems.

We're located in one of the most beautiful areas in the nation — Sunnyvale, California, where year 'round pleasant weather, great outdoor activities, and the cosmopolitan lifestyle of San Francisco and San Jose are just short drives away. The benefits are great, the career growth opportunities even greater. Sound interesting? If so, then investigate the exciting opportunities available now for **COMPUTER SCIENCE & ENGINEERING GRADUATES (Aeronautical\* Electrical\* Mechanical).**

**Our representative will be on campus Tuesday, November 18**

If unable to contact our representative, please forward your inquiry to College Recruiting Manager, P.O. Box 504, Sunnyvale, CA 94086. We are an equal opportunity affirmative action employer.  
U.S. Citizenship is required.

**At Lockheed, technical excellence is a way of life.**

**LOCKHEED**  
MISSILES & SPACE COMPANY, INC.

**Texas Comptroller's Office Holds Campus Interviews**

**Tax Auditors Sought**

Representatives of the Comptroller of Public Accounts were on the Prairie View A&M University campus last week to interview senior students interested in careers as tax auditors.

State Comptroller Bob Bullick said recruiters were interviewing December graduates with accounting majors for job opportunities in the agency offices in Dallas and Houston as well as some 12 other field offices.

Interviews at Prairie View A&M University were held between 9:00 a.m. and 4:00 p.m. on Tuesday, October 28, at the Placement Office.

The Comptroller is Texas' chief revenue officer and is responsible for the efficient and fair collection of state taxes as well as payment of the state's debts and financial practices and management.

College and university graduates with a minimum of 24 hours in accounting, including six hours of intermediate accounting, three hours of advanced accounting and three hours of auditing are encouraged to make interview appointments.

State tax auditors examine taxpayer records to determine compliance with statutes. Auditors also analyze and compile information collected during audits and assist taxpayers on tax matters.

Salaries range from \$14,100 to \$16,100 a year depending on location assignment and some travel is involved.

Further information may be obtained by calling the Placement Office at 857-2120.

**PV's Oldest Grad Honored**

Mrs. Louise Crawford Price, oldest living graduate of Prairie View University of Prairie View, Texas, was guest of honor at brunch Sunday at the Lobster House by alumnae of Blackshear High School, Taylor, Texas and Prairie View A. and M. University.



**Mrs. Louise Crawford Price Class of 1909**

Sharing honors were her two daughters, Mrs. Iris Carr, Washington, D. C. and Mrs. Jewell Price McKinze, Dallas, Texas.

Mrs. Price, who is 93, graduated from Prairie View in 1909 and married her college sweetheart, Oliver Lewis Price, after graduation. She immediately began her teaching career which ended upon her retirement in 1954. She taught in Taylor, Texas for more than thirty years as first grade teacher. In 1978, she was honored by Prairie View in a special tribute for her outstanding service as a teacher and mother.

Speaking for the sponsors, James T. (Doc) Earl, Los Angeles and C. Raymond Merriwether said, "We are indeed grateful and pleased to honor one who has played a major role in preparing us for the challenges of life."

"What we are and what we hope to be we owe a debt of

gratitude to Mrs. Price, our second mother, for her inspiration and guidance during our formative years."

In her response Mrs. Price said, "I am pleased and happy to see each of you and to know you are making significant contributions in the community."

Attending the brunch were: Mr. and Mrs. Wellington Bradford, Joe Williams, Ms. Charles Etta Dillard, Ms. Alpha White, Ms. Daisy M. Foster, Mrs. Dorothy M. Jackson, Mrs. Katie D. Johnson.

Also Mrs. Alice Earl, Mrs. See **OLDEST GRAD, Page 4**

**Region's Economic Development Program Gets National Recognition**

H-GAC's Economic Development Program has been nominated as one of the most exemplary regional programs of its kind in the nation.

The H-GAC program, which is funded by the U. S. Department of Labor and the U. S. Department of Housing and Urban Development, is one of only 21 programs nominated by the Labor Department from around the country for highlighting.

The Houston - Galveston Area Council is this region's voluntary association of 122 local governments which promotes regional cooperation through comprehensive planning and services to local government in the counties of Austin, Brazoria, Chambers, Colorado, Fort Bend, Galveston, Harris, Liberty, Matagorda, Montgomery, Walker, Waller, and Wharton.

**MECHANICAL ENGINEERING GRADS**

**Three Big Reasons Why You Should Interview with Mitchell Energy & Development Corporation...**

1. We have increased the size of our Exploration and Production Departments which means more opportunities for you—  
*We're one of the largest independent oil and gas exploration and production companies.*
2. Our Geologists and Engineers are successful in their projects and rewarded accordingly—  
*Last year, we drilled or participated in over 218 wells with a success ratio of 78% and now have over 1900 producing wells.*
3. You have a healthy budget with which to work—  
*We have increased our capital budget to \$344 million.*

Career opportunities exist in the greater Dallas area or The Woodlands (Houston area).

To find out more reasons why you should speak to us, see our Recruiter on your campus:

**Tuesday, November 18th**

**MITCHELL ENERGY & DEVELOPMENT CORP.**  
2001 Timberloch Place  
The Woodlands, Texas 77380  
An Equal Opportunity employer, M/F

**Texas A&M System**

**Conference Planned for Academic Units to Spotlight Top Teaching**

The art of teaching and administrative approaches and strategies to facilitate and encourage superior teaching will be spotlighted here in a two-day conference for faculty and staff from all four academic units of The Texas A&M University System.

Chancellor Frank W. R. Hubert, who initiated the concept for the unprecedented session now set for January 8-9, said the general topic will be "quality in teaching."

In emphasizing the teaching function, Dr. Hubert pointed out that TAMUS institutions — Texas A&M University, Prairie View A&M University, Tarleton State University and Texas A&M University at Galveston (Moody College) — combine to have 43,125 students and approximately 2,500 faculty engaged in some 1.2 million semester credit hours at the present time.

"That's a major endeavor, and we simply cannot overemphasize the importance of the teaching function to the students of the four academic

institutions," the chancellor observed.

In addition to spotlighting the teaching function generally, Dr. Hubert said conference objectives will include attempts to move forward in meaningful evaluation of teaching, establish better procedures for teacher support services and create a better reward system for effective teaching.

What the conference will not be, the chancellor stressed, is a "cosmetic" activity prompting interest with only a short life span.

"We see this conference as the start of a continuing program to improve teaching and thereby the education of the student, both undergraduate and graduate, throughout the Texas A&M University System," he said.

Dr. Hubert added the conference will not include debates involving relationships between teaching and research or teaching and public service relationships, nor will it involve any attempts to standardize teaching or teacher

evaluation systems for TAMUS academic units.

More than 200 professors and administrators, including representatives of all academic departments within the four institutions, are expected to participate in the conference.

Top academic and administrative officials from each campus, including three of the four presidents, participated in the planning session at which concepts for the conference were finalized.

The first electric welding plant in Texas began operation at Galveston in 1916 at the Kane Boiler Works.



**HEALTH AND MEDICAL SERVICES** — Representatives of UT System Cancer Center discuss cooperative programs and services with selected staff members.

**Canterbury Association**  
Prairie View A&M University

**Fellowship — Discussion — Service**  
for  
**University Students, Faculty, and Staff**

associated with The Episcopal Church, The Church of England, The Anglican Church of the Bahamas, The Anglican Church in Africa, and the world-wide Anglican Communion

Meetings on Tuesdays, 7:00 p.m. at St. Francis of Assisi Episcopal Church Waller Street, Prairie View (located south of University Campus, behind Hobart Taylor Hall)

**Father Jim Sproat, Vicar**  
857-3272 and 857-3590

**PEOPLES CLEANERS**

DRY CLEANING, ALTERATIONS, LAUNDRY SERVICE AND LEATHER CLEANING

826-3847 — Day or Night  
P. O. Box 136  
Hempstead, Texas

**1 - 2 HOUR CLEANING SERVICE**

**WARD'S PHARMACY**

"Your Rexall Store"

SENIOR CITIZEN DISCOUNT  
AVAILABLE ON PRESCRIPTIONS

Telephone 826-2445      Nights 826-6920  
Hempstead, Texas

**Imagine yourself in the job of your choice...then ask for it.**

**That's what Burnell Thomas did.**

"I started in software at Hughes, but found I would rather be in hardware, designing the individual components of a system and seeing it all come together. So I asked for a transfer and now I'm developing test procedures for a unit I helped build — a reference generator for a satellite."

**Imagine yourself studying for your M.A. or Ph.D. — and Hughes paying for it.**

"One company I spoke with told me I would have to be with them a year before they would send me back to school. When I asked about graduate study at Hughes, they handed me an application for their fellowship program. Now I'm in the Master's program at U.S.C. and they're paying my way."

And if you would like to continue your education without returning to school, ask about our in-plant, graduate equivalent courses.

Tell us what you imagine yourself doing and we'll tell you where at Hughes you can do it.

**At Hughes, your future is limited only by your imagination.**

**HUGHES**  
HUGHES AIRCRAFT COMPANY  
Proof of U.S. Citizenship Required  
Equal Opportunity Employer

Hughes Aircraft Company, P.O. Box 90515, Los Angeles, CA 90055



### The Sophomore Class Presents

On October 21, Mr. and Miss Sophomore contest was held. Several people vied for the coveted award, unfortunately there could be only one winner per title. The contest was a terse one but when the results came in, Mr. Lawrence Pace and Miss Reta McCutcheon were the winners.

Reta McCutcheon was born in Roswell, New Mexico. She moved to Houston where she graduated from Aldine Senior High. She is currently majoring in Business Administration and plans to graduate in May of '83.

Lawrence Pace is a native of Houston, Texas. He graduated from Booker T. Washington Senior High and is an

Electrical Engineering major looking forward to May of '83. Mr. Pace is also a member of the National Society of Pershing Rifles and AROTC Drill Team. In addition he is a member of I. E. E. E. and The Baptist Student Movement.

The first place runner ups were Miss Delvis Burroughs and Mr. Hubert Stram. Delvie Burroughs is from Fort Lauderdale, Florida. She is majoring in Accounting. Mr. Stram was unavailable for comment.

The Sophomore Class is proud to be represented by these fine young ladies and gentlemen. We wish them the best in the years to come.

By Daniel Hatchett



PLANNING NEW SERVICES — Houston business leader Bob Chandler (center) poses with key academic heads following planning sessions for KPVC Radio Station. Pictured are (L-R): Dr. J. Thomas, Ms. Shirley Staples, Mr. Chandler; Dr. Bernice Rollins, Dr. S. R. Cullins and Dean A. E. Greau.

### College Degree Requirements Are Getting Stiffer

State and land-grant universities are taking a hard new look at general degree requirements and, as a result, are stiffening undergraduate curricula. The changes are designed to strengthen fundamental students skills in English and quantitative reasoning and to broaden knowledge of the sciences, the humanities, and the social sciences. They are also meant to ensure that all graduates can think more independently and critically.

The swing today is away from the early '70's trend of fewer requirements and more options. And, say some faculty members, tougher requirements at the university level may mean the nation's high schools will have to follow suit.

Gerald Bauldock, Chemical Engr., Rohm & Haas Company, Bristol, PA 19007, (215) 785-8733 & 785-7536  
 NOVEMBER 12-13  
 Wilford S. Stewart, Sr. Development Chemist, Celanese Fiber Co., P. O. Box 1414, Charlotte, NC 28232, (704) 554-3113  
 DECEMBER 10-11  
 Harvey M. Pickrum, Ph.D., Staff Biologist, Proctor & Gamble Co., P. O. Box 39175, Cincinnati, OH 45247, (513) 977-2641

### Lionel Lofton: Watercolor Exhibit



The Department of Art is proud to present a senior exhibition by artist Lionel Lofton, which will be on display in W. R. Banks Library, Prairie View A&M University, November 10-21, 1980.

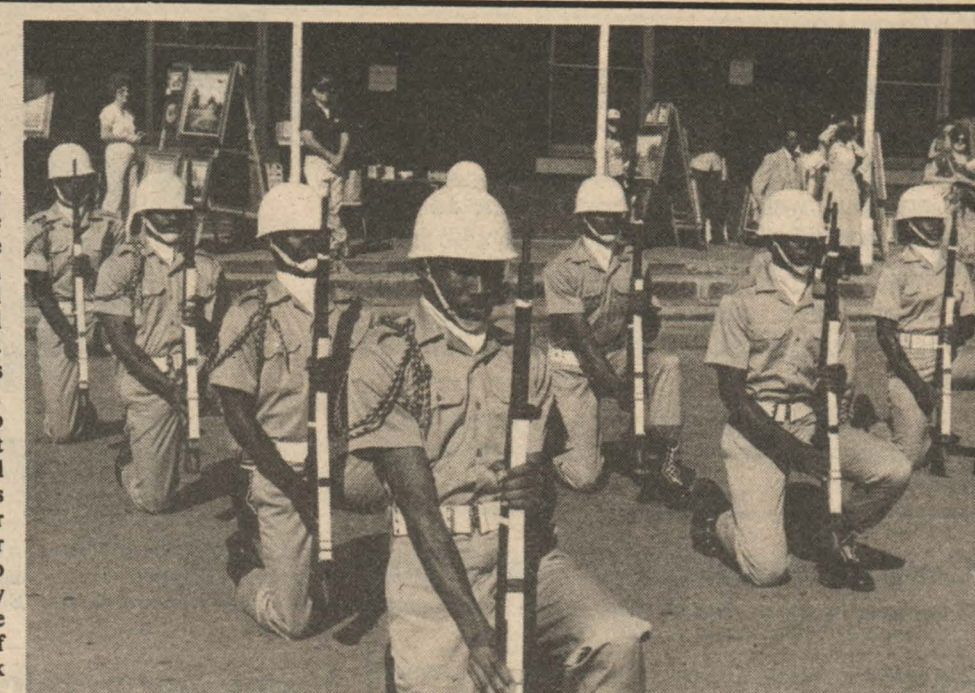
Mr. Lofton's exhibit will consist of a series of recent watercolors reflecting an intensive study of the southern landscapes. He has focused his interest on a particular subject in the landscape — "The Barn", and has used his uncanny ability to portray the barn in a variety of compositional arrangements from realistic to abstract.

Mr. Lofton is a senior art education major looking forward to a December graduation. Presently, he is student teaching at Longfellow Elementary in Houston, Texas.

Mr. Lofton stated "so far my student teaching experience has been challenging as well as rewarding because I enjoy working with young people." When asked what were his plans after graduating he smiled and said, "I would like to pursue a Masters degree in Art and teach for a while."

Mr. Lofton's success as an artist has come through his diligence and hard work. And I am proud to have had the opportunity to contribute to Lionel's artistic growth. (Clarence Talley)

### Ring My Bell



ARMY ROTC DRILL TEAM at Waller County Museum at Brookshire, October 1.

### Introducing... BEEP Visiting Professors

Clyde Jupiter is the Program Manager of Waster Management Research for the U. S. Nuclear Regulatory Commission. He is responsible for formulating waster management research projects whose results are used by the agency. He is also responsible for the licensing and regulation of nuclear waste facilities.

A graduate of Xavier University, Mr. Jupiter has a B. A. in Physics and also holds

a M. S. in Physics from Notre Dame University. Mr. Jupiter holds membership to the American Nuclear Society, NAACP, Alpha Phi Alpha Fraternity, and the Xavier Alumni Association. Born in New Orleans, Louisiana, Mr. Jupiter now resides in Silver Springs, Maryland. Gerald Bauldock is a Chemical Engineer for the Rohm and Haas Company. He

is involved in working out a new technique in screening applications of Ion Exchange Resins. Mr. Bauldock is also working on scaling up these new processes in Ion Exchange. In the one year that he has been with the company he has worked in two different departments; Development engineering doing plant work and Chemical Process Engineering doing research. A graduate of Budknell

University, Mr. Bauldock has a B. S. in Chemical Engineering. Mr. Bauldock is a member of Big Brothers of Bucks County, Philadelphia Regional Introduction for Minority Engineers and American Institute of Chemical Engineers. Born in Trenton, New Jersey, Mr. Bauldock now resides in Levittown, Pennsylvania.

In the capacity of Senior Development Chemist, Dr. Stewart is responsible for the research and development involving the company's synthetic smoking material, cytel. His duties also include cytel raw material, quality control and investigations into new generations of cytel.

Dr. Stewart's previous experience within the oil industry led him into the research and development of composites, fiber reinforced plastics, metals and ceramics and carbon composites. A native of York, South Carolina, Dr. Stewart received a B. S. degree in Chemistry from South Carolina State College in Columbia. He obtained a master's degree in Organic Chemistry from Howard University, as well as a Ph.D. in Physical Organic Chemistry.

Stewart is a member of the American Chemical Society, the National organization of Black Chemists & Chemical Engineers, and Omega Psi Phi Fraternity. He has published over 15 articles and various journals. among the publications was a presentation on the Prevention and Control of Oil Spills and Oil Pollution.

Dr. Harvey Pickrum is a Staff Biologist for Proctor & Gamble. He works as a Microbiologist in the research and development of new processes in health care. These areas include food Safety, Sterilization and Preservation. Dr. Pickrum is also responsible for directing the lab bench in the execution of pilot plant projects and activities.

Dr. Pickrum spent his entire scholastic development period at Ohio State, where he received a B.S., M.S. and Ph.D. in Microbiology.

He is a member of the Institute of Food Technologists, American Society of Microbiology and the National Technical Association. Born in Springfield, Ohio,

### Schedule of Speakers

OCTOBER 15-16  
 Nelson Williams, Exploration Dept., EXXON, USA, P. O. Box 2180, Houston, TX 77001, (713) 656-4185  
 OCTOBER 22-23  
 Clyde Jupiter, Program Manager, Waste Management Research, U. S. Nuclear Regulatory Commission, Mail Station 1130 55, Washington, DC 20555, (301) 427-4356  
 OCTOBER 29-30  
 Clarence R. Kregg, Analytical Chem.

Dr. Pickrum now resides in Cincinnati, Ohio.



### ENGINEERS

**Q:** Where do you find one of the world's largest energy, research and development centers with career opportunities allowing you to get involved?

**A:** In IDAHO, at EG&G...where your career will have enormous room to grow.

EG&G is the operating contractor for the Department of Energy's vast Idaho National Engineering Laboratory (INEL). The INEL covers about 900 square miles and employs some 7,000 people of whom roughly 4,000 hold degrees. If your career plans include contributing to the development of alternative energy, EG&G Idaho, Inc. offers you a unique opportunity.

TECHNICAL EMPLOYMENT (CR)  
 P. O. Box 1625, Idaho Falls, Idaho 83401  
 We are an Equal Opportunity Employer M/F/H

CAMPUS INTERVIEWS  
 Friday, November 14th  
 PLACEMENT OFFICE  
 Mr. J. Perryman

**EG&G** Idaho, Inc.  
 P. O. Box 1625, Idaho Falls, Idaho 83401

### Alphas Launch Credit Card Program

Have you ever been asked "Charge or Cash" by the cashier at one of your major department stores? If you are like most people, we are sure, sometimes you would have rather charged it than paid cash but you did not have a credit card. Have you ever tried to cash a check and the clerk asked for two credit cards and a driver's license for identification but all you had was a driver's license? Sometimes it can be annoying because time is wasted while the clerk does the routine credit check and sometimes you are glad because you probably would have bought items you did not really need. In any event, this is a growing phenomenon of the Credit World and we have to live with it.

For those persons who do not have a Credit Card, the Brothers of Eta Gamma Chapter of Alpha Phi Alpha Fraternity, Inc. are currently sponsoring a "Sears College Credit Card Program" at Prairie View A&M University. The program, which is a permanent project of the chapter, was officially launched at the University during the

month of October. The program is an arm of the College Credit Card Corporation, an affiliate of Campus Dimensions of Philadelphia, Pennsylvania. Campus Dimensions is a marketing research firm which selects student organizations as representatives of the company on the various college campuses to assist them in their research efforts. However, the Chapter does not guarantee that all applications submitted will be accepted.

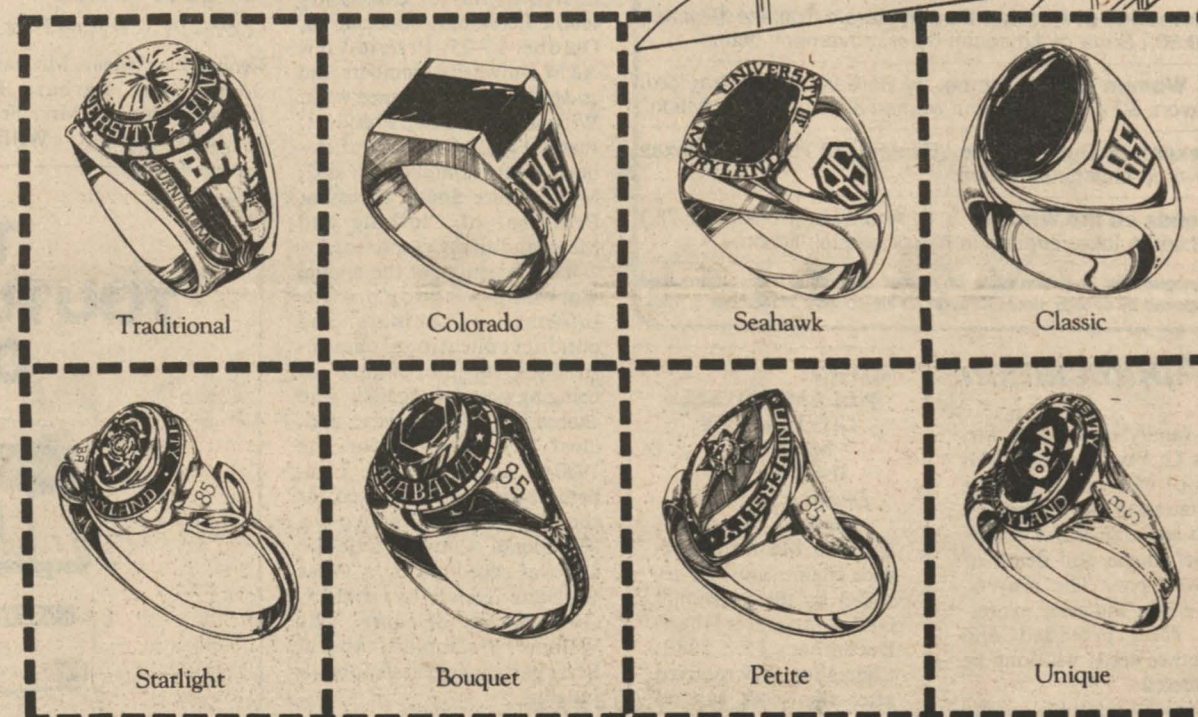
The sponsorship of this program is another effort of the Eta Gamma Chapter to make positive contributions to the Personal/Social component of the University's Operation Success Program. This Credit Card Program will assist students in establishing personal credit while they are in college. Special provisions have been made with the Sears Corporation to provide this program for Juniors, Seniors, and Graduate Students, and Faculty and Staff members at the University and the Chapter encourages persons of these groups to take part in this program.

See CREDIT CARD, Page 4-A

Don't Miss  
 THE FIRST ANNUAL  
**FACULTY TALENT SHOW**  
 THURSDAY, NOVEMBER 6, 1980  
 7:30 p.m.

Hobart Taylor Recital Hall  
 Admission: 50c Students, \$1.00 General Public

# Cut Class



## Mon.-Tues., Nov. 10-11

Pick your favorite ArtCarved class ring. Cut it out. Keep it with you for a while. Get an idea what it's like to own the ring that says, "I did it!"

Then, next week, have the genuine article fitted by the ArtCarved representative visiting campus. For one week only, you'll have our newest selection of ring styles to choose from — and a specialist who will make sure the fit is perfect. Plus, there will be some incredible ArtCarved offers to cut the cost of your class ring...

CUT your ties with the past during our "Great Ring Exchange!" Trading your old 10K gold high school ring for a new ArtCarved college ring could save you as much as \$90.

CUT the cost of a traditional or contemporary Siladium ring to just \$74.95 — a special ArtCarved "Ring Week" discount up to \$20.

CUT a smashing figure with a women's class ring from our exciting new "Designer Diamond Collection."

Any way you cut it, next week is the best week to select your ArtCarved class ring!



**EXCHANGE STORE** Monday-Tuesday, **Bookstore** November 10-11

Deposit required. MasterCard or VISA accepted.

© ArtCarved College Rings

## EXCHANGE STORE BULLETIN

New For Homecoming!  
**SPECIAL**  
 Hot & Cold Clear Glass Decanter Mugs  
 w/"Pride Will Change The Tide"  
**Sale Price \$1.50**

**ALSO AVAILABLE**  
 Prairie View A&M University Wind Breakers  
 Available in: Black, Blue, Gold, Red  
**On Sale For \$9.95**

**PRAIRIE VIEW SOUVENIRS:**  
 COASTERS RULERS ASH TRAYS  
 WALL PLAQUES P. V. T-SHIRTS  
**JEWELRY**  
 ZODIAC NECKLACES GOLD FILLED CHAINS

We will be closed Saturday morning, November 8, 1980  
 Open 1:00 p.m.  
 Sale will last through November 30, 1980

**BUSINESS HOURS:**  
 8:00 a.m. to 12:00 Midnight — Monday-Friday  
 8:00 a.m. to 8:00 p.m. Saturday, CLOSED SUNDAYS



Welcome:

**Alumni and Friends**

President A. I. Thomas, members of the Faculty, Staff and Student body extend a warm and gracious welcome to the Alumni, former students and friends of the University who have returned to the campus for Homecoming, 1980.

There are many activities planned throughout the Week for your interest and enjoyment.

We sincerely hope you will have a very pleasant and memorable return to "Dear Old Prairie View."



COMMUNICATIONS TALK — Houston Radio Executive Bob Chandler (right) discusses planning for KPVV Radio with students Jeffery Bourgeois and Vanessa Brown during a recent visit.

**Campus Paperback Bestsellers**

1. **Shogun**, by James Clavell. (Dell, \$3.50.) Englishman's adventures in 16th-century Japan: fiction.
2. **Sophie's Choice**, by William Styron. (Bantam, \$3.50.) Star-crossed lovers and the nature of evil: fiction.
3. **Still Life with Woodpecker**, by Tom Robbins. (Bantam, \$6.95.) A sort of a love story: fiction.
4. **The Dead Zone**, by Stephen King. (NAL/Signet, \$3.50.) Terror tale of a man who sees into the future: fiction.
5. **Godel, Escher, Bach**, by Douglas R. Hofstadter. (Vintage, \$8.95.) Computer scientist's theory of reality.
6. **Shibumi**, by Trevanian. (Ballantine, \$2.95.) Intrigues of the perfect assassin and perfect love: fiction.
7. **Memories of Another Day**, by Harold Robbins. (Pocket, \$3.50.) Saga of American labor movement: fiction.
8. **A Woman of Substance**, by Barbara Taylor Bradford. (Avon, \$2.95.) Successful woman & her children: fiction.
9. **Texas!**, by Dana F. Ross. (Bantam, \$2.75.) Life in Texas prior to statehood: fiction.
10. **Petals on the Wind**, by V. C. Andrews. (Pocket, \$2.75.) Children take revenge in horror sequel: fiction.

Compiled by *The Chronicle of Higher Education* from information supplied by college stores throughout the country. November 5, 1980

**In Appreciation**

The family of the late Mr. Francis G. Fry, Sr., takes this means of expressing sincere appreciation to those who were so kind and thoughtful during the brief illness and death of our loved one. The prayers, visits, cards, flowers, expressions, food provided and many other deeds will long be remembered.

Our special gratitude goes to Dr. E. R. Owens and the staff of the Memorial Hospital of Waller county for their kindness, dedication, and professional attention.

**NOTICE:**  
**ALL EMPLOYEES COVERED BY MEDICAL INSURANCE**  
 Deadline for 1979 Medical Claims  
 All 1979 Medical Insurance Claims must be received by the Personnel Office no later than, December 15, 1980. Claims for 1979 received after that date can no longer be processed.  
 Lincoln M. Catchings, Jr.  
 Director of Personnel Services

**THE PRAIRIE VIEW PANTHER**

Published Bi-Weekly in the Interest of a Greater Prairie View A. and M. University. The PANTHER serves as the voice of Pantherland.

Prairie View A&M University is open to all, regardless of race, color, religion, or national origin.

REPORTERS: .... Hedy Ratcliff, Janice Harris, Patricia Turner  
 Valerie Hawkins, Michael Brown, Eunice Baldwin  
 Pamela Shorter, Sharee Carey, Rose Gildon, Edith Scott

SPORTS: ..... Michael Hearn, Jerry Mathis, David Wells  
 (Henry Hawkins)

CLERICAL: ..... Shannon Dennis, Malbe Garcia  
 (Vanessa Jackson)

ADVERTISING: ..... Melba Garcia (Gloria Perez)

PHOTOGRAPHY: ..... Brett Horn  
 (Paris Kincade, Tom Godwin)

Any news items, advertising, or matters of interest to THE PANTHER may be presented to the Department of Student Publications, Room 108-112, New Classroom Building Telephone 857-2117. C. A. Wood, Publications Director.

CASS Student Advertising, Incorporated  
 1633 West Central, Evanston, Illinois 60201

**Home Economics Students**

**Attend State Workshop**

Amid the array of helium balloons, colorful clowns, and a talented ventriloquist, over 200 members of the Texas Home Economics Student Section were welcomed to the 1980 Annual State Workshop hosted by Baylor University Home Economics Association, October 23-25. Prairie View A&M University members and co-sponsor in attendance were: Willane McDonald, President; Iberia Fryer, Secretary; Lizabeth Prater, member; and, Miss Bernice Smith, Assistant Professor of Clothing and Merchandising-Co-sponsor.

The objectives of the annual workshop were to: provide informative seminars and conduct educational demonstrations for the purpose of bringing persons together who shared mutual interests; and, elect new officers for the 1980-81 academic year. Lizabeth Prater was nominated for the competitive office of Nutritional Council Delegate and was edged out by a Texas Christian University student. Our voting delegate was Willane McDonald. Iberia Fryer participated in scrapbook judging.

One of the highlights of the Workshop was a presentation given by Dr. Kinsey Green, President of the American Home Economics Association. "Impact on the 80's" was the topic of her dynamic presentation which shall be available upon request from Dr. Flossie M. Byrd, Dean of the College of Home Economics.

THESS members at the 1980 Workshop represented 21 colleges and universities from around the state. They were given a view of Baylor University and Waco as they

**BRANNAN'S SUPERMARKET**

MEATS OF QUALITY

372-3639

220 Cherry

Waller

**All Faiths Chapel Drive Now Up to \$455,451**

We're pleased to announce that according to The Reverend W. Van Johnson, Dean of Chapel, Prairie View A&M University, we have reached the sum of \$445,451.84 in our efforts to build an All Faiths Chapel at Prairie View A&M University. According to Reverend Johnson, our goal is to raise \$500,000 Dollars in cash prior to the Twenty-third Annual Ministers' Conference in February 1981. This goal can be realized; we're just \$55,000.00 short.

According to The Reverend Johnson, the Ministers in the Fort Worth area will sponsor a Mass Fund Raising Activity prior to the Christmas Holidays. This Activity will be directed by The Reverend B. L. McCormick, Pastor of Baker Chapel A. M. E. Church and Dr. Gween Brooks, a Prairie View Graduate and Practicing Physician in fort Worth, Texas. We will announce the date at a later time.

The All Faiths Chapel Fund Raising Campaign is moving along very well according to The Reverend W. Van Johnson.

**IEEE Officers Elected**

The Institute of Electrical and Electronics Engineers, Inc. has elected their officers as well as their Queen for the 1980-81 school year and are well on their way with several major events on the agenda for the upcoming school year.

The IEEE officers are as follows:

President ..... Keith Smith  
 Vice President . . . . . Alane Mavis  
 Secretary ..... Lisa Tolden  
 Asst. Secretary . Iva Wheeler

(Brother) Abram, Harry Merriwether, William (Brother) Abram, Harry Merriwether, and Lee A. Merriwether, Jr., and Ravon Merriwether.

Treasurer . . . . . Shirley Deese  
 Asst. Treasurer . . Elaine Bell  
 Reporter . . . . . Harold Dockins  
 Our lovely queen is Miss Lisa Tolden, a junior from Houston, Texas, majoring in Electrical Engineering.

IEEE has a field trip scheduled November 18, 1980 to Texas Instruments in Stafford, Texas. The second annual Macho Man contest is a tentative event at the present. Other events are still on the drawing board at the moment and will be discussed later on.

Those interested in joining IEEE should contact the President, Keith Smith at 4042 or Bart Johnson at 4087.

**THIS WEEKEND, YOU'RE AS GOOD AS HOME ON GREYHOUND.**



With convenient, economical Friday departures and Sunday returns.

Weekends this school year can be the best travel time ever with going-home bargains from Greyhound. And, as always, whenever you go Greyhound, you get the comfort, convenience, and reliability we're famous for.

Just check the schedules below for the Greyhound routes going your way. Most schedules stop at convenient suburban locations. Call your local Greyhound representative for information, and you're as good as home.

PRAIRIE VIEW A&M UNIVERSITY			
Friday		Sunday	
Lv Prairie View	1:41 PM	Lv Dallas	1:35 PM
Lv College Station	2:49 PM	Lv Waco	4:20 PM
Ar Waco	5:10 PM	Ar College Station	6:41 PM
Ar Dallas	7:35 PM	Ar Prairie View	7:49 PM

Schedules operate every weekend with the exception of holidays, exam week, and semester break. Prices and schedules subject to change. Some service requires reservations.



And leave the driving to us.

**Kollar Korner**

by Elder W. Hennesey

**"It's Now or Never"**

**Ecclesiastes 9-10**  
 "Whatso ever thy hand findeth to do, do it with thy might; for there is no work, nor device, nor knowledge, nor wisdom, in the grave, whither thou goest!" Eccl. 9:10

The word now means — At once, during the present time, or in the immediate future. Never — (is just the opposite of now) not at any time, not at the present and not at all in the future.

In Ecclesiastes 9:10 are the words of Solomon, the third king of Israel. He reigned 40 years before the twelve tribes were divided. Solomon was the most famous and most powerful king in all the world in his day. Noted for wisdom, riches, honor, splendor, power and literary attainments. Solomon saw earthly life at its best. Whatever his eyes or heart desired he kept not from them. It seems that Solomon made it his chief business in life to see how good a time he could have. One might say, "He was Happy" yet his unceasing refrain was, "All is Vanity."

The scope of this verse is to show US that we live in a world of changes and there is no true security. With this knowledge we should take advantage of every opportunity, NOW. "Whatsoever thy hand findeth to do, do it with thy might!" **ITS NOW OR NEVER.**

We live in a world of preparation that one day in the future we might perform. Students at Prairie View University are preparing to face the future. Your actions today will determine tomorrow. Now is the time for every intention, every aim, and every purpose to be fulfilled. And we should cheerfully content ourselves with and make use of the opportunities that God has given Us. When? **Right Now.** "For there is no work, nor device, nor knowledge, nor wisdom, (When we are dead)

in the grave, whither thou goest!"

This is not only a world of changes and preparation but also a world of service. You are preparing to serve. All life is service. "For none of us liveth to himself, and no man dietheth to himself." Romans 14:7. I fully realize the modern doctrine, "every man for himself and God for us all;" but that theory has no foundation in fact. The laws of nature show that there is nothing in nature that is independent of other creatures. Nothing serves itself only. All serve other things in God's creation. Neither can man be thought of as not serving, For when he does not serve, yet he serves, if only by his self-chosen in action. So its now or never to serve ourself, to serve others and above all to serve God.

In my conclusion remember we have now the opportunities that Solomon did not have. God gave Solomon wisdom and an unparalleled opportunity to observe and to explore every avenue of earthly life. And, after much research and experiment, Solomon concluded that, on the whole, humanity found little solid happiness in life; and in his own heart he found an unutterable yearning and crying for something beyond himself. His cry was for a saviour.

With the coming of Christ, the cry was answered. The vanity of life disappeared. No longer vanity. But joy, peace, and happiness.

Do you have this joy, peace and happiness. Christ was not in the time of Solomon but he is here today in spirit. And he will give you an abundant life full of joy if you will let him, now.

**ITS NOW OR NEVER.**

Gold is so high, if we open Fort Knox, we might be able to buy the country back from the Arabs.

**UTMB-Galveston Sets Program for Pre-Meds**

The University of Texas Medical Branch at Galveston announced plans to sponsor the 12th Annual Medical School Familiarization Program (MSFP) for undergraduate students interested in a career in medicine. The four-week summer program is designed to identify qualified minority and disadvantaged pre-med students, to expose them to the demands of medical school, and to prepare them to attain their goal.

The 1981 Medical School Familiarization Program will run from May 31 through June

26, 1981. The deadline for application is February 20, 1981. For more information and application, write:

Office of Special Programs  
 Office of the Dean  
 of Medicine

The University of Texas  
 Medical Branch  
 Suite 165 Gail Borden Bldg.  
 Galveston, Texas 77550

Representatives from the Office of Special Programs will give a slide presentation on the Summer Program and will be available on the Prairie View A&M University campus to answer students' questions at

3:30 p.m., Wednesday, November 19, Room 102, Harrington Science Building. Any minority and/or disadvantaged undergraduate with a serious

**Ten Top Sounders**

1. Master Blaster Jammin' — Stevie Wonder
2. My Lovely One — The Jacksons
3. Let Me Be Your Angel — Stacy Lattisaw
4. ever Knew Love Like This — Stephanie Mills
5. Love T. K. O. — Teddy Pendergrass

interest in medicine, or would like to explore medicine as a career option is invited to attend. For more information contact the pre-med advisor on your campus, Dr. Edward W. Martin or Dr. George E. Brown.

6. Push — Brick
7. "Party" — Grandmaster Flash & The Furious Five
8. Let Me Talk — Earth, Wind & Fire
9. Wide Receiver — Michael Henderson
10. I'm Coming Out — Diana Ross

**GRADUATING ENGINEERS:**

**Sign up now for a look at one of the year's best job offers**

We offer civilian career opportunities that stress immediate "hands-on" responsibility—your chance for recognition, reward and professional growth right from the start.

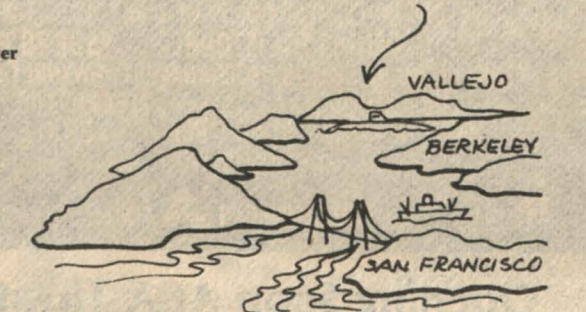
Mare Island is an engineer's kind of world. We're the third largest active naval shipyard in the U.S. and the West Coast's oldest and best known naval institution.

And, we're located in one of the world's best places to live and work—the heart of Northern California! San Francisco is just a bay away. . .the famous wine country is right next door. . .and sailing or skiing are as close as next week-end! To get complete information, contact your placement office and sign up now for an interview.

**INTERVIEW DATE:  
 NOVEMBER 12**

**MARE ISLAND NAVAL SHIPYARD**  
 Vallejo, California

An Equal Opportunity Employer  
 U. S. Citizenship Required



**Ford** **FORD**

**A-1**

USED CARS

Come see our fine selection of

**Ford and Mercury Products**

**HEMPSTEAD FORD-MERCURY, INC.**  
 HEMPSTEAD, TEXAS

**SUPPORTING THE PANTHERS**



# Operation Success: "The Meaning of Honor"

Text of A Speech  
Delivered to  
Honor Students  
by  
Dr. Rita Bostick Lakes



I congratulate the honor students tonight on your demonstration of excellence. Your achievements here are a reflection of your parents, your community this fine institution and most of all a reflection of your honor.

When I think of those years that I sat in hopeful anticipation along with my colleagues, and of course our Greek banners I had difficulty imagining the vast number of opportunities awaiting us if we had the grades, the ambition, and the fortuity. Although the latter traits are necessary we should never forfeit the virtue of honor. This brings me to my central theme tonight. I will expound on the meaning of honor.

When I graduated from medical school I took the Oath of Hippocrates. This oath began with the following: I do solemnly swear, by whatever I hold most sacred: That I will be loyal to the

profession of medicine and just and generous to its members; that I will lead my life and practice in uprightness and honor. The impact of this first paragraph made me reflect. Certainly I have completed four rigorous years of college, four years of medical school, I have passed the required boards exams, developed the required bedside manner, learned to use the required medical instruments—now I was required to be upright and honorable. I realized that this was the most difficult task at hand. I could not reflect back on anatomy notes, or introduction to English or my training in math. These qualities had to come from within. They do not come in your college curriculum guide but should be present whether you are summa cum laude in Engineering, English, Biology or whether you have the humblest job known to man.

But what is honor? In the past, honor had a different connotation than it has today. For a long time in Western Europe honor was associated with Knighthood and chivalry. During those days a knight captured in battle was released on his own pledge to pay a ransom by a certain date.

The modern concept of honor emerged during the Elizabethan era. To be honest and honorable were, in effect, one and the same thing. Honor was sometimes used as a synonym for honesty and integrity, conversely, the word honesty had both its present meaning and the more inclusive one of honor and moral rectitude. The importance of this ideal of complete sincerity can not be overstressed in considering your dealings with your colleagues and your chosen profession. Certainly you have the basic qualifications by being here tonight. But that inner virtue must be cultivated and savored as a precious herb.

But what rewards result from honor? It may be assumed that the desire for honor is innate, but on the other hand we have read of Watergate and the Brilab scandals. You must not be tempted by finances or promises of position to forfeit all that you hold dear.

You must not be concerned primarily with the opinion of others, but with your own conscious, your own sense of integrity and honor. It is important to abstain from dishonesty not only because of the penalties it entails but because of its baseness.

Throughout your lives you will be involved in extremely competitive situations which will require decisions to be made on difficult issues. In your decision making there are a number of alternatives that can result in similarly acceptable results. But the final solution should always measure up to honorable standards which you set for yourself. In a number of issues you may not have the ultimate decision making power. But, it is imperative for each of you to vocalize possible alternative solutions that will accomplish the same goals without compromising your integrity.

There are many loopholes that can be legally acceptable even with the most biting and acid cross examinations. For example many surgeries done for profit can be justified by any number of specialists. However, the bottom line rests on whether the operation was necessary for the promotion of longevity and the reduction of morbidity or whether similar results could have been achieved by more conservative methods such as medicinal, dietary or physical therapeutic means.

Another example can be illustrated by executives of multinational companies using bribes in foreign countries to promote business dealings. Even though these bribes were legal in the countries in which they were executed the whole concept of personal honor is violated by these actions.

So as by these examples and searching into your inner selves you can see that the word honor has a number of different meanings. I am trying to impress upon you the concept of honor in the sense of integrity and personal responsibility.

This type of honor has to exist regardless of your profession or function in life. It has to exist without regard to your present position. It is necessary, it is imperative, that this quality be a part of your very fiber.

Perhaps Hippocrates should have written an oath for everyone. Since he did not I will read one which you should consider applicable to yourselves.

*I do solemnly swear, by whatever I hold most sacred:  
That I will be loyal to my chosen profession;  
That I will lead my life and practice  
My profession with uprightness and honor;  
That I shall always hold myself far  
Aloof from wrong, from corruption, and from  
The tempting of others to vice;  
That whatsoever I shall see or hear  
Which is not fitting to be spoken, I  
will keep inviolably secret. These things  
do I swear.  
Should I be true to this oath,  
May prosperity and good repute be mine;  
The opposite should I prove myself forsworn.*

Thank you

## Alpha's Sphinx Club for Fall 1980

The Brothers of Eta Gamma Chapter of Alpha Phi Alpha Fraternity, Inc. takes this opportunity to acquaint you with the members of the Sphinx Club of Alpha Phi Alpha for the Fall Semester 1980. These seventeen (17) young men have committed

themselves to a pledge program which will provide them with the basic training for personal and professional development. Pledging as defined by Webster is the trial period of requirements before formal initiation into a

See SPHINX CLUB, Page 9

24-HOUR SELF SERVICE  
at  
**HEMPSTEAD WASHATERIA**  
TOP LOADING SPEED QUEEN  
and  
DOUBLE-LOAD PHILCO BENDIX MACHINES  
Next Door to Pick & Pay Food Market  
Hempstead, Texas  
YOUR PATRONAGE APPRECIATED

**CITIZENS STATE BANK**

MEMBER F. D. I. C.  
P. O. Box 575 Phone 826-2431  
HEMPSTEAD, TEXAS

# Concern Growing That Marijuana May Cause Cancer and Emphysema

by Patrick Young  
1980, Newhouse News Service  
WASHINGTON — The street wisdom of the 1970s held that marijuana is essentially a harmless drug.

To anyone familiar with the history of cigarettes and lung disease, it sounded too good to be true. And it is.

Growing evidence shows chronic marijuana smoking can damage the lungs and cause bronchitis, laryngitis, coughing and hoarseness. And now there is concern that pot, like cigarettes, will cause some often-fatal ailments as lung cancer and emphysema.

"Marijuana smoking constitutes the greatest single new threat to the health of our lungs in the United States," Dr. Robert L. DuPont said in the American Lung Association Bulletin. "Finding evidence on the development of human lung cancer from marijuana smoke is, I think, just a matter of time."

DuPont, former head of the federal government's National Institute on Drug Abuse (NIDA), and others say no conclusive proof exists that pot causes cancer. But laboratory findings paralleling those that linked cigarettes to lung cancer and emphysema offer ample reason for concern.

Marijuana smoke contains some proven cancer-causing

chemicals. And when marijuana tars are painted on the skins of laboratory animals, the animals develop cancer.

"There is a proven danger of smoking cigarettes in terms of the health of the lungs," says Dr. Ronald Crystal, chief of the National Heart, Lung and Blood Institute's pulmonary branch. "Since marijuana smoking is similar to smoking cigarettes — although the leaves are different — people are concerned about deleterious effects of the lungs."

Robert Petersen, special assistant to the director of the National Institute on Drug Abuse, says, "If there were no pulmonary effects, we'd all go into shock."

There is fear that pot smoking represents a silent plague which will strike years from now. Serious lung problems in cigarette smokers take several decades to appear. Widespread marijuana use is a recent phenomenon, and a large majority of the nation's estimated 16 million pot smokers are teen-agers and young adults.

"It is apparent that if significant health hazards attached to the use of marijuana exist, a public health problem of considerable magnitude may emerge," Kenneth Alper and Dr. Sidney Cohen of the UCLA School of Medicine warned earlier this year in a review of what is known about marijuana effects on the lungs. "Decades may intervene between the present and the time when the health hazards of marijuana use are fully recognized."

Regular marijuana smokers rarely use more than a few joints a day, and many smoke only one or two a week. This is far fewer than the use of one or two packs dispatched daily by many cigarette smokers, so many people have assumed that any risk of lung problems would be far less for marijuana smokers.

But the way marijuana is smoked may make a joint or two daily as dangerous as

smoking a pack of cigarettes a day.

Smoke consists of tiny solid particles which combine to form its tars and gases (mostly carbon monoxide). Marijuana produces more tar per weight than tobacco does.

Marijuana smokers generally inhale more deeply and hold the smoke in their lungs far longer than cigarette smokers do. The idea is to get greater absorption of pot's intoxicating ingredient — delta-9-tetrahydrocannabinol, or THC. Also, joints are unfiltered and users smoke them to the very end.

As a result, studies by Donald P. Tashkin and his colleagues at UCLA suggest, chronic pot users may

# Personal Social Success

accumulate more tar in their lungs than cigarette smokers. For some, it may prove fatal.

Marijuana consists of more than 400 different chemicals. Its smoke contains a wider variety of known cancer-causing chemicals — and some in greater concentrations — than does cigarette smoke. One example is benzopyrene, which is about 70 percent more abundant in marijuana smoke.

Conclusive evidence linking pot to emphysema also is lacking. But in one study, beagles exposed to the smoke of four marijuana cigarettes daily for nearly 2½ years developed changes in their lungs suggestive of early emphysema.



NAVY BIRTHDAY — A major event in military circles was the recent observance of the U. S. Navy's Birthday. Navy and Army ROTC staffs, cadets and midshipment put on an impressive show.

# The career decision you make today could influence national security tomorrow.

For professionals at NSA contribute to the dual missions of foreign intelligence production and communications security.

Our Electronic Engineers, Computer Scientists and Mathematicians are working with systems at the cutting edge of technology.

Career opportunities and challenge await you in any of these NSA career fields.

**Electronic Engineering:** There are opportunities in a variety of research and development projects ranging from individual equipments to very complex interactive systems involving large numbers of microprocessors, mini-computers and computer graphics. Professional growth is enhanced through interaction with highly experienced NSA professionals and through contacts in the industrial and academic worlds. Facilities for engineering analysis and design automation are among the best available.

**Computer Science:** At NSA you'll discover one of the largest computer installations in the world with almost every major vendor of computer equipment represented. NSA careers provide mixtures of such disciplines as systems analysis and design, scientific applications programming, data base management systems, operating systems, computer networking/security, and graphics.

**Mathematics:** You'll work on diverse Agency problems applying a variety of mathematical disciplines. Specific assignments might include solving communications-related problems, performing long-range mathematical research or evaluating new techniques for communications security.

NSA also offers a salary and benefit program that's truly competitive with private industry. There are assignments for those who wish to travel and abundant good living in the Baltimore-Washington area for those who wish to stay close to home.

Countless cultural, historical, recreational and educational opportunities are just minutes away from NSA's convenient suburban location.

At NSA your future will be linked to the nation's. The vital role that the National Security Agency plays demands and ensures constant challenge and professional growth.

To find out more about NSA career opportunities, schedule an interview through your college placement office. For additional information on the National Security Agency, fill in the information

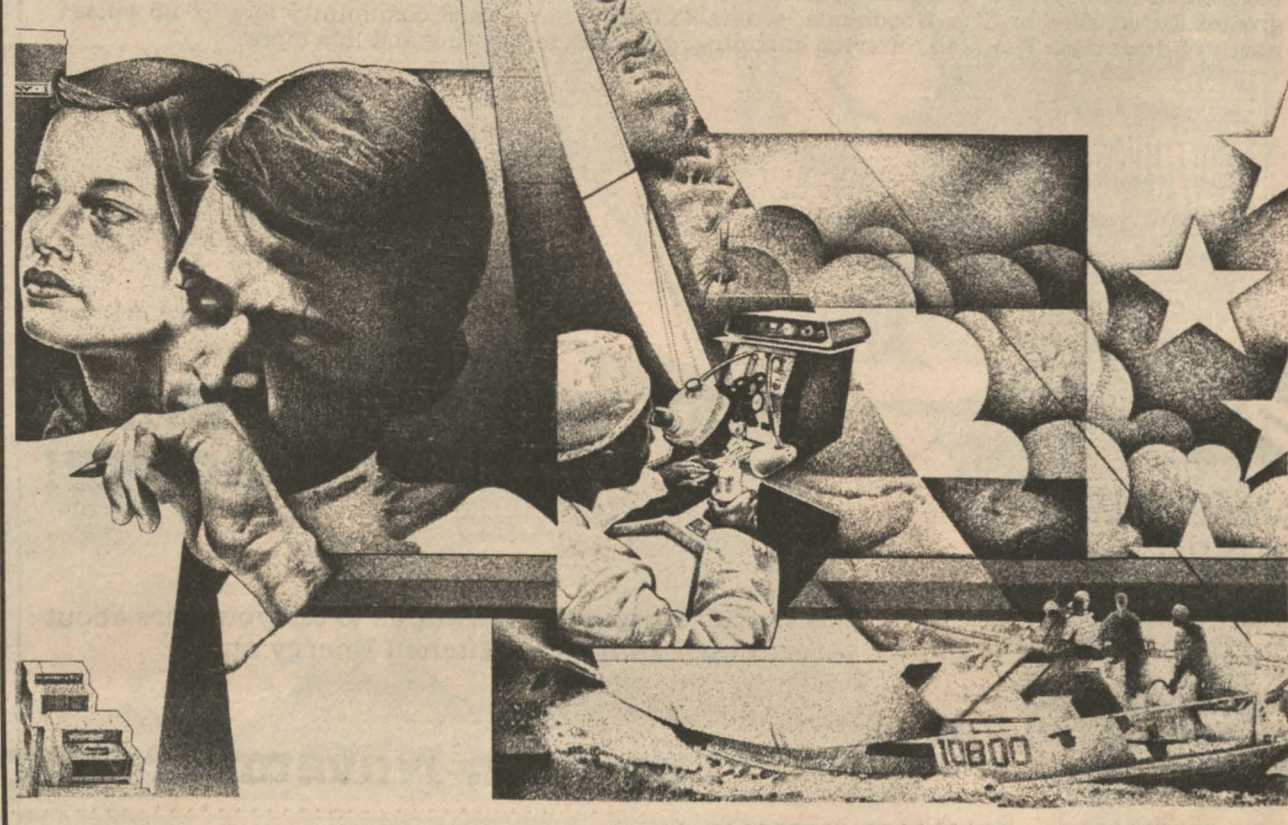
blank below and send it to Mr. Bernard Norvell, College Recruitment Manager, National Security Agency, Attn: Office of Employment (M32R), Fort George G. Meade, Maryland 20755. An Equal Opportunity Employer. U.S. citizenship required.



More than just a career.

I'd like more information about career opportunities with NSA.

Name (print) \_\_\_\_\_  
Address \_\_\_\_\_  
Phone No. \_\_\_\_\_  
Degree Level \_\_\_\_\_ Major \_\_\_\_\_  
University \_\_\_\_\_



PRESCRIPTIONS - DRUGS

Where You Get More Than Just  
A Welcome and Good Service

**CITY DRUG-HEMPSTEAD**  
826-2496 W. W. Wilkes, Owner

**GUARANTY BOND STATE BANK**

MEMBER F. D. I. C.  
Waller, Texas

ERIC BINFORD lives for the movies... Sometimes he kills for them, too!

DENNIS CHRISTOPHER IN  
**FADE TO BLACK**

IRWIN YABLANS AND SYLVIO TABET PRESENT  
A LEISURE INVESTMENT COMPANY & MOVIE VENTURERS LTD. PRODUCTION  
DENNIS CHRISTOPHER IN "FADE TO BLACK"

STARRING TIM THOMERSON, NORMANN BURTON, MORGAN PAULL, GWYNNE GILFORD, EVE BRENT ASHE AND JAMES LUISI  
AND INTRODUCING LINDA KERRIDGE DIRECTOR OF PHOTOGRAPHY ALEX PHILLIPS, JR., A.S.C. MUSIC BY CRAIG SAFAN  
EXECUTIVE PRODUCERS IRWIN YABLANS AND SYLVIO TABET PRODUCED BY GEORGE G. BRAUNSTEIN AND RON HAMADY  
ASSOCIATE PRODUCER JOSEPH WOLF WRITTEN AND DIRECTED BY VERNON ZIMMERMAN

RESTRICTED  
AN AMERICAN CINEMA RELEASE  
1980 American Communications Industries, Inc. All rights reserved.

Opening Soon At A Theatre Near You



# PV Teacher Corps Project Gets Excellent Rating



Mrs. Elaine Long, Program Specialist, National Teacher Corps, Washington, D.C. visited the Prairie View A&M University Teacher Corps Project on September 24-26, and was very impressed with the progress being made in the program. The project represents the collaborative efforts between Prairie View A&M University and the Waller Independent School District and the rural communities served by both the University and School District.

Specific areas of concern that the project is addressing include:

- Improving the achievement of youngsters in areas of basic skills through individualization of instruction.
  - Improving teacher skills through the effective on-site delivery of teacher-planned inservice education.
  - Developing an interagency consortium for the delivery of inservice education.
  - Improving the responsiveness of the University to local education agency's needs for inservice through development of an integrated services delivery model.
  - Designing and installing an integrated pre and inservice approach to teacher education which is field-based, competency centered, and responsive to the special needs of rural low-income students.
  - Designing effective means for the institutionalization of planning process/products so as to assure the long range impact and project developments.
  - Disseminating information about project developments and otherwise assisting the adoption/adaptation of project outcomes.
- Mrs. Long had the opportunity of meeting with representatives of the various components of the program.

These components included community people in a regular community council meeting, cooperating teachers, college clinical professors, policy board members, university and school district administrators and the Teacher Corps staff members and interns.

Mrs. Long was quite impressed with cooperation that existed between the personnel in the WISSD, community and University as well as the acceptance and involvement of the interns and team leader in the school district. The members from the various components are striving collaboratively to achieve the four major Teacher Corps Outcomes. They are in essence:

- An improved school learning
- An improved educational personnel development system
- The adoption/adaptation of educational improvements
- The strategies for institutionalization

In addition to the business sessions Mrs. Long was honored at a reception at the home of Mr. and Mrs. Lorenzo L. Tramble. She was greeted by the various representatives and supporters of the program in a more relaxed atmosphere.

Overall, Mrs. Long indicated to Dr. William H. Parker, Director of the program that she was impressed not only with the Teacher Corps Project, but with the students, faculty and the entire Prairie View Family.

### Thought for Today

Thinking faith thoughts, and speaking faith words, will lead the heart out of defeat.  
Reported  
Sharee Carey

Improve your memory by memorizing the license plate numbers of any suspicious vehicle you see in your neighborhood.

# Funds Available for Gerontology Training Program in 1980-81

A number of stipends are available to support students in the Gerontology Training Program. Interested students can obtain further information about the stipends from Mr. Bobby Haliburton, Gerontology Program Director, or Mrs. Jimmie Poindexter. Mrs. Poindexter and Mr. Haliburton may be reached by calling extension 2394 or 4106, or dropping by the Alta Vista Building.

There is an urgent and increasing need for trained personnel to work with the aged. The creation and expansion of service programs under Title XX of the Social Security Act and Titles III, VII, and IX of the Older American Act exacerbated the manpower crisis, especially the need for minority personnel. Positions for professionals, paraprofessionals, and volunteers has steadily increased.

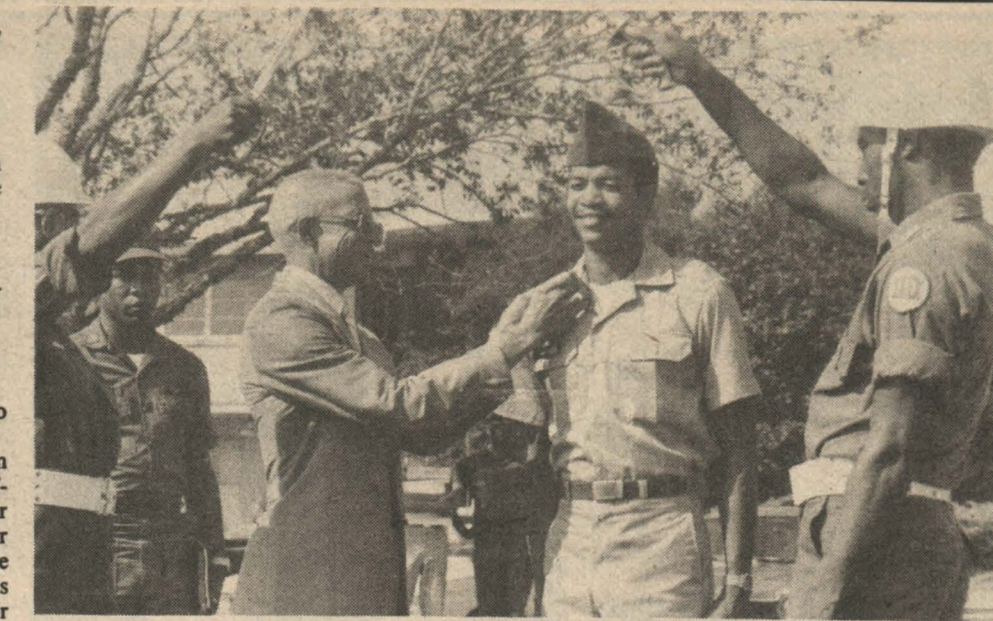
Presently, a major in Gerontology is not offered at the University. However, a student may obtain a minor in gerontology. Gerontology minors must complete a minimum of 21 credit hours. Students are required to complete the following core courses:

- Introduction to Gerontology
  - Biological Aspects of Aging
  - Rural Gerontology
  - Nutrition for the Elderly
  - Field Practicum in Gerontology
- In addition the students must then select 6 electives hours in Gerontology in accordance with the student's major field of Nutrition, Recreation, Social Work or Nursing.

The Sphinxmen include: Rickey Brown, Junior Management major from McGregor, Texas; Johnny R. Brunfield, Sophomore Mechanical Engineering major from Fort Worth, Texas; Donald Carriere, Sophomore Mechanical Engineering major and Dennis E. Crook, Sophomore Electrical Engineering major both from Port Arthur, Texas; Tyrone Davis, Junior Sophomore Management major from Waco, Texas; Carl Johnson, Senior Chemistry major from Houston, Texas; Ronnie Johnson, Sophomore Architect major from Chicago, Illinois; Theodore Mason, Sophomore Electrical Engineering major from Houston, Texas; Ronald Nutall, Senior Electrical Engineering major from Houston, Texas; Aldo Putman, Sophomore Communications major from Chicago, Illinois; Percy Roberts, Sophomore Mechanical Engineering major from Nassau, Bahamas; Rickey Singleton, Sophomore Business and Psychology major from Cairo, Georgia; David W. Valentine, Junior Mechanical Engineer-

ing major from Houston, Texas; Timothy C. Woods, Sophomore Commercial Arts major from Hooks, Texas; and Joseph, Sophomore Mechanical Engineering major from Houston, Texas.

These young men have taken a giant step toward the land of Alpha and only time will tell whether or not they succeed. The Brothers of Eta Gamma are proud of these young men and encourage your support to make this Pledge Period a success. Best wishes are also extended to members of the various Pledge Clubs for the Fall of 1980.



FATHER AND SON — 2nd Lt. Reginald Sapenter, Jr. is shown being pinned by his father, Col. (Ret.) Reginald Sapenter, Sr. during special Presentation Ceremonies. Others involved and pictured include at left: C/Cpt. Cheryl Adkins and Major Charles Williams. At right (holding sword) is C/Lt. John James.

# MECHANICAL ENGINEERING GRADS



Mitchell Energy is one of the largest independent oil and gas exploration and production and real estate development companies in the United States. Positions will be located either in the greater Dallas area or The Woodlands, a new 23,000 acre planned community located 25 miles north of downtown Houston, offering shopping, golf, tennis, boating and lots more.

**MITCHELL ENERGY & DEVELOPMENT CORP.**  
2001 Timberloch Place  
The Woodlands, Texas 77380  
An equal opportunity employer, m/f

**WISH YOU WERE HERE? SO DO WE!**

Our recruiters will be on campus to tell you more about career opportunities at Mitchell Energy on:

**Tuesday, November 18**

**Schwarz Inc.**  
"105 Years of Continuous Service"  
COMPLETE DEPARTMENT STORE and FURNITURE STORE  
It's a pleasure doing business with you  
Tel. 826-2466 P. O. Box 535  
Hempstead, Texas

**HEMPSTEAD CLEANERS**  
DRY CLEANING  
Alterations — Laundry Service  
Phone 826-3798 12th and Austin  
Hempstead, Texas  
1-DAY DRY CLEANING SERVICE

## PUT YOUR SCIENTIFIC OR ENGINEERING DEGREE TO WORK



If you're a degree candidate who would like to embark on a future-oriented scientific or engineering career, then consider the United States Air Force. It's one of the finest opportunities in the nation. Completion of our three-month Officer Training School nets you an officer's commission and launches you into a career that's geared for tomorrow. Our equipment is among the finest, our working conditions are excellent, and our benefits package unmatched. Find out about a space age service from your nearest Air Force recruiter.



SSGT. RONALD HAMILTON  
U. S. Air Force  
707 University Dr.  
College Station, Tx 77840  
(713) 846-6790 (Collect)

# E-Systems continues the tradition of the world's great problem solvers.

Recognized with Archimedes and Newton as one of the three greatest mathematicians, Karl Gauss also pioneered math in astronomy, gravitation, electricity and magnetism. E-Systems engineers are continuing in his footsteps today. They are pioneering technology and solving some of the world's toughest problems in electronic transmission and signal-reception in an interference and noise background using basic Gaussian concepts.

E-Systems "pioneering" in communications, data, antenna, intelligence and reconnaissance projects results in systems that are often the first-of-a-kind in the world. For a reprint of the Gauss illustration and information on career opportunities with E-Systems in Texas, Florida, Indiana, Utah or Virginia, write:

Lloyd K. Lauderdale, V.P. — Research and Engineering, E-Systems, Corporate Headquarters, P.O. Box 226030, Dallas, Texas 75266.





### Blacks Advanced in Education in 1970; Study Shows

Black Americans chalked up important educational gains during the 1970s, particularly at the high school level, according to a new report from the U. S. Department of Commerce's Census Bureau.

One of the most dramatic gains involves Blacks with a high school education, the total of whom reached an all-time high. In 1970, only 56 percent of Blacks 25 to 29 years old had completed high school. By the end of 1979, the percentage with high school diplomas in the same age category had risen to 75 percent.

The report notes that Blacks continued to make important gains in higher education. For example, the proportion with college degrees, among those 25 to 29 years old, increased from 7 percent in 1970 to more than 12 percent by the end of 1979. An even greater increase was noted for Blacks who had completed one year of college or more; the percentage of those age 25 to 29 rose sharply from 17 percent in 1970 to 31 percent by 1979.

Still, college education continued to be more common for Whites than Blacks. As the 1970s drew to a close, 17 percent of Whites 25 and over had completed 4 or more years

### Administrators of Texas Government Test Announced

Announcement is made of recent changes in the availability of examination for Texas Government. For a number of years, Educational Testing Service offered Texas government as Item 21 of the National Teacher Examinations. This practice has been discontinued.

Effective immediately, the examination in Texas government will be available through a special administration of the Texas Government test only at the selected sites and on the dates listed below.

Educational Testing Service — Southwestern Regional Office, Austin

of college compared with only 8 percent of Black adults.

The report has detailed tables showing educational attainment of the population by marital status, residence, and occupation as well as age, sex and race.

Single copies of Educational Attainment in the United States: March 1979 and 1978, P-20, No. 356, may be obtained for \$4.00 prepaid from the Superintendent of Documents, U. S. Government Printing Office, Washington, D. C. 20402, or from Commerce District Offices in major cities of the U. S.

- Pan American University, Edinburg
- University of Texas at El Paso
- Texas Tech University, Lubbock
- West Texas State University, Canyon
- Southern Methodist University, Dallas
- University of Houston (Central Campus)
- St. Mary's University, San Antonio

The Southwestern Regional Office of the Educational Testing Service in Austin will provide descriptive flyers and registration materials for these special administrations of the National Teacher Examinations to test centers throughout the state. Candidates for the examinations should be directed to contact the Educational Testing Service, 211 East 7th, Suite 100, Austin, Texas 78701 (512-478-8191) for further information.

Questions regarding 1981-82 test sites and dates will be decided and disseminated at a later date.

For information concerning 1981-82 test sites or dates inquires should be directed to the Southwestern Regional Office of the Educational Testing Service at the above address or phone number.

### Issues and Events

**IRAN**  
The Iranian Parliament presented a proposition to the U. S. for the release of the hostages, which states that the U. S. must: cancel and abrogate all financial claims against Iran; return the assets of the late Shah; unfreeze all Iranian assets in the U. S.; and lastly, make a pledge and a promise that the U. S. will not interfere in the Iranian affairs directly or indirectly.

**FBI**  
The Federal Bureau of Investigation is launching a nationwide crackdown on white-collar crime. Regarding fraud and abuse in the medicare and Medicaid programs. Fraud throughout the United States is costing taxpayers as estimated \$700 million annually. The investigation's descriptive name is

### Kappa Alpha Omega

The Brothers of Kappa Alpha Omega Fraternity would like to welcome two new inductees into the fraternity. The inductees are Mr. Brian Burton, a sophomore from Houston, Texas majoring in Industrial Education and Mr. Tommy Wilson, a sophomore from Milano, Texas majoring in Mechanical Engineering. The Brothers would like to congratulate these neophytes on their continued success. The Brothers also would like to encourage everyone to attend a Child Abuse Seminar sponsored by the Dept. of Sociology in

Hobaart Taylor Bldg. in Rm. 1A110 on November 18, 1980 at 8:30 a.m. The Brothers, in their efforts to make Martin Luther King's birthday a legal holiday, are initiating a petition to make this goal possible. The fraternity would like to recognize Bro. John Mack as section leader of the saxophone section and Bro. Barry Menefee as assistant section leader in the trumpet section of the Prairie View A&M University Marching Band.

Michael Love  
"Deathstar"

### Nominations Sought for 1981 Small Business Week Honors

The U. S. Small Business Administration (SBA) recently urged Black-owned business persons and black trade and banking associations to nominate persons to be honored during Small Business Week in 1981.

Each year, SBA notes the achievements of small business by sponsoring a week-long national program. During this program, called National Small Business Week, the beneficial role of small companies in the national economy is stressed and outstanding small business persons around the country are honored. Also honored are a number of persons with outstanding records for having acted as advocates for the small business community — including advocates for minority business — and for performing with distinction on federal procurement contracts.

### Panther Supplement — Insider Magazine Is Guide For Use of Money

"Money! Money! Money!" is the title of the fall issue of Ford's Insider, a 24-page, full-color supplement to the Panther appearing in the November 6th issue.

Each Insider issue deals with one feature topic of interest to college students. The upcoming issue offers students tips on dealing with the economy and getting the most out of a dollar. Examined are student credit, smart shopping strategies, dealing with rip-offs, student housing alternatives, and ways to live on less. There's even information on

how some students make money during college years, and how others locate sources of financial aid.

For the fourth year, Ford Motor Company is the exclusive advertiser for the Insider program because of their interest in providing services to college students. 13-30 Corporation, the nation's largest college magazine publisher, edits, designs, and distributes Insider for Ford.

### Happy Thanksgiving

By Hedy Ratcliff

Softly blossoming with so much grace,  
Each day a child is born, which creates a rising generation  
The future is bright seek what you desire in an honest fashion.  
Cherish your family with honor  
The beauty of love that binds a family together is a powerful inspiration.  
This is a time for joy  
Happy Thanksgiving, thank god for blessing and guiding you, this far along the way.  
Abide in God's will and you shall find happiness.  
Happy Thanks giving, do good unto all, you have nothing to worry about when you accept Jesus in you life everyday.  
Live for what's right through kindness.  
Observe the melodies of nature.  
Behold the radiant sun that shines on us all, until it swiftly fades away.  
A compassionate heart will comfort you, just reach out your hand graciously  
Think of how blessed you are to exist for some special cause today.  
Happy Thanksgiving to you.



SCENES FROM CAREER FESTIVAL HELD AT CAMPUS IN SEPTEMBER.

(Labscam).  
**ECONOMICS**

The average cost of owning and operating a new car rose a record 18% or 6.4 cents per mile in 1980, therefore making it

costlier to operate a typical subcompact than it did a luxury model eight years ago, a survey showed. The dramatic increase was sharpest for hot-selling and high-priced small cars, stated officials of the Hertz Corporation.

# THE \$74.95 DIPLOMA.

(Save up to \$20 on Siladium® College Rings.)

Siladium rings are made from a fine jeweler's stainless alloy that produces a brilliant white lustre. It is unusually strong and is resistant to deterioration from corrosion or skin reactions.

In short, it's quality and durability at an affordable price.



Both men's and women's Siladium ring styles are on sale this week only through your ArtCarved representative. Trade in your 10K gold high school ring and save even more.

It's a great way of saying you've earned it.

**ARTCARVED**  
COLLEGE RINGS  
Symbolizing your ability to achieve.

Monday-Tuesday,  
November 10-11

Bookstore

# Exchange Store

Deposit required. Master Charge or Visa accepted.

©1980 ArtCarved College Rings



SCENES FROM PROBATE SHOW.

### Support The Panthers

Tinsley's

Chicken and Rolls



TINSLEY'S  
HWY 290 BOSS BIRD  
Hempstead, Texas

### Credit Card —

CONTINUED from Page 1-A

In addition to the Sears Credit Card, plans are underway to include cards from such chain stores as Foley's, Montgomery Wards, J. C. Penney's, Palais Royal, Joske's Neiman-Marcus and Lord & Taylors. To supplement the credit card program, the chapter will be sponsoring seminars of "good money-management", "establishing credit and how to keep it", and "developing a personal budget", to name a few.

Each month the Chapter will sponsor "Official Sign-Up Days" for Sears Credit Card. November 17, 18, 24 and 25, 1980 has been set for sign-up in the Memorial Student Center. For additional information contact Jimmy Williams at 2464 or Donnie Anderson at 4863.

## PIG SKIN REVIEW Prairie View A&M University

MAIN ATTRACTION  
"THE FAMILY BAND"

"BUTTER SWEET CONNECTION"

"NEW DAY BAND"

### Friday, November 7, 1980

9:00 p.m.—2:30 a.m.

in the

## UNIVERSITY FIELD HOUSE

Admission: \$2.00 per person

Followed by:

## THE BREAKFAST DANCE

3:00 a.m. until 8:00 a.m.

## WOMEN'S GYMNASIUM



## Recent Grad Signs With Houston Grand Opera Co.

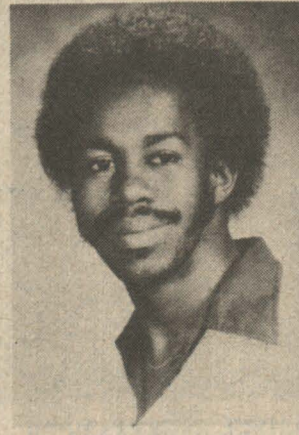
Gary L. Beaner, a 1980 graduate of Prairie View A&M University, has returned to Texas and is now teaching in the Houston Independent School district and singing with the Houston Grand Opera Company (HGO).

Mr. Beaner studied in Graz, Austria last summer with Metropolitan opera star George Shirley and Mrs. Carol Brice Carey, wife of Thomas Carey both noted singers in America and Europe.

Gary met David Johnston, an American composer, who composed German Leier in Graz, Austria. Mr. Beaner sang two songs for Johnston and Klabund Leier. Mr. Johnston was very impressed with Mr. Beaner's performance.

Mr. Beaner was reviewed by Kleine Zeitung and Tagespost. Kleine said, "Mr. Beaner sang very interesting Klabund Leier," and Tagespost said, "A very brilliant tenor voice."

Mr. Beaner wishes to thank the many people for their cards and letters sent to him while studying in Europe. He is deeply indebted to Dr. Rubye M. Hebert for her underlining strength in help making his summer experience a reality.



Gary Beaner '80

Don't Miss  
The First Annual  
**FACULTY  
TALENT  
SHOW**

November 6, 1980

7:30 p.m.

Hobart T. Taylor  
Recital Hall

## Who's Who in American Colleges



Clarence Talley

Mr. Clarence Talley has been included in the seventeenth edition of Who's Who in the South and Southwest. Talley is an assistant professor in the Department of Art and has been on the teaching staff since 1975. He has participated in numerous juried and invitational exhibits in addition to the inclusion in many private and public collections.

A recent ceramic exhibition now on display in W. R. Banks Library is a prime example of Talley's accomplishments.

## Kellogg Foundation Seeks Applicants For Fellowship Program

If you are a young American professional with ideas, courage and conviction, and are eager for an opportunity to build your leadership skills and make a new kind of contribution to the world around you, the W. K. Kellogg Foundation's National Fellowship Program may provide you with a chance to do just that.

Fellowship grants of up to \$30,000 each will be awarded to as many as 50 individuals, in cooperation with their parent institution, to pursue self-directed, interdisciplinary study plans over a three-year period. Study experience may include workshops, seminars, short courses and travel designed to promote personal development consistent with the program's objectives.

This year's program is open to individuals 40 years of age or younger as of July 1, 1981, who hold academic, practitioner or administrative positions on the staffs of land grant colleges or universities, as well as those on the staffs of institutions included in the membership rosters of the Association of American Universities or the Association of Academic Health Centers. In addition, a limited number of Fellowships may be awarded to persons who occupy professional staff positions with national organizations having a special relationship to Foundation programming interests.

The boundaries from which candidates will be drawn include all disciplines.

"The objective of the program," explained Kellogg Foundation President Russell G. Mawby, "is not to help

individuals deepen their expertise in any one discipline, but to stretch their perspectives and better equip them to interpret the complexities of society's many problems and challenges.

"We hope to get people to look at their own professions in a broader context to see how decisions they make affect others. A young agriculturalist, for example, should be at least generally aware of how American agricultural output relates to worldwide issues of hunger, nutrition and energy shortages. It is a question of the moral and social implications his own agricultural decisions will have on society at large."

To apply for a Kellogg National Fellowship, individuals must be endorsed by their immediate supervisor(s) and the chief executive officer of the institution or association represented.

Recommending institutions will be expected to cooperate in the preparation of candidates' proposals. They also must provide Fellows with 25 percent release time from their jobs to pursue their study plans. Half of the release time costs will be funded by the Foundation.

Applicants are asked to submit a statement of professional goals and an outline of their proposed activity as part of the formal application. The plan should include an estimated budget.

Completed applications and all institutional references must be received by November 15, 1980. Applications are currently available in the offices of the Deans. Vice President for

Academic Affairs and office of the chief executive of eligible institutions, agencies or associations.

Based upon applications and references, candidates for the Fellowship program may be asked to appear for a personal interview at Foundation expense. A selection committee has been appointed by the foundation to determine Fellowship recipients.

Contact your Dean or Chief Executive Officer if you want additional information about this unusual opportunity for professional development.

Announcement of Fellowship awards will be made by March 15, 1981.

## Panthers —

CONTINUED from Page 12

yards and seven touchdowns.

Panther leaders are sophomore Byron Holmes with 132 yards rushing on 60 carries, sophomore quarterback Maurice Mitchell with 356 yards passing on 27 of 84 attempts and junior split end Tommie Dunson with 301 yards on 18 catches.

Defensive standouts for Pine Bluff are Antwyne Golliday, a 225-pound sophomore line-backer, who has registered 66 tackles and one fumble recovery, freshman defensive end Michael McInnis who has been in on 53 tackles and defensive back Greg Armour who has six interceptions along with 55 tackles.

Some smart aleck predicts that youngsters soon will be trading bubblegum cards with pictures of golfers on them.

## Mississippi Valley Wins Over Panthers 47-7

Greenwood, Miss. — The Prairie View Panthers dropped a 47-7 decision to the Mississippi Valley Delta Devils in a passing onslaught at the hands of senior quarterback Lloyd Farmer who threw five touchdowns.

Farmer completed 17 of 32 pass attempts for 305 yards. His touchdown passes were for 55, 11, 7, 13, and 16 yards.

Panther quarterback Wilbert Meyers was tackled in the endzone by Phillip Darns for a safety and quarterback Maurice Mitchell has a pass

intercepted and returned by Charles Edwards 43 yards for a touchdown.

Mitchell scored Prairie View's lone touchdown on a four-yard run.

John White, James Hicks, Andrew Winzer, and Kevin Sullivan led the defensive charge for the Panthers holding the Delta Devils to 102 yards on the ground.

The Panthers will host the University of Arkansas at Pine-Bluff for their 1980 Homecoming at Blackshear Field this Saturday.



James Hayes  
Defensive Leader

Roy, 25th at 38:40; Mel Trahan, 27th at 38:51; James Stewart, 36th at 39:41 and Keith Lundy, 43rd at 41:31.

The conference meet ended the cross-country season for the women's team while Hoover Wright, men's track coach said he was contemplating sending a couple of his top runners — Miller and Roy — to the NCAA District 6 meet at the University of Texas on Nov. 15.

The top three teams plus top four finishers not on the top three teams advance to the NCAA Division I cross-country championship in Wichita, Kan. Nov. 24.

## Panthers Host Arkansas-Pine Bluff

Stopping a runaway Golden Lion will be the order of the day when Prairie View hosts Arkansas-Pine Bluff in the annual homecoming football clash at Blackshear Field Saturday.

The Lions sport just a 4-4 record but have scored points in bunches, scoring at least 13 points in all their games except one, a 12-6 loss to Kentucky State.

Pine Bluff, under first-year coach Ben McGee, dropped its first three games of the

season, then rolled off three straight victories over Lincoln, Mo.; Southern Srk. and Lane, Tenn.

Kentucky State snapped that winning streak but the Golden Lions got right back on the winning track with a 22-6 victory over Langston.

The Panthers, under first year coach Cornelius Cooper, dropped their first five games of the season, ended a 16-game losing streak with a 3-0 victory over Texas Lutheran then dropped a 47-7 decision at

Mississippi Valley. Panther defensive leaders John White, Kevin Sullivan and James Hayes will have their hands full in stopping the Lion offensive machine led by Cleophus Collier, Bennie Bowers and Feryl Jordan.

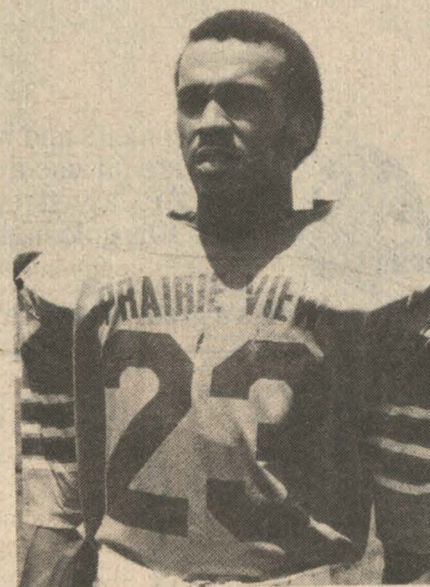
Collier is the leading rusher with 755 yards and eight touchdowns, Bowers, a tight end, is the leading receiver with 263 yards on 12 catches and three touchdowns and Jordan has hit 41 of 87 passes for 672

See PANTHERS, Page 11



## PLAYER OF THE MONTH

The leading tackler on the Prairie View football team is John White, a 6-1, 175-pound sophomore from Beaumont, Texas. Prior to the homecoming game with Arkansas-Pine Bluff, White had logged 30 unassisted tackles and was in on 13 assists. He has intercepted one pass and recovered three fumbles. "Has really come into his own this season" says coach Cornelius Cooper. "Has been one of our steadiest ball players on defense."



JOHN WHITE

PLAYER OF THE MONTH  
Sponsored by The Miller Brewing Company  
KRISTEN DISTRIBUTING CO., Bellville

## PRAIRIE VIEW A&M UNIVERSITY EMPLOYEES FEDERAL credit union

P. O. BOX 2606  
PRAIRIE VIEW, TEXAS 77445

A Service to The Prairie View Community for Over Forty Two Years

LOANS: Share Secured	10% Annual Percentage Rate
Real Estate	12% Annual Percentage Rate
Personal	15% Annual Percentage Rate
SHARES: (Savings)	7% Annual Percentage Rate

OUR MOTTO: "Not for Profit  
Not for Charity  
But for Service"

OFFICE HOURS: Monday thru Friday 9:00 - 6:00 p.m.

PHONE: (713/ 857-4925)

OFFICE LOCATION: P. V. Alumni House



Dear Friends:

As a special sales representative for Lawrence Marshall Chevy-Olds I can offer you and your friends great deals on new or used cars and trucks.

Please call or come by and ask for me.

Thank you,  
TIM LEWIS



HEMPSTEAD  
826-2411

## LAWRENCE MARSHALL CHEVROLET-OLDS., INC.

P. O. Box 983 — Hempstead



HOUSTON  
463-8484

Harness the wind.  
Soak up the sun.  
Build a dam.  
Smash an atom.  
Purify combustion.  
Scrub the air.  
Tap the heat of the earth.  
Discover a new source.

And build a career that knows no limits.

SCE is one of the four largest investor-owned utilities in the country, and we're known as one of the most environmentally responsible, technically innovative and commercially successful organizations in the world. Your career in the technical disciplines or business at SCE can take you into the planning engineering, construction, economics and finance of virtually every kind of energy. Or into telecommunications, environmental engineering or R&D of alternate energy sources. And it all happens in one of the world's most beautiful settings. Southern California provides abundant and affordable recreation, entertainment, cultural and educational opportunities, a moderate year-round climate and a scenic wonderland of beaches, deserts and mountains, all within easy reach.

Talk to us on campus November 21.  
See your placement office for an appointment.

An Affirmative Action/Equal Opportunity Employer

