

Prairie View A&M University

Digital Commons @PVAMU

PV Panther Newspapers

Publications

9-16-1980

Panther - September 1980- Vol. LV, NO. 1

Prairie View A&M University

Follow this and additional works at: <https://digitalcommons.pvamu.edu/pv-panther-newspapers>

Recommended Citation

Prairie View A&M University. (1980). Panther - September 1980- Vol. LV, NO. 1., *Vol. LV, NO. 1* Retrieved from <https://digitalcommons.pvamu.edu/pv-panther-newspapers/237>

This Book is brought to you for free and open access by the Publications at Digital Commons @PVAMU. It has been accepted for inclusion in PV Panther Newspapers by an authorized administrator of Digital Commons @PVAMU. For more information, please contact hvkoshy@pvamu.edu.



The PANTHER

PRAIRIE VIEW A&M

UNIVERSITY

PRAIRIE VIEW, TEXAS

September 11-16,

1980

Volume 55

Number 1



SERVICE AWARD — Captain F. D. Richardson receives Appreciation Plaque from President A. I. Thomas during Annual Staff Banquet. The NROTC Commander has completed a three-year tour of duty on campus and has moved on to a new assignment.

Annual Career Festival Scheduled September 24

The 10th annual Career Festival of Prairie View A & M University is expected to draw more than 85 representatives from big business and corporations in all day interview sessions on September 24 in Alumni Hall.

Booths will be set up by the companies and their agencies, and this is the big chance for Prairie View students to seek first hand information on employment opportunities in their particular major of studies.

"We try to stress to the students that finding a job just doesn't happen, but that an organized search has to be made," says Brutus N. Jackson, director, Division of Career

Education and Placement. "And in our annual festival, the students have a once in a lifetime opportunity in having big business come to them."

Jackson also pointed out that the atmosphere of the entire festival, with exhibits from the world's largest corporations, will allow students the opportunity to discover new and future career trends.

"We are encouraging the faculty and student body to participate in the 1980 Career Festival in this wonderful opportunity offered by Prairie View A & M University as another tool in our overall and continuing "Operation Success" formula," says University President Alvin I. Thomas.

Grant Received for Nursing Scholarships

A Scholarship Grant and Loan Award for Nursing Scholarships in the amount of \$24,720 has been received by Prairie View A & M from the U.S. Public Health Service, Department of Health and Human Services, Dr. A. I. Thomas, president of the University announced.

The grant covers the period

of July 1, 1980 through June 30, 1982, and represents a share for Prairie View of the \$9 million Further Continuing Appropriations for Fiscal Year 1980. (96-123)

Scholarships are being made available to nursing students through the College of Nursing and the Office of Financial Aid.

Drama Department Presents "The Wizard of Oz"

The "Wizard of Oz" is being presented during the week of September 8-10 at 8:00 p.m. at the Hobart Taylor Theatre. It is being sponsored by the Drama Department along with the Charles Gilpin Players. It is being directed and adapted by Lee Turner. The story was written by L. Frank Baum and dramatized by Elizabeth Chapman.

The cast consists of approximately 30 students consisting of the Drama Department and the Charles Gilpin Players.

The performance was also presented this summer on August 12-14. It was a product of the 1980 Summer Concept Institute for drama. Every night was a sellout. There was standing room only.

There will also be a 30-second taping of the show for a television spot on Channel 13. For the promotion of its presentation on September 19, it will be shown in The Cullen Auditorium on the University of Houston Central Campus.

by Cheryl Wickliff

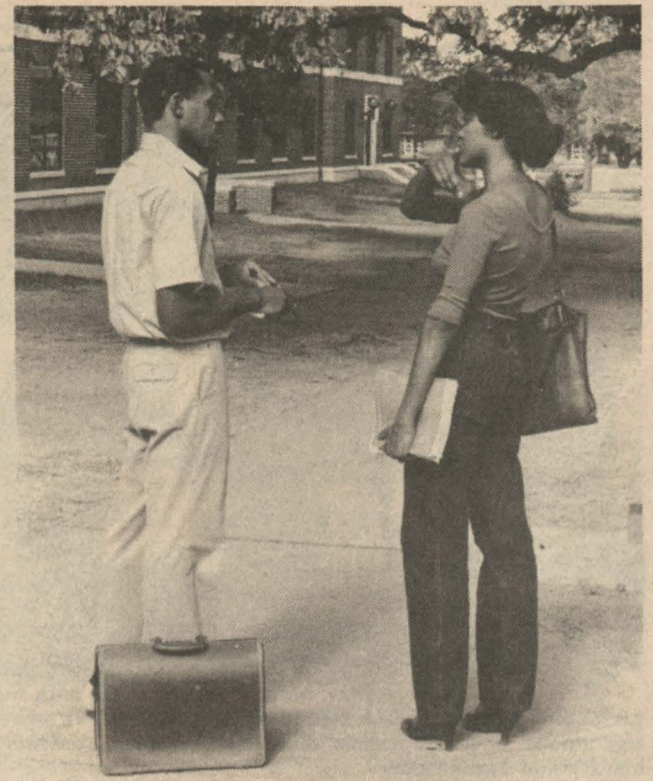
Honors Week Set September 22-26

Convocation Thursday

Prairie View A&M University will observe Honors Week on September 22-26.

The entire university com-

munity will participate in activities scheduled throughout the week, including departmental seminars, special pro-



A NEW ACADEMIC YEAR BEGINS — Students exchange greetings during first day of classes.

A&M System Takes Lead in Medical and Health Education

While mainstream medical education generally continues to be associated with large urban areas and hundreds of specialties, an unusual program in Texas is geared to provide family doctors and nurses for rural areas and enhance minority representation in the medical profession.

The Texas A & M University System — with the medical school headquartered at Texas A & M in College Station, a nursing school at Prairie View A & M near Houston and nursing and medical technologist programs at Tarleton State west of Fort Worth — is changing the face of medical care in Texas.

Programs conducted by the three campuses daily train physicians and nurses for small towns, produce one of the highest percentages of the nation's minority nurses and instruct medical technologists for clinics in the state's largest population center.

Texas A & M, the system flagship, is training nearly 130 primary care physicians (pediatricians, obstetricians, gynecologists, internists, etc.) through facilities at Temple and College Station.

Over the duration of the

grams, and exhibits. The Annual Fall Academic Convocation will be held Thursday, September 25 and the

program, about two-thirds of those graduated are expected to remain in primary care and locate permanently in communities of less than 25,000 people, said Dr. Robert Stone, Texas A & M dean of medicine.

The first class graduated next June.

At Prairie View A & M University one of the oldest minority nurse programs continues to be a leading source of black R.N.'s.

Headquartered in a building adjacent to the Texas Medical Center in nearby Houston, the Prairie View A & M College of Nursing recently graduated 66 students, its largest class ever.

Dr. Jewellean Mangaroo, dean of nursing, said that figure was more than twice the average graduation rate over the previous 15 to 20 years.

She said the Prairie View A & M nurses program, established in 1918, now enrolls about 500 undergraduates, but not all those will reach the critically short nurses labor pool in Texas.

A 10-year career follow-up of PVA&M nursing graduates show that most work their first year in Houston, but as many as 40 percent enter graduate

See A&M System Page 4

President's Annual dinner for Honor Students will be held during the evening of September 25.

24 Students Earn Straight A's

Straight "A" records (4.00) were earned during the Spring semester by 24 students. A total of 528 students are listed on the Honor Roll for the Spring Semester. Women dominated the "best averages list" with 304 to 224 men. Engineering led among schools with 148 of their members listed.

The 4.00 students included: JoAnn Alderson (Senior), Diane Arceneaux (Soph.), William J. Brewer (Senior), Andrea M. Daniels (Junior), Jiles P. Daniels, Jr. (Senior), Hulen M. Davis, Jr. (Senior), Carol L. Gabriel (Junior),

Joseph M. Gonzales (Fresman), Rickey M. Gregory (Senior), Connie Guice (Fresman), Audrey G. Henry (Soph.), Melvin Huff (Senior), Riley D. Johnson (Senior), Sheena Kinniebrew (Junior), Helen Lucenay (Senior), Maxine Lundy (Soph.), Carmelia Matthew (Senior), Yolanda Morrow (Senior), Sonja Randle (Soph.), Edward Rhem (Senior), Elizabeth Smallwood (Senior), Denise Thorne (Senior), Myrna C. Watson (Senior), Lana Denise Zoch (Soph.)



RETIRING STAFF MEMBERS — Pictured (l-r) during Annual Faculty-Staff Banquet are Mr. and Mrs. Wilson Curtis, Mrs. Mary A. Clark; Mr. and Mrs. Q. D. Thomas, and Mr. and Mrs. Duria Henderson.



CLARK FAMILY — Mrs. Mary A. Clark poses with husband and daughters during special dinner and reception held in connection with her retirement from the University. A large number of Dallas friends joined local staff and students in paying tribute to the long-time PV and Texas leader.

\$1000 Prize for Best Poem Offered

A \$1,000 grand prize will be awarded in the poetry competition sponsored by the World of Poetry, a quarterly newsletter for poets.

Poems of all styles and on any subject are eligible to compete for the grand prize or for 49 other cash or merchandise awards.

Says contest director, Joseph Mellon, "We are encouraging poetic talent of every kind, and expect our contest to produce exciting discoveries."

Rules and official entry forms are available from World of Poetry, 2431 Stockton Blvd., Dept. N, Sacramento, California 95817.

Postcard to psychiatrist: "Have a wonderful time. Why?"



Boyden Receives Nat'l Appointment

Dr. Lloyd R. Boyden, Chairman of The Graduate Program in The College of Industrial Education and Technology was recently notified that he has been appointed to serve on the American Council on Industrial Arts Teacher Education Graduate Studies Committee.

The ACIATE is a Council of The American Industrial Arts Association Inc. the national organization for Industrial Arts teacher education. The committee that Dr. Boyden will serve on is concerned with providing guidelines and standards for graduate industrial arts programs nationally.

The appointment is for three years ending in April of 1983. Dr. Boyden indicated that he is honored to have been selected for this appointment because it gives him an opportunity to have input on graduate industrial arts education at the national level and will provide him with information to strengthen the Graduate Industrial Education Program at Prairie View.



Rao Named to Nat'l Committee

Dr. R. N. S. Rao, P. E. Professor and Chairman of Civil Engineering Department was selected as one of the thirty five engineering instructors across the nation for the 'Clark C. Heritage Workshop on Wood as a Structural Material' during this summer. The workshop was held at Madison, Wisconsin during August 11-15, 1980 by the University of Wisconsin under a NSF grant.

Dr. R. N. S. Rao, P. E. Professor and Chairman of Civil Engineering Department was recently selected as a member of the national standardizing committees 'ATSM D18 on Soil and Rock for Engineering Purposes' and 'ASTM D04 on Road and Paving Materials' by the American Society for Testing and Materials. He attended the Committee Meetings in Chicago during this summer. He is also working on a sub-committee on preparation of a registry of all training aids pertinent to the various ASTM D18 Tests.

See TESTING, Page 7

Test Dates For National Teachers Exams Listed

Students completing teacher preparation programs and advanced degree candidates in specific fields may take the National Teacher Examinations on any of three different test dates in 1980-81. Educational Testing Service, the nonprofit, educational organization that administers this testing program, said recently that the tests will be given November 8, 1980, February 21, 1981, and June 20, 1981, at test centers throughout the United States.

Results of the National Teacher Examinations are considered by many large school districts as one of several factors in the selection of new teachers and used by several states for the credentialing of teachers or licensing of advanced candidates. Some colleges require all seniors preparing to teach to take the examinations.

On each full day of testing, registrants may take the Common Examinations, which measure their professional preparation and general educational background, and/or an Area Examination that measures their mastery of the subject they expect to teach.

Prospective registrants should contact the school districts in which they seek employment, state agencies in which they seek certification or licensing, their colleges, or the appropriate educational association for advice about which examinations to take and when to take them.

The NTE Bulletin of Information contains a list of test centers and general information about the examina-

WARD'S PHARMACY
"Your Rexall Store"

SENIOR CITIZEN DISCOUNT
AVAILABLE ON PRESCRIPTIONS

Telephone 826-2445 Nights 826-2295
Hempstead, Texas

Kollar Korner

"As for us, we have this large crowd of witnesses around us. So then, let us rid ourselves of everything that gets in the way, and of the sin which holds on to us so tightly, and let us run with determination the race that lies before us. Let us keep our eyes fixed on Jesus, on whom our faith depends from beginning to end. He did not give up because of the cross! On the contrary, because of the joy that was waiting for him, he thought nothing of the disgrace of dying on the cross, and he is now seated at the right side of God's throne." Hebrews 12:1,2 (GNMM)

The Rev. Darnell L. Walker
Minister:
First United Methodist Church
PV-Waller Road
Director: Wesley Foundation — Methodist Campus Ministry
President: United Ministries — Prairie View A&M University
"A Part of the Texas A&M University System"
Prairie View, Texas

Radar Remote Sensing Project At Prairie View

The staff of the College of Agriculture, coordinated by Drs. O. C. Simpson and E. Brams, are cooperating with scientists from the National Aeronautics and Space Administration (NASA) in a remote sensing experiment using radar to measure the effect of farm land preparation and soil moisture on radar images over soils and fields of farm crops. This experiment is part of a nation-wide study to identify crops and predict crop yields using remote sensing from satellites that circle the earth everyday. Students and staff are invited to visit the radar installation on the Prairie View



25-YEAR SERVICE AWARDS — Staff members who reached their 25th year of service at the University included, from left — Mrs. Vivian Smith, Alumni Hall Director; J. R. Phillips, Chairman Mechanical Engineering; Samuel Montgomery, Assistant Registrar; and Dr. George Stafford, Director of Admissions.

And So You Are Here — Now Where Are You Going?

Welcome! Welcome! Welcome! to the beginning of the rest of your life. You have come to an institution and training center that has promised to make you a productive product. You only have the words of promise, but no realistic reality of productiveness. The matter of the fact is that "failure or success" is left to you. The institution and all its components only provide a setting for your growth and maturity.

You are now surrounded by an overflux multitude of people, crowded rooms, beds, halls, long lines all which spells confusion and frustration. And in the midst of such valley of deprivation, you want to be successful and become productive? You are henceforth called to get rid of everything that gets in your way of arriving including what is called "sin," all of which holds you back. Then you can run with determination the course which is before you. But remember, your source is on before you. What you must do is keep your eyes on the source, Jesus Christ, the author and finisher of our faith.

Now that you have been instructed of your source and your responsibility, let me lay the challenge before you: "Where Are You Going?" Your mind set, attitudes, aspirations, and willingness to invest — determine where you go. For certain, if you do not know where you are going or want to go, you will never get there. Now that you have thought, prioritized and perhaps at least tentatively set for yourself some destiny, your next task is to determine what is success in view of such destiny. How do you spell success? What are you willing to invest toward the realization of success — self discipline, social discipline, cultural discipline, moral-discipline, etc.?

As you pursue this journey, don't grow weary or loose hope on your way. Though the clouds are dark in the sky; God, our Father, is 'greater than any problem' we have. Remember: "He that is within, is greater than he that is within the world." God never sleeps or dispairs, nor has He ever abrogated; and therefore, we

— Meal Cards —

MEAL CARDS WILL BE ISSUED IN DREW AND HOLLEY HALL FROM 8:00 a.m. to 5:00 p.m.

I. PROCEDURE FOR SECURING A MEAL CARD:

- Obtain a meal card permit from your Senior Fellow.
- Present your meal card permit and your 1980-81 I.D. card to the person issuing meal cards in the lobby of Drew and Holley Halls and get your meal card.
- Please present your meal card and I.D. to the checker in Alumni Hall at each meal.
- DO NOT LET ANOTHER STUDENT USE YOUR MEAL CARD.

II. POLICY ON LOST MEAL CARDS:

- Replacement meal cards may be obtained from the Food Service Office in Alumni Hall (Room 206) for a \$3.00 fee.
- Replacement I.D. cards may be obtained from the I.D. Office at a cost of \$8.00.

EACH STUDENT MUST HAVE A MEAL CARD IN ORDER TO EAT IN ALUMNI HALL.

Schwarz Inc.
"104 Years of Continuous Service"

COMPLETE DEPARTMENT STORE
and
FURNITURE STORE

It's a pleasure doing business with you

Tel. 826-2466 P. O. Box 535
Hempstead, Texas

Dining Hours

MONDAY-FRIDAY —
Breakfast 6:30-8:30
Lunch 11:00-1:30
Dinner 4:30-6:30

SATURDAY-SUNDAY:
Breakfast 8:00-9:00
Lunch 12:00-1:00
Dinner 5:00-6:00

Experiment Farm. The NASA scientists and staff will be pleased to answer your questions and describe the equipment. Here is another career for our Productive People at PVAMU.

must not apostate. Suffice to say, with a set goal, encompassed by a source all powerful, and a joy awaiting us, let us disregard the disgrace of the crosses that abase us, and march on till victory is won.

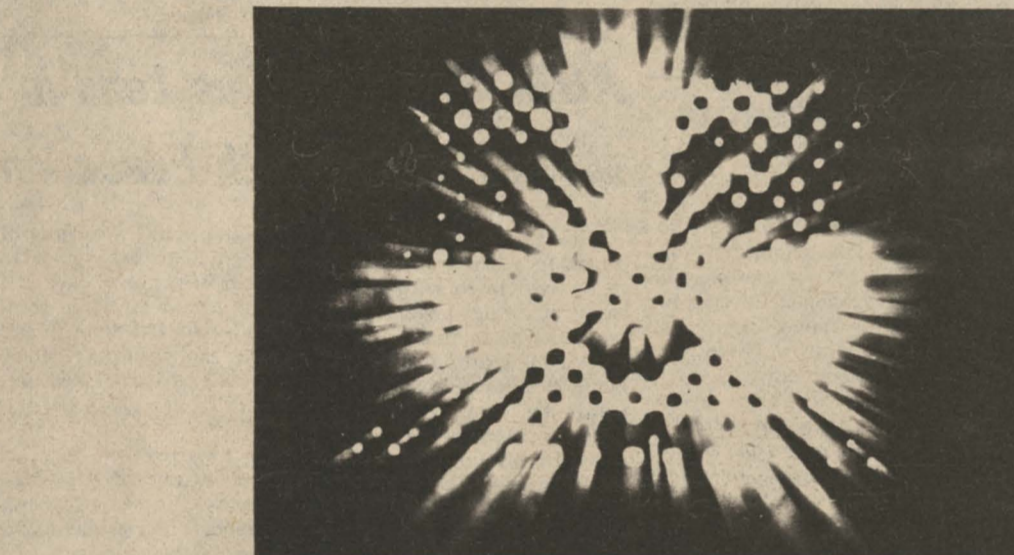
Finally, in the black tradition, let us pray: "God of our weary years, God of our silent tears, Thou who has brought us thus far on the way; Thou who has by Thy might, led us into the light, Keep us forever in the path we pray. Lest our feet stray from the places, our God, where we met Thee, Lest our hearts, drunk with the wine of the world, we forget Thee; shadowed beneath Thy hand, may we forever stand, True to our God, true to our native land."

HEMPSTEAD CLEANERS

DRY CLEANING
Alterations — Laundry Service

Phone 826-3798 Box 893
Hempstead, Texas

1-DAY DRY CLEANING SERVICE



COSMIC COALESCENCE

Where does science fiction end and reality begin? It's all in the mind's eye. Be it the creative imagination used to produce Star Wars, The Black Hole, and The Empire Strikes Back, or the more scientific approach of hypothesis testing and experimentation, the distant galaxies of science fiction coalesce into reality with the advanced technology now being developed at a company called TRW.

It was the Defense and Space Systems Group of TRW who made possible the Viking Lander biological experiment which looked for life on Mars and the High Energy Astronomical Observatory which looks for quasars, pulsars and black holes in deep space. Professionals at TRW-DSSG are now involved in such impressive technologies as high

energy lasers, communications systems, plus other future projects still considered science fiction.

A company called TRW will be on campus...

SEPTEMBER 24-27

to interview graduates in scientific and technical disciplines.

Contact the placement office to schedule your appointment. If unable to meet with us, send your resume to:

College Relations
Bldg. R5/B196 PV9/80
One Space Park
Redondo Beach, CA 90278

A Company Called **TRW**
Equal Opportunity Employer M/F/H

DEFENSE AND SPACE SYSTEMS GROUP
ENERGY SYSTEMS GROUP

"I'm doubling my chances for success."



Adding Army ROTC to your college education can double your chances too. Regardless of your chosen major, Army ROTC training magnifies your total learning experience.

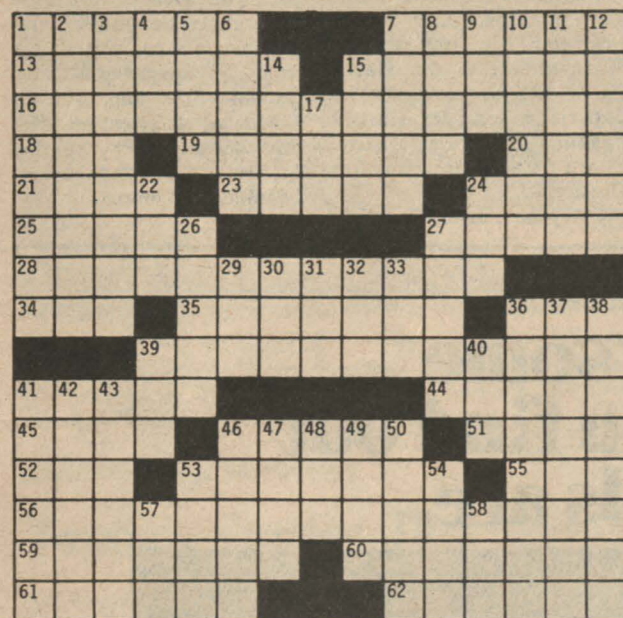
Training that helps you develop into a leader, as well as a manager of money and materials. It develops your self-confidence and decision-making abilities. And gives you the skills and knowledge you can use anywhere. In college. In the military. And in civilian life.

Army ROTC provides scholarship opportunities and financial assistance too. But, most importantly, Army ROTC lets you graduate with both a college degree and a commission in today's Army, including the Army Reserve and National Guard.

So come out ahead by enrolling in Army ROTC. For more information contact:

ARMY ROTC
DOUBLES YOUR CHANCES FOR SUCCESS.

collegiate crossword **Important!!!**



© Edward Julius Collegiate CW79-10

- ACROSS**
- 1 Garland for the head
 - 7 Shoe or accent
 - 13 Surf or thrill
 - 15 Shower activity
 - 16 Tige (3 wds.)
 - 18 Noshed
 - 19 Trained down
 - 20 Rater of m.p.g.
 - 21 French movie
 - 23 German steel center
 - 24 Gardener, at times
 - 25 Santa's reindeer, e.g.
 - 27 Peter and Moses
 - 28 Justifications for being (2 wds.)
 - 34 Guaidonian note
 - 35 Julie Christie film
 - 36 Neighbor of Mich.
 - 39 1895 automotive invention (2 wds.)
 - 41 Computer language
 - 44 Puccini opera
 - 45 Not an imitation (abbr.)
 - 46 Trite
 - 51 Goulash
 - 52 Actress Mary
 - 53 Jipijapa hats
- DOWN**
- 1 Tuna variety
 - 2 Maritime
 - 3 In — (without being present)
 - 4 American record label
 - 5 " — Tu," 1932 song
 - 6 Actress Oberon
 - 7 Elizabeth
 - 8 Irish novelist
 - 9 Sally or Ayn
 - 10 Wife of Saturn
 - 11 Evangelical society
 - 12 Sealed
 - 13 Actress Samantha, and family
 - 14 Baseball stats
 - 15 Suffix for two or three
 - 17 Hotel sign (abbr.)
 - 20 Some tech. graduates, for short
 - 24 Tint
 - 26 Subject
 - 27 U.S. or Lou
 - 29 Dora Copperfield
 - 30 Spentlow
 - 30 Baker and Beale (abbr.)
 - 31 Expected
 - 32 Pipe joint
 - 33 Gift for a man
 - 36 Flowering shrub
 - 37 In high dudgeon
 - 38 Ocean plants
 - 39 Understand, to some
 - 40 General offices: abbr.
 - 41 Believed
 - 42 Debt
 - 43 Yellowish brown
 - 46 Hank of baseball
 - 47 Fomicologist's specimens
 - 48 Close to: Scot.
 - 49 Vanderbilt and Carter
 - 50 Endures
 - 53 Colorless
 - 54 Something to put
 - 57 Mr. Byrnes
 - 58 Hockey great

REQUIRED FEES MUST BE PAID BEFORE SEPTEMBER 15, 1980

In order to remain in good standing at Prairie View A&M University, each student must have:

- 1. Authorization to Attend Class** — Faculty will not admit you to classes without a class attendance authorization card stamped "Fees Paid" by the Fiscal Office.
- 2. Authorization to Live in Residence Hall** — Senior Fellows are not authorized to permit you to live in the residence halls without a fee receipt for payment of all required fees.
- 3. Authorization for Meal Tickets to Alumni Hall** — Meal Tickets will not be issued to students who do not have fee receipt for fees paid.
- 4. Authorization to Live as a Day Student** — The Directors of Housing are not authorized to grant Day Student Status without a fee receipt for payment of all required fees.

ALL STUDENTS MUST PAY REQUIRED FEES PROMPTLY

- 1. Students who are Paying their Own Fees** — Pay

National Science Foundation — Post Doctoral Fellowships In Science Available

The National Research Council will advise the National Science Foundation in the selection of candidates for the Foundation's Postdoctoral Fellowships in Science Program. Panels of scientists and engineers appointed by the Research Council will evaluate applications of all candidates. Final selection of Fellows will be made by the Foundation, with awards to be announced in late February, 1981.

These fellowships are designed to provide postdoctoral research and study opportunities to a broader population of scientists by offering two tenure options: (1) Full-time

tenures for those who can arrange to devote all their effort to the conduct of a fellowship program; (2) Part-time tenures for those with family, financial, or such other obligations as may preclude their pursuit of a full-time fellowship program. Fifty or more full-time and part-time fellowships will be awarded for research and study in the mathematical, physical, biological, engineering, and social sciences, in the history and philosophy of science, and in interdisciplinary areas. Awards will not be made in clinical, education, or business fields, nor in history, social work, or public health.

Application may be made by persons who will have earned by the beginning of their fellowship tenures a doctoral degree in one of the fields of science listed above or have had research training and experience equivalent to that represented by a Ph.D. degree in one of those fields, and who will have held the doctorate for no more than five years as of November 3, 1980. All applicants must be citizens of the United States, and will be judged on the basis of ability.

The basic stipend for full-time Postdoctoral Fellows is \$1,150 per month; \$575 per month for half-time Fellows. A limited travel allowance is also provided. In addition, the National Science Foundation will provide the fellowship institution, upon request, with a cost-of-education allowance the institution in meeting the cost of tuition and fees, and in providing the Fellow with space, supplies, and equipment. Fellows are also provided a single special allowance of \$300 to aid in defraying costs associated with their research. No dependency allowance is available.

The deadline date for the submission of applications is November 3, 1980. Further information and application materials may be obtained from the Fellowship Office, National Research Council, 2101 Constitution Avenue, Washington, D. C. 20418.

required fees before September 15, 1980 — Contact parents if necessary.

- 2. Students on Financial Aid** — Pay required fees before September 15, 1980 — Contact Mr. A. D. James, Financial Aid Office, if necessary.

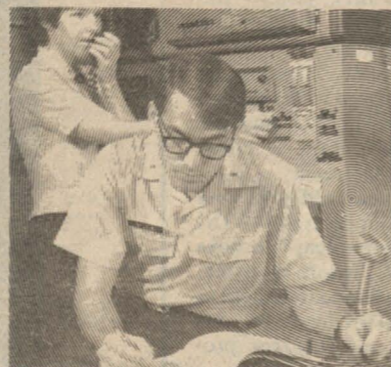
Announcing . . . CENTURY TWO BOOK REVIEW SALLY HEMINGS

by Barbara Chase-Riboud

Reviewed By Dr. June H. Brewer

Wednesday Evening, Oct. 29, 1980 at 6:00 o'clock President's Campus Residence

PUT YOUR SCIENTIFIC OR ENGINEERING DEGREE TO WORK



If you're a degree candidate who would like to embark on a future-oriented scientific or engineering career, then consider the United States Air Force. It's one of the finest opportunities in the nation. Completion of our three month Officer Training School nets you an officer's commission and launches you into a career that's geared for tomorrow. Our equipment is among the finest, our working conditions are excellent, and our benefits package unmatched. Find out about a space age service from your nearest Air Force recruiter.



SSGT. RONALD HAMILTON
U. S. Air Force
707 University Dr.
College Station, Tx 77840
(713) 846-6790 (Collect)

ENGINEERING GRADUATES

Opportunity and challenge are only two of the benefits of a career at Illinois Power Company. We are a progressive electric/gas utility with openings in the following areas:

- DATA PROCESSING
- OPERATIONS
- POWER PRODUCTION
- SYSTEM DESIGN
- SYSTEM PLANNING

If your degree is B.S. or M.S. Electrical Engineering we would like to talk with you on 9/25/80. Please sign up to talk to:

LARRY L. JOHNSON

or forward your resume to:

ILLINOIS POWER COMPANY

500 South 27th Street
Decatur, Illinois 62525

An Equal Opportunity Employer
Male/Female



JULIE GRICE

Outstanding Experiment-In-Living Student

Julie Grace, a graduate of Jack Yates High School of Houston. Julie is now an active member of the Experiment-In-Living Program, where she hold the office of assistant secretary. Julie considers herself as a well-rounded person.

During her senior year in high school, she took interest in community affairs as well as school activities. She has donated her time to the "Cerebral Palsy Telethon," "The United Negro College Fund," and she has also attended Channel 13, the television talk show "Turn on" where she discussed "Vandals in Schools."

Miss Grace was involved in many activities whole in high school. Julie was a member of the National Honor Society, the Student Press Vice-President of the Girls' Senate, "Close-Up" — an organization designed for high school students to get a closer look at government in action, and her high school choir. Julie was a member of the Yates Forensic Club, headed by Ms. Sandra Shelton. As a member of the club, she competed in various tournaments. She participated in Poetry Interpretation as a Readers' Theatre. She went to U.I.L. in Poetry Interpretation as a finalist. During her participation in the club, the club received over 200 ribbons, trophies, plaques and medals. Julie was also one of Jack Yates half-time announcers.

During her academic career at Yates High School, she received a number of awards. She was named, "Most Outstanding Half-Time Announcer." She was a nominee for "Who's Who in American High Schools" and she also received the Board of Education Award, "Most Outstanding Senior Young Lady in the Class of 1980."

Julie plans consist of attending Prairie View, majoring in Nursing. Miss Grace received an AROTC Scholar's Award, where she will be a part of the program. Miss Grace has set her goals to be on the Dean's List every semester.

Miss Grace's future plans are to begin her clinical nursing in Houston, where she hopes to become a Registered Nurse someday. Doing her best in aiding as many people as possible, is her highest aim.

Of the nine million living armed forces veterans who served during the Vietnam Era, 32 percent had duty in the Vietnam theatre of operations.

Jackson State Wins Cross Country Race

Defending Southwestern Athletic Conference champion Michael Watson paced Jackson State to a 1-2-3- finish and an easy 18-41 cross-country victory over Prairie View Friday

morning on the Prairie View course. Watson, who has won the top spot in the conference meet — the last two seasons, covered the three-mile distance in 15:48. Robert Wilson and Allen Poole, both of Jackson were second and third in 16:19 and 16:32 respectively.

The top Prairie View runner was freshman Marvin Miller, finishing fourth in a time of 16:42.

THE RESULTS

1. Michael Watson, Jackson, 15:48;
2. Robert Wilson, Jackson, 16:19;
3. Allen Poole, Jackson, 16:32;
4. Marvin Miller, Prairie View, 16:42;
5. Napoleon Hooks, Jackson, 17:01;
6. Kelvin Hill, Prairie View, 17:05;
7. Anthony Appoy, Jackson, 17:07;
8. Clifford Bedgood, Jackson, 17:30;
9. Mel Trahan, Prairie View, 17:31;
10. Mark Roy, Prairie View; 17:38;
11. Jessie

Goodloe, Jackson, 17:52; 12. James Stewart, Prairie View, 18:57; 13. Keith Lundy, Prairie View, 19:31; 14. Alfred Hurd, Prairie View, 19:32; 15. Victor Williams, Prairie View, 20:06; 16. Clifford Boyce, Prairie View, 20:29.

Even if you never knew anything else about Thomas Edison, you would have to be astonished by the simple fact that he averaged one new patent every two weeks of his grownup life.

1980 Watercolor Art Society TRAVELING EXHIBIT Will Be On Campus SEPT. 15-30 LOBBY W. R. Banks Library

When you need big favors you ask good friends.



When you ask good friends for a favor, you know what they're going to say. So you tell them you're moving again and then wait for the groans to stop. They may not like the idea, but you know they're going to be there. When you're finished, these people are going to deserve something special. Tonight, let it be Löwenbräu.



Löwenbräu. Here's to good friends.

© 1980 Beer brewed in U.S.A. by Miller Brewing Company, Milwaukee, Wisconsin

Support The Panthers



PRAIRIE VIEW A&M UNIVERSITY
EMPLOYEES FEDERAL

credit union

P. O. BOX 2606
PRAIRIE VIEW, TEXAS 77445

A Service to The Prairie View Community for Over Forty Two Years

- LOANS: Share Secured 10% Annual Percentage Rate
- Real Estate 12% Annual Percentage Rate
- Personal 15% Annual Percentage Rate
- SHARES: (Savings) 7% Annual Percentage Rate

OUR MOTTO: "Not for Profit
Not for Charity
But for Service"

OFFICE HOURS: Monday thru Friday 3:30-6:30 p.m.

PHONE: (713/ 857-4925)

OFFICE LOCATION: P. V. Alumni House



CAMPING PROGRAM — Softball was part of the action during the Extension Service's annual camping program held during summer months.

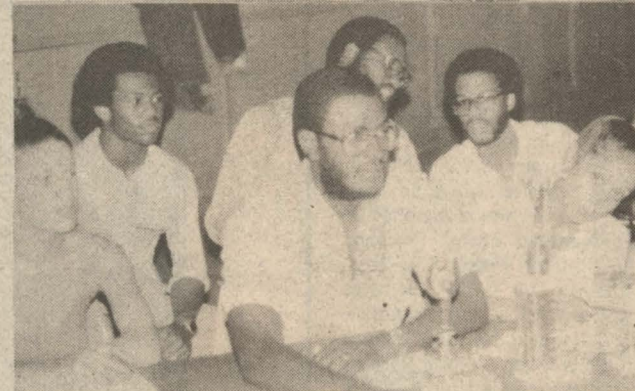
Grad Fellowships In Engineering Available

Ninety (90) fellowships will be awarded to minority students for 1981 by the National Consortium for Graduate Degrees for Minorities in Engineering, Inc. (GEM). The Consortium, organized in 1976, is a joint venture of thirty (30) engineering colleges and thirty (30) engineering employers that have joined together to provide opportunities for minority students to pursue master's degrees in engineering.

Candidates for participation in this program are selected from the following American citizens who are underrepresented in engineering: American Indians, Black Americans, Mexican Americans, and Puerto Ricans. The minimum academic junior or senior year of undergraduate study in one of the engineering disciplines. Those recently graduated are also encouraged to apply. An applicant's record must indicate the ability to pursue graduate studies in engineering.

Each fellowship pays tuition and fees plus a stipend of \$4,000 for the academic year and provides summer engineering employment at an employer member's laboratory.

The deadline for application material for consideration for summer, 1981 is December 1, 1980. For further information and application materials contact: Howard G. Adams, Executive Director, GEM, P. O. Box 537, Notre Dame, IN 46556.



TALENT SHOW WINNERS in Alpha Phi Alpha Talent Show held during late summer. Lennell Walker receives trophy from Quinn Jenkins in top photo. Contest judges are pictured above.

Ten Top Goodies

Relax your mind with some mellow tunes, that are inspiring and pleasing to the listening ear. Gently, concentrate on the rhythm and you will feel the music flow.

1. Upside Down — Diana Ross
2. Shake Your Pants — Cameo
3. Old Fashion Girl — Commodores
4. One In A Million, You — Larry Graham
5. Give Me The Night — George Benson
6. Jamaica Funk — Tom Brown
7. Take Your Time — S.O.S. Band
8. You Move Like Dynamite — Stacy Lattisaw
9. Backstrokin' — Fatback Band
10. Shining Star — Manhattans

Letter of Thanks

I wish to thank my many friends at Prairie View A & M University and surrounding towns who made my burden lighter during the death of my mother Maria A. Fortes. Your care for me and my family was keenly felt through the medium of personal calls, phone calls, telegrams, flowers, cards and many other acts of kindness. A very "special" thank to Father Frank Fallon of St. Martin De Porres Church.

Julia Owens

| | |
|-----------|--------------|
| ANADIM | BROGUE |
| LABORER | SOAPING |
| BUSTER | BROWNSDOP |
| ATE | SLIMMED |
| CINE | ESSEN |
| OCTET | GUNNS |
| RAISONS | DETRE |
| ELA | PETULIA |
| BASIC | DIESELENGINE |
| BASIC | TOSCA |
| ORIG | BANAL |
| URE | PANAMAS |
| GENEAUTRY | SHORSE |
| HANDLES | STORTED |
| TRADER | STRADS |

GUARANTY BOND STATE BANK
MEMBER F. D. I. C.
Waller, Texas

PV STUDENTS
ARE WELCOME AT
VARIETY VALUES
13th and Austin
HEMPSTEAD, TEXAS

Patricia's Fine Jewelry
Hempstead 1216 Austin
WE DO REMOUNTING AND
MANUFACTURING ON PREMISES
BULOVA and SEIKO WATCHES

24-HOUR SELF SERVICE
at
HEMPSTEAD WASHATERIA
TOP LOADING SPEED QUEEN
and
DOUBLE-LOAD PHILCO BENDIX MACHINES
Next Door to Pick & Pay Food Market
Hempstead, Texas
YOUR PATRONAGE APPRECIATED

It's All In You

by H. Ratcliff

Day by Day, its all in you
You are unique reveal Your tenderness
Let it fill your life with happiness
Smile that smile, that ease someone's troubles
And softly speak kind words of inspiration.
On and On, its all in you
Be a friend to those seeking comfort
Show you care with a sweet expression
Life is full of trials and tribulations
So be sincere to others with a heart of compassion.
Within Your Eyes, its all in you
Take time to love others in a sentimental way
With respect and appreciation everyday.

Eva & Arnold's Restaurant Club & Disco

FISH, PORK CHOPS, CHICKEN,
REAL PIT BAR-B-CUE
10% DISCOUNT ALL STUDENTS WITH ID CARD
DISCO — Friday and Saturday Night
8:30 until 2:00
Hwy. 290 - 2 miles East of PV
Tel. 372-9636 Waller, Texas
HOT LUNCHES DAILY

ZIPPY'S DRIVE INN

YOUR DISCOUNT AND CONVENIENCE STORE

"GAS" Available 857-3478
Prairie View, Tx. PV-Waller Rd.

FORD

Come see our fine selection of
of
Ford and Mercury Products

HEMPSTEAD FORD-MERCURY, INC.
HEMPSTEAD, TEXAS
SUPPORTING THE PANTHERS

"I'm an EE who found a career at DuPont"

Walter Fields BS, Electrical Engineering



"When I graduated from Vanderbilt, I joined DuPont mainly because my sights were set on a career, not just a job. And that's the way it's working out."

"My first assignment was as a member of the design engineering staff at our Nashville plant, working on projects to upgrade some of the older facilities and equipment."

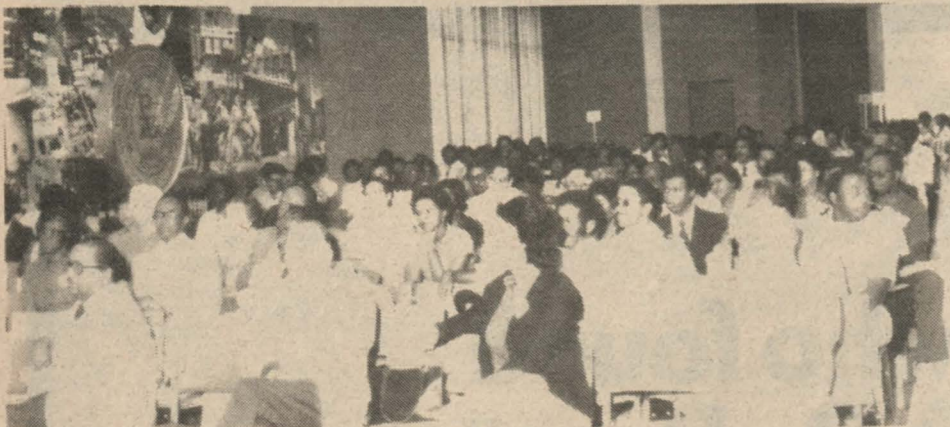
"One of my favorite assignments was designing and supervising the installation of new equipment to calibrate turbine flowmeters, which are critical to process control."

"These varied experiences have led to promotion to Process Engineer in the yarn process area. Where else could an EE get the kinds of job satisfaction I've found with DuPont? I plan to go for my MBA to supplement my growing on-the-job technical experience."

If you want your work to be something special, check out DuPont. Set up an interview when our representative is on campus Sept. 25, 26. Or write: DuPont Co., Rm. 37757, Wilmington, DE 19898.

At DuPont...there's a world of things you can do something about.





FACULTY-STAFF CONFERENCE — A view showing part of the group of staff members attending annual renewal sessions.

Six PV Students Intern in Chicago

Six Prairie View A&M students recently completed a three-month internship program with subsidiaries of Chicago-based Peoples Energy Corporation.

The students participated in the diversified energy company's annual summer intern program which has provided college students with career experience for several years. A total of 58 students from 30 different colleges participated in the program.

Two students, both Chicago residents, worked for The Peoples Gas Light and Coke Company, the Chicago utility subsidiary of Peoples Energy.

Anthony White, South Merrill Ave., was in the company's North Distribution facility. White, a senior, is majoring in mechanical engineering. Michael Newman, South Greenwood Ave., completed his internship in Peoples Gas Light's Technical Training and Services department. Newman, a senior, is majoring in electrical engineering.

The four students who worked for Natural Gas Pipeline Company of America, Peoples Energy's interstate transmission subsidiary, are from Texas. Houston residents Peter Simien, Jr. and Whitney Lastrap, both seniors, worked in the Transmission Department in Texarkana and Lufkin, Texas, respectively. Charles Ross, Lubbock, a junior, completed his internship in the Corrosion department in Frith, Texas, and Shanterial Hopwood, Texarkana, a senior worked in the Construction department in the Chicago office. All four are mechanical engineering majors.

Peoples Energy is the parent firm for eight operating companies which produce, deliver, and sell three primary forms of energy: natural gas, oil, and coal.

An Addition to Minifacts About Black Texans: Robert Lloyd Smith — "Adopted Texan and Prairie View Man"

Purvis M. Carter
A recently released document, "Juneteenth, 1980, in Search of Dignity Minifacts About Black Texans" is a genuine keepsake. And the omission of Robert Lloyd Smith, 1861-1942, an adopted Texan and Prairie Viewite, an epitome of initiative, an aggressive and a vigorous industrialist, educator, insurance executive, banker, legislator and law enforcer, is not, in anyway, an embarrassing action. Some of the scholarly studies, published as recently as 1971, either exclude that biographical information or they include scanty and questionable interpretations which lack some of the better primary data.

the list, Minifacts about Black Texans.

After arriving in Oakland, Texas, Smith, through the help of faithful supporters, established the Oakland Village Improvement Society. That organization was instrumental in establishing the Oakland Village Improvement Society School. Through the school and the Society not a few Blacks secured their initial formal education, purchased land and built and/or improved homes. In 1890 the Oakland Village Improvement Society was enlarged forming the Farmers' Improvement Society with chapters established, eventually, throughout rural oriented Texas as well as in Arkansas and Louisiana. The headquarters of the Farmers' Improvement Society was located in Waco, Texas in 1890 and the organization was chartered in 1901. A visit to the McClellan County Courthouse and a review of the tax records there substantiated that relevant facets of that Waco, Texas action did transpire.

Robert Lloyd Smith was one of the first State leaders in the Prairie View Extension Service. Toiling in the Lone Star State for fifty-seven of his eighty-one years of life, Smith was born in Charleston, South Carolina January 7, 1861 to free Black parents, Francis A. and Mary H. Talbot Smith. He secured his formal education through one of the Freedom Bureau schools, where his mother taught, Avery Institute, Charleston, and the University of South Carolina. Concerned about the validity of a Smith manuscript revealing that he had attended the University of South Carolina, an inquiry was sent to the University of South Carolina Registrar about the statement. The reply was that Robert Lloyd Smith had indeed attended the University of South Carolina, 1875-1877. When President Rutherford B. Hayes agreed to the withdrawal of United States troops from South Carolina, Louisiana and Florida, a partial provisions of the Compromise of 1877, Smith ventured to Atlanta University, Atlanta, Georgia. He received the A. B. degree with major concentration in English and Mathematics from Atlanta University in 1880. During the next five years he, among other things, was involved in the teaching profession in Georgia.

revealed that Mrs. Moses was still active in the insurance work of the Society.

When Texas was in the process of utilizing the poll tax and the Texas Democratic Primary to eliminate and/or minimize the Black vote in the state, and eighteen years after military enforced Reconstruction had ended in 1877, Robert Lloyd Smith was elected to the Texas legislature in 1895 and in 1897 from the Colorado County area where Blacks were not in the majority. Smith was also appointed United States Deputy Marshall, Paris, Texas, 1902-1909.

To have the opportunity to know rather intimately the life of Robert Lloyd Smith, of his capabilities and his adroitness, is a privilege which is too frequently denied us by the scarcity or inadequacy of published records. He reminds us once more that the history of a people, state and/or nation is to be found not only in the records of victorious battles or in the lives of the notable personages but also in the lives of the most humbly born, the most consistently despised and the miserably improvident.

One will readily admit that the concern must be about now, the present. But one might likewise wonder if knowledge of the past can serve as a basis for promoting appreciation of the present. One might wonder if knowledge of the past can serve as guidelines for planning.

When the centenarian was asked the secret of his long life, he replied, "When I work, I work easy. When I sit, I sit loose. When I start to worry, I go to sleep."

In 1885 Smith arrived in Oakland, Colorado County, Texas. He spent the remaining fifty-seven years of his life laboring in Texas. A hasty review of accomplishments that were prompted through his leadership in Texas between 1885, the year of his arrival in Oakland, and 1942, the year of his death, might provide some justification for including his name among those comprising

BRANNAN'S SUPERMARKET

MEATS OF QUALITY

372-3639
220 Cherry Waller

CITIZENS STATE BANK

MEMBER F. D. I. C.

P. O. Box 575 Phone 826-2431
HEMPSTEAD, TEXAS

Tinsley's Chicken and Rolls

TINSLEY'S BOSS BIRD

Hempstead, Texas

A&M System Takes Lead

CONTINUED from Page 4

tests for doctors — has begun at All Saint's Episcopal Hospital in Fort Worth, program headquarters.

Johanson said 33 students have completed the 40-hour-a-week classroom and laboratory work and that 17 more are either midway through the program or have just started.

The year in Fort Worth is the culmination of an additional 90 hours of classroom credits required to enter the med-tech program.

"We are on the threshold of serving a critical need in the Metroplex as well as those rural areas west of the urban center," said Johanson.

All three universities engage in active preparation programs for prospective medical, dental, veterinary and nursing students.

However, Prairie View A&M has tailored its program to meeting one of the most pressing needs among medical progressions today, the desire for qualified minority applicants.

"We want to train about 30 students a year who can walk off the Prairie View campus and attend anybody's college of medicine anywhere," Dr. A. I. Thomas, Prairie View A&M president, said.

PV Baseball Prospects Are Looking Good

Coach John Tankersly starts his fall baseball campaign September 20. Returning are 19

Testing Dates—

CONTINUED from Page 2

tions, as well as a registration form. Copies may be obtained from college placement officers, school personnel departments, or directly from National Teacher Examinations, Box 911, Educational Testing Service, Princeton, New Jersey 08541.

Cross Country Team Will Be Brand New

by Henry Hawkins

Coach Hoover Wright's assessment of the 1980 Cross Country team was quick and to the point.

"We'll be brand new," he stated. "This is strictly a rebuilding year with a lot of new faces."

The leading returnee and only letterman returning for the Panthers is Lake Charles, La. sophomore Mark Roy. There are two other sophomores and one senior but five freshmen that Coach Wright will be banking on this fall.

Roy finished 17th in last year's Southwestern Athletic Cross-Country meet, but he was the first Prairie View runner to cross the finish line.

Kelvin Hill, a sophomore from Dallas, was the No. 2 Prairie View runner in the conference meet.

An that's basically the bulk of the cross-country experience that coach Wright has to open the season Friday in a dual against Jackson State.

Two other upperclassmen he'll be counting on are Ray Roberts, a senior from Houston and Tony Curry, a sophomore from Dallas, Texas. Both ran distance races in the spring and Wright is expecting them to carry enthusiasm and leadership for the young runners throughout this season.

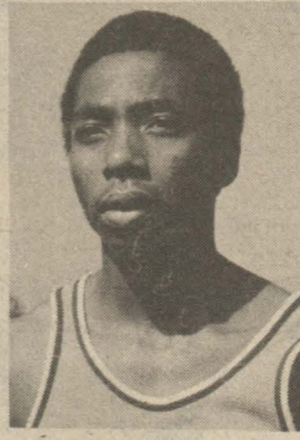
Tops among the freshmen is Marvin Miller, from New Orleans, La. "He's got some good high school credentials

lettermen including All Conference Charles Hudson, Alfonso Gomez and Kenneth Jones.

Coach Tankersly predicts this should be one of the best years he has ever had at Prairie View. They should improve on last year's 23-10 record.

Newcomers on the PV roster to watch are: D. E. Irwin, Pitcher; Eugene Small, Pitcher; Gilbert Villarreal, Pitcher; Craig Maura, Outfield; Lawrence Allen, Center Field.

The season is to start February 21, 1981.



MARK ROY

and hopefully he'll be able to make some good college credentials before he leaves Prairie View," Wright said.

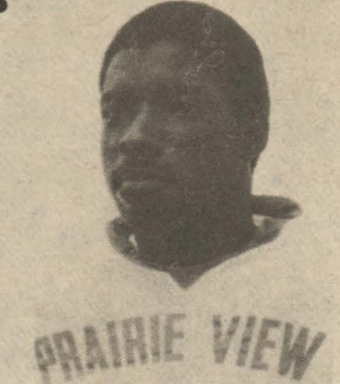
Panthers Lose Grid Opener SW Texas Bobcats Prevald 49-0

Cornelius Cooper had his debut as the Prairie View head football coach spoiled by a three-touchdown performance by Stanley Buton and a stifling Southwest Texas defense in a 49-0 loss to the Bobcats at Northside Stadium Saturday night.

"Needless to say I'm disappointed in the way we played," Cooper said. "We didn't execute too well. We played like we were flat."

Buton scored two of the Bobcats first three touchdowns on plunges of one-yard. He later added a six-yard touchdown in the third quarter. Jimmy Fife added two more touchdowns for the Bobcats.

Meanwhile Southwest Texas' defense was limiting Prairie



ROBERT ALEXANDER

View to 62 yards total offense, 40 on the ground. The defense also didn't let the Panthers pass the 50-yard line all night.

Cooper didn't pinpoint any individual standouts after the season-opening loss but Robert Alexander stood out in the statistics. The senior cornerback

had two pass interceptions, knocked down two more passes and was in on six tackles.

Both interceptions were deep in Panther territory stopping Bobcat drives.

Senior linebacker Kevin Sullivan last years leading Panther tackler, shared those honors for the game with senior cornerback Andrew Winzer. Both were in on seven stops with Alexander and freshman linebacker Kenneth Jackson right behind with six tackles each.

The Panthers take the week off then step right into conference warfare traveling to Jackson, Mississippi September 20. Another conference road game follows, September 27 with Prairie View playing at Southern then the first of four games slated for Blackshear Field on October 4 as Prairie View hosts Grambling.

E-Systems continues the tradition of the world's great problem solvers.

Recognized with Archimedes and Newton as one of the three greatest mathematicians, Karl Gauss also pioneered math in astronomy, gravitation, electricity and magnetism.

E-Systems engineers are continuing in his footsteps today. They are pioneering technology and solving some of the world's toughest problems in electronic transmission and signal-reception in an interference and noise background using basic Gaussian concepts.

E-Systems "pioneering" in communications, data, antenna, intelligence and reconnaissance projects results in systems that are often the first-of-a-kind in the world.

For a reprint of the Gauss illustration and information on career opportunities with E-Systems in Texas, Florida, Indiana, Utah or Virginia, write:

Lloyd K. Lauderdale, V.P. — Research and Engineering, E-Systems, Corporate Headquarters, P.O. Box 226030, Dallas, Texas 75266.



Karl F. Gauss

EYPHKA! $\sum_{n=1}^m n = \frac{m+1}{2} m$

Karl Friedrich Gauss 1777-1855



Dear Friends:

As a special sales representative for Lawrence Marshall Chevy-Olds I can offer you and your friends great deals on new or used cars and trucks.

Please call or come by and ask for me.

Thank you,
TIM LEWIS

CHEVROLET

LAWRENCE MARSHALL CHEVROLET-OLDS, INC.

P. O. Box 983 — Hempstead

HEMPSTEAD 826-2411

HOUSTON 463-8484