

Prairie View A&M University

Digital Commons @PVAMU

PV Standard Newspapers

Publications

1-1963

The Prairie View Standard - January 1963 - Vol. LIII No. 4

Prairie View Agricultural and Mechanical College of Texas

Follow this and additional works at: <https://digitalcommons.pvamu.edu/pv-newspapers>

Recommended Citation

Prairie View Agricultural and Mechanical College of Texas. (1963). The Prairie View Standard - January 1963 - Vol. LIII No. 4., *Vol. LIII No. 4* Retrieved from <https://digitalcommons.pvamu.edu/pv-newspapers/229>

This Book is brought to you for free and open access by the Publications at Digital Commons @PVAMU. It has been accepted for inclusion in PV Standard Newspapers by an authorized administrator of Digital Commons @PVAMU. For more information, please contact hvkoshy@pvamu.edu.

THE PRAIRIE VIEW STANDARD

VOL. 53

Prairie View A. & M. College, Prairie View Branch, Hempstead, Texas, January 1963

NUMBER FOUR

President Evans Cited for Service To Education By TSTA

Dr. E. B. Evans, Prairie View A. and M. College's president, has been cited for service to education by the Teachers State Association of Texas.

The veteran Texas educator was awarded a plaque with the words "for service to education" inscribed during the association's annual meeting in Dallas. Dr. Evans has been employed at Prairie View since 1918 and has been president since 1946.

Long associated with the state teachers group, Dr. Evans continues to serve the organization and encourages his faculty to work closely with their state and regional programs. A large percentage of Prairie View teachers hold membership in the association and many contribute their services as consultants and speakers.

In addition to his many associations and services to education in Texas, the Prairie View president is currently a member of the American Council on Education's commission on education and commission on international affairs; the state department's committee in charge of programs of international relation; and the U. S. Department of Agriculture's national committees on rural areas development, vocational education, and international cooperation.



TWENTY-FIVE-YEAR SERVICE AWARDS . . . Miss Dorothy I. Burdine, elementary education professor, and Dr. J. M. Coruthers, professor of agriculture, are pictured with Twenty-five-Year Service Certificates awarded to them at the annual Faculty Banquet held in December.

Construction of Building to Start Soon

President E. B. Evans announced this week that bids will be taken this month for construction of the long-awaited Health and Physical Education building. The ultra-modern structure is expected to cost around \$1 1/2 million.

The approved architectural design shows the proposed building to be of circular form which is said to be in keeping with modern field house construction. The structure will seat nearly 6000 persons.

Negotiations on the building

started about three years ago. The first design submitted was a rectangular arrangement and costs exceeded funds available for the project. The new design includes all of the original appointments for the building, and it is hoped it can be built within the range of funds allocated.

Construction of the building, which will be located adjoining the present gymnasium, should begin very shortly after bids have been opened.

National Science Foundation Summer Programs Scheduled

Grants Total Nearly \$54,000

Prairie View A. and M. College has received grants in the amount of \$37,000 for a summer institute for teachers, and \$16,625 to conduct a summer science training program for talented high school students, Dr. E. B. Evans, Prairie View's president, announced.

This will be the fourth summer institute sponsored by the Foundation and conducted by the department of Natural Sciences at the College. The institute will cover a six-week period beginning June 2.

The main objective of the institute will be to improve the subject matter competence of science teachers. In addition to regular class room work, a great deal of interest will be placed on current developments in the field of science. Several outstanding lecturers on national and international levels will be presented to the group during the six weeks period.

Participating teachers will receive stipends of \$75.00 per week, plus dependency allowance, tuition and travel. Applications may be obtained by writing the director, Dr. E. E. O'Banion, head of the department of Natural Science.

Fifty talented high school students will be selected to attend the special program which is scheduled

(Continued on Page 3)

Texas Ranchers Contribute Registered Angus Cattle to PV for Foundation Herd

Due to the interest of the leading Angus breeders in the state, Prairie View A. and M. College now has for the first time representatives of the major breeds of beef

cattle on its campus for use in its instructional program.

Six young registered Angus females have been delivered to the College as the beginning of a foundation herd. A bull will be delivered by another breeder when the heifers become of age to breed.

This long felt need of the College was finally made possible when Rufus R. Peeples, owner and manager of Bluff Valley Farm in Tehuacana, was contacted by Dr. Kate Adele Hill, a member of the State Extension Service staff, who learned about the need while serving as an instructor in a special extension course offered at Prairie View last summer.

Dr. Hill explained the urgency of Prairie View's need to Mr. Peeples, a long time friend of the College, and the fact that the College had no state or local funds with which to purchase a foundation herd of Angus cattle. Dr. Hill's parents and grand parents had been among the few early Angus breeders in the state with outstanding cattle. She knew the importance of this type of training

for Prairie View's students of Agriculture.

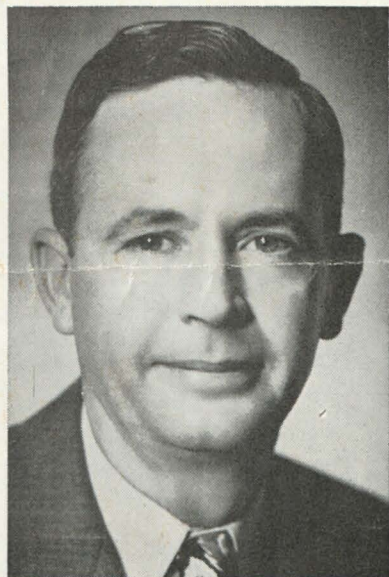
Mr. Peeples took the situation into his hands, contributing himself and contacting fellow breeders, and the response was excellent.

Others who have already contributed to this foundation herd include S. David Ramsey, owner of Ramsey's 777 Ranch, located at Driftwood, near Austin; G. A. Creswell, owner of Creswell Ranches located in Coleman and Callahan counties; George W. Graham, owner of Graham's 77 Ranch located 4 miles East of Wichita Falls; Kenneth Craver, owner of Craver Ranch, located seven miles northeast of Denton; and Mr. and Mrs. William and Ruby Clark, owners of Clark's

Angus Ranch, 15 miles northeast of Huntsville.

The registered heifers contributed are all young, ranging in age from about eight to ten months. They come from six different ranches located through the central part of the state from north to south and representing some of the best breeding in the state.

In addition to making numerous contacts with fellow breeders, Mr. Peeples made all the arrangements for the College to pick up the cattle and handled other details such as transfer of registration to the department of Animal Husbandry at the College. The trip around to the various ranches amounted to about 1,000 miles.



RUFUS R. PEEPLES
Friend of Prairie View—education, agriculture, rural community development.

P. V. ROTC Cadet Ex's Excell

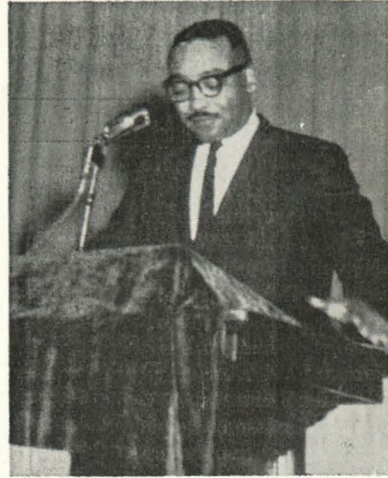
Two May 1962 ROTC graduates have attained academic rankings in the upper-third grouping of officers completing their respective Army Service School officer orientation courses.

They are Second Lieutenants

M. Williams of Fort Worth, and Sanderson A. Woods of Prairie View. Lt. Williams is currently assigned to duty with the 29th Evacuation Hospital at Fort Devens, Mass. Lt. Woods is now stationed in the Far East.



PHYSICS LECTURER . . .
Dr. Elizabeth A. Wood is a physicist at Bell Telephone Laboratories in New Jersey.



AUTHOR, NEWSMAN . . .
Louis Lomax of New York, keynoted English Emphasis Week observance.

AKA Sorority Presents 30 Debs

Approximately 30 young ladies will be presented by the Zeta Omega Chapter of Alpha Kappa Alpha Sorority on January 19. The annual presentation of debutantes and the following formal ball are scheduled to begin at 8:00 p.m. in the college gymnasium.

Debs to be presented include Misses Alma J. Anderson, sophomore, business major of Prairie View, Texas; Gloria C. Anderson, freshman, business education major of Prairie View; Eula Bennett, freshman, English major of Prairie View; Gwendolyn Bowie, freshman medical technology major from Houston; Barbara Brown, junior in Nursing from Fort Worth; Frances A. Bryson, freshman sociology major from Florence, Alabama; Rose Bostick, senior in Nursing Education from Brookshire; Shirley Demus, senior Business major from Dallas; Alberta English, sophomore, Biology major from Houston; Geraldine Gupton, sophomore, Business Education major from Henderson.

Lovie Marie Hall, sophomore, mathematics major from Huntsville; Constance R. Kelley, sophomore in music from Cameron; Theodora Lawson, freshman in Nursing from Prairie View; Patricia Lawrence, freshman English major of Dallas; Gloria Ann Lee, junior English major from Ennis; Stevia Alexis Neal, sophomore in Dietetics from Wichita Falls; Celestial Nesbitt, sophomore in Home Economics from Wichita, Kansas.

Betti R. Poindexter, freshman in Architectural Engineering of Prairie View; Majory Simmons, junior Business Education major from Markham, Texas; Jere Lynette Steverson, freshman in Business Education from Houston; Mattie Thomas, junior in Music from Chappell Hill; Sandra Thompson, sophomore English major from Willis, Texas; Warnell Tisdale, sophomore majoring in Secretarial Science from Wharton; Carol E. Walker, sophomore in Secondary Education from San Antonio.

Also Billie J. West, sophomore English major from Tyler; Alva Raye White, sophomore pre-medicine major from Houston; Mary Joyce White, sophomore in Elementary Education from Temple; Archie M. E. Williams, sophomore Mathematics major from Leggett; Doris Jean Williams, sophomore in Home Economics from Garwood; and Henriene Woods, sophomore in Mathematics of Prairie View.

"Y" LEADERSHIP INSTITUTE
Principal speakers included Dr. E. B. Evans; the Reverend Robert E. Hayes, Trinity Methodist Church, Houston; Barbara Bisor, YWCA President; and Travis Dehorney, YMCA President.



HUNDREDS OF HIGH SCHOOL YOUTH ATTENDED THE 3-DAY ANNUAL CONFERENCE . . . Group pictured was only one section of the huge gathering of "Y" leaders from Texas and the Southwest.

ALUMNI NEWS

J. L. Patton is Honored
By Dallas Citizens

Principal J. L. Patton Jr., Booker T. Washington High School, Dallas, Texas, was honored at a testimonial banquet at Dallas Memorial Auditorium on December 14. He was recognized for his professional and social services to the city.

The Prairie View graduate has been with the Dallas public schools for 34 years and has been principal at Booker T. Washington 23 years. He has conducted fund raising campaigns for such organizations as the Community Chest, YMCA, Boy Scouts of America, the National Foundation's March of Dimes, and the United Negro College Fund.

San Diego-PV Club
Sets Scholarship Fund

The San Diego Prairie View Alumni and Ex-Students Club is raising funds on a scholarship project which will be announced soon.

Local Alumni Club
Plans Faculty Talent Show

The Local Prairie View Alumni Club will present its annual Faculty Talent Revue early in February. James O. Sullivan, program director at the Memorial Center, is directing the show.

J. C. Brown Jr. (1958) Named
District Scout Executive

J. C. Brown Jr. (Class of '58) has been appointed District Scout Executive in the East Texas Area Council, Tyler, Texas. Mr. Brown will have his headquarters at Lufkin, Texas, and will also serve as assistant adviser to the urban relations committee. A physical education major, Brown is married and has two children.

Briefs

STOCKTON, CALIF. — Mrs. Dora Malone Daniels is a fourth grade teacher in Stockton, California. Her address is 1617 East 17th Street.

ANN ARBOR, MICHIGAN — The T. S. Harrison's (1939), 547 Detroit Street, Ann Arbor, Michigan, have two teenagers participating in the Teen-age Exchange Program (participating as a member of a family in another country). Tommy's foster family is in Nykøbing Falster, Denmark; and Irma's is in Stolberg, Germany.

Deaths

SAN JOSE, CALIF. — Georgia Bell Thomas, leader in the California Democratic Council and assistant professor at San Jose State College, died at the age of 32.

NACOGDOCHES, TEXAS — Mrs. Mary Shepherd McClendon (1956) died in Nacogdoches in December, the Nursing Department at City Memorial Hospital reported.

Welch Foundation Grants \$15,000 for Chemical Research

The chemistry department at Prairie View A. and M. College has received a grant of \$15,000 from the Robert A. Welch Foundation to continue research in rare earth chemicals.

The project, which is directed by Dr. C. T. Stubblefield, professor of chemistry, is entitled "Crystalline States of lanthanon dihalides by X-ray diffraction."



The Prairie View Standard

Published monthly during the school year except July and August by Prairie View A. and M. College, Prairie View College Branch, Hempstead, Texas.

Entered as second-class matter, March 2, 1911, at the Post Office at Prairie View A. and M. College Branch, Hempstead, Texas under the act of March 3, 1879.

Acceptance for mailing at special rates of postage provided for in section 103, Act of October 3, 1917; authorized July 18, 1915.

E. E. EVANS, Editor-in-Chief
C. A. WOOD, Managing Editor

Printed by
The Prairie View A. and M. College Press

Appreciation Dinner Held for E. B. Evans Division Scouters

The annual scouter appreciation dinner in the E. B. Evans Division, Boy Scouts of America, was held on December 5 at Prairie View A. and M. College.

Robert J. Tooley, Houston Scout executive, delivered the main address for the occasion. Awards were made for leadership training by Dr. A. N. Poindexter (Prairie View) and Eddie Harrison, division commissioner of Brenham, gave round-up awards.

S. G. Painter, scout executive for the division, which is a part of the David Crockett district, presented special awards to commissioner Eddie Harrison for outstanding service to the division, and to Dr. T. R. Solomon for his services in the annual boy scouts finance drive sponsored by the Sam Houston Area Council in November.

Dr. C. A. Wood, neighborhood chairman at Prairie View, was elected division chairman for the coming year, and Eddie Harrison was retained as division commissioner. The E. B. Evans division covers Negro scouting units in Burleson, Waller and Washington Counties.

H. T. Jones, principal of the Prairie View Training School, presided at the dinner meeting. Other program participants included Dr. E. B. Evans and Dr. J. L. Brown, acting division chairman. Special guests at the program included a representative of the Sam Houston Area Council in Houston and officers of the David Crockett District.

Science Program

(Continued from Page 1)

for June 9 through June 20. They will receive instruction in the fields of chemistry and biology from the science department staff and will also hear outstanding visiting lecturers of national and international stature. Research projects will be conducted under the direction of experienced teachers in these fields.

The objective of the program is to identify scholarly students who have excellent potentials for becoming scientists and to accelerate the scholarly development of these students by providing an opportunity for them to attend a program designed especially for talented students.

Scholarship assistance is available to qualified students. Persons interested in the biology program can secure information and application forms from Dr. L. C. Collins, chairman of the biology department. Students in chemistry should write Dr. E. E. O'Banion, head of the department of Natural Sciences at Prairie View.



BETTER NUTRITION THROUGH FOOD PRESERVATION . . . J. J. Woods, professor of agriculture, explains the exhibit of his class in food technology which was prepared for the annual Food Show.

Nutrition Week Sponsored By School of Home Economics

The School of Home Economics in cooperation with the Division of Industrial Education and the School of Agriculture of Prairie View A. and M. College observed its 8th Annual Nutrition Week, on December 3-7, 1962. The theme for this observance was "Get in Orbit—It's the Food You Eat that Counts."

The week began officially at ten o'clock, December 3, with the keynote address "Community Nutrition in the Future." This address was delivered by Miss Agnes Bannister, Director of Dietary Services, John Sealy Hospital, Galveston, Texas. Other interesting features of the week included film presentations and discussions focusing attention on food fads and fallacies, infant nutrition, teenage nutrition, and the role of research in our society. On Thursday morning, a lecture demonstration was given on "Roll and Pastry Making." A Food Show displayed recent innovations in food processing and research areas.

ing was held on Thursday afternoon.

With the exception of the keynote address which took place in the Memorial Center Ballroom, the Elizabeth C. May Home Economics Building was the center of activities. Educational exhibits were displayed in prominent places throughout the building. Literature on various aspects of nutrition was available for distribution.

PV Gets License for Radioactive Material

The department of Natural Sciences at Prairie View A. and M. College has received a license for the use of radioactive materials for research and teaching purposes. The department has a well equipped radioisotopes laboratory and research is currently being conducted in the fields of biochemistry and biology. Plans are being developed to expand in the teaching and research areas.

Religious Emphasis Week Observed

"A New Look" was the theme for Religious Emphasis Week activities observed on January 13-15 at Prairie View A. and M. College.

The Reverend Walter Willis, chaplain at Huston-Tillotson College, Austin, served as keynote speaker for the three-day observance. He spoke on the subject—A New Look—at religion, during the 11:00 o'clock worship hour Sunday.

Other visiting speakers included attorney George Washington of Houston, who lectured on—"Students look at human rights and freedom" and the Reverend M. M. Pierson, Houston. The Les Beaux Arts and Les Belle Lettres Clubs presented a panel discussion on "Students look at male-female relations and sex." Panelists included Lizzie J. Williams, Mardell Hunter, and Delois Metcalfe.

The Reverend L. C. Phillip, chaplain at Prairie View, was in charge of the various programs.

Choir Clinic Set For February 9

Noble Cain, noted composer and authority on choral music, will serve as one of the judges for the choir clinic scheduled on February 9 at Prairie View A. and M. College.

Other adjudicators for the clinic will include Chris Dixie, former member of the school of music at the University of Colorado and teacher of vocal music, and Dr. H. Edison Anderson, director of the Prairie View A Cappella Choir.

Several choral groups from all parts of the state are expected for the clinic, which will be non-competitive. A written analysis of each performance will be given to each director with suggestions for improvement.



PRAIRIE VIEW'S A CAPPELLA CONCERT CHOIR—1962-63 EDITION . . . Popular group is completing plans for several performances throughout the state.



PV Cage Team Ranks High in AP and UPI National Polls

The Panthers of Prairie View were ranked fifth in the nation in the Associated Press and United Press International's small college weekly poll. Prairie View has a 11-2 season's record after whipping Texas Southern 60-58 in a close battle in Houston.

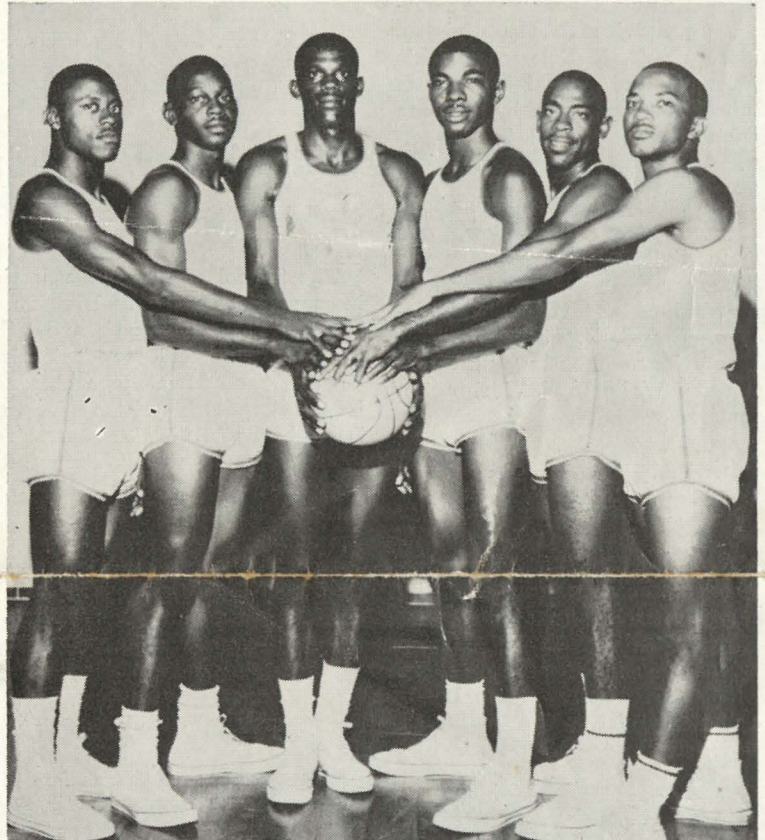
The national champs of last year were undefeated until they ran into powerful Bellarmine (Kentucky) team in the Quincy Holiday Tournament in Illinois. The Panthers lost to Bellarmine 59-47, but captured fifth place in the Tourney after dropping St. Benedict 66-57 and Eastern Illinois 56-53.

The Panthers' five starters—Dewey McQueen, Samuel Jenkins,

Samuel Garrett, Douglas Hines, and James Moore are all averaging in double figures. As Coach Leroy Moore puts it—"there are no stars, not even scoring leaders."

There has been a different high point man in almost every game.

Prairie View's 1962-63 Cagers have been described as a "scrappy bunch"—lacking height, but working hard to make up with speed, drive and determination. Their major hurdle in the conference race is Grambling, but they know that such teams as Arkansas, Southern, and Jackson State must be reckoned with before they can hold on to their league title for another year.



THE BIG SIX . . . Top men on the 1962-63 Panther basketball team, all members of last years championship outfit, are—(L to R) Samuel Jenkins, James Moore, Douglas Hines, Samuel Garrett, Dewey McQueen, and Wilbur Williams.

SPECIAL AWARDS DURING ANNUAL PV CLASSIC . . . Top photo shows Maceo Hill of Central State College (right) accepting an award for I. S. Lane, former assistant coach and teacher, at the College (1923-25) who was unable to be present. Principal T. H. Burton of Hawkins (left) made the annual presentation along with Luby Bass of Houston and T. L. Pink, Glen Flora. Contributors included Dr. C. T. Ural, Sy Ural, William Franks, Ira Lawson, S. A. Arnell (all of Houston); L. E. Clayborne, Forney; W. R. Pollard, Texarkana; A. D. Turner, Colorado Springs, Colorado; Dr. I. T. Hunter, Tyler; A. W. O'Neil, Henderson; N. L. Davis, Tyler; and E. R. Perchman, Giddings.

BOTTOM . . . Former All-American Ray Don Dillon presents award to Miss Prairie View.

THE PRAIRIE VIEW STANDARD

JANUARY 1962

News of Prairie View A. and M. College



TEXAS AND ARKANSAS CONVERGE . . . Cheerleaders from Arkansas A. M. & N. pose with Panther cheering leaders during grid game played on campus. The two Southwestern Conference colleges are long-time friendly rivals.

Mr. & Mrs. L. C. Phillip
Box 2002
Prairie View College
Prairie View, Texas