

Prairie View A&M University

Digital Commons @PVAMU

PV Panther Newspapers

Publications

2-12-1980

Panther - February 1980 - Vol. LIV, NO. 11

Prairie View A&M University

Follow this and additional works at: <https://digitalcommons.pvamu.edu/pv-panther-newspapers>

Recommended Citation

Prairie View A&M University. (1980). Panther - February 1980 - Vol. LIV, NO. 11., *Vol. LIV, NO. 11* Retrieved from <https://digitalcommons.pvamu.edu/pv-panther-newspapers/248>

This Book is brought to you for free and open access by the Publications at Digital Commons @PVAMU. It has been accepted for inclusion in PV Panther Newspapers by an authorized administrator of Digital Commons @PVAMU. For more information, please contact hvkoshy@pvamu.edu.



The PANTHER

PRAIRIE VIEW A&M

UNIVERSITY

PRAIRIE VIEW, TEXAS

February 7-12,
1980

Volume 54
Number 11



OLDEST CAMPUS STRUCTURE COMING DOWN — Foster Hall, erected in 1894 is being demolished along with Luckie and Minor Halls and several other buildings and cottages. Renovation and repair work is progressing throughout the campus, while plans for new construction are underway.

Women's Track Team Wins SWAC Title

By Henry Hawkins

With "an excellent team performance," Prairie View women's track team roared to their third Southwestern Athle-

tic Conference Indoor Track meet championships last Saturday.

The Panthers rang up 138 points, well outdistancing Jackson State, which finished with 91 points.

"We had outstanding performances from the team as a whole," said Ms. Barbara Jacket, women's track coach at Prairie View. "A couple of people who surprised me were Pam Fowler and Chestina Martin, Fowler because she missed last season with an ankle injury and Martin has been practicing on her own because of student teaching obligations.

Essie Kelley, outstanding distance runner for Prairie View, won the 1000-yard and 800-yard runs and anchored the winning mile relay team.

Those three first place medals will go right alongside the first place medals she won in the 1977 and 1979 Southwestern Athletic Conference Indoor track meet, also in the 1000 and 800-yard runs and mile relay.

Karen Waddell, Martin and Patricia Jackson also won first place medals for the Pantherettes — Waddell tossing the shot put 43-8; Martin clearing 5-8 in the high jump and Jackson in a record setting

time of 1:26.06 in the 600-yard run.

Debra Melrose and Sheila LaBome were busy Pantherettes, Melrose, a senior from Austin, finished in four events — second in the long jump with a leap of 19-3½; second in the 60-yard hurdles in 7.89 and ran legs on the third place 4-lap relay team and the first place mile relay team.

LaBome finished fifth in the 60-yard dash, fifth in the 440-yard dash and ran on the third place 4-lap relay team.



Essie Kelley

Trail Riders Coming Soon

The annual Prairie View Trail Ride, held in connection with the Houston Livestock Show and Rodeo, will begin this year with a Rodeo on

February 16 at the Waller County Fair Grounds.

Riders will parade through the campus and present a brief program Sunday, February 7.

TAMU Board Adopts — Governor's Proposal for Reduction of Employees

The Texas A&M University System Board of Regents meeting in College Station last week adopted a modified version of a resolution proposed by Governor Clements for a five percent reduction in the number of state employees.

Texas A&M's resolution differs from the governor's proposal only to the extent that it allows adjustments to respond to enrollment increases, contractual obligations and to carry out sponsored research.

"This board concurs with Gov. Clements' goal for efficient and effective management in state government," stated board Chairman Clyde H. Wells, "and we feel our resolution certainly complies with the intent and spirit of the governor's suggested resolution."

Chancellor Frank W. R. Hubert said he is confident the various parts of The Texas

A&M University System can comply with the resolution, "without detracting from the quality of our programs considering the allowances for enrollment gains and contractual obligations."

AKA Founders Day Observance Set For February 10

The Alpha Kappa Alpha Sorority, both undergraduate and graduate chapter, will sponsor a program in observance of Founders Day on Sunday, February 10.

The program, which will present a feature on the need of the black universities, is scheduled for 3:00 p.m. in Hobart Taylor auditorium.

Engineers to Hold Student Awards Banquet

According to Engineering School Dean A. E. Greaux, the Annual Student Awards Banquet will be held on Wednesday, February 13. The event is sponsored by the Texas Society of Professional Engineers.

Jiles Daniels, Jr., a senior mechanical engineering major has been named the outstanding Engineering student of the Year at PV.

TAMUS Board Hears PV Prexy and Students

Prairie View A&M University President A. I. Thomas, flanked by a dozen student leaders, told the Texas A&M University System Board of Regents not to be overly alarmed by criticism of facilities at the predominately black institution.

"We're going to have to weather some of these storms," Thomas said, "but we know we are headed in the right direction."

"These students see what

you are doing to help Prairie View and are most appreciative," he told the regents following a Monday luncheon honoring the Prairie View A&M students.

The regents, who have held similar sessions with Texas A&M and Tarleton State students, hosted the luncheon in conjunction with committee meetings leading up to their regular business meeting Tuesday.

Each of the students

outlined his or her background and aspirations in a formal presentation.

"It is a real inspiration for us to have heard each of you express your goals," said Board of Regents Chairman Clyde Wells in response to the student presentations.

The students later attended a meeting of the board of Regents' Committee for Academic Campuses and heard Dr. Thomas report on activities at Prairie View.

Thomas noted the acquisition of a new computer for the university and reported on the completion of transaction authorized by the regents to purchase the Herman Professional Building near Houston's Texas Medical Center for use in the Prairie View A&M nursing program. Thomas estimated construction-related expenditures at Prairie View over the past decade total \$70 million, including \$9 million currently being expended for renovation.

PV Extends Educational Aid —

Liberia Project Emphasizes Basic Skill

Armed with the largest host contract ever awarded a predominately black college, representatives from Prairie View A&M University are waging their way to Kakata,

Liberia to begin a five year program to restructure secondary training in several basic fields.

University President Alvin I. Thomas made the announce-

ment along with Dr. Ivory Nelson, vice president in charge of Research and Special Programs.

"It is a \$14,000,000 program with Prairie View A&M

receiving \$6,000,000 in culmination of months of hard work by many people," Dr. Nelson said. "Twelve major colleges, including Michigan State and Ohio State, were after this project, and I think we won because of the personal proposal made by Dr. Thomas and Dr. George Stafford, director of Admissions, and other members of the staff following the written proposals."

With headquarters at the Booker Washington Institute in Kakata, the Prairie View team of specialists will concentrate in four basic areas including agriculture, electronics, mechanics and building trades.

"There is no blue collar class in this area and our people will not only teach in these four basic fields, but will concentrate on turning out instructors," Dr. Nelson explained.

The Prairie View team (three are already in the country and three more left recently) consists of instructors holding masters degrees, 10 or more

years experience in their field with all having teaching backgrounds, Dr. Nelson added.

An interesting sidelight to the five year program is the fact that the principal of the institute in Kakata, F. Sirleaf, is a graduate of the host university.

"Another member of the school system there is also a graduate of Prairie View, but I don't remember his name," Dr. Nelson said.

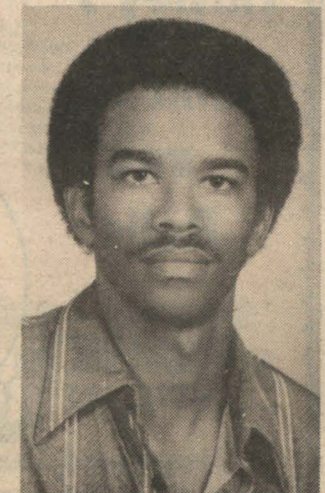
It was 26 years ago when Prairie View A&M first made contact with Liberia with a modest federal grant of approximately \$1 million.

"Dr. Thomas, who was at that time director of Industrial Education, went to Liberia with a team from the university to determine if we wanted to get involved in the program," Dr. Nelson said. "Of course, we did and beginning in about 1955, we sent a team of about 28 people in a four-year program."

The Liberian government



AFRICAN MISSION — President A. I. Thomas (right) and Dr. Ivory Nelson, left, vice president for Research and Special Programs, bid farewell to three new employees assigned to the Liberian Program. They are (L-R) Elliott Myers, electronics; Lewis Grant, building trade; and Hulon White, mechanics.



Jiles Daniels

See LIBERIA, Page 5

Eight Colleges Represented At Energy Conference

**By Jack Weeks
News Director**
Faculty and students from eight historically black colleges in Texas, Arkansas, Oklahoma and Louisiana along with national leaders concerned with minority involvement in energy technology attended Prairie View A&M University's two-day conference at the Camp Allen Conference Center and praised in unison the success of the conclave.

Typical of the comments was from Dr. William Jones, from the Office of Energy Research, Department of Energy, who said during a short interview between sessions:

"This conference is first rate in every respect, and the scientific papers were excellent. Dr. Thomas (Alvin I. Thomas, president of Prairie View) is to be commended, along with his tireless staff. The conference was set up on the broad energy problem, starting with problems of the world, then the nation's, then Texas problems, followed by the low income people's problems, and finally the minority. It was worked from the top down, not the reverse!"

Under the direction of Dr. John R. Williams, the Center for Energy Affairs at Prairie View A&M hosted the conference with a major thrust to include regional coordinator effort among the historically black colleges.

Dr. Williams explained the primary objectives of the Regional Consortium of Minority Schools including the increase of capability of the institutions to provide quality

programs in science, engineering and technology, and to increase the number of minority investigators involved in energy and energy-related research.

He continued: "We also want to eventually increase the number of minority individuals with scientific and technical skills for careers in energy and up the level of involvement of the minority community in energy policy and decision making!"

Dr. George Moore, of the Oak Ridge National Laboratory in Oak Ridge, Tennessee, and James Evans, affirmative action officer from the Lawrence Livermore National Laboratory in Livermore, California were featured speakers, and had comments about Prairie View A&M and its two-day conference.

"The conference was one of a kind, in that it was the first one I have attended that was augmented by a predominately black college, and represented by so many of the same kind," said Dr. Moore. "I came away with the feeling that as a white man I believe I have a better understanding of my black associates who have been attending predominately white conferences."

Said Dr. Evans: "There were many things on the agenda that we needed to discuss, and the conference was first rate, but I would like to next time have more of a working meeting with informal discussions rather than hearing the more formal and prepared speeches."

On participation of Prairie View A&M students, Dr. Jones

said he thought it was fantastic.

"There were 90 engineering and science students from the university, and the really surprising thing was that 40 percent of them were women, and Dr. Thomas did something that I really admire. He had a consultant at each of the student tables to answer any questions and to keep them abreast of the conference!"

Dr. Jones had one more thing to say about Dr. Thomas.

"He said at the opening of the meeting that the only racism he wanted to hear was about human racism!"

In addition to the aforementioned national figures, there was Roy Bracken from the Solar Energy Research Institute in Golden, Colorado; Kenneth Hughes, Director of Operations, Bartlesville Energy Technology Center of Bartlesville, Oklahoma; Dr. Kofi Bota, professor of chemistry at Atlanta University, Atlanta; and Dr. Thomas W. Cole, Director Resource Center for Science and Engineering at Atlanta University.

In addition to Dr. Thomas and Dr. Williams, Dr. Ivory Nelson, Dr. Hershell Sheely, Dr. Evelyn Thornton, Dr. John H. Fuller, and Dr. Sarah R. Williams, along with the students represented Prairie View A&M University.

Others represented were Langston University, University of Arkansas at Pine Bluff, Bishop College, Wiley College, Jarvis Christian, Texas Southern University and Texas College.



Left to right: Dr. John Williams, director of Center for Energy Affairs, PVU, and William Jones, Office of Energy Research, Dept. of Energy, take a break from sessions at Prairie View A&M University Energy Conference . . .



Left to right: Dr. Rueben D. Manning, academic Vice President of Langston University, Langston, Oklahoma; Dr. George Moore, from Oak Ridge Laboratory, Oak Ridge, Tennessee, and James Evans, affirmative action officer from Lawrence Livermore National Laboratory, Livermore, California, chat between sessions of the conference held last week at Camp Allen Conference Center.

Black Farm Population Shows Decline

Only 350,000 Blacks remain- States in 1978, according to a ed on farms in the United recent report by the U.S. Bureau of the Census. By comparison, the Black farm population was nearly 4.7 million in 1930 according to the census that year.

During the same period, the overall U.S. farm population also showed a sharp decline, though not as sharp as the drop in the Black farm population.

In 1930, 30 percent of the U.S. population lived on farms. That figure had fallen to just 3 percent by 1978.

Blacks constituted 5.4 percent of the total U.S. farm population in 1978, with Spanish-Origin farm households making up 1.4 percent of the total.

The report, "Farm Population of the United States: 1978," indicates that the rate of unemployment continues to be low in farm population in comparison to the civilian labor force for both races. However, Blacks still had an exceptionally higher rate of unemployment. In 1978, the rate of unemployment was 2 percent for the White farm population, but 8 percent for Black farm residents.

Children comprise a substantial portion of the Black farm population. Children under 14 made up 28.1 percent of the Black farm population in 1978.

Schwarz Inc.
"104 Years of Continuous Service"
COMPLETE DEPARTMENT STORE
and
FURNITURE STORE
It's a pleasure doing business with you
Tel. 826-2466 P. O. Box 535
Hempstead, Texas

Tinsley's
Chicken
and
Rolls
TINSLEY'S
HWY 290 BOSS BIRD
Hempstead, Texas



How About an Engineering Career in Los Angeles?

Openings available with the Department of Water and Power for engineering graduates in **civil, electrical, mechanical and sanitary engineering** with strong technical training and good communications skills.


Entry Level Positions Start at \$1701 Per Month

- PLANNING
- DESIGN
- WATER QUALITY
- CONSTRUCTION
- QUALITY ASSURANCE
- OPERATIONS

Contact Career Planning and Placement Center at your school or write to or call:
Ray Adams, Engineering Recruitment Office
Los Angeles Department of Water and Power
Room 503
P.O. Box 111, Los Angeles, CA 90051
Telephone (213) 481-4542

- Career Oriented Employment
- Professional Development Opportunity
- Job Stability
- Advancement Based on Merit
- Equal Employment Opportunity
- Group Health and Life Insurance
- Excellent Retirement Plan
- Paid Vacation and Holidays
- Reimbursement for Graduate Study at Local Universities
- Credit Union
- Other Employee Benefits

We will be interviewing on your campus soon.
Check your Career Planning and Placement Office for an interview appointment.




MINISTERS CONFERENCE — President A. I. Thomas greets ministers and guests during Annual Conference held on Campus February 5-6.

Minority Employment At USDA Up 10 Percent

Minority employment at the U.S. Department of Agriculture (USDA) has increased more than ten percent since October 1977, Assistant Secretary of Agriculture Joan S. Wallace said recently. Wallace is the first black assistant secretary in USDA's history.

As of June, 1979, USDA employed 9,017 minority workers, 10.55 percent more than the 8,156 employed in October 1977, Wallace told the Forum on Blacks in Agriculture, an organization of black USDA employees.

Wallace said white employment at USDA increased 1.89 percent in the same period from 71,322 to 72,668. At the same time, the number of female employees went up by 8.09 percent, from 19,745 to 21,344.

Citing other gains for minorities since 1976, Wallace said USDA had increased the number of students enrolled in the cooperative education program from 241 to 1,040 students. USDA's equal employment opportunity staff, she said, increased from six permanent full-time persons to 15 within the last year.

In addition, USDA has established a university affairs office to serve as liaison with the predominantly black universities. The financial assistance to historically black land grant universities has increased from \$21.6 million to fiscal 1977 to \$23.4 million in fiscal 1978.

USDA also established the office of Small and Disadvantaged Business Utilization to help minority businesses get their share of the money being spent by USDA annually for goods and services. She said

minority business received, \$12 million from USDA in 1977 but are now getting \$38 million annually.

The board appropriated \$40,000 for design for an eight-court tennis complex at Prairie View A&M.

In other business, the regents awarded a contract for construction of a \$14,798,500 facility for Texas A&M University's College of Medicine to Allen M. Campbell Co. of Tyler. Several other contracts were awarded for construction at Texas A&M and Tarleton State University.

Gifts totalling more than \$850,000 were accepted by the regents on behalf of four academic units of The Texas A&M University System. Texas A&M received gifts of \$639,294 during the October 31-December 14 reporting period; Prairie View, \$105,069; Tarleton State, \$100,612; Texas A&M University at Galveston \$5,600.

Tennis Court Complex Planned

The board appropriated \$40,000 for design for an eight-court tennis complex at Prairie View A&M.

In other business, the regents awarded a contract for construction of a \$14,798,500 facility for Texas A&M University's College of Medicine to Allen M. Campbell Co. of Tyler. Several other contracts were awarded for construction at Texas A&M and Tarleton State University.

Gifts totalling more than \$850,000 were accepted by the regents on behalf of four academic units of The Texas A&M University System. Texas A&M received gifts of \$639,294 during the October 31-December 14 reporting period; Prairie View, \$105,069; Tarleton State, \$100,612; Texas A&M University at Galveston \$5,600.

Book Review Set For February 16

Century Two Book Review project will present another feature on Wednesday evening, February 27 at 6:00 o'clock.

Dr. J. Reuben Sheeler, former head of the History Department at Texas Southern University will review the book — The Emerging Order by Jeremy Rifkin and Ted Howard.

The event will be held at the President's Campus Residence. Dr. Clarissa Booker is coordinator of the Book Review project.

Campus Rep Announces New Beer Package for '80s

Mrs. Diane E. Andrews, a business major in the College of Business is presently the Miller Brewing Representative at Prairie View A&M University. Among other duties, Mrs. Andrews is responsible for keeping the Miller Brewing Company informed on the package sales and the keg sales in Prairie View, Texas.

Miller Brewing Company, one of most prosperous businesses in the United States produces Miller High Life, Lite, and Lowenbrau (light and dark).

Mrs. Andrews reports that in addition to Miller's 12 oz. bottles and cans, and the 32 oz. bottles, Miller now has the



Diana Andrews
"Pony" which is the new
See BEER PACKAGES, P. 5

Recognition of Performance is Key to Success at Natural

Career opportunities available for Petroleum, Mechanical, Electrical and Computer Engineers

Natural Gas Pipeline Company of America provides an ideal environment for entry level engineers. We're big enough to be involved in every facet of our industry. Big enough to have equipment and facilities among the most modern available. But not too big to recognize individual achievement. That's why many of our engineers, who started at the entry level, have advanced quickly into management positions.

Such opportunities are available to you at field posts throughout our 11-state operating area and at office assignments in Houston and Chicago. And we'll help you succeed—with on-the-job training and educational assistance. These are but two items in a comprehensive employee benefit package.

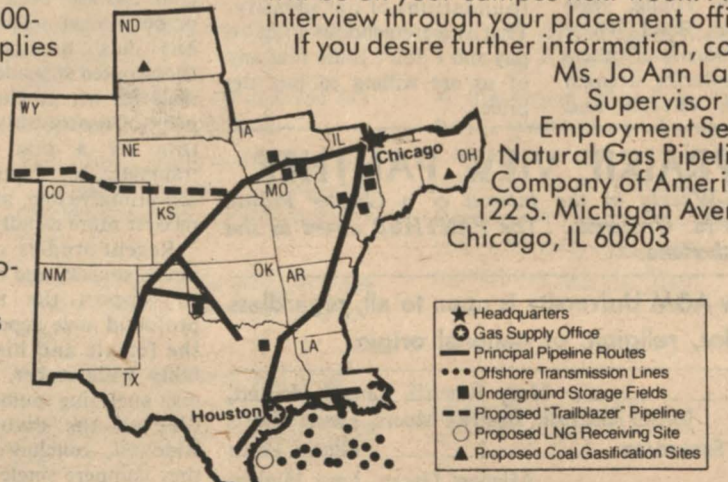
Natural, with its nearly 12,000-mile transmission system, supplies the natural gas energy needs of 12 million people in Mid-America. Our pipeline network serves 49 utility customers in a 9-state market area. Each year, NGPL transports almost 6% of the total gas production in the United States.

Our day-to-day operations include on- and off-shore exploration and production, as well as transmission


and storage. Far beyond those traditional operations, we're planning an 800-mile pipeline, "Trailblazer", to tap into gas reserves in the Overthrust Belt of the Rocky Mountains. We're utilizing biogasification and synthetically-produced gas and are actively pursuing the development of coal gasification and the importation of liquefied natural gas. In the future, we hope to tap supplies from the Arctic and Mexico. Whatever avenues of supply or technology open up in our industry, we'll be there—among the frontrunners.

If you are a skilled, imaginative, aggressive engineer, who wants to be rewarded for performance, now's the time to act. Our recruiters will be on your campus next week. Arrange an interview through your placement office today.

If you desire further information, contact:
Ms. Jo Ann Lazuka
Supervisor of Employment Services
Natural Gas Pipeline Company of America
122 S. Michigan Avenue
Chicago, IL 60603



NGPL Recruiters will be visiting your campus on: February 20, 1980



Natural Gas Pipeline Company of America
An equal opportunity employer M/F

PEOPLES CLEANERS
DRY CLEANING, ALTERATIONS, LAUNDRY SERVICE AND LEATHER CLEANING
826-3847 — Day or Night
P. O. Box 136
Hempstead, Texas
1 - 2 HOUR CLEANING SERVICE

WARD'S PHARMACY
"Your Rexall Store"
SENIOR CITIZEN DISCOUNT AVAILABLE ON PRESCRIPTIONS
Telephone 826-2445 Nights 826-2295
Hempstead, Texas

Panther Club to Run For Track Team

To All Students! Who Should Be Concerned: Students of Prairie view there is a matter of the utmost urgency that we must all focus on and give our undivided attention and concern. On Saturday, February 2, 1980, the SWAC Indoor Track Championship was held, but Prairie View A&M University, the oldest original member of the conference, did not participate. This is truly tragic and disheartening to the brothers of the Panther Club and we are sure that the entire campus feels the same as we are.

time when the entire campus must unite and support all efforts partaken to get our track team back on the track.

On Saturday, February 23, 1980 the Panther Club will be sponsoring a five mile marathon run, all athletes will be participating and your sponsorship and support of this event is greatly appreciated.

This is just one of the many activities we have planned. We are asking that the entire campus, students and faculty come together and support our Athletic Program, because if we don't care then who will. Keep our Track Team on Track.

Ray Hartsfield
President, Panther Club



JOURNALISM STUDENTS take time out for fun pose following class session in Publications Building.

On Being Black

By Hedy Ratcliff

Blacks are proud people of the American land; We help to protect it, cultivate it and make it appropriate for every child, woman and man.

Blacks are leaders, inventors, and pioneers of Arts and Sciences; Regard of any opposing force, we still have ambitions to fulfill and we aspire to reach them all with diligence.

Being Black, is unique let the eloquence of your existence be reflected with potential meaning*

Being Black, respect and recognize the power of God the Almighty has brought us far from where we were to where we are.

Being Black, do good with a kind heart and strive to be a consistent achiever, provide a path for the upcoming generations of the future to enhance their opportunities for success in life by caring*

Sold Out

Are Women Stronger Than Men?

By Ronnie Smiley

Today millions of men are hurting themselves by being "men!" Society teaches males that the female is the more emotional dependent one in the man-woman relationship. Bull! I wonder who made this myth up.

The male is deeply dependent on the female from conception on. Despite the talk and noises he makes about not allowing a woman to control or dominate him in order that he might maintain his fantasy of being stronger and totally in control of the relationship. Many males unconsciously seek a relationship of primitive dependency such as they had with their mothers. The female child has also been dependent on her mother, a female figure, but has no comparable deep-rooted dependency on the male for her psychic nourishment. Consequently, a rejection by a man may be traumatic, but the trauma is a less primitive one, and she can recover more rapidly.

Recent studies on mental illness suicide, and death seem to support the theory of profound male dependency on the female and his vulnerability without her. Researchers, analyzing numerous studies on the divorced and widowed, concluded: "When they compare single men with single women, divorced men with divorced women, and widowed men with widowed women, more men were residents of mental hospitals in each case.

Data from the National Vital Statistics system indicate that the divorced male has an annual death rate that is more than three times as high as the divorced female. A recent study on suicide revealed that in some areas of America,

bachelors have a suicide rate which is more than four times as high as women who had never been married. And recent research on remarriage indicated that the divorced male tends to remarry sooner after his first divorce than the divorced female.

The evidence strongly suggests that the male who loses his female attachment, be he divorced or widowed, and the single man who had no female attachment are all significantly more vulnerable to mental illness, suicide, and death than the women in a similar situation.

In my opinion, about why women in our culture live so much longer than men because unconsciously the male is afraid that he can't survive without the woman. Take a look around Drew Hall and you will see what I mean.

What is happening to the female today? Is she becoming a different person? The answer is "no." She is simply emerging, revealing her true identity, and allowing her long-suppressed aggression to surface. Traditionally, men did not recognize the existence of female aggression. They needed to maintain an image of her as weak in order that they could deny their own dependency needs and see themselves as strong.

The man who continues to hold on or search for the few women, willing to play the role of the old fashioned, selfless, passive, and devoted female are courting emotional disaster. These women may never have existed in the first place.

The good little girl is dead, and now the macho man can die as well. The male can come alive as a full person. No

See SOLD OUT, Page 6

Kollar Korner

Beginning on Ash Wednesday, the 20th of this month and lasting until Easter, April 6th, we will be in what the Christian Church calls the season of Lent. This is a 'penitential' season, that is, one in which a person considers the wrongs he has done and then expresses his willingness and desire to atone.

Lent has historically been characterized by the giving up of something meaningful or important in one's life in remembrance of the sacrifices made for us by Jesus Christ. More recently, however, this season has been characterized by the taking on of some extra discipline (like prayer, or fasting, or being of more service to others) in remembrance of our Christian obligation, through our personal baptisms, to the service of God in Christ. The main point is that, in whatever you do, you take time to remember the Christ not only in your life but also in the lives of others, and amend your life's actions accordingly.

Father Jim Sproat, Advisor Canterbury Association (St Francis Episcopal Church) Prairie View



Think of him as one of God's great family, whether you have liked him or not. It has been said that the best way to overcome a feeling of hatred toward a person is to do him a kindness. At least one person will be uplifted. Think of Jesus Christ and the love He expressed for all humanity.

4. When you step out at night under the stars, look up and consider the intelligence, the power, the Spirit that guides and controls the vast universe and your own life. Your life is modified and limited only by your own spirit, by your own restricting or expanding ideas as you seek to express your God-given free will.

5. Read at least one book that gives the personal experience of a sincere, enlightened person. (Consult your Church or the Library for suggestions.)

6. Attend the services of the church of your choice for inspiration and enlightenment on God's holy Word.

7. Pray. Pray by word and deed for the hastening of God's Kingdom to be made manifest, according to His Word and Promise, from your own home or living quarters to the homes of all the peoples of the earth.

I invite you, therefore, in the name of Jesus Christ, our Lord, to the observance of a holy Lent, by self-examination and repentance, by prayer and self-discipline, and by reading and meditating on God's holy Word.

SUPPORT THE PANTHERS

CAMPUS PHOTO PLAYS

ENJOY Campus Movies

Watch for Schedule

Sun., Feb. 10 KUNG FU HERCULES

Wed., Feb. 13 THE BLACK GODFATHER

MAMMOTH EXCITEMENT! GIGANTIC ACTION!

a mountain of muscle... strong as an ox... mad as a bull

and ready to rip you apart!

KUNG FU HERCULES WORLDS LARGEST KILLER

THERE'S A NEW GODFATHER IN TOWN

THE BLACK GODFATHER

Distributed by BEB



ALL-FAITHS CHAPEL FUND DRIVE MOVING AHEAD — Four Leaders of the successful campaign are pictured during an earlier event. All four were on hand to continue the Drive at the Annual Ministers Conference.

You and The Teacher

By Matthew A. Castille

Before some of us reach institutions of higher learning, perhaps some of us have already conceived ideas about either what we are or what we aren't going to do. But not only that, some of us might just be imbedded with our own ideas about persons.

Nevertheless, if we are here to learn how to perform properly, then we have no choice except to do what the teachers say do and show they might

say do it. Each time that I sit in a classroom, I am more than aware that better persons than myself have sat there. Some listened and learned. Others were perhaps like some of us.

They had their minds already made up about what they were or were not going to do. And, the end result was probably like this: They did nothing and they got nothing. Let us not be like the latter.

We can learn more by doing something than we will ever learn by doing nothing.

Let us inform & entertain you for 1/2 price

Receive the new morning Chronicle for half-price for daily and Sunday delivery all semester and get thorough news coverage.

Coverage which offers more significant and timely information than any textbook. Information which will help you excel in classes.

But we give you more than news. We offer the latest sports coverage, fashion, money-saving and time-saving recipes and entertainment. Sunday's Zest magazine previews and reviews plays, movies, books, and music.

To start your subscription today call 826-6584.

BRANNAN'S MEATS OF QUALITY

2200 Cherry Waller 372-3639

CITIZENS STATE BANK

MEMBER F. D. I. C.

P. O. Box 575 Phone 826-2431

HEMPSTEAD, TEXAS

yiany's

- FRIED CHICKEN
- PIZZA
- SPAGHETTI
- PO BOYS

Drive In or Carry Out

826-3491 HEMPSTEAD, TEXAS

Alpha Angel Society Valentine Day Sale

The ladies of the Alpha Angel Society will be selling Heart Shaped Cookies on Valentine Day, 3 for 25 cents.

Alpha Angel Society Kisses Send a kiss to your loved one on Valentine Day, 4 for 15 cents.

Time and place to be announced.

Liberia —

CONTINUED from Page 1

spent some 15 days in Washington listening and reading the voluminous proposals from each of the universities.

"We met everyone with the Liberian government from the Ministry of Education on down, and it was their choice, and not the United States who acted only as the banker in the program," Dr. Nelson said.

Those who left most recently included Elliott Myers, elec-

Beer Packages —

CONTINUED from Page 3

8-pack 7 oz. bottles. Moreover, Miller has the new 16 oz. cans and the new twist-off tops for the Lowenbrau bottles.

In keeping with traditions passed down from over the years, Miller Brewing Company continues to satisfy consumers with a fine quality beer.

Journalism Scholarships Announced

The Ralph McGill Scholarship Fund offers scholarships for the 1980-81 school year of up to \$1,500 each to students with southern backgrounds who have completed at least two years of college, Jack Tarver, chairman of the Scholarship Fund said today.

Tarver said May 1st is the deadline for applications. He said a number of scholarships are awarded each year to students who have demonstrated a long-time interest in the news and editorial phase of newspapering.

Scholarships, he said, are limited to those young men and women whose roots lie in the south. Applicants must also convince the Awards Committee that they firmly intend to pursue a career in daily or weekly newspapering. Tarver said the Awards Committee wants to give scholarships to those who are likely to become leaders in the newspaper field.

Successful applicants will be required to maintain a "B" average in order to keep the scholarship.

A letter of not more than 500 words telling why the applicant wants a scholarship, together with a photograph of the applicant, must accompany each application. Applicants also must have a letter of recommendation from a college authority.

Application blanks may be obtained from: The Ralph McGill Scholarship Fund; Box 4689, Atlanta, Georgia 30302.

Hearing of Landfill Project on Campus



TWO-DAY HEARING ADJOURNED — Dr. Alvin I. Thomas, president of Texas A&M University, appears to have a sigh of relief following the adjournment of a two day hearing on campus for an application from the university to operate a sanitary landfill on 18 acres in the northwest portion of the university. Gaines West, Prairie View A&M counsel, right, has been asked by the state examiner to file briefs along with the attorneys of opponents to the proposal before the application is acted on. State Examiner John Richards said the university will be notified within 120 days whether the application is approved or denied.

each application. Applicants also must have a letter of recommendation from a college authority.

Application blanks may be obtained from: The Ralph McGill Scholarship Fund; Box 4689, Atlanta, Georgia 30302.

Les Belle Lettres Presents
Les Beaux Arts 23rd Annual Black Arts Show
Thursday, February 21, 1980
8:00 p.m.
Memorial Center Ballroom
Free!!!!

GRADUATING ENGINEERS

Have you considered these factors in determining where you will work?

- Will the job offer challenge and responsibility?
 - Will your future employer encourage job mobility?
 - Will your future employer encourage, support and reward continued professional education?
 - How much choice will you have in selecting your work assignment?
 - Big starting salaries are nice — but what is the salary growth and promotion potential in the job?
 - Can you afford the cost-of-living in the area?
- At the Naval Weapons Center we have given these things a lot of consideration and believe we have the answers for you.
- Arrange through your placement office to interview with our representative! Manny Dunn
- on February 14
- We think you will like what you hear.

If you cannot fit an interview into your schedule, write or call:

C. KAREN ALTIERI
Professional Employment Coordinator
NAVAL WEAPONS CENTER (CODE 09201)
China Lake, CA 93555 • (714) 939-3371

An Equal Opportunity Employer.
These are Career Civil Service Positions. U.S. Citizenship Required

THE PRAIRIE VIEW PANTHER

Published Bi-Weekly in the Interest of a Greater Prairie View A. and M. University. The PANTHER serves as the voice of Pantherland.

Prairie View A&M University is open to all, regardless of race, color, religion, or national origin.

REPORTERS Hedy Ratcliff, Cheryl Hackett, JoAnn Alderson, Beatrice Moore, David Harris
DEPARTMENT SECRETARY Gloria Perez
SPORTS Michael Hearn, Jerry Mathis,
PHOTOGRAPHERS Paris Kincaide, Robert Sandling, James Hawthorne, Barry Baugh, Robert Thomas, Brett Horn (Tom Godwin, Roy Pace)

Any news items, advertising, or matters of interest to THE PANTHER may be presented to the Department of Student Publications, Room 108-112, New Classroom Building Telephone 857-2117. C. A. Wood, Publications Director.

CASS Student Advertising, Incorporated
1633 WEST CENTRAL
EVANSTON, ILLINOIS 60201

Reflections of AKA

With this month of February, we will celebrate Black History Month. We shall honor all those who have fought for justice, equality, and have contributed to the well being of all black people in all areas of life. As a reflection on the achievements of our people, Alpha Kappa Alpha is presenting a feature on the Need of the black universities and colleges. Will they survive, it should be interesting to see the full scope of the black colleges as they effect us economically and socially.

We will be celebrating our Founders Day on the tenth of February. The program will be at 3:00 p.m. in Hobart Taylor Auditorium. All are welcome to attend. The sorority would like to thank all the ladies who attended the Spring Rush Party on the 28th of January. We wish you all success and happiness.

During the month we shall conduct various activities for the student body and we hope that everyone will find the time to attend.

By Beatrice Moore

Sophomore Corner

The Sophomore class of 1980, will have its first meeting of the year on February 12, Tuesday night at 7:00 p.m. in the Administration building auditorium. The Sophomore class will recognize "Black History Month" and a special guest will speak to the class on the significance of Black History. In addition, the Sophomore class officers will make several presentations of supreme interest to the class. All Sophomores are requested to be present, there are numerous activities being scheduled for the class this year and all Sophomores are

encouraged to be an involved participant.

Lura Barley, Ms. Sophomore of 1979-80 is a native of Houston, Texas. She is a Pre-Med. major, here at Prairie View. Lura, stated that being Ms. Sophomore is a most wonderful memorable honor. Further, she said, "I now have the opportunity to see what the Sophomore class is really about and really become a part of the class and help the class reach its goals at Prairie View." Surely, Lura projects the progressive image of the Sophomore Class and we certainly admire her efforts



HALFTIME SHOW — Student dance group performs during halftime at basketball games. The young males are very popular on campus.

The New Officers of ASCE

The 1980's embarks this great nation of ours into another decade and also the 80's will be the era of leaders. The American Society of Civil

Engineers is proud to have its own rendition of leaders to begin the new decade. The American Society of Civil Engineers is an engineering professional society. The officers of A.S.C.E. for the academic school year 1980-81 are:

and contributions to the class as our official representative. Let's Get With It Support Your Class Today H. Ratcliff Reporter

Michael Haynes, president; Zerrie L. Hines, vice-president; Marilyn Washington, secretary; George N. Vaughner, treasurer; Earnestine Brown, social coordinator; Harold Madison, chaplain; Michael Mitchell, reporter.

Michael Haynes is a native of San Francisco, California, a senior majoring in Civil Engineering; Zerrie L. Hines is from Houston, Texas also a senior majoring in Civil Engineering; Marilyn Washington is from Houston, Texas, a junior majoring in Civil Engineering; George N. Vaughner is a Houston, Texas native, a junior majoring in Civil Engineering; Earnestine Brown is from Houston, Texas, a junior majoring in Civil Engineering; Harold Madison is also from Houston, Texas, a junior majoring in Civil engineering; Michael Mitchell, a native of Fort Worth, Texas, a junior majoring in Civil Engineering.

The American Society of Civil Engineers (A.S.C.E.) is an organization made up of not only Civil Engineering majors, but all Engineering

Profile of A Mobster

Mega Omega Beta promotes love, peace, friendship, character, unity and scholarship. There is no one who better exemplifies this than Tom H. Carroll, president of Mega Omega Beta. Tom is a Cancer from Fort Worth, Texas and is a graduate of Paul Lawrence Dunbar in 1977 where he finished in the top 10% of his class.

Mr. Carroll will graduate in 1981 with a Bachelor of Art degree in Architecture.

Some of Mr. Carroll's university honors have been an Engineering Concept Institute Scholarship Award nominated for Who's Who Among American College and University Students, and Macho Man contest winning for 79-80 year.

Tom is an active member in the mainstream of student life here on the campus of Prairie View A&M University. It is evident in the many organizations he is a member of along with being President of Mega Omega Beta he is also the founder and charter member of the M.O.B. His other organizations are the Metroplex Club (treasurer), Council of Non-Greek Organizations (reporter) and the Student Senate where he is a member of 4 committees, Transportation Committee Chairman, Library Committee Co-Chairman, Hazzard Committee and the Alumni Hall Committee. He is a member of 2 professional societies, the Associated Student Chapter of American Institute of Architects and the American Society of Civil Engineers and is also an active member of the Junior Fellow Association, Fuller Hall Executive Council and Church of God in Christ.

Tom Carroll is a good example of the type of productive people Prairie View puts out that we all should follow.

Tom Carroll is a good example of the type of productive people Prairie View puts out that we all should follow.

LBA Going Places

The Brothers of Les Beaux Arts Black Cultural Fraternity Inc. would like to cordially invite you to their 23rd annual Black Arts Show, Thursday, February 21, 1980 at 7:00 p.m. at the Memorial Center Ballroom.

Come see what we represent, because we are involved with you.

HYO'S CHICKEN & SHRIMP

Hwy. 290 at Bus Station

LUNCH SPECIAL

- 11 a.m. - 2 p.m. Monday - Friday
- MONDAY**
 - 2 Pc. CHICKEN, Corn on the Cob, & Slaw, Coffee or Tea\$1.99
 - TUESDAY**
 - 2 Pc. FISH, Toast, Corn on the Cob & Slaw, Coffee or Tea\$2.39
 - WEDNESDAY**
 - CHICKEN FRIED STEAK, Salad, French Fries, Coffee or Tea ..\$2.39
 - THURSDAY**
 - 2 Pc. CHICKEN, Beans & Slaw, Coffee or Tea\$1.99
 - FRIDAY**
 - BURRITO DELUX, French Fries, Coffee or Tea\$1.99

Commerce Dept. Observes Black History Month

Dr. Martin Luther King, Sr. was the principal speaker opening the U.S. Department of Commerce's observance of Black History Month on February 4.

The five-day Commerce Department observance program is being sponsored in conjunction with President Carter's designation of February as Black History Month. It will feature speakers, films, musical/drama groups and a Black History exhibit in the main lobby of the Commerce Department, according to Assistant Secretary of Commerce for Administration Elsa A. Porter.

Dr. King, father of the late Dr. Martin Luther King, Jr. is Pastor Emeritus of the Ebenezer Baptist Church in Atlanta, Georgia. He is Honorary President of the Martin Luther King, Jr. Center for Social Change, is on the board of trustees of Atlanta University and Morehouse College and is a board member of the Southern Christian Leadership Conference.

Different Commerce Department agencies are sponsoring various aspects of the program, Assistant Secretary Porter said. On Tuesday, the Patent and Trademark Office will hold a 10 a.m. session in the Main Commerce Auditorium on Black inventors, with



TV PRODUCTION — Potential TV stars are getting a start as they are coached in presenting one-minute spots on Black History to be aired on Channel 11-Houston throughout February.

KPVU Radio Station Delay Explained

There is good news and bad news about your favorite local radio station, KPVU, on the campus of Prairie View A&M University.

The good news is that renovation of what will be the Communications Building is ahead of schedule of the planned opening in the fall.

The bad news is that the decision to open the station in temporary headquarters and go on the air immediately has been aborted.

So, all y'all who have been moving the dial to FM band 91.3 will have to wait a while longer.

Shirley Staples, director of the Communications Department, explains: "We had planned on being on the air by now, but that was based on the schedule of building renovation. As the work progressed so rapidly, we had second thoughts about

going to tremendous amounts of work putting in a temporary setup. There will always be bugs to work out, so we thought about the time we get all the bugs out of the temporary location, our permanent building will be ready for occupancy. Then, we would have to start moving all that expensive equipment. This way, we can concentrate better on the operation, and plan better."

She explained that the additional time will benefit tremendously in picking experienced staff people, in talking with people in the business and advertising in trade journals.

Frame Club

The Frame Club is an organization organized by the Brothers of Les Beaux Arts Cultural Fraternity, Inc. for all young men interested in becoming a member of LBA but at this time are not capable. The Frame club held it's last meeting for this month of February on Sunday, February 3, 1980 at 8:00 p.m. in 439 Fuller. If there are any questions about when the Frame Club will have their next meeting, contact Brother Victor Mitchell, President at extension 2881 (224 Fuller) or Brother Gayland Taylor, treasurer at extension 4042 (439 Fuller).

Alpha Angels

The Alpha Angel Society has elected officers for the New Year. They are — President, Pamela Shields; vice president, Shere Grant; secretary, Esther Thompson; parliamentarian, Annette Buford; reporter, Esther Thompson; treasurer, Arletha Childress; dean of pledges, Cherise Vasser; sponsor, Mrs. Elizabeth Martin.

GUARANTY BOND STATE BANK
MEMBER F. D. I. C.
Waller, Texas

Barnes Parlor of Beauty
Specializing In All Phases of Beauty Work
Also "WIGS and WIGLETS"
Pine Island Road 826-6445
Prairie View Annie Barnes

FREE PREGNANCY TESTS

- Immediate Appointments
- Confidential Counseling
- Birth Control Information
- Termination of Pregnancy

WEST LOOP CLINIC
622-2179 2909 West Loop South
Houston, Texas 77027

NEED TYPING?
75c per page
Contact GINA WOOD
Weekdays after 4:00 p.m. 857-3404

LBA News

Les Beaux Arts Black Cultural Fraternity, founded by Dr. Edison R. Fowlkes and Robert E. Calhoun on November 17, 1957. Colors, brown and gold.

Creed: We the LBA Leaders in culture, take the lead in promoting a more cultured life here on the campus among our students. We take pride in being leaders in culture because we are expected to take the lead role by the campus society. With this in mind, we the Les Beaux Arts Cultural Fraternity will strive to accomplish our mission among this campus society.

The brothers of the Brown and Gold would like to announce the following activities for the month of February.

- February 4, 1980 Smoker
 - February 10, 1980 thru
 - February 24, 1980 Showcase in Memorial Center
 - February 21, 1980 Black Arts Show — Ad-mission Free
 - February 27, 1980 Dance at the Newman Center
- So, come on out and enjoy yourself. This is also Black History Month, take pride in your heritage.
Xavier Taylor, Business Manager, LBA

Les Belle Lettres Cultural Sorority, Inc.

- Officers of the Sorority are:
- President Mary E. Mallett
 - Vice President Earnestine Brown
 - Secretary Lydia Mitchell
 - Treasurer Jennifer Forney
 - Chaplain Carolyn Miller
 - Dean Debra Johnson
 - Assistant Dean Diana Richardson
 - Sergeant at arms M. Smith
 - Stomp Master Veronica Sibley
 - Business Manager Darlene Wright

GRADUATING ENGINEERS—EARN AS YOU LEARN WITH A DYNAMIC YOUNG ORGANIZATION

The Naval Ship Weapon Systems Engineering Station, Port Hueneme, California

CIVIL SERVICE CAREER OPPORTUNITY working with experts in weapon systems technology involving in-service engineering and integrated logistics support for nearly 150 U.S. Navy ships — tactical software, digital computer, missile testing, launching systems, three-dimensional search radars, etc.

OPPORTUNITY FOR GRADUATE EDUCATION AT NEARBY UNIVERSITIES AND COLLEGES. Port Hueneme is on the scenic Pacific Coastline within a short drive to beautiful Santa Barbara and the cultural and educational opportunities of Los Angeles.

GENEROUS CIVIL SERVICE BENEFITS. FLEXTIME. DELIGHTFUL SOUTHERN CALIFORNIA COASTAL CLIMATE. Uncrowded community. Let's talk it over.

REQUIREMENTS: BS OR MS IN ENGINEERING (preferably electrical, electronics or mechanical).

Our representative will be on your campus
February 12, 1980
Or write or call for more information:

Civilian Personnel Department (Code 0610)
NAVAL SHIP WEAPON SYSTEMS ENGINEERING STATION
Port Hueneme, CA 93043
Call collect (805) 982-5073
An Equal Opportunity Employer M/F U.S. Citizenship Required

Lawrence Marshall proudly announces that Timothy "Tim" Lewis is a sales representative at Lawrence Marshall Chevrolet-Olds., Inc.

We, invite you to stop by and visit, if not on business, a cup of coffee.

"Tim" Lewis
TELEPHONE
Hempstead—826-2411
Houston—463-8484

"Supporting the Panthers"

LAWRENCE MARSHALL CHEVROLET-OLDS., INC.
P. O. Box 983 — Hempstead

The Battle of the Brands — Student Profiles Who's Winning

By Dr. Royce W. Plyler

If the average consumer were to be asked his concept of a brand, his reply would probably be that it refers to a product produced and sold under the brand of a manufacturer. Effectively, he has defined a manufacturer's brand: for example, Procter and Gamble makes Crest toothpaste, and General Motors Corporation makes Chevrolet automobiles and trucks.

However, there is a marketing phenomenon that has become increasingly significant in the past ten years — the distributor's brand. This is a brand which is owned by a distributor (wholesaler or retailer), but is produced by a manufacturer who contractually meets the product specifications of the distributor (product quality, packaging and branding — the brand name of the distributor). Sears, Roebuck, and Company markets Kenmore washing machines and dryers, but these appliances are produced by a manufacturer under an agreement with Sears. Kenmore is a distributor's brand owned by Sears and marketed only through the company's retail outlet. An important point is that most distributors' brands are at least equal in quality to competitive manufacturers' brands, and in some cases they could be of higher quality.

Some large distributors (primarily retailers) have established their own brands, thus giving them complete control over distribution policies. Generally, a distributor's brand will have a larger gross margin than a competitive manufacturer's brand. This is especially important to

supermarket chains with after-tax earnings of about 1-2% of sales (as contrasted with general merchandise chains, such as Sears, with after-tax earnings of about 3-5% of sales).

A possible future strategy of owners of distributors' brands might be to adopt an intensive distribution pattern by making their products available to the consumer in non-company outlets. Thus, such distributors' brands could be directly competitive with comparable manufacturers' brands in the same store. Possibly a counterstrategy of owners of manufacturers' brands might be to provide a larger gross margin to the dealer.

Recently some retailers, namely supermarkets, have begun to offer generic (unbranded) products. Such items (for example, canned goods and paper products) are labeled by type of product — beans, corn, paper towels, etc., and have no brand name. Presently such products have a lower price than competitive distributors' and manufacturers' brands.

A consumer profile of persons who have purchased (and indicated they will repurchase) generic products is summarized as follows from a study by A. C. Nielsen Company:

1. Larger families.
2. Skewed toward the shopper whose weekly grocery expenditure is above \$70.
3. A tilt toward above average family income.
4. A respondent who has completed college.
5. Weighted toward the largest population segment, the 35-45 age bracket.

An additional insight into brand policies is provided by this quotation:

"Middlemen's (distributors') brands have proved to be eminently competing with manufacturers' brands. However, neither group has demonstrated a convincing, competitive superiority over the other in the marketplace. Consequently, the 'battle of the brands,' which has been one of the significant marketing developments of the past decade, shows every indication of continuing and becoming more intense. The National Retail Merchants Association estimates that over 60 percent

Dr. Plyler is Assistant Professor of Business Administration, Prairie View A&M University

GRETA FULLER won a scholarship in Biology. A graduate of Worthing High School, Houston, Greta is a freshman, planning to enter medical school later. The daughter of Mr. and Mrs. Warren Fuller likes Prairie View because of the attention that each student can get from the professors. The one on one basis inspires Greta.

GRETA BONITA LAND, a graduate of Kashmere Senior High School, is a freshman majoring in Biology. The daughter of Mr. and Mrs. Anderson Land, Houston, plans to enter dental school after completing her studies here. Bonita came to Prairie View because of the emphasis that is placed on academics. And, she made the honor roll last semester.

DIANE ELAINE MOORE is a senior majoring in Chemistry. She is a native of Houston and a graduate of Wheatley High School. The daughter of Mr. and Mrs. Claude Moore was attracted to Prairie View because of the limited social environment and the academic atmosphere.

Her plans are to teach, return to school for her Masters and then enter the chemical industry.

A native of Houston and a graduate of Sharpstown High School, SHEILA PRUITT is a sophomore majoring in chemistry. The daughter of Mr. and Mrs. Obra Pruitt is planning to enter medical school upon completing her studies at Prairie View A&M University.

DOROTHY LAVERNE RINGER, Houston, a graduate of Forest Brook High School, an honor roll student with a 3.52 average last semester is a major in biology. The daughter of Mr. and Mrs. L. T. Ringer, Houston, is a freshman, planning to become a doctor. She feels that Prairie View is a positive institution that works on individual levels with each student.

of all department store sales volume is in private (distributors') brands. More than 90 percent of Sears' volume is in its own labels (brands).

"Several factors have accounted for the success of middlemen's brands. The thin profit margins on manufacturers' brands in particular, and on total volume in general, have encouraged retailers to establish their own labels. The consumers have become more sophisticated in their buying,

and their brand loyalty has declined, so consumers will consider many alternative brands. The improved quality of retailers' brands has boosted their sales. It is quite generally known that middlemen's brands are usually produced by large, well-known manufacturers. Large retailers (Sears and Penney's, for example) advertise their own brands extensively." 2

See BATTLE, Page 11



Fuller



Land



Pruitt



Ringer

American Collegiate Poets Anthology International Publications is sponsoring a National College Poetry Contest

— Spring Concours 1980 — open to all college and university students desiring to have their poetry anthologized. CASH PRIZES will go to the top five poets:

| | | | | |
|-------------|--------------|-------------|--------|-------|
| \$100 | \$50 | \$25 | \$15 | \$10 |
| First Place | Second Place | Third Place | Fourth | Fifth |

AWARDS of free printing for ALL accepted manuscripts in our popular, handsomely bound and copyrighted anthology, AMERICAN COLLEGIATE POETS.

Deadline: March 31

- CONTEST RULES AND RESTRICTIONS:
1. Any student is eligible to submit his verse.
 2. All entries must be original and unpublished.
 3. Each poem must be typed, double-spaced, on one side of the page only. Each poem must be on a separate sheet and must bear, in the upper left hand corner, the NAME and ADDRESS of the student as well as the COLLEGE attended. Put name and address on envelope also!
 4. There are no restrictions on form or theme. Length of poems up to fourteen lines. Each poem must have a separate title. (Avoid "Untitled"! Small black and white illustrations welcome.)
 5. The judges' decision will be final. No info by phone!
 6. Entrants should keep a copy of all entries as they cannot be returned. Prize winners and all authors awarded free publication will be notified immediately after deadline. I.P. will retain first publication rights for accepted poems. Foreign language poems welcome.
 7. There is an initial one dollar registration fee for the first entry and a fee of fifty cents for each additional poem. It is requested to submit no more than ten poems per entrant.
 8. All entries must be postmarked not later than the above deadline and fees be paid, cash, check or money order, to:

INTERNATIONAL PUBLICATIONS
P. O. Box 44927
Los Angeles, CA 90044

Campus Directory Corrections—United Ministries

| | | | |
|---|---------------|--|-------------------------|
| Johnson, Rev. W. Van Frazier, Bro. Victor | (1959) (1978) | Dean of the Chapel Bible Choir. Church of Christ Alex Hall | Mem. Center 2818 |
| Johnson, Elder Thomas | (1973) | Church of God in Christ | Drew Hall 3090 |
| DeGrundis, Father Robert | (1978) | Newman Association Catholic Church | Banks Hall 3925 |
| Sproat, Father James L. | (1979) | Canterbury Association Episcopal Church | Fuller Hall 2581 |
| Walker, Rev. Darnell L. | (1977) | Wesley Foundation United Methodist Church | Holley Hall 2126, 312 |
| Johnson, Mr. E. J. | (1957) | Sponsor: Baptist Student Movement | Farm Shop 2520 |
| Richardson, Rev. W. D. | () | Minister: Baptist Student Movement | Houston 2520 |
| Lewis, Ms. Joan | (1974) | Sponsor: Joy Bible Study Group | Comm. Affairs 2716 |
| Charleston, Rev. Cube | (1950) | Baptist Minister | I.E. & Tech. Bldg. 4617 |
| Haynes, Rev. Richard | (1973) | Baptist Minister | I.E. & Tech. Bldg. 4617 |
| Gordon, Rev. I. C. (Dr.) | (1969) | A. M. E. Minister | Old Dining Hall 4955 |
| Eiland, Rev. Millard F. (Dr.) | (1973) | Baptist Minister | Hobart Taylor 2356 |
| Garrett, Rev. Reginald | (1977) | C. M. E. Minister | Adm. Bldg. 2514 |

OPPORTUNITIES WITH THE VICTORIA PUBLIC SCHOOLS

The public schools in Victoria, Texas will have a limited number of vacancies for the 1980-81 school year. Interviews will be conducted on the Prairie View A&M University campus at the Placement Office on February 27. Interested parties should contact the Placement Office for an interview time.

The Victoria schools have a good salary schedule, provide free hospitalization and life insurance, and offer excellent facilities in which to work.

For additional information, write: Victoria Public Schools, P. O. Box 1759, Victoria, Texas 77901.

Beauty Texas Council — State-Wide Community Clean-Up Projects Underway

Several cleanup projects in communities around the state are now underway and will be completed this spring for entering in the 1980 "Status Citizen Awards" program, which is being sponsored statewide by the Beautify Texas Council.

"Status" citizens, according to the Council's program, are actually senior citizens age 55 years or older. The program — which is open to both individuals and organizations — recognized numerous older Texans in the past two years who are contributing to the betterment of their towns and cities.

"Senior citizens are adding immeasurably to the beautification and improvement of their communities — and we want to recognize them for it," said BTC president, George McKinney, Dallas.

The Status Citizen Awards will be presented in Kerrville on June 19, 1980 at the Thirteenth Annual Meeting of the Beautify Texas Council.

Senior citizen organizations are urged to select a project that will involve as many club members as possible, and one which will have a lasting effect on the community. Extra points are achieved by gaining cooperation, donations, etc. from others in the community — and, for giving the project(s) a theme or title.

Individuals nominated for the award must be those who have contributed significantly toward the overall beautification and lasting improvement of their community or state.

Deadline for entries is May 1, 1980, and all entries should be mailed to the Beautify Texas Council at P.O. Box 2251, Austin, Texas 78768.

Alpha Angels

President, Brother Lee R. Langston; vice-president, Brother Donald Nolley; treasurer, Brother Gayland Taylor; secretary, Brother Marion Cohen; dean of pledges, Brother Eldridge Jackson; Chaplain, Brother Ellis Davis; stomp master, Brother Siegfried Dickerson; song master, Brother David Peterson; business manager, Brother Xavier Taylor; assistant business manager, Brother Michael Ellis; director of publication, Brother Quinn Jenkins; director of public affair, Brother Victor Mitchell.

Members of Alpha Chapter are: Marion Cohen, Ellis Davis, Andre' Dickson, Siegfried Dickerson, Michael Ellis Eldridge Jackson, Quinn Jenkins, Lee Langston, Victor Mitchell, Donald Nolley, Kenneth Perkins, David Peterson, Walter Swendell, Gayland Taylor, Xarier Taylor.

The Beautify Texas Council is a statewide, nonprofit, voluntary organization dedicated to making Texas "the cleanest, most beautiful state in the nation!"

For more information on the "Status Citizen Awards" or other BTC programs and activities, please contact the BTC project director, tel: 512/475-4210.

WRITING'S ON THE WALL
A little boy came home from school and announced to his mother, "I'm in a fine fix at school. The teacher says I have to write more legibly, and if I do, she'll find out I can't spell!"

THE CAREER-OPPORTUNITY COMPARISON TEST

- Can you be working as a civilian in the most state-of-the-art environment in the world?
- Will your professional responsibilities be challenging and career-building in an entry-level position?
- Will your initiative be encouraged and your capabilities visible?
- Will you be offered a fine selection of accessible institutions where you can continue your education tuition free?
- Will the comprehensive training program you receive immediately accelerate your pay level?
- Can you be shown exactly how far your potential will take you in 5 years?

Check Out These PERFECT SCORE CIVILIAN ENGINEERING OPPORTUNITIES AIR FORCE SYSTEMS COMMAND ACTIVITIES

Electrical Mechanical Aerospace Industrial Electronic Materials

The Aeronautical Systems Division at Wright-Patterson Air Force Base has an assignment worthy of all the nights you've spent burning the midnight oil—the planning, research, development, testing and acquisition of all U.S. Air Force aeronautical weapon systems. Immediate civilian positions exist in turbine and ramjet engine technology, flight vehicle aerodynamics, structures, flight control and control design, materials research, navigation, communications, surveillance, reconnaissance and delivery. These unvalued for innovation precedents stretching



Our civilian professionals have Ohio, a super you like to breathe all around. If city style, you can have it from King's Island to his-toric Fort Meigs is tucked into a short drive. And Cincinnati with its professional sports, culture and night life is right next door.

weapons de-areas offer opportunity ...for setting ...and for your abilities.

team of pro-found Dayton, place to live. If the open air, it's hustle suits your in Dayton. Everything toric Fort Meigs is tucked into a short drive. And Cincinnati with its professional sports, culture and night life is right next door.

There's no red tape in coming on board. We can hire you without Bureaucratic delay. The Aeronautical Systems Division has been mighty good at getting places fast. Let us tell you how we can do the same for your career.

WE ARE INTERVIEWING ON CAMPUS FEBRUARY 13, 1980 IN THE PLACEMENT OFFICE. SIGN UP FOR AN APPOINTMENT OR CONTACT: Charles E. Wittchett Air Force Civilian Career Recruiting Counselor Aeronautical Systems Division

WRIGHT-PATTERSON AIR FORCE BASE, OHIO 45433 (513) 255-3945 255-3796

We Are An Equal Opportunity Employer M/F

PRATT & WHITNEY AIRCRAFT GROUP

A division of UNITED TECHNOLOGIES

will be ON CAMPUS

FEBRUARY 21, 1980

to interview candidates for attractive opportunities in HIGH TECHNOLOGY

Consult your Placement Office for degree and field of study requirements

An Equal Opportunity Employer



PRAIRIE VIEW A&M UNIVERSITY EMPLOYEES FEDERAL credit union

P. O. BOX 2606 PRAIRIE VIEW, TEXAS 77445

A Service to The Prairie View Community for Over Forty Two Years

LOANS: Share Secured 9% Annual Percentage Rate Real Estate 10% Annual Percentage Rate Personal 12% Annual Percentage Rate

SHARES: (Savings) 7% Annual Percentage Rate

OUR MOTTO: "Not for Profit Not for Charity But for Service"

OFFICE HOURS: Monday thru Friday 3:30-6:30 p.m.

PHONE: (713/ 857-4925)

OFFICE LOCATION: P. V. Alumni House



FORD

Come see our fine selection of Ford and Mercury Products



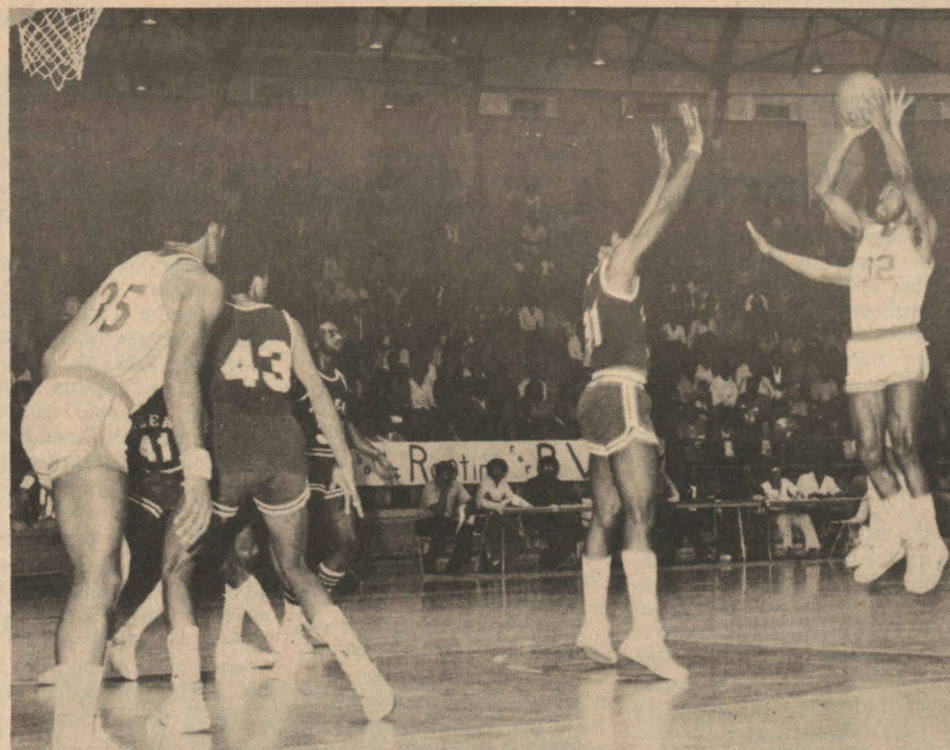
USED CARS

HEMPSTEAD FORD-MERCURY, INC.
HEMPSTEAD, TEXAS

SUPPORTING THE PANTHERS

SEE FORD'S INSIDER MAGAZINE SUPPLEMENT IN THE PANTHER THIS ISSUE

— OPEN NOW —
OPERATION CARELINE
1:00 p.m.-12 or midnight
SELF HELP COUNSELOR TAPE PROGRAM
Dial 857-2058 or 857-2059



Army vs. Navy Panthers Whip MVSU

AROTC Victor in Basketball Contest

Thursday, January 31, 1980, Prairie View Army ROTC walloped the Navy in a three-part basketball game held in the old gymnasium building during drill period at Prairie View A&M University. The teams were divided into six squads, 3 Army and 3 Navy. There were three quarters a half which allowed each squad two chances on the floor. The first quarter was played by the Army and Navy girls. It was an exciting and hilarious first quarter, however, the Army led 6 to 2.

The second quarter was powered by the faculty staff. Needless to say the Army soared for a 18 to 0 reach which made it 24 to 2 Army over Navy. The Army continued to be strong in the third quarter which was played by the boys. It ended with a runaway score of Army 30 Navy 16 at halftime.

The second half was full of hectic emulation on the Navy's part, but for the Army the first half was an example of the second. They dribbled on to win with a final score of Army 74 and Navy 37.

Let's give special applause to Lt. Batson of the Navy for his 100% physical exertion, and

By David Harris

Prairie View came off of a four game home losing streak (two of which were heart breakers, one to Jackson State, the other one to rival T.S.U.) to defeat Mississippi Valley State University 65-40.

Prairie View never trailed in the game. The closest MVSU came, was when the score was tied at 2-2 and again at 4-4.

Larry Hagan then scored with 17:07 to go in the first half to give Prairie View a 6-4 lead, which they never relinquished.

Al Reynolds and Madison Lane were surprised staters and they measured up to the task by contributing considerably to the victory. With the score 22-12 PV, Madison Lane stole the ball on a fast break and connected on a beautiful behind the back pass to Al Reynolds for the lay up to give PV a 24-12 lead. PV continued to play tough defense and shot well from the outside. Prairie

View went into half time leading 36-24.

Reginald Spivey scored the first two baskets of the second half, one being on the opening tip assisted by Anthony Robinson to give P.V. a commanding 40-24 lead.

Madison Lane and Al Reynolds continued to play a good game, offensively and defensively. Reginald Spivey dominated the rebounds.

This was a total team effort in which most of P.V.'s players contributed in. Madison Lane was replaced by Clarence Hill who preceded to pick up where Madison Lane left off by hitting a 20 foot jump shot with 13:24 remaining in the game.

Prairie View went into a semi-stall with 13:07 to play. With time running out Madison Lane hit a jumper at the top of the key to give P.V. a 50-36 lead with 11:35 to play. Prairie View coasted the rest of the way to an easy 65-40 conference victory.

Pantherettes Lose to JSU Tigerettes

By JoAnn Alderson

The Prairie View Pantherettes hosted the Jackson State Tigerettes last Friday evening in PV's little dome. Despite the diligent efforts by the Pantherettes the outcome was all in favor of the Jackson State Tigerettes.

The Tigerettes took a very shocking first half lead by the score of 34-11. In the early beginning of the second half

Lt. Berry for being strong and of good courage. Let's also commend Sgt. Brown of the Army for his fine job as high point man.

the Pantherettes came out shooting fast and accurate. But despite all the good will they could not control the fancy ball handling of the Tigerettes.

The Tigerettes high score persons were Lori Malbroue with 20 points and Pam McDonald with 16 points. The high point person for the Pantherettes was Debra Gardner with 10.

The final score of the contest was Jackson State Tigerettes 64 and Prairie View Pantherettes 34.

Upcoming Athletic Events

SATURDAY, FEBRUARY 9
BASKETBALL (women) — Prairie View in Houston Recreational Tournament
BASKETBALL (men) — Paul Quinn College at Prairie View, Little Dome, Prairie View, Texas, 7:30 p.m.
TRACK (men) — Prairie View in Mason-Dixon Games, Louisville, Kentucky.

MONDAY, FEBRUARY 11
BASKETBALL (men) — Prairie View at Alcorn, Lorman, Mississippi, 7:30 p.m.

THURSDAY, FEBRUARY 14
BASKETBALL (men and women) — Southern, Louisiana at Prairie View, Little Dome, Prairie View, Texas (women 5 p.m.-men 7:30 p.m.)

FRIDAY, FEBRUARY 15
TRACK (men) — Prairie View in NAIA national Indoor championships, Kansas City, Missouri

GOLF — Prairie View vs. Texas Southern and St. Thomas (triangular), Houston, Texas

SATURDAY, FEBRUARY 16
TRACK (men) — Prairie View in NAIA national Indoor championships, Kansas City, Missouri

TRACK (men and women) — Prairie View in Brooks Invitational Indoor Track meet, The Astrodome, Houston, Texas

MONDAY, FEBRUARY 18
BASKETBALL (men and women) — Wiley College at Prairie View, Little Dome, Prairie View, Texas (women 5 p.m.-men 7:30 p.m.)

TENNIS — Blinn Junior College at Prairie View.

TUESDAY, FEBRUARY 19
BASKETBALL (men and women) — Prairie View at Huston-Tillotson, Austin, Texas, (women 5 p.m.-men 7:30 p.m.)

THURSDAY, FEBRUARY 21
BASKETBALL (women) — Prairie View in Texas AIAW Division II tournament, San Marcos, Texas. Times and opponents to be announced.

FRIDAY, FEBRUARY 22
BASKETBALL (women) — Prairie View in Texas AIAW Division II tournament.

GOLF — Prairie View at Texas Lutheran (dual), Seguin, Texas.

NAIA Indoor Championship Entrants

COLUMBUS, TEXAS — Lester Coleman (5-7, 157, senior) in mile relay and 600-yard run.

DALLAS, TEXAS — Kerry Houston (6-0, 160, junior) in 60-yard dash, 60-yard hurdles, and distance medley relay. Derrick King (6-1, 185, junior) in 60-yard dash and 60-yard hurdles.

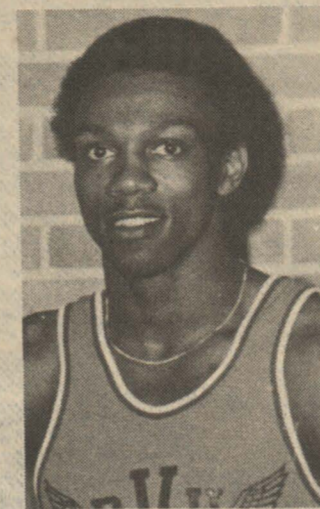
HOUSTON — Alfred Gilbert (6-0, 156, senior) in 60-yard hurdles. Ray Roberts (5-10, 140 junior) in 2-mile relay and distance medley relay. Joe Johnson (6-1, 155, senior) in mile relay and 600-yard run. Clifton Terrell (5-11, 156, senior) in mile relay and 400-yard dash.

BIRMINGHAM, ALABAMA — Alvin Scott (5-10, 148, sophomore) in 400-yard dash and mile relay.

DETROIT, MICHIGAN — Jody Cleveland (6-1, 145, freshman) in 2-mile relay and distance medley relay.

ECORSE, MICHIGAN — Evans White (6-3, 160, senior) in 800-yard run and 2-mile relay.

INKSTER, MICHIGAN — Terrance Ross (6-2, 175, freshman) in 2-mile relay and distance medley relay.



EVANS WHITE Leads Men's Track Team



COACH ROBERT KINNEY Another Golf Championship?

Golf Team Expecting 3rd Title in Four Years

Two of the past three years Prairie View has won the Southwestern Athletic Conference golf championship. That other year, 1978, the Panthers were second.

Coach Robert Kinney is expecting no less of his crew this time.

"This is a pure golf team!" Kinney said. "It took about three years to build this team and we are at a point where we want to be right now!"

And that point is atop the Southwestern Athletic Conference, winning the conference championship by 23 strokes (630-653) over Texas Southern last year and by 40 strokes (939-979) over Texas Southern in 1977.

Kinney is hoping to be atop the SWAC standings when the conference tournament rolls around again but is not expecting it to be as easy this time as in those past two years. The conference has gone to a

point system this year to determine its champion, awarding points for each tournament entered sponsored by a Southwestern Athletic Conference team member. The points then double at the conference tournament, Kinney pointed out.

Expected to pull this years team to the top are three players who made the all conference team a year ago — juniors Charles Burleson from Denver, Colorado, Charles Hopkins from Forest Hill, Maryland, and Gary Walters from Paris, Texas.

John Camp, a sophomore from Cincinnati, Ohio, was named to the NAIA District 8 all star team.

"We'll have a lot of quality both on the golf course and in the classroom," Kinney said. "We have been fortunate that we have been able to recruit not only outstanding golfers but outstanding students too!" Kinney imposed a 3.0 grade point average on his team and last year eight of the nine players reached that goal in addition to playing outstanding golf.

The golfers open the season February 8 in a dual match against Texas Southern in Houston. The quest for the tournament championship starts in earnest February 27-29 in Baton Rouge in the SWAC President's invitational golf tournament.

Panther Track Team Enters NAIA Indoor Championships

By Henry Hawkins

Evans White, senior distance runner from Ecorse, Michigan, will lead an 11-man contingent in quest of the NAIA national Indoor track championships in Kansas City, Missouri February 14-16.

White, one of the top distance runners in the United States and an Olympic hopeful, will be in quest of his third straight individual championship in the 880-yard run.

If successful, he will be the 10th individual to win an NAIA individual championship three years running.

Other three-time winners in the NAIA Indoor have been Ricky Davenport of Southern, Louisiana in the 60-yard hurdles in 1976, 1977 and 1978; Prairie View's Ray Geter in the 600-yard run in 1972, 1973 and 1974; John Mason of Ft. Hays, Kansas in the mile run in 1966, 1967 and 1968; Van Nelson of St. Cloud, Minnesota in the 2-mile run in 1966, 1967 and 1968; Jim Herring of Wisc-Parkside in the 2-mile walk in 1975, 1976 and 1977; Hubert Butler of Jackson, Mississippi in the pole vault in 1975, 1976 and 1977; Andy Steben of Occidental, California in the pole vault in 1967, 1968 and 1969 and Frank Gross in the shot put in 1976, 1977 and 1978.

White won the 880-yard run in 1977 in a time of 1:54.16 and the 1979 crown in a time of 1:51.69. He also set the NAIA Indoor meet record with a time of 1:51.24 in the preliminaries of the 1979 meet.

As a freshman White logged a third place finish in the 880. Panther coach Hoover Wright emphasized that it won't be a one-man Panther show in the NAIA meet.

"We are taking enough people to win it, if they run up to their potential!" he said.

The Panthers last won the national crown in 1968 and have finished second in 1969, 1970 and 1972.

Last year the Panthers finished fourth behind Jackson, Mississippi, Abilene Christian, Texas and Southern Louisiana.

Other Panther national finishers returning are Alvin Scott, sophomore from Birmingham, Alabama, a fifth place finisher in the 440-yard run; Houston seniors Joe Johnson and Clifton Terrell, third and sixth place finishers in the 600-yard run.

The mile relay team finished third last year and returns

1980 Golf Team Roster

| Player | Ht. | Wt. | Class | Hometown (High School) |
|------------------|-----|-----|-------|-------------------------------------|
| Charles Burleson | 5-9 | 135 | Jr. | Denver, Colo. (East) |
| Charles Hopkins | 6-0 | 180 | Jr. | Forest Hill, Md. (Bel Air) |
| Gary Walters | 5-8 | 142 | Jr. | Paris, Tx. (Paris) |
| John Camp | 6-1 | 173 | So. | Cincinnati, Ohio (Summit City, Day) |
| Patrick Flowers | 5-8 | 146 | So. | Jackson, Miss. (Lanier) |
| Johnny Garcia | 5-6 | 148 | So. | Corpus Christi, Tx. (Moody) |
| Darrell Knight | 6-1 | 170 | So. | Denver, Colo. (East) |
| Jessie O. Means | 5-7 | 150 | Fr. | Mobile, Ala. (Davidson) |
| Norman Carter | 6-2 | 180 | Fr. | Beaumont, Tx. (Hebert) |
| Danny Williams | 5-8 | 140 | Fr. | Chicago, Ill. (South Shore) |



MOSTEK WILL BE ON CAMPUS

A world leader in MOS integrated circuits and systems, headquartered in Dallas, Texas, will be interviewing here soon. Check with the placement office for more information.

Mostek, 1200 W. Crosby Road, Carrollton, Texas 75006. We are an equal opportunity employer. m11/v.

MOSTEK

**If you can pass this test
Then you may be able to
EARN \$100 A MONTH
While attending College**

TEST

CHECK ONE

- Yes No
- () () A citizen of the U. S.
- () () At least 18 years old
- () () A student in good standing in the second year of college ("C" average)
- () () In good physical condition

If you checked yes to all of the above . . . Stop by or call:
Captain JOHN R. THOMAS, USMC
 Naval Reserve Officer Training Corps
 Prairie View A&M University
 Prairie View, Texas 77445
 Tel: (713) 857-2258/Houston call (713) 226-4989

**NROTC
COLLEGE PROGRAM
PVAMU**

Patricia's Fine Jewelry

Hempstead 1216 Austin
 WE DO REMOUNTING AND
 MANUFACTURING ON PREMISES
 BULOVA and SEIKO WATCHES

PRESCRIPTIONS - DRUGS

Where You Get More Than Just
 A Welcome and Good Service

CITY DRUG-HEMPSTEAD

826-2496 W. W. Wilkes, Owner

HEMPSTEAD CLEANERS

DRY CLEANING
 Alterations — Laundry Service
 Phone 826-3798 Box 893
 Hempstead, Texas
 1-DAY DRY CLEANING SERVICE

*PV Students Are
 Welcome
 at*
**VARIETY
 VALUES**
**13th and Austin
 HEMPSTEAD**