

Prairie View A&M University

Digital Commons @PVAMU

---

PV Standard Newspapers

Publications

---

11-1959

## The Prairie View Standard - November 1959 - Vol. L No. 3

Prairie View Agricultural and Mechanical College of Texas

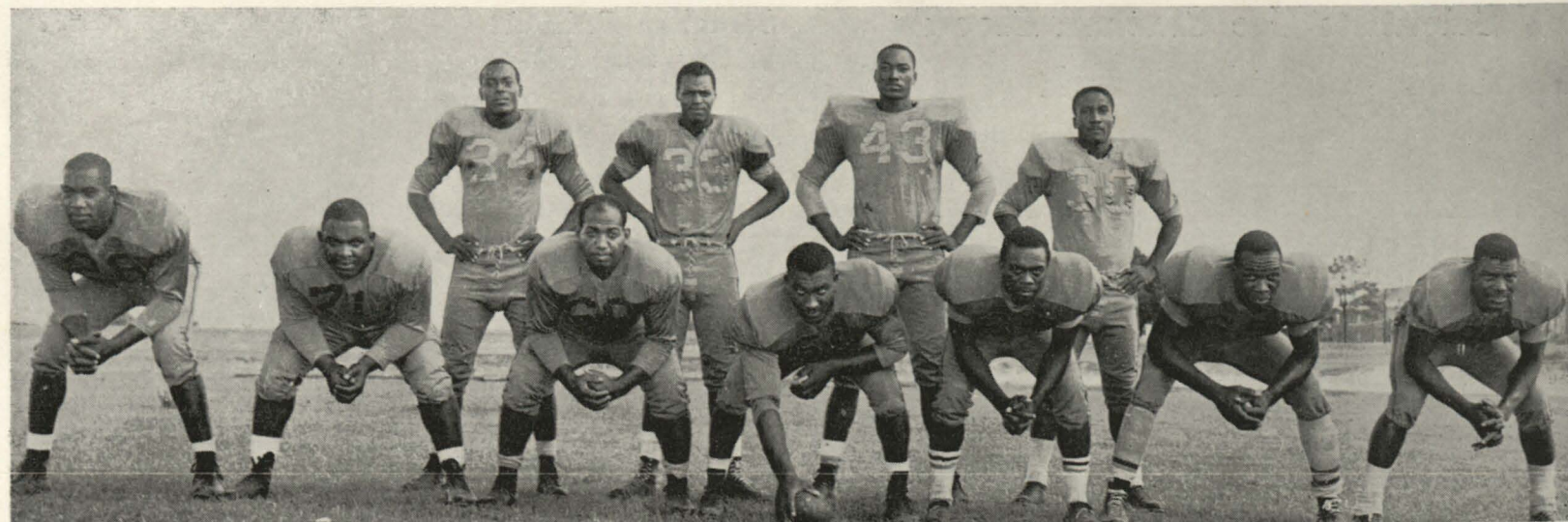
Follow this and additional works at: <https://digitalcommons.pvamu.edu/pv-newspapers>

---

### Recommended Citation

Prairie View Agricultural and Mechanical College of Texas. (1959). The Prairie View Standard - November 1959 - Vol. L No. 3., *Vol. L No. 3* Retrieved from <https://digitalcommons.pvamu.edu/pv-newspapers/202>

This Book is brought to you for free and open access by the Publications at Digital Commons @PVAMU. It has been accepted for inclusion in PV Standard Newspapers by an authorized administrator of Digital Commons @PVAMU. For more information, please contact [hvkoshy@pvamu.edu](mailto:hvkoshy@pvamu.edu).



THE PANTHERS FIRST UNIT — The Line (L to R) Frank McKee, Jimmy Hunt, Arthur Sewell, Charlie Malone, Gentris Hornsby, Quincy Foster, James White. Backfield: Clifton Gilliard, Robert Shaw, David Webster, Arthur Seals.

### Panthers Win First Five Games Easily; Rated Top in Nation

Early November finds the Panther football squad undefeated and untied, with five easy victories under its belt. They have dropped Jackson College, Allen University (non-conference), Texas Southern, Grambling, and Arkansas, and tied with Southern University for first place in the Conference.

Members of both the NCAA and NAIA, these national athletic organizations rank Prairie View at the top in several areas of performance. The Panthers are number 3 in scoring in NCAA reports for small colleges in the nation, and NAIA ranks them number 3 in team rushing offense. When all game reports are in, the Panthers will probably take the top position.

Several national sports agencies like the publication "Illustrated Sports"—rate Prairie View as number one among the nation's small colleges.

#### Cagers Preparing For Georgia Tourney

Coach Leroy Moore's charges are about shaped up for the 1959-60 Cage season and will soon test their strength in the Sixth Annual Georgia Invitational Basketball Tournament scheduled at Morehouse College on December 3-5.

#### Panthers Tromp TSU 34-16 in Cotton Bowl

DALLAS—The fighting Panthers of Prairie View A. and M. College walloped Texas Southern University's Tigers 34-15 Monday night in the Cotton Bowl before more than 12,000 who watched this 35-year old State Fair of Texas Football Classic.

It was Prairie View's third straight victory over their sister state institution from Houston, and their 26th in the age old classic in which they serve as host team.

Although predicted to win, the defending Southwestern Conference Champions found a rough job cut out for them in pushing back the determined Tigers. It was a see-saw battle all the way until the final period when quarterback David Webster broke the Tigers back with touchdown heaves to ends John Farrington and later to Frank McGhee to move comfortably ahead.

#### Panthers Surprise Grambling 35-6

SHREVEPORT, LA. — Playing their second straight Monday night State Fair engagement, the Prairie View Panthers pulled a major upset in walking away with a 35-6 victory over the Grambling College Tigers.

Jack White led the Panther scoring to be followed by David Webster, Edgar Johnson and Charles Warner. Co-Captain Gentris Hornsby figured in two scoring plays, both blocked punts. Charles Fisher blocked the first and Hornsby covered and second was blocked and covered by the All-American guard.

PINE BLUFF, ARKANSAS — In their first straight high scoring victory, the fighting Panthers of Prairie View A. and M. College battered the Arkansas A. M. and N. Lions 28-0 in a major Southwestern conference battle.

Prairie View's depth continued to be a decisive factor as three Panther units figured in the scoring led by quarterbacks David Webster, Richard Ryan and Joel Smith. Webster initiated the first two touchdowns with identical pass plays to the left and then right. Jack White caught the first and lateralled to Charles Warner for a 35-yard TD run and Frank McGhee caught the right end pass and laterred to Tommy Williams who galloped 15-yards for paydirt.

Ryan passed to Charles Fisher for the third tally and Smith took a quarterback roll out play for 20-yards to notch the final score. Lester Porter kicked the first conver-

sion, Webster passed to McGhee for two points and Smith hit McGhee for the closing points.

#### PV Student Serves As Co-Chairman of 'Regional' Council

Scott Westbrook, a senior student at the College, will serve as co-chairman of the Southwest Regional Conference, Student YMCA-YWCA scheduled at Mt. Wesley, Kerrville, Texas on December 27 through January 2.

A Houstonian and student leader on campus, Mr. Westbrook will share honors with representatives of Texas A. and M., the University of Texas and Oklahoma State University.

The purpose of the regional conference is to provide opportunities for the free open search for truth, the challenge of new ideas, the classification and renewal of one's faith, for a deeper understanding of the student YMCA and YWCA and the responsibilities of Christian leadership on the campus and in the world, for sharing in a community of work, play, study and worship.

# THE PRAIRIE VIEW STANDARD



FLOWERS FOR MISS P. V. — Representatives of the Dallas Alumni Club are shown presenting a bouquet of flowers to Miss Prairie View during halftime ceremonies at the State Fair Classic.

#### Research Committee Continues Study of Texas Negro Youth

The College Research Committee is giving further study to problems of adjustment of Texas Negro Youth.

Special attention is being given to the image Negro youth have of themselves, and to causes and effect. The study is a continuation of behavioral research, dealing specifically with attitudes, concerns, interests, and behavior. The Committee has worked for three years with the Cooperative Study, a product of the Hogg Foundation, University of Texas, the Texas Education Agency and several colleges and universities of the state.

A major assumption of the committee is that Negro Youth are affected very adversely by the image they have of themselves, and that self conception is a result of the experiences of youth. Many implications for better teaching in home and school are to be found in the study objectives.

Research is also being considered in the field of Housing. A Housing Bureau is in the process of development at the College which has areas of research, education and information.

#### American Education Week to be Observed

Annual observance of American Education Week is scheduled for November 8-14. The theme for this year's observance is, "Praise and Appraise Your School."

#### PV-Southern Tilt May Again Decide SWC Grid Title

Predicting football results is a serious business, but it does appear safe to look ahead. And in doing so, all the Panther fans can see ahead is the mighty Jaguars of Southern University.

D-Date is November 28 at Baton Rouge. Student leaders are now circulating ballots on which PV-ites can indicate if they would like to charter busses to attend the 1959 Southwestern Conference grid climax. It looks as if several buses may make the trip.

The Jaguars whipped the Panthers 18-13 in 1957, the last time Prairie View visited the Louisiana Team. It was the first Jaguar win over the Panthers since 1951. They bowed to the Panthers five straight years before 1957, and Prairie View returned to the victory column last year, beating their number one opponent 20-14 in Houston.

In game statistics, Southern's great threat is quarterback Cyrus Lancaster who is ranked third in the conference in passing and in total offense. Lancaster is also one of the leaders in punting. In early November, the Jaguar Cats have gone undefeated, with a record of six wins, no ties or defeats. The Prairie View record at the same time was 5 wins, 0 ties, 0 defeats.



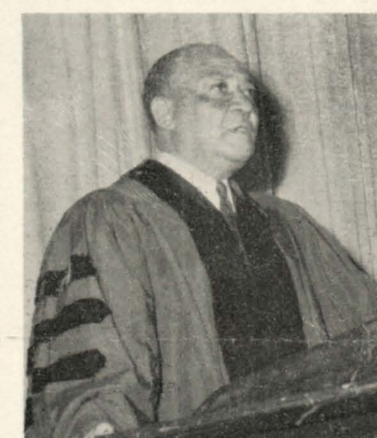
MRS. MARY VRONAN GIBSON

#### Author to Keynote English Emphasis

Mrs. Mary Elizabeth Vronan Gibson, author of the best seller "See How they Run" will be the keynote speaker for English Emphasis Week scheduled November 16-20.

A dynamic speaker and a scintillating personality, Mrs. Gibson will address the student body and faculty on the Theme—"Effective English: A Mid-Twentieth Century Requisite."

Mrs. Vivienne H. Smith of the English department is chairman of the English Emphasis Observance.



MINISTERS CONFERENCE SPEAKER — The Reverend Robert S. Mosby, of Austin, delivered special address to student body in connection with conference for Texas Ministers held on October 20-21.

#### Student Government is Working at PV.

Of'times student government is merely a fine sounding word, still on paper and the hearts of students, but not so at Prairie View. Student government here has become to have real meaning, only after about eight years of trying to make it go. It started last year with an able Student Council whose members were determined to sacrifice time and energy for a real campus need. With many of the problems of reorganization now over, this year's student leaders are working like a clock, and everybody is awfully happy about prospects for the future.

Prairie View students today are concerned with every facet of campus life which affects them in any way. Student leaders are busiest in the area of activities. College spirit is up higher than ever in history, and many student projects which have failed to materialize before, (like the girls drill squad) are now about to become a reality. Leaders are now pushing for a college marching band, and this, too, may not be too far in the making.

The prospect of a Student Union building has played its part in the improvement of student life. So has the forward look of administrators and advisers who have helped lead the way. Temporary offices of the council and student activities will soon be replaced with adequate facilities in the new building.

Student decorum is also improved generally, just as student government contributes to better citizenship.

#### Thanksgiving Holidays Start on November 25

Thanksgiving holidays will begin at noon on Wednesday, November 25. Classes will resume at 8:00 A.M. on Monday, November 30.

### Schedule of Homecoming Activities November 20-21-22

FRIDAY, NOVEMBER 20	
7:30	P.M. BOARD OF DIRECTORS AND EXECUTIVE COMMITTEE MEMBERS President's Conference Room
6:45	P.M. MOTION PICTURE ("Imitation of Life") Auditorium-Gymnasium
9:00	P.M. BON FIRE AND PEP RALLY ... Parade Grounds
SATURDAY, NOVEMBER 21	
12:01-4:00	A.M. PIGSKIN PREVIEW ... Recreation Center Alumni Association
4:00-7:00	A.M. BREAKFAST DANCE ... Recreation Center Alumni and Visitors
4:00-7:00	A.M. BREAKFAST DANCE ... Auditorium-Gymnasium (Students)
10:00	A.M. GENERAL ALUMNI MEETING Administration Auditorium
11:30	A.M. HOMECOMING PARADE (Down Third Street to Blackshear Field)
2:00	P.M. FOOTBALL GAME ... Blackshear Field Prairie View A. and M. vs. Wiley College (Special Pre-Game and Half-Time Presentations)
8:00	P.M. STUDENT DANCE ... Auditorium-Gymnasium
SUNDAY, NOVEMBER 22	
11:00	A.M. SUNDAY WORSHIP SERVICE Auditorium-Gymnasium
	Alumni Sponsored
7:00	P.M. ALUMNI VESPER PROGRAM Concert—Emmitt Scott High School Band Auditorium-Gymnasium

### The Prairie View Standard

NOVEMBER 1959

### News of Prairie View A. and M. College



The Science Building

### Thirty Prairie View Students Listed In Who's Who Among Nation's Colleges

Thirty students have been accepted to represent Prairie View in WHO'S WHO AMONG STUDENTS IN AMERICAN UNIVERSITIES AND COLLEGES for the current year.

The students were selected on the basis of scholarship, participation and leadership in extra-curricular activities and citizenship. Recommendations were received from both the student body and the faculty members. An effort was made to include students from all departments of the school.

Among the students selected were twenty-one seniors, eight juniors, and one grad student.

Students selected are as follows: George Brown, Agriculture, Prairie View; Elray Bundage, Elementary Education, Oklahoma City, Oklahoma; Billy Deramus, Business Education, Timpson; Edison Fowls, Agriculture, Terrell; Mæ Garcia, Sociology, Dallas; Samuel Gbadeyan, Poultry, Nigeria, Afri-

### 'Face of India' Is Campus Forum Topic

A lecture and exhibit of materials on "Face of India" was presented at a forum sponsored by the department of Economics, Geography and Social Science at Prairie View A. and M. College.

Dr. G. T. Ridgel, dean of instruction, Wiley College, Marshall, Texas was the guest lecturer for the occasion. The speaker spent more than a year as a professor of social science at Tata Institute of Social Science in the city of Bombay, India.

The presentation included slides showing the culture, geography and economic status of the people of India, handicraft works, metals and other items brought back from India. Also appearing on the program were Earline Swisher, who presented the geographical setting, William Hill, master of ceremonies, and Dr. John D. Holmes, who gave a summary statement.

ca; Merlie Gilmore, Business Education, Oakwood; Olivia Gray, Business Education, Dallas; Nevarro Harris, Mathematics, Carthage; Wilton Harris, Business Administration, Austin; Johnny R. Jackson, Biology, Hearne; Anne F. Jacob, Home Economics, Henderson; Margie Nell Johnson, Nursing, Tyler; Jimmy E. Lydia, English, Fort Worth; Rogers McCalister, Mechanical Engineering, Malakoff; Henry McDuffy, Biology, Shepherd; Cleopatra McGill, Biology, Hillsboro; Kennie Mayes, Radio TV, Dallas; Lloyd D. Mayfield, History, Dallas; Hazel H. Muse, Business Education, Tyler; Ronald O'Neal, Music, Terrell; Eddie L. Pryor, Music, Amarillo; Cecil Strickland, Agriculture, Pittsburg; Dorothy L. Thompson, Elementary Education, Dallas; Pearl M. Warren, Business Education, Tyler; Kathryn Weisner, Elementary Education, Karnack; Gwendolyn Williams, Dietetics, Calvert; George L. Wooley, Electrical Engineering, Houston; Floyd E. Yancy, Agriculture, Karnack; and Evelyn Zackary, Sociology, Houston.

### Mrs. Lucille O. Evans Memorial Fund Set

A total of \$500 was donated in gifts from friends for the Lucille O. Evans Memorial Fund, Dr. E. B. Evans announced recently.

According to President Evans the fund is being used for gifts to Mrs. Evans' Church, St. Francis Episcopal at Prairie View. Mrs. Evans, along with others, was instrumental in establishing the church in the community and it was her request that gifts for the church be given in lieu of flowers.

Plan Now to Attend the PRAIRIE VIEW BOWL  
January 1, 1960  
Houston, Texas

### Principals in Alumni Homecoming Plans



MRS. TOMMIE S. CLAY, '49  
Miss Homecoming

### Houston Teacher Named Miss Homecoming '59

Mrs. Tommie S. Clay, '49 a homemaking teacher at Jack Yates Senior High School, Houston, has been selected by the 1949 Reunion Class for MISS HOMECOMING—1959. Mrs. Clay will be presented during several alumni activities during the homecoming season.

The attractive housewife and teacher was a member of the honorary society during her career at Prairie View, and also held the offices of secretary and president of the New Homemakers of America. She is presently a member of the Board of Directors of the General Alumni Association.

Her husband Donald Clay is also a PV-ite. They have one daughter, Donna Paulette Clay, age 9 1/2 years.

### ALUMNI NEWS

Dr. Charles L. Rhodes, former PV student, recently announced the opening of his office for the general practice of Chiropractic at 416 Borth Avenue, S. E. in Grand Rapids 6, Michigan.

Paris, Texas Principal T. G. Givens (1912) has been cited by the citizens of his community for outstanding service over a period of 47 years. Mr. Givens who also received the masters degree from the University of Colorado, is principal of Gibbons High School. He is a native of Washington County.

Mr. William Evans, husband of Mrs. R. L. Bland Evans, ('36), Dean of Women at the College, died of a heart attack early in October while enroute to a hospital in Oklahoma City. A former assistant superintendent of Maintenance at the College, Mr. Evans had moved to Oklahoma and was very successful as a salesman and mortician.

Final rites were held in Oklahoma City and in his home at Perry, Florida.



DR. I. T. HUNTER, '26  
Chairman, Alumni Board



MR. G. W. ADAMS, '32  
President, General Alumni Association



DR. ROSCOE W. LEWIS  
President, Local Alumni Club

### The Prairie View Standard

Published monthly during the school year except July and August by Prairie View A. and M. College, Prairie View College Branch, Hempstead, Texas.

Entered as second-class matter, March 2, 1911, at the Post Office at Prairie View A. and M. College Branch, Hempstead, Texas under the act of March 3, 1879.

Acceptance for mailing at special rates of postage provided for in section 103, Act of October 3, 1917; authorized July 13, 1918.

E. B. EVANS, Editor-in-Chief  
C. A. WOOD, Managing Editor

Printed by  
The Prairie View A. and M. College Press

### PV Scientists Use Chicken Blood Types as Tool in Research

The importance of blood types in humans has been long recognized and the information used in human medicine for many years.

Few people are aware that chickens have blood types, and even fewer people realize the value of blood typing as used by the geneticist to develop better laying and meat strains of poultry. Blood grouping or typing, a brand new poultry genetic tool, now aids breeders in developing inbred lines of chickens even more precisely than ever before.

Technicians can determine whether a chicken has a certain blood type by observing the way a drop of blood reacts when mixed with certain reagents. Scientists estimate that there are an infinite number of different blood gene combinations (or blood types) in chickens. In-breeding reduces the number of types drastically, and makes it possible for breeders to use blood grouping as an effective research tool. Birds with a certain type in one line (family) of chickens may combine well with birds having a certain type in another line.

The chickens that are produced as a result of the various blood combinations must be tested for performance. This is where the Department of Poultry Husbandry, Texas Agricultural Experiment Station Substation No. 18, Prairie View A. and M. College, enters the picture. For the past four years, the Poultry Department here at Prairie View has been cooperating in a Regional Research Project involving two Experiment Stations located in Louisiana and Georgia. The blood grouping and breeding under the supervision of Professors W. F. Krueger, population geneticist, and R. C. Fanguy, geneticist; is conducted at the main station, A. and M. College of Texas, and day-old chicks are shipped from there to the above mentioned stations where they are wing-branded, recorded and performance-tested.

### PV Grads Represent At Chicago Meeting

Two Prairie View A. and M. College graduates have been selected to represent the College at the University of Chicago's Darrow Centennial Celebration scheduled for November 24-28.

Both Science teachers, they are Thomas J. Cleaver '46, of Anderson High School, Austin; and Hattie Palmer Owens '52, Sam Houston High, Huntsville. All expenses of the two in-service teachers will be paid by the National Science Foundation, who is underwriting the expenses of the one-week science celebration.

Leading scientists over the nation will meet together to discuss matters of biological and cultural evolution, including the evolution of life, of man and of the mind.

### Somalian Official Is Guest of College

A representative of the African country of Somalia is visiting Prairie View A. and M. College during November to study programs of the Texas Agricultural Extension Service.

He is Omar Mohamud Hassan, an assistant in agricultural extension in the administration of Somalia. The visitor who is touring the United States as a guest of the State Department lists his address as Lugh Ferrandi, in Somalia.

Mr. Hassan arrived at Prairie View on November 1. He is scheduled to spend one week each in four counties—Smith, Harrison, Fort Bend and Brazoria—observing methods used by county agents to assist farm families in improving crop and livestock production and other activities in extension work.

### FOOTBALL RECORD TO DATE

Jackson College	52-6
Allen University	67-12
Texas Southern	34-15
Grambling College	35-6
Arkansas A. M. & N.	29-0
Texas College	23-11



UN DAY OBSERVED—President of the Political Science Club, Mr. Lawrence Thomas, greets Mr. Henry Niblock, British Counsel of Houston, who served as guest speaker during United Nations Week Observance at the College. The club sponsored several other activities during the week.

### Garden Club Sponsors Fifth Harvest Festival

The Prairie View Garden Club will sponsor its fifth annual Harvest Festival on November 9 and 10. The theme of the event is "Holiday Arrangements."



STUDENT LEADERS — This large group of students, all leaders in campus life returned to the College early in the year to help with programs of orientation for new students. Many of the students listed in Who's Who on campus can be identified in the group.



TEXAS MINISTERS — A part of the delegation of Texas Ministers who attended a two-day conference at Prairie View recently are shown. The conference was sponsored by the campus "Y" organizations to inform the clergy of social and economic factors in the community.



SCABBARD AND BLADE — Speakers and guest at the recent ROTC Scabbard and Blade banquet included (L to R) Major Levon Smith, PMS&T, Captain Walter Redd, President E. B. Evans; Mr. Clifton Vincent, Instructor; Registrar L. C. McMillan and Cadet John McNeil.