

Prairie View A&M University

Digital Commons @PVAMU

PV Standard Newspapers

Publications

11-1958

The Prairie View Standard - November 1958 - Vol. XLIX No. 3

Prairie View Agricultural and Mechanical College of Texas

Follow this and additional works at: <https://digitalcommons.pvamu.edu/pv-newspapers>

Recommended Citation

Prairie View Agricultural and Mechanical College of Texas. (1958). The Prairie View Standard - November 1958 - Vol. XLIX No. 3., *Vol. XLIX No. 3* Retrieved from <https://digitalcommons.pvamu.edu/pv-newspapers/204>

This Book is brought to you for free and open access by the Publications at Digital Commons @PVAMU. It has been accepted for inclusion in PV Standard Newspapers by an authorized administrator of Digital Commons @PVAMU. For more information, please contact hvkoshy@pvamu.edu.

THE PRAIRIE VIEW STANDARD

Vol. 49

Prairie View A. & M. College, Prairie View Branch, Hempstead, Texas, November, 1958

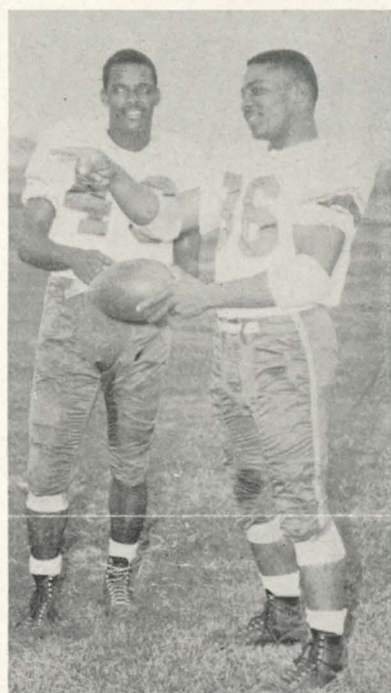
Number 3

Poultry Students Visit Feed Mills

Students of the School of Agriculture enrolled in Poultry Nutrition and Feeds and Feeding (Animal Husbandry) courses at Prairie View A. and M. College were guests of Uncle Johnny's Feed Mills in Houston, Wednesday, October 22.

The feed manufacturing firm was celebrating its 60th Anniversary by sponsoring an open house and special features. The week-long observance of the past coincided with the launching of a new era of operations for the firm, for it recently completed a change over to all mechanized, pushbutton equipment.

The thirty-nine students were conducted on a tour of the Mill's complete facilities. They heard an address by the company's president, Mr. L. F. Van Stone who pointed up the increased importance of technical agricultural training and "Agribusiness." Refreshments were served and souvenirs were given to each student.



PLAN STRATEGY FOR SOUTHERN — Co-captains Calvin Scott and Clemon Daniels appear to be discussing game tactics—no doubt for the great battle with Southern on November 29 in Houston.

Panthers Wallop Grambling, Arkansas, And Texas College

The Panthers gained top position in the Southwestern Conference following decisive victories over Grambling 44-6; Arkansas AM & N, 37-13; and Texas College 43-0.

The October 25 victory over highly rated Grambling was a surprising turn in conference events as was the November 8 blanking of Texas College. The latter placed the Panthers in a position of the team to be watched, both in conference play and in the National Negro College football race.

Archie Seals, a sophomore speed-demon from Sealy, Texas received considerable attention over the period covered by these games having scored three times at Grambling and twice against Texas. His sensational 98-yard kick-off return against Texas will be long remembered by PV fans. Seals and co-captain Calvin Scott were tied with nine TD's each following the Texas College affair.

The season's standing was as follows:

Set for Houston

PV-Southern Battle Groomed As SWC Championship Match

Always a key game in the strong Southwestern Conference, the November 29 battle between Prairie View A. and M. and Southern University will doubtlessly be a major factor in the 1958 title race.

Moved from Prairie View to Houston's Jeppesen Stadium because of the campus-wide Thanksgiving holiday recess, the big game is also shaping up as a key in the national Negro college football picture. Florida A. and M. and Prairie View are mentioned most often for the national grid crown, but always in the picture are the powerful Jaguars who incidently dropped Tennessee State 23-14 on November 8.

Prairie View and Southern are ranked 1 and 2 in the conference standing, with 5-0-1 and 5-1-0 season records. Fairly evenly matched, the Panthers lead the conference in team rushing with a game average of 231.1 yards, but the Jaguars have the edge in total team offense with 361.6 yards in game average.

Prairie View has used the ground route for most of its scoring while the Jaguars have been more effective with both passing and rushing.

Southern's passing artist John Thomas is tops in the league total offense, but Prairie View's Calvin Scott and Archie Seals lead in individual scoring with nine touchdowns each.

Only Wiley College's homecoming battle stands between the Panthers and this special closing date with Southern. The sixth place Wildcats also tangle with Southern a week before, putting the Methodist College in an enviable position as possible spoilers. Southern tackles the Florida A. and M. Rattlers the week before which could be both good or bad for their closer with Prairie View.

Pre-sale tickets are now on sale at the college and at regular ticket centers in Houston. The game is scheduled at 8:00 P.M. and will feature special pre-game and half-time programs.

Langston University Selected for PV Bowl Opponent, New Years Day

Langston University of Oklahoma has been selected to oppose the Panthers in the Annual Prairie View Bowl, the College Athletic Council announced.

The Lions, a former power in the Southwestern Athletic Conference, is now equally as powerful in an Oklahoma league. They have engaged only one SWC team this season, downing Texas College 20-7 on October 17.

This will be the 31st playing of the holiday classic in Houston. Unique among the New Years Day Bowls, Prairie View A. and M. always serves as host and invites

some of the major Negro College teams in the nation.

Purpose of the classic is to provide local holiday entertainment and to bring to the area some of the finest in football talent. The Panthers have engaged Texas Southern University Tigers in the Bowl for the past two years. The 1958 Bowl game ended in a 6-6 deadlock. Langston has been the opponent in the holiday game twice before, in 1934 and 1942. The Panthers edged the Lions in both of these encounters.

Prairie Views all-time record in the Bowl game is 18 wins, 9 defeats and 3 ties.

| | W | L | T | Pct. |
|-----------------|---|---|---|------|
| Prairie View | 5 | 0 | 1 | .950 |
| Southern | 5 | 1 | 0 | .857 |
| Grambling | 5 | 2 | 0 | .714 |
| Texas College | 5 | 2 | 0 | .714 |
| Jackson College | 4 | 2 | 1 | .643 |
| Wiley College | 3 | 3 | 0 | .500 |
| Texas Southern | 3 | 4 | 0 | .479 |
| Arkansas | 2 | 5 | 0 | .286 |

| Conference Games | | | | |
|----------------------|---|---|---|-------|
| | W | L | T | Pct. |
| Prairie View | 3 | 0 | 0 | 1.000 |
| Texas College | 3 | 1 | 0 | .750 |
| Southern University | 2 | 1 | 0 | .667 |
| Wiley College | 1 | 1 | 0 | .500 |
| Texas Southern Univ. | 1 | 3 | 0 | .250 |
| Arkansas | 0 | 4 | 0 | .000 |

Students to Hear Brice Trio Concert

The concert and lecture series presents the Brice Trio in a performance on November 17. The Music Club and Student Life Committee are sponsors.

YMCA Leadership Institute Planned For December 5-7

The annual "Y" Leadership Institute scheduled December 5-7 is expected to attract nearly a thousand young people from the Southern states including Arkansas, Louisiana, Oklahoma and Texas.

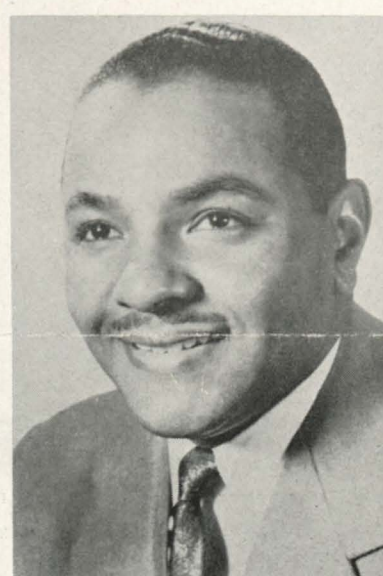
Dr. Harry V. Richardson, President of Gammon Theological Seminary, Atlanta, Georgia, will serve as keynote speaker for the occasion. He holds degrees from Western Reserve University, Divinity School of Harvard University and Drew University. He has traveled throughout the world on evangelistic missions and has written widely for outstanding magazines and church publications. The former Tuskegee Institute Chaplain, is the author of "Dark Glory," a study of the rural church, published in 1947, and a contributor to the book, "The Christian Way in Race Relations," 1948.

Other leaders in the three day conference will include YMCA secretary W. E. Hogan, Dallas; W. S. Douglass, Tyler; and a host of leaders coming from the communities of the state. President E. B. Evans, who serves as chairman of the State-wide committees on Community Development and Youth Leadership, and Dr. J. L. Brown, conference director, will lead a large group of Prairie View participants in the annual meet.

Designed to train young people for community leadership, the Institute will include youth represented in the high school junior and senior Hi-Y and Tri-Hi-Y and the Gra-Y and Tri Gra-Y.



"Y" INSTITUTE — Keynote speaker for the Annual "Y" Conference is Dr. Harry V. Richardson, President Gammon Theological Seminary, Atlanta, Georgia.



ENGLISH EMPHASIS—Carl T. Rowan, author, lecturer and staff reporter for the Minneapolis Tribune keynoted English Emphasis Week Observance.

Importance of Good English Usage Is Stressed Throughout the College

English Emphasis Week was observed at the College from November 10 through 14. The theme was "Effective English, The Basis of Growth and Understanding."

Keynote speaker for the observance was Carl T. Rowan, author, lecturer and staff reporter for the Minneapolis Tribune. Addressing the entire student body, Mr. Rowan spoke on the problems of worldwide distrust and America's stake in the future. "America's future is my future," he emphasized.

The Minneapolis reporter has traveled widely throughout the

world and is the author of "South of Freedom," "The Pitiful and the Proud," and "Go South to Sorrow."

Students of English produced a special program presented Monday evening entitled "Motifs and Meaning," which featured a speech choir, music and reciters. A film session Tuesday centered around the background of works of William Shakespeare. Excerpts from the Baylor University Experimental Production of "Hamlet" were shown.

Dr. John S. Lash, chairman of (Continued on Page 2)

Increase Seen In Scholarship Aid to Students

A summary of scholarship aid to Prairie View students this year shows a definite increase in the number of persons receiving assistance, increased amounts, and many more donors than in past years.

As the costs of education increases, more and more community groups and business and industrial concerns are giving assistance to youth in their quest for higher education. Almost \$20,000 is going to Prairie View students this year from such groups. A total of ninety-five students find their education possible through these special scholarship grants.

Regular state scholarship grants for tuition are made to numerous other students and some students receive direct assistance from organizations in their communities. Together these would add up to a large total the number of students being assisted.

The encouraging trend is the increase in donors of student scholarships. Only a few years ago, the list of available scholarships to Prairie View students was pitifully small. The Jesse H. Jones Agricultural Scholarships and the Mary Gibbs Jones Home Economics Scholarships, established in 1946, were among the first substantial grants to students. Houston Endowment, Inc. has continued the Jesse H. Jones Scholarship programs, adding Nursing Education in 1918, and this year, Fine Arts.

The present list of fifty different organizations giving students aid includes foundations, business, industrial firms, professional and fraternal groups, school PTA's, churches and Alumni Clubs. There are a few individual donors.

CONSTRUCTION OF STUDENT CENTER TO BEGIN IN FEBRUARY

Preliminary plans have been completed for the construction of a Student Center at Prairie View A. and M. College.

Final drawings are in process and are expected to be completed in December. Funds for construction of the million dollar facility to house student activities and services at the College have been ap-

proved by the Board of Directors of the A. and M. College System, and work will probably begin in February.

The new air conditioned Student Center will replace temporary structures now in use. It will bring together several auxiliary services for students under one roof, such as the campus snack bar, cafeteria,

barber and beauty shops and the Post Office.

Its main use however, is to provide adequate facilities for supervised student recreation. The two-story building will contain lounges, offices and conference rooms for student organizations, rooms for meditation, music, television and records, and table games. A large

Ball Room will accommodate banquets, dances, and a little theater, or can be adjusted for large or small group meetings.

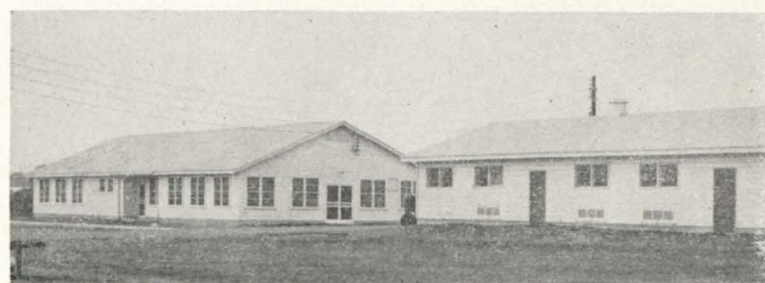
Offices of the College's Alumni and Ex-students Association will be housed in the new Center. Persons responsible for student acti-

(Continued on Page 3)

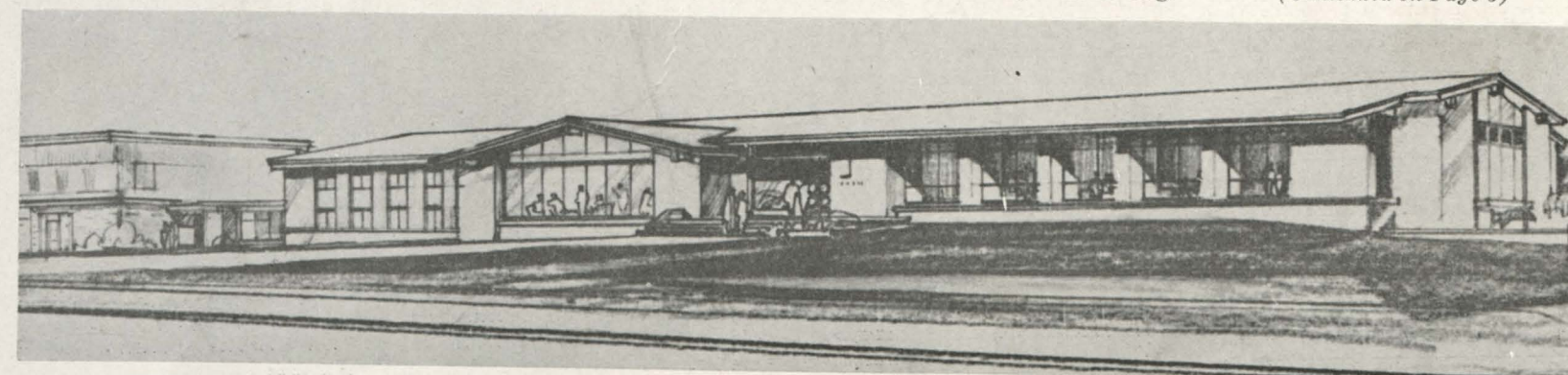
The Prairie View Standard

NOVEMBER 1958

News of Prairie View A. & M. College



Poultry Center, School of Agriculture



STUDENT CENTER — A PV dream becoming a reality. (Architects drawing by Adams and Adams of San Antonio, Texas.)

'Y' Membership Drive is Success

According to Margaret Chenier, Chairman of the Prairie View A. and M. College YWCA Membership Committee, and Leroy Enggram, Chairman of the YMCA Membership Committee, the membership drive was most successful in that the YWCA Reported 341 members and the YMCA reported 213 members in its victory meeting last Sunday on the College Picnic grounds.

Five hundred fifty-four members participated in the victory meeting with Dr. Anne L. Campbell, Chairman of the YM-YWCA Advisory Board and Advisers Nathaniel Hardin, Samuel Montgomery, Mrs. Lee C. Phillip, and W. Van Johnson, Executive Secretary, Student Christian Associations.

Performances of Students Studied By Faculty Group

The faculty of the School of Arts and Sciences heard a discussion on the topic "Psychology as it Relates to Student Performances" during the October meeting of the group.

Mrs. Carrie B. Coss, professor of education, headed the discussion panel which included Dr. W. L. Cash and H. J. Brown. Other members of the staff participated.

PV Observes Veterans Day

A special convocation was held at the College on November 11 in observance of Veterans Day.

Speaker for the occasion was Colonel Raymond Darrah, chief of the ROTC Division of the Fourth Army.

The program was sponsored by the college ROTC unit with the Veterans Club participating. Veterans of World War I received a special tribute during the services.

PV Graduate Employed At Boeing Aircraft

Earl Charles Jackson, a Mechanical Engineering graduate (1955) has been employed in his field at Boeing Aircraft Company in Seattle, Washington at a starting salary of \$520.00 a month.

The Prairie View Standard

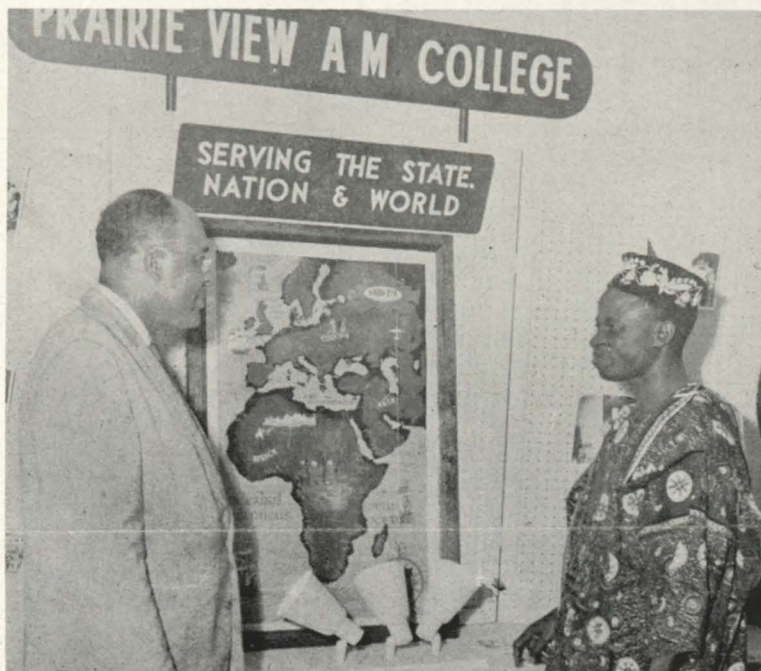
Published monthly during the school year except July and August by Prairie View A. and M. College, Hempstead, Texas under the act of March 3, 1879.

Entered as second-class matter, March 2, 1911, at the Post Office at Prairie View A. and M. College Branch, Hempstead, Texas under the act of March 3, 1879.

Acceptance for mailing at special rates of postage provided for in section 103, Act of October 3, 1917; authorized July 13, 1918.

E. B. EVANS, Editor-in-Chief
C. A. WOOD, Managing Editor

Printed by The Prairie View A. and M. College Press



INTERNATIONAL RELATIONS — Dean G. L. Smith and Nigerian Theophilus Aribisala posed before a college exhibit on PV services in Africa. Mr. Aribisala is Senior Agricultural Officer in the Department of Agriculture for West Nigeria, visiting the College to observe programs in agriculture and home economics.

Public Health Program Will Have New Quarters; Activities Planned

The Public Health program of the Division of Nursing Education will be housed in new quarters as soon as renovations are completed in the old high school building.

Funds have been appropriated to convert the building for regular clinical use and for offices, classrooms and storage. Dean C. L. Wilson, School of Engineering, is in charge of renovations and improvements of the building.

The Waller County Negro Health Council, which operates as a liaison with the college health program, held its first meeting of the executive committee recently. The Association is now assisting financially with five county patients who are receiving special treatment at the Galveston Medical Center. One mental case is also being handled by the association and another case pending.

Projects planned by the group include: investigation of the possibility of the Blood Bank; Christmas gifts for hospital patients; and

Good English Usage

The Division of Humanities, Texas Southern University, lectured Wednesday on the topic, "Certain Aspects of the Development, Effectiveness and Literary Merit of Negro Fiction." Thursday evening's topic was "Getting the Most from Motion Pictures." Guest speakers were Paul G. Schlessinger and James Bauer, members of the radio-television department, University of Houston.

The dramatic players directed by Horace J. Bond presented the three-act play, "You Can't Take it with You" on Friday evening to close the busy week of special activities. A Book Bazaar and numerous classroom activities were added to the week of English Emphasis.

ALUMNI NEWS

The Alumni office reports that the Association now has a total of twenty-five organized clubs located throughout the nation.

Five clubs organized recently include:

- Victoria P. V. Club
- Mr. C. O. Bradley, Representative
- Beaumont-P. V. Club
- Mr. Joseph Barnes, Representative
- Galveston-P. V. Club
- Mr. A. W. McDonald, Representative
- Austin County-P. V. Club (Sealy, Texas)
- Mr. I. H. Woodfork, Representative

Prairie View Bay Area Alumni Club
Mr. Leonard Wallace, President
Berkeley, California
Plans are now underway to establish clubs in Austin, Texas and Orange, Texas.

A brochure including activities and information about the Association is now available. Persons interested in receiving copies should write to: Mr. Samuel R. Collins, Executive Secretary, P. O. Box 2331, Prairie View, Texas.

Recent visitors to the campus were Captain and Mrs. William Downey and their children. Captain Downey, (1951), and family were enroute to Germany where he is assigned with the Armed Forces for the next four years.

Ag. Graduate Has Fascinating Job As Physical Science Aid for USDA

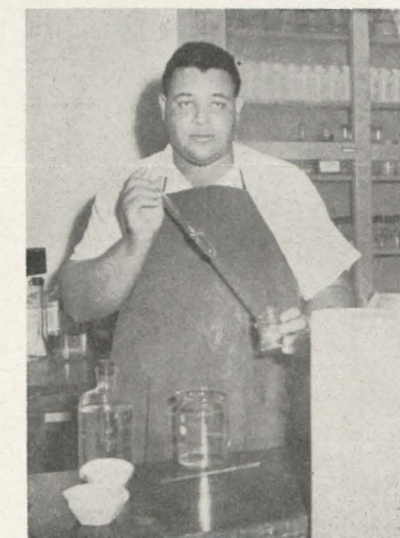
Gillespie C. Wilson, a 1955 graduate from the School of Agriculture, has been employed by the Agricultural Research Service at the Southwestern Great Plains Station, Bushland, Texas. The position is civil service, under the United States Department of Agriculture.

Designated as a Physical Science aide, Mr. Wilson is a part of a technical team studying soil compaction. His duties include the collection and preparation of soil and plant samples for analysis and the completion of these analyses under the supervision of a Soil Scientist (Chemist). These analyses include total nitrogen by the Kjeldahl method, nitrate nitrogen, exchange capacity and exchangeable ions in soils using the flame photometer for determination of sodium and potassium.

This work is important in characterizing soils in an effort to

determine the chemical processes involved in the formation of compacted layers at the depth of plowing on many Southern Great Plains soils.

A native of Weimar, Mr. Wilson is married to the former Lodema Cook, a physical education major at the College. They have two daughters.



GILLESPIE C. WILSON—PV training paying off in New Civil Service position here in Texas.

Nursing Division Adds New Staffer

A new instructor in Medical and Tuberculosis Nursing has been added to the staff in the Division of Nursing Education at Prairie View A. and M. College.

She is Amelia LeVoy Clarkson, R.N. of Houston, Texas, who is now affiliated with the college and the Veterans Hospital in Houston. Her employment with Prairie View was effective last September 1.

Miss Clarkson received her R.N. and Bachelor of Science in Nursing Education in 1953 from Meharry Medical College, Nashville, Tennessee. She has completed residence work for the M.S. Degree in Nursing Education at the University of Texas.

The new Prairie View instructor taught medical surgical nursing at Meharry Medical College for three years. Before coming to the new position, she was in charge of the Nurses Pediatric Ward of the Texas University Medical School, Galveston.

Former PV Prof Speaks On Science

Dr. Walter M. Booker, head of the Department of Pharmacology at Howard University, Washington, D.C., was the speaker at the Biology Department Seminar held recently at the College.

A former head of the College Biology Department, Dr. Booker is a nationally known researcher in his field. He has recently spent a year of research work at Brussel.

Professor C. H. Nicholas serves as chairman of the Biology section and the Science Department Seminar.

Football Dinner Planned By Staff

One of the fine traditions developed over the years at Prairie View has been the Annual Steak Dinner for the football team and coaches.

Scheduled this year for November 25, the affair is a voluntary "stag" sponsored by men of the college staff. Faculty members purchase two dinners, one for himself and one for a member of the football team. The program is built around a lot of fun from staffers and players.

The theme is always . . . "Beat Southern."

Construction

The new structure will be erected to adjoin the three-year old wing which is now the college exchange store and hotel. The college exchange building was constructed earlier in order to meet very pressing needs, but was designed to become a part of the Student Center unit. The modern store for student shopping needs, hotel accommodations upstairs and a large conference room complete the additional facilities of the Center.



NURSERY SCHOOL — Home Economics students receive training in Child Development through their participation in Nursery School activities such as the Halloween Party pictured above. Thirty-nine youngsters, age 2-5 attend the campus school.

School of Agriculture Experiments With Tomatoes and Pasture Crops

Prairie View Agriculturists are trying to develop tomatoes which will mature early, produce high yields, have good color, and with resistance to disease, cracking, puffing and sunburn.

Another group seeks to aid food production by finding an ideal pasture crop also with high yield and with drought resistance and ability to withstand competition from weed invasion.

Both projects are part of the Texas Agricultural Experiment Station research at Sub-station No. 18 located on Prairie View's campus. Guided by local staff in the School of Agriculture, the experiments are also a part of on-going research throughout the state, aimed at production of better agricultural products.

In the case of tomatoes, the experiment station has launched a breeding program to develop varieties suitable for the trade. Three notable varieties from this work are Texto 1, Texto 2, and Weshaven. Texto 2 is especially well adapted to the "green wrap" trade in East Texas and Weshaven is well suited to South Texas. Other

newer breeding lines are under test performance at the College with promising results.

Also under tests are varieties of tomatoes which will set fruit at high temperatures, such as prevail from June through August. Notable varieties from the work are Summerset, Summer Prolific and Hotest. While these varieties are not as large and attractive as the main crop line, they fill a real need for summer and fall crops when tomatoes are not plentiful.

The department of Dairy Husbandry this Fall started 99 acres of Coastal Bermuda as a part of its pasture and hay production program. Results with Coastal Bermuda (in the area of Prairie View) as a hay and permanent pasture crop have been gratifying under normal growing conditions and overwhelming under irrigation.

Experiments included a method of propagation different from the standard, and current inspections indicate promising results. Should these tests prove satisfactory, the cost of establishing Coastal Bermuda will be economically practical for any livestock farmer.

High Scholarship Encouraged in Industrial Education

A special drive to encourage high scholarship and general excellence in students has been initiated by the Division of Industrial Education at Prairie View A. and M. College.

Titled the "Pursuit of Excellence," the drive began on October 27 and is scheduled to continue throughout the 1958-59 school term. The week of October 27-31 was designated as the initiation period during which time special emphasis was placed on the need for pursuing excellence in every task performed by teachers and students of the division.

The opening campaign included plenty of fanfare such as wearing of tags, pep rally, banners and placards, special lectures by staff members, and endorsement by college officials. Rewards are offered for student excellence in a long list of gold key awards and cash prizes. Key awards are available to students with the highest scholastic average in the division and to students earning grades of "A" in sequence of two courses in English, Science, Mathematics, Chemistry, Physics, History and Political Science.

Announcement of the John Martin Drafting Award was made which includes professional drawing sets to students earning "A" grades in drawing classes. Other awards will include the outstanding Industrial Education student award; the most representative student award (in specialized areas); and awards to students who make the college honor roll.

Public Health

included health education and fund raising.

Attending the recent planning session were Dr. C. A. Wood, chairman; Dr. E. B. Perry, clinician; Mrs. Sedelia Wilson, public health coordinator; Mrs. A. E. Charleston, secretary-treasurer; Mrs. Merender Lilly and Mrs. L. V. Jones, Hempstead representatives.



THE ROTC PICKS A QUEEN — The four charming coeds pictured with Lt. Col. Thomas H. Wright and Cadet Col. Carl Young, Belton, Texas (right) are Helen Tilley, Jacksonville, Texas; Frankie Mays, Fort Worth, Texas; Artie Osborne, Spencer Oklahoma; and Earlene Whittenberg, Fort Worth. Miss Frankie Mays was picked by the cadets to serve as ROTC queen for 1958-59.