

Prairie View A&M University

Digital Commons @PVAMU

PV Panther Newspapers

Publications

9-14-1982

Panther - September 1982 - Vol. LVII, NO. 1

Prairie View A&M University

Follow this and additional works at: <https://digitalcommons.pvamu.edu/pv-panther-newspapers>

Recommended Citation

Prairie View A&M University. (1982). Panther - September 1982 - Vol. LVII, NO. 1., *Vol. LVII, NO. 1* Retrieved from <https://digitalcommons.pvamu.edu/pv-panther-newspapers/211>

This Book is brought to you for free and open access by the Publications at Digital Commons @PVAMU. It has been accepted for inclusion in PV Panther Newspapers by an authorized administrator of Digital Commons @PVAMU. For more information, please contact hvkoshy@pvamu.edu.

1982-83 Academic Year Underway

Prairie View A&M University opened its 94th Academic

Year on August 23 with the Annual Fall Faculty Renewal Conference.

Classes in all schools and colleges are moving into full swing and student activities aid

programs are beginning to move on schedule. The Panthers football team will

play its second away-game of the season Saturday against Southwest Texas State in San

Marcos. The young team, coached by new mentor — McKinley, lost their opener with Stephen F. Austin 17-0 last week.

A highlight of the opening weeks is the planning and promoting the election of student senate members and officers and the group's participation in the search for the President of Prairie View A&M.

Athletic Season Ticket For All Sports On Sale

Season Package Is Attractive Offer

A "season ticket package" will be made available for Prairie View athletic fans for the 1982-83 season, announced Dr. Marion Henry, athletic director recently.

The \$35 season ticket will cover four home football games, 11 home basketball games and the Prairie View Spring Relays, Dr. Henry explained.

The home games covered on the ticket include the October 16 clash with Texas Lutheran, the November 6 homecoming tilt against the University of Arkansas-Pine Bluff, the November 13 collision with Alcorn and the November 20 season finale against Texas Southern in Rice Stadium.

Home basketball games covered on the ticket include games scheduled November 27 against Huston-Tillotson, December 13 against Houston Baptist, December 15 against Paul Quinn, January 5 against Nicholls State, January 8 against Alabama State, January 10 against Southern, January 15 against Mississippi Valley, January 17 against Jackson, February 12 against Alcorn, February 14 against Grambling and February 26 against Texas Southern.

The 53rd annual Prairie View Spring Relays is scheduled for March 25-26.

In addition to the season ticket package, prices of individual games have been increased, said Leon English, athletic business manager.

Individual football tickets have been increased from \$4 to \$5 for adults and \$2 to \$3 for public school students.

For basketball the new price structure is \$3 for adults, \$2 for middle and high school students and \$1 for elementary school students. English said. That represents an increase of \$1 for adults and middle and high school students. English said.

Doors opened for students on August 28 when residence halls and dining facilities opened and orientation activities for new student began. Parents Day was observed on August 29 and regular registration began on August 30 and continued throughout the week.

Enrollment figures were not available at press time but it appeared earlier this week that final enrollment figures would be somewhat close to the 5,000 students recorded this time last year. Payment of fees — tied with the problems of securing financial aid — has slowed the registration process considerably.

Filing Deadline Set For Student Senate Candidates

The Student Senate Task Force assigned to establish and hold a student body election has released a full schedule of activities and special functions to accomplish this goal.

A general assembly meeting was held on campus on September 2 in the University Fieldhouse. Potential candidates used the occasion to answer questions and become

better acquainted with students in general. The Election idea was put forth in an effort to pull PV students together and learn to work in the common interest.

September 10th is the date set as the deadline for potential candidates to turn in the applications screening of the candidates will take place on September 10-15. Campaign

week is September 17-22, and September 22 is Election Day.

The newly elected Senate president will serve as a member of the Search Committee to locate and recommend someone for the position of President of the University.

See photos related to this subject on other pages of this issue.

Bulletin

President Reagan vetoed on August 28 a \$14-billion supplemental appropriations bill, containing \$217 million in Pell and Supplemental Grants for this school year. More than one-million students face an aid cut off or reduction, many right here at PV A&M.

The American Council of Education is part of a 20-group Higher Education Coalition presently mounting a veto over ride campaign. You may want to join this Action Committee in telling about financial problems for students, parents and campuses, if veto is sustained.



The PANTHER

PRAIRIE VIEW A&M UNIVERSITY

Volume 57
Number 1

PRAIRIE VIEW, TEXAS

September 9-14,
1982



STUDENT TASK FORCE — Student Senate leaders, Geron Twinguest, chairman (right), Trisha Bursey, (Miss PV) along with advisor Rev. W. Van Johnson are part of a Task Force assigned by Acting President Ivory V. Nelson to oversee the upcoming Senate election on September 22. A student representative will serve on the Search Committee assignment to select the next President of the University.

Career Festival Set September 22

In spite of the economic downturn, this year's Twelfth Annual Career Festival will have over 100 representatives from approximately 75 companies and government agencies who will be guests of the Division of Career Education and Placement on Wednesday, September 22, from 9 to 4 p.m. in Alumni Hall.

Students, faculty and staff members from each major and department are invited to attend to explore employment possibilities and to get the facts on career trends and future opportunities as they visit the career booths located on all three levels of Alumni Hall.

"It should be a top priority of each student to set aside the time to visit with this year's Career Festival participants," says Brutus N. Jackson, Division Director who predicts a 20 to 30 percent decrease in

the number of companies and agencies who will come to the campus to recruit this year.

This week's visit to the campus will provide the only opportunity many of these representatives will have to interact with students. Tightening recruitment budgets and the state of the

economy will not allow for more than one campus visit.

Because of these reasons, it is imperative that students take this opportunity to obtain up to date information that will improve their chances of securing a place in the future workforce.

Panthers Face Southwest Texas Saturday at San Marcos

NCAA Division II and Lone Star champion Southwest Texas States is the next opponent for the Prairie View Panthers. The Bobcats trimmed Lamar, 30-7 in their opener as opposed to Prairie View's season opening loss to another Lone Star Conference foe Stephen F. Austin, 17-0.

Bobcat coach Jim Wacker said prior to the season that Lamar might be the toughest game. Southwest Texas easily disposed of Lamar and faced their second straight NCAA Division I-AA foe in Prairie View.

"We have enough speed and
See PANTHERS, Page 10



GOATS ARRIVE — Photographer Godwin's daughter, Jennifer got an early glance and an opportunity to welcome the new crop of goats arriving at the International Dairy Goat Research Center on campus.



AUGUST COMMENCEMENT — Approximately 300 graduates participated in the processional and other exercises of the 1982 Summer Commencement held in August in the University Fieldhouse.

PV Goat Research Center First in U.S.

Prairie View A&M University took a giant step on its way to becoming national leader in dairy goat research as the first 52 animals arrived at the International Dairy Goat Research Center at the north end of the campus.

"We are the only such research center in the United States," brags Dr. Frank Pinkerton, the complex director. "Our first research project was underway in less than an hour after their arrival from

California and it concerned feeding and nutrition."

Although by early '83 you will be able to buy goat milk and a little later various cuts of lamb, the research center is primarily a teaching tool and one that disseminates its research findings.

"All of our findings will go out through technical bulletins, research journals, short courses and demonstrations, and foreign and domestic personnel training programs," Dr. Pinkerton explained.

The Texas A&M University System recently turned over two buildings of the complex which will eventually include more than a dozen structures... even a maternity ward... and a goat population of 500.

Also an important part of the 12-acre complex are the milking stalls where six animals will be milked simultaneously with the liquid pumped into a 600-gallon, temperature controlled stainless steel tank.

When Dr. Pinkerton and his staff aren't in the research rooms or stainless operating rooms, they might be found in any number of conference rooms of the center.

"We have already a waiting list of local, national and international visitors who want to see our center, and compare notes, so I am sure that we will keep the conference rooms busy," he said.

The goats from California include the Alpine and Nubian breeds with the females outnumbering the males 50-2. This was the first of four shipments from five different California farms expected by September 15.

In addition to the more than a dozen buildings, the completed center will be staffed by Ph.D.'s or professionals with commensurate training in ruminant nutrition, reproduction, veterinary science, engineering and dairy manufacturing.

Joining Dr. Pinkerton and his university staff as the first outside specialist hired is Tatiana Stanton, a research specialist with a number of years experience in goat research in this country and abroad.

By Jack Weeks

Never tell people how to do things. Tell them what to do and they will surprise you with their ingenuity.

—Gen. George S. Patton



CONSTRUCTION OF CENTER NEARS COMPLETION — Checking blueprints of Goat Research buildings are (from left): Sam Martin, project manager from College Station; Professor Frank Pinkerton; Architects Richard Edwards and Bob King and PV physical plant officer Sam Brown.

Pershing Rifles, Safety and Security Department Who Are We? 857-4823 or 857-4922

We, the brothers of the National Society of Pershing Rifles, welcome freshmen and returning students to this school year ('82-83). We would like to introduce our fraternity to you. We are a military fraternity, our purpose is to assist young men who are planning to enter the Army, Air Force, Navy and Marines. We assist them in areas of self-respect, drill with arms, military leadership, discipline and brotherhood. We also prepare our brothers both physically and mentally for military and non-military life styles. When founded in 1894 our main purpose was to prepare men for the military.

PERSHING RIFLEMEN:
Michael Bables, Oree Broomfield, Michael Brown, Michael Colbert, Anthony Colter, James Creeks, Jr., Reginald Dones, Charles Dunton, Daniel Gibson, Leslie Harvey, Daniel Hatchett, Eddie Hawkins, Cornelius Hayes, John James, Jewl Johnson, Carvel Kigh, Dwight Martin, Jerry N. Massie, Charles McLemore, Lawrence Pace, Manuel Perez, Quinton Reed, G. E. Robinson, Karl Rosborough, Hiawatha Scott, John Keith Smith II, Kelly Stepney, James Stevens, Jr., Roland Taylor, Clinton Ward, and Jimmy Williams.

THE CHALLENGE IS HERE!

By James Stevens, Jr.
Non-Greek Counsel
Representative

BRANNAN'S SUPERMARKET

MEATS
OF QUALITY
372-3639
220 Cherry
Waller

The members of the Safety and Security Department at Prairie View A&M University welcomes the Faculty/Staff and Students for 1982-83 school term. We will do our utmost to provide a safe environment for you, however we can only do so with your support and cooperation. You the Faculty/Staff and Students must furnish the Department with additional eyes and ears. You are urged to report any criminal acts, acts of vandalism, suspicious persons, cars and any other activity of a suspicious nature. We must get away from the business of that's Security's problems. I don't want to get involved or I don't want to get involved or I don't want to get them in trouble. Protecting the University Campus is a community problem with campus Security having the primary responsibility. As for not wanting to get involved, you are already involved each time there is a theft or vandals destroy property you are deprived of the use and also the cost of replacement is passed on to you. Remember your Security Department must have the support and cooperation of the University Community to provide maximum protection.

M-M BEAUTY SUPPLY For All Your Hair Needs

- | | |
|--------------------------|------------------|
| Growers | Relaxers |
| Rollers | Rods |
| Oil Sheen | Curl Activator |
| Ear Rings | Moisturizer |
| Neutralizers | Setting Lotion |
| Gloves | Combs |
| Conditioners | Curl Kits |
| Hair and Scalp Treatment | |
| Shampoos | Hair Color |
| End Wraps | Wigs |
| Curling Irons | Clips |
| Falls | Hair Accessories |

— Courteous Service —

Open 9:00 a.m. to 6:00 p.m.

715 3rd Street — Hempstead
Across from Dairy Palace
Telephone: 826-6341

All-Faiths Chapel Plans On The Way; Site Changed

Thirty-three ministers from all over the state joined Prairie View A&M University officials recently to plan the university's 25th annual Ministers Conference scheduled for the first Tuesday in February, 1983.

Dr. Ivory Nelson, acting university president who hosted the conference, took the

opportunity to announce a change of site for the All Faiths Chapel; that \$579,000 has been raised toward a total of \$640,000 price tag for the chapel, and that the Texas A&M University Board of Regents let contracts for the architects.

The Rev. W. Van Johnson, dean of chapel, said the site location change was needed and hopes for groundbreaking about the time of the Ministers' Conference.

"Our old location at the southern edge of the campus heart was not at all centrally located, and the students and faculty are elated that the change has been made," Rev. Johnson said.

The new location will have the chapel rising amidst a grove of trees directly across the street from the president's campus residence.

"The first site was in that large open area with no trees, and was not at all accessible to those people who wanted to attend the chapel," Rev. Johnson added.

Target date for actual construction to begin is May of 1983 with completion set for the fall of the following year.



CHURCH LEADERS VISIT — Thirty-three executive members of the Ministers Conference met on campus recently and were entertained at lunch by Acting President Nelson. Pictured are some leaders of the group (from left): Reverends Robert Rowe, Dallas; E. Stanley Branch, Houston and B. L. McCormick, Ft. Worth.

Rev. Johnson explained that first phase of what will ultimately be the All Faiths Chapel Complex will be only the chapel itself.

"Following that we hope to add a day care center, a center for the elderly, and one for the young adults," Rev. Johnson explained. "Of course, all

monies for not only these additions but the chapel itself comes from the private sector. Although the prime structure cost is almost behind us, we still have a way to go for the entire complex."

Meanwhile, the ministers elected Rev. A. J. Bundage, from the Payne AME Church

in Houston, to be chairman for the upcoming three-day conference, expected to draw more than 500 ministers from across the state for the non-denominational conclave. Architectural contracts for the chapel have been let to Hayward-Jorden Architects of Houston.

Karol Kay Alton, Prairie View Woman — 1982-83, began her summer with



Karol Kay Alton

exciting activities. On the 27th of May she and Dr. Sarah Williams, Department Head of Social Work and Sociology flew to Washington, D. C. for the Young Womens Christian Association (YWCA) Convention. They attended seminars on lesbian rights, family management, teenage pregnancies, and stress.

Upon returning to Houston Karol began an internship with the Harris County Juvenile Probation Office. She worked in the 313th District Court Section. Karol was responsible for interviewing clients and making decisions concerning custody of juveniles. Karol says she enjoyed the internship and is seriously thinking about continuing in the field of Criminal Justice.

MAURICE BUCHANAN TURNED DOWN A BASKETBALL SCHOLARSHIP FOR AN ARMY ROTC SCHOLARSHIP.

"I knew I needed to go to college. I needed to get that ticket punched to be successful," says Maurice. "Why did I select an Army ROTC scholarship over a basketball scholarship? Because I knew I'd have a job after graduation. And that's more than a lot of my peers could say."

"An Army officer's job is both challenging and rewarding. It's also unique in the amount of responsibility you're given coming right out of college."

"I may stay in the military. But if I decide to get out, I've got the best job reference in the world—a commission in the United States Army. And I owe it all to Army ROTC."

Army ROTC can do the same for you.

Qualify, and you can win an ROTC scholarship, as Maurice did. Each scholarship covers tuition, books, and more.

But even if you don't win one, as an ROTC cadet, you'll still receive financial assistance. Up



Capt. Maurice Buchanan was a math major at the University of Georgia and a member of Army ROTC.

to \$1,000 a year for your last two years of ROTC.

You'll also receive ROTC leadership and management training. Training that turns you into a leader, a decision-maker, a doer. Training that also enables you to graduate with both a degree in your chosen major and an Army officer's commission.

If you'd like a job waiting for you after college, do what Maurice Buchanan did.

Apply for an Army ROTC scholarship. Today. And begin your future as an officer.

CONTACT:

Capt. Garrett
Room 204
Old Science Building
Telephone: 857-4512

ARMY ROTC. BE ALL YOU CAN BE.

Marshall Chevrolet-Olds in Hempstead

"We Clobber Big City Prices"



HEMPSTEAD
826-2411

LAWRENCE MARSHALL CHEVROLET-OLDS., INC.

P. O. Box 983 — Hempstead

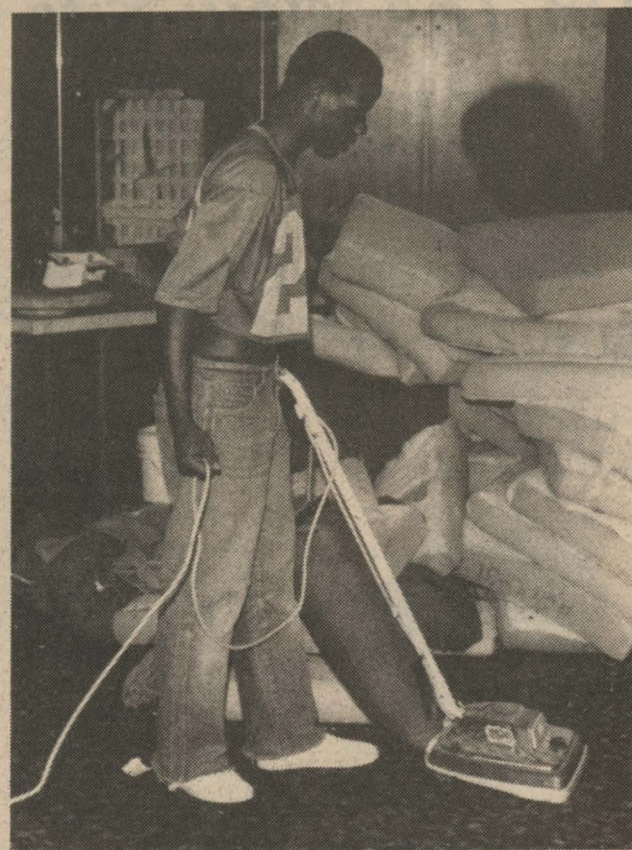


HOUSTON
463-8484

Clean-Up Job In Memorial Center

William Johnson, a junior Communications major from Chicago, was one of more than 30 students who answered the call for cleanup help at the Memorial Student Center at Prairie View A&M University. "A lot of us figured it was about time for a really good cleanup job so we all pitched in and made a nicer place out of the center where we spend a lot of time," said Johnson.

Frank Jackson, assistant director of university centers, said rarely used portions of the building are being put back into operation including a short order store, barber shop, game room along with the beauty shop, post office, and senior citizens center which are now in operation. "I was proud of the student turnout, and they did such a fine job, we just might have another cleanup campaign soon!" said Jackson.



STUDENT TASK FORCE — Senate members who are setting plans for student election include (L-R) John Ross, Helen Collier, Trisha Burse, Sharon Cosby and Ruth Adams. Not pictured is Tonya Garcia.

Attention:

Post Office Box Holders

Effective October 1, 1982 all mail must bear postoffice box number or general delivery.

Mail without correct address will be returned to sender indicating insufficient address.

All persons who do not reside on Prairie View campus or in the community where mail service is available must pay rent for boxes as following:

Semi-annual Fees:	Previous	Present
Number 1	\$2.50	\$10.00
Number 2	\$3.50	\$13.00
Number 3	\$5.50	\$22.50
Number 4	\$8.50	\$34.50

Best Sellers

FICTION

1. *Different Seasons*, by Stephen King.
2. *The Prodigal Daughter*, by Jeffrey Archer.
3. *The Parsifal Mosaic*, by Robert Ludlum.
4. *The Case of Lucy Bending*, by Lawrence Sanders.
5. *Cinnamon Skin*, by John D. MacDonald.
6. *The Man From St. Petersburg*, by Ken Follett.
7. *Eden Burning*, by Belva Plain.
8. *North and South*, by John Jakes.
9. *The One Tree*, by Stephen R. Donaldson.
10. *Touch The Devil*, by Jack Higgins.

NON FICTION

1. *Life Extension*, by Durk Pearson and Sandy Shaw.
2. *Jane Fonda's Workout Book*, by Jane Fonda.
3. *When Bad Things Happen To Good People*, by Harold S. Kushner.
4. *Living, Loving & Learning*, by Leo Buscaglia.
5. *Princess*, by Robert Lacey.
6. *Edie*, by Jean Stein.
7. *Richard Simmons' Never-Say-Diet Cookbook*, by Richard Simmons.
8. *No Bad Dogs: The Woodhouse Way*, by Barbara Woodhouse.
9. *A Light In The Attic*, by Shel Silverstein.
10. *A Few Minutes With Andy Rooney*, by Andrew A. Rooney

"Best Sellers," *New York Times Book Review*, (August 29, 1982, p. 16).
Dr. Ivory V. Nelson, Acting President, Prairie View A&M University
Dr. Clarissa Booker, Chairman, The Century II Book Review Committee

THE PRAIRIE VIEW PANTHER

Published Twice Monthly in the interest of a Greater Prairie View A. and M. University. The PANTHER serves as the voice of Pantherland.

Prairie View A&M University is open to all, regardless of race, color, religion, or national origin.

UNIVERSITY INFORMATION & PUBLICATIONS STAFF
 News Henry Hawkins, Jack Weeks, Curtis Wood
 PHOTOGRAPHY Tom Godwin, Paris Kincaide, Roy Pace
 BUSINESS OFFICE Vanessa Jackson, Gloria Perez

Any news items, advertising, or matters of interest to THE PANTHER may be presented to the Department of Student Publications, Communications Bldg., 2nd Floor, Hilliard Hall, Telephone 857-2117. C. A. Wood, Publications Director.

CASS Student Advertising, Incorporated
 1633 West Central, Evanston, Illinois 60201

Truth has only to exchange hands a few times to become fiction.
 —Discovery Digest



Wilt Chamberlain, who once scored 100 points in a game, never fouled out of a game.

What Is Academic Progress At Prairie View A&M

A student at Prairie View A&M University is expected to make acceptable Academic Progress toward a degree objective. The student who fails to make such progress and accumulates excessive grade point deficiencies shall be placed on Academic Probation by the Registrar's Office, effective January 1, 1983.

I. ACADEMIC PROBATION

According to the 1982-83 Prairie View A&M University's Catalog pp. 44-45:

"An undergraduate student is said to be making satisfactory progress when his semester progress and cumulative record are at a rate equivalent to, or better than the 2.0 grade point average required for graduation. The cumulative grade point average is based on the credit hours attempted at Prairie View A&M University."

An undergraduate student becomes academically deficient when:

1. His cumulative grade point average is below 2.0
2. His semester grade point average is below 2.0
3. He is below 2.0 for courses in his major.

The student placed on Academic Probation will be officially notified by the Registrar's Office that he is on Academic Probation. At the time the student will be instructed to report to the Dean of the respective College or an Academic Standards Committee established for the College.

The Dean of the Academic Standards Committee for the College will do either of the following according to the University Catalog:

1. Warn the student of his scholastic deficiency and recommend or not recommend the continuance of the student on scholastic probation.
2. Recommend that student be dropped from the University rolls for deficient scholarship.
3. Inform the student that if he stays at the University on Academic Probation he will be expected to attain the 2.0 cumulative grade point average during the semester of probation.

II. TERMS OF PROBATION

A student on probation because of unsatisfactory academic standing must follow a restricted program as follows:

1. The course load must not exceed 16 semester hours and may be less if so determined by the College Dean.
2. The student must attend all classes. Absences must be approved by the Office of Student Affairs.
3. The student cannot represent the University in any extracurricular activity or may not take part as an officer in any meeting or conference except for an activity begun the preceding semester.
4. A student on probation cannot participate in trips, tours, or productions sponsored by the University except as part of class project.
5. The student cannot compete in intercollegiate athletics.

Policy Statement Presented by Dr. Ivory V. Nelson, Acting President

III. REMOVAL OF ACADEMIC PROBATION

A student may be removed from academic probation by earning the grade point average of "C." A student who was on academic probation, has been removed from academic probation, and is once again placed on academic probation, shall be considered in his first semester of probation.

IV. ACADEMIC SUSPENSION

At the end of each regular semester, any student who is in his first semester of academic probation and fails to make a grade point ratio of 1.7 (overall attempts) will be notified that academic suspension is pending. At that time the student will be instructed to report immediately to the Dean of his College. The appropriate Dean will then assist the student in initiating petition to remove from grade point calculations repeated course grades and courses not on the degree plan. If the adjustments reduce the grade deficiency to less than 25 grade points, the student's status will be good standing. If not, his status will be either academic probation or academic suspension for the following enrollment period.

At the end of each regular semester, any student who is in his second or succeeding semesters of academic probation and fails to make a grade point ratio of 2.0 (overall attempts) a "C" average, will be notified that academic suspension is pending. At that time the student will be instructed to report immediately to the Dean of his College. The appropriate Dean will then assist the student in initiating a petition to remove from grade point calculations repeated course grades and courses not on the degree plan. If the adjustment reduce the grade point deficiency to less than 25 grade points, the student's status will be in good standing. If not, his status will be either academic probation or academic suspension for the following enrollment period.

V. TERMS OF SUSPENSION

A student who is dismissed because of unsatisfactory academic standing may enroll in the next summer session, otherwise such dismissal is for at least one regular semester for the first suspension; and one calendar year for the second suspension; return in a fall semester requires approval of the Dean.

Students returning from academic suspension will be admitted on academic probation and will remain under a 2.0 grade point requirement to continue enrollment.

VI. OTHER

1. Each student is responsible for knowing his academic status and the regulations which apply. A student who does not abide by the regulations governing his particular status may be required to reduce his academic load or withdraw from the University without special consideration.
2. A student who is academically dismissed may not qualify for reinstatement through attendance at another college or university. Students admitted to another institution while under action or suspension at Prairie View A&M University will be required to earn a grade point average

See ACADEMIC PROGRESS, Page 5

Austin Prairie View Alumni Club Awards Scholarships to Four

"We are very pleased to have them at Prairie View A&M University because of the knowledge they'll bring to the campus," said Hoover Carden, Administrator of the Co-operative Extension Program regarding four promising students entering Prairie View this fall from Austin who were awarded scholarships. The students were recruited by Thaddeus A. McDonald, County Extension Agent in

Austin, and Emerson Sanders, Neighborhood Improvement Specialist.

The local Prairie View Alumni Club in Austin provided the scholarships and based their selections on academic rank, need, and recommendations. The Austin freshman are: Sheree Collins, daughter of Mrs. Pearl Collins, graduate of Sidney Lanier High School; Angela Hargrove, daughter of Mr. and

Academic Progress —

CONTINUED from Page 4

equal to what would be required if they were enrolled in Prairie View A&M University in a probation status to be eligible for readmission. Advanced standing credit is granted for course completed at another institution during a student's period of suspension from Prairie View A&M University only upon acquisition of a 2.0 accumulative grade point average at Prairie View A&M University.

4. Transfer applicants must prove eligibility to reenter their previous institution.

WE CARE DAY CARE AND CHILD DEVELOPMENT CENTER

Highway 290 at Prairie View

857-5650

OPEN: 6:30 a.m. to 6:00 p.m.

AGES: 6 Months to 12 Years

- * Licensed Facility
- * Morning & Afternoon Snacks
- * Hot Lunch
- * Supervised Activities
- * Structured Curricular
- * Supervised Study Hall for After School Age
- * 10% Discount 2 or more per family
- * Drop-Ins Welcome



Chicken 'N Rolls

COUNTRY FRIED CHICKEN, HAMBURGERS, COUNTRY FRIED STEAK



Open 10 a.m. - 10 p.m.

FAMILY DINING ROOM

DRIVE THRU WINDOW

CATERING Tel. 826-6578

Hwy. 290 Hempstead

PCS ACCEPTED
Students Receive 10% DISCOUNT
on All Prescriptions with ID
Waller Pharmacy

372-2131

1219 Farr Street Waller, Texas 77484

Meet The Chaplains

REV. CUBE CHARLESTON
 Pastor, Second Baptist Church and St. Paul Baptist Church, Assist with Baptist Student Movement



REV. W. D. RICHARDSON
 Pastor, Blue Ridge Baptist Church, Houston, Texas Head Chaplain for Baptist Student Movement. Prayer Meeting Every Tuesday, 7:00 p.m.



FATHER JAMES SPROAT
 Vicar of St. Francis and Canterbury Association



REV. RICHARD D. HAYES
 Baptist Church, Mt. Enterprise Primitive Baptist Church and St. Paul Primitive Baptist Church



BROTHER ROBERT HARPER
 Church of Christ



REV. W. VAN JOHNSON
 Dean of Chapel



ELDER W. L. HENNESEY
 Pastor, Prairie View Chapel Church of God in Christ and COGIC Club



FATHER JEROME LEDOUX
 St. Martin DePorres Church and Newman Club



REV. THERMAN TAYLOR
 Pastor, United Methodist Church, Prairie View, Methodist Campus Ministries and Wesley Foundation



REV. E. JOHNSON
 Sponsor Baptist Student Movement



Support The Panthers

Mrs. Nelson Hargrove, L. C. Anderson High School, majoring in electrical engineering and computer science; Mae Bell Mitchell, daughter of Mrs. Irene Casey, Sidney Lanier High School, majoring in nursing; and James L. Wright, Jr., son of Mr. and Mrs. James L. Wright, Sr., majoring in business law.

Each student received \$225.00 to contribute to their educational expenses at Prairie View.

Capers, Who Are We?

We, the sister organization CO-ED AFFILIATES OF PERSHING RIFLES, also welcome freshmen and returning students to this school year ('82-83). We would like to introduce our sorority to you. We are also a military sorority, our purpose is to assist young ladies in preparing for the future in the areas of military leadership, discipline, drill without arms, and yet we remain ladies in the truest sense of the word. These skills may be used in both military and civilian life styles.

Our organization is open to all young ladies enrolled in either Army ROTC or Navy ROTC.

CAPERS: Melba Davis, Carrie Dukes, Marcia Gordon, Diana Guillory, Jauline James, Charlotte Leviston, Regina Moore, Leada Morris, Shelia Nowling, Wanda Nowling, Genevieve Tillmon, Jacqueline Williams, and Yolanda Whitfield.

THE CHALLENGE IS HERE!

PRAIRIE VIEW A&M UNIVERSITY
EMPLOYEES FEDERAL
credit union

P. O. BOX 2606
 PRAIRIE VIEW, TEXAS 77445

A Service to The Prairie View Community for Over Forty Five Years

NOW OFFERING
REGULAR SHARE ACCOUNTS (\$25.00 Minimum)
ALL SAVERS CERTIFICATE (\$500.00 Minimum)
30 MONTHS SHARE CERTIFICATE (\$1,000 Minimum)
6 MONTHS MONEY MARKET CERTIFICATE (\$10,000 Min.)
NEW INDIVIDUAL RETIREMENT ACCOUNT (IRA) (\$1,000 Minimum)

OUR MOTTO: "Not for Profit
 Not for Charity
 But for Service"

OFFICE HOURS: Monday thru Friday 9:00 - 6:00 p.m.
 Saturdays 9:00 - 12:00 Noon

PHONE: (713/ 857-4925)

OFFICE LOCATION: P. V. Alumni House

Text of Dr. Hansen's Address at PV's Summer Commencement Exercises

Dr. Nelson, special guests, faculty of Prairie View, friends and family of our students, and members of our graduating class. It is indeed a pleasure and a privilege to be invited to speak to this graduating class. In fact, this is the first opportunity I have had to address any System function since coming to Texas, and I am pleased that it is at Prairie View.

The preparation of remarks for a graduating class is always a challenge. First, the graduates did not come to graduation to hear a speaker! They came to get their hard-earned diplomas and the quicker the better! Second, it is difficult to say anything that is not ridden with cliches and that has a half-life of much more than one minute. With that in mind, I am tempted to recite a poem that goes like this:

Good luck to you
You're on your way
There's little more that
I can say!

Go find a job
And then, please choose
To pay each year
Alumni dues.

When you are rich
And blessed with fame
We'll build a building
In your name.

We will, of course,
Do this with glee
If you come back
To pay the fee

But rich or poor
And this is true
We're glad you came
To Prairie View!

Now that's simple enough — but hardly commensurate with what is expected of a commencement speaker! In keeping, therefore, with the dignity of this occasion, please allow me to be serious for just a moment and comment on what I believe life might hold

for you when you walk away from here today with your diploma.

A "commencement" can be interpreted to mean that you are about to commence a new phase of your life. The days of classroom study are behind you. What is now in store for you? For some, it will be a new job or a career. For some, it will mean continuing your education. For others, it will be a time for simply exploring options and determining what you would like to pursue in the years ahead. Whatever your choices may be, I hope that you will experience "success!" By "success," I mean two things: first, becoming the kind of person you want to become; and second, to reach the goals you have set for yourself. The measure of such "success" can only be determined by you. Whether the outside world regards you as "successful" is not really important. What you think about yourself is most important.

Now let me speak briefly to the attainment of one goal that I hope all of you will desire — having a full and rewarding life. For this I would share with you a simple formula that I have seen applied in the lives of many people who seem to thoroughly enjoy life and its challenges. The formula has three parts, as follows:

1. Continue to grow and learn
2. Have a sense of conviction and determination
3. Have the courage to dare

The steps are as simple to state as they are demanding to follow. Let's take the first one — continue to grow and learn.

The main purpose of your college education has been to furnish you with a base to begin the true process of education — teaching yourself and moving ahead into new realms of knowledge and understanding. Your educa-

tion will be largely wasted if your horizons are not expanded beyond those which you found in the classroom. And why is this important? First, your options to move into new areas of life will be expanded. Second, living will become much more interesting as you acquire new skills and new ideas. Boredom with life is a highly contagious disease. Don't let others who have fallen into mental ruts infect you with their malady. As each year passes, look back and say, "I have grown in some specific way."

Next, let's look at the second part of the formula — having a sense of convictions and determination. This leads me to the observation that there are winners and losers in the game of life. Furthermore, being a winner or a loser is largely the result of a mental attitude or mind set. There are those who have strong convictions about what they want to accomplish and have the will and determination to reach a goal — they are life's winners. Others go through motions and make excuses, but never get in the race. They are losers. Let me give you an example of a winner whose courage and determination have always inspired me.

Some years ago, I had an opportunity to teach for six months at a college with a very proud history — Tuskegee Institute. During my stay, I came to know how Tuskegee was the creation of one man — Booker T. Washington. He had the conviction and the determination to build such an institute and the odds against him doing it were astronomical — but he did it! He, along with the students, built the buildings with bricks they fired in their own kiln. A lesser man would never have made it. Discouragements came daily. Let me cite one example:

"We tried several locations before we opened up a pit that furnished brick clay. I had always supposed that brick-making was very simple, but I soon found out by bitter experience that it required special skill and knowledge, particularly in the burning of the bricks. After a good deal of effort we moulded about twenty-five thousand bricks and put them into a kiln to be burned. This kiln turned out to be a failure, because it was not properly constructed or properly burned. We began at once, however, on a second kiln. This, for some reason, also proved a failure. The failure of this kiln made it still more difficult to get the students to take any part in the work. Several of the teachers, however, who had been trained in the industries at Hampton, volunteered their services, and in some way we succeeded in getting a third kiln ready for burning. The burning of a kiln required about a week. Toward the latter part of the week, when it seemed as if we were going to have a good many thousand bricks in a few hours, in the middle of the night the kiln fell. For the third time we had failed.

"The failure of this last kiln left me without a single dollar with which to make another



Chancellor Hansen is pictured during address to August graduates.

experiment. Most of the teachers advised the abandoning of the effort to make bricks. In the midst of my troubles I thought of a watch which had come into my possession years before. I took this watch to the city of Montgomery, which was not far distant, and placed it in a pawn-shop. I secured cash upon it to the amount of fifteen dollars, with which to renew the brick-making experiment. I returned to Tuskegee, and, with the help of the fifteen dollars, rallied our rather demoralized and discouraged forces and began a fourth attempt to make bricks. This time, I am glad to say, we were successful. Before I got hold of any money, the time-limit on my watch had expired, and I have never seen it since; but I have never regretted the loss of it."

Finally, let's look at the last factor in the success formula — courage to dare. Be willing in life to take some chances — to try what seems to be totally new to you. Even if that which you have tried doesn't work out, you will have learned from it. Once, again, I would take an example to illustrate the point. In the year 1954, a young preacher—Martin Luther King and his bride — took up a pastorate in Montgomery, Alabama. What might have been a routine style of life for the Kings suddenly changed because of a single event on December 1, 1955. Rosa Parks refused to sit in the back of a segregated bus. She was arrested. In response, the Black community refused to ride the buses. And the Montgomery boycott began. But to be successful, a leader was needed. Then, at a meeting on Monday evening, December 5, fate singled out Martin Luther King to be chosen president of the newly-formed Montgomery Improvement Association. As King tells the story:

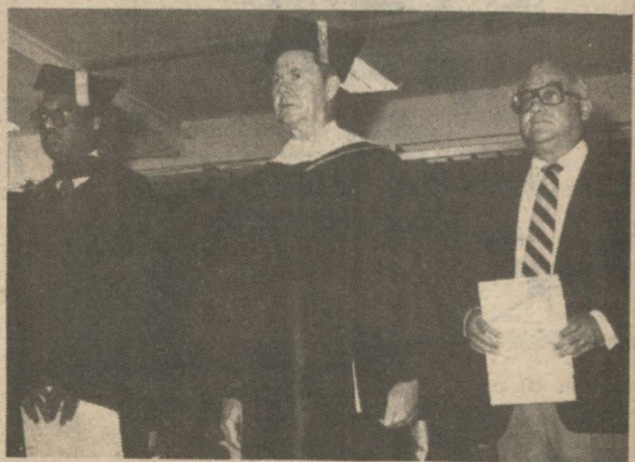
"As soon as Bennett had opened the nominations for president, Rufus Lewis spoke from the far corner of the room: 'Mr. Chairman, I would like to nominate Reverend M. L. King for president! The motion was seconded and carried, and in a matter of minutes I was unanimously elected.

"The action had caught me unaware. It had happened so quickly that I did not even have time to think it through. It is probable that if I had, I would have declined the nomi-

nation. Just three weeks before, several members of the local chapter of the NAACP had urged me to run for the presidency of that organization, assuring me that I was certain of election. After my wife and I had discussed the matter, we agreed that I should not then take on any heavy community responsibilities, since I had so recently finished my thesis, and needed to give more attention to my church work. But on this occasion events had moved too fast.

"The day of days, Monday, December 5, 1955, was drawing to a close. We all prepared to go to our homes, not yet fully aware of what had happened. The deliberations of that brisk, cool night in December will not be forgotten. That night we were starting a movement that would gain national recognition; whose echoes would ring in the ears of people of every nation; a movement that would astound the oppressor, and bring new hope to the oppressed. That night was Montgomery's moment in history!"

On that night, Dr. King took a chance. Like Washington, he bet his life on something he



AUGUST COMMENCEMENT — Key participants were Acting President I. V. Nelson; Chancellor Arthur G. Hansen and Congressman E. De La Garza, D-Texas.

WARD'S PHARMACY

"Your Rexall Store"

SENIOR CITIZEN DISCOUNT
AVAILABLE ON PRESCRIPTIONS

Telephone 826-2445 Nights 826-6920
Hempstead, Texas

Chancellor Hansen Addresses August Graduates

Prairie View A&M University's summer graduates were urged Sunday to continue to grow and learn, nurture a sense of conviction and determination and have the courage to dare.

Some 335 graduates, including 210 receiving advanced degrees heard that success formula offered by Dr. Arthur G. Hansen, Texas A&M University System's new chancellor.

Prairie View's commencement was Dr. Hansen's first major public appearance since taking charge of his new position July 1.

"The main purpose of your college education has been to furnish you a base to begin the true process of education — teaching yourself and moving ahead into new realms of knowledge and understanding," Dr. Hansen said in encouraging Prairie View A&M's newest graduates to continue to grow and learn. "Your education will be largely wasted if your horizons are not expanded beyond those which you found in the classroom."

In emphasizing the importance of a sense of convictions and determination, he observed that life is made of winners and losers, with the difference between largely the result of mental attitude.

Booker T. Washington was cited as a winner, with special reference made to his leadership in building Tuskegee Institute, where Dr. Hansen once taught for six months.

"He (Washington) had the conviction and determination to build such an institute, and the odds against him doing it were astronomical, but he did it! He, along with the students, built the buildings with bricks they fired in their own kilns!" the TAMUS chancellor pointed out. "A lesser man would never have made it!"

The last factor in the success formula proposed by Dr. Hansen called for "having the courage to dare!"

"Be willing in life to take

some chances — to try what seems to be totally new to you," he urged. "Even if that which you have tried doesn't work out, you will have learned from it.

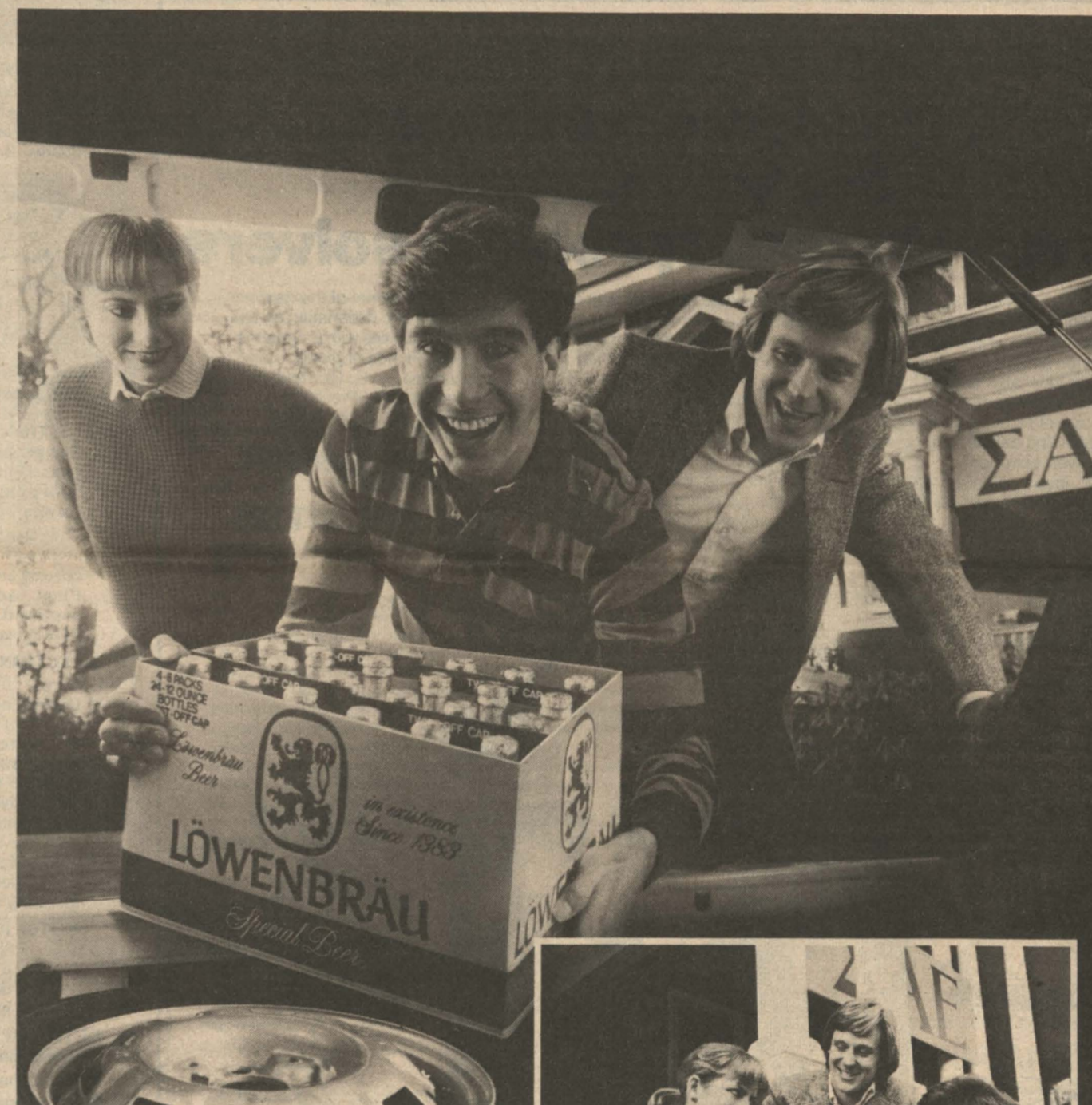
Dr. Hansen compared Dr. Martin Luther King, famed civil rights leader from Alabama, who "had the courage to dare and bet his life on something he believed in

and never lost courage!" "In that Spirit, may you leave here today with the will to continue to learn, to face life's challenge with unbreakable convictions and determi-

nation, and be willing to take risks in life that may make all the difference for yourself and your fellowman," Dr. Hansen advised the new graduates.

He continued his vow to make "upgrading of Prairie View A&M University our highest priority, and make the university first rate in every way including curriculum and physical plant!"

When a good friend borrows your car, the tank may not come back full. But the trunk does.



When you get paid back with interest like this, it sort of makes you wish he'd borrow things more often.

Open up a few cold ones and toast a guy who really knows how to return a favor. Tonight, let it be Löwenbräu.

Löwenbräu. Here's to good friends.



SENIOR RECITAL — La-Vaughn Mosley III is pictured during his Senior Trumpet recital on July 22 in H-T Recital Hall.

Support Services Employee of The Month

First Award Made In August

EMPLOYEE OF THE MONTH

Program Initiated By Acting President I. V. Nelson

A. PURPOSE:

- To stimulate and motivate pride and sense of achievement among support services personnel for their services and contributions to Prairie View A&M University.
- To focus on the responsibility and stewardship of support services personnel, in maintaining and serving Prairie View A&M University in a first class fashion.
- To recognize and reward outstanding contributions above the regular work responsibilities.
- To present a \$50.00 savings bond and certificate to the employee voted as, "Support Services Worker of the Month."

B. ELIGIBILITY

- All employees with six (6) months or more of continuous service at Prairie View A&M University in the following areas are eligible:
 - Custodial Service
 - Grounds Maintenance
 - Building Maintenance
 - Power Plant
 - Security
 - Fire Department
 - Laundry
 - Air Conditioning Maintenance

- To present certificate to the employee voted as, "Runner Up Support Services Worker of the Month."
- To actively involve all employees of areas eligible for the award, in some way, at some time, as a motivating experience.



EMPLOYEE AWARD — Two Support Service Employees of the six winners are shown receiving awards from Dr. I. V. Nelson. They are Ms. Bertha Washington (left) and Ms. Gertrude Kirby. Other winners in June and July were Aaron Wahington, Carl Williams, Ronnie Matthews and Lloyd Washington.

- Hospital (Custodians)
- College Exchange (Custodians)
- Women's Dormitories (Custodians)
- Men's Dormitories (Custodians)

C. EXCLUSION

- All Administrative Heads, Assistants, Managers, Secretaries, and Clerical Persons are excluded from competition.

D. SELECTION COMMITTEE

- One person per defined area shall be nominated by the

D. SELECTION COMMITTEE

- One person per defined area shall be nominated by the peers of the areas, plus other persons may be nominated by any other employee of the University except those employees from the defined areas.
- The Selection Committee will consist of one representative from each of the support areas. These members will be selected and rotated monthly by their peers. Two Physical Plant Administrative/Supervisory Staff members appointed by the President shall serve as Ex-Officio (These have no vote).

E. SELECTION/NOMINATION PROCESS

- Names of Nominees shall be brought to the Selection Committee, when they are convened, by a representative of each of the defined areas plus others that are eligible to nominate. Each representative shall be allowed a maximum of 6 minutes to make nomination to the Selection Committee. The nominations will be oral with substantiating materials, to be provided at the option of the person making the nomination. Selection Committee will vote after hearing separately all nominations. The names of the first, second, and third runner up will be sent to the Vice President for Physical Plant Planning and Engineering to forward same to the President.

NOTE: It is the responsibility of the Administrators responsible for each eligible support area to see that a nomination for support services employee of the month is made monthly, and preferably not by the Administrator responsible for the area.

F. DUTIES OF SELECTION COMMITTEE MONTHLY

- The committee will elect a chairman.
- The committee will elect a secretary.
- The committee will receive nominations from support areas or others.
- The committee will deliberate in the absence of all except committee members, and vote and elect in accord with guidelines.
 - Support services worker of the month, as the nominee receiving the largest number of votes as the support worker of the month.
 - Runner up as support services worker for the month, the nominee receiving the 2nd largest number of votes as the support worker of the month.
 - Alternate runner up as support services worker of the month, the nominee receiving the 3rd largest number of votes as the support worker of the month.
- Inform the Vice President for Physical Plant Planning and Engineering in writing of selections within one day after selections are made.

G. DUTIES OF NON VOTING COMMITTEE MEMBERS APPOINTED BY THE PRESIDENT

- To see that the committee convenes on schedule.
- Supervise the election of a chair person.
- Act as technical advisor to the committee in interpreting the program criteria.

See SUPPORT SERVICES, Page 7

E-Systems continues the tradition of the world's great problem solvers.

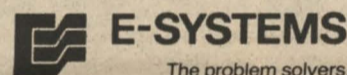
Unquestionably, Leonardo da Vinci possessed one of the world's great minds. Not only renowned as a painter and sculptor, da Vinci also applied his exceptional talents to the mechanics of flight, to cartography for planning military campaigns, and even astronomy.

Today, scientists and engineers at E-Systems continue the tradition by expanding the practical application of advanced technology. E-Systems uses the principles of flight mechanics as the basis for major modifications to aircraft, expands basic cartography to encompass highly

sophisticated guidance and command and control systems, and has designed and built a system that greatly expands man's ability to study the universe.

That's only a small segment of the tough problems E-Systems engineers solve in the area of antennas, communications, data acquisition, processing, storage and retrieval systems and other systems applications for intelligence and reconnaissance — systems which are often the first of a kind in the world.

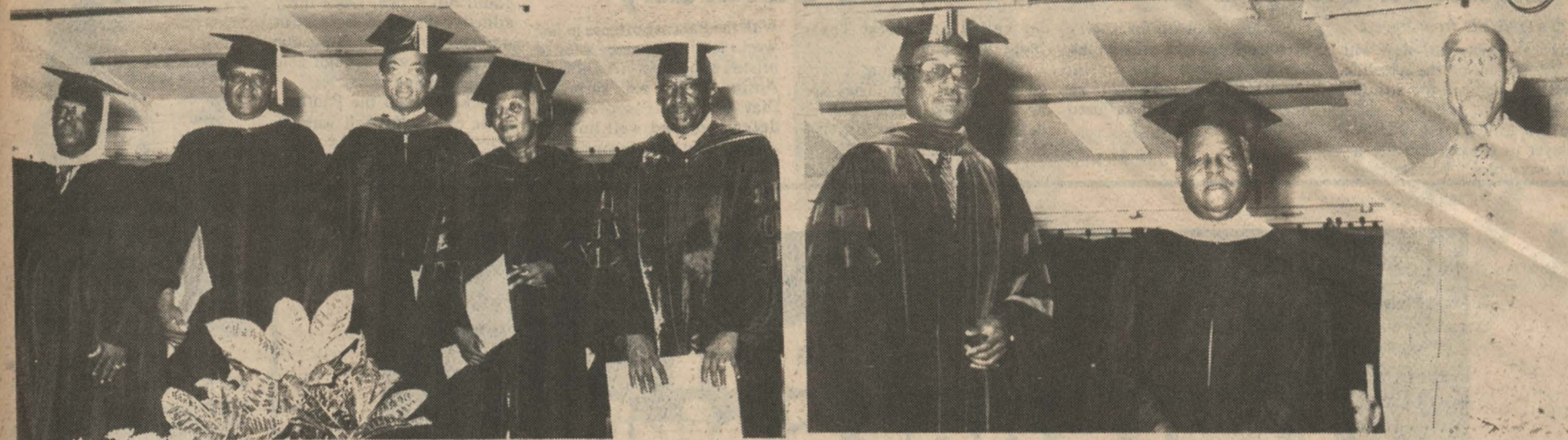
For a reprint of the da Vinci illustration and information on career opportunities with E-Systems in Texas, Florida, Indiana, Utah, and Virginia, write: Dr. Lloyd K. Lauderdale, Vice President Research and Engineering, E-Systems, Inc., Corporate Headquarters, P. O. Box 226030, Dallas, Texas 75266.



An equal opportunity employer M.F.H.V.



Our Garland Division Will Be on Campus Interviewing September 24



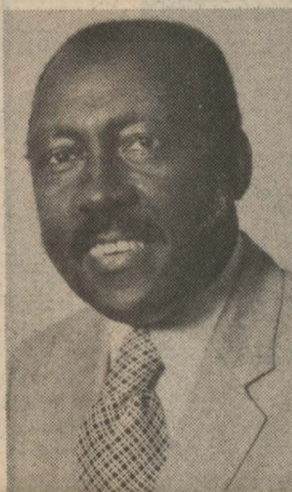
RETIRING STAFF MEMBERS — Pictured with Acting President Nelson are Retirees: C. A. Thomas, Registrar, and A. E. LeBeaux, Superintendent Plant Maintenance. Others not pictured are Robert A. Henry, Head, Music Department; Alandrus A. Peterson, Manager, University Laundry; Adell Thornton and Howard Toney, Custodians.

SYSTEM PROFESSORS — Presented during recent commencement exercises were PV staff members who participated in the faculty exchange program with Texas A&M in 1981-82. They are (L-R): Leon English, Dr. Charles T. Edwards, Dr. Alfred Parks, Dr. Helen Miller, and Dr. Purvis Carter. Not pictured: Andrew Malveaux.

Rev. Van Johnson To Speak in Bryan

The Rev. W. Van Johnson, dean of chapel at Prairie View A&M, will be guest speaker at the Fourth Annual Youth Activities in Bryan September 19 at 4:30 p.m. at the Carver Elementary School.

The week-long conclave will include a seminar, musical,



Rev. W. Van Johnson

CEBA Awards Ceremonies in New York October 14

Nancy Wilson and Paul Winfield will be the masters of the ceremonies at the Fifth Annual CEBA Awards dinner to be held on Thursday, October 14th at 6:00 p.m. at the New York Hilton Hotel. Ms. Wilson, one of the nation's most popular song stylists, will also be the evening's featured performer.

The Communications Excellence to Black Audiences (CEBA) Awards are presented annually by the World Institute of Black Communications (WIBC) to salute those corporations, ad agencies and individuals who have demonstrated sensitivity and expertise in advertising directed towards Black consumers.

More than 1,500 executives are expected to attend this year's CEBA Awards ceremony, and 111 awards will be presented in 37 categories covering television, radio, print and merchandising materials.

The 1982 competition has been the most successful in the five-year history of the program, according to Terrie M. Williams, WIBC Executive Director. More than 1,700 entries have been submitted from corporations across the country.

revival, parade and youth day services.

Host churches include Mt. Enterprise and St. Paul Primitive Baptist Churches. The Baptist Student Movement Choir, several faculty and staff members, the marching band and ROTC Drill Unit from Prairie View A&M, and the Waller County Senior Citizens Group will also participate.

"This will be our third year," says Rev. Johnson, "and the university is honored to be able to participate in inspiring the youth of Bryan."

Carver Elementary School is located at 1401 West 19th in Bryan.

BLUE RIDGE SEA?

The Blue Ridge Mountains of Virginia's Shenandoah National Park were at the bottom of the sea some 450 million years ago. Today they are 2,000 feet above sea level. About 300 square miles of them sit within the park.



American Collegiate Poets Anthology International Publications is sponsoring a National College Poetry Contest

— Fall Concourse 1982 — open to all college and university students desiring to have their poetry anthologized. CASH PRIZES will go to the top five poems:

\$100	\$50	\$25	\$15	Fourth
First Place	Second Place	Third Place	\$10	Fifth

AWARDS of free printing for ALL accepted manuscripts in our popular, handsomely bound and copyrighted anthology, AMERICAN COLLEGIATE POETS.

Deadline: October 31

CONTEST RULES AND RESTRICTIONS:

- Any student is eligible to submit his or her verse.
- All entries must be original and unpublished.
- All entries must be typed, double-spaced, on one side of the page only. Each poem must be on a separate sheet and must bear, in the upper left-hand corner, the NAME and ADDRESS of the student as well as the COLLEGE attended. Put name and address on envelope also!
- There are no restrictions on form or theme. Length of poems up to fourteen lines. Each poem must have a separate title. (Avoid "Untitled"!)
- Small black and white illustrations welcome.
- The judges' decision will be final. No info by phone!
- Entrants should keep a copy of all entries as they cannot be returned. Prize winners and all authors awarded free publication will be notified immediately after deadline. I.P. will retain first publication rights for accepted poems. Foreign language poems welcome.
- There is an initial one dollar registration fee for the first entry and a fee of fifty cents for each additional poem. It is requested to submit no more than ten poems per entrant.
- All entries must be postmarked not later than the above deadline and fees be paid, cash, check or money order, to:

INTERNATIONAL PUBLICATIONS
P. O. Box 44-L
Los Angeles, CA 90044

Support Services Employee

CONTINUED from Page 8

- To arrange for presentation of awards, and for publicity involved.
- H. CRITERIA FOR SELECTION AS SUPPORT WORKER OF THE MONTH AND AS RUNNER UP SUPPORT SERVICES WORKER OF THE MONTH**
 - Job Knowledge
 - Quality of Work
 - Quantity of Work
 - Responsibility
 - Initiative
 - Cooperation
 - Dependability
 - Attendance

A person can be selected more than once.
- I. SCHEDULE**
 - The committee will meet monthly and deliberate on nominations for work performance during the previous month.
 - The occasion of the award will be reported in the Panther and Bulletin Board Display, with photograph, and brief biographical sketch of the person selected as the "Support Service Employee of the month."
- J. AWARDS**
 - The employee of the month will receive a \$50 saving bond and certificate.
 - The runner up will receive a certificate.

Kollar Korner

Rev. D. L. Walker, left Prairie View and went to Marshall, Texas. We would like to say to Rev. Walker, God speed and Good Luck in your new assignment.

To: Rev. Taylor, who replaced Rev. Walker, welcome aboard and may God be with you in your new assignment. Thank God for You. Our lives will be a little richer because you came this way.



NEW SECURITY OFFICERS — Chief Lillie Burditt is shown swearing in two new officers Charles Gamble (left) and Rusaw Knowles.

Houston Art League Fall Festival

The Art League of Houston Fall Festival Art Exhibition will open Thursday, September 9, 1982 from 8:00 - 9:00 p.m. The exhibit will feature works of local area artists including Mr. Clarence Talley, Associate Professor of Art at Prairie View A&M University. The exhibit was juried by Kermit Oliver, a Houston artist, who selected a variety of two and three dimensional works. The Art League is located at 1953 Montrose, Houston, Texas. The public is cordially invited to attend the opening reception.

FOR YOUR INSURANCE and REAL ESTATE NEEDS WALLER INSURANCE & REAL ESTATE

JACK WARREN
Owner

Direct Houston Phone

463-1871

Office Phone 372-3689



Panthers Face Southwest Texas Saturday

CONTINUED from Page 1
physical ability to play with any opponent on the schedule. The key will be in the attitude, team unity, positive work habits and desire of each player to get better every day on every play," Wacker said.

Finding a quarterback was his biggest concern prior to the season and with the season opening victory looks as if an adequate replacement has been found.

Panther coach Jim McKin-

ley called Southwest Texas State "awesome."

"We will be playing a very good football team. They are well coached. The key is defense in this game for us," McKinley said.

McKinley was disappointed

with the Panther offense in last weeks loss. "We made a lot of mistakes against Stephen F. Austin. I was real surprised that we didn't score. The defense played well but the offensive line was inconsistent. We had the ball near the goal

line three or four times and could not score," McKinley added. "Stephen F. Austin was able to capitalize on our mistakes but we were not able to capitalize on theirs."

McKinley said the Panthers came out of the ball with no injuries and he said he would make just a few lineup changes



DR. WOOLFOLK NAMED TO NATIONAL COMMISSION — Dr. George R. Woolfolk, head of the Department of History at Prairie View A&M University, has been appointed to the prestigious Mellon Fellowships in the Humanities for a five-year term ending with the 1987-88 academic year. College seniors are eligible to present evidence of outstanding academic promises to begin graduate work, preparing for a career of teaching and scholarship in the humanistic field of study.

Panthers Open Cross-Country Season Saturday

Defending Southwestern Athletic Conference champion Jackson State will help Prairie View open the 1982 cross-country season in a dual with both the men and women's teams Saturday.

Panther coach Hoover Wright has 13 runners competing for the top spots including six back from last year.

"We hope to improve our position from last year," Wright said. The Panthers finished seventh in the SWAC cross-country championship last year and will host this year's league championships November 1.

Top prospects for Wright include Galveston sophomore Ernest Bell, East Bernard sophomore Louis Davis, Dallas junior Eric Pierce, Lake Charles, Louisiana, Senior Mark Roy and Raywood junior Mel Trahan.

Of the top prospects Roy is the only letterman winning a letter in the 1980 season.

Ms. Barbara Jacket, women's coach, also feels optimistic about her squad.

Top returnees for Ms. Jacket's squad are Houston senior Easter Gabriel and Sheila LaBome and Houston sophomores Cynthia Bosie and Calatta Ross.

for the Southwest Texas game. Lindsay West, a junior from New Orleans and Michael Sheffield, a freshman from New Orleans moved up a notch into the starting lineups. West — and right guard and Sheffield at left guard on offense. Defensively, Leo Benford moved ahead of Steve Bennett at free safety.

Thermos bottles the astronauts take into space can keep coffee warm for two years.

In Track and Field News

Panthers Get High Ranking

Coach Barbara Jacket's relay teams were ranked second in the overall ranking in the top 1982 relay rankings in the August issue of the Track and Field News.

The Pantherettes were second behind Tennessee in the overall standings based on performances from the 1982 season. The Pantherettes were ranked fifth in the 1600 meter relay, second in the 800 meter relay, sixth in the 400 meter

relay and first in the sprint medley relay.

The foursome of Lynn Gamble (junior from Port Arthur), Loretta Edwards (senior from Houston), Cassandra Graham (sophomore from Austin) and Eastern Gabriel (junior from Houston) were timed in 1:38.85 in the spring medley relay in the SWAC championship meet on the Prairie View campus May 6. That was the top time in the nation.

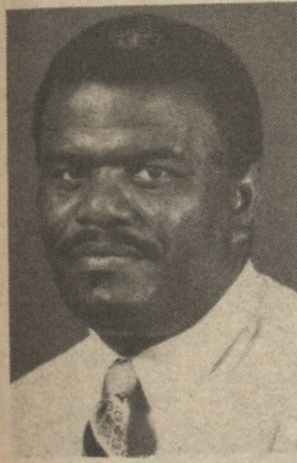
The Lady Panthers best time in the 1600 meter relay was 3:33.20, good for a fourth place finish in the NCAA Outdoor Meet in Provo, Utah. Running on that foursome were Sheila LaBome (junior from Houston), Edwards, Gamble and Gabriel.

The team's best performance in the 800 meter relay was in the March at the Texas Southern Relays. Edwards, Graham, Gabriel and LaBome turned in a time of 1:35.17 good enough for a second place ranking.

The 400 meter relay team finished sixth in the NCAA Outdoor with a time of 44.98 in June. Running on that team were Gamble, Graham, Edwards and Gabriel.

Over the course of the season the Pantherettes finished first in 29 of 36 relay races.

The Pantherettes finished as national champions in the NAIA Outdoor Meet, second in the NAIA Indoor Meet and tied for 10th in the NCAA Outdoor Meet.



Johnnie Williams

Women's Basketball Coach Named

Johnny Williams, a member of the Prairie View coaching staff the past two years will assume additional duties as women's basketball coach announced Dr. Marion Henry, athletic director.

Williams replaces Charlene McWhorter Jackson who had been named women's basketball coach in April replacing Harry Gunner. Henry said Ms. Jackson recently married and indicated she would not return to Prairie View in the fall bringing about the change.

Williams is in his third year as assistant football coach at Prairie View. He also served as golf coach last year but will give up those duties to take on the women's basketball team, Henry said.

"We'll make a decision on who will take over the golf team as we progress into the year," Henry said. "But this was a decision we had to make rather quickly."

Prior to joining the Prairie View staff Williams built an impressive high school coaching record including basketball.

As a high school coach in Florida he won state championships in football and basketball winning state championships at Florida A&M High in 1973, 1974 and 1976.

Panthers Lose Opener

The Prairie View coaching debut of Jim McKinley was spoiled at the hands of Stephen F. Austin before a crowd of 10,125 in Lumberjack Stadium Thursday night in a 17-0 decision.

Midway the second quarter Stephen F. Austin, under first year coach Jim Hess, got a break when a fumble was recovered on the Panther 17 yard line by defensive tackle Erik Brown.

Five plays later junior running back Elvis McBride went in for a touchdown and Ron Roberson kicked the extra

point. On the next series the Lumberjack defense set up another touchdown by blocking a Wilbert Meyers punt on the Prairie View 32-yard line.

Quarterback Tod Weber wasted little time as he rolled right and hit wide receiver James Noble for a 15 yard gain and a first down. On the next play Weder found freshman wide receiver Floyd Dixon in the end zone for a touchdown with 6:20 left in the half.

The second half turned into a defensive struggle as both teams struggled with penalties and outstanding defensive



STAFF PICNIC — Members of the University faculty, staff and their families were guests of Acting President Nelson at a picnic which followed the annual staff conference held in August. There was plenty food, recreational activities and opportunity to get together and relax.

plays until early in the fourth quarter when the Lumberjacks mustered up a 54-yard drive that ended in a 31-yard field goal by Roberson.

Panther fullback Howard Grant rambled for 95 yards on 16 carries but the Panthers

were hampered by mistakes losing two fumbles and tossing three pass interceptions.

Defensive back Willie Thomas, lineman Darren McAllister, linebacker James Hayes and end John Zachary were among the defensive standouts

for the Panthers. Thomas broke up two passes and intercepted another. McAllister had an excellent pass rush making two quarterback sacks. Hayes had seven total tackles and Zachary had an outstanding defensive game.

SWAC 1982 FOOTBALL PRESS TOUR

FOOTBALL SPECIAL

JACKSON
BATON ROUGE
HOUSTON
SHREVEPORT

GSU PV

24-HOUR SELF SERVICE
at
HEMPSTEAD WASHATERIA
TOP LOADING SPEED QUEEN
and
DOUBLE-LOAD PHILCO BENDIX MACHINES
Next Door to Pick & Pay Food Market
Hempstead, Texas
YOUR PATRONAGE APPRECIATED!

PRESCRIPTIONS — DRUGS

Where You Get More Than Just
A Welcome and Good Service

CITY DRUG-HEMPSTEAD
826-2496 W. W. Wilkes, Owner

CITIZENS STATE BANK

MEMBER F. D. I. C.
P. O. Box 575 Phone 826-2431
HEMPSTEAD, TEXAS

Show Your Lite Beer Spirit!

Order these T-Shirts for only \$5.00.

Proclaim yourself a "Famous Lite Beer Drinker" or tell your friends the real definition of Lite when you wear these new T-shirts available from Lite beer for only \$5.00. Featuring Lite's popular blue and white colors, these comfortable shirts are right for any time that you want to enjoy great tasting, less filling Lite beer.



Lite Mail this coupon and a check or money order for the total amount to:
Lite Beer T-Shirt Offer
P.O. Box 1153
Milwaukee, WI 53201

"I'm a Famous Lite Beer Drinker" T-Shirt (\$5.00 each)
(Quantity) _____ Small _____ Large
_____ Medium _____ X-Large

Lite Beer Dictionary T-Shirt (\$5.00 each)
(Quantity) _____ Small _____ Large
_____ Medium _____ X-Large

No purchase necessary. Allow 4-6 weeks for delivery. Void in Ohio, Kentucky and where prohibited by law. Wisconsin residents add 4% sales tax. Offer expires June 30, 1983.

1982 Miller Brewing Company, Milwaukee, Wisconsin