

Prairie View A&M University

Digital Commons @PVAMU

PV Standard Newspapers

Publications

12-1957

The Prairie View Standard - December 1957 - Vol. XLVIII No. 4

Prairie View Agricultural and Mechanical College of Texas

Follow this and additional works at: <https://digitalcommons.pvamu.edu/pv-newspapers>

Recommended Citation

Prairie View Agricultural and Mechanical College of Texas. (1957). The Prairie View Standard - December 1957 - Vol. XLVIII No. 4., *Vol. XLVIII No. 4* Retrieved from <https://digitalcommons.pvamu.edu/pv-newspapers/206>

This Book is brought to you for free and open access by the Publications at Digital Commons @PVAMU. It has been accepted for inclusion in PV Standard Newspapers by an authorized administrator of Digital Commons @PVAMU. For more information, please contact hvkoshy@pvamu.edu.

Texas Southern Is P. V. Opponent In Jan. 1 Bowl Classic

Texas Southern University has been selected again to play in the Prairie View Bowl Classic scheduled New Years Day in Houston's Public School Stadium.

This is the 30th playing of the holiday classic in Houston. Unique among the New Years Day Bowls, Prairie View A. & M. College always serves as host and invites some of the major Negro college teams in the nation.

Purpose of the classic is to provide local holiday entertainment and to bring to the area some of the best football talent. TSU has been a favorite selection in recent

years because of the rivalry between the two schools and its location in the city of Houston. Prairie View and TSU have been perennial strong powers in the Southwestern Conference.

The Panthers and Tigers of TSU have met five times in the classic with the Panthers' holding a 3-2 edge in the win column. Prairie View has won a total of 18 of the 29 games and lost 9, tied two.

Season's records for the two teams are: Prairie View 6-2, TSU 7-3. The Panthers' conference record is 4-1 and TSU's 4-2.

Panthers May Tie With Wiley College In SW Conference Football Race

The Southwestern Negro College Championship Title will be at stake Saturday when unbeaten Wiley College invades once defeated Prairie View A. & M. in the season's climax at Blackshear Field.

Powerful Wiley, 1956 Conference Champs, can maintain a perfect record finishing far ahead of the other three conference contenders if they can pas the Panthers Saturday. The best that Prairie View can do is tie for the title by beating the Wildcats. The Panthers dropped their first league game 18-13 to Southern in Baton Rouge last week.

Panther victories in November included a 20-13 win over Texas College and 19-0 trouncing of Langston. Their two setbacks came at the hands of Tennessee State 32-7 and Southern 18-13.

The Southwestern Conference

Game Summaries

TEXAS COLLEGE		T.C.	
	P.V.		
First Downs	18	13	
Net Yard Rushing	202	136	
Passes Attempted	13	11	
Passes Completed	7	4	
Yards Gained Passing	118	80	
Total Net Yardage	320	226	
Passes Intercepted	1	1	
Fumbles	4	3	
Oppo'n's F'mbl's Rec'd	3	3	
No. of Punts	4	7	
Punt Averages	20.1	31.4	
No. of Penalties	4	3	
Yards Penalized	75	35	

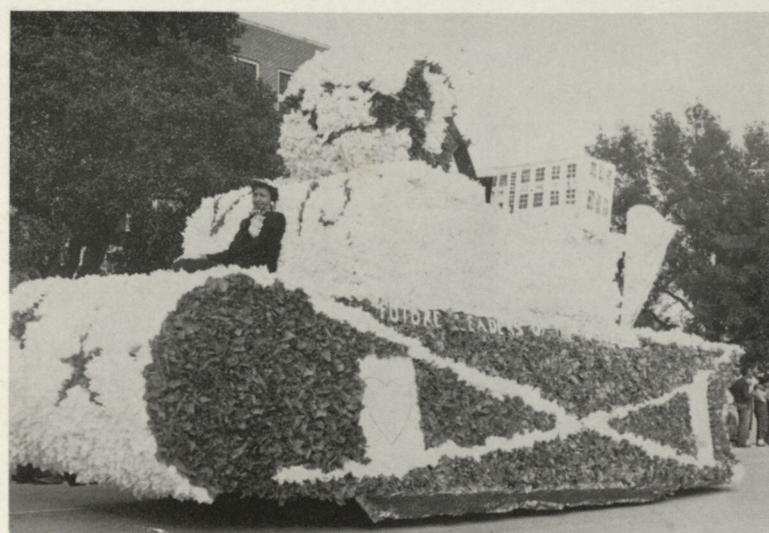
ranking before Saturday's game appears as follows:

	Won	Lost
1. Wiley College	5	0
2. Prairie View	5	1
3. Texas Southern	4	2
4. Southern U.	4	2
5. Arkansas A. & M.	2	4
6. Texas College	1	5
7. Langston	0	6

LANGSTON UNIVERSITY		L.U.	
	P.V.		
First Downs	11	1	
Net Yard Rushing	83	4	
Passes Attempted	1	5	
Passes Completed	0	0	
Yards Gained Passing	0	0	
Total Net Yardage	83	4	
Passes Intercepted by	3	0	
Fumbles	10	7	
Opp'n't Fumbles Rec'd	6	7	
No. of Punts	9	9	
Punt Average	31.7	24	
No. of Penalties	3	1	
Yards Penalized	15	5	

SOUTHERN UNIVERSITY		S.U.	
	P.V.		
First Downs	15	10	
Net Yard Rushing	291	174	
Passes Attempted	12	12	
Passes Completed	1	6	
Yards Gained Passing	10	72	
Total Net Yardage	301	246	
Passes Intercepted By	1	2	
Fumbles	2	6	
Opp'n't's Fumbles Rec.	0	3	
No. of Punts	5	7	
Punt Averages	33	57.3	
No. of Penalties	7	5	
Yards Penalized	55	55	

TENNESSEE STATE		T.S.	
	P.V.		
First Downs	7	13	
Net Yard Rushing	74	65	
Passes Attempted	12	13	
Passes Completed	2	9	
Yards Gained Passing	27	198	
Total Net Yardages	101	263	
Passes Intercepted by	4	5	
Fumbles	1	5	
Opp'n't's Fumble Rec.	1	2	
No. of Punts	9	3	
Punt Averages	20	29.1	
No. of Penalties	9	9	
Yards Penalized	50	105	



HOMECOMING PARADE . . . Despite postponement of the giant parade because of rain on homecoming day, students and faculty staged the annual event on Tuesday following. First place prizes went to: (1) Student NEA (departmental) (2) San Antonio Club, (3) Veterans and LBS Club float, (4) Department of Women float and (5) School of Engineering float.

Homecoming Activities

(Continued from Page 2)

ing Sunday evening during Alumni Vesper Services. She was Mrs. Ida C. Shaw '47 of Houston. Lillian Jackson, senior co-ed from Bay City, is Miss Prairie View.

High point of the week-end was the performance of the Harry T. Burleigh-Booker T. Washington High School Chorus from Wichita Falls. Directed by Mrs. Gwendolyn

McDonald Jackson '40, the group gave an outstanding and unique program especially appealing to the College student body and enjoyed by all. The dynamic personality of Mrs. Jackson is a source of pride to alumni everywhere. Miss Doris Fay Malone '56 directed dance routines and J. W. McCauley directed the concert orchestra.

THE PRAIRIE VIEW STANDARD

Following Campus Visit - - -

System Directors Approve \$2.7 Million For New Construction

Directors of the state-wide Texas A. & M. College System have approved nearly three million dollars for building construction at Prairie View A. & M. College.

Following a full day's visit of the College on Monday, the Board of Directors met officially Wednesday at College Station and approved a \$14 1/2 million building program for the entire system of colleges and services. The new

building represent the first quarter of a 10-year program set up after a year's study of needs and plans for future development of colleges and services in the Texas A. & M. System.

Scheduled for construction at Prairie View soon is a million dollar student center. The building will cost \$850,000, with equipment totaling \$150,000. A 1.2 million dollar science building with \$300,000

in equipment has also been earmarked for Prairie View. Other immediate construction includes utility and street extensions—\$15,000, and sanitary fill and equipment—\$50,000.

Plans for the new students center have been completed and bids for construction are expected to be opened soon.

The directors expressed a need

for two new dormitories during their visit of the Prairie View campus. While no official construction plans were made, it is expected that an amortization arrangement will be worked out soon to build additional housing units for men and women students living at the College.

A Dare to Be Christian - - -

'Y' Leadership Institute Attracts 800 Delegates from 4 Southwestern States

"Do We Dare Be Christians" was the theme for the twenty-second annual YMCA Leadership Training Institute scheduled at the College December 6-8.

Dr. Ralph W. Riley, pastor of Hopewell Baptist Church, Newark, New Jersey, was the keynote speaker for the three-day Institute which was under the auspices of the Southwest Area Council of Young Men's Christian Associations. He is a former YMCA Secretary and President of the American Baptist Theological Seminary.

More than 400 youth representing Christian organizations in Arkansas, Louisiana, Oklahoma and Texas attended the Institute. One hundred and fourteen adult leaders, including representatives from the College staff, participated in the conference which is designed to train young people for community leadership.

Workshops and special activities were held for various age groups members and students.

in the Junior and Senior Hi-Y and Tri-Hi-Y and the Gra-Y and Tri-Gra-Y. Workshop topics included: (1) Christian Responsibility; (2) Techniques for Program Planning and Evaluation; (3) How to Tell the Story, and (4) Working Together as a National International Movement.

General assembly programs were planned for Friday evening at 7:00 P.M., also Saturday morning and Sunday morning worship services. Speakers included Dr. Riley; Dr. E. B. Evans, Prairie View A. & M. president; Dr. J. L. Brown, conference director; and the Reverend L. C. Phillip, dean of the chapel, Prairie View. Other features were a Talent Show, movies, football game, and social activities.

Conference coordinators included Dr. Brown, director; Area Associate, Secretaries W. E. Hogan, Dallas; and W. S. Douglass, Tyler; and a host of Prairie View faculty

were held for various age groups members and students.

Religious Emphasis Week-Dec. 8-11 Opens Christmas Holiday Activities

Religious Emphasis Week was observed at the College on December 8-11.

"A Dare to Be Christian" was the theme of the four-day observance which opened Sunday, December 8 with a sermon by Dr. Ralph Riley, pastor of Hopewell Baptist Church, Newark, N. J. Dr. Riley spoke on the theme emphasizing man's relationship to man.

A special convocation Monday, December 9, featured an address on the interracial aspects of the theme by Father Charles Hood, pastor of the Episcopal Church, Tomball, Texas. Monday evening's session featured an address by the Reverend E. A. Smith, president of Rusk College, Holly Springs, Mississippi, who spoke on the subject, "A Dare to be a Christian in

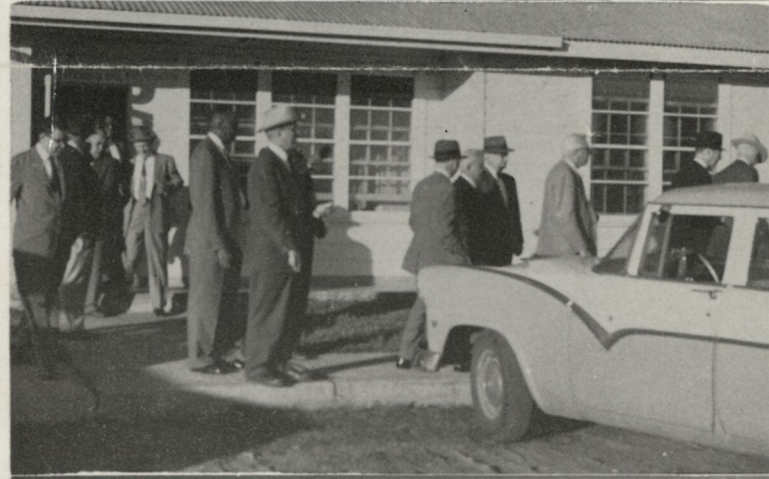
our Everyday Living." Informal group meetings were held following general sessions both Sunday and Monday evenings.

Tuesday evening's regular prayer meeting, which attracts more than a thousand Prairie View students, was a part of the religious week activities.

Holidays Begin at Noon December 21

The College will observe Christmas holidays beginning at noon on Saturday December 21. Classes will resume on January 2.

Students and faculty members are invited to attend the New Years Day Parade (11:00 A.M.) and P.V. Bowl Classic in Houston on January 1, 1958.



BOARD OF DIRECTORS VISIT . . . Scenes above were taken during a recent visit of directors and officials of the Texas A. & M. College System. The College officials held a formal session and then toured most of the campus talking with teachers and students. These photos were taken in the Division of Industrial Education, exteriors of the poultry farm and Suarez Hall. Several PV Officials accompanied the Board on the campus tour.

The Prairie View Standard

DECEMBER 1957
News of Prairie View A. & M. College



Library



Dr. Evans Named On Interracial Committee

Dr. E. B. Evans, president of Prairie View A. & M. College, has been appointed a member of the Committee on the Interracial Service of the National Council, Boy Scouts of America.

The announcement came from A. Schuck, Chief Scout Executive of the National Organization with headquarters in New Brunswick, N. J. Dr. Evans' appointment was recommended by the organization's president, Kenneth K. Bechtel.

Doctor Evans has been a leader in Boy Scout work in Texas over the past thirty years. The first camp for Negro Youth in Texas was established at Prairie View under his leadership, and he has continually shown interest in character building through scouting activities.

He is the recipient of the Silver Beaver and Silver Antelope Awards and has been honored on several occasions for his leadership in this field of service.

Staff Members Report Research

The members of the College staff will present research papers before the Texas Academy of Science during the 61st annual meeting of the organization at Southern Methodist University, Dallas on December 12-14.

Dr. T. P. Dooley and George Mercer presented a paper entitled "A Preliminary Report on the Development of Curculio Victorien-sis."

In the social science section, Dr. W. L. Cash, Jr. spoke on "The Relationship of the Minnesota Multi-phasic Personality Inventory and Aptitude Test to Achievement in Nursing Education." Dr. A. A. Dunson presented material on the subject: "Languages: Means of World Peace and Understanding."

San Augustine Alumni Added

The list of organized alumni clubs printed in the November Standard did not carry the name of the San Augustine organization.

Officers of the Prairie View San Augustine Club are S. J. Nickleberry, president; and Mrs. Minnie O. G. Williams, secretary.

Season's Greetings

Office of the President
Prairie View A. & M. College

As we approach the holiday season and the close of the calendar year, 1957, may I, on behalf of the Administration, express sincere thanks to the students, faculty, alumni and all members and friends of the Prairie View Family for your interest and assistance in the promotion of our total educational program here at Prairie View.

Merry Christmas to all, and may each of you enjoy the best of success and happiness of the coming New Year.

E. B. EVANS, President

The Prairie View Standard

Published monthly during the school year except July and August by Prairie View A. & M. College, Prairie View College Branch, Hempstead, Texas.

Entered as second-class matter, March 2, 1911, at the Post Office at Prairie View A. & M. College Branch, Hempstead, Texas under the act of March 3, 1879.

Acceptance for mailing at special rates of postage provided for in section 109, Act of October 3, 1917; authorized July 13, 1918.

E. B. EVANS, Editor-in-Chief
C. A. WOOD, Managing Editor

Printed by
The Prairie View A. & M. College Press



VISITING SPEAKERS . . . Andre Crispin (left) representing the Belgium Consul was guest speaker at a recent meeting of the American Survey Clinic. Herbert Bisnoe, shown with Dr. G. R. Ragland (Middle photo) is Director of Curriculum Study for the Council on Social Work Education, New York City. Dr. John Kultgen, SMU professor, addressed the English Institute.

Attendance at Homecoming Activities Breaks Record—Despite Bad Weather

Many observers placed the number of returning grads and visitors to homecoming programs far ahead of previous years, despite the worst weather ever experienced on these occasions.

Still hoping for a break in the weather, hundreds of Prairie Viewites converged on the campus Friday evening in time for the annual breakfast dance which started at mid-night. The Recreation Center could hardly hold the fun-seekers—many making their first homecoming appearance since leaving the College.

The music was the best ever—coming from smooth rhythm of James Williams and his East Texans. Williams is a 1948 graduate of the College and the alumni sponsors were truly proud of his accomplishments.

The Homecoming meeting of the general Alumni and Ex-Students Association held Saturday morning was almost rained out but a faithful few attended. The program included business activities by Alumni president, E. E. Cleaver

'38, Lufkin; Mrs. Hattie Flowers, Brenham; board chairman, Dr. "Ted" Hunter '26, Tyler; and membership chairman J. J. Woods, '38, Prairie View.

A memorial service featured a message by Reverend Ira B. Loud '30 of Dallas. Others on the program included Mrs. Lee C. Phillip, Harold Cotten, Reed Jones, Miss Mabel Kilpatrick and Miss Jean Norris. President E. B. Evans spoke to the group on the subject: The Philosophy, Role, Scope and Relationship of an Alumni Association with a first-class effective program as it relates to the College.

The fact that the Panthers downed Langston's Lions 19-0 in a mud battle is already news, but the amazing fact was the large number of fans who braved the cold and constant rain to witness the battle.

The big parade and appearance of "Miss Homecoming" and "Miss PV" was cancelled but local followers were to see Miss Homecoming (Continued on Page 4)



FOREIGN VISITORS . . . Business and agricultural leaders from Yugoslavia were guest of the College in November. Shown with Waller County, College Station and Prairie View host, the foreign leaders visited the entire agricultural lay-out seeking information on the Extension Service, Experiment Station and Farm Service.

College Observes Nutrition Week

The School of Home Economics held its annual Food Show and Nutrition Week on December 2-6. The theme for the observance was—"Good Food, Good Health, Good Looks."

Miss Mary Kulhman, consultant with the American Institute of Baking, Chicago, Illinois gave a food demonstration on Wednesday, December 4.

The School of Agriculture and the Department of Cooking and Baking cooperated with exhibits.

Open house was observed in the new Home Economics building during the occasion. Other activities included exhibits and a movie, "It Started with Eve."

Work of PV Art Instructor Cited

Leroy C. Weaver, art instructor at Prairie View A. & M. College, was one of fifteen artists receiving awards totaling \$1,800 for winning entries in the annual Houston Artist Show held last week.

Weaver's print was titled "Kites" and the medium used was etching and dry paint.

The exhibition, to last through December 11, is the 32nd of the work of Houston artists sponsored by the Museum of Fine Arts. The Art League, location of the exhibition, is at 906 Tuam Avenue, Houston.

President is Guest Of Denver Alumni

President E. B. Evans was guest speaker at a special meeting of the Denver, Colorado Alumni Club during his visit to that city to attend the convention of land grant college officials. Dr. T. P. Dooley, Dean of the School of Arts and Sciences attended the Denver Conference also and represented the institution in the A. & S. sectional meeting.

Some 170 Prairie View Alumni live in Colorado, according to Theodore Davis, president of the local Denver club.



CHEERLEADERS . . . Congratulations go to this fine organization of cheerleaders who performed well during the football season. They are now stationed at basketball games—lending some organization to the cheering on these occasions.

Career Conference Planned—

Seeking Employment Opportunities For Graduates is College Goal

Increased emphasis in the ever present job of seeking to expand employment opportunities for Prairie View graduates is everywhere present in programs and activities of the College.

This fact was a guiding principle in early planning meetings for the all-college career conference scheduled on January 26-27. A great deal more thought and seriousness entered in the planning as faculty and student representatives alike looked ahead to the changing scene in Negro employment.

Of greatest concern was the problem of student potential. "Are our students getting what is vitally needed to meet the opportunities now available" is the question so

often raised. Because so many young people still insist on preparing for a teaching career, it is evident that a program of vocational guidance is most imperative.

The question of minimum standards versus high standards was discussed by career conference planners as a basic problem in student preparation. It was the consensus of opinion that if Negro youth are to be prepared to serve in this atomic age, emphasis must continue toward higher standards of training. This is the job the college can do, in addition to helping open doors traditionally closed to our graduates.

Representatives of several busi-

Interests of Negro Youth to be Aired

The College Research Committee has begun work on a study of Interests of Negro Youth in Texas, their annual study which becomes the theme of the 1958 Conference on Education.

This is a continuation analysis of data from the Cooperative Youth Study and the work is being done in collaboration with the Texas Education Agency, The Hogg Foundation, University of Texas, and several colleges and universities in the state. Last year's program was concerned with problems of adjustment of Negro Youth.

The committee will seek to determine the levels of interests of youth in factors related to personal, social, family and community living. Relationships between interests and levels of adjustment and between interests and socio-economic levels are being sought.

Community action programs starting with curriculum studies in public schools may be the outcome of the Cooperative Youth Study program which is now in its third year. Teachers of Home and Family Life Education, from whom the study originated, have already begun reshaping curricular activities on the basis of these findings.

Committee members include: H. J. Brown, Educational Measurement; J. L. Brown, Economics; W. L. Cash, Jr., Psychology; S. W. Davis, Education; J. M. Drew, Dean of Instruction; Mrs. E. M. Galloway, Dean, School of Home Economics; Miss Lois Mitchell, Sociology; E. M. Norris, Department of Agriculture; George R. Ragland, Sociology; A. D. Stewart, Mathematics; C. A. Wood, Chairman; and G. R. Woolfolk, History.

ness and industrial firms are being invited for the conference and each student, freshman through seniors—will have an opportunity to hear first hand about the opportunities and requirements for various types of jobs.

The stepped-up career conference is only one of the many special projects planned to set Prairie View Students on the right track toward needed and worthwhile service in this democratic land.

Faculty Sponsors Football Dinner

The annual stag dinner for football players was held on November 26 with several faculty members picking up the tab.

The occasion is always a jolly one with coaches and players having plenty of time to express themselves. Purpose of the get-together is to talk football—particularly chances of a conference championship.

Speakers for the dinner were R. W. Lewis, W. H. Stickney, Coach W. J. Nicks and President E. B. Evans.



President E. B. Evans and Dean T. P. Dooley visit with Denver, Colorado PV Alumni Club members.