

Prairie View A&M University

Digital Commons @PVAMU

PV Standard Newspapers

Publications

10-1956

The Prairie View Standard - October 1956 - Vol. XLVII No. 2

Prairie View Agricultural and Mechanical College of Texas

Follow this and additional works at: <https://digitalcommons.pvamu.edu/pv-newspapers>

Recommended Citation

Prairie View Agricultural and Mechanical College of Texas. (1956). The Prairie View Standard - October 1956 - Vol. XLVII No. 2., *Vol. XLVII No. 2* Retrieved from <https://digitalcommons.pvamu.edu/pv-newspapers/217>

This Book is brought to you for free and open access by the Publications at Digital Commons @PVAMU. It has been accepted for inclusion in PV Standard Newspapers by an authorized administrator of Digital Commons @PVAMU. For more information, please contact hvkoshy@pvamu.edu.

SPORTS NEWS

Despite 0-1 Record

Panthers Can Still Figure In Mixed-Up SW Conference Race

The Panther's 13-7 loss to Texas Southern on October 6 may have spelled doom to many loyal fans, but actually they could come back to win or tie the mixed-up Southwestern Conference football race.

Panther coaches are already figuring that they have a whole season to get ready for the surprising Wiley College Wildcats, who have thrown the whole projected conference race out of prospective. They clipped TSU early in the season and have taken the top position among the teams most likely to contend.

Prairie View's present 0-2 record for the season will likely get another drudging when the Panthers meet Tennessee State in the Cotton Bowl on October 15. Tennessee romped over a strong Langston University eleven 46-7 in their opening game for the season.

Panther hopes will lie in several freshmen and sophomore players who appear to be developing rapidly. Performances in the first two games definitely showed a lack of

seasoned men in the line-up. There were many mistakes, and many unused opportunities to take advantage of "the breaks." Panther mentors feel that much of this can be ironed out as the season gets underway.

Texas College to Play Homecoming

The Prairie View Panthers will meet the strong Texas College Steers on Homecoming day, November 3. The annual Panther-Steers battle is always a highlight of the football season.

Work of Art Teacher Receives Recognition

Pearl E. Sewell, College Art Instructor, has recently had an entree of her work selected to be included in the 1956-57 Art Rental Service Collection of the Contemporary Art Museum. The title of Miss Sewell's entree was "Night Catch."

Teacher Education Has Top Ranking Position in Total College Program

A faculty study on the Teacher Education objectives in the College program was completed in 1955-56 and data furnished to the Texas Education Agency.

President E. B. Evans has requested continued study of these objectives with the view of revision at points of need. Dean J. M. Drew served as chairman of the large

faculty group, representing all schools, which made the study last year, and this same group will continue to function in the follow-up study.

The officially adopted policy statement, which was prepared by a sub-committee of which Dr. T. R. Solomon was chairman, assures an important position for Teacher Education as one of the major objectives of the institution.

Additions and Changes

Continued from Page 3

Duquesne University; Jewel Berry, Ph.D., Notre Dame; Dorothy Bowman, M.A., South Carolina State; Terry Brookins, M.A., University of Pennsylvania; L. L. Byrd, M.A., New York University; Alvin Coleman, M.S., Michigan State; Emma Darnell, M.A., Columbia University; Mary Dickey, M.S., University of Minnesota; Azores Dotson, B.A., Wiley College; Luther Francis, M.S., Prairie View; Lucy Goodspeed, B.A., Prairie View; Brucey Gray, B.S., Prairie View; Gene Hall, Trade Certificate, Langston University; Joe Hampton, B.S., Prairie View, M.S., Bradley University; Donald Hill, M.Ed., University of Missouri; Kenneth Hunt, B.A., Prairie View; Rose Hynes, B.S., Philander Smith; Broadus Jackson, M.A., Indiana University; Norman Johnson, M.A., University of Michigan; Tobe Johnson, M.A., Columbia University; Robert Jones, B.S., Huston - Tillotson; Larry McGhee, B.S., Southern University; Lollie Z. Marshall, B.A., University of Michigan; H. Eunell Martin, M.Ed., Prairie View; Morgan Maxwell, M.B.A., University of Southern California; Harriett Mitchell, M.A., Atlanta University; Willie Owens, B.S., Huston-Tillotson; Indiana Page, B.S., Lincoln University; Richard Price, B.S., Prairie View; James Randolph, M.A., Western Reserve University; Caesar Roy, B.S., Prairie View; James Smith, M.F.A., University of Southern California; Bertha Starks, B.S., Prairie View; Carrie D. Stokes, M.A., New York University; and Willie Ann Williams, B.S., Michigan University.

Prairie View's role in Teacher Education did not happen by accident. When the college was established in 1876 as the Agricultural and Mechanical College for the Colored Youth of Texas, no students enrolled, and in 1879 the Texas Legislature authorized the establishment of the Prairie View Normal for the training of colored teachers for the public schools.

State scholarships were provided for many of the students and all graduates were required to pledge that they would spend at least one year as a teacher in the public schools. This practice prevailed until recent years, (1954) when the college became, under Legislative Acts, an all purpose institution, serving three major educational functions.

The objectives of the institution have been re-worked, revised and re-edited many times, but essentially the dominant position of teacher education has been maintained. For each teacher education curriculum at Prairie View there is a feeling that every course in the curriculum should have a definite relationship to the teacher education function. Thus, every college teacher becomes a teacher trainer and every course directly or indirectly a teacher education course.

Recent enrollment data bears out the present interest in teacher education at Prairie View. Of the 613 classes offered in 1955-56, a total of 73 were directly teacher education courses, and this number was exceeded only by liberal arts with 232 classes.

THE PRAIRIE VIEW STANDARD

1000 Freshmen

High Enrollment Trends Continue

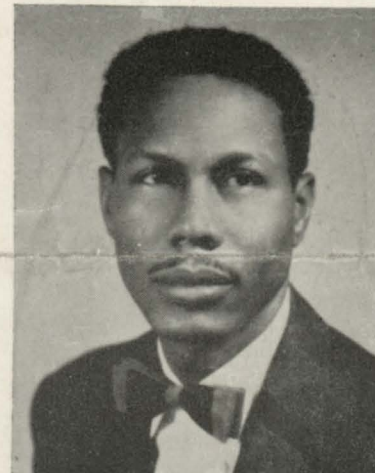
Approximately 1000 freshmen have enrolled for the new term at Prairie View, as total enrollment figures continue to rise.

While official total figures have not been released by the Registrar's Office, there is an indication that the final figure for total enrollment without duplication will slightly exceed the 2986 recorded in 1955-56. A complete official count of graduate and extension classes has not been made at this time.

Enrollment projections prepared by the Registrar indicate that, under normal conditions, Prairie View should pass the 3000 mark in enrollment this year, and is expected to climb around 3600 in the next ten years, and above 4000 students by 1970. These figures are based on an assumed percentage of increase, computed annually, and giving consideration to the rapid growth of the college age population.

The Registrar's figures show a continued increase in enrollment at the college since the 1946-47 term. The highest percentage of increase (18.6) occurred the following year, 1947-48 and the lowest in 1951-52, (0.15). The 6.6 percent increase in 1955-56 was the highest since 1950.

LOCAL ALUMNI



OLIVER E. SMITH

HEADS HOMECOMING PLANNING GROUP . . . Local Alumni President, Oliver E. Smith is in charge of local arrangements for the Homecoming celebration scheduled November 2-4. Miss Delia M. Hunt and J. L. Hill are in charge of special activities.

An interesting factor about Prairie View enrollment is that it represents practically all of Texas where Negro scholastics live. Every county in the Eastern half of the State is represented at the college and a majority of the West Texas Counties send students to Prairie View.

Homecoming Activities Planned; Programs Scheduled November 2, 3, 4

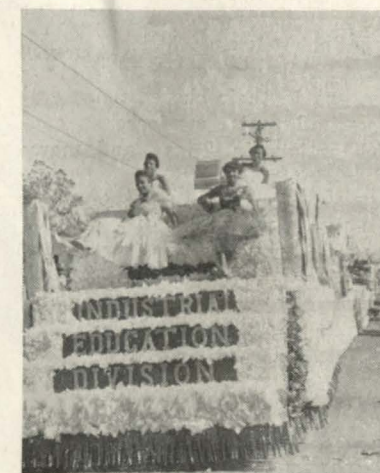
The 1956 Homecoming scheduled November 2-4 will be the biggest and best in history, if the efforts now being made by the local Prairie View Alumni Club and students and family of the College can be used as an indication.

Many committees have been selected and are now at work in developing programs for the big occasion. Faculty and student groups are well along with plans for decorations, floats, and many items for homecoming color. The feature event, of course, is the big game Saturday, November 3 with the Panthers meeting Texas College.

Local Alumni President Oliver Smith is heading a large planning committee here. J. L. Hill is chairman of the entertainment group. The parade committee has adopted the theme "Preparing for Tomorrow's Challenge" for use in organizing and decorating for the various festivities.

Friday, November 2, will be opening day for the big events. The giant bonfire and pep rally will be staged Friday evening to be followed by various social activities.

Meetings of the General Alumni Association are scheduled Saturday morning with the big game set to go at 2:00 P.M. The parade will start moving at 12 o'clock noon.



Preview of Coming Events . . . Floats, parades, decorations and rehearsals are in vogue on the campus now . . . in preparation for the big Day — HOMECOMING — NOVEMBER 2.

College Buildings Named for Osborne and Buchanan

The Board of Directors of the Texas A. & M. College System recently approved recommendations to name two Prairie View Campus buildings in honor of former principal J. G. Osborne (1918-1925), deceased; and George W. Buchanan, Professor of Mathematics, who is now living in retirement in Houston.

Official name for the college hospital is now the "J. G. Osborne Hospital," and the new dormitory for faculty men will be called "Buchanan Hall."

President E. B. Evans submitted the proposals to the Board following recommendations by the Alumni Association. He has sent letters of notification to Mr. Buchanan and to the widow and family of Dr. J. G. Osborne, also of Houston.

Dr. Osborne was the sixth principal at Prairie View and was distinguished for his outstanding service in the Natural Sciences and promotion of health services and education. The beginning of the four-year college course was accomplished during his administration. A medical doctor and former school principal and college professor, Osborne developed an

able staff at the college and was a champion for professional growth and faculty improvement.

His eye for good men is attested by the fact that his key appointees held high college posts for many years. Charles Lewis, former Business Manager; President Evans; Purchasing Agent, Harvey Turner; former Hospital Head, Dr. J. M. Franklin; Chief Engineer, F. G. Fry; and Dean of Home Economics, E. M. Galloway, and many others were brought to Prairie View by him.

George W. Buchanan's forty years at Prairie View were partly as student and as an employee in many capacities. He was, at various times between 1910 and 1950, Manager of the College Exchange Store, Librarian, Manager of the Dining Hall and Professor of Mathematics, Pedagogy and Science.

The genial "Mr. Buch" maintained an ardent interest in student and college activities, and became known and loved by thousands who studied and worked at the College over his long span of service.



PULLING FOR THE SCORE . . . Pretty Majorettes line up near the football action giving all they can to push across a score. The scene is Houston's Public School Stadium, P. V. versus TSU.

The Prairie View Standard

News of Prairie View A. & M. College of Texas



GIFT OF \$25,000 TO P. V. SCHOLARSHIP FUND . . . John T. Jones, Jr., right, President of the Houston Chronicle, discusses with President E. B. Evans terms of a \$25,000 gift for Scholarships. The gift, to be used to aid worthy students in home economics, was made by Houston Endowment Inc., of which Jones is president. This brings to a total of \$81,000 in gifts from Houston Endowment, philanthropic foundation established by the late Jesse H. Jones and Mrs. Jones of Houston.

Music Graduates In Recital Here On October 28

Talented Group Sponsored By Les Belles Lettres Club

Five graduates of the Prairie View A. & M. College Department of Music will be presented in recital in the College Auditorium on October 28. The talented artists are James Williams, Trumpet (Tyler); Kay Francis Jones, Voice (Dallas); Roy Hicks, Voice (Dallas); Fred Harvey, Piano (Tyler); and Bobbie Irving, Voice (Huntsville). All are outstanding performers in their chosen fields and have had vast experience as concert artists in Texas and many other states.

This rare music treat is sponsored by the Les Belles Lettres Cultural Club of the College, a group of twenty-four young women who are interested in developing cultural appreciation on the college campus.

Missionary Sponsors Nigerian Students

Miss Katherine D. Dick, missionary to Nigeria, visited the campus at the beginning of school in the interest of two young Nigerian students who are enrolled at the College.

Miss Dick, who has spent 25 years of missionary work in Africa, is responsible for the students. Her work in Nigeria has been principally in the field of Education and for the last five years, she has been associated with the "African Challenge," the largest newspaper in Africa.

She spent two days visiting the campus and will visit other college centers in the United States for about a year before returning to Africa.

Staff personnel in Vocational Education conduct annually an average of 15 conferences, with approximately 25,000 teachers and students in attendance.

The Prairie View Standard

Published monthly during the school year except July and August by Prairie View A. & M. College, Prairie View College Branch, Hempstead, Texas.

Entered as second-class matter, March 2, 1911, at the Post Office at Prairie View A. & M. College Branch, Hempstead, Texas under the act of March 3, 1879.

Acceptance for mailing at special rates of postage provided for in section 103, Act of October 3, 1917; authorized July 13, 1918.

E. B. EVANS, Editor-in-Chief
C. A. WOOD, Managing Editor



CLINIC OVERFLOW . . . The weekly Maternal and Child Health Clinic sponsored as a part of the Public Health Nursing Program is well crowded every week. These services are extended to all the neighboring communities.

Begins 3rd Year

Maternal and Child Health Clinic Serves Neighboring Communities

Among Prairie View's many services to Texas communities is the rapidly growing program of clinical health services rendered by the senior nursing students and public health nursing staff, and emanating from the local hospital.

Three years ago, public health nursing was added in the curriculum for collegiate nurses. Heading this program was Mrs. Sedelia Wilson, R.N., veteran health worker in Texas, and she was supported by the Director of Nursing and the entire division staff. It was a part of their program to provide actual experience in public health services for the nursing students enrolled.

In keeping with the objectives of this program, a clinic was established at the college to provide care for mothers and infant children. Mrs. Wilson and her students went into the county and neighboring communities to find the needs, and as they did so, the people continued to flow into the weekly clinic. This service grew rapidly, and now it is an important health program for the entire area.

Dr. E. B. Perry, Houston physician, has served as director of the clinical services since the beginning of the program.

Health Advisory Group Formed

In the expansion of clinical services, another vital health need was uncovered. As Prairie View nurses found taker's for their services, they also found many serious health problems, some which required the attention of specialists, and in almost all cases, among individuals and families who were unable to pay for special care.

To meet this need, the leaders of the program called upon the communities to help. Representatives of several communities in the county met about a year ago to

form what is now known as the Waller County Health Advisory Committee. This group is credited with bearing the cost of transportation and other incidental expenses in connection with many special patients located through the maternal and child welfare clinic.

Mrs. Willie Ann Williams is the public health nurse working with the clinic this year in the absence of Mrs. Wilson who is on leave from the college for a year of study.

The annual conference on the education of Negroes in Texas is perhaps the oldest of special efforts by the College to render community service.



INSTALLATION OF OFFICERS . . . Lt. Col. Thomas H. Wright, PMS&T is shown during installation ceremonies with Cadet Colonel Robert P. Hill.

Student Council Organization for 1956-57 is Set

The Student Welfare Committee of Prairie View A. & M. College has elected officers for the 1956-57 school year, and Miss Wilma Barnett, Houston coed and representative of the sophomore class group, was named chairman of this important student organization.

Composed of the presidents and representatives of each class and major campus organization, the committee is concerned with conditions, policies and activities which affect the general welfare of students.

Other officers elected included Holland Bynum (Houston) vice-chairman, Bobbie Nicholson (Omaha, Nebraska) recording secretary, Robert Coleman (Houston) corresponding secretary, Vernon Clark (Denton) treasurer, and Calvin Waller, (Baton Rouge, La.) parliamentarian.



HEADS STUDENT BODY . . . Wilma Rose Barnett, sophomore coed is chairman of the Student Council.

There are 101 Negro County Agents in Texas.

Internship Program Planned for Students In Cooking and Baking

Ten leading hotelmen representing the Texas Hotel Association met at Prairie View A. & M. College recently to work out an internship program for students enrolled in the Commercial Cooking and Baking department.

The Texas Hotel Association is cooperating with the College in a program designed to give additional practical experience to students in cooking and baking through on-the-job experience in the hotel industry. The Division of Industrial Education at the college offers a two-year trade course to prepare cooks, bakers, caterers, and supervisors of food services.

Hotel representatives attending the planning meeting came from business already selected to serve as internship centers. They were—George B. Adams, Lamar Hotel, Houston; J. N. Mae Cammon, Meadows Building, Dallas; Randall Davis, Adolphus Hotel, Dallas; Don B. Grady, Jack Tar Hotel Co., Galveston; Scott Hardy, Texas Hotel Association, San Antonio; Joseph Harper, Statler Hilton Hotel, Dallas; L. Marshette, William Penn Hotel, Houston; J. Top Newell, Grayson Hotel, Sherman; and Herbert Wilson, Manager, Hotel Fredonia, Nacogdoches.

The plan of internship calls for residence training at the College for the first nine months, after which the student will receive on-the-job training in these centers for alternating nine-week periods. The balance of the time is spent in accelerated in-school work. While on the job, the student will be rotated in the various departments of the food establishment and will receive wages for his services.

After graduation, students may have an option to choose employment in the hotel where he does his internship work or he may be placed in other commercial food preparation establishments. All graduates of the department are currently employed in their trade. They are presently located in major hotels and restaurants in Fort Worth, Houston, Galveston, Wichita Falls and Dallas.

Prairie View representatives meeting with the visitors included President E. B. Evans, Mrs. L. B. Smith, Miss Vivian Hubbard, J. L. Boyer, and A. I. Thomas, Director of the Industrial Education Division.

History Professor Publishes Article

Dr. George R. Woolfolk, professor and chairman of the Department of History and Philosophy has an article published in the October issue of *Mid-America: A Historical Review*. The title of Dr. Woolfolk's article is "Rival Urban Communication Schemes for the Possession of Northwest Trade."



PLAN INTERNSHIPS IN FOOD TRADES . . . Representatives of the Texas Hotel Association meet with college officials and instructors in planning an internship program for students in the department of cooking and baking. Visiting hotelmen represent the cooperating businesses where students will receive on-the-job-training.

Additions and Changes Made In 1956-57 College Faculty

Faculty additions and changes for the 1956-57 term at Prairie View A. & M. College have been completed and official announcements made by the deans, directors and president of the college.

Returning to the campus following a year's study leave are Mrs. M. S. Brannon (Columbia University), Director of the Division of Nursing Education; Alvin I. Thomas (Ohio State), Director of the Division of Industrial Education; and Melvin B. Tolson, (University of Paris), Associate Professor of French. Dr. E. M. Norris, Professor of Agriculture has returned to the staff following a year's leave to work with the

Fundamental Education program at Jarvis College.

A total of thirty-seven new members have joined the instructional staff, which represents mostly changes and a few additions. The Departments of English, Mathematics and History have recorded additions to their staffs. In addition to the new instructors, there are seven new persons employed in administrative services, five library assistants and sixteen new secretaries.

New members of the instructional staff are as follows: Annie B. Alford, B.A., Langston University; Bernard Anderson, M.S.,

See Additions and Changes, Page 4

Vocational Nurses Set State Meeting Here Nov. 17-18

The Texas Colored Vocational Nurses Association will hold its State Convention at Prairie View A. & M. College on November 17-18.

Highlights planned for the annual convention include a workshop period, and a panel discussion which will include hospital administrators, directors of nursing services and community leaders. Mrs. Lois Allen of Houston is president of the Association and in charge of plans for the conference.



NEW STAFF MEMBERS . . . Following the faculty conference held at the beginning of school, these new staff members gathered on the library steps for the above pose. They are L. to R. (First Row) Alvin Coleman, Marion Henry, James Lockett, Carrie Stokes, Norman Johnson, Terry Brooks, Bernard Anderson. (Second Row) James Smith, Willie Owens, Kenneth Hunt, Bertha Starks, Mary Dickey, Annie Alford, L. L. Byrd, (Top Row) Harriet Mitchell, Jewel Berry, Morgan Maxwell, Lucy Godspeed, H. Eunell Martin, Robert Jones, and James Randolph.