

Prairie View A&M University

Digital Commons @PVAMU

---

PV Panther Newspapers

Publications

---

2-23-1982

## Panther - February 1982 - Vol. LVI, NO. 12

Prairie View A&M University

Follow this and additional works at: <https://digitalcommons.pvamu.edu/pv-panther-newspapers>

---

### Recommended Citation

Prairie View A&M University. (1982). Panther - February 1982 - Vol. LVI, NO. 12., *Vol. LVI, NO. 12* Retrieved from <https://digitalcommons.pvamu.edu/pv-panther-newspapers/224>

This Book is brought to you for free and open access by the Publications at Digital Commons @PVAMU. It has been accepted for inclusion in PV Panther Newspapers by an authorized administrator of Digital Commons @PVAMU. For more information, please contact [hvkoshy@pvamu.edu](mailto:hvkoshy@pvamu.edu).



# The PANTHER

## PRAIRIE VIEW A&M UNIVERSITY

PRAIRIE VIEW, TEXAS

Volume 56  
Number 12

February 18-23,  
1982



### Vocal Star, Gil Scott-Heron in PV Concert February 27

On February 27th Renaissance Productions in conjunction with the Coalition of Student Organizations will present Gil Scott-Heron in the Baby Dome. Prairie View will be the only black College to host the artist during Black History Month.

The outspoken electricifying artist will narrate a documentary of Dr. Martin Luther King, Jr., in a tribute to Black History Month. The Documentary has never been shown on any other campus in Texas before. Gil Scott-Heron has been communicating his anger, compassion and thoughtfulness through his words. His album *Secrets* outsold all other Heron albums to date. Angel Dust made a significant impact on charts and minds. The anti-PCP Public Service Radio

Spot earned Heron a prestigious advertising award. His stance against nuclear energy culminated in thundering performance at Madison Square Garden's Muse Concert.

Heron does not see himself as a political artist but as an artist who is aware of the politics in the community and is not afraid to deal with them. His first novel, *The Vulture* was published when he was 19. Through his poetry and his music, Heron has become a major creative spokesman and contemporary interpreter of the wide range of black experience. Heron touched on clack frustration, political unrest and repression on such albums as *Pieces Of A Man*, *Free Will* and *Winter In America*. On other pieces like *The Revolu-*

### PV Students to Jump Rope For Heart Association Fund

Students at Prairie View A&M University will jump rope to raise funds for the American Heart Association in a Jump Rope for Heart scheduled for Saturday, February 27, 1982.

The three-hour event will feature students who will jump rope as members of six person teams. Each team member will jump until tiring and then pass the rope to another team member. The sequence is repeated for a maximum of three hours.

Prior to the event, each participant will collect pledges from family, friends, and neighbors on each minute their team jumps. Following the event, the student will return to sponsors with a verified report

and collect the pledges. These pledges will then be turned in to the Jump Rope for Heart coordinator and forwarded to the local American Heart Association.

All participants will receive a Certificate of Appreciation. Students who turn in their pledges on time will receive an official Jump Rope for Heart T-shirt. Each member of the team raising the most money, over \$200, at their school will receive a warm-up suit. And the individuals turning in \$100 or more and not members of the winning team will receive a windbreaker.

Each school participating also competes for statewide prizes. The top three elementary schools have a chance to win springboards, tumbling tables, vaulting horses, horizontal bars, tumbling mats, and other gymnastic equipment, based on the highest amount raised per student, according to the school's average daily enrollment.

A nine-station Universal gym unit will go to the junior See **HEART FUND**, Page 2

Coming to PV  
**RUBY DEE**  
and  
**DESSIE DAVIS**  
will perform at  
**PV A&M**  
in several theatrical  
appearances on  
**April 21, 1982**  
For Further Information  
Dr. Clarissa Booker  
857-2256

tion Will Not Be Televised and *H2O Gate Blues*, an explicit indictment of American crimes committed during Nixon's administration. Heron was unafraid to name names and call for action. Other songs from Heron's early period included *Lady Day* and *John Coltrane*, *Home Is Where The Hatred Is*, and *The Bottle*, which dealt with alcoholism and became his first chart hit.

To date, Gil Scott-Heron has recorded nine albums for Arista Records: *First Minute of The Day*, *From South Africa To South Carolina*, *It's Your World Bridges*, *Secrets*, *The Mind of Gil Scott-Heron*, 1980, *Real Eyes* and *Reflections*. His latest album *Reflections* interprets the Reagan See **VOCAL STARS**, Page 3



RELAXING — Outdoor recreation and just plain relaxing in the 80 degree sunshine is what these PV-ites are enjoying. Both seniors, they are Eartha Ross (top) of Houston and Janice Wilson, Milano, Texas.

### Alphas Are Big Winners At State Convention

The Eta Gamma Chapter of Alpha Phi Alpha Fraternity, Inc. recently traveled to San Antonio, Texas to participate in the Texas State Council of Alpha Chapters Annual Convention.

Eta Gamma represented Prairie View in first class fashion, winning first place in seven of nine categories. Among these were Chapter of the Year (1980-81), Scrapbook Competition, Stomp Competition, W.E.B. DuBois Award (highest chapter grade point average), and Most Registered Brothers.

Ronald Morgan, a senior mechanical engineering major and honor student, kept the winning trend of Eta Gamma going by winning the Henry Arthur Callis Award (brother

with highest G.P.A.), and Brother of the Year (1980-81).

Congratulations is extended to Autry Griggs, newly elected State Vice President and Perry L. Jordan, III, newly elected Chaplin for 1982.

Eta Gamma will travel to Oklahoma City, Oklahoma in mid-April to compete in the Alpha Phi Alpha Regional Convention. Good Luck Eta Gamma!

### How Cuts in Student Aid Will Affect Prairie View

Several National Associations in the field of higher education are calling on college students, staff members and alumni to join together in preventing the complete erosion of support for needy students across the country.

According to studies by the nation's associations for higher education, the proposed cuts by the Reagan Administration will have a drastic effect on all colleges and universities and particularly a See **STUDENT AID**, Page 4

### Book Exhibit to Feature Works of Black Authors

A Black History month book exhibit featuring the works of Black authors will be held on Wednesday, February 24 from 1:00 to 4:00 p.m. in the lobby of Memorial Student Center.

Sponsored in connection with the university's observance of Black History Month, the exhibit is a project of the Century Two Book Review Committee.

### New Football Coach Likes Challenge

Prairie View A&M University has named Jim McKinley, 37-year-old with a winning tradition, as head football coach for the Panther 1982 season, University President A. I. Thomas has announced.

He replaces Cornelius Cooper whose two-year record stands at 4-16.

Coach McKinley announced that he is keeping assistants Johnny Williams and Conway Haymna from Cooper's staff, and will hire four more assistants, probably by early summer.

"I am extremely proud that Prairie View A&M put their faith in me to get the Panthers back on the winning track again, and very excited about coming into a premier conference such as SWAC (Southwestern Athletic Conference), Coach McKinley

says. "Every head coaching job I have taken followed losing seasons, and I feed on the challenge I was offered. It's the same at Prairie View, and I'm looking forward to it."

Named head coach at North Carolina A&T in Greensboro, N.C. in the Mid-Eastern Athletic Conference in 1977, Coach McKinley took his team to the Gold Bowl only one short year later, and returned as Gold Bowl Champions in 1980.

He began his coaching career at the tender age of 21 at Allegan High School in Michigan as assistant coach, then named head coach the following year and won four straight championships.

After serving as an assistant at Eastern Michigan University 1972-73, Coach McKinley took his first university head

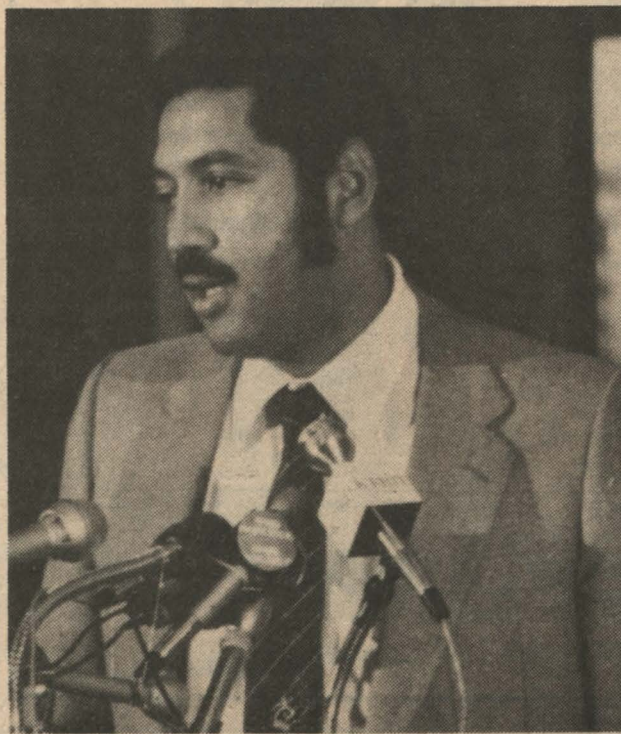
coaching position at Central State University in Wilberforce, Ohio, and in his three-year tenure there gave the university it's first winning season in 15 years, and took them to their only bowl game ever.

Then in 1977, Coach McKinley moved his winning traditions to North Carolina A&T, and has kept his portfolio intact. He brings See **COACH**, Page 8

Coach Jim McKinley Meets The Press In Houston

Talks With Faculty and Team Members

Starts Recruiting For Fall 1982



### Real Estate Scholarship Awarded to Traci Gamble

Miss Traci Gamble, an accounting major, was the recipient of TREC (Texas Real Estate Commission) Scholarship. The TREC scholarship is administered through the admission headquarters at Texas A&M University and is awarded annually to an outstanding student in the state who shows potential as a future leader in Real Estate.



Tracie Gamble

To date, TREC has awarded approximately 82 scholarships since its inception in 1978. Miss Gamble is the first black female first Prairie View student to have received such an award.

of 1980 under the persuasion of her aunt, Dr. Clarissa Booker to enroll after graduation from Las Vegas High School in Las Vegas, Nevada. While at Prairie View, she is an honor student and participates in numerous campus organizations. She is

### Free Tax Return Service Offered by Accounting Club

Starting on February 1, 1982 through April 14, 1982, the Accounting Club will be doing free 1981 Income Tax Returns for the community. We are asking all those who would like for us to do their returns to turn their information in to the College of Business. Please make sure to include your telephone number in the information packet so that you can be notified when your return is completed.

All students interested in

an active member of the Accounting Club and Photo-Play Club. You will see Traci's familiar face on Wednesdays and Sundays as she is the directing force of our campus cinema. Traci has as her motto, "The sky is the limit!" Congratulations Traci!!!



A Lot of Nostalgia for PV-ite from Birth . . .

### Historic PV Hospital Going Down

By Jack Weeks  
You've heard the old cliché, "like father like son."

Well, have you heard "like father, like son, like mother, like brother, like sister, like uncle, like aunt, like cousins . . .?"

Curtis Henry Thomas, 35-year-old chief engineer of the power plant at Prairie View A&M University, is one of about a dozen immediate family members who have graduated from the storied university on the hill, beginning in 1940 and through 1981.

And he replaced none other than his father, Q.D. Thomas, when the latter retired in 1979, after 39 years at PVU as chief engineer.

"My father was responsible for a lot of firsts!" says the younger Thomas. "He helped build the original girls' gym with movie cameras, Black-shear Stadium, and was responsible for the broadcast of an out-of-town football game!"

"I remember eating snow cones made at the old power

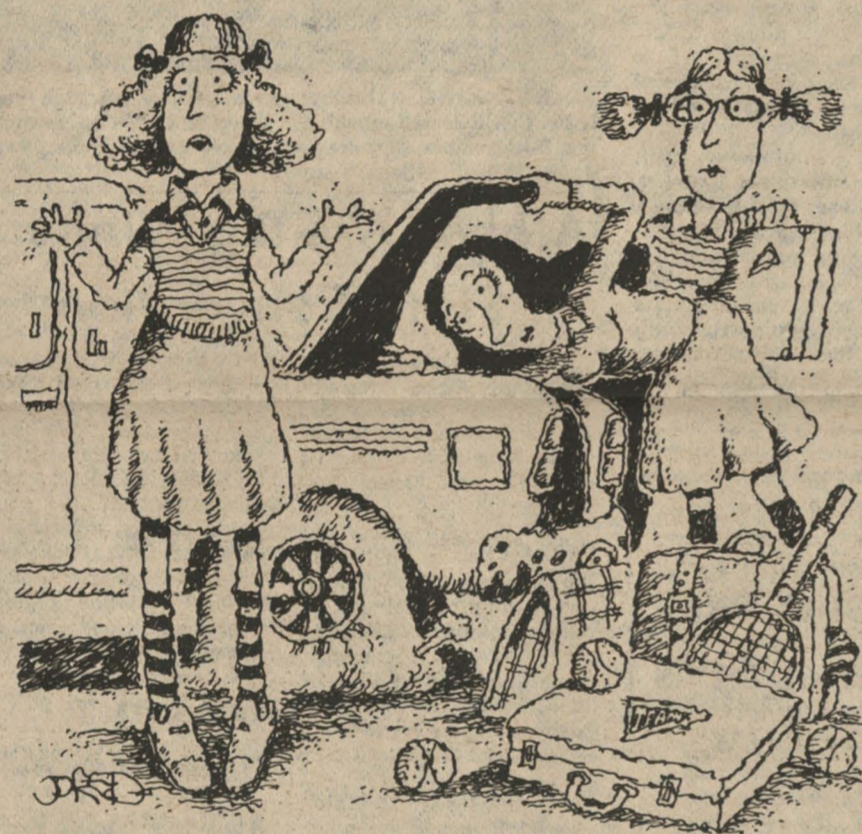
plant when Prairie View generated its own power with the old reciprocating compressor that sounded like the 'chug-chug' of a train." He has seen many changes at the university, and sometimes has mixed emotions about razing old buildings to make a place for more modern structures.

"I was born at the old hospital that opened in 1927, and like everybody, I had a soft spot for my birthplace," Thomas remembered. "But, like a number of others in recent years, it was no match

for the giant wrecking ball just a couple of weeks ago. I watched it hit the room where I was born, and couldn't stand it for long."

He said he has always enjoyed working with his hands, and watching mechanical systems operate, kind of like "playing with a giant erector set." It follows that his hobby is restoring old, classic automobiles, and has hundreds to his credit.

He has two school age children, Allyn, and Curtis Wendell. His wife is named Diane.



"Spare... what spare?"

### There's a better way to get there this Spring.

Greyhound is going your way with trouble-free, economical service. You can leave directly from campus or other nearby locations. Most schedules have stops at convenient suburban locations. And talk about comfort. You get a soft, reclining seat and plenty of room for carry-on bags.

So next trip, go with the ride you can rely on. Go Greyhound.

Friday	Prairie View	Lv	1:32p	5:05p
	Bryan	Ar	2:50p	
	Waco	Ar	5:00p	
	Dallas	Ar	7:35p	
Sunday	Houston NW	Ar		5:50p
	Houston GH Terminal	Ar		6:10p
	Dallas	Lv	1:35p	
	Waco	Lv	4:20p	
Monday	Bryan	Lv	6:30p	
	Houston GH Terminal	Lv		5:30p
	Houston NW	Lv		5:50p
	Prairie View	Ar	7:48p	6:40p

Schedules operate every weekend except during holidays, exam week and semester break. Prices and schedules subject to change. Some service requires reservations. For convenient daily service and complete information call 857-3509.



And leave the driving to us.

©1981 Greyhound Lines, Inc.

working on these returns are asked to contact Valerie Johnson, Dwayne Grismore or Mark Hayes.

### Drama Department Schedules "Cotton Club Revue"

The Division of Drama and the Charles Gilpin Players will present "Cotton Club Revue," directed by Mr. C. Lee Turner. A dynamic musical depicting the gala's of the 1930's will be the mode of entertainment for the evenings of February 23-27.

The show will be sponsored by various organizations on campus in an effort to unite the staff, faculty and student body.

February 23 — STAFF AND FACULTY NITE at THE COTTON CLUB. Sponsored by the Grad Chapter of Delta Sigma Theta Sorority, the Brothers of Phi Beta Sigma, and the PMS and Staff of Army ROTC.

February 24 — HOLLEY HALL NITE at THE COTTON CLUB. Sponsored by the Senior Fellow, Mr. Phelps and the men of Holley Hall.

February 25 — ARMY ROTC NITE at THE COTTON CLUB. Sponsored by Capt. Dabney and the outstanding Juniors and Seniors of Army ROTC.

February 26 — ALPHA PHI ALPHA NITE at THE COTTON CLUB. Sponsored by the Brothers of Alpha Phi Alpha Fraternity of PVU.

February 27 — ATHLETES AND ALL OF ALEXANDER HALL NITE at THE COTTON CLUB. Sponsored by Senior Fellow, Mr. Ellery Stevenson, Alexander Hall and its occupants.

The show will begin with a social hour, 7:00-8:00 p.m., February 23-26. A special Late Nite Entertainment show will run Saturday, February 27, beginning at 10:00 p.m.

So, for a full week of entertainment and fabulous displaying of talent thru song, words, and movement we will see YOU at the COTTON CLUB REVUE.

Refreshments will be sold. Tickets are \$1.50 per student, \$3.00 per adult and \$5.00 per adult couple. For any additional information please contact the Drama department or Yolanda Harrell at 857-2356.

### Texas Commerce Bank to Present Banking Seminar

Texas Commerce Bank will present a "Careers In Banking" seminar at Prairie View A&M University from 10 a.m. to 12:30 p.m. on March 23.

Led by Michael C. Baker, manager of Trust Financial Planning Division, a team of five officers from various divisions of the bank will speak before undergraduates and faculty of the university.

Other seminar members include E. P. Rundle, professional staff recruiter and Human Resources Officer; John McKemie, vice president, manager of Business Services Division; Pamela Davis, vice president, International Banking Officer, and Mike Baker, senior vice president, trust officer and manager, Trust Financial Planning Division.

The seminar will consist of five parts, closing with a question and answer program.

Introduction will cover Organizational Structure of Texas Commerce Bank, and career possibilities in major banking areas, such as banking, trust, operations and Finance and administration departments.

Minorities in banking and Texas Commerce Bank officer training programs will be discussed in Part III, titled "Professional Employment."

Prior to the question and answer session, the professional employment qualifications will be discussed.

### Vocal Stars —

CONTINUED from Page 1

Administration and the economic problems facing the world. One cut on Inner City Blues reflects the frustration of the black man within the city.

FEATURING "JORDACHE'S" for women under \$40.00

CHARLIE JENE'S

LATEST FASHIONS FOR TODAY'S WOMAN  
Hwy. 290 in Waller 372-2437



ALEXANDER'S GULF STATION

24-HOUR WRECKER SERVICE

Telephone: (713) 372-9613 or (713) 372-2119  
Waller, Texas 77484

### Dr. Wyatt Performs at Nat'l Music Convention

Dr. Lucius R. Wyatt, an Associate Professor of Music, recently performed on trumpet with the Texas Trumpet Ensemble at the National Meeting of the Music Educators National Conference and the Texas Music Educators Association in San Antonio. The trumpet ensemble consisted of 25 trumpet teachers in the colleges and universities in Texas. Some of the universities represented were North Texas State University, The University of Texas at Austin, Baylor University, Texas Tech University, West Texas State University, and Prairie View A&M University. The concert was attended by music teachers from cities across the U. S. as well as those from Texas.



DUPONT GRANT — Edward W. Johnson (right) representing E. I. DuPont Nemours and Company presents a \$20,000 check for Engineering grant to President A. I. Thomas (left) and Engineering Dean A. E. Greaux.

# Who will be first with the electronics of the future?

It could be you and Hughes.

And that's no idle statement. Because the string of Hughes firsts is legendary, from firsts in submicroelectronics to firsts that span interplanetary distances.

And you'll find Hughes a perfect career choice at almost every level of expertise. You'll find a wide variety of locations spanning Southern California and Tucson, with environments to accommodate every lifestyle. You'll have all the advantages of a major, internationally recognized company, coupled with the personal responsibility and visibility possible in Hughes' smaller decentralized groups.

But most of all, you'll be part of a

company that puts you at the threshold of virtually every state-of-the-art technology — on the ground, on the seas, in the air, in deep space.

Who will be first with the electronics of the future?

With 1,500 projects, a \$6 billion backlog and opportunities like these, it could be you and Hughes.

At Hughes Aircraft, we'll introduce you to people, ideas and jobs that could change your world. And maybe ours.

Our current opportunities are for graduates in:

- Electrical Engineering
- Physics
- Computer Science

We also have some opportunities in:

- Mechanical Engineering
- Manufacturing/Industrial Engineering
- Material & Processes
- Mathematics
- Aeronautical Engineering

The following Hughes groups will be on campus:

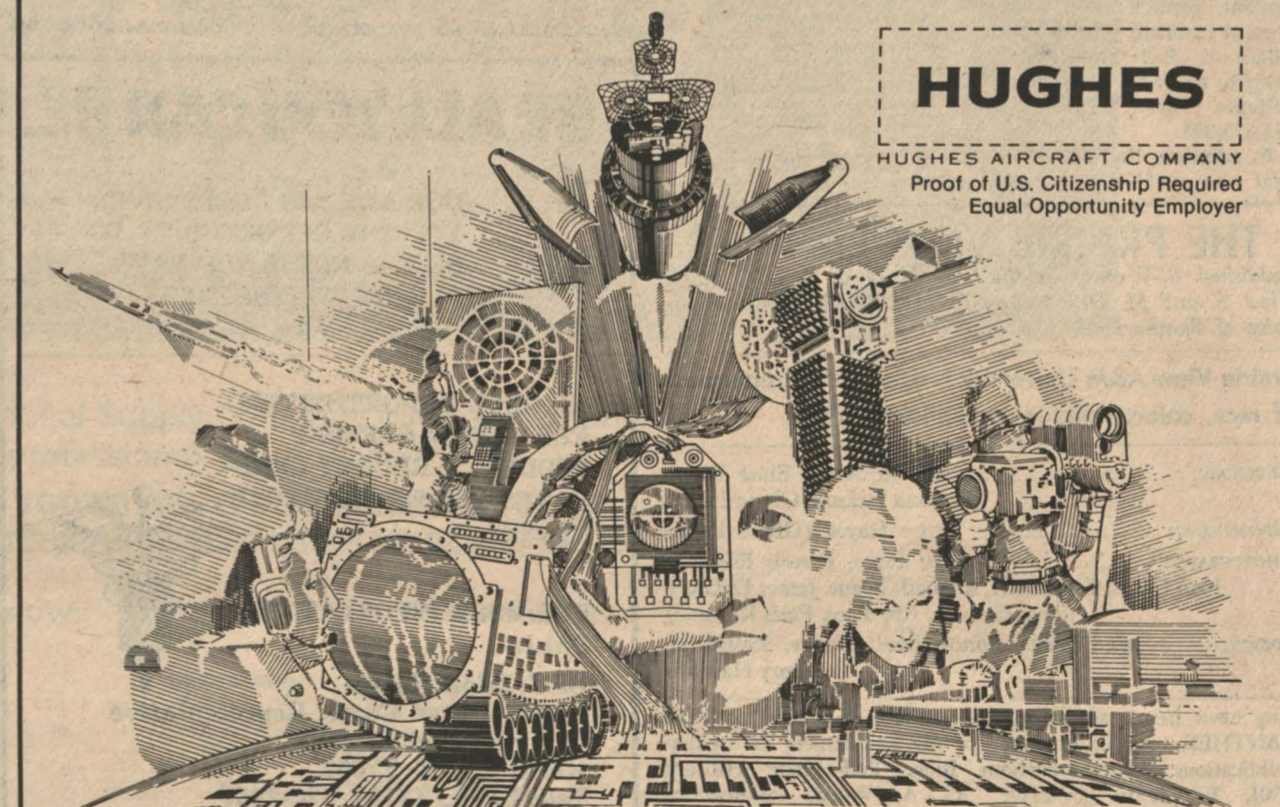
February 26

(see your placement office for an appointment)

MISSILE SYSTEMS  
RADAR SYSTEMS  
MISSILE DEVELOPMENT  
DIVISION — TUCSON

## HUGHES

HUGHES AIRCRAFT COMPANY  
Proof of U.S. Citizenship Required  
Equal Opportunity Employer



Hughes College Relations Office, P.O. Box 90515, 100/445, Dept. NC, Los Angeles, CA 90009

### Financial Aid to Needy College Student Spells Equal Opportunities

Students and their parents are keeping a watchful eye these days on the proposed federal budget cuts in education. For those who need financial aid to attend college, the new isn't good.

If reports are accurate, President Reagan's fiscal 1983 budget, which is due to be released early in February, will request a 46-percent reduction in need-based aid from levels set in the fiscal 1982 continuing resolution, a stop-gap measure enacted by Congress to keep the government in business until March 31. Cutbacks in Pell Grants, U. S. aid targeted to neediest students, would bar from eligibility more than one-million students. Other proposed reduction would eliminate another 1.3 million students from three additional programs.

The impact of such cuts would be devastating to students and their families, and to the colleges and universities they would have attended. We say "would have attended" because the cuts may mean that huge numbers of students may be unable to attend college at all. Other will have to attend lower cost or local institutions whether or not these schools meet their academic needs.

What does this mean for students at local colleges and universities? (Add information about student aid impact at one or more local colleges and universities. Also include information about how the cutbacks would affect the institutions).

Generally, all of the cutbacks mean that the administration is scuttling our quarter-century national commitment, shared by Republicans and Democrats, to ensure equal opportunity in higher education.

Higher education deserves our support as we all tighten our belts. Let's make certain that the funding cutbacks in the student aid programs don't go beyond the "fair share" that higher education should contribute to this country's economic recovery.

Let's remember what our colleges and universities do for our country. They provide for thoughtful, productive citizens as well as technological discoveries that make our lives better — and help us compete in the world market. We urge the Reagan administration to re-think its priorities before it rejects this country's historic commitment to higher education.

### Student Aid Cuts —

CONTINUED from Page 1

special impact on historically black colleges.

Data compiled by the Division of Program Operations of the Department of Education indicate that Pell Brant awards to all institutions in 1981-82 was a total of \$126,125,542, on 17 percent below the 1980-81 total.

Observers report that the currently proposed cuts for the 1982-83 period will likely fall somewhere between 20 percent and 30 percent of the 1981-82 figure. However, it has been rumored that those cuts may be as much as 40 percent. A 40 percent reduction of the present funding level would reduce the Pell Grant funds going to the historically black colleges next year to \$75,675,325.

In addition, the data show that the total number of

students in the historically black colleges receiving Pell grants fell from 127,905 to 87,172, or by 40,733 between 1980-81 and 1981-82. A 40 percent reduction in Pell grants would undoubtedly further reduce the number of student Pell grant recipients with a ripple impact on enrollment and the lives and well-being of a large number of persons.

#### IRS TAX TIPS On Accuracy

When filing your tax return you can help yourself to a faster refund and save time and effort by:

- Attaching your W-2s from all your employers; Attaching all supporting documents and schedules; Using the pre-addressed label and coded envelope (and if you pay a preparer have him or her use your label and envelope); Checking your math; Signing the return (you and your spouse must both sign if married and filing jointly).

A public service message from the Internal Revenue Service

### THE PRAIRIE VIEW PANTHER

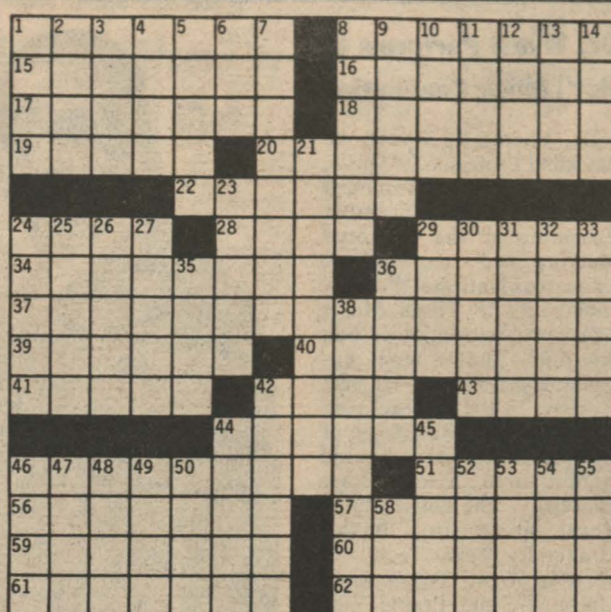
Published Bi-Weekly in the Interest of a Greater Prairie View A. and M. University. The PANTHER serves as the voice of Pantherland.

Prairie View A&M University is open to all, regardless of race, color, religion, or national origin.

- CLERICAL: Sharon Small, Elma Brown (Vanessa Jackson, Gloria Perez)
- ADVERTISING: Janice Hayes (Gloria Perez)
- PHOTOGRAPHY: Brett Horn, Dennis Edwards, Joan Chess, Kevin Hill, Kenneth Pogue, James DeLoach (Tom Godwin, Roy Pace, Paris Kincaide)
- SPORTS: David Wells, Editor; Paul Wesley, Statistician Henry Hawkins

Any news items, advertising, or matters of interest to THE PANTHER may be presented to the Department of Student Publications, Communications Bldg., 2nd Floor, Hilliard Hall, Telephone 857-2117. C. A. Wood, Publications Director.

CASS Student Advertising, Incorporated  
1633 West Central, Evanston, Illinois 60201



© Edward Julius Collegiate CW78-1

### collegiate crossword

BOX 316 NORTHRIDGE, CALIFORNIA 91328

- |                             |                          |                         |
|-----------------------------|--------------------------|-------------------------|
| <b>ACROSS</b>               | 51 Not suitable          | 23 Coach Hank           |
| 1 — of the law              | 56 Church attendees      | 24 Examines before      |
| 8 Easily bent               | 57 One of the con-       | robbing                 |
| 15 City near Los Angeles    | quistadors               | 25 Pirate's word        |
| 16 Capital of Burma         | 59 Drum sound            | 26 Car or horse         |
| 17 — bread                  | 60 Subject of Newton's   | 27 More to Nader's      |
| 18 Burning fragrance        | first law                | liking                  |
| 19 Film comedian            | 61 Attractive            | 29 Gap: Sp.             |
| Charlie                     | 62 Sink                  | 30 Literary twist       |
| 20 Relative of jeans        |                          | 31 Ora pro              |
| 22 Financial grace          | <b>DOWN</b>              | 32 Rub lightly in       |
| perfid                      | 1 Secular                | passing                 |
| 24 Large letters, for short | 2 Prefix at right        | 33 Spokesperson         |
| 28 Subject of Kilmer poem   | angles                   | 35 "Star"               |
| 29 Crosby and cherry        | 3 Sports organization    | 36 Kind of flu          |
| 34 Earhart, for one         | 4 Liquid measures        | 38 Fearless             |
| 36 City near Chicago        | {abbr.}                  | 42 "of Honey"           |
| 37 Pacific inlet            | 5 Parting word           | 44 "Go away!"           |
| (3 wds.)                    | 6 Narrow inlet           | 45 Aspects of           |
| 39 Regard highly            | 7 Type of orange         | clothing                |
| 40 Create a closed shop     | 8 Mark Twain character   | 46 Give a darn          |
| 41 Mythical carrier         | 9 Actress Hope           | 47 "An apple..."        |
| 42 Thin Man's pooch         | 10 Victim of 57-Across   | 48 Word in campaign     |
| 43 Belgian river            | 11 Ripening agent        | poster                  |
| 44 Ship parts               | 12 Study, with "up"      | 49 Parseghian, et al.   |
| 46 Procession               | 13 Emulate Charlie Brown | 50 Mother of Apollo     |
|                             | 14 Chemical endings      | 52 Certain fed          |
|                             | 21 Kind of absence       | 53 Comedian Johnson     |
|                             |                          | 54 School chief (abbr.) |
|                             |                          | 55 Frog                 |
|                             |                          | 58 Suffix for hero      |

### Timetable of Key Congressional Actions

February 8 — Fiscal Year 1983 budget transmitted to Congress  
★ District Work Period — House February 11-16, Senate February 12-22

February-March — Authorizing committees and Budget committees hold hearings on impact of budget recommendations, Appropriations committees consider Fiscal Year 1982 supplementals and rescissions

March 15 — Authorizing committees submit spending recommendations to Budget committees

Later March-April — House and Senate act on Fiscal Year 1982 rescission/supplemental bills (may be combined with extension of Continuing Resolution which expires March 31)

March 31 — Senate Budget committee reports plans for a balanced budget in Fiscal Year 1984

★ District Work Period — House April 7-10, Senate April 2-13

April 15 — Budget committees report final budget resolution for Fiscal Year 1982 and first budget resolution for Fiscal Year 1983

May 15 — House and Senate act on final budget resolution for Fiscal Year 1982 and first budget resolution for Fiscal Year 1983

Spring — Fiscal Year 1983 Appropriations committee hearings

May/June — House and Senate act on conference report on first budget resolution for Fiscal Year 1983

★ District Work Period — House May 28-June 1, Senate May 28-June 7

Summer — House and Senate act on Fiscal Year 1983 Appropriation bills

★ District Work Periods — House June 25-July 22, August 20-September 7; Senate July 2-12, August 20-September 8

September 15 — House and Senate complete action second budget resolution for Fiscal Year 1983

October 1 — Fiscal Year 1983 begins

October 8 — Adjournment target

★ Congress not in session; most Senators and Representatives will be in their home states and districts. A good time for personal contacts.

Contact Your Congressman, Now  
Help Save Student Financial Aid

#### Accounting Club Praises Members

The Accounting Club would like to extend a special congratulation to the following Accounting Majors for making Who's Who Among Student in American Colleges and Universities: Dwayne Grismore, Waverly Nolley, Viron Reed, Dianne Arceneaux, Karen Winn, and Sylvia Thomas. We the Accounting Club would like to say to these students that we are very proud of you. Congratulations!

### PRESCRIPTIONS - DRUGS

Where You Get More Than Just  
A Welcome and Good Service

### CITY DRUG-HEMPSTEAD

826-2496 W. W. Wilkes, Owner

### YE OLDE WEST BARGAIN HOUSE

Full Line of  
WESTERN WEAR

James C. Lloyd, Owner

2430 Main 713-372-9300

Waller, Texas 77484

### BE ALL YOU CAN BE.

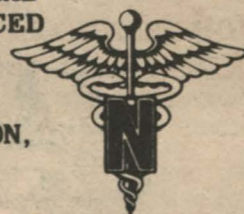
**S N** OUR ALL BSN CORPS GIVES YOU THE OPPORTUNITY TO BE THE NURSE YOU HAVE ALWAYS WANTED TO BE.

WE HAVE OPPORTUNITIES FOR SENIOR NURSING STUDENTS, RECENT GRADUATES AND EXPERIENCED NURSES.

FOR MORE INFORMATION, CALL:

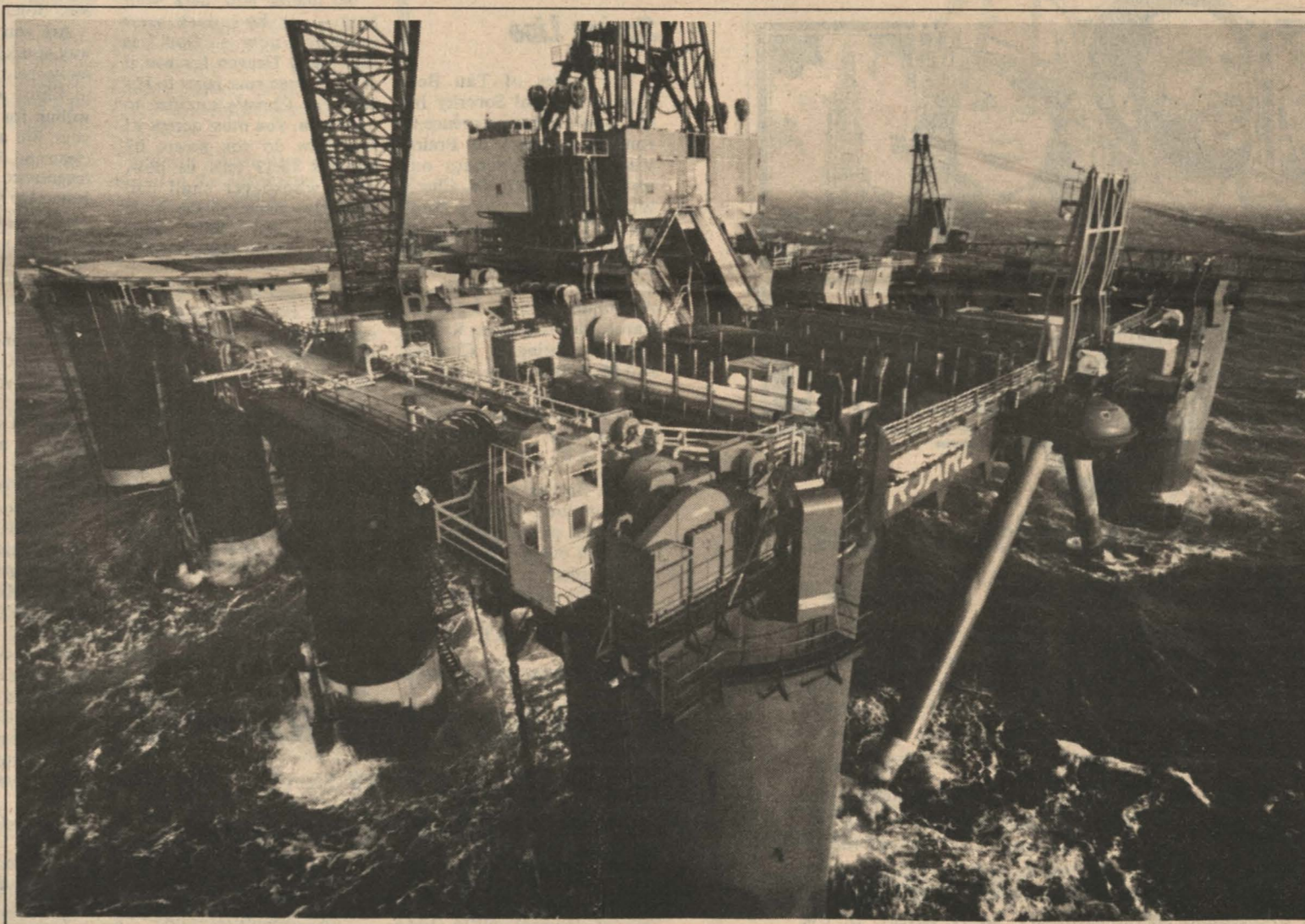
SFC Eddie Lewis  
Army Nurse Corps Representative  
701 San Jacinto  
Houston, TX 77052  
Telephone: (713) 226-2264

ARMY NURSE CORPS.  
BE ALL YOU CAN BE.



# In the oilfields, worldwide, NATIONAL is the leader.

We'll challenge you to become a leader, too.



National Supply Company offers opportunities for professional and personal growth.

**YOU'RE INVITED TO ARRANGE FOR AN INTERVIEW WITH US ON MARCH 3, 1982.**

Worldwide headquarters, Houston, Texas.



An equal opportunity employer M/F

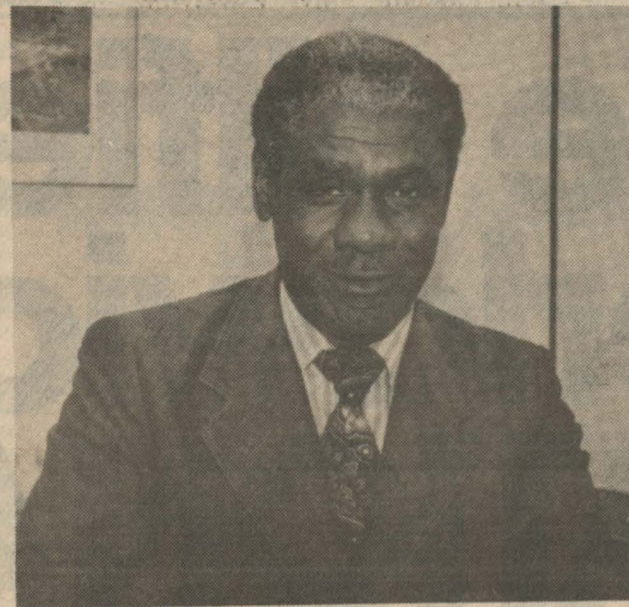
**The Bahamian Association**

The Bahamian Association held their annual election on February 7, 1982. The meeting was chaired by the past president G. Turnquest and vice president Chrispin Ferguson. The ballots were marked for the office of president, vice president and parliamentarian. Carlton Robinson won over Theresa Kemp for the office of presidency, Gary Thompson won over Trevor Turnquest for the vice president and M. Nembland won over Wayne Turnquest.

The other positions were filled by nominees who had no opponents. Mary Ann Higgs was nominated secretary, Lolita Wilkenson treasurer, Steven Thompson chaplain and Doris Rolle corresponding secretary.

Meetings will be held every first and third Sunday in each month. Graduate members have special invitations to attend, you will be gladly and warmly welcomed.

Doris Rolle



The Reverend D. Leon Everett, II, served as guest speaker at Prairie View A&M University on Sunday, February 21, 1982 at the 11:00 a.m. hour in observance of Black History Month. Reverend Everett served as member of the Houston Independent School District Board of Education and was the first black to serve as president of that board. He is pastor of Jerusalem Baptist Church, Houston, Texas and is very active in the community in that city.

**Kollar Korner**

God Has Forgiveness And Heaven For You. Yes, You! If you will take five minutes to read this message, you can know how to find forgiveness of your sins.

By E. J. Johnson, Baptist Student Movement



Christ Jesus, the son of God, having no sins of His own, went on purpose to the Cross and died for our sins. He was buried and He arose from the dead for our salvation. "All we like sheep have gone astray; we have turned everyone to his own way, and the Lord has laid on him — Jesus — the sins of us all!" Isaiah 53:6. Paul speaks of Jesus in Col. 1:14, "In whom we have redemption through his blood, even the forgiveness of sins."

It is because Jesus has suffered and bled and died and risen for our sins that God the Father can justly forgive our sins when humbly we trust His dear Son and invite that Son into our hearts as Savior. "For God so loved the world that He gave his only begotten Son that whosoever believes — trusts — in him shall receive forgiveness of sins!" Acts 10:43. And Jesus said, "I am the way, the truth, and the life: no comes to the Father but by Me!" John 14:6.

Are you willing — the best way you know how — to turn away from your sins and turn to Christ as Savior? Are you willing for Him to come into your life and help you to be clean and do right? This shows repentance. This is believing in Jesus. Do you really want His pardon? Then do as the Bible tells you! Call upon Jesus! Ask Him to please come into your poor, sinful heart, please forgive your sins, and be your savior. If you will call upon Him — and really mean it — you have God's Word that you will be saved!

Right decisions are a result of long experience and long experience is a result of long inexperience.

**IRS TAX TIP**  
For Single Taxpayers

If you maintained a home for a parent, child, or other relative, you may be able to file as Head of Household and pay less than filing as a single taxpayer.

A public service message from the Internal Revenue Service

**Tau Beta Epsilon Introduces Spring Line**

The ladies of Tau Beta Epsilon Cultural Sorority Inc. would like to introduce to you, the students of Prairie View A&M University our spring line of 1982: Ms. Cheryl Wickliff, senior, from Houston, Texas majoring in Elementary Education, GPA is 2.5. Ms. Paula Waters, from Palestine, Texas, majoring in Accounting, G.P.A. 3.35; Ms. Karen Mouton from Killen, Texas, majoring in Clothing and Merchandising, G.P.A. 3.11; Ms. Cynthia Tolbert from Killen, Texas, majoring in Applied Mathematics, G.P.A. 3.70.

The Sorors of Tau Beta Epsilon look forward to a successful pledge period. We also wish our pledges and all other pledges good luck during the pledge period.

T.B.E. - Sorors

**WARD'S PHARMACY**

"Your Rexall Store"

SENIOR CITIZEN DISCOUNT  
AVAILABLE ON PRESCRIPTIONS

Telephone 826-2445 Nights 826-6920  
Hempstead, Texas

**PEOPLES CLEANERS**

DRY CLEANING, ALTERATIONS, LAUNDRY  
SERVICE AND LEATHER CLEANING

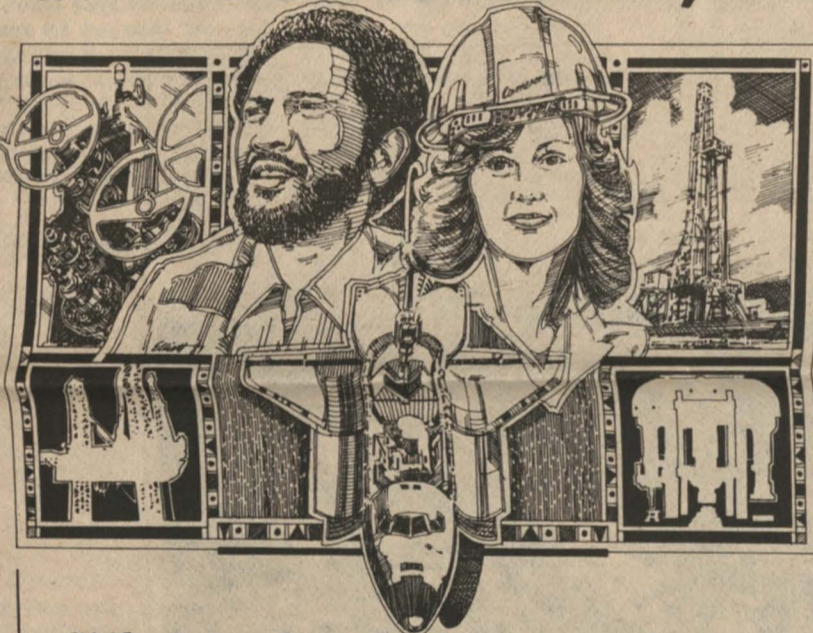
826-3847 — Day or Night

P. O. Box 136

Hempstead, Texas

1 - 2 HOUR CLEANING SERVICE

**CAMERON IRON WORKS, INC:**



**Where the Promise of the Past becomes the Future -**

Your formal education is almost finished, and the future holds a lot of promise. To make that promise a reality, you need a company with the experience, diversity and growth potential to help you meet your professional goals. And this is why Cameron Iron Works is the company selected by so many graduates.

Cameron Iron Works started in 1920, manufacturing steel blow-out preventers for use in the oilfields. Today, Cameron supports a work force of over 11,000 people, who design, manufacture and market oil tools, ball valves and forged products for domestic and international clients. With 61 years of experience in the oilfield service industry, we're aware of the constant need for fresh ideas and new talent, and so we make every effort to recruit talented graduates interested in technical opportunities.

To turn the promise of your education into a future career, schedule now with your Placement office for the disciplines and time listed below:

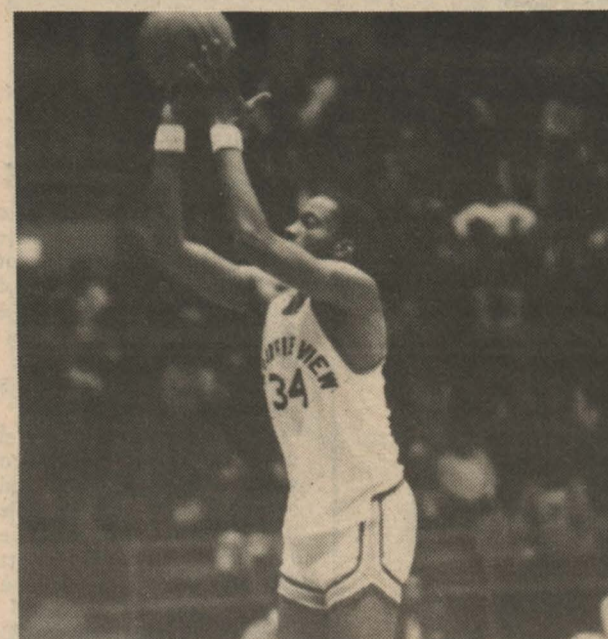
Prairie View A&M - February 22, 1982  
ME



CAMERON IRON WORKS, INC.  
P. O. Box 1212 · Houston, Texas 77001  
We Are An Equal Opportunity Employer M/F

**SPORTS**

**Miller times** starring Miller High Life



PANTHERS CLOSE HOME BASKETBALL SEASON.

**Six Panthers Win Trophies At Houston Baptist Relays**

Six athletes for Prairie View won first place trophies in the HBU Invitational Relays Saturday.

Placing first were Carl Garcia in the high jump, with a jump of 7-0 which ties a school record. Mel Trahan brought in another first place trophy in the 1,000 meters.

Prairie View took the number one spot in the 400 meter relay with the team of Melvin Polk, Cornelius Turner, Reginald Jones, and Hernandez Miller with a time of 42.5.

In the sprint medley relay the Panthers won second with Reginald Jones, Cornelius Turner, Mel Trahan, and Eric Pierce. Also finishing second was the 800 meter relay team with a time of 1:27.3. Running

for Prairie View were Terry Graham, Jones, Polk and Turner.

The Panthers added another second place to their list in the mile relay, with Kenneth Carter, Turner, Graham, and Eric Peirce finishing in a time of 3:18.9.

Kenneth Carter also placed second in the 300 meters.

Keith King, SWAC champion in the shot put, placed second with a throw of 50-10½ feet. Graham placed third in the 300 meters with Delton Rogers finishing fourth and Polk fifth.

Randy Randle placed fourth in the long jump. William Dixon placed fourth and Edwin Williams placed fifth in the high jump.

**Baseball Team Wins Double Header**

By David Wells

Prairie View's baseball team opened the 1982-83 season sweeping a double header over Huston-Tillotson in Austin. They won the first game 5-3 and the second 11-9.

Pitcher Fred Brown collected his first win of the season and freshman Gomez got the save.

In the first inning Herbert Henderson, Malvin Hodge and Leo Denman scored for the Panthers giving them a 3-0 lead.

Reggie Hill and Phillip William scored the final runs for Prairie View making the score 5-3.

The second game each team played scoreless through three innings.

The Panthers broke the tie in the fifth when Thomas Battle scored and shortstop Hill scored twice.

The Rams raced to a 8-3 lead in the sixth.

The Panthers bounced back

See **BASEBALL**, Page 4-A



MEET THE NEW COACH — Dr. A. D. Stewart, Math Department Head, left; Coach Jim McKinley, center and Dr. Leroy Moore, Athletic Director and Head of Physical Education Department visit.

"Gee, it must be great to be in a fraternity."



# SWAC Football Attendance Figures Among Highest

By Collie J. Nicholson  
The ever-increasing interest in Southwestern Athletic Conference football is graphically reflected in attendance figures released by the NCAA for the 1981 season. The SWAC led all Division I-AA conferences and independents with 662,221 specta-

tors for 36 games, an average of 18,921 per game, up 17.63 percent over 1980. Grambling led all SWAC schools with 185,008 in six games for an average of 30,835 up 2,937. Jackson State was second with 171,949 for six games. Southern drew 118,048, averaging 23,610 for

five games, down 6,098. Conference schools drew 50,000 more spectators in '81, despite playing three fewer games. According to the NCAA, only the Big Ten, Southeastern, Big Eight, Pacific 10, Southwest, Atlantic Coast and Western Athletic Conferences

outranked SWAC schools in attendance. Overall, 50 Division I-AA schools drew 2,950,156 fans for 274 games, an average of 10,927 per-game. Division I-A attendance was 26,588,688 for 771 games. College football reached an all-time national high, the NCAA said, with 35,807,040 spectators for 648 four-year colleges in the U. S. with varsity teams. Jackson and Alcorn State had the biggest per-game increases in attendance among seven SWAC members. Jackson was up 11,812 fans per-game to 28,658. Alcorn

# TWO HEAVY HITTERS TOUCH BASES ON BATS, BALLS, AND BEER.

**BOOG POWELL** (Former American Baseball Great): Koichi here has been giving me a new angle on baseball. It seems the game's a little different in Japan.  
**KOICHI NUMAZAWA** (Former Japanese Baseball Great): そう、例えばフィールドが小さめですな。  
**BOOG:** That's right. The field is

smaller over there.  
**KOICHI:** つまり、ショートで小さめな日本人の体格に合わせたんですよ。  
**BOOG:** Well, now that you mentioned it, I guess you guys are kinda smaller. Does that mean you drink Lite Beer 'cause it's less filling?  
**KOICHI:** いやー、おいしいから飲むんですよ。

**BOOG:** Tastes great? That's why I drink it, too! I guess we have a lot more in common than I thought.  
**KOICHI:** その通り! どうです、日本の野球チームに入りませんか。  
**BOOG:** Me? I'm too big to play on a Japanese team.  
**KOICHI:** そんなことないですよ、ショートに最適ですよ。  
**BOOG:** Shortstop?! Very funny.



LITE BEER FROM MILLER.  
EVERYTHING YOU ALWAYS WANTED  
IN A BEER. AND LESS.

©1981 Beer Brewed by Miller Brewing Co., Milwaukee, Wis.

## Panther Gagers Fought Gallantly In Closing Tilt

### Southern Wins 66-64

Arnold Scott led Southern to a 66-64 victory over Prairie View in the last home game of the season before a crowd of 5,000 in the Little Dome on the Prairie View campus Wednesday night.

Scott led the Jaguars with 18 points and had two assists. The Panthers fought up and down the court closing to within three points on several occasions but were never able to overtake Southern. The Jaguars dominated the first half and went in with a 33-30 advantage.

Melvin Wilkins contributed 16 points along with 10 by Anthony Bryant.

Gary Lockhart was high point man for the Panthers with 19 points. Gregory Daniels and Kenneth Ervin also hit in double figures, Erving hitting 12 and Daniels 11.

Prairie View is not 2-20 on the season and 1-10 in conference play while Southern is 5-15 on the year and 3-9 in loop play.

The Panthers play at Texas Southern Monday night and close the regular season at Huston-Tillotson in Austin Thursday night.

## PV Women Lose to Houston-Tillotson

Huston-Tillotson dropped Prairie View, 78-72 in women's basketball in the Little Dome on the Prairie View campus.

Jo An LeFridge led the Lady Rams with 18 points, four assists and two steals.

The Pantherettes took an early lead in the opening minutes of the first half, holding an eight point lead at one time in the opening 20 minutes.

Huston-Tillotson came back to overtake the Pantherettes to take a 31-24 halftime lead and never trailed in the second half.

Two other Lady Rams hit in double figures, Karen Templeton with 11 points and Cynthia Barefield with 10 points.

Prairie View was led by Betty Taylor and Ruth Griffin who both hit 19 points. Laureen Crenshaw also hit 15 and Doris Graham added 10.

had 6,921 more spectators per-game over '80, jumping to 15,546 for 1981.

The combined attendance for the four historical black conferences for 1981 was 1,538,294, NCAA figures revealed.

Mid-Eastern Athletic Conference schools lured 357,982 fans through the turnstiles, followed by the Southern Intercollegiate Athletic Conference with 309,330 and the Central Intercollegiate Athletic Association with 307,761.

Tennessee State was the top black independent with 83,978 in total attendance for five games.

Pro golfers spend about \$30,000 a year for road expenses.

## Pantherettes Finish Third At SWAC Meet

Memphis junior Karen Waddell won the Southwestern Athletic Conference shot put title for the third straight time and Dallas sophomore Keith King won his second straight title at the recent league indoor track and field championship in Jackson, Ms.

Waddell set a new record with her throw of 48-1 while King had a five-inch advantage on the second place finisher with a throw of 51-9.

Team wise coach Barbara Jacket's Pantherettes finished third in the meet with 71 points behind Texas Southern and Jackson State while coach Hoover Wright's Panthers were fifth behind Jackson, Texas Southern, Southern and Mississippi Valley.

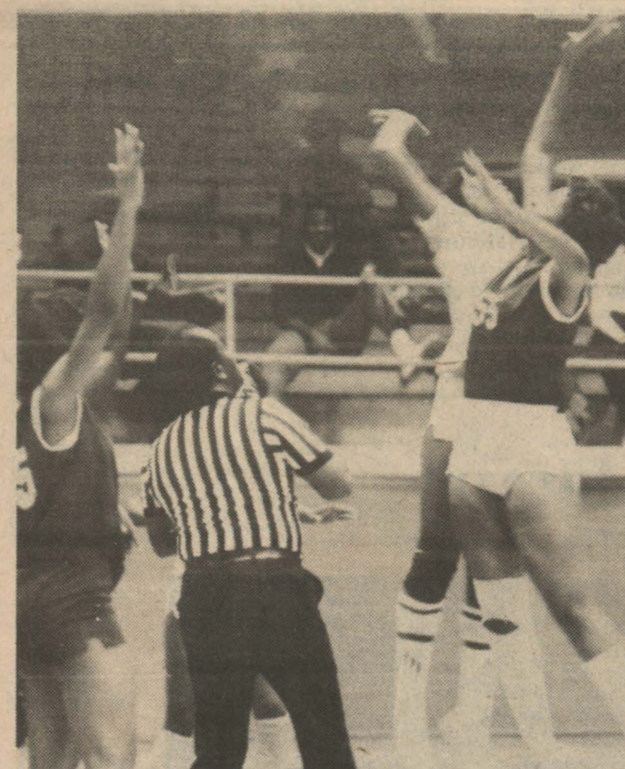
First place finishers in the conference meet were Mel Trahan in the 800 meter run in a time of 1:54.59 and Robert Thomas in the 50 meter high hurdles in a time of 6.73.

The women's team won both relays with Sheila LaBome, Cynthia Bosie, Loretta Edwards and Easter Gabriel winning the 1600 meter relay in 3:48.0 and LaBome, Cassandra Graham, Gabriel and Edwards winning the 4-lap relay in 1:05.3.

Trahan also picked up a second place medal in the 1000 meter run in 2:29.6. LaBome also added two second place medals in the 50 meter dash in 6.42 and the 400 meter dash in 57.54.

Other second place finishers were Patricia Thomas in the shot put with a toss of 45-0; Gabriel in the 600 meter run in 1:35.5. Second place finishers in the men's division were Derrick King in the 50 meter hurdles in a time of 6.82 and Eric Pierce in the 600 meter run.

Bosie tied for third in the 600 meter run in the women's division in a time of 1:36.99.



WOMEN'S BASKETBALL — Scene from last Pantherette victory when they defeated Texas College 81-61 on the home court.

## A Sense of Fair Play

By Matthew A. Castille

If there is one thing that humans admire, it is a sense of fair play. Any group can and will tolerate the most rigid type of discipline as long as there is assurance that all will be treated the same without exception. In fact, discipline is the one element that instills

stability in all of us. Hence, Lord, whatever actions that I may take, please endow me with a sense of fair play, Amen.

Louis Powell of Hurst grew a mustache that measured 17 inches from tip to tip.

**SPECIALIST IN RURAL ELECTRIFICATION**

**SAN BERNARD ELECTRIC COOPERATIVE, INC.**

P. O. Box 158 Bellville, Texas 77418  
Phone 713/865-3172

Carpet Vinyl Carpet Shampooing

**ELMER Floor Covering**

Monday-Friday — 8:30-5:00  
Saturday — 8:30-12:00

Elmer Gain 372-2415



NEW COACH-NEW SPIRIT — Coach Jim McKinley rounds up Panthers and gets hopes high while planning to turn things around in PV football.

## Kappa Delta Pi Invites Members

The purpose of Kappa Delta Pi is to recognize outstanding contributions to education. It invites to membership such persons as exhibit commendable personal qualities, worthy educational ideals, and sound scholarship. It shall endeavor to maintain a high degree of professional fellowship among its members and to quicken professional growth by honoring achievement in educational work.

1982-83 officers are president, Carol Lavern Gabriel; treasurer, Sharon Gay Cummins, secretary, Chris Ferguson.

Carol Garbiel is a Senior Biology Major from Galveston, Texas. Sharon Cummins is a Senior Biology Major also from Galveston, Texas. Chris Ferguson is a Senior Physical

The only reason I ever played gold in the first place was so I could afford to hunt and fish! —Sam Snead

## IMPORTANT NOTICE STUDENTS ON INSTALLMENT PAY PLAN

Your second installment payment is due on March 1, 1982. You must pay your second installment on or before 5:00 p.m. March 10, 1982 or be withdrawn from the University.

If you are withdrawn from the University, a fee of \$50 will be required in advance for Reinstatement.

Students must pay their fees on time!!!

Regardless of classification, major, method of paying dues, you should immediately see that your fees are paid. (This includes students on Financial Aid).

## HEMPSTEAD CLEANERS

DRY CLEANING

Alterations — Laundry Service

Phone 826-3798 12th and Austin

Hempstead, Texas

1-DAY DRY CLEANING SERVICE

## Marshall Chevrolet-Olds in Hempstead

"We Clobber Big City Prices"



LAWRENCE MARSHALL CHEVROLET-OLDS, INC.

P. O. Box 983 — Hempstead

HEMPSTEAD 826-2411

OLDSMOBILE

HOUSTON 463-8484

# Prairie View A&M 4th Annual Texas Conference on Black History & Culture

## University Has New Football Coach

He is Jim McKinley, 37, who comes to PVU off winning seasons at North Carolina A&T in the Mid-Eastern Conference where he took his team to bowl games in 1978 and 1980, the latter being a banner year when coach McKinley guided his team to a victory and became gold bowl champions. He started his coaching career on a winning note as he guided Allegan High School in Michigan to four championships in his five years as head coach and athletic director. He then joined Eastern Michigan as assistant coach in 1972 and 1973. Coach McKinley then took the head coaching job at Central State University and picked up the floundering football fortunes, building their first winning season in 15 years, culminated by going to the Orange Blossom Bowl Classic in 1976. He then joined North Carolina A&T in 1977, as head coach and kept on the winning track.

Let's all get behind Coach McKinley and his staff and give them a rousing Prairie View A&M University welcome and super-cat support. Let's go Panthers!

## Sigma Spotlight

By Eric Fagan

The brothers of PHI BETA SIGMA, INC., would like to take time out to recognize one of our outstanding brothers, Mr. Arnold J. Mallett. Brother Mallett has just been inducted into the 1982 Who's Who Among Students in American Universities and Colleges. Arnold is a graduate of Worthing Sr. High School, Houston, Texas. He graduated with the GPA of 4.0. He enrolled in Prairie View A&M University in 1979 since then he has joined and became a member such Organization Memberships and Honors as The Association of Junior Fellows, The President's Honor (5 of 6 semesters), PHI Tau Sigma National Mechanical Engineering honor society, American Society of Mechanical Engineering, Engineering Graphics Award, Engineering Concepts Award and PHI Beta Sigma Fraternity Inc. Arnold joins an elite group of students selected from more than 1,300 institutions of high learning in all 50 states, the District of Columbia and several foreign nations. The Brothers of PHI BETA SIGMA Fraternity Inc. would like to let Mr. Arnold T. Mallett and the students now that we are very proud of Brother Mallett.

By Eric Fagan

## Baseball —

Continued from Page 1-A in the seventh with a five run rally tying the scored 8-8. The Rams were up 9-8 in the top of the ninth. The Panthers charged ahead for good when freshmen Jerry Robertson, Hill, and Myron Day scored the final runs to make the score 11-9. Freshman pitcher James Laster secured the win in the bottom of the ninth striking out the side.

The History Department of Texas Southern University presented the 4th Annual Texas Conference on Black History and Culture. The program was held in two distinctive parts.

Part one took place Friday, February 12, 1982 between

10:00 a.m. and 12:00 noon. This was the historical part. Four historians read their papers on the history and culture of black Texans. These Historians were Drs. Garna Christian of the University of Houston-Downtown; Michael R. Heintze of Texas Lutheran

College; Lamar Kirven of Huston-Tillotson; and Merline Pitre of Texas Southern University.

Part two took place Monday, February 15, 1982 between 10:00 a.m. and 12:00 noon and consisted of several poets reading some of their

original works. Among those participating were Mrs. Denise Carreathers Armstrong; Mrs. Linda Jones Malonson; and Mr. Obidike Kamaw.

Dr. Anasuya Rao of Prairie View A&M University presided at the historical meeting. Both meetings were held in

the Board Room of the Student Life Center on the campus of T. S. U. and was put together by Dr. Howard Jones.

Never leave packages on your car seat. They encourage thieves to break in.

## Good friends stand up for you when you need them.



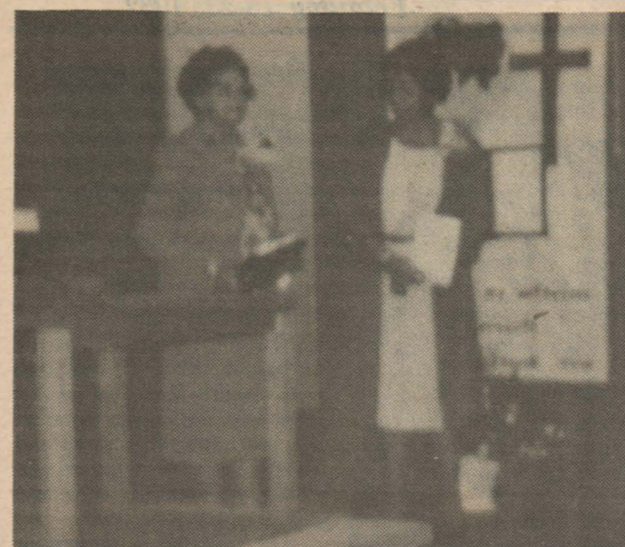
Phone calls got you nowhere, but this should get her attention. A mission requiring split-second timing, perfect planning and most importantly, some surefooted, stand-up guys.

When you come down to earth, spring for something special. Tonight, let it be Löwenbräu.



## Löwenbräu. Here's to good friends.

© 1982 Beer Brewed by Miller Brewing Co., Milwaukee, Wis.



SERVICE AWARD — Mrs. Bessie Thomas (left) presents award to Mrs. D. I. Burdine for service to the church and community.

## United Methodists Observe Tenth Anniversary

The First United Methodist Church of Prairie View, Texas celebrated their tenth anniversary with a worship service on Sunday, December 13, 1981. The occasion proved very meaningful, and the message delivered by the Reverend Robert Earl McGee, pastor of the Boynton United Methodist Church of Houston and the Men's choir were very refreshing and inspiring. The efforts and cooperativeness of the membership were encouraging and signified the possibilities of what God can do as we give ourselves over to him for his use.

A high moment in the service was the placing of a plate on the organ which had

been given by Miss Dorothy I. Burdine, in memory of her parents of Denver, Colorado by Dr. James E. Johnson, the Church Lay Leader, and the presentation of a plaque to Miss Burdine for the outstanding service which she has rendered to young people in the Prairie View community being presented by Mrs. Bessie Thomas (left). The service concluded with a warm fellowships and refreshments of old and new friends. The membership and friends of the community were extremely proud to welcome the McGees back since their departure of four and a half years ago as the pastoral family. The Reverend Darnell L. Walker is pastor.

## Entertainers Sought for Frontier Festival

The Second Annual Frontier Days Festival is looking for all types of entertainers, magicians, singers, dancers, comedians and any specialty acts to perform at the Festival which runs on weekends from April 24 - May 30.

Auditions were held on January 28, 29, 30, 31 and will continue on February 4, 5, 6, and 7 between the hours of noon and 8 p.m., except on February 6 when hours will be from 10 a.m. - 8 p.m. Auditions will take place at Frontier Days located on FM 1960 East, 7 miles east of Lake Houston between Huffman and Dayton.

Frontier Days is an annual

western theme festival complete with such attractions as big name entertainment, live shoot-outs, covered wagon rides and arts and crafts and food booths, all reflections of the wild west.

For more information those interested should call 1-258-2126 or 1-258-3089 and after 6 p.m. 324-2565.


### Attention:

**STUDENT FEE PAYMENTS MUST BE MADE ON TIME**



**Chicken 'N Rolls**

**COUNTRY FRIED CHICKEN, HAMBURGERS, COUNTRY FRIED STEAK**



Hempstead Prairie View Waller

Open 10 a.m. - 10 p.m.  
FAMILY DINING ROOM  
DRIVE THRU WINDOW  
CATERING Tel. 826-6578  
Hwy. 290 Hempstead

## Security Department

The impounded vehicles below must be claimed by the owner on or before March 8, 1982. If the owner fails to claim his vehicle within this time, it will be disposed of in accordance with the Texas Abandon Vehicle Law.

Make	License No.	Last Owner (DMV)
Buick Riviera	INR-610 TX.	Wayne Spears
Chrysler Imperial	XVN-648 VA.	Robert Henry
Chevrolet	EHE-429 TX.	Anna M. Hillman
Chrysler New Yorker	QEX-864 TX.	Raul Martinez
		Terry Robinson

While touring the campus a large number of vehicles were observed improperly parked (back-up) in parking spaces and/or not displaying a campus decal. Faculty/Staff members and students are reminded that these vehicles will be towed away and impounded. A \$50.00 towing fee will be assessed in addition, payment of a traffic violation fine and purchasing a valid campus decal. Again the Security Department is asking for everyone's cooperation in this matter.

We are now taking applications for Security Officers. See Chief Burditt for details.

What this country needs is a more practical government. Japan has the right idea. The Japanese called off a survey of the high cost of living because it cost too much. —Lou Erickson.

## NOTICE: Help Save Student Financial Aid Contact Your Congressman Now

### Technical Majors:

# U.S. Steel invites you to check out a career in management.

- You're a self-starter.** U.S. Steel is a company on the move, and we're looking for people with the initiative to tackle major projects and push them through to completion.
- You're a fast thinker.** While the clock ticks, you may have to make decisions involving the future of thousands of U.S. Steel people—and the investment of millions of dollars.
- You're a team player.** At a dynamic place like U.S. Steel, guiding and motivating others is likely to be an important part of your career in management.

Today U.S. Steel is a whole lot more than the nation's largest steelmaker.

We're in chemicals, with annual sales of over \$1 billion. We're in resource development, ready to fill industry's growing needs for coal, iron ore, uranium and other vital materials. We build complex structures all over the country. We offer engineering services all over the world. And that's far from all.

Join us, and you're immediately a full-fledged member of our management team. Your opportunity for advancement is as bright as you are.

Money is good. Fringe benefits are liberal. And you can take advantage of a variety of continuing personal-development programs—including tuition refund.

Visit your placement office and check out the openings our representative plans to discuss. But don't worry if what interests you most happens not to be on the list. Just write us with your qualifications: Dave Bates, College Relations, U.S. Steel, 600 Grant St., Pittsburgh, PA 15230. An equal opportunity employer.

Meet the U.S. Steel representative on campus:

**Mon., Mar. 1**



### Visiting Scientists to Speak At Biology Dept. Seminar

The Biology Department of Prairie View A&M University is hosting a visiting scientist under the Visiting Scientists for Minority Institutions Program, which is sponsored by the National Institute for General Medical Sciences, National Institutes of Health, and administered by the Federation of American Societies for Experimental Biology. He is Dr. G. Michael Iverson, Department of Pathology, Yale University School of Medicine, New Haven, Connecticut. The general topic of his seminar presentation is "Function and Regulation of the Immune System."

Dr. Iverson received his B.A. from San Jose State College and the Ph.D. degree in Cellular Immunology from the National Institute for Medical Research, Mill Hill, London, England. He was a Fellow for the Imperial Cancer Research Fund, Tumor Immunology Unit, Zoology Department, University College of London from 1971 to 1973. Dr. Iverson served as a Staff Fellow in the Cellular Immunology Section, Laboratory of Microbiology and Immunology, National Institute of Dental Research for a year and then accepted a position on the research academic staff in the Department of Genetics at Stanford University School of Medicine from 1974-1978. In 1978, he received a joint appointment as a Research Associate in Pathology and Lecturer in Biology at Yale University. Dr. Iverson accepted his present position as Senior Associate in the Laboratory of Cellular Immunology, Howard Hughes Medical Institute at Yale University School of Medicine.

Dr. Iverson is a member of several professional societies and his research interests



### Navy Panthers Visit Norfolk in High Style

Nine midshipmen received the first class treatment as they

included ways of isolating fetal cells from the peripheral blood of pregnant women and the molecular basis of immunoregulation. He has authored and coauthored 23 research papers, books and chapters in the field of immunology. Some of his extracurricular activities include the following:

1974 — Co-chairman (with Dr. H. Kunkel), Workshop on idiotypes, 2nd International Immunology Congress, Brighton, England.

1981 — Co-chairman (with Dr. E. Vitetta), Workshop on Cell Surface Molecules and MHC, 10th ICN-UCLA Symposia on Molecular and Cellular Biology, Salt Lake City, Utah.

flew to Norfolk, Virginia over the weekend of February 6 aboard the personal aircraft of the Commander in Chief of the Atlantic Fleet. The midshipmen making the trip participated in the third annual banquet honoring the first black naval aviator, Jesse Brown.

Midshipmen Shery Brooks, Lewis Edmonds, Benjamin Russell, Said Ziyani, Keith Roberson, Miro Perry, Leslie Hobley, Nina Sosa and Donna Anderson made the trip and were able to meet and talk to several naval officers, some of whom had graduated from

**MODERN TECHNOLOGY**  
An American company announces an invention; the Russians claim they made the same discovery 20 years earlier; the Japanese start exporting it.

### Reading Program Operating From Learning Center

The College of Education is pleased to announce that a Comprehensive Reading Program has been launched at the University. The goal of the program is to improve the basic skills in reading of 500 freshman students in the areas of rate, comprehension, and vocabulary. The program will begin on October 1, 1981, and end on August 31, 1982.

The program is located in the Learning Resources Center of the W. R. Banks Library. The reading lab is in operation Monday through Friday 8:00 a.m. - 5:00 p.m. and 6:00 - 8:00 p.m. Monday through Thursday.

Participants for the program will be recruited from the departments of Education, Engineering, Nursing, Army ROTC, and Naval Science. We are urging students from the above departments to enroll in this unique program. The program will help students develop good basic skills in reading, and it will further their academic success now and in the future.

Program Staff: Mrs. Lois King, Director, AIDP Comprehensive Reading Program; Miss Cora Deereaux, Graduate Assistant; Miss Maureen Palmer, Graduate Assistant; Mrs. Carolyn Plempner, Graduate Assistant; Miss Renita Price, Secretary.

married, and has a daughter, 13. His wife's name is Connie.

Prairie View. They were able to also talk to several educators and politicians from the Tidewater area.

### New Coach

CONTINUED from Page 1

with him a 9-3 record, the best ever in the history of the university.

"I am proud of the fact that all of my head coaching jobs were accepted following a losing season, and in several cases, many losing seasons, and was able with the help of my assistants to return the teams to winning traditions," Coach McKinley says. "There is no reason we cannot do that at this find university!"

A graduate of Western Michigan University in Kalamazoo, Michigan, in 1966 with a BS in Physical Education, Coach McKinley is

## Training Students to Launch Careers

### Seminars Drive to Be Helpful

According to the feedback received from students and faculty, high ratings were given to the twenty-two business and industry consultants who recently participated in a two day series of classroom seminars for Junior and Senior students.

The purpose of the seminars was to share current employment trend information, tips on proper interview preparation, effective communication skills, employer-employee expectations and other points of protocol for the job seeking process.

An evaluation of the program by the professional participants keyed in on the twofold rewards of this endeavor. Bill Trahan of McDonnell-Douglas Corporation said, "The program will help to give us a better employee," and Mat Matsumoto, Chief Electrical Engineer of Bechtel Power Corporation felt, "The program is a valuable part of the student's education!"

The student body response was summed up by a recent Prairie View graduate and Exxon representative, Jiles B. Daniels who said, "It was rewarding to see the high student interest," and Shell's representative said, "I wholeheartedly endorse the program!"

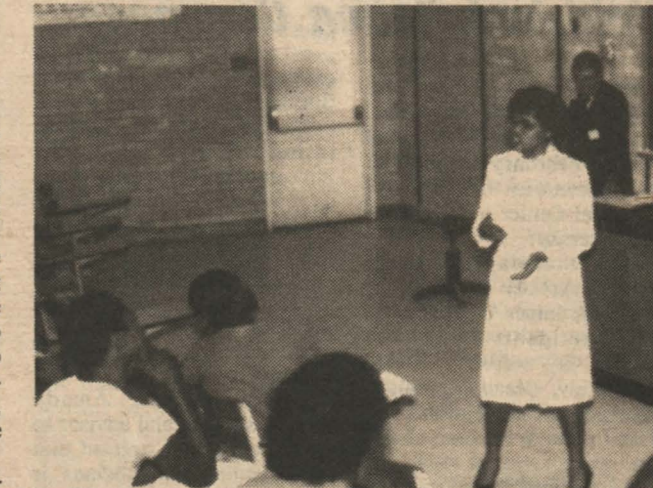
Dick Hansen of Dow Chemical Corporation said, "Hopefully, in our future interviews we'll be able to see how well we did!" The seminar topics were specifically geared for students who in weeks to

come are scheduled to actually participate in campus interviews for permanent employment. Many of the presenters will also return to conduct these interviews.

Recently, as a result of the seminars, recruiters returning to interview on campus have given positive evaluations to students. Mat Matsumoto said, "Generally the interviewees were well prepared, well groomed and impressive in their presentations!"

Robert Pomazal of Caterpillar Tractor Company said, "I talked to several good candidates and hope we will be able to invite a couple in for plant visits!"

W. Fitzgerald of Texas Instruments felt, "The student response was very good," and Bendix Corporation's John

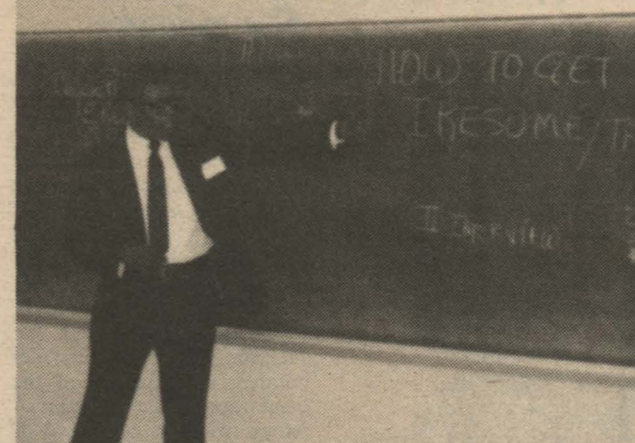


Successful Career Seminars will be conducted twice each year in the future

Clabaugh after highly rating each interviewee wrote, "This is the best trip Bendix has made to this campus!"

Because of the positive results the Division of Career

Education and Placement along with the Prairie View Business-Industry Cluster representatives plan to conduct these seminars twice each school year.



Industry Consultant outlines steps to take in launching a career.

## Credit Unions Annual Meeting Set March 15

On December 1, 1981, the Prairie View A&M University Employees' Federal Credit Union changed over from manual posting to the computer posting through Service Bureau Company (SBC) in Houston. Since we are now living in a computer age, it was almost mandatory that this change be made. We have encountered a few transitional problems, but none will be so severe that we cannot solve in the next two weeks.

One of the big changes that you will notice is that we have discontinued the Passbook. A financial statement will be mailed to you at the end of every quarter stating your share balance, loan balance, interest paid, and dividends earned over a three month period. The first such statement will be forthcoming later this month. Please retain this statement, because it will contain I.R.S. information.

We are now offering many new Savings Programs. You are now able to purchase from us the All Savers Certificate, 2 1/2 year Share Certificate, 6 months Money Market Share Certificate and also the new I.R.A. Account.

We are inviting all members to come to our Annual Meeting on March 15, 1982. At this meeting, you may ask questions and make suggestions pertaining to the operation of the credit union and share in the wonderful hospitality that will be provided for you. With your cooperation, I think we can build a credit union that everyone will be proud to be associated with.

John Adams and Thomas Jefferson were the only signers of the Declaration of Independence to become presidents of the United States. There were 56 signers of the document.

Phone 713-826-2438

## First Savings Association

Member FDIC

Across From Sears

WILLIE STEFKA Branch Manager

1206 11th St. Hempstead, Texas

**Interested in a Masters Degree in ACCOUNTING? BUSINESS ADMINISTRATION? PUBLIC ADMINISTRATION?**

Discover Rice University's Jesse H. Jones Graduate School of Administration — A Representative will be on campus on

**DATE: February 24, 1982 (Wednesday)**

**TIME: 9:30 a.m. — 11:00 a.m.**

FOR FURTHER INFORMATION CONTACT: CAREER EDUCATION & PLACEMENT CENTER

Please send an application and a brochure about Rice University's JONES GRADUATE SCHOOL to:

NAME (please print) \_\_\_\_\_

ADDRESS \_\_\_\_\_

CITY \_\_\_\_\_ STATE \_\_\_\_\_ ZIP \_\_\_\_\_

COLLEGE \_\_\_\_\_ DEGREE DATE \_\_\_\_\_

**RICE UNIVERSITY**  
JONES GRADUATE SCHOOL OF ADMINISTRATION  
P. O. Box 1892  
HOUSTON, TEXAS 77001  
(713) 527-4893

Rice University is an equal opportunity/affirmative action institution.

BEGINNER OR ADVANCED Cost is about the same as a semester in a U.S. college: \$2,989 Price includes per round trip to Seville from New York, room, board, and tuition complete. Government grants and loans available for eligible students.

Live with a Spanish family, attend classes four hours a day, four days a week, four months. Earn 16 hrs. of credit equivalent to 4 semesters taught in U.S. colleges over a two year time span! Your Spanish studies will be enhanced by opportunities not available in a U.S. classroom. Standardized tests show our students' language skills superior to students completing two year programs in U.S.

Hurry, it takes a lot of time to make all arrangements.

FALL SEMESTER - SEPT. 10-DEC. 22 SPRING SEMESTER - FEB. 1 - JUNE 1 each year

FULLY ACCREDITED A program of Trinity Christian College.

## SEMESTER IN SPAIN

2442 E. Collier S.E. Grand Rapids, Michigan 49506 (A Program of Trinity Christian College)

**CALL TOLL FREE** for full information 1-800-253-9008 (In Mich., or if toll free line inoperative call 1-616-942-2903 or 942-2541 collect)

## M.B.A. M.S. PH.D.

Considering pursuing a graduate degree in business administration?

Investigate the opportunities at TEXAS A&M UNIVERSITY.

A business representative will be on your campus

**Thursday, February 18**  
9:00-3:00

CONTACT YOUR PLACEMENT OFFICE SOON FOR AN INTERVIEW. EEOC

PRAIRIE VIEW A&M UNIVERSITY EMPLOYEES FEDERAL

**credit union**

P. O. BOX 2606  
PRAIRIE VIEW, TEXAS 77445

A Service to The Prairie View Community for Over Forty Five Years

**NOW OFFERING**

REGULAR SHARE ACCOUNTS (\$25.00 Minimum)

ALL SAVERS CERTIFICATE (\$500.00 Minimum)

30 MONTHS SHARE CERTIFICATE (\$1,000 Minimum)

6 MONTHS MONEY MARKET CERTIFICATE (\$10,000 Min.)

NEW INDIVIDUAL RETIREMENT ACCOUNT (IRA) (\$1,000 Minimum)

OUR MOTTO: "Not for Profit  
Not for Charity  
But for Service"

OFFICE HOURS: Monday thru Friday 9:00 - 6:00 p.m.  
Saturdays 9:00 - 12:00 Noon

PHONE: (713/ 857-4925)

OFFICE LOCATION: P. V. Alumni House

## Can You Believe!

A creative engineering career with the Southern California IEEE Company of the Year

The Los Angeles Department of Water and Power, the largest municipal utility in the nation, has challenging career opportunities for ELECTRICAL, MECHANICAL, CIVIL and SANITARY engineering graduates.

Help us to design and construct the 3,000 megawatt, coal-fueled Intermountain Power Project in Utah or its ±500 kilovolt, direct-current transmission system.

Or maybe you prefer working with alternative energy resources, monitoring air and water quality or helping to mitigate community impacts.

The Los Angeles Department of Water and Power offers very competitive salaries and benefits with the opportunity for three-day weekends.

We invite you to join us and become part of an engineering team working on the forefront of energy technology. Our engineers will be interviewing selected engineering majors on your campus soon. Contact your Career Planning and Placement Office for an appointment now or write to:

**DWP** Engineering Recruitment Officer  
Los Angeles Department of Water and Power  
P.O. Box 111 — Room 503  
Los Angeles, CA 90051

An AA/EEO Employer



## PV Liberian Students Hold Installation Ceremony

Newly-elected officers of the Progressive Liberian Students' Organization (PLSO) at PV were on February 13 installed at a ceremony held in the Memorial Center ball-room of the university.

Those installed were: Messrs. Arthur V. Suomie, president; James W. Harris II, vice president; Paul M. Bropleh, Jr., secretary; Moses M. Dukuly, treasurer; Francis Nyeekepe, parliamentarian; and Miss Leona Williams, chaplain.

Mr. Walter J. Hall, a staff member of PV, who installed the officers, said it was a privilege to participate in the program.

He hoped Liberians at this university will follow the footsteps of their countrymen, who he said, had left excellent academic records at PV.

Delivering his inaugural address, Mr. Suomie called on his colleagues to unite to make the organization more functional and responsive to their needs.

Said he: "I am fully aware of the responsibilities you have placed upon me, but let us all remember that unity is strength."

Mr. Suomie said he is strongly determined to raise funds to undertake several projects during his tenure of

office, and name transportation as his priority.

He explained that transportation will surely serve the interest of all Liberian students as it will enable them to move about freely to shop or do other things.

The president further called on each member of PLSO to lay aside their differences and work in the greater interest of the organization.

Later, Mr. F. Amadu Sirleaf, sponsor and advisor to the organization, stressed that unity among the students is necessary to make their presence felt in the community as well as cement their relationship with other students at PV.

Mr. Sirleaf, a Liberian and a former PV graduate who now serves on the staff, said it is also important for Liberian students to join other Africans at PV to present a positive picture about their continent to Americans.

He quickly suggested that African students at the university pull their resources together to participate in the institution's annual homecoming and to also celebrate African Unity Day.

Mr. Sirleaf then commended the PVA&M University for catering to the needs of foreign students, adding, "my new responsibilities also entails



**EYE CATCHERS** — Seen often around the Communications and Publications building (Hilliard Hall) are Valerie Cooper, Radio-TV Major (left) and Cecelia Brown, Nursing Major who work on the Pantherland staff.

## Senior Corner

The Senior class of 1981-82 is "mainstreaming toward the future." The first official class meeting of the new year was held on February 9, 1982 in the Harrington Science Building.

The special guest speaker was Lieutenant Frank D. Jackson. He profoundly elaborated on the origin of the Black race on the continent of Africa (which is composed of 42 nations/countries), and the unique circumstances that have resulted to the presence of Blacks in America today, in reference to Black History. Yes, the meeting was very informative and exciting.

Also, the officers, assistants, class members and the sponsor, Mr. Montgomery of the Registrar's Department. Have all designed formats, established activity committees, and planned fundraisers for the benefit of the class and the university as well.

In the future, the class will be determining what type of fabulous remembrance gift it will give Prairie View A&M University from the Senior class of 1982.

The officers are: President, Gladys Branch; Vice President, Chris Ferguson; Secretary, Mark Falls; Treasurer, Leada Morris; Business Manager, Debra Levels; Parliamentarian, Terrel Edwards; Chaplain, Ronald Hill; Reporter, Hedy Ratcliff; Chairman Activity Committees, Lance Wyndon.

The assistants are: Assistant Secretary, Connie Gunnels and Assistant Reporter, Terri Robinson.

Thanks, Mr. Senior, Jerome Montgomery, and Ms. Senior, Eva Brooks, for representing the Senior class in a very honorable manner.

Support The Panthers

## Scholarship Available for Journalism Students

The Ralph McGill Scholarship Fund offers scholarships for the 1982-83 school year of up to \$1,500 each to students with southern backgrounds who have completed at least two years of college. Jack Tarver, chairman of the Scholarship Fund said today.

Tarver said May 1st is the deadline for applications. He said a number of scholarships are awarded each year to students who have demonstrated a long-time interest in the news and editorial phase of newspapering.

Scholarships, he said, are limited to those young men and women whose roots lie in the south. Applicants must also convince the Awards

Committee that they firmly intend to pursue a career in daily or weekly newspapering. Tarver said the Awards Committee want to give scholarships to those who are likely to become leaders in the newspaper field.

Successful applicants will be required to maintain a "B" average in order to keep the scholarship.

A letter of not more than 500 words telling why the applicant wants a scholarship, together with a photograph of the applicant must accompany each application. Applicants also must have a letter of recommendation from a college authority.

Application blanks may be obtained from: The Ralph McGill Scholarship Fund; Box 4689; Atlanta, Georgia 30302.

According to The Reverend W. Van Johnson, Dean of Chapel at Prairie View A&M University, the Program of Requirements has been submitted to the Facilities Planning Division, Texas A&M University System for signatures and the Facilities Planning Division Staff, Texas A&M University System will submit the plans to the Chancellor for approval on March 1, 1982. After which on March 23, 1982 the Chancellor's Office will submit the Program of Requirements to the Board of Regents, Texas A&M University System for action.

**ESTEE LAUDER PRODUCTS JR. or MISSY FASHIONS JAMES AVERY JEWELRY**  
Jeanette's Gifts and Fashions  
837 12th St. Hempstead, Texas  
Downtown Hempstead  
Telephone 826-330  
9:00-5:30 Monday-Friday - Saturday 9:00-5:00

**CITIZENS STATE BANK**  
  
MEMBER F. D. I. C.  
P. O. Box 575 Phone 826-2431  
HEMPSTEAD, TEXAS

Committee that they firmly intend to pursue a career in daily or weekly newspapering. Tarver said the Awards Committee want to give scholarships to those who are likely to become leaders in the newspaper field.

Successful applicants will be required to maintain a "B" average in order to keep the scholarship.

A letter of not more than 500 words telling why the applicant wants a scholarship, together with a photograph of the applicant must accompany each application. Applicants also must have a letter of recommendation from a college authority.

Application blanks may be obtained from: The Ralph McGill Scholarship Fund; Box 4689; Atlanta, Georgia 30302.

LONGARM PLIABLE  
ARCADIA RANGOON  
ITALIAN INCENSE  
CHASE DUNGAREES  
USANCE  
CAPS TREE BINGS  
AVIATRIX AURORA  
SANFRANCISCOBAY  
ESTERN UNIONIZE  
STORK ASTA YSER  
STERN  
CAVALCADE TNAPT  
ADORERS PIZARRO  
RATATAT TNERTIA  
EYBSOME DESCEND

**FORD**  
  
USED CARS  
Come see our fine selection of Ford and Mercury Products  
**HEMPSTEAD FORD-MERCURY, INC.**  
HEMPSTEAD, TEXAS  
SUPPORTING THE PANTHERS

## Wanted: Border Patrol Agents

The U. S. Department of Justice Immigration and Naturalization Service is seeking qualified individuals to work as Border Patrol Agents. To qualify, you must pass a written test that measures your ability to learn and perform the duties of your position.

- Other major requirements are:
1. Learn to speak and read Spanish
  2. Gather factual information through questioning, observations, and examination of documents.
  3. Establish and maintain interpersonal relationships with a wide variety of people.
  4. Learn law enforcement regulations through classroom training or on-the-job training.
  5. Learn to take charge, maintain composure and make sound decisions in stress situations.

To be considered for a position with this agency, you must:

1. Be a U. S. Citizen
2. Possess a valid automobile driver's license.
3. Establish an eligible rating on the written examination.
4. Appear before an oral interview panel.
5. Be in excellent physical condition. (Binocular vision required and must test 20/40 with corrective lenses).

How to apply...  
Write: The Immigration and Naturalization Service  
Special Examining Unit  
425 I Street NW - Room 6021  
Washington, D.C. 20534

## Announcing - Education Job Fair

**TO: All Teacher Candidates**  
**FROM: Educational Placement Office**  
**Prairie View A&M University**  
**RE: Education Job Fair**  
**April 7, 1982**

The Educational Placement Office of Prairie View A&M University will sponsor its Third Annual Education Job Fair on Wednesday, April 7, 1982. Activities will begin with a pre-Fair Orientation session at 8:30 to inform interested candidates in:

- application process and follow-up
- areas of electives (or minor's) which enhance employability
- Placement Center services and procedures
- on-site update of credential folder
- school district employment outlook
- target districts which match individual qualifications

Many Texas school districts and several from out of state will attend to seek permanent job placements. Alumni, recent graduates, as well as those anticipating graduation in May are invited to participate.

**GUARANTY BOND STATE BANK**  
MEMBER F. D. I. C.  
Waller, Texas

**FOR YOUR INSURANCE and REAL ESTATE NEEDS**  
**WALLER INSURANCE & REAL ESTATE**  
JACK WARREN  
Owner  
Direct Houston Phone 463-1871  
Office Phone 372-3689

## Ag Scientists Presented Research at Nat'l Conference

Scientists from the College of Agriculture at Prairie View A&M University presented the results of their recent research at the ASA meeting held February 7-10, 1982 in Orlando, FL. Mr. William Anthony, Research Specialist, presented his paper entitled "Soil Cadmium and Lead in Roots and Tops of Sudan-Sorghum Grass." The work is part of a larger project studying the adulteration of the human food chain. Dr. Arthur Mangarou presented his research results dealing with forage production in South Texas in his paper, "The Effect of Nitrogen and Phosphorus Fertilization in the Performance of 5 Improved Forage Cultivars."

Prairie View is proud of its faculty and students whose research and dedicated study has advanced the science of their disciplines and have brought credit and honor to the University.

**BRANNAN'S SUPERMARKET**  
MEATS OF QUALITY  
372-3639  
220 Cherry Waller

**PCS ACCEPTED**  
**Students Receive 10% DISCOUNT on All Prescriptions with ID**  
**Waller Pharmacy**  
372-2131  
1219 Farr Street Waller, Texas 77484

## Phi Beta Omega

The Phi Omega Co-ed Fraternity Inc., held their Spring Smoker February 10th, 1982 at the Harrington Science Building. In attendance were the Fraternity Sisters and Brothers, interested person and future pledges.

The President Reginal Williams opened the meeting by introducing himself and welcoming the future pledges. The prayer was then given by the treasurer sister Katy Mead. The brothers and sisters of the

## Accounting Club

This spring the Accounting Club has several activities that we would like the students and faculty to join in.

Last semester we had activities such as trips to the University of Texas, C.P.A. Miller Review, established an accounting honor society and played a basketball game against the Marketing and Management club which we won.

This spring the club will be doing FREE Income Tax Returns for the community, seminars with professional people and to help get materials together to increase our library. To promote student involvement in the College of Business, to help Dr. Rollins get the college of business accredited.

We are extending a special invitation to all accounting majors and minors to join the club whether you are a freshman, graduate student or even a faculty member. The club meets every first and third Thursday at 7:00 p.m. in Hobard Taylor Building in 1C121. Membership dues are \$5.00 per semester.

The sponsors are Rosalinda Baker, C.P.A.; Carlton Perkins, Attorney-at-Law; and Dwansha Whadwa, C.P.A. The officers are: president, Valerie J. Johnson; vice president, Dwayne Grismore; 2nd vice president, Mark Hayes; secretary, Carrie Wright; director of organization, Tonie Square; assistant secretary, Jacqueline Johnson; treasurer, Maurice Sebastian; community chairman, Billy Dixon; and sgt. at arms, Wayne Morrison.

## MAKE \$12,200 FOR COLLEGE WHILE YOU'RE GOING TO COLLEGE.

**ARMY RESERVE BE ALL YOU CAN BE.**  
**U. S. ARMY RECRUITING STATION**  
1242 West 43rd Street, Houston  
(713) 686-3779

24-HOUR SELF SERVICE  
at  
**HEMPSTEAD WASHATERIA**  
TOP LOADING SPEED QUEEN  
and  
DOUBLE-LOAD PHILCO BENDIX MACHINES  
Next Door to Pick & Pay Food Market  
Hempstead, Texas  
YOUR PATRONAGE APPRECIATED

**Rustic Oak RESTAURANT**  
ON U.S. 290  
HEMPSTEAD, TEXAS  
"Famous For Our Steaks"  
PRIVATE DINING AREA  
Will Accomodate Up to 150  
For Banquets - Parties  
Business Meetings  
Hours: 5:30 a.m. to 10:00 p.m. Daily  
Hempstead, Texas 77445