

Prairie View A&M University

Digital Commons @PVAMU

PV Panther Newspapers

Publications

2-17-1978

Panther - January 1978- Vol. LII, No. 10

Prairie View A&M University

Follow this and additional works at: <https://digitalcommons.pvamu.edu/pv-panther-newspapers>

Recommended Citation

Prairie View A&M University. (1978). Panther - January 1978- Vol. LII, No. 10., *Vol. LII, No. 10* Retrieved from <https://digitalcommons.pvamu.edu/pv-panther-newspapers/201>

This Book is brought to you for free and open access by the Publications at Digital Commons @PVAMU. It has been accepted for inclusion in PV Panther Newspapers by an authorized administrator of Digital Commons @PVAMU. For more information, please contact hvkoshy@pvamu.edu.

PV's Centennial Year Begins

Prairie View A&M University is observing its 100th Anniversary throughout the year, 1978.

The state-supported institution opened its doors to eight students in March 1878, following its earlier establishment in 1876 by the 15th Texas Legislature. The school was authorized and has remained a part of the Texas A&M University System.

According to Dr. Alvin I. Thomas, president, the Centennial Theme is "Prairie View A&M University: Serving People Now and in the Future."

A Centennial Year kick-off Banquet has been scheduled for Friday evening January 27 at the Shamrock Hilton Hotel in Houston. The January banquet and another planned for Founders Day in March will involve alumni friends, stu-

dents, faculty and staff of the University. Additional information concerning these particular events may be secured by contacting the Prairie View Career Education Offices on campus and in Houston.

Special monthly summit topics for emphasis by visiting speakers and various campus activities have been selected to complement the centennial theme. The University itself

and a review of its outstanding accomplishments serve as the sub-theme for January. February's feature is "Religion and Moral Values." A major speaker for February is the Reverend Jesse Jackson, well-known civil rights leader. Several other national religious leaders are scheduled for presentations during the month.

Topics set for other months

of 1978 include: March-Education; April-Transportation and Housing; May-Art; Music and Drama; June-Agriculture and Commerce; July-Health Care; August-National Security and Defense; September-Free Enterprise and Creative Capitalism; October-Criminal Justice and the Law; November-Research Science and Technology; and December-The Family (man, woman and child).

Several other special events are being planned during the year which cuts across two academic terms. Other major dates for special centennial activities include: Miss Prairie View Pageant (April), Parents Day and Commencement

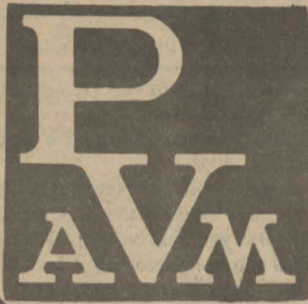
(May), Summer Session Commencement (August), Academic Convocation (September) and Homecoming (November).

Special publications scheduled for release in 1978 include a historical booklet, "The First 100-Years," special University-wide and departmental brochures, newspaper supplements and features, special issues of the school newspaper, The Panther, and a Centennial Yearbook. The school's Communications Committee is also working on several other media projects including television and radio documentaries and special features and exhibits for state-wide circulation.

The PANTHER

JANUARY
12-17
1978

Volume 52, No. 10



PRAIRIE VIEW
A&M
UNIVERSITY

100TH
YEAR

PV Students Listed in Who's Who in U. S. College

The 1977-78 edition of Who's Who Among Students in American Universities and colleges will carry the names of 47 students from Prairie View A&M University, Prairie View, Texas who have been elected as being among the country's most outstanding campus leaders.

Campus nominating committees and editors of the annual directory have included the names of these students based on their academic achievement, service to the community, leadership in extracurricular activities and future potential.

They join an elite group of students selected from more than 1,000 institutions of higher learning in all 50 states, the District of Columbia and several foreign nations.

Outstanding students have been honored in the annual directory since it was first published in 1934.

Students named this year from Prairie View A&M University, Prairie View, Texas are:

Sharon Adams, Phillip W. Alexander, N. L. Allen, Edward D. Arkadie, Ruby Banks, Roslyn R. Baker, Adda Batie, Carolyn Boozer, Floyd Boozer, Frances C. Brown, Denise Celious, Charlie Choyce, Rex Conn, Margaret M. Cooper, Clinda M. Crowe, Don J. Daniels, Glenda E. Davis, Robert L. Deese, Kenneth R. Edmondson, Lionel F. Evans, Rose M. Freeman, Angela Garrett, Angela D. Greaux, Consuella Hamilton, Carolyn Harris, Gwendolyn Hauntz, Elliott Kerl, Jesselyn King, Kelvin Kirby, Terry Knighton, Sabrina Lee, Joe Lewis, Ronald Maddox, Beverly Mosely, Secetter Phillips, Paula G. Ratliff, Leroy Richardson,

Matthew Ade. Shoyebo, Lonnie J. Smith, Vivian Strauthers,

Janet Thomas, Julie Thomas, Beverly A. Veal, Tamara Wiley, Janet Y. Wright, Gwylen B. Wright, Verette Wynne.

PE Professor Re-Appointed by Governor Briscoe

Governor Dolph Briscoe on December 22 announced the re-appointment of Professor Leon English of Prairie View A&M to the Governor's Commission on Physical fitness. Also re-appointed were Olympic sprinter Johnny Jones of Lampasas, a University of Texas sophomore; Dr. Kenneth Cooper of Dallas; and James Townsend of Austin.

Appointed for the first time were A. D. Gerner, Jr. of Dallas; John Warner of Tyler; and Donald Hale of Big Spring.

Centennial Kick-Off Banquet Set for January 27th

The first official public event launching the year-round observance of the university's Centennial Year will be held on January 27 in Houston. The occasion is a \$25 per plate Kick-off Banquet to be held in the Grand Ballroom of the Shamrock-Hilton Hotel.

Planned as a festive occasion and one to make official announcements for the year ahead, the banquet is open to students, faculty, staff, alumni and friends of the university. Many friends of the business and industrial communities have committed support of the activity.

Tickets for the banquet, set to begin at 7:30 p.m., are available at the Development Offices at Prairie View and in Houston, and at most departmental offices on campus.

Sigma's Observe Founder's Day

Phi Beta Sigma Fraternity Inc. was founded on January 9, 1914 by three distinguished men. These men were Brothers A. L. Taylor, Charles I. Brown, and Leonard F. Morse.

Phi Beta Sigma is the youngest of the four black greek fraternities and in recognition to the founders, the men of Sigma take time each year to give honor to them and their great fraternity.

Sigma's Founders Day program will be held on January 15, 1978 in the Memorial Center Ballroom at 3:30 p.m. The Speaker of the hour will be Dr. Alvin J. McNeal. Dr. McNeal is a past president of the fraternity and has held this office longer than any president. He will be speaking on the theme, "Sigma Men Building Bridges to the 80's." The men of Sigma are extending an invitation to

See SIGMAS, Page 6

Rev. Jessie Jackson to Speak Here in February

Rev. Jessie Jackson to speak here in February. . . .

National civil rights leader and activist Reverend Jessie Jackson of Chicago will serve as special convocation speaker on February 8 at Prairie View A&M University.

Jackson, director of Operation PUSH, will serve as special guest and one of the visiting speakers for the 20th Annual Ministers Conference which will convene at Prairie View on February 7-8. Dr. Alvin I. Thomas, Prairie View president, announced that Reverend Jackson will also keynote the institution's Centennial theme for the month of February, "Moral and Spiritual Values."

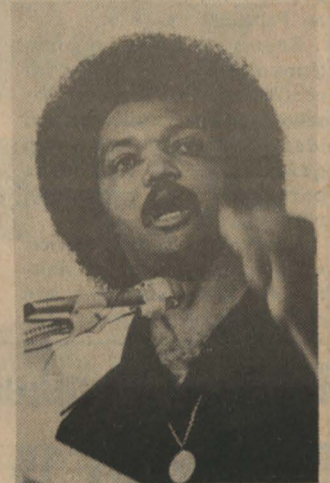
The religious convocation, set for 9:30 a.m. in the university Fieldhouse, is open to the public. Rev. Jackson will also teach a major seminar for

Black History and Culture Month Planning Underway

The annual celebration of Black History and Culture is scheduled throughout the month of February, 1978.

According to Dr. Howard J. Jones, History professor, the Black History Month's celebration will be a part of the university's Centennial Program. All campus departments and organizations are encouraged to participate in sponsoring activities.

The national theme for the month, selected by the Association for the Study of Afro-American Life and History, is "ROOTS, ACHIEVEMENTS AND PROJECTIONS."



JACKSON

the Ministers' group, a part of Prairie View's continuing education program. It is expected that he will give a major thrust to the university's goal of building an All-Faith Chapel on the campus to further religious education at the institution.

Prairie View is beginning the observance of its Centennial Year throughout the 1978 calendar year. The year-round celebration theme is "Prairie View A&M University: Serving People Now and in the Future."

Other guest speakers for the two-day Ministers Conference include Dr. P. L. Rowe, pastor, First Baptist Church, Memphis Tenn.; Bishop George T. Leake, A.M.E. Zion Church, Charlotte, N.C.; Dr. Frederick G. Sampson, Tabernacle Missionary Baptist Church, Detroit, Michigan; Dr. Jerry W. Ford, Bethel A.M.E. Church, San Francisco, Ca.; and Dr. Bennie E. Goodwin, Sr., Interdenominational Theological Center, Church of God in Christ, Atlanta, Georgia.



RETURN FROM LONG HOLIDAY — Students returned to the campus last week to begin Spring Semester studies. Several scenes like the one above were common around the residence hall.



CLASSES START — Teaching and learning situations, like the classroom lecture above, moved into high gear this week. Final late registration closes on January 23.

Baines New Energy Extension Specialist

By Brenda D. Agnes

Mr. Neal Baines joined the Prairie View Extension Program staff, January 1, as Energy Extension Specialist announced Hoover Carden, Director of the Prairie View Cooperative Extension Program:

Mr. Baines will be responsible for developing and implementing an energy conservation program in five Texas counties. The main thrust of the program is to teach and

encourage families to conserve energy.

A native of Coldspring, Texas, he is a 1970 PV graduate in agricultural economics. In 1973, he received his M.S. degree from PV in agricultural education. He has worked as an economic analyst for the California State Department of Human Resources Development and prior to joining the Extension Program was a research specialist and teacher of agricultural economics and rural sociology at Prairie View.



FORMER OFFICIAL VISITS — Retired Dean and development director George L. Smith was entertained by President A. I. Thomas, (left) and members of the Executive Cabinet during his recent return visit to the campus. Now a California resident, Mr. Smith is shown greeting a Palo Alto student whom he encouraged to attend PV: Cabinet Secretary, Mr. H. D. Smith (right) arranged the reception, a luncheon and campus tour.

National Teacher Exams Set for PV on February 18

The National Teacher Examination (NTE) will be given at Prairie View A&M University on February 18, 1978.

Scores from the examinations are used by states for certification of teachers, by school systems for selection and identification of leadership qualities, and by colleges as part of their graduation requirements.

Educational Testing Service, which prepares and administers the tests, says they are designed to measure knowledge

gained from professional and general education and in 26 subject-matter fields.

Bulletins describing registration procedures and containing registration forms may be obtained from Counseling Services Dr. George H. Stafford, Director or directly from the National Teacher Examinations, Education Testing Service, Box 911, Princeton, NJ 08540. The deadline for regular registration is January 26. On-the-spot registration is not permitted.

NAACP Membership Drive Set For January 16 — February 3

The Prairie View NAACP Chapter will be holding a membership campaign from January 16th thru February 3, 1978.

The NAACP was founded in 1909. Since the organization inception, it has fought diligently to secure equal protection and equal justice for all people. One of the battles which was won by the NAACP's legal staff outlawed segregation in educational facilities.

The purpose of the membership campaign are two fold: First, the principal source of

income for projects attempted by the organization and secondly, NAACP seeks to influence public opinion, this can be accomplished easier through the support of the members.

The College Chapter is encouraging full participation, therefore, we have decided to award a plaque to the member who solicits the most memberships. Furthermore, to encourage clubs and organizational involvement—a plaque will be awarded to the club or organization which solicits the most members. The plaques

On Campus Ministry — PV Represented at United Methodist Convocation

Prairie View A&M University was well represented at the United Methodist Convocation on Campus Ministry January 4-6, 1978 held on the campus of Southwestern University in Georgetown, Texas.

The theme was: "Imaging The Church's Mission and Ministry In Higher Education." The convocation consisted of plenary presentations, colleague groups, and special seminars.

The representation from Prairie View included: The director of the Wesley Foundation, the Reverend Darnell L. Walker; members of the local board of directors: The Reverend Norman S. Brown, pastor of the Bethlehem U.M.C. of Hempstead, Texas, the Reverend B. Gail Williams, pastor of the Cypress U.M.C. of Cypress, Texas; Students of Prairie View: Ms. Carrie Moore, President of W. F. on the campus of Prairie View, and Mr. Gregory L. Harvey; and in leadership of the convocation as a principal speaker, Dr. Jack Cross, instructor in the Department of History.

will be awarded at our first Annual Banquet.

The student membership fee is \$2.00 per year. Please set your money aside to assure yourself membership in a national organization.

Thanking you in advance for your support.

Jerry T. Burley,
1st Vice-President

The Wesley Foundation on the campus wishes to minister to all who will avail themselves of the opportunity. Regular meeting for fellowship, inspiration, study, and strengthening is each Wednesday evening, 7:00 p.m. Most meetings will take place from room 206 of the Memorial Student Union Center this spring semester. This ministry is supported by the United Methodist Church, but is open to all students, faculty, and members of the Prairie View family. You can be helped if you avail your self, but without you there will be no ministry. We look forward to meeting and being in ministry with you under the brotherhood of Jesus Christ and the fatherhood of God.

EMPLOYMENT U. S. CENTRAL INTELLIGENCE AGENCY

Professional Opportunities are available for those seniors and graduate students completing work in:

- Computer Science
- Economics
- Electronic Technology
- Engineering (EE, ME, AE)
- Foreign Area Studies
- Foreign Languages (High Proficiency Required)
- Geography
- Information Science
- International Relations
- Mathematics
- Physics
- Political Science

All assignments are in the Washington, D. C. area. Some require foreign travel. Processing procedure requires several months.

Mail resume to: CIA Personnel Representative, Room 520 Federal Bldg., 300 East 8th St., Austin, Texas 78701.

All qualified applicants will be interviewed at an early date.

Security Department

"MARIJUANA LAWS"

There are many controlled substances that are in violation of the Texas Penal Code however the Security Department singled out the Marihuana Laws as a topic because they are more often misinterpreted and taken lightly, also because of the growing number of young people using it (Marhuana) without knowing the pitfalls of its use and possession. We are only going to discuss the possession and use not the manufacture, delivery, sale with the intent to deliver or sell etc. and the possession of over four (4) ounces which come under the felony laws. First look at the classes of misdemeanor and the penalties:

Class of Offense	Possible Penalty
Class A Misdemeanor	(1) A fine not to exceed \$2,000 or (2) Confinement in jail for a term not to exceed one year or (3) Both such fines and imprisonment.
Class B Misdemeanor	(1) A fine not to exceed \$1,000 or (2) Confinement in Jail for a term not to exceed six months or (3) Both such fine or imprisonment.
Class C Misdemeanor	(1) A fine not to exceed \$200.

1. The possession and use of not less than two (2) nor more than four (4) ounces is a class A misdemeanor.

2. The possession and use of less than two (2) ounces is a class B misdemeanor.

3. Normally for possession of one (1) joint is classed as a class C one of two misdemeanor, the pitfall is even if you are busted for smoking or possession of one (1) joint you can be classified as a user. Also on most job applications you are asked if you ever used any narcotics so that one joint may spoil your opportunity to be selected for a job.

If there are any questions concerning the Texas Penal Code concerning controlled substances see Sgt. Burditt, Campus Security.

Next the University Traffic and Parking Laws.

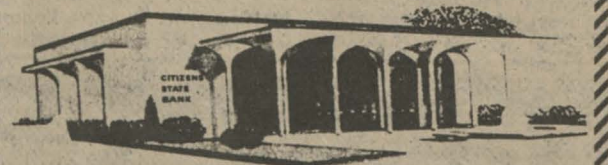
CLEP CENTER OPENS

at PRAIRIE VIEW

College Level Examination Program (CLEP) Center has recently opened at Prairie View A&M University. The Center provides ADVANCED PLACEMENT for students who qualify by passing subject-matter examinations. Students are encouraged to take CLEP test for college credit in subjects they have mastered. For further information contact:

Dr. Carl E. Settles, CLEP Administrator
Counseling Services
New Classroom Building, Room 111
Prairie View A&M University
Prairie View, Texas 77445
(713) 857-2118 or 2116

CITIZENS STATE BANK



MEMBER F. D. I. C.

P. O. Box 575

Phone 826-2431

HEMPSTEAD, TEXAS

PRESCRIPTIONS — DRUGS

Where You Get More Than Just
A Welcome and Good Service

CITY DRUG-HEMPSTEAD

826-2496 W. W. Wilkes, Owner

Schwarz Inc.

"104 Years of Continuous Service"

COMPLETE DEPARTMENT STORE
and
FURNITURE STORE

It's a pleasure doing business with you

Tel. 826-2466 P. O. Box 535
Hempstead, Texas

HEMPSTEAD CLEANERS

DRY CLEANING

Alterations — Laundry Service

Phone 826-3798 Box 893

Hempstead, Texas

1-DAY DRY CLEANING SERVICE

WARD'S PHARMACY

"YOUR REXALL STORE"

Waller County's Most Progressive
and Most Modern Drug Store

Telephone VA 6-2445 Hempstead, Texas

Federal Government Career Day Set for February 16

The Third Annual Federal Government Career Day sponsored by the Division of Career Education and Placement Services, the Texas Gulf Coast Government Recruiting Council, and the Houston Area Office of the United States Civil Service Commission will be held February 16, 1978 in the Memorial Student Center Ballroom from 9:00 a.m. until 4:30 p.m.

There will be approximately 30 city, county, state, and federal agencies recruiting for all majors. Booths will be set up

by the different agencies to explain many of the advantages of a career with the government. Our objective is to maximize our students' opportunities for federal employment. With this in mind, we have made arrangements for on-the-spot registration for the PACE examination.

The Professional and Administrative Career Examination (PACE) is the primary gateway through which college caliber applicants enter into the Federal Civil Service in grades GS-5 and GS-7.

Biology Grad is Supervisor For Lab. Technician Program

Mr. Kermit Martindale, a graduate of the Biology Department is supervisor of the Laboratory Liaison Technician (LLT) Program at Methodist Hospital, Dallas, Texas. Mr. Martindale received his B.S. degree in Biology and did graduate study in Biology at Texas Southern University, Houston, Texas before going to the Armed Services. While in the Army, Mr. Martindale was selected to attend the Medical Technology School at Walter Reed Hospital, Washington, D.C. where he completed requirements to become a

Registered Medical Technologist.

The LLT is responsible for obtaining as quickly as possible all specimens that have been ordered for patients on his assigned units, delivering specimens for proper laboratory tests posting results, and maintaining a daily log of all tests performed on his assigned units.

Kermit Martindale is a native of El Campo, Texas and he is the nephew of Dr. Mattie London, Head of Health and Physical Education Department at Prairie View.

Summer Work-Study-Travel Programs in Africa

During the past 20 years, Operation Crossroads Africa, a non-profit, non-governmental volunteer community development organization, has sent over 5000 American students and faculty to 34 English and French-speaking African countries during the summer to live and work with rural village communities, joining with them in vital self-help projects that involve: Building schools and Health Clinics, Agriculture, Music, Art, Archaeology, Health Education, Journalism and Media, Community Development and organization. This experience provides a brief but intense immersion in African village life and pushes individuals to reconsider basic

standards, attitudes, and beliefs in relation to people with contrasting values and life-styles. Crossroads' Work-Study/Travel Programs serve as a vehicle for making a concrete contribution to community development in Africa and at the same time a rare opportunity for Cross-Cultural Communication and personal growth. Many volunteers arrange to receive academic credit.

As a result of this intensely educational and indelible experience, Crossroads volunteers find that they are helped into professional careers in international relations, higher education, and business.

The application deadline for Crossroads' Summer 1978 Program in February 15, 1978. For more information, contact: Crossroads Africa, Inc., 150-5th Ave., NYC, NY 10011 (Phone: (212) 242-8850), or speak with the local Crossroads

Contact person:

Dr. Carl E. Settles
Counseling Services
New Classroom Bldg. #111
847-2118 or 2116
Monday-Friday 8-5 p.m.

SANDERS
Fabric Care Service

**Your Professional
Launderer and
Dry Cleaners**

826-2406 372-3623
Hempstead Waller

For Rent

**3 Bedroom
Mobile Home
Furnished**

\$150.00 Per Couple

Each extra person \$50.00
Can room up to 5 persons

Free Water

Next Door to
Processing Plant

CONTACT

Charles and Lucy Hurley
P. O. Box 517
Hempstead, Tx. 77445



AG RECRUITING — Dean F. L. Richards welcomes representatives of Elanco Products Company, a division of Eli Lilly, to the College of Agriculture. Dr. Richards is at left, George A. Kitchie (center), and Dr. D. L. Dueringer at right. The three discussed intern sales programs for PV students.

Hempstead-PV Lions Club Sets Annual Program

The Hempstead-PV Lions Club will hold its Annual Founders Day Program on January 22 at 2:30 p.m. in the Greater St. Peter's Baptist church.

The guest speaker for the occasion is Lions District Governor Vernon Carmichael.

Lion members are inviting the general public and all churches, fraternities, sororities and organizations to attend. A. T. Daniel is president, F. E. Bouzer, program chairman and Freddie Kollie, reporter.



XEROX ON CAMPUS

January 25, 1978

Areas of opportunity:

Research, Technology Development, Product Design and Engineering, Test Engineering, Reliability Engineering, Manufacturing/Process Engineering, Industrial Engineering, Production Planning & Control, Quality Control, Field Engineering, Computer Programming, and Sales.

Backgrounds sought:

ME, EE, IE, ChE, Math/Statistics, Physics, Chemistry, Computer Science, Business Administration, and Economics.



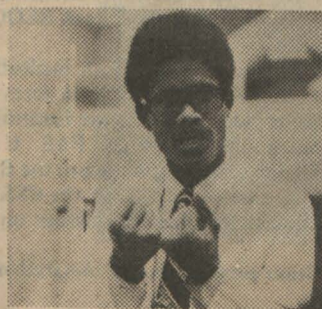
Product involvement:

Xerox copiers and duplicators of unprecedented variety and capabilities; Telecopier transceivers and auxiliary equipment; Xerox computer facsimile transceivers; fast, versatile electronic typing systems; computer graphics, peripherals and services; and a range of other capabilities extending from micrographics to color copying.

Sales positions are in cities throughout the nation. Technical openings are in the Rochester (New York), Dallas, Los Angeles and San Francisco Bay areas. Openings not always available for every discipline in every location. See your Placement Director for latest information and interview arrangements.

Or send your resume to College Relations Manager, Xerox Corporation, P.O. Box 251, Webster, New York 14580

An equal opportunity employer
(male/female)



XEROX

Financial Aid News



ALPHA PROGRAM — National Alpha Phi Alpha Fraternity President James R. Williams (center) of Ohio is shown being welcomed to the PV campus by local undergraduate brothers, Derick King and Lawrence Fryer, Jr. The local graduate chapter, Epsilon Tau Lambda, celebrated its 25th Anniversary during Founder's Day activities on December 11.

Houston Hiring Outlook Optimistic

The employment outlook for the first three months of 1978 in the Houston area remains optimistic, according to a quarterly survey of Houston area businessmen released Friday by Manpower, the world's largest temporary help service.

Daniel L. England, owner of Manpower's Houston office, said, "Manpower's survey of hiring intentions for the first three months of 1978 (January, February, March) shows that 29% of the business firms and public agencies queried expect to add employees while 56% contemplate no change and 13% are considering decreases. However, nearly all of the decreases are expected in

wholesale and retail trade, a sector affected by seasonal declines," England said.

In a similar survey by Manpower taken in September, 56% indicated hiring plans, 42% expected to maintain existing employment levels, and no employers were considering decreases.

The current survey's findings are encouraging because employers in seven out of the ten categories of business activity covered have hiring plans.

The most optimistic projections came from public utilities and transportation firms, and the white collar employers in the fields of finance, insurance and real estate.

Research Funding Up In Texas Schools

Despite spending cuts by the legislature, funding for research at Texas' public colleges and universities increased 12.3 percent during 1976-77, the Coordinating Board of the Texas College and University System said Tuesday.

The board said spending for research totaled \$189.9 million, \$125.6 million going to public senior colleges and the remainder to medical, dental and health-related units.

State Commissioner of Higher Education Dr. Kenneth

Ashworth said the 12.3 percent increase is "surprising" because the legislature's reduction in state spending for organized research.

Ashworth attributed the research funding increase to contributions from the federal government and private sources. Of the \$189.9 million spent on research, he said, only 24.3 percent — \$46 million — came from the state. The federal government contributed 58.4 percent and private sources made up the remainder.

The 1978-79 Basic Grant and Confidential Statement is now available in the Financial Aid Center. This application is unique, it will serve two purposes. Students completing the Financial Aid Form can also use the same application to apply for the Basic Grant (BEOG). Students desiring financial aid are encouraged to secure the 1978-79 combination (FAF and the Basic Grant Application) immediately from the Financial Aid Office.

Several questions which students have asked pertaining to the new form are answered below:

1. *What forms can be used to apply for a Basic Grant for academic year 1978-79?*

A student may file either the CSS Financial Aid Form (FAF), the American College Testing Program Family Financial Statement (FFS), or the Basic Grant Application Form.

2. *Can a student use the FAF to apply only for a Basic Grant?*

Yes. Even so, students should be aware that a Basic Grant can pay for no more than one-half the cost of education. The program was designed to be a foundation of financial assistance on which other forms of aid would be built. Students applying only for a Basic Grant eliminate themselves from other kinds of aid consideration and thereby often limit their education options.

3. *Is there a cost to the student applying for a Basic Grant?*

No. A student who submits an FAF for "BEOG-only" purposes pays no processing fee. Of course, if a student also designates institutions or programs to receive a copy of the FAF and its analysis, a processing fee is charged.

4. *When should a student submit the FAF to the CSS for the 1978-79 year?*

The Financial Aid Form should be submitted to the CSS no earlier than January 1, 1978, and no later than March 15, 1979.

5. *Why is it important to observe the January 1, 1978, beginning filing date?*

In Considering a student for federal campus-based aid (Supplemental Educational Opportunity Grants, National Direct Student Loans, and the College Work-Study Program), aid administrators are required to take into account the student's eligibility for a Basic Grant award. Using the FAF for multiple data entry after January 1, 1978, facilitates this process.

6. *What if a student submits the FAF earlier than January 1, 1978?*

The FAF will be processed by the CSS, but the information submitted on the form cannot be used for determining Basic Grant eligibility. All institutions and programs listed in FAF Item 81 will receive a copy of the FAF and need analysis report. If the student checked "yes" in Item 83, the FAF Acknowledgment will inform him or her that the FAF was submitted too early for Basic Grant application purposes.

7. *Will a student submitting the FAF automatically be considered for a Basic Grant?*

No. The student must check "yes" in FAF Item 83 in order to authorize the CSS to transmit appropriate information to the Basic Grant Program. Obviously, in the instance of a "no" response, no information will be sent to the Basic Grant program. If Item 83 is left blank, the CSS must interpret the response as "no."

8. *If a student applying for a Basic Grant submits the FAF and some other form, what happens?*

The first data record received by the Basic Grant program will be the basis for the Student Eligibility Report (SER) prepared by the program and sent to the student. Any subsequent record will cause the Basic Grant program to send an additional SER, which will carry the information that the initially submitted record is the "official" one.

9. *What if insufficient information is submitted on the FAF?*

Insufficient information is a relative term, but in any instance data transmission for multiple data entry will not be impeded. If there is insufficient information, according to either the CSS or Basic Grant program interpretation of the term, independent follow-ups will occur. The Basic Grant program will seek information through SER, and the CSS will do so through its regular review and follow-up procedures. Once a student receives an SER, all communication about the Basic Grant program should be with the program, not with the CSS.

10. *Why does the FAF ask students to list two choices of institutions for the Basic Grant program?*

Students have option of naming either one or two institutions in FAF Item 83. These names will be sent to the Basic Grant program for use in preparing rosters of Basic Grant applicants for postsecondary institutions throughout the country. Students are in no way committed to attend any institution they list. A Basic Grant SER must be submitted to the institution the student chooses in order to receive an award.

11. *Will a student submitting the FAF receive an Acknowledgment?*

If a student has submitted the FAF for "BEOG-only" purposes, the CSS will not send an Acknowledgment. The student, would of course, receive a Student Eligibility Report from the Basic Grant program. If an SER has not been received within six weeks of submitting an FAF, the student should ask BEOG to look into the matter.

On the other hand, if an FAF is submitted with institutions and/or programs listed in Item 81, an Acknowledgment form will be sent from the CSS. The Acknowledgment lists the institutions and programs the student has designated on the FAF. If the student did not authorize the CSS to send information to the Basic Grant program, but appears to be eligible for a grant, the CSS will inform the student of this by means of a special message on the Acknowledgment.

12. *How will the Basic Grant program notify the student of eligibility?*

The Basic Grant program will send the student a Basic Grant Student Eligibility Report, for applications submitted between January 1, 1978, and March 15, 1979. The SER should be reviewed to be certain that all information on the report is correct. Any

instructions about supplying missing information, verifying particular data, or correcting errors should be carefully followed. If the SER contains a Student Eligibility Index, a computer-printed message will tell the student whether the index makes him or her eligible for a Basic Grant award. The specific amount of the award, however, must be determined by the financial aid administrator at the post-secondary institution the student attends.

13. *If a student initially submits the FAF only for the Basic Grant program, can postsecondary institutions or scholarship or grant programs be added later?*

Yes. But because the student does not receive an Acknowledgment Form that contains an Additional College Request form, a letter must be sent to the CSS providing the following information: name in full as it appeared on the FAF, social security number, birth date, address, and institutions or programs (and code numbers, if available) to which the FAF is to be sent. The appropriate fee — \$4.50 for the first institution and \$2.25 for each additional — should accompany the request.

14. *If a student does not initially authorize the CSS to transmit FAF information to the Basic Grant program, can this be done later?*

No, because of the authorizations involved. The student should submit a new FAF or a Basic Grant Application Form. There is, of course, no cost for using the FAF to apply for a Basic Grant.

15. *If there is a significant change in the student's circumstances after submitting the FAF, what should be done?*

For the Basic Grant program, any of a clearly defined set of unusual circumstances may warrant shifting the year on which eligibility determination is based from the "base year" to the "estimated year." For academic year 1978-79, the base year is 1977; the estimated year is 1978. To report the change in circumstances, the student must submit a Basic Grant Supplemental Form with a Basic Grant Application Form (not an FAF or other multiple data entry form). Among acceptable reasons for shifting the year for which data are collected are death of a parent or spouse, disability, divorce, or extended unemployment of a parent (dependent students) or of the student or spouse (self-supporting students). Basic Grant Application Forms and Supplemental Forms are available from the Basic Grant program.

If the change occurs after the student has decided which college to attend, he/she should notify the college directly. If no decision has been made, the change should be sent to the CSS. If notified, the CSS will forward changes to all colleges and programs listed on the FAF. Such correspondence to the CSS should clearly identify the student (full name, social security number, birth date, address), should give the student's CSS identification number shown on the Acknowledgment form, and should provide specific details of the change being reported (including references to FAF item numbers, if possible).

BEAT THE RUSH . . . APPLY FOR FINANCIAL AID EARLY FOR THE FALL

COSMETIC BOOM

Facial skin care products had a sales volume of \$670 million in 1976, up 17.5 per cent from 1975.

REBELLION HALTED

The United States on April 28, 1965, sent troops to the Dominican Republic to help control a rebellion.

BRANNAN'S
MEATS OF QUALITY

2200 Cherry Waller 372-3639

Marshall Chevrolet-Olds, Inc.

SALES
SERVICE

Your Authorized Chevrolet
and Oldsmobile Dealer

Tel. 826-2411
Hempstead, Texas P. O. Box 983

24-HOUR SELF SERVICE
at
HEMPSTEAD WASHATERIA
TOP LOADING SPEED QUEEN
and
DOUBLE-LOAD PHILCO BENDIX MACHINES
Next Door to Pick & Pay Food Market
Hempstead, Texas
YOUR PATRONAGE APPRECIATED

THE PRAIRIE VIEW PANTHER
Published Bi-Weekly in the Interest of a Greater Prairie View A and M University. The PANTHER serves as the voice of Pantherland.

Prairie View A&M University is open to all, regardless of race, color, religion, or national origin.

- REPORTERS Dwayne Revis, JoAnn Alderson, Matthew Shoyebo
- SPORTS G. C. Pope, Carl Strayhorn (Joe Booker)
- CLERICAL STAFF Shannon Dennis, Stephanie Swain (Gloria Dimas)
- PHOTOGRAPHERS Robert Thomas, Timmy Brown, Ricky Carter (Tom Godwin, Roy Pace)

Any news items, advertising, or matters of interest to THE PANTHER may be presented to the Department of Student Publications, Room 108-112, New Classroom Building Telephone 857-2117. C. A. Wood, Publications Director.

REPRESENTED FOR NATIONAL ADVERTISING BY
National Educational Advertising Services, Inc.
360 Lexington Ave., New York, N. Y. 10017

CASS STUDENT NEWSPAPER ADVERTISING
4001 West Devon Avenue
Chicago, Ill. 60646

To Whom These Greetings Come

Be it known that I, an alumnus and productive person of Prairie View do hereby express my profound interest in the continuation of Prairie View A&M University of Texas as an institution of higher learning. After looking back over 100 years, we are proud of our aged institution of the productivity of its sons and daughters. History is good and tells us a lot, much of which many times we wish not to face as well as much that we admire and cherish. While we celebrate the longevity of our Land Grant College (University) of Prairie View as a producer of productive people, let us not forget that growth is expected along with age.

With the foregoing appraisal, let us look at our present situation and the projected future. After reminiscing history, one may be led to ask the question; "So what?" It is the question that I should like to challenge each of us to whom these greetings come. Since the complex of our country has changed, and is in the process of continual change from much of the past of which we take great pride in our history, it appears that we, the family of Prairie View are faced with great challenges. Just as we met the need of the constituency of the black community of Texas in the far past history, we must meet the needs of our present constituency, be it black or otherwise. The real fact is that we can no longer claim "all" or the "majority" of blacks. Therefore, we are called upon to do far more in regards to curricula, family unity, and the preparation for "completeness" as a productive person. In addition to good academics of secular concerns and studies which is a high accomplishment of Prairie View, I feel that there is an impelling need for the creation of a balanced program so that our "productive people" may reproduce balanced products.

At this juncture, I come to my main thrust, i.e., after 100

years of operation, with a birds eye view of surrounding institutions of equal and greater (quantity) magnitude, it seems to be an impelling imperative that some forms of organized religious emphasis become an integral entity of our institution within the curricula for creditation. That is, there is the need of bringing together the two so long divided (head and heart).

I wish to say far more on this concern, but after having tossed out the concern, I wait for responses from all or either extremes: Fundamentalist — (Radical) Charismatics.

We, the ministers of the United Ministries, are here to be of service to the entire University community having been sponsored by our several denominations. However, this comes primarily from one of the ministers with great feelings and aspirations for the University.

Darnell L. Walker,
Director: Wesley Foundation

Civil Engineers Honor's Club Sponsors Christmas Fund Drive

During the Christmas holidays, the Civil Engineers Honor's club sponsored a Christmas Fund Drive here on campus. The proceeds of the drive were raised to bring more cheer to a needy family in our community.

It is through giving that we reap greater riches other than the material wealth we are so accustomed to. It is one of our purposes to establish effective social poise in the community where we live and work by giving wholeheartedly of ourselves.

I would like to thank the student body, faculty and administration for contributing to the effort.

President, Robert L. Deese

PV Civic Leader In Race for County Commissioner

Dr. W. D. Thompson, a Prairie View A&M graduate and former employee has announced his candidacy for County Commissioner, precinct #2, subject to the Democratic Primary on May 6, 1978.

A former vocational agriculture teacher and educational administrator, Dr. Thompson is presently engaged in property investments and real estate ownership.

He has been active in Prairie View and Waller County Civic and political activities for many years. He served as a delegate to the County and State Conventions of the democratic party and as a member of the Board of Directors of the Waller County Red Cross Chapter. He was elected and served the first mayor of the City of Prairie View and has continued to be in civic programs.



Scenes from Multi-Culture exhibit in Memorial Center.

WHAT'S AN NSA CAREER?

It's different things to different people.

Of course, all employees at the National Security Agency have certain things in common: they are civilian employees of the Department of Defense; they are engaged in technical projects vital to our nation's communications security or a foreign intelligence production mission; and they all enjoy the benefits that accompany Federal employment. However, the differences between our career opportunities are just as interesting as their similarities. For example...

TO THE ELECTRONIC ENGINEER (BS/MS): An NSA career means delving into unique projects which can span every phase of the R&D cycle. An engineer may design, develop, test and manage contracts on communications, recording, and information storage devices and systems whose capacities and speeds are still considered futuristic in most quarters.

TO THE COMPUTER SCIENTIST (BS/MS): It means applying his or her knowledge in a wide range of sub-disciplines such as systems design, systems programming, operating systems, computer applications analysis, and retrieval systems.


TO THE MATHEMATICIAN (MS): A career means defining, formulating, and solving complex communications-related problems. Statistical mathematics, matrix algebra and combinatorial analysis are just a few of the tools applied by the NSA mathematician.

Interested in learning more about the difference in an NSA career? Schedule an interview with us through your Student Placement Office today. If we do not recruit on your campus, send a resume to the address given below.

U.S. citizenship is required.



PANTHERETTES — A few members of the Pantherettes Club are pictured during holiday party at the home of Coach and Mrs. Gilliard (Mrs. Gilliard is standing at left).



**FORD
MERCURY**

**HEMPSTEAD MOTOR
COMPANY**

BILL NICKS
J. C. EVANS
BOB RUNDZIEHER

Hempstead
826-2476

Highway 290
Houston 463-1010

Hempstead
826-2476









NATIONAL SECURITY AGENCY
Attn: M321
Fort George G. Meade, Maryland 20755
An Equal Opportunity Employer m/f.

Sigmas and Zetas Win Top Stepping Award

The men and women of Phi Beta Sigma Fraternity and Zeta Phi Beta Sorority travelled to Houston, Texas on December 16, 1977 to attend a Sigma-Zeta Undergraduate Workshop.

The workshop was held at the Stouffer's Hotel and included Fund Raising for the March of Dimes and discussions on cleaning up Greek steps, recruiting procedures, the pledge period, future service projects and togetherness.

As one of the highlights for entertainment, a Gulf Coast Regional Step-Off was held for the undergraduates. Participants included Sigmas and Zetas from Southern Univer-

sity, North Texas State, Sam Houston State, Stephen F. Austin University, Prairie View A&M, Texas Southern, and Northwestern University.

After three hours of dazzling, fantastic performances, the judges announced the winners. In the fraternity division, the brothers of Delta Theta Chapter, Prairie View A&M, won first place. In the Sorority division the ladies of Omega Gamma Chapter, Prairie View A&M, won second place.

The Sigmas and Zetas of Prairie View are honored to represent this great student body in service as well as performances.

Keebler

Woolfolk on Panel— Texas Conference To Plan State's Library Goals

Dr. George R. Woolfolk, chairman of the department of History at Prairie View A&M, has been named to the advisory committee that will plan the Texas Conference House Conference on Library and Information Services scheduled for September, 1979, in Washington, D.C.

The planning committee, composed of 42 persons across the state, held its first meeting in Austin on January 10-11 to begin plans for the program and determine how the 200 delegates for the Texas Conference will be selected.

Apply for Summer Jobs With National Park Service Now

Application packets are now available for those interested in summer employment with the National Park Service, according to Southwest Regional Director John E. Cook.

"The packets containing application forms and a list of available positions may be obtained by writing to the Employment Office, National Park Service, Southwest Regional Office, P. O. Box 728, Room 109, Santa Fe, N.M. 87501, or by calling 505 988-6427," Cook said.

The summer employment period in NPS areas is between Memorial Day and Labor Day. Requests for applications for summer unskilled laborer (including roads, grounds and trail work), aides, technicians, and park naturalist and ranger positions will be accepted at the Southwest Regional Office or any NPS area through January 15, 1978.

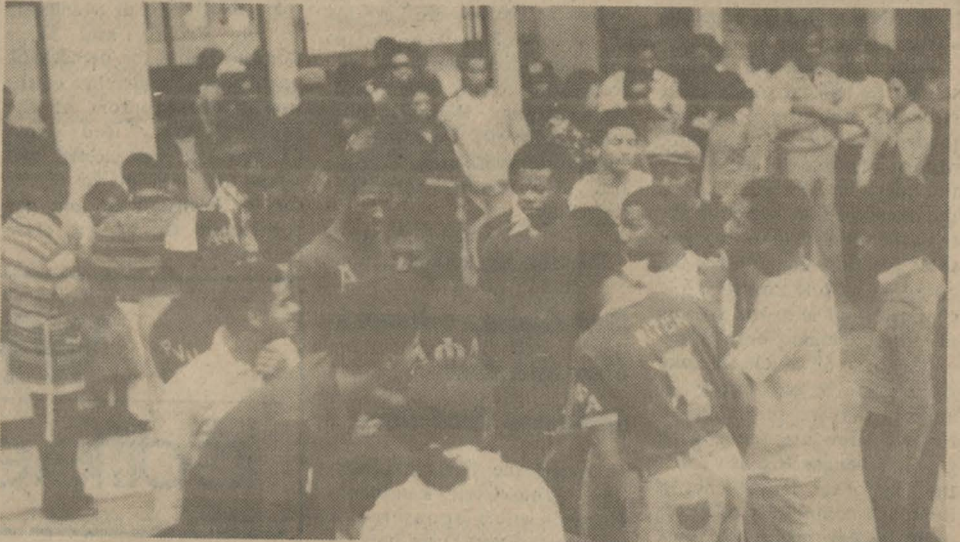
Applicants for any National Park Service position must be U.S. citizens and be at least 18 years old.

Application forms are available in this area at the Panther Office, the Herald TSU, Forward Times and Informer newspapers, Houston.

rolet, Fowlers, Hurley's Meat Plant, NROCT Midshipman Officers, U.S. Marine Corps Reserve, Woolco, Houston, Playhouse Toys, Eric Johnson, Neal Baines, Frank and Jean Pinkerton, Johnnie B. Collins, Mack C. Nelson.



ALPHAS FEATURED DURING DECEMBER ACTIVITIES — Top — Founders Day observed in December. Bottom: Eta Gamma preparing to show.



Alpha Spotlight

The Brothers of the Eta Gamma Chapter of Alpha Phi Alpha Fraternity, Incorporated take this opportunity to salute Brothers Lawrence W. Fryer, Jr., and Waymon Clyde Lemon on their recent initiation into the National Society of Scabbard and Blade, Company H-12. This organization is a National Military Honor Society with 192 Companies across the nation and selects its members from the best Army, Air Force and Navy ROTC students. A student with a 3.0 grade average in Naval/Military Science and is in the top 25 percent of his class is eligible for membership in the society. Brothers Fryer and Lemon were among the 18 members who were initiated into and witnessed the reactivation of the society at Prairie View A&M University at a ceremony held December 3, 1977.



Fryer

Lemon

We salute you on your continued effort in carrying the Banner of Alpha high, with scholarship, manly deeds and love for all mankind.

We would also like to welcome all the students, faculty and staff members back to Prairie View as we begin to Celebrate the 100th Birthday of this great institution.

ROTC News

The Marine Corps personnel of the Naval Reserve Officers Training Corps, Prairie View A&M University wishes to express their sincere appreciation to the following individuals and merchants who contributed to the 1977 Toys for Tots Campaign:

Mrs. Mipa Felton, Jack & Jill Organization, Prairie View, Judge A. M. McCaig, Hempstead Cleaners, Citizen National Bank, Hempstead, Willie Stefka, Guaranty State Bank, Marshall Chevrolet Employees, Mr. and Mrs. Ray Kraft, Walter Western Auto, Danny Marbarry, Mayor, Waller, Super Save, Prairie View, Schwartz Inc., Marshall Chev-

Brother Fryer is a senior with a major in Biology Education. He is the eldest son of Mr. and Mrs. Lawrence Fryer, Sr., of Gonzales, Texas.

Brother Lemon is a Senior Political Science major and was elected to serve as First Lieutenant of the Society for the remainder of the 1977-78 Academic Year. He is the eldest son of Mrs. Norvie Marshall of Houston, Texas.

Upon graduation from Prairie View, Brothers Fryer and Lemon will both receive commissioning in the US Navy and US Marine Corps respectively.

Congratulations Brothers!

COLLEGE POETRY REVIEW

The NATIONAL POETRY PRESS

announces

The closing date for the submission of manuscripts by College Students is **February 15th**

ANY STUDENT attending either junior or senior college is eligible to submit his verse. There is no limitation as to form or theme. Shorter works are preferred because of space limitations.

Each poem must be TYPED or PRINTED on a separate sheet, and must bear the NAME and HOME ADDRESS of the student, and the COLLEGE ADDRESS as well.

MANUSCRIPTS should be sent to the OFFICE OF THE PRESS.

NATIONAL POETRY PRESS

Box 218

Agoura, Ca. 91301

Sigmas —

CONTINUED from Page 1

fellow greeks, faculty and student body to attend and help us celebrate this occasion.

Kenneth Tryels "Keebler"

DON'T INVEST HERE!

Some say the British Post Office, which handles mail and telephone service there, is believed to be the most unsuccessful business operation in the world, losing about \$12 a minute, year 'round.

Rustic Oak

ON U.S. 290
HEMPSTEAD, TEXAS



RESTAURANT



PRAIRIE VIEW A&M UNIVERSITY
EMPLOYEES FEDERAL

credit union

P. O. BOX 2606

PRAIRIE VIEW, TEXAS 77445

A service to the Prairie View Community for over forty years

LOANS: Share Secured 9% Annual Percentage Rate
Real Estate 10% Annual Percentage Rate
Personal 12% Annual Percentage Rate

SHARES: (Savings) 6% Annual Percentage Rate

OUR MOTTO: "Not for Profit

Not for Charity

But for Service"

OFFICE HOURS: Monday thru Friday 3:30-6:30 p.m.

PHONE: (713/ 857-4925)

OFFICE LOCATION: P. V. Alumni House



Barbara Jacket Is Clinic Speaker

Barbara Jacket whose Prairie View Pantherettes track team are Queens of the Cinder, will be one of the guest lecturers at the Second Annual Scholastic Coach US Marine Corps National Track and Field Clinic which will be held on Houston Baptist campus Friday and Saturday, January 20-21.

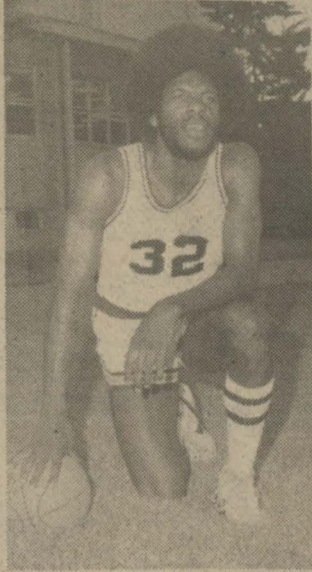
Ms. Jacket's track teams have won seven national and five Southwestern Athletic Conference titles since 1973, will speak on Techniques For the Sprints and Sprint Relays. Debra Sapenter, who was developed by Jacket, was a member of the 1976 Summer Olympic Team.

Talent Showcase For Houston

Finally, a talent showcase for Houston. Starstruck Monday opens Monday night, February 6, 1978 at Sonny Look's Depot, downtown at 212 Milam. Beginning at 7:00 p.m., the evening will bring together entertainers and buyers, agents, talent scouts — both local and national — and the public. The showcase is designed to give local and area talent an opportunity to be highlighted in an attractive setting, in a professional manner.

Auditions for singers, dancers, actors, comedians and novelty acts begin this week. For audition information, please call 681-9766 or 523-6962.

Producers, film producer/director, Ned Bosnick and writer, Kay Maughan have lined up out-of-town scouts and local agents and buyers for the weekly showcase. Houston celebrities will host, beginning February 6 with Houston radio station K101 disc jockey's co-hosting.



Larry Hagan, a sophomore forward-guard will add more fire-powder to the already explosive Panther offense when he becomes eligible the second semester. Hagan is one of the most feared shooters in SWAC...he is from New Orleans...

Panther Club Holds Raffle

The Panther Club is having a raffle to help promote its program of giving an annual award to the outstanding high school football player of the year, at M. C. Williams high school of Houston. The award will be given in honor of "Mark Brown." Mark Brown was a freshman football player, who, on August 22, 1976, had a sickle cell anemia attack and passed away. Mark Brown was a very outstanding freshman football player from M. C. Williams high school of Houston. We the members of the Prairie View A&M University Panther Club would like for the memory of Mark Brown to never be forgotten.

The members of the Panther Club will be selling raffle tickets to finance this annual award. We would like for every student to buy a ticket and not only will you have a chance of winning a prize, but also the satisfaction of helping to present this award. The drawing will be held (ON TIME) during the Prairie View Relays, March 25, 1978, at Blackshear Field. Winners need not be present to win. First prize: \$100.00 Bill; second Prize: AM-FM Radio; third prize: surprise.

Please help the P.V. Panther Club Do this very outstanding thing in honor of the football player that passed away "Mark Brown." Thank you so very much from the entire club.

Ell-Roy Stevenson

STRICKLAND'S VARIETY STORE

Tele. 826-2131

1132 Austin

Hempstead, Texas

When you're cranky about flavor.



PV Cagers in Key SWAC Games

After dropping their opening Southwestern Athletic Conference game at Mississippi Valley, 118-86 last Saturday, the Prairie View Panther basketball team will go up against the SWAC's number three and two ranked teams in must wins on the road this week.

The Panthers 7-3, 0-1, will meet the number three SWAC ranked Jackson State at Jackson Thursday night and will take on Southern University, the number two ranked SWAC team at Baton Rouge, Saturday night.

The Alcorn Braves are picked to win the Southwestern Athletic Conference flag. Prairie View was picked fifth behind Grambling who was picked fourth.

After winning their first six games and scoring a 116 points per contest the Panthers have hit a slump and lost two of their last three games. In their last

five games their scoring average has dropped 99.9 per game, but they are holding the opposition under 90 points per outing.

Dennis Wayne, the Panthers 6-6 senior forward and All America candidate lead the team in scoring with a 25.0 game average. Already this season Wayne has scored 43, 41 and 34 points in a game. He had a season high 18 rebounds in one contest, also. His 9.5 rebound average is second on the team, but his 62.3 field goal shooting is third in the nation.

George walker, 6-2 junior guard (21.4) and George Campbell, 6-3 senior forward (19.3) follow Wayne in scoring. Campbell leads in rebounding with 10.0 per game, while Walker averages 9.0 assists.

The Panthers return home on Tuesday, January 17, where they host rival TSU in the Little Dome in Shoot Out Number 1 at 7:30 p.m.

Outstanding Men of The Panther Club

Many are worthy, but few are chosen, only the finest of athletes become the men who are the "P.C." The Prairie View Panther Club is the oldest campus organization here in Pantherland. It is the best and one of the finest. Over the years the Panthers Club has turned out some fine outstanding men. We the members of the Panther Club would like for you to know some very outstanding men that we are very proud of. We will also tell you some of the things they are doing:

1. Ken Houston, All American, All Pro Safety of the Washington Redskins;
2. George A. Stafford, Ph.D., All American, Director of Admission;
3. Leroy Marion, All American, Dean of Men;
4. Gentry Hornsby, All American Guard, Former P.V. Coach;
5. Cornell Evans, All American Track, Highway Patrolman;
6. Hise Austin, All American Track and Football, Pro Football with Green Bay and Dallas, Senior Fellow, P.V.;
7. John Moore, All American End, Pro Football Houston Oilers;
8. David Kirkpatrick, Ph.D., All American, Associate Professor, Prairie View A&M University;
9. Clifford Gilliard, All S.W.A.C. Football Coach, Prairie View A&M University;
10. Cornelius Cooper, All S.W.A.C. Pro Football Miami Dolphins, Coach at Prairie View A&M University;
11. Willie Davis, Center 1969-1973, 2nd Lt. U.S. Army;
12. Otis Taylor, All American End, Pro Football, Kansas City Chiefs;
13. Clarence Williams, All American, All Pro Line, Atlanta Falcons, Green Bay Packers;
14. Talmadge Sharpe, All American Line Backer (1972);
15. Charles Wright, All American 1952, 1953, and 1954;
16. Clavin Scott, All American Full Back, 1952;
17. Lester Morgan, All S.W.A.C. All Texas Bay City Fireman;
18. David Bohannon, All American Full Back, 1975-76, Houston Oilers, All Texas, All N.A.I.A. District (1975-76);
19. Greg Austin, O.G. A.P. All American B.S., Manager Alexander Hall, All Texas, All N.A.I.A. District;
20. Sam

- Maxie, Q.B. All S.W.A.C. Dallas Bottling Company;
21. John Hunt, D.T., Team Captain 1973-76, Dallas Coach;
 22. Earnest Burke, T.E., 1973-76 B.S. (76) M.A. (78), Manager of Holley Hall;
 23. Charles Baity, O.T. 1973-76, All S.W.A.C.;
 24. Haven Young, D.B. 1973-76, All S.W.A.C.;
 25. Otto Brown, D.B. All S.W.A.C. Pro Football.

The Panther Club has many outstanding members. If they were all listed the list would never end. So we salute all Panthers old and new because they are all great.

Members of the Panther Club:

Travis Weatherspoon, Don Weatherspoon, Charles Weatherspoon, Lloyd Weatherspoon, Edward Williams, Wayland Gay, Horace Alexander, Kenny Avie, Gregory Austin, Kenneth Austin, Charlie Baity, Steve Bartley, Daniel Bennett, David Bohannon, Earnest Burke, Willie Byrd, Willie Barnes, Tommie Coleman, James Cowan, Darrell Cuba, John Derritt, Clarence Farmer, Kenneth Hill, Jessie Horace, Frank Hollis, John Ieans, Kenneth King, Terry Knighton, Melvin LaBat, Montie Lee, Hal Louis, Samuel Myles, Danny Mitchell, Johnny Myles, Steve O'Gilbert, Darrel Sammons, Terrence Simmons, Charles Smith, Larry Wallace, Michael Willis, John Hunt, George Whiteside, Floyd Richardson, Raymond Jones, James Hunt, Anthony King, Alvin Prince, Edward Clark, Ronald Lofton, Matthew Baity, Andrews Winzer, Eugene Scott, Kelvin Newman, Ray Hartsfield, Matthew Teague, Sherina Boyd, Gary Nicholas, Marco Offord, Mangus Mitchell, Derwin Dukes, Reginald Hawkins, Lonnie Louis, Carl Gude, Ell-Roy Stevenson, President.

SUPPORT THE PANTHERS

THE SUMMIT

PRESENTS

"A BASKETBALL SPECTACULAR"

PRAIRIE VIEW A & M

VS

ALCORN A & M

7:00 PM

TEXAS SOUTHERN UNIV.

VS

GRAMBLING

9:00 PM

"IN A SWAC DOUBLE HEADER"

Monday, January 23, 1978

WITH A SPECIAL HALF TIME SHOW

featuring the Prairie View Foxes and the T.S.U. Oceans of Soul Majorettes

Tickets on sale now at The Summit Box Office and all Foley's Ticket Centers. For more information call The Summit - 627-7456

College Drag Racing Competition Set

The fifth annual National College Drag Racing Championship will get underway at 9:00 a.m. Saturday, April 3 at Green Valley Race City in Ft. Worth, Texas. The event is sponsored by the Intramural and Recreation Department

at the University of Texas at Arlington and is for college students *only* from across the nation. The eight divisions (E.T.) are handicapped to make any entry a potential National Champ. For more information call 817-273-2291 or 273-2261.

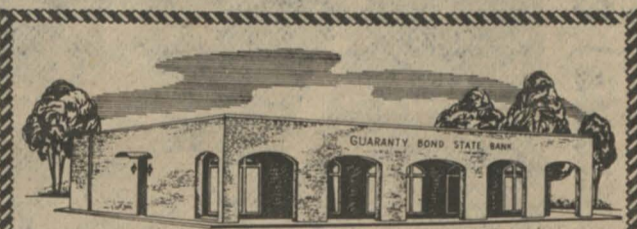
GO PANTHERS

Gianny's

PIZZA-SPAGHETTI
FRIED CHICKEN

DRIVE IN OR CARRY OUT

Hempstead, Texas



GUARANTY BOND STATE BANK

MEMBER F. D. I. C.

Waller, Texas

SUPER-SAVE
Food Market

"IN THE HEART OF THE CITY"

Prairie View, Texas

"Little Dome" Fever (SWAC Action) Coming Up



TSU, Grambling on campus this week. Double-header in Summit on January 23.

**THE PANTHER
PRAIRIE VIEW A&M**

PRAIRIE VIEW A&M

PANTHER

Volume 52, No. 10
January 12-17, 1978

**Our
Beginning**

1878

**AND NOW
WE
WELCOME**

1978

**OUR
CENTENNIAL
YEAR**