

Prairie View A&M University

Digital Commons @PVAMU

---

Football Programs

Football

---

10-2-1999

**Oct 2nd, 1999 - Prairie View A&M vs Grambling State**

Prairie View A&M University

Follow this and additional works at: <https://digitalcommons.pvamu.edu/football-programs>

---

Coca-Cola

PRESENTS THE  
**SOUTHWEST AIRLINES**  
**AL LIPSCOMB**  
**STATE FAIR**  
**CLASSIC**

**PRAIRIE VIEW A&M**  
**vs GRAMBLING STATE**

**SATURDAY ■ OCTOBER 2**  
**THE COTTON BOWL**



Plus a...

**BATTLE**  
*of the*  
**BANDS**

PRAIRIE VIEW A&M'S  
*Marching Storm*

GRAMBLING STATE'S  
*Marching Band*



**SOUTHWEST AIRLINES**  
A SYMBOL OF FREEDOM



GRAMBLING STATE TIGERS

Football



FRIDAYS

PRAIRIEVIEW & M PANTHERS

Coca-Cola Presents The Southwest Airlines Al Lipscomb State Fair Classic

Saturday, October 2, 1999 7pm at the Cotton Bowl



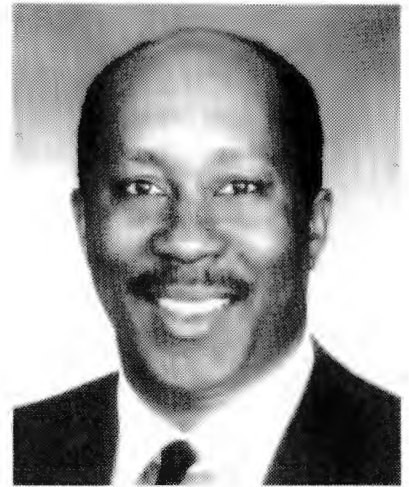
©1999 The Coca-Cola Company. "Coca-Cola," the Contour Bottle design and the Red Disk Icon are trademarks of The Coca-Cola Company.

RONALD KIRK

MAYOR



CITY OF DALLAS



*October 2, 1999*

***WELCOME TO THE  
SOUTHWEST AIRLINES AL LIPSCOMB  
STATE FAIR CLASSIC***

*On behalf of the City of Dallas, it gives me great pleasure to welcome you to the 9th annual Southwest Airlines Al Lipscomb State Fair Classic featuring Grambling State University versus Prairie View A&M University.*

*The Al Lipscomb State Fair Classic is the second largest African American sports gathering in the nation. I applaud you for supporting students through this organized sporting event and encouraging them as they strive for excellence through higher education.*

*Historically Black Colleges and Universities make an extraordinary difference in our community. I encourage you to hold fast to the focus of "**Historically Black Colleges and Universities Strive to Survive - A Challenge for the 21st Century.**"*

*Again, welcome and enjoy the Southwest Airlines Al Lipscomb State Fair Classic!*

*Sincerely,*

*Ronald Kirk  
Mayor*





# A FEW GOOD WOMEN

## SUNDAY NIGHT TV JUST GOT GIRLS

Sure, they're beautiful. But you may not notice when they karate kick you to the ground. Sunday nights this fall, KXTX-39 presents a lineup of action shows with strong, yet sultry female leads. They give the term "knockout" a whole new meaning.

**BELIC HUNTER** 7pm

**AMAZON** 8pm

**DREAM TEAM** 9pm



# Southwestern Bell Is Proud To Be Part Of The 1999 Al Lipscomb State Fair Classic.

We salute all the individuals  
involved with  
this important Texas tradition!

*We also believe that education  
is the key to the future.*

That's why we support programs  
that help students learn and excel.  
Programs that foster their plans...  
encourage their dreams ...  
and build a brighter tomorrow for all.

**Friendly.  
Neighborhood.  
Global.**

 **Southwestern Bell**

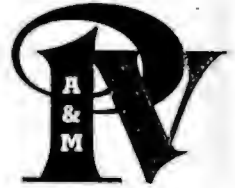


# PRAIRIE VIEW A&M UNIVERSITY

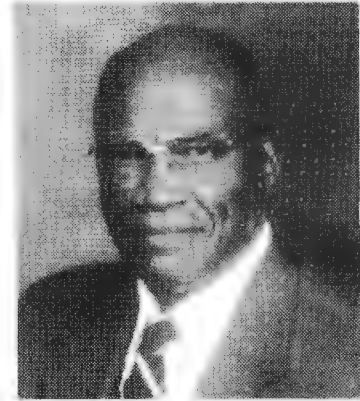
*A Member of The Texas A&M University System*

OFFICE OF THE PRESIDENT  
PRAIRIE VIEW, TEXAS 77446-0188  
TEL. (409) 857-2111 FAX (409) 857-3928

EXCELLENCE IN EDUCATION, RESEARCH, AND SERVICE



October 2, 1999



Greetings!

Welcome to the Annual Al Lipscomb State Fair Classic between two great universities-Prairie View A&M and Grambling State. We look forward to a thrilling football game and an entertaining half-time show. Our two teams take the field tonight with the full understanding that athletics provide an important "window to the world" for our two universities. The purpose of that window is to view the available educational opportunities at PVAMU and GSU. While winning on the athletic field is important, giving our students an opportunity to win the game of life is far more urgent.

Because our athletes sacrifice so much to compete, all will be winners regardless of the score of the game. A special thank you to the precision and musical talent of our marching bands who will perform at half-time and inspire us throughout the game. Our mascots and our cheerleaders bring much enthusiasm to this event and we deeply appreciate them and their energy and talent. To our many fans and friends, thank you for keeping the faith.

On behalf of the students, staff and faculty of Prairie View A&M University, I welcome you once again, and thank you for sharing your evening with us. Join with us in embracing the themes of "sportsmanship" and "fair play" as both teams and both institutions seek to maintain excellence and create opportunities for success, both on this field and on our respective campuses.

Cordially,

Charles A. Hines, Ph.D.  
President





The latest trend  
since 1876.



Bank One is proud  
to support the  
Al Lipscomb  
State Fair Classic

As an active supporter of local events and organizations,  
we salute your contributions to the community.





# ATHLETIC DIRECTOR ... Robert Piper



**ROBERT PIPER**  
Athletic Director  
Grambling State University

It was altogether fitting and proper that Robert Piper returned to Grambling as the new point man for the athletic department. He was named Athletic Director in January of 1997 as only the third athletic director in Grambling's history.

Piper was hired to restore decorum, order and confidence in the athletic department and to guide Grambling through a crucial time

in its history by providing a new sense of direction. A personable, thinking administrator with a strong sense of accountability, he has the intelligence and public demeanor to lead by example. Piper is efficient and effective and harbors no illusions about the task he faces.

Just one and a half years after taking over as GSU's athletic director, Piper's influence has already made a profound impact on Grambling. Under his guidance, Grambling captured the 1997-98 Southwestern Athletic Conference Commissioner's Cup (All Sports Trophy) and has averaged nearly 100 student-athletes per semester on the Honor Roll or President's List. He coordinates the highly-successful Eddie G. Robinson Golf Classic and has helped GSU usher in new coaches for the major sports of football (Doug Williams) and men's basketball (Larry Wright) along with the hiring of several other new coaches.

Sports are his lifeblood. A former basketball letterman at Grambling, he regards athletics as a microcosm of life — full of challenges and goals, full of opportunities, full of setbacks, full of rules and regulations and full of penalties that must be imposed if rules are broken.

Piper is committed to running a clean program and to

uphold the tradition and legacy of Grambling in every respect. He has initiated a positive and aggressive media campaign to repair GSU's athletic department's image. His down-to-earth rapport with people — college officials, students, fans, alumni and the corporate community — will enable him to bring about a climate for success.

He believes in fiscal restraint and bows to the bottom line on the ledger book. He also expects to come out ahead in the standing in athletic events when Grambling is involved. In his judgment, winning and fiscal accountability are compatible.

One of Piper's newest additions to athletics at Grambling State is a newsletter, "The Inner Circle," to keep weekly and monthly media outlets as well as the alumni and GSU faculty and staff informed. He has plans to launch a major marketing campaign to bring more funds and visibility to Grambling athletics.

A variety of experiences prepared Piper for his new position. He has been a teacher and coach, producing championship basketball teams at Western High School in Washington, D.C. He later joined the sales force of the Equitable Life Assurance Society, specializing in business insurance and estate conservation, where he was a multi-million dollar producer and district manager.

In 1985 Piper returned to Grambling as Development Officer and served as the first Executive Director of the Grambling Athletic Foundation. He developed perpetual fundraising programs and secured the largest individual donation in University history, a \$250,000 gift from boxing great Sugar Ray Leonard.

Piper later served as Special Assistant to the President for External Relations, Acting Director of Alumni Affairs and GSU Bayou Classic Coordinator before leaving to become Director of Development at Talladega College in Alabama in 1994.

He holds a Master's degree in Health and Physical Education from the University of Iowa in Iowa City, Iowa.



# ATHLETIC STAFF



**Dinah Anderson**  
Ticket Office



**Stanley Atkins**  
Athletic Coordinator



**Al Dennis**  
Assistant to the A.D.



**Wilbert Ellis**  
Associate A.D.



**Peggy Ethridge**  
Academic Enhancement



**Ruby Franklin**  
Ticket Office



**Maggie Gibson**  
Assistant to the A.D.



**Leonard Griffin**  
Strength Coach



**A. Lane Howell**  
Compliance Coordinator



**Vanessa Johnson**  
Softball Coach  
Assistant to A.D.



**Barbara Lewis**  
Bowling Coach  
Assistant Track Coach



**David Lewis**  
Faculty Representative



**Bertram Lovell**  
Track Coach



**Jackie Newsome**  
Football Secretary



**Frederick Payne**  
Volleyball Coach  
Assistant Softball Coach



**David Ponton**  
Women's  
Basketball Coach



**Bertha Roberts**  
A.D.'s Secretary



**Patricia Simmons**  
Athletic Secretary



**Larry Wright**  
Men's  
Basketball Coach



**Stanley Lewis**  
Director of  
Sports Information

# GSU HEAD COACH DOUG WILLIAMS



**Doug replaced the legendary Eddie Robinson after the 1997 season.**

History was made in 1998 when Doug Williams replaced legendary Coach Eddie Robinson and became only the second man since 1941 to head one of the most prestigious football programs in the country. Doug was a natural for the job, having played under Robinson during the "glory" years. Williams, the most prolific quarterback in the star-infested Grambling football history, brought youth, vitality, intelligence, determination and experience to Grambling. Moreover, Doug brought a love for Grambling that could not be imported, it could only be infiltrated by a "die hard" Tiger. Doug dreamed of coaching at Grambling after his remarkable All-America college career and long before his Super Bowl MVP career had ended.

Immediate changes, including an exciting new offense, has rejuvenated Grambling followers all over the world. Doug's 1998 Tigers finished strong in the tough Southwestern Athletic Conference recording a 4-4 league mark. His team's 5-6 overall record was the best in three seasons at GSU. Gramblinites are excited about what Doug will bring to the field in 1999. His 1999 Tigers will also be moving into a new field house at Robinson Stadium. It also appears

that Doug plans to rebuild the GSU program by adding tougher opponents from Division I-A. Doug has brought new excitement and renewed school spirit to Tiger Land.

As a young boy growing up in the 1960s South, Doug Williams could only dream of a day he might quarterback a NFL team to a Super Bowl. It was a time when black men and women gave their lives just to achieve basic equality. But to imagine a black man as a leader of champions was only a mountain top vision in the minds of men like Martin Luther King. Doug Williams would make this vision his story.



**Doug Williams has always been a winner. He is already adding to the crowded GSU trophy cases.**





## ASSISTANT COACHES



### **MELVIN SPEARS — Offensive Coordinator**

Spears will be entering his second season as Grambling's offensive coordinator. He joined the Tiger family after serving three years as assistant head football coach/defensive coordinator at Morgan State, where in 1997 he developed one of the top defensive units in Division I-AA. The Clinton, Louisiana native previously served Casa Grande High School in Casa Grande, Arizona as assistant head coach and defensive coordinator while also serving as the director of the alternative school. Spears, a former quarterback/wide receiver at Alcorn State University, earned his Bachelor's degree in Computer Science from Alcorn. He earned a Master's degree in Administrative Leadership from Northern Arizona University. Prior to joining Morgan State he served as a software quality manager and design engineer. Spears is the father of Sean, Seana and Kulmoris.



### **TODD BOWLES — Defensive Coordinator/Defensive Backs**

Bowles will be in his second season as defensive coordinator/defensive backs coach with the Tigers. Previously he served Morehouse College as defensive coordinator/defensive backs coach under head coach Doug Williwams. The Elizabeth, New Jersey native is a 1986 graduate of Temple University where he achieved All-American status as a defensive back. Bowles was the starting free safety on the 1998 Washington Redskins Super Bowl Championship team, and in 1989 was named the team's defensive MVP. He played for the San Francisco 49ers from 1990-91 before retiring from the Redskins in 1993. Bowles has also scouted for the Super Bowl Champion Green Bay Packers.



### **TYRONE McGRIFF — Offensive Line**

McGriff will be entering his second season as the Tiger's offensive line coach. Prior to Grambling, McGriff's most recent stint was as head coach at Dillard High School in Fort Lauderdale, Florida. He has served as head coach at Fort Lauderdale High School and interim head coach at Bethune-Cookman College. McGriff has also served as assistant coach at Bethune-Cookman College, Florida A&M and Tennessee State University. The Florida A&M graduate reached All-American status as an offensive lineman during his career with the Rattlers. He went on to enjoy a professional career with the Pittsburgh Steelers (1980-83) and later with the United States Football League's Michigan Panthers and Memphis Showboats. McGriff is married to the former Barbara Rollins and is the father of Tyrone Jr. and April.



### **SAMMY WHITE — Receivers Coach**

White will be entering his second season as the Tigers receivers coach. A graduate of Grambling, White received All-SWAC and All-American honors as a receiver after scoring 17 touchdowns, and leading the Tigers with 37 catches for 802 yards. The Monroe, Louisiana native went on to enjoy an 11-year career with the Minnesota Vikings. A three-time All-Pro selection, White was selected as a member of the Viking's 25th Anniversary team. His career was highlighted by an 8-yard scoring reception against the Oakland Raiders in Super Bowl XI. White's son, Sammy III (Tre) is a freshman on the Tiger football team, while daughter Samantha is a freshman on the Lady Tigers basketball team. White is married to the former Penny Fortner.

# ASSISTANT COACHES



## **HEISHMA NORTHERN — Running Backs/Special Teams**

Northern will be entering his second season as a member of the Tigers staff. No stranger to the SWAC, Northern was a part of two National Championship football teams at Southern University and received All-SWAC honors at defensive back. The Baton Rouge, Louisiana native previously held coaching stints at Morehouse College and at Glen Oaks High School in Baton Rouge. In 1996 Northern received his Bachelor's degree in Math Education. His brother, Gabe, currently plays defensive line for the Buffalo Bills.



## **MATTHEW REED — Quarterback Coach**

Reed will be entering his eighth year as the Tigers quarterback coach. On the gridiron, the Grambling State graduate received All-SWAC and All-American honors and in 1972 led the Tigers to the Black College Championship. The Monroe, Louisiana native has served as assistant coach at Jonesboro-Hodge High School (Jonesboro, Louisiana) and as a graduate assistant at Grambling. Reed attended several NFL camps, enjoyed a three year career in the Canadian Football League and a four-year stint in the World Football League, where he was a member of a championship team. He is married to the former Anna Edward and has three children: Ashley, Misty and Norman.



## **ERNEST STERLING — Defensive Line**

If "with experience comes wisdom," then the Tigers can look forward to a wealth of knowledge from defensive line coach Ernest Sterling. The Grambling State graduate will be entering his 26th season as a member of the Tiger coaching staff. Sterling enjoyed a successful college career at Grambling which gave way to an NFL career with the Dallas Cowboys. His son, Patrick, played basketball for the Tigers, while son Ernest played defensive line on the football team.



## **MICHAEL ROACH — Linebackers**

Roach will be entering his second season as the Tigers linebacker coach. The Baton Rouge, Louisiana native has had previous coaching stints at Southern University Lab High School (Baton Rouge), Morehouse College, Southern University and Glen Oaks (Baton Rouge). A graduate of Southern University, Roach has quickly made a name for himself amongst Louisiana coaches. Having twice been named Coach of the Year, Roach guided his Southern Lab Kittens to the 1-A state title. Roach is married to the former Nancy Ventress and has two sons, Michael Ventress and Malcolm Ventress.







# FOOTBALL SUPPORT STAFF



**LESLIE "CHUCK" DAWSON**  
**Equipment Manager**

Dawson, now in his 20th season with the Tigers, is the man behind the scenes who keeps the Tigers looking good and ready for battle. He has the responsibility of purchasing, cleaning, repairing and issuing all athletic equipment for GSU's nationwide road show.

He also supervises a student staff. Dawson is a graduate of Park College in Kansas City, Missouri.



**RICHARD PAUL**  
**Football Operations**  
**Manager/Field Supervisor**

Paul begins his eighth season on the Grambling staff. A 1974 graduate of Grambling, Paul was a standout fullback and kicker for Coach Eddie Robinson's Tigers in the early 1970s. He also served as a graduate assistant football coach

at Grambling for two years. He is the man called on to do any number of tasks for the entire department because of his dependability.



**LEONARD GRIFFIN**  
**Strength Coach**

The former Grambling and Kansas City Chiefs defensive lineman returns for his third season on the Grambling staff. He was an All-SWAC performer for Grambling in 1994 and went on to play for the Chiefs from 1986-1993. He is responsible for supervising and

teaching weight training techniques and conditioning of all GSU athletes.



**Dawson keeps the Tigers looking good.**



**RICKY McCALL**  
**Head Sports Therapist/**  
**Trainer**

McCall joined the GSU staff in 1990 and has been in the profession since the late 1970s. A former student trainer at Grambling, McCall interned with the Dallas Cowboys. A native of Delhi, Louisiana, he continues to bring

modern methods and techniques to GSU. He completed his degree in sports medicine at the U.S. Sports Academy in 1990. He also holds a master's degree in Sports Administration from Grambling. He is EMT-certified and is also certified with the National Trainers Association in sports medicine and with the Louisiana Athletic Trainers Association. His goal is to make Grambling a training center for prospective sports therapists and trainers.



**JESSICA ROBINSON**  
**Sports Therapist Assistant**

Robinson recently became a Certified Athletic Trainer by the Louisiana State Board of Medical Examiners, one of the first certified African-American female trainers in the State of Louisiana. She is a 1994 GSU Biology graduate. She won several awards while a student

trainer from 1991-94 at Grambling where she mainly worked with the track and field programs. A native of Columbus, Georgia, Robinson received her master's degree from the U.S. Sports Academy of Sports Medicine in July of 1996. She has been officially on the GSU staff since August 1996. She is currently working toward her national certification.



**PATRICIA TAYLOR**  
**Assistant Trainer**

Taylor, a native of Baldwinsville, New York, joined the GSU staff in the Summer of 1996. She holds a master's degree in athletic training from Old Dominion University and is nationally and state certified as an athletic trainer. Taylor previously worked as an assistant athletic

trainer at the United States Military in West Point, New York in charge of women's athletics. She recently volunteered for two weeks at the United States Olympic Training Center in Colorado Springs, Colorado.

# GRAMBLING STATE TIGERS



COACH DOUG WILLIAMS



6 Byron Addison DB



30 Raul Alleyne WR



71 Wendell Alvin OT



1 Scotty Anderson WR



40 Jason Arrington FB



2 Frank Bailey RB



26 Rodney Beaudion FB



79 Corey Bemby OL



7 Marques Benton DB



72 Jared Beverly DT



95 Allen Brice DT



45 Kevin Brooks RB



31 Vyron Brown RB



18 Lajun "Pete" Burks QB



49 Larmot Burton LB



20 Robert Butler LB



89 Fred Cagins TE



34 Joe Christopher RB



85 Chris Cottonham TE



75 Cedric Culberson OL



73 Edwin Dearman DT



87 Anthony Dixon WR



8 Terrance Dukes LB



43 Willie Evans LB



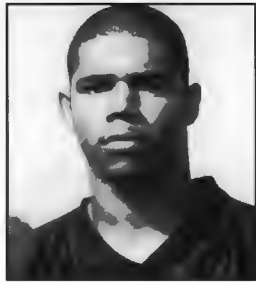
97 Walter Fall DE



5 Ivery Gaskins WR



76 Jimmie Giles OL



15 Michael Grant DB



25 Shawn Gray DB



47 George Guidry LB



13 Adrian Hairston P/PK



59 Demorrio Hamilton LB



19 Lionel Hayes QB



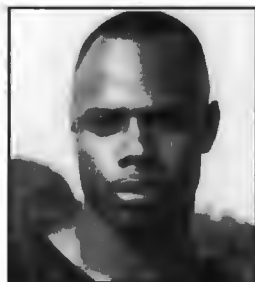
23 Carlos Hicks DB



83 Chris Highshaw WR



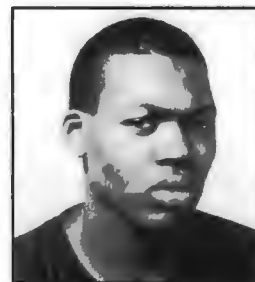
41 Quentin Hogg RB



48 Bobby Hopkins WR



78 Freddie Hostler DL



17 Randy Hymes QB



69 Phillip Isaac OL



37 Avery Jackson DB



63 Brandon James OL



86 Gershone Jessie TE



77 Ananias Johnson DL



55 Ronald Johnson LB





81 B'Jay Jones WR



46 Reginald Jones FB



91 Seneca Knight DL



94 Antwan Lawrence DE



62 Frank Livingston OL



80 William Loyd WR



11 Travis Massey CB



14 Micah Mays QB



57 Jason McSwain LB



50 Larry Metevia C



58 Timothy Morris LB



10 Gary Morrison QB



98 Dante Newell DL



32 Kwency Norman WR



70 Kenneth Ogletree OL



3 Calvin Pearson DB



92 Herbert Pickens DL



96 Brian Pierre DL



82 Rasheed Rahan TE



38 Denmark Reed DB



44 Lawrence Richmond PK



52 Terry Riley C



56 Alexis Robinson LB



99 Richard Scott DL



90 Antoine Smith LB



84 Charles Smith WR



51 Kori Smith OL



65 Marcus Smith OL



4 Calvin Spears DB



88 Ellis Spears WR



21 Marlon Taylor DB



54 Robert Taylor LB



93 Lonnie Walker DE



36 Franklin Washington FB



28 Levi Washington WR



39 Keith Weatherspoon PK/P



9 Trey White RB



53 Scott Wicker LB



16 Marlon Williams DB



24 Walter Williams RB



42 Michael Young RB



27 Chris Clark DB



**GRAMBLING LADY TIGERS**  
Tentative 1999-2000 BASKETBALL SCHEDULE

DATE	OPPONENT		SITE	TIME
NOV. 22, 1999	PAUL QUINN UNIVERSITY		GRAMBLING, LA	5:30
Nov. 26-28	Univ. of Hawaii Tourney		Honolulu, Hawaii	TBA
DEC. 1	TEXAS PAN AMERICAN		GRAMBLING, LA	7:00
Dec. 3	Univ. of Southern Mississippi		Hattisburg, MS	TBA
Dec. 11	Northeast University	(DH)	Monroe, LA (Civic Ctr.)	5:30
Dec. 17-18	Georgia State Tourney (GSU/Prairie View/South Carolina)		Atlanta, GA	TBA
DEC. 20	*Alabama State Univ.	(DH)	GRAMBLING, LA	5:30
DEC. 22	ALABAMA A & M UNIV	(DH)	GRAMBLING, LA	5:30
Jan. 3	*Alcorn State University	(DH)	Lorman, MS	5:30
Jan. 5	*Southern University (B. R.)	(DH)	Baton Rouge, LA	5:30
IAN. 8, 2000	*PRAIRIE VIEW A & M	(DH)	GRAMBLING, LA	5:30
IAN. 10	*TEXAS SOUTHERN UNIV.	(DH)	GRAMBLING, LA	5:30
Jan. 15	*Jackson State Univ.	(DH)	Jackson, MS	5:30
Jan. 22	*Univ. of Arkansas-Pine Bluff	(DH)	Pine Bluff, AR	5:30
Jan. 24	*Mississippi Valley	(DH)	Itta Bena, MS	5:30
IAN. 29	*SOUTHERN UNIV. (B.R.)	(DH)	GRAMBLING, LA	5:30
IAN. 31	*ALCORN STATE UNIV.	(DH)	GRAMBLING, LA	5:30
Feb. 5	*Prairie View A & M Univ.	(DH)	Prairie View, TX	5:30
Feb. 7	*Texas Southern Univ.	(DH)	Houston TX	5:30
FEB. 12	*JACKSON STATE UNIV	(DH)	GRAMBLING, LA	5:30
FEB. 19	*UNIV. OF ARK. PINE BLUFF	(DH)	GRAMBLING, LA	5:30
FEB. 21	*MISSISSIPPI VALLEY	(DH)	GRAMBLING, LA	5:30
Feb. 26	*Alabama State Univ.	(DH)	Montgomery, AL	5:30
Feb. 28	*Alabama A & M Univ.	(DH)	Huntsville, AL	5:30
MAR. 9-11	SWAC TOURNAMENT		TBA	TBA

\* Denotes SWAC Games

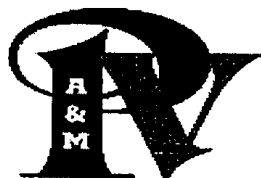
(DH) Denotes Doubleheaders



# 1999 PRAIRIE VIEW A&M UNIVERSITY



No	Name	Pos	Ht	Wt	Cl	Hometown (High School/JC)	No	Name	Pos	Ht	Wt	Cl	Hometown (High School/JC)
	DeMarcus Peterson	WR	5-7	156	Sr.	Houston, TX (Waltrip)	45	Reginald Finister	RB	6-2	203	Fr	Livingston, TX (Livingston)
2	DeMelvin Kelley	RB	5-9	189	Jr.	Houston, TX (Sterling)	47	Lee Jones	LB	5-10	232	Jr.	Patterson, TX (Royal)
3	Bobby Scott	LB	5-11	211	Sr.	Pineland, TX (West Sabine)	48	Jerome Roberts	FB	5-10	244	Fr.	Cleveland, TX (Cleveland)
4	Bobby Perry	DB	6-3	183	So	Miami, FL (South Dade)	49	Jarian Veazie	DB	5-10	171	Fr.	Houston< TX (Waltrip)
5	Anthony Carr	DB	5-9	175	Jr.	Houston, TX (J. Frank Dobic)	50	Corey Leday	LB	5-9	218	So.	Houston, TX (Elkins)
6	Marcus Ballard	WR	6-4	191	So	Miami, FL (South Dade)	51	Brandon Glover	LB	5-9	209	Jr.	Compton, CA (LA Southwest)
7	Robert Destin	DB	5-8	185	Sr.	Crosby, TX (Crosby)	52	Wayne Ingram	OL	6-2	280	Sr.	DeSoto, TX (DeSoto)
8	Josh Barnes	QB	5-9	170	Sr.	San Antonio, TX (East Central)	55	Michael Wiggins	DL	5-10	217	Jr	Houston, TX (Yates)
9	Rory Owens	TE	6-2	221	Sr.	Dallas, TX (Kimball)	56	Courtney Miller	LB	6-1	232	Jr.	Houston, TX (Jones)
10	Reginald Solomon	DB	5-11	186	So	Houston, TX (Worthing)	57	Jesse Allen	OL	6-0	315	Fr.	Dallas, TX (A. Maceo Smith)
11	Andrew Tolbert	LB	6-0	231	Jr.	San Antonio, TX (Marshall)	59	DeMarcus Grayson	DL	6-0	289	Jr	Oklahoma City, OK (Douglass)
12	Jamaal Foster	QB	6-1	202	So	Houston, TX (Elkins)	61	Schredrick Houston	OL	6-2	303	Jr	Houston, TX (Yates)
13	Chris Dailey	P/K	6-3	198	Fr.	Richmond, TX (B. F. Terry)	62	Lionel Carter	OL	6-1	280	Fr	Houston, TX (Farr)
15	Jarrold Franklin	P/K	5-9	180	Jr.	Sulphur Springs, TX (Sulphur Springs)	63	Robert Humphrey	DL	5-11	275	Jr.	Houston, TX (Madison)
16	Alvin Steele	DB	5-10	190	Jr.	Houston, TX (Wheatley)	64	James Walker	OL	5-10	341	Jr	Houston, TX (Yates)
17	DaMarco King	QB	5-11	213	So.	San Antonio, TX (East Central)	65	Elliot Gilliam	OL	6-3	310	Fr	San Antonio, TX (Holmes)
18	Quincy Fuller	DB	6-0	175	Sr.	Houston, TX (Aldine)	67	Eian Preston	OL	6-2	322	Sr.	West Texas City, TX (LaMarque)
19	Tony Barnes	WR	5-9	153	So	San Antonio, TX (East Central)	69	Quenten Taylor	OL	5-10	336	Fr.	Houston, TX (Waltrip)
20	Ahmad McKinney	WR	5-10	175	Jr	Mineral Wells, TX (Mineral Wells)	71	Donald Haskins	DL	6-1	270	So	Hankamer, TX (Annahuac)
21	Damon Judge	QB	5-11	212	Sr.	Barret Station, TX (Crosby)	72	Antwan McKinney	OL	6-1	290	Fr	Miami, FL (Carol City)
22	Deontay Wilson	WR	5-7	151	So	Miami, FL (Carol City)	73	Mionell Diamond	OL	6-1	318	Jr	Houston< TX (Scarabough)
23	Corey Taylor	DB	5-6	172	Sr	Fort Worth, TX (O. D. Wyatt)	74	Jason Vanee	OL	6-2	285	Sr	Houston, TX (Smiley)
24	Keyian Williams	DB	5-8	192	Jr.	Dickinson, TX (Dickinson)	77	Jarrold Cummings	OL	6-3	329	Fr.	Miami, FL (Northwestern)
25	James Smith	DB	6-2	198	So	Mesquite, TX (Poteet)	78	Eric Pommier	OL	6-1	316	Sr	Girard, KS (Independence CC)
26	Terrell Carmon	DB	5-10	166	Fr	Houston, TX (Elkins)	79	Chris Fasano	DL	6-3	303	Sr.	Pueblo, CO (Independence CC)
27	Cory Hubert	DB	5-6	157	Fr.	Houston, TX (B. T. Washington)	80	Gardner Shivers	TE	6-1	242	So	Caldwell, TX (Caldwell)
29	Michael Conley	DB	5-10	169	Sr.	Houston, TX (Wheatley)	81	Jeremy Woods	WR	6-0	175	So	Baytown, TX (Baytown)
30	Carlan White	DB	5-9	157	Fr.	Miami, FL (Northwestern)	82	Deshon Baker	WR	5-9	166	So	Houston, TX (North Brook)
31	Damien Terry	TB	5-9	191	So.	Houston, TX (Madison)	83	DeJuan Daniels	TE	6-2	258	Jr	Houston, TX (Madison)
32	John Danley	LB	6-0	260	Sr.	Greenville, MS (Miss. Delta CC)	84	Lewis Edmonson	WR	6-1	184	Fr	Caldwell, TX (Caldwell)
33	Kevin Bell	RB	5-6	153	Jr.	Dickinson, TX (Dickinson)	85	Karim Toney	WR	5-10	175	Fr.	Oakland, CA (Fremont)
34	Damon Bankston	FB	5-11	225	Fr.	Houston, TX (Bellaire)	86	McKinley Ellis	WR	5-10	160	So.	Fort Worth, TX (Fossil Ridge)
35	Brent Thibeaux	DB	5-8	168	Fr.	Oakland, CA (Fremont)	87	Charles Tompkins	TE	6-2	243	So.	Hempstead, TX (Hempstead)
37	Ronald Kimble	TB	5-8	190	Fr.	Houston, TX (Mt. Carmel)	89	Alvin Mitchell	WR	5-10	165	Fr	Missouri City, TX (Elkins)
38	Steven Garner	LB	5-11	237	Sr.	Houston, TX (North Shore)	91	Dan Morgan	DE	6-4	252	Sr.	Converse, TX (Judson)
39	Dezra Shaw	RB	5-11	256	Sr.	Houston, TX (North Shore)	93	Heiser Shields	DL	6-1	263	Sr.	Dallas, TX (Carter)
40	Aaron Spivey-Sorrell	LB	5-9	196	Jr.	Austin, TX (Reagan)	94	Michael Henderson	DL	6-4	255	Jr	Killeen, TX (Ellison)
41	Kenric Harvey	DE	6-0	224	Jr.	Houston, TX (Worthing)	96	Titus Gunter	DL	5-11	269	Fr	Missouri City, TX (Dulles)
42	Travis Worthen	LB	5-10	244	Fr.	Miami, FL (Northwestern)	98	Kelley Lee	DE	5-10	246	Fr.	Dayton, TX (Cleveland)
43	Cedric Costly	FB	5-10	254	Fr.	Killeen, TX (Killeen Ellis)	99	Antonio Scott	DL	6-0	276	Sr.	Greenville, MS (Miss. Delta CC)



# 1999 GRAMBLING STATE UNIVERSITY TIGERS



<u>NO</u>	<u>PLAYER</u>	<u>POS</u>	<u>HT</u>	<u>WT</u>	<u>CL</u>	<u>HOMETOWN (FORMER SCHOOL)</u>	<u>NO</u>	<u>PLAYER</u>	<u>POS</u>	<u>HT</u>	<u>WT</u>	<u>CL</u>	<u>HOMETOWN (FORMER SCHOOL)</u>
1	Scatty Anderson	WR	6-3	180	Jr	Jonesboro, LA (Jonesboro-Hodge HS)	59	Demorrio Hamilton	LB	5-11	195	Sr	Tallulah, LA (McColl HS)
2	Frank Bailey	RB	5-7	175	Sr	Atlanta, GA (Alonza A. Crim HS)	62	Frank Livingston	OL	6-6	300	Jr	Little Rock, AR (Fair HS)
3	Kolvin Pearson	DB	5-10	190	So	Town Creek, AL (Hazlewood HS/Marehouse College)	63	Brandon James	OL	6-3	280	Fr	Grambling, LA (Ruston HS)
4	Calvin Spears	DB	6-0	190	Sa	Baton Rouge, LA (Istrouma HS)	65	Marcus Smith	OL	6-2	330	Jr	Pine Bluff, AR (Pine Bluff HS)
5	Ivery Gaskins	WR	6-0	190	Sa	West Palm Beach, FL (Cardinal Newman HS)	66	Kevin Thomas	OL	6-1	260	So	Baton Rouge, LA (Southern Lab HS)
6	Byron Addison	DB	5-9	180	Jr	New Orleans, LA (Carver HS)	69	Phillip Isoac	OL	6-0	255	Fr	Eunice, LA (Eunice HS)
7	Morques Benton	DB	6-1	190	Sr	Decatur, GA (SW DeKalb HS)	70	Kenneth Ogletree	OL	6-3	275	Fr	Birmingham, AL (Ensley HS)
8	Terrance Dukes	LB	6-2	220	So	Lithonia, GA (Lithonia HS)	71	Wendell Alvin	OT	6-4	290	Fr	Rivero Beach, FL (Sun Coast HS)
9	Trey White	RB	6-1	210	Fr	Monroe, LA (Ouachita HS)	72	Jared Beverly	DT	6-2	270	Fr	Baton Rouge, LA (Capitol HS)
10	Gary Marrison	QB	6-2	180	So	Baton Rouge, LA (Central HS)	73	Edwin Dearmon	DT	6-3	280	Fr	Houston, TX (Eisenhower HS)
11	Travis Mossey	CB	5-10	185	Fr	Brunswick, GA (Brunswick HS)	74	Horace Williams	OL	6-3	300	Sa	New Orleans, LA (St. Augustine HS)
13	Adrian Hairston	P/PK	6-0	190	Sr	Birmingham, AL (Parker HS)	75	Cedric Culberson	OL	6-2	255	Fr	Monroe, LA (Ouachita HS)
14	Micah Mays	QB	6-3	215	So	W. Palm Beach, FL (Lakes HS/Morehouse College)	76	Jimmie Giles	OL	6-3	290	Sr	Tampa, FL (Tampa Catholic HS)
15	Michael Grant	DB	6-0	200	So	Columbus, GA (Shaw HS)	77	Anonias Johnson	DL	6-2	300	Jr	New Iberia, LA (New Iberia HS)
16	Morlon Williams	DB	6-0	195	Jr	Baton Rouge, LA (Southern Lab HS/NLU)	78	Freddie Hostler	DL	6-3	330	Jr	Pine Bluff, AR (Pine Bluff HS)
17	Randy Hymes	QB	6-4	200	So	Houston, TX (Hitchcack HS)	79	Corey Bembry	OL	6-8	350	Sr	Edenton, NC (Holmes HS)
18	Lajun "Pete" Burks	QB	6-2	195	Sr	Hauma, LA (Terrebonne HS/U. of Arkansas)	80	Joseph Williams	WR	6-0	180	Sr	Ontaria, CA (Cheffey HS)
19	Lionel Hoyes	QB	6-4	230	Sr	Baton Rouge, LA (Istrouma HS/Southern U.)	81	B'Jay Jones	WR	6-3	200	Sa	Vollejo, CA (Vollejo HS)
20	Robert Butler	LB	6-2	205	Jr	New Iberia, LA (New Iberia HS)	82	Rosheed Rashan	TE	6-5	240	Jr	Panama, CA (Garey HS)
21	Marlon Taylor	DB	5-10	185	Sr	Phenix City, AL (Central HS/Auburn U)	83	Chris Highshaw	WR	6-4	180	So	Monroe, LA (Carroll HS)
23	Carlos Hicks	DB	5-11	178	So	Jonesboro, LA (Jonesboro-Hodge HS)	84	Charles Smith	WR	6-0	195	Sr	Monroe, LA (Wossman HS)
24	Walter Williams	RB	6-1	210	Jr	Brusly, LA (Brusly HS/Southern U.)	85	Chris Cottonham	TE	6-4	225	Jr	Jonesboro, LA (Jonesboro-Hodge HS)
25	Shawn Gray	DB	6-1	200	Sr	Lake Charles, LA (W. Marion HS/Arizona Western JC)	86	Gershane Jessie	TE	6-4	230	Fr	Hauston, TX (B.T. Washington HS)
26	Rodney Beaudion	FB	5-8	220	Jr	Natchitoches, LA (Natchitoches-Central HS)	87	Anthony Dixon	WR	6-1	200	Sr	Capitol Heights, MD (Suitland HS)
27	Chris Clark	DB	6-0	185	Fr	Ontario, CAN (Nassar CC)III	88	Ellis Spears	WR	6-3	180	So	Zachary, LA (Zachary HS)
28	Levi Washington	WR	6-1	185	So	Tallulah, LA (McColl HS)	89	Fred Cagins	TE	6-5	250	Sr	Colombia, SC (E. Marion HS)
30	Raul Alleyne	WR	6-0	200	Jr	Ontario, CAN (Northern Secondary School/Nassar CC)	90	Antoine Smith	LB	6-2	220	Fr	Independence, LA (Independence HS)
31	Vyron Brown	RB	5-8	175	So	Shreveport, LA (Woodlown HS)	91	Seneco Knight	DL	6-4	280	Sr	Alexander City, AL (Benjamin Russell HS)
32	Kwency Norman	WR	6-0	170	Jr	Grambling, LA (Grambling HS)	92	Herbert Pickens	DL	6-2	268	Jr	Gardena, CA (Serro HS)
33	Eugene Hellams	WR	6-0	180	So	Washington, DC	93	Lonnie Walker	DE	6-5	265	Jr	Birmingham, AL (Parker HS)
34	Joe Christopher	RB	5-10	190	So	Dallas, TX (Lincoln HS)	94	Antwan Lawrence	DE	6-1	230	So	Brunswick, GA (Brunswick HS)
35	Byron Anderson	DB	6-2	190	So	Jonesboro, LA (Jonesboro-Hodge HS)	95	Allen Brice	DT	6-3	285	Fr	Gulfport, MS (Harrison Central HS)
36	Franklin Washington	FB	6-0	215	Sa	Shreveport, LA (Southwood HS)	96	Brian Pierre	DL	6-4	300	So	Baton Rouge, LA (Baker HS/Southern U)
37	Avery Jackson	DB	6-0	180	So	West Monroe, LA (West Monroe HS)	97	Walter Fall	DE	6-2	250	So	New Orleans, LA (Carver HS)
38	Denmark Reed	DB	6-1	180	Fr	Baton Rouge, LA (Southern Lab HS)	98	Dante Newell	DL	6-1	255	Jr	Farrell, PA (Forrell HS)
39	Keith Weatherspoon	PK/P	6-1	170	Fr	Memphis, TN (Ridgeway HS)	99	Richard Scott	DL	6-3	242	Jr	Birmingham, AL (Ensley HS)
40	Jason Arrington	FB	6-1	230	So	New Orleans, LA (St. Augustine HS)							
41	Quentin Hogg	RB	5-11	190	So	Monroe, LA (Corroll HS)							
43	Willie Evons	LB	5-11	220	So	Pittsburgh, PA							
44	Lawrence Richmond	PK	6-0	185	Jr	Lonham, MD (Eleanor Roosevelt HS)							
45	Kevin Brooks	RB	6-1	205	So	Bowie, MD (Eleanor Roosevelt HS)							
46	Reginold Jones	FB	5-11	232	Jr	Grambling, LA (Grambling HS)							
47	George Guidry	LB	6-2	230	Jr	Lake Charles, LA (W. Marion HS/ U. of Nebroska)							
48	Bobby Hopkins	WR	6-0	170	So	Zachary, LA (Zachary HS)							
49	Larmot Burton	LB	6-2	200	Fr	Columbus, GA (Shaw HS)							
50	Larry Metevia	C	6-0	318	So	Baton Rouge, LA (Southern Lab HS/Morehouse College)							
51	Kori Smith	OL	6-3	260	Sr	West Monroe, LA (Grambling HS)							
52	Terry Riley	C	6-0	300	So	Shreveport, LA (Huntington HS)							
53	Scott Wicker	LB	6-0	225	So	Zachary, LA (Northeast HS/Morehouse College)							
54	Robert Taylor	LB	6-4	255	Jr	Birmingham, AL (Parker HS)							
55	Ronald Johnson	LB	6-2	245	So	Baton Rouge, LA (Southern Lab HS)							
56	Alexis Robinson	LB	6-2	225	So	Birmingham, AL (Jackson-Olin HS)							
57	Jason McSwain	LB	6-1	225	Jr	Monroe, LA (Carroll HS)							
58	Timothy Morris	LB	6-0	240	Sr	Chicago, IL (Archbishop Weber HS)							



# GRAMBLING STATE UNIVERSITY TIGERS

## 1999 - 2000 MENS BASKETBALL SCHEDULE

### NOVEMBER

<b>15</b>	<b>Exhibition - Vasda</b>	<b>Grambling, La.</b>	<b>7:00 pm</b>
20	Louisiana State Univ.	Baton Rouge, La.	7:00 pm
22	Washington State Univ.	Pullman, Wa.	7:00 pm
24 - 27	Great Alaska Shootout	Anchorage, Alaska	TBA

### December

<b>1</b>	<b>Jarvis Christian</b>	<b>Grambling, La.</b>	<b>7:00 pm</b>
6	Creighton Univ.	Omaha, Ne.	7:00 pm
<b>8</b>	<b>Wiley College</b>	<b>Grambling, La.</b>	<b>7:00 pm</b>
10	Louisiana-Monroe	Monroe, La.	7:00 pm
15	Univ. of Arkansas (L.R.)	Little Rock, Ark.	7:00 pm
<b>20</b>	<b>Alabama State Univ. *</b>	<b>Grambling, La.</b>	<b>7:30 pm</b>
<b>22</b>	<b>Alabama A&amp;M*</b>	<b>Grambling, La.</b>	<b>7:30 pm</b>
23	Univ. of Memphis	Memphis, Tn.	7:30 pm
30	Texas Christian College	Ft. Worth, Tx.	7:30 pm

### January

3	Alcorn State Univ*.	Alcorn St., Ms.	7:30 pm
5	Southern University *	Baton Rouge, La.	7:30 pm
<b>8</b>	<b>Prairie View A&amp;M*</b>	<b>Grambling, La.</b>	<b>7:30 pm</b>
<b>10</b>	<b>Texas Southern Univ. *</b>	<b>Grambling, La.</b>	<b>7:30 pm</b>
15	Jackson State Univ.*	Jackson, Ms.	7:30 pm
22	Univ. of Ark. Pine-Bluff *	Pine Bluff, Ark.	7:30 pm
24	Mississippi Valley State*	Itta Bena, Ms.	7:30 pm
<b>29</b>	<b>Southern University *</b>	<b>Grambling, La.</b>	<b>7:30 pm</b>
<b>31</b>	<b>Alcorn State Univ.*</b>	<b>Grambling, La.</b>	<b>7:30 pm</b>

### February

5	Prairie View A&M Univ. *	Prairie View, Tx.	7:30 pm
7	Texas Southern Univ. *	Houston, Tx.	7:30 pm
<b>12</b>	<b>Jackson State Univ.*</b>	<b>Grambling, La.</b>	<b>7:30 pm</b>
<b>19</b>	<b>Univ. of Ark. Pine-Bluff *</b>	<b>Grambling, La.</b>	<b>7:30 pm</b>
<b>21</b>	<b>Mississippi Valley State*</b>	<b>Grambling, La.</b>	<b>7:30 pm</b>
26	Alabama State Univ.*	Montgomery, Ala.	8:00 pm
28	Alabama A&M*	Huntsville, Ala.	7:30 pm

### March

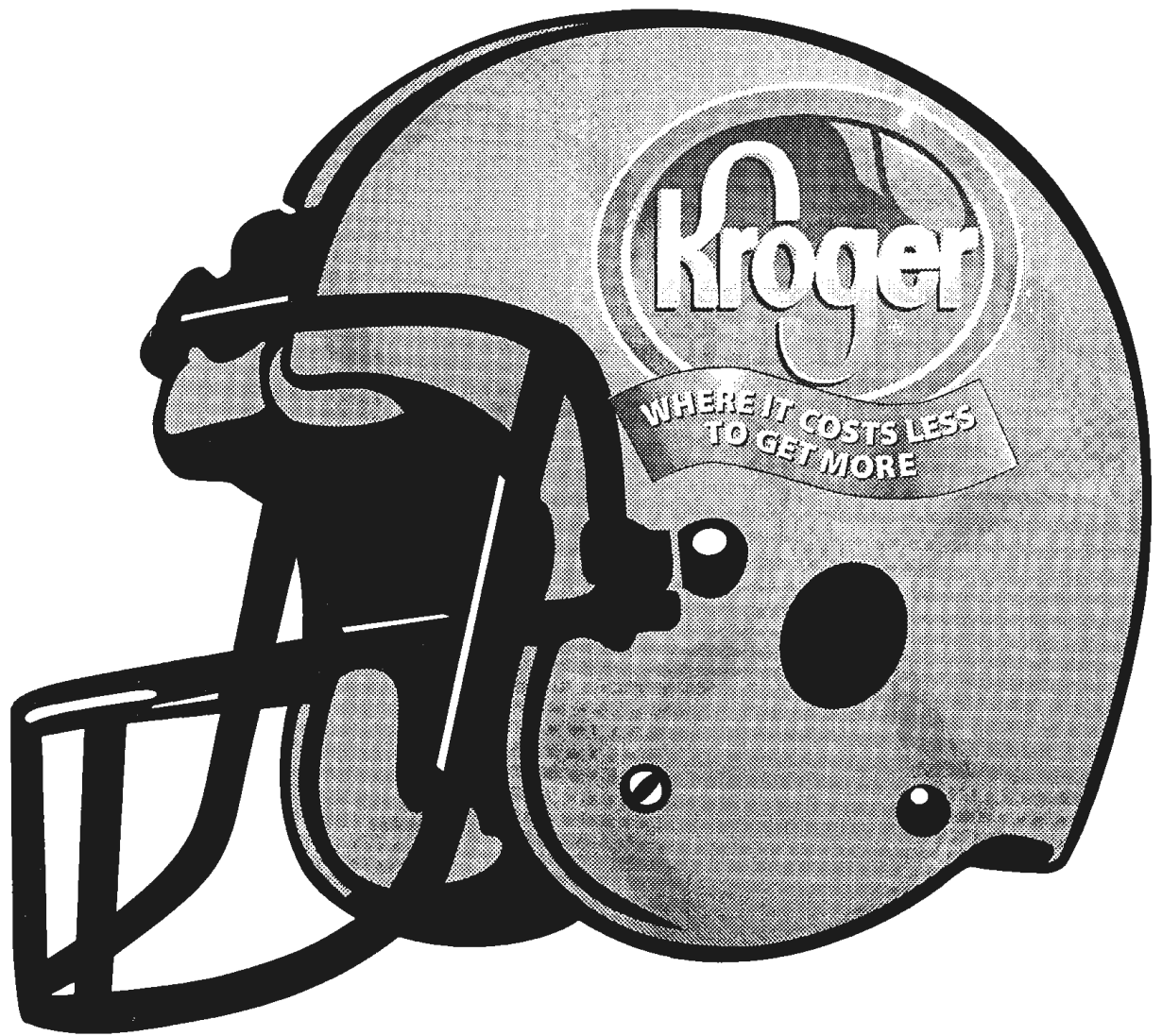
8-11	SWAC Tournament	Biloxi, Ms.	TBA
------	-----------------	-------------	-----

**Bold Denotes: Home Games**

**\* Denotes: Southwestern Athletic Conference Games**



# A Winning Team



Kroger Food Stores is a Proud sponsor of the

**1999 Al Lipscomb  
State Fair Football Classic**

# What do EDS, VA Hospital, Texas Utilities, Hunt Oil and Whataburger employees have in common? E-Pass!

E-Pass, an annual employee transit pass, provides a full year of unlimited, seven-days-a-week transportation on all regular DART bus and train service.

## Everybody benefits with E-Pass:

- Employees ride for free
- Reduces traffic and parking hassles
- Improves recruitment and productivity
- Free Emergency Ride Home program

For information on E-Pass or any of DART's Alternative Transportation Services please call 214-747-RIDE (7433).



We'll Take You There. **DART**

# PRAIRIE VIEW A&M UNIVERSITY FOOTBALL



## INTERIM HEAD COACH



**Clifton  
GILLIARD**

f commitment, loyalty, dedication and determination are any indications of a successful coach, Clifton Gilliard is destined to return the Prairie View A&M football program to the pinnacle of athletic excellence it once enjoyed.

A native of Houston, Texas, Gilliard grew up on the Westside of town, in the shadows of Prairie View A&M prowess. He brings a wealth of athletic knowledge and administrative experience to the position.

"I have mixed emotions about going back on the football field, but I want to do everything possible to help the students and the university," said Gilliard. "The opportunities I've had are due to Prairie View and this is another opportunity to give back."

Currently serving in his second stint at Prairie View after working as an assistant football coach from 1974-80, Gilliard has served in a variety of capacities. He has been acting chair of the Health and Human Performance Department and interim athletics director. He returned in 1989, serving in the capacity of assistant men's track and field coach and assistant football coach. During that time he worked with the sprinters and 110-meter hurdlers in track and was responsible for the quarterbacks and running backs on the football field.

In his new position, Gilliard is faced with the challenge of reviving a football program to its

powerful status of the past.

"Our main focus will be to make sure there is a smooth transition with the players and staff," said Gilliard. "We'll focus on the positive things accomplished last year."

A 1960 graduate of Prairie View A&M with a bachelor of science in health and physical education, Gilliard was a three-year letterman in football. He played halfback on the 1958 national championship team under coach William "Billy" Nicks. That same year he was named to the All-SWAC football squad.

Upon his graduation from Prairie View, Gilliard returned to Fidelity High, his high school alma mater. There, he served as the head track and field coach, assistant football coach and assistant boys' basketball coach. During his tenure as the track and field coach, his teams won a state championship, a second place finish in the state and five district championships.

In 1971, he moved on to Galena Park Junior High School, where he served as head track and field coach and assistant football coach before returning to Prairie View in 1974.

He served as an assistant coach on the last Panther team to produce a winning season in 1976 with a 6-5 record. Between his stints at Prairie View, he also served as the junior and senior high school principal and football coach in the Hempstead Independent School District. His most celebrated pupils at Hempstead were NFL professionals such as Oakland Raider Harvey Williams and former Green Bay Packer Johnny Holland.

Gilliard received two master's degrees from Prairie View A&M. In 1974 he received a master's degree in guidance and counseling and in 1993 in health and human performance. He also serves as associate athletics director, assistant track & field coach and an instructor in the department of health and human performance.

Gilliard and his wife Hazel have two sons Reginald and Derrick.





# Prairie View University Football Coaching Staff



**DOUGLAS FOWLKES**  
Offensive Coordinator



**MATTHEW PEARSON**  
Defensive Line



**MATTHEW MOODY**  
Graduate Assistant



**RORY BARNETT**  
Defensive Coordinator



**DWAYNE HENRY**  
Equipment Manager Assistant



**JERREL MOORE**  
Graduate Assistant



**TERANCE BROWN**  
Defensive Backfield



**KELVIN JEFFERSON**  
Student Assistant



**ERRICK WILSON**  
Graduate Assistant



**JEFF BROWN**  
Offensive Backfield



**STEVEN MAGAHEE**  
Graduate Assistant



# Prairie View University Athletic Staff



**ROBERT ATKINS**  
Head Women's Basketball Coach



**DR. CLINNON HARVEY**  
Faculty Athletic Representative



**LOUISE MADISON**  
Assistant Women's Basketball Coach



**RAYMOND BURGESS**  
Assistant Baseball Coach



**PATRICIA HOOD**  
Athletic Secretary



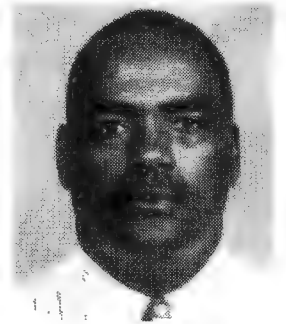
**JOHN MAYES**  
Director of Sports Medicine



**EDDIE DAVIS**  
Equipment Manager



**A. D. JAMES, JR.**  
Head Softball Coach



**VERNON PERRY**  
Head Men's & Women's Golf Coach



**CHARLES GOODMAN**  
Athletic Maintenance Coordinator



**CAROL KELLUM**  
Assistant Women's  
Track & Field Coach



**ALICIA PETE**  
Interim Head Volleyball Coach



# Prairie View University Athletic Staff



**EDWARD PHILLIPS**  
Assistant Men's Basketball Coach



**WALTER REDD**  
Interim Athletics Director



**ESSIE WASHINGTON**  
Head Women's Track  
& Field Coach



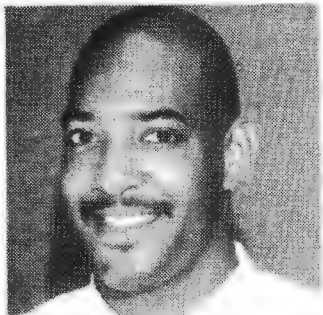
**ELWOOD PLUMMER**  
Head Men's Basketball Coach



**STEFANN ROBINSON**  
Director of Sports Information



**KAREN WASHINGTON**  
Administrative Assistant/  
Ticket Manager



**CHARLES PORTER III**  
Voice of the Panthers



**JOHN TANKERSLEY**  
Head Baseball Coach



**CLARENCE WOLFE**  
Assistant Softball Coach



**LARRY RAAB**  
Vice President  
University Operations



**ROBERT VANDERBILT**  
Head Men's & Women's  
Tennis Coach



**HOOVER J. WRIGHT**  
Head Men's Track & Field Coach





1 DeMarcus Peterson WR



2 DeMelvin Kelley TB



4 Bobby Perry DB



5 Anthony Carr DB



6 Marcus Ballard WR



12 Jamaal Foster QB



15 Jarrod Franklin PK



18 Quincy Fuller DB



22 Deontay Wilson WR



31 Damien Terry TB



32 John Danley LB



38 Steven Garner LB

# PRAIRIE VIEW A&M UNIVERSITY FOOTBALL



## 1999 DEPTH CHARTS

### OFFENSE

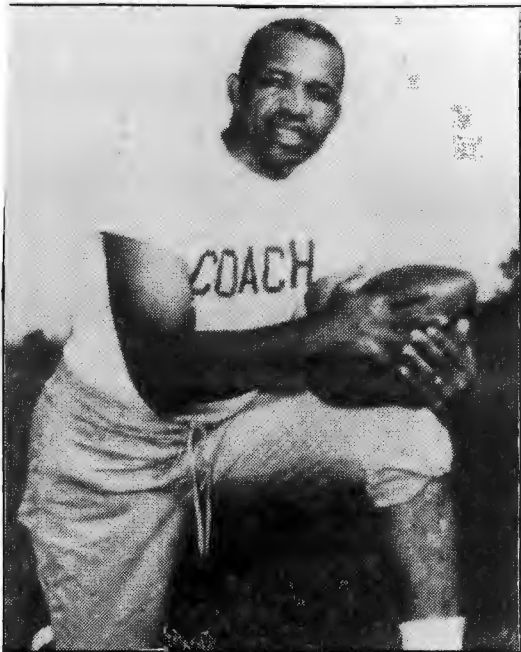
<b>TE</b>	83	DeJuan DANIELS (6-3, 258, Jr.)
	80	Gardner SHIVERS (6-1, 242, So.)
<b>LT</b>	67	Eian PRESTON (6-2, 322, Sr.)
	73	Mionell DIAMOND (6-1, 318, Jr.)
<b>LG</b>	78	Eric POMMIER (6-1, 316, Sr.)
	62	Lionel CARTER (6-1, 280, Fr.)
<b>C</b>	52	Wayne INGRAM (6-2, 280, Sr.)
	72	Antwan McKINNEY (6-1, 290, Fr.)
<b>RG</b>	61	Schredrick HOUSTON (6-2, 303, Jr.)
	64	Jamez WALKER (5-10, 341, Jr.)
<b>RT</b>	65	Elliott GILLIAM (6-3, 310, Fr.)
	74	Jason VANCE (6-2, 285, Sr.)
<b>WR</b>	6	Marcus BALLARD (6-4, 191, So.)
	20	Abmid McKINNEY (5-10, 175, Jr.)
<b>WR</b>	1	DeMarcus PETERSON (5-7, 156, Sr.)
	22	Deontay WILSON (5-7, 151, So.)
<b>QB</b>	12	Jamial FOSTER (6-1, 202, So.)
	21	Darion JUDGE (5-11, 212, Sr.)
<b>TB</b>	2	DeMekin KEILEY (5-9, 189, Jr.)
	11	London HERRY (5-9, 191, So.)
<b>FB</b>	39	DeShawn SHAW (5-11, 256, Sr.)
	34	DeShawn BANKSTON (5-11, 225, Fr.)
<b>K</b>	3	Chris DAILEY (6-3, 198, Jr.)
	15	Jarrod FRANKLIN (5-9, 180, Jr.)

### DEFENSE

<b>WLB</b>	56	Courtney MILLER (6-1, 232, Jr.)
	51	Brandon GLOVER (5-9, 209, Jr.)
<b>MLB</b>	38	Steven GARNER (5-11, 237, Sr.)
	32	John DANLEY (6-0, 260, Sr.)
<b>SLB</b>	11	Andrew TOLBERT (6-0, 231, Sr.)
	47	Lee JONES (5-10, 232, Jr.)
<b>DT</b>	79	Chris FASANO (6-3, 303, Sr.)
	96	Titus GUNTER (5-11, 269, Fr.)
<b>DT</b>	59	DeMarcus GRAYSON (6-0, 289, Jr.)
	63	Robert HUMPHERY (5-11, 275, Jr.)
<b>LE</b>	93	Heiser SHIELDS (6-1, 263, Sr.)
	94	Michael HENDERSON (6-3, 250, Jr.)
<b>RE</b>	99	Antonio SCOTT (6-0, 276, Sr.)
	55	Michael WIGGINS (5-10, 217, Jr.)
<b>SS</b>	5	Anthony CARR (5-9, 175, Jr.)
	10	Reginald SOLOMON (5-11, 186, So.)
<b>CB</b>	7	Robert DESTIN (5-10, 185, Sr.)
	24	Keylan WILLIAMS (5-8, 192, Jr.)
<b>CB</b>	4	Bobby PERRY (6-3, 183, So.)
	16	Alvin STEELE (5-10, 190, Jr.)
<b>FS</b>	18	Quincy FULLER (6-0, 175, Sr.)
	25	James SMITH (6-2, 198, So.)
<b>P</b>	15	Jarrod FRANKLIN (5-9, 180, Jr.)
	13	Chris DAILEY (6-3, 198, Fr.)



# FORMER PRAIRIE VIEW A&M FOOTBALL COACH BILLY NICKS INDUCTED INTO THE COLLEGE FOOTBALL HALL OF FAME



The National Football Foundation and College Football Hall of Fame inducted new members into the College Football Hall of Fame during enshrinement ceremonies in South Bend, Ind. on August 13, 1999. Among the 22 inductees was former Prairie View A&M University coaching legend William J. "Billy" Nicks.

Nicks, who served as the head football coach for 17 years, is the winningest coach in the history of Prairie View A&M University football. He recorded a 15-12-3 mark from 1945 to 1947 and a 112-27-5 record from 1952-65. In his 28 years of coaching football, he compiled an impressive career record of 195-60-22, including a 68-21-14 record at Morris Brown College.

While at Prairie View, Nick's teams won five national championships, eight Southwestern Athletic Conference titles and produced five undefeated seasons in conference play. His teams produced back-to-back national championships in 1953-1954 and 1963-1964. In addition, Prairie View compiled a 11 -1 record in bowl games under Nicks.

In the process, he received coach of the year honors in 1953, 1958 and 1964 by the Houston Informer, in 1963 by the NAIA, in 1958 by the Pittsburgh Courier, in 1959 by the Pigskin Club of Washington, D.C., in 1964 by the Southwestern Athletic Association and the 100% Wrong Club, and by the Atlanta Daily World in 1959 and 1964.

Among those who played under the athletic tutelage of Nicks are Pro Football Hall of Famer Kenny Houston and Otis Taylor, the 1971 AFC Player of the Year. Also, former AFL All-Pro running back Clem Daniels, defensive back Jim Kearney of the Kansas City Chiefs and tight end Alvin Reed of the Houston Oilers received their college training under Nicks.

"He ranks up there with the great coaches," said Daniels, who played for Nicks at Prairie View from 1955-58 and was captain of the 1958 championship team. "Bear Bryant, Eddie Robinson, Jake Gaither, you name them. He's right up there with them."

Nicks is the only college coach to produce a national championship in all three decades he coached (1930s, 1940s and 1950s). He had a winning record against every SWAC school, including Eddie Robinson at Grambling State, who's college football's all-time winningest coach.

Before his arrival at Prairie View, Nicks coached at Morris Brown College in Atlanta from 1930-42. He led his MBC teams to three black college national championships and four Southern Intercollegiate Athletic Conference crowns.

Nicks has also been inducted into the NAIA, Helms, Prairie View A&M, Morris Brown, the Atlanta University Center and SWAC halls of fame. In 1986, the athletic and intramural complex at Prairie View A&M was named in his honor and in 1995 the athletic field house was graced with his name.

In addition to his football duties, Nicks has served as athletics director and coached basketball and baseball. His basketball and baseball teams won several conference championships.

A native of Griffin, GA, Nicks received his undergraduate degree from Morris Brown and his M.S. degree from Columbia University. In addition to his profession in collegiate athletics, he served as director of the USO Club at Fort Stewart, GA., director of the USO Club at Tuskegee Army-Air Field in Tuskegee, AL and Parks Director with the City of Houston Parks and Recreation Department.

Now 94 years of age, the legendary Nicks resides in Houston, Texas with his wife, the former Lillie Bell Jackson.



**MEN'S BASKETBALL SCHEDULE**

<u>Date</u>	<u>Opponent</u>	<u>Location</u>	<u>Time</u>
<i>November</i>			
Wed. 17	Vasda USA (Exhibition)	Prairie View	7:00 pm
Sun. 21	Tulane	New Orleans, LA	7:00 pm
Tues. 23	Southwestern Assemblies	Prairie View	7:30 pm
Sat. 27	Wichita State	Wichita, KS	7:00 pm
<i>December</i>			
Sat.-Sun. 4-5	# PowerBar Invitational	Honolulu, HI	TBA
Sun. 12	Texas Tech	Lubbock, TX	7:00 pm
Tues. 14	Cleveland State	Cleveland, OH	7:00 pm
Thurs. 16	Wright State	Dayton, OH	7:00 pm
Mon. 20	★ Alcorn State	Prairie View	7:00 pm
Wed. 22	★ Southern	Prairie View	7:30 pm
Wed. 29	Mississippi	Oxford, MS	7:00 pm
<i>January</i>			
Sat. 8	★ Grambling State	Grambling, LA	7:30 pm
Mon. 10	★ Jackson State	Jackson, MS	7:30 pm
Sat. 15	★ Arkansas-Pine Bluff	Prairie View	7:30 pm
Mon. 17	★ Mississippi Valley State	Prairie View	7:30 pm
Sat. 22	★ Alabama A&M	Huntsville, AL	7:30 pm
Mon. 24	★ Alabama State	Montgomery, AL	7:30 pm
Sat. 29	★ Texas Southern	Prairie View	7:30 pm

<u>Date</u>	<u>Opponent</u>	<u>Location</u>	<u>Time</u>
<i>February</i>			
Sat. 5	★ Grambling State	Prairie View	7:30 pm
Mon. 7	★ Jackson State	Prairie View	7:30 pm
Sat. 12	★ Arkansas-Pine Bluff	Pine Bluff, AR	7:30 pm
Mon. 14	★ Mississippi Valley State	Itta Bena, MS	7:30 pm
Sat. 19	★ Alabama A&M	Prairie View	7:30 pm
Mon. 21	★ Alabama State	Prairie View	7:30 pm
Sat. 26	★ Southern	Baton Rouge, LA	7:30 pm
Mon. 28	★ Alcorn State	Lorman, MS	7:30 pm
<i>March</i>			
Sat. 4	★ Texas Southern	Houston, TX	7:30 pm
Thu.-Sat. 9-11	SWAC Tournament	TBA	TBA

★Southwestern Athletic Conference (SWAC) games. #PowerBar Invitational Field: Hawaii (host), Pacific, Prairie View A&M and Tennessee State. Times listed are local times in host cities.

**WOMEN'S BASKETBALL SCHEDULE**

<u>Date</u>	<u>Opponent</u>	<u>Location</u>	<u>Time</u>
<i>November</i>			
Wed. 3	Houston Jaguars (Exhibition)	Prairie View	7:00 pm
Mon. 15	Houston AAU (Exhibition)	Prairie View	7:00 pm
Sun. 21	Texas-El Paso	El Paso, TX	2:00 pm
Tues. 23	Tex. A&M- Corpus Christi	Prairie View	6:00 pm
Tues. 30	Paul Quinn College	Prairie View	6:00 pm
<i>December</i>			
Fri. 10	Stephen F. Austin State	Nacogdoches, TX	7:00 pm
Mon. 13	Southeastern Louisiana	Hammond, LA	7:00 pm
Fri.-Sat. 7-18	# Collegiate Sports Classic	Atlanta, GA	TBA
Wed. 22	* Southern	Prairie View	5:30 pm
<i>January</i>			
Wed. 5	Texas A&M-Corpus Christi	Corpus Christi, TX	7:00 pm
Sat. 8	* Grambling State	Grambling, LA	5:30 pm
Mon. 10	* Jackson State	Jackson, MS	5:30 pm
Sat. 15	* Arkansas-Pine Bluff	Prairie View	5:30 pm
Mon. 17	* Mississippi Valley State	Prairie View	5:30 pm
Thurs. 20	Huston Tilloston	Prairie View	6:00 pm
Wed. 22	* Alabama A&M	Normal, AL	5:30 pm
Mon. 24	* Alabama State	Montgomery, AL	5:30 pm
Sat. 29	* Texas Southern	Prairie View	5:30 pm

<u>Date</u>	<u>Opponent</u>	<u>Location</u>	<u>Time</u>
<i>February</i>			
Sat. 5	* Grambling State	Prairie View	5:30 pm
Mon. 7	* Jackson State	Prairie View	5:30 pm
Wed. 9	* Alcorn State	Prairie View	6:00 pm
Sat. 12	* Arkansas-Pine Bluff	Pine Bluff, AR	5:30 pm
Mon. 14	* Mississippi Valley State	Itta Bena, MS	5:30 pm
Sat. 19	* Alabama A&M	Prairie View	5:30 pm
Mon. 21	* Alabama State	Prairie View	5:30 pm
Sat. 26	* Southern	Baton Rouge, LA	5:30 pm
Mon. 28	* Alcorn State	Lorman, MS	5:30 pm
<i>March</i>			
Sat. 4	* Texas Southern	Houston, TX	5:30 pm
Wed.-Sat. 8-11	SWAC Tournament	TBA	TBA

\*Southwestern Athletic Conference (SWAC) games. #Collegiate Sports Travel Classic Field: Georgia State (host), Grambling State, South Carolina State and Prairie View. Times listed are local times in host cities.

***Thanks Dallas - Fort Worth  
for making us  
#1***



**Representin' Hip-Hop and R&B**

***Skip Murphy & Co.  
Mornings  
5:30am - 10:00am***

**"IT'S TIME TO CLAIM YOUR HERITAGE"**

**VESTIGE™**



*VESTIGE is the first fine watch  
produced by African Americans for  
African Americans. With it's distinctive  
multi-colored crown, VESTIGE offers  
those of Ebony way their first real choice  
in the fine watch market and of course,  
VESTIGE is the obvious choice for  
African Americans.*

**CORPORATE OFFICE:**

1150 Empire Central  
Suite 102  
Dallas, Tx 75247

214-630-2184...tel

214-630-2185...fax

www.vestigge.net

*Available now at the following Dallas area locations:*

**Robert's Jewelers**  
236 Wynnwood Village  
Dallas, Tx 75224  
214-946-3344

**Jimmy's Watch & Jewelry**  
307 E. Beltline Rd.  
Desoto, Tx 75115  
972-223-9859

**Robert's Ready To Wear**  
1636 MLK Blvd.  
Dallas, Tx 75215  
214-421-0624

**Gold N Things**  
115 E. Camp Wisdom, Ste 101A  
Duncanville, Tx. 75116  
972-296-5671





Ask for  
**Adrian Davis**  
(972) 709-2000  
2:00pm - 9:00pm Mon. & Fri.  
8:30am - 9:00pm Sat.  
or by appointment.

**Davis**  
Buick+Hyundai+GMC

*"Quality Automobiles.  
The Personal Attention You Deserve."*

**Stop by and test drive your choice of  
a new or pre-owned automobile.**

Conveniently located off  
I-20 @ Wheatland Road.





105.7 FM

**KRNB**

The Soul Of Dallas Ft. Worth

# Official Football Signals—1999

 <p><b>1</b> Ball ready for play *Untimed down</p>	 <p><b>2</b> Start clock</p>	 <p><b>3</b> Time-out Discretionary or injury time-out (follow by tapping hands on chest)</p>	 <p><b>4</b> TV/Radio time-out</p>	 <p><b>5</b> Touchdown Field goal Point(s) after touchdown</p>	 <p><b>6</b> Safety</p>	
 <p><b>7</b> Ball dead Touchback (move side to side)</p>	 <p><b>8</b> First down</p>	 <p><b>9</b> Loss of down</p>	 <p><b>10</b> Incomplete forward pass Penalty declined No play, no score Toss option delayed</p>	 <p><b>11</b> Legal touching of forward pass or scrimmage kick</p>	 <p><b>12</b> Inadvertent whistle (Face Press Box)</p>	
 <p><b>13</b> Disregard flag</p>	 <p><b>14</b> End of period</p>	 <p><b>15</b> Sideline warning</p>	 <p><b>16</b> Illegal touching</p>	 <p><b>17</b> Uncatchable forward pass</p>	 <p><b>18</b> Offside defense Encroachment (NF)</p>	 <p><b>19</b> False start Illegal formation Encroachment offense Illegal procedure (NF)</p>
 <p><b>20</b> Illegal shift - 2 hands Illegal motion - 1 hand</p>	 <p><b>21</b> Delay of game</p>	 <p><b>22</b> Substitution infraction</p>	 <p><b>23</b> Failure to wear required equipment</p>	 <p><b>24</b> Illegal helmet contact</p>	 <p><b>27</b> Unsportsmanlike conduct Noncontact foul</p>	
 <p><b>28</b> Illegal participation</p>	 <p><b>29</b> Sideline interference</p>	 <p><b>30</b> Running into or roughing kicker or holder</p>	 <p><b>31</b> Illegal batting Illegal kicking (Followed by pointing toward toe for kicking)</p>	 <p><b>32</b> Illegal fair catch signal Invalid fair catch signal (NF)</p>	 <p><b>33</b> Forward pass interference Kick-catching interference</p>	 <p><b>34</b> Roughing passer</p>
 <p><b>35</b> Illegal pass Illegal forward handing</p>	 <p><b>36</b> Intentional grounding</p>	 <p><b>37</b> Ineligible downfield on pass</p>	 <p><b>38</b> Personal foul</p>	 <p><b>39</b> Clipping</p>	 <p><b>40</b> Blocking below waist Illegal block</p>	 <p><b>41</b> Chop block</p>
 <p><b>42</b> Holding/obstructing Illegal use of hands/arms</p>	 <p><b>43</b> Illegal block in the back Illegal use of hands or arms (NF)</p>	 <p><b>44</b> Helping runner Interlocked blocking</p>	 <p><b>45</b> Grasping face mask or helmet opening</p>	 <p><b>46</b> Tripping</p>	 <p><b>47</b> Player disqualification</p>	

Note: Signal numbers 25 and 26 are for future expansion.  
(NF) National Federation of State High School Associations signal.

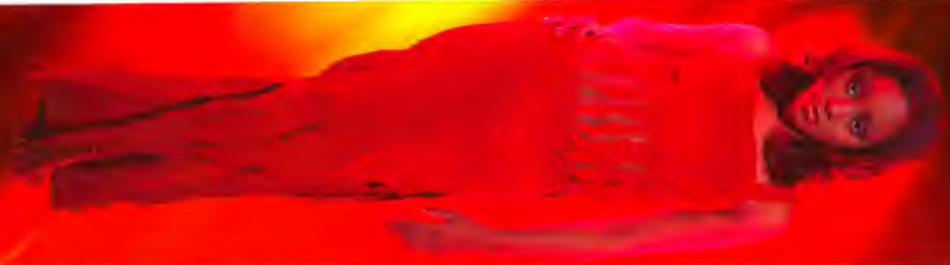


presents.....

# destiny's child™



wind



fire



earth



water

# Works Hard On The Air.



# Works Hard In The Air.



**Tom Joyner And Southwest Airlines. Working Hard To Keep Fares Low.**

Take it from Tom Joyner. It takes a hardworking man to know a hardworking airline. Call 1-800-I-FLY-SWA®.

**SOUTHWEST AIRLINES**

*IS MODEL'S AIRLINE*