

Prairie View A&M University

Digital Commons @PVAMU

PV Panther Newspapers

Publications

12-7-1972

Panther- December 1972 - Vol. XLVII, NO.7

Prairie View A&M College

Follow this and additional works at: <https://digitalcommons.pvamu.edu/pv-panther-newspapers>

Recommended Citation

Prairie View A&M College. (1972). Panther- December 1972 - Vol. XLVII, NO.7., *Vol. XLVII, NO.7* Retrieved from <https://digitalcommons.pvamu.edu/pv-panther-newspapers/99>

This Book is brought to you for free and open access by the Publications at Digital Commons @PVAMU. It has been accepted for inclusion in PV Panther Newspapers by an authorized administrator of Digital Commons @PVAMU. For more information, please contact hvkoshy@pvamu.edu.

Home Economics Dean Heads National Prof. Group

Dr. Flossie Byrd, dean of the School of Home Economics, is serving as president of the National Council of Administrators of Home Economics.

She recently addressed the membership of her national organization through the NCAHE Newsletter calling for cooperation and setting forth a "program of work for 1972-73". Dr. Byrd is also setting plans for the 1973 annual meeting of the Council scheduled on February 14-16 at the Pick Congress Hotel in Chicago.

In her Newsletter message, Dean Byrd set as the first major goal the development of a definition of home economics with the potential for significant contributions to the



Dr. Flossie Byrd

welfare of families and mankind. She also emphasized professional involvement, greater articulation and unification among allied organizations and broadening the research base.

Music Students Win Honors at National Ass'n Teachers of Singers

Eight Prairie View A. & M. music students and several staff members participated in the annual meeting and singing competition of the National Association of Teachers of Singing which was held in November at Oklahoma Baptist University, Shawnee, Oklahoma.

The participants included — Cora Johnson, soprano; Sophia Keegan, contralto; Dovie Ruffin, soprano; Marsha Lee, soprano; Deborah White, contralto; Maxie Zenon, tenor; John Coleman, tenor; and Larry Walker, baritone*.

Five members of the group scored in the ninety percentile and three in the eighty percentile.

Cora Johnson and Larry Walker, both juniors, won 4th places in competition with the over 800 representing schools from Texas, Arkansas, Louisiana, Kansas, New Mexico, Colorado and Oklahoma.

According to Dr. Anderson, the organizer, and who made the first entry of music students some 12 years ago, the Department of Music has always been fortunate in placing and securing a good position in this competition, if not the first place. "One would need to be present to see and hear for themselves and convincingly feel the electric shock," Dr. Anderson stated. Audible bravos were heard when Miss Johnson finish-

Organizations to Sponsor Fund Raising Bazaar

Several campus organizations will participate in a Fund Raising Bazaar this weekend in an effort to raise funds for the Sickle Cell Anemia Screening Program.

The schedule of events, scheduled Friday through Sunday, will begin with performances by local bands. The Junior Mosley Band and the Junior Souls and Vibrations all will

perform Friday evening at 8:00 p.m. Several grid stars from the Houston Oilers Club will be on hand.

A "Car Bash" is set for 2:00 p.m. Saturday, at 8:00 p.m. a wrestling match and karate demonstration are scheduled.

Sunday has been designated Army-Navy Olympiad Day. Activities will begin at 2:00 p.m. and close with a program by the Crescendos at 8:00 Sunday night.

Graduates Handbook Issued By Registrar

The Registrar's Office has published a Handbook of general information designed for each candidate as he prepares for graduation and commencement.

Titled "The Candidate's Handbook", the booklet is available to all students seeking answers to questions about graduating.

Be sure to pick up your copy.

Dr. Anne Campbell To Represent College Among Univ. Women

President A. I. Thomas has designated Dr. Anna L. Campbell as official college representative in 1972-73 to the Association of University Women.

During the past year, AAUW has worked actively in support of the Higher Education Act of 1972, has continued its leadership of an effort to secure a joint statement on "Standards for Women in Higher Education" by the major national educational organizations, and is cooperating with the American Council on Education in a proposal to establish an Equal Opportunity Registry for women and minorities.

The AAUW, through its Educational Foundation, likewise continues its support of fellowships for women in advanced graduate study, and we are currently engaged in a drive to raise, among our members, large additional endowments for this purpose. For 1972-73, AAUW has awarded 150 fellowships to American and international women.

Yearbook Photos Of Queens Set

Campus queens are asked to report to the Yearbook Office for schedule of shootings before the holidays.

Campus Beauties And Foxes Selected

A total of twelve campus beauties and 12 "foxes" have been selected by the Yearbook and Press Club based on popular voting by the student body.

The beauties selected are Wanda Carrier, Althea Tate, Joyce Washington, Florence LaMand, Freddie Weathers, Francis Grevenberg, Darlene Douglas, Gene Etta Dalcour, Tommie Matthews, Brenda Broussard, Patricia Smith, Phyllis Fontenot.

Young ladies selected as "Foxes" to appear as a feature in the 1973 Yearbook include: Janice Payton, Berrilyn Moore, Eunice Murphy, Debbie Osborne, Beverly Brown, Nethrial Jordan, Berlinda Hazeley, Gladus Davis, Shirley Jacob, Frances White, Sandra Richardson, Mary C. Washington.

ed her performance and this is the third time Mr. Walker has cut down many opponents in the national."

The piano students were accompanied by Dr. R. von Charlton, Professor of Piano, and Dr. J. Timothy Ashford. Dr. Robert A. Henry, Music Dept. head, accompanied the group.



INDUSTRIAL EDUCATION GRADS — Zolline Curry, the first female Drafting and Design Technology graduate, raps with Mrs. Dolores Trout, a 1968 Industrial Education graduate, about the role of women in industry. Miss Curry and other classmates took a field trip last spring to the architectural firm of Caudell, Rowen, Scott commonly known as CRS. Mrs. Trout has been with the firm for three years and is assigned to the electrical design function. Her duties are to design and layout the electrical equipment for a project. CRS is known for outstanding school, church, and commercial building designs.

Final Exams, Closing Activities Scheduled

Final examinations for the first semester are scheduled on December 18-22, and the semester will officially end at noon on December 23.

Graduate students enrolled in Saturday classes will take finals on December 16.

The college will be closed throughout the remainder of December and through January 2 or 3.

Practically all campus operations will be closed throughout the holiday period.

Registration for the Second Semester is scheduled on January 8-9 and classes are set to begin on January 10. A spring recess is planned during the semester which is scheduled on March 5-10, following the mid-semester tests.

Holiday Activities to Highlight Final Activities

Most of the student organizations have sponsored or will be sponsoring Christmas parties and other types of holiday observances during the last two weeks of the present semester and the calendar year.

The faculty and staff have announced their Annual Ball which will be held on Saturday, December 16. Subscription to the

holiday ball will be \$3.00 for singles and \$5.00 per couple.

Campus decorations are beginning to appear around campus. Administrative offices around campus, starting with the president's office, set the pace, and others are beginning to follow suit. It is a long time tradition to decorate for the Yuletide Season at Prairie View.

Follow The Panthers to Huntsville, Mon., Dec. 11



INTERSCHOLASTIC LEAGUE PROJECT — Doctors Rhea Williams and Marshall of the University (Texas) Interscholastic League pose with PV personnel concerned with college athletic history and the old PV League. The UIL plans to pay tribute to the winners, participants and leaders in the Prairie View League in activities planned soon. Dean C. L. Wilson is seated between the visitors. Standing are A. Dunley, W. J. Nicks, Frank Francis and C. A. Wood.



FRESHMAN CLASS OFFICERS — Always of interest to older PV-ites is the slate of officers of the new freshman class. They are presented above and includes Freddie Newbold,

Yurrie Brigham, Margie Richardson, Cutee Hudson, Eunice Phillips, Lawrence Elder, Sandra Mason and MISS FRESHMAN - Carol Alexander.



ASTRODOME HAPPENINGS — The PV half-time show featured the singers pictured above. The cheerleaders (in bottom photo) did their share in keeping spirits high.

Phi Alpha Elects Officers

The Phi Alpha Sociological Honor Society held its first meeting of the 1972-73 school year, November 16, 1972. The purpose of this meeting was to elect officers and to prepare a schedule of activities for the honor society. Its newly elected officers are: President, Wendell Coleman; Vice-President, Ronald Wrightsil; secretary, Cynthia Raynor; treasurer, Gladys Davis; reporter, Margaret Goodman, and Program and Social Chairman is Delores Moss. Other members of Phi Alpha are Carolyn Yancy and Laverns Thomas.

This organization was established on Prairie View's campus December 17, 1971 with the purpose of promoting scholastic attainment in the field of social work. The achievements of Phi Alpha can be accredited to Mrs. Jimmie Poindexter, the club sponsor.

Margaret Goodman
Reporter

Army ROTC Mid-Year Commissioning Set

Thirteen Army ROTC cadets will be commissioned second lieutenants U. S. Army, in a colorful ceremony December 17, 1972. Capt. Don K. Clark, a 1967 alumnus will deliver the commissioning address. Capt. Clark commands A Company, 75th Rangers at Fort Hood, Texas.

The following are scheduled to be commissioned: Robert Price, Jimmie R. Taylor, Terry Bussey, Gene Strahan, Elister Lewis, Juan Sanchez, Walter Bryant, Wm. Iglehart, Billy Freeman, Johnny Hardeman, Haymon Fields, Dennial Elmore, Ira Murchison.

Details as to location and time will be announced shortly.

A Rebuttal Greek Letter Organizations

Socialization plays an important role here at P. V. To be socially accepted is the in thing. Have you ever stopped to ask yourself why anyone would become a member of a Greek letter organization. How about the ambition and the desire to surpass being a half-stepper. Contrary to the belief that all Greek Letter Organizations do is continually indulge in wine, women and song, the forgotten fact remains that these chosen people are leaders.

These leaders lead in practically every facet of human endeavor. They have invaded the realms of success in Education, Religion, Government, Music and Sports. If you cannot relate to this, use your own environment as an example. Here at P. V. people of these often abused organizations are leaders in every facility of this college.

Those who are disappointed often tend to diminish the image of Greek letter organizations. Many consider Greek Letter Organizations, bold boisterous, rude and domineering. These qualities have been misinterpreted. Though creatures of this variety may often times show their awesome faces, this is not the true fraternal aspiration.

So if criticizing campus organizations is your bag attack the problem from within. I suggest you join, give yourself, and make them better.

Donald Leon McClure
(Sweet Don)

NOTE: If you and other Greeks live up to the noble purposes of your organizations and display true leadership as you claim, there will be no need to call attention to undesirable characteristics. —Editor

Geography and Economics Dept.

The classes in World Regional Geography, the geography of Anglo-America and the geography of Transportation were introduced in November to new techniques in geography instruction based on a grant awarded to the Association of American Geographers by the National Science Foundation. This award allowed a team of geographers to study new techniques in teaching that are now being disseminated in the public schools and colleges over the nation.

In the World Regional and the Geography of Anglo-American classes, students engaged in performance-based instruction techniques in geography. A multiple series of activities were planned involving student activities through this important media of geographic instruction. These activities are in keeping with the college commitment to

performance based instruction.

The geography of transportation students engaged in the building of a model North American City and the relationship of transport networks. This activity aroused enthusiastic cooperation in the part of the students.

These above mentioned activities were introduced, guided and directed by the able leadership of Dr. Roberta Raithel, Coordinator of Geography, Texas Education Agency, Austin, Texas. Dr. Raithel received her training in Geography at Southern Methodist University, and is a member of the Planning Board of the National Council of Geographic Education. She spends much time visiting schools and colleges over the state and also a visiting consultant for the Geography Institute for Teachers, held at Prairie View, Summer, 1972.

School of Nursing Adds Reading Specialist

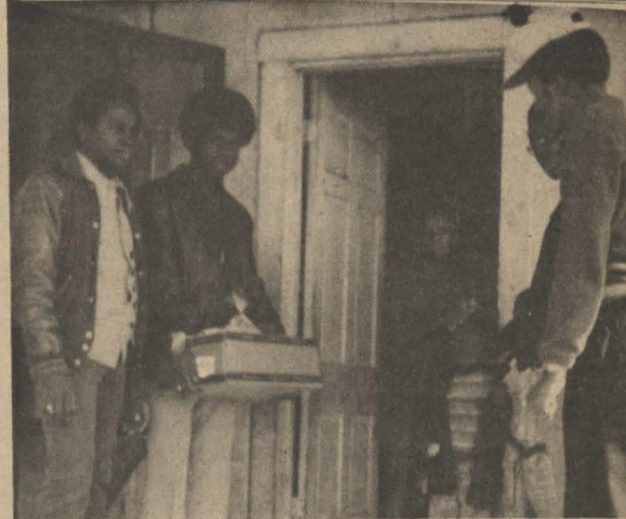
The newest addition to the School of Nursing staff is Mrs. Shirley Ogle, reading specialist, who has been placed at the Houston Clinical Center. Mrs. Ogle is a native of Pasadena, Texas with a master's degree from Texas A. and M. University in Curriculum and Instruction. Her professional experiences have included teaching, reading, and related skills for several years in and out of the state.

Mrs. Ogle has been assigned the responsibility for the development and coordination of the Reading and Study Skills Program (RASSP) in the School of Nursing. She will be involved in teaching phases of reading to individuals and small groups of nursing students, as well as the supervisions of the reading

laboratory.

The Reading and Study Skills Program is designed to enhance the academic skills of each student enrolled in the upper-division of the School of Nursing and to complement the already existing skills of the nursing student. The RASSP services at the Houston Clinical Center include instruction and topics in study techniques and vocabulary and textbook comprehension. Students have recently completed the diagnostic phase of the program and are preparing to move into the individually planned programs.

Classes and study topics of general concern to the student are conducted in a seminar bases with corresponding related activities wherein the student can be evaluated for his progress.



Annual Alpha Thanksgiving Basket A Success

Alpha Phi Alpha Fraternity, Inc., once again sponsored 'The Annual Alpha Thanksgiving Basket', which has been reported to have been a success. The original Thanksgiving Basket was initiated by Alpha Phi Alpha, became wide-spread among Alpha chapters throughout the nation, and was later adopted as one of the service projects of the Fraternity.

Eta Gamma Chapter distributed six baskets

this season; three to needy families in Hempstead and three in Waller. The baskets contained a variety of can goods, averaging fifteen per basket and two fryers.

Brother Ernest (Doc) Richards who spearheaded the project, is commended for a job well done. And the men of Alpha would like to express gratitude and sincere thanks to those students and residents of the Prairie View

FIND YOURSELF ON THE AEROSPACE TEAM



If you are a college graduate or a senior nearing graduation, you may be eligible for Officer Training School and Air Force Flight Training.

Recent pay raises have made Air Force pay more comparable with civilian pay. And, you'll come out ahead in the Air Force when you consider the other benefits.

Things like 30 days' paid vacation each year from the start . . . medical care for yourself and your family . . . tax-free housing and subsistence allowances . . . flight pay, etc.

And, there's the job security that an Air Force career offers-not to mention retirement at half your base pay after just 20 years. Or three-quarters after 30 years.

You have a lot going for you in the Air Force! Think it over. For information contact SSGT Carter Williams at the student Placement Center or call 857-2120.

THE PRAIRIE VIEW PANTHER

Published Bi-Weekly in the Interest of a Greater Prairie View A. and M. College. The PANTHER serves as the voice of Pantherland.

STUDENT STAFF Freda G. Hunt, Marilyn A. Knolly, Clarence McKnight, Herrietha A. Spain, Jacqueline A. Williams, Reba W. Williams, Jay D. Anderson, Mary Jenkins, Donny Young, Pat Washington, Chandra Bell, Irma Bundage, Ollie Carr, Charles Cokes, Beverly Williams, Precious Buckner, Jake Debose.

PHOTOGRAPHERS Tom Godwin, Malcolm Dickinson, Roy Pace, Michael McQuade

SECRETARY Mrs. Ruby L. Bradford

SPORTS ADVISOR Joe Booker

FACULTY ADVISOR Dr. C. A. Wood

Prairie View A&M College is open to all, regardless of race, color, religion, or national origin.

Any news items, advertising, or matters of interest to THE PANTHER may be presented to the Department of Student Publications, Rooms 108-112, New Classroom Building Telephone 857-2117.



EPSILON PI TAU SPONSORS SEMINAR — Beta Iota Chapter of Epsilon Pi Tau Inc. sponsored a Seminar on October 24, 1972. Mr. Paul MacLean representative of the American Plywood Association gave a slide presentation to a group of Drafting and Design and Building Construction Technology majors. The presentation was very informative and illustrated the modern trends used in plywood construction. Mr. MacLean is illustrating the use of plywood to Mr. Bradford, Drafting and Design Majors and Mr. Ashton, Building Construction majors.

Dr. Rao Appointed to American Concrete Institute Committee

Dr. R. N. S. Rao, Professor and Chairman department of Civil Engineering of Prairie View A&M College, has been appointed Chairman of the Subcommittee E-704-9 of the American Concrete Institute.

The 9-member committee's responsibility is to write Chapter 9 of the Concrete Institute's Building Code and prepare the manual or handbook on this chapter for the American Concrete Educational Series.

The ACI educational en-chiridion is prepared for use by the student or the engineer who is not experienced in the concepts of the ACI Building Code. The en-chiridion provides background information, theoretical principles and typical example problems which are designed to

provide an understanding of the decisions and requirements as they are set forth in the standard ACI documents.

Dr. Rao is presently experimenting with the preliminary materials which will comprise the ACI Handbook, in Reinforced Concrete.

Thanksgiving Day Classic Game of No Name Offenses

by C. McKnight

Offense took the night off in the recent 13-0 PV loss to TSU on Thanksgiving night. Ordinarily, a game of fourth and long, incomplete passes, and massive penalties are tell-tale facts to any avid football follower, who didn't attend the game, that the game was marred by either mud and rain or cold and snow. However,

PV Wins Winter Relays

The youthful Hoover Wright Panther track team was off to the race and running as they swept the first annual Prairie View Winter Relays Saturday, December 2.

The Panthers won the 440-relay (42.6), 880-relay (1:28.8), two-mile relay (7:54.5) the mile relay (3:20.9) and John Beal of PV won the 440-dash (51.1).

Results

Shuttle Hurdle Relay— 1. Lamar (Price, Gipson, Prejean, Charlton, 59.9; 2. Prairie View, (63.6).

440-Relay — 1. Prairie View (Stewart, Martin, Benson, Deckard), 42.6; Lamar Univ. disqualified.

Distance Medley — 1. TSU (Washington, Jenkins, Johnson, Fulton), 10:58.2 2. Prairie View, 10:58.6; 3. Lamar, 11:13.1.

880-Relay — 1. Prairie View (Stewart, Martin, Benson, McBride), 1:28.8, 2. PV "B" Team; 3. Lamar, 1:35.

Two-Male Relay — 1. Prairie View (Evans, Pippins Taylor, Geter), 7:54.5; 2. Lamar, 8:16.7; 3. TSU, 8:27.0

440-Dash — 1. John Beal, PV, 51.5, 2. Jessie

Lopez, TSU, 52.9; 3. Rick Adams, Lamar 53.6; John Woodson, Lamar, 54.3; Gerald Moore, TSU, 55.0.

Four-Mile Relay — 1. PV (Evans, Martin, Taylor, Geter), 3:18.5; 2. Lamar, 3:20.9; 3. TSU, 3:22.7.

Women Results

300-Yard Dash— 1. PV,

PV Loses Opener To Sam Houston

The Prairie View Panther cagers lost a nip and tuck 75-72 non-conference game to Sam Houston State at PV in the Panthers 1972-73 season opener at PV.

The Panthers took a 7-point lead midway the first half only to have it clipped by SHS with 8:24 on a field goal that sent SHS ahead 22-21. During this span the Panthers hit a two-minute cold spree without scoring.

Sam Houston built a 10-point lead with 6 minutes in the half, but the clutch shooting of guard Herbert Guin closed the gap and the Panthers went in at half-time training 48-42.

But the never-quitting Bearkats tied the score 70-70 with 2:58 and later went ahead on a field goal to make it 72-70. But Walt McCowan tied it on a 30-footer 72-72 with 48 seconds left.

With two seconds left, SHS went ahead 74-72 and to later win 75-72.

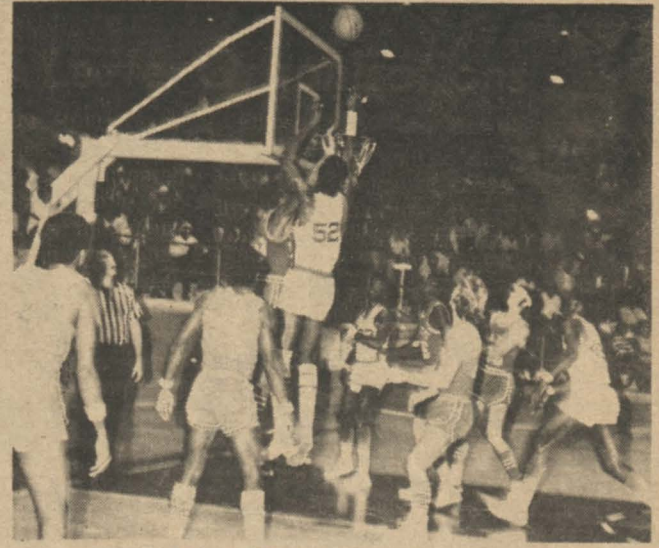
PRAIRIE VIEW

Player	FG	FT	F	TP
McCowan	4-5	9-10	3	19
Johnson	0-7	0-4	5	0
Reynolds	2-5	3-4	5	7
Dyer	8-15	5-6	4	23
Guin	5-12	2-5	5	8
Keys	0-9	6-6	5	6
Millage	1-1	0-2	3	2
Gant	1-1	1-4	0	3
Brooks	1-1	2-3	5	4
	22-56	28-44	35	72

SAM HOUSTON

Player	FG	FT	F	TP
Lister	8-21	9-11	5	24
Moss	1-3	2-5	5	5
Newell	3-10	3-4	5	9
White	4-13	5-7	4	13
Battle	4-13	0-3	4	8
Davis	1-6	2-5	2	4
Kreter	0-4	0-1	2	0
Jones	0-2	0-0	1	0
Pugh	3-5	2-4	4	8
Allen	4-9	0-3	4	8
	28-86	23-43	36	75

touchdown and was actually defended well by PV's Lester Morgan, this was a game in which two no name offenses made defense look like it owned the game of football. The game could have easily been a 0-0 tie except for two plays that unfortunately for PV resulted in TSU touchdowns. Although both defenses in reality played great, one was given the impression that the varsity defenses of both teams were opposing J-varsity offenses. As a result, the games "Most Valuable Player" awards went to two defensive standouts, PV's Talmadge "ooh-wa" Sharpe and TSU's David Thomas. Finishing the season at 5-5, this has nevertheless been an improvement over last year's 3-7 season. But the disappointment comes in the fact that this has probably been PV's first season in the history of the school that it has not scored a touchdown rushing from scrimmage.



PV - SAM HOUSTON GAME — Panther Lawrence Johnson leaps high for a shot in nip-and-tuck battle with Sam Houston.

PV Ends Season With 5-5 Record

SWAC Mark 1-5

As far as the season record is concerned, the Prairie View Panthers completed the 1972 football season with a 5-5

Charlene Branch, 37.3; 2. Shirley Williams, PV, 37.3; Rose Stout, Worthling, 38.1; 4. Laura Davis, Astrobelles, 38.8.

600-Yard Dash — 1. Debra Sapenter, PV 1:10.6; 2. Debra Branch, PV, 1:12.2; 3. Susan Abernathy, 1:28.5; 4. Mary Wallace, PV, 1:30.0; 5. Renelda England, Astrobelles, 1:32.0; 6. Geraldine Taylor, PV, 1:33.0.

mark, the best since 1967, when the Panthers went 5-5-0.

But, elsewhere the Panthers suffered from several setbacks. They finished their conference record at 1-5, which tied Southern and Mississippi Valley for last place. The Panthers also had offensive setbacks. They gained only 564 total yards rushing and 700 passing.

With only eight seniors lost through graduation, Coach Theophilus Danzy is confident the Panthers will be on the upswing in 1973.

Danzy's main concern will be finding offensive personnel.

More Auto Tech Graduates Employed

Mr. D. Fontenot, head of the Automotive Technology Department, at Prairie View A. & M. College reports that two of the three big automobile producers employed three May and August, 1972 Automotive Technology Graduates. The names, positions, corporations and locations are as follows: Samuel Sauls, Automotive Sales and Service Representative, Ford Division, Ford Motor Company, Chicago, Illinois; Henry Lott, Sales and Service representative, Buick Division, General Motors Corporation, Flint, Michigan; and Patrick Jackson, Sales and Service representative, Ford Division, Ford Motor Company, Richmond, Virginia.

Sauls reported that thirty two other persons were interviewed for the position which he holds. Jackson also reported that many persons were interviewed for the position in which he is serving.

All three of the graduates are currently enrolled in Ford and General Motors Training Centers. They will study advanced sales and service for a period of one year after which they will be assigned to a sales and service

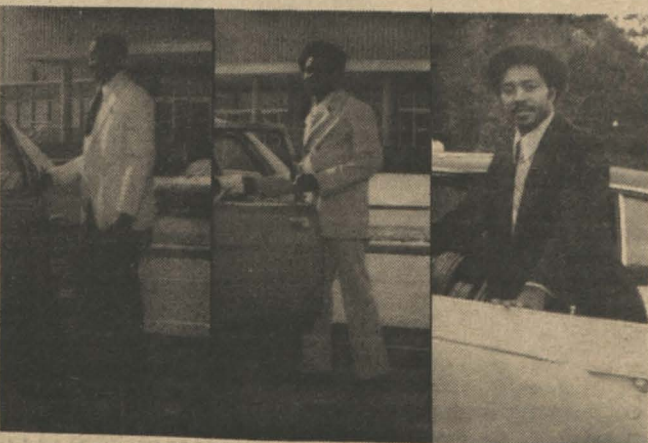
zone. The graduates will be paid full starting salary while in training.

The graduates will be entitled to several fringe benefits. For example: Opportunities and financial assistance to earn advanced degrees in institutions of higher learning while maintaining full time employment; medical and hospitalization insurances; paid vacations and holidays; retirement income; opportunities to buy Ford and General Motors Stock; expense account; new automobile for business purposes; and more than thirty per cent discount on any new Ford or General Motors automobile they may wish to buy for personal use.

Sauls is married to the former Miss Erma J. Jackson. Mrs. Sauls was employed by the School of Engineering at Prairie View A. & M. College, as a secretary, when Sauls accepted employment with Ford.

Jackson is married to the former Miss Faye E. Brown. Mrs. Jackson is a former Prairie View student who received her Bachelor of Science Degree in Elementary Education. She taught at A. B. Anderson Elementary School in Houston, Texas until her husband accepted employment with Ford.

Henry Lott is from Goliad, Texas. He is not married.



Lott

Sauls

Jackson

See things our way.



Visit a Doctor of Optometry associated with TSO. You'll find professional eye care and the finest quality eyewear available at most reasonable fees. TSO offers convenient credit at no extra cost. BankAmericard® and Master Charge® Cards are also honored.

Visit a TSO office soon. And see things our way.

Associated Doctors of Optometry
TEXAS STATE OPTICAL

Consult your telephone directory for the TSO office nearest you.

EXTRA SPECIAL CHRISTMAS SALE

AT

FRENKIL'S

HEMPSTEAD, TEXAS

MEN'S VEST-SHIRT-PANT SET

2 and 3 Piece Set

Reg. \$19.98 - \$39.98

SALE PRICED \$10.00 - \$19.00



MEN'S FINE FASHIONED KNIT SWEATER SHIRTS

LONG SLEEVE

Reg. Priced \$8.98 - \$19.98

VERY SPECIAL AT \$4.99 - \$11.99

These Are Very High Fashion Knits S-M-L-XL

POLYESTER KNIT MEN'S PANTS

Reg. \$15.00 - \$20.00

\$11.00

SIZES 28-40

VERY SPECIAL GROUP OF LADIES'

DRESSES & PANT SUITS

\$19.98 - \$49.98

NOW

1/2 PRICE



BOY'S SHIRTS

IN FINE KNITS

Values to \$5.00

\$2.49

Sizes 4-20

MANY COLORS AND STYLES

MANY MANY MORE

CHRISTMAS BARGAINS

MEN'S WINDBREAKER JACKETS

Reg. \$6.98

\$3.99

Reg. \$7.98 to \$9.98

\$5.99

IN NYLON AND DACRON-COTTON

Many of These Jackets Are In Tall Men Sizes

