

Prairie View A&M University

Digital Commons @PVAMU

---

PV Panther Newspapers

Publications

---

1-7-1971

## Panther - January 1971- Vol. XLV, NO.9

Prairie View A&M College

Follow this and additional works at: <https://digitalcommons.pvamu.edu/pv-panther-newspapers>

---

### Recommended Citation

Prairie View A&M College. (1971). Panther - January 1971- Vol. XLV, NO.9., *Vol. XLV, NO.9* Retrieved from <https://digitalcommons.pvamu.edu/pv-panther-newspapers/68>

This Book is brought to you for free and open access by the Publications at Digital Commons @PVAMU. It has been accepted for inclusion in PV Panther Newspapers by an authorized administrator of Digital Commons @PVAMU. For more information, please contact [hvkoshy@pvamu.edu](mailto:hvkoshy@pvamu.edu).



**COMING TO PV** — Charles Wright and the Watts 103rd Street Rhythm Band will appear in concert here on February 5 under the sponsorship of the Student Government Association.

## Increase Noted In College Gifts and Grants

According to President A. I. Thomas, a large number of gifts and grants from various sources have been received by the College. The number of such grants has increased as the school year progresses.

Gifts and grants received recently include the following:

\***Celanese Chemical Company** — Mr. James M. Jackson, Process Engineer for Celanese Chemical Company, visited with us on December 15 and presented a check for \$2,000 which represents an unrestricted grant to the College.

\***The Shell Companies Foundation, Inc.** has contributed a check in the amount of \$1,000. This will be used for scholarship and matched with EOG

making a total scholarship of \$2,000.

\***The Humble Companies Foundation** made available to the Engineering Department a grant in the amount of \$4,000. \$3,000 is to be used for Engineering Development and \$1,000 is for unrestricted purposes.

\***Congratulations to the Halliburton Education Foundation, Inc.** which has made a \$10,000 grant to the College. \$5,000 per year for two years to be used for unrestricted purposes. The Halliburton Education Foundation, Inc. is affiliated with Brown & Root, Inc.

\***The Detroit Prairie View Alumni Association** has sent a check for \$500.00 to be used as a scholarship for a needy student. See *GIFTS, Page 2*



# PANTHER

## A&M COLLEGE of TEXAS

VOLUME XLV, No. 9

Prairie View, Texas

JANUARY 1971

### Two New Board Members Named By Gov. Smith

Two new members of the Texas A&M University Board of Directors were sworn in Monday by the Secretary of State in Austin.

Appointed by Gov. Preston Smith Friday were William H. (Skip) Lewie, Jr. of Waco and H. C. (Dulie) Bell, Jr. of Austin, both A&M graduates. The governor also reappointed S. B. Whittenburg of Amarillo.

Smith's appointments were effective Sunday and expire January 10, 1977.

Swearing-in ceremonies were held Monday in the office of Secretary of State Martin Dies, Jr.

Lewie replaced R. Wofford Cain of Dallas and Bell succeeds Sterling



**Dr. Jack K. Williams** Former Commissioner of Higher Education in Texas returns from Tennessee position to head oldest institute in the state.

Evans of Houston.

The nine-member A&M board has three appoint-

See *NEW BOARD, Page 2*

### Gets Acquainted At PV Texas A&M System Head

Texas A&M University System President, Jack K. Williams spent a busy day on The Prairie View campus Tuesday talking with administrators, faculty, staff and students.

The new head of the A&M System, which includes Prairie View, addressed the monthly Workers Meeting held in The Ballroom. With President Thomas and guide, he toured new building sites and

studied needs of the College.

Dr. Williams has recently been elected to a second term as chairman of the Southern Association of Colleges and Schools' Commission on Colleges.

The Southern Association of Colleges and Schools, one of the nation's six organizations responsible for general accreditation, represents 553 colleges. See *SYSTEM HEADS, P. 3*

### PV Band and ROTC Units to March in Austin Parade

Gov. Preston Smith announced today, "we are extremely pleased and honored that the A&M Marching Band, Army ROTC Drill Team and Navy ROTC Color Guard of Prairie View will be featured in our inaugural parade January 19 in Austin.

"The talent and dedication that the band, drill team and color guard members and their leaders will display in the Inaugural Parade will show onlookers an excellent example of some of our state's finest qualities," said Gov. Smith.

The giant hour-and-a-half long parade will begin at 3 p.m., following the traditional noon inauguration ceremony on the front

steps of the Capitol for the swearing-in of Gov. Smith and Lt. Gov. Ben Barnes. All elected state officials traditionally ride in the parade which travels up Congress Ave., and is reviewed by the governor and lieutenant governor after their participation.

The theme will be "Economic Development in Texas" and the inaugural parade this year will draw many floats representing Texas industry. Also participating will be floats and beautiful girls representing Texas tourist attractions, military installations, high school and college bands and drill teams and mounted sheriffs' poses.

### Religious Emphasis Week Scheduled Jan. 31 - Feb. 1

Week will be observed at the College on January 30 through February 7.

For the first time, the annual ministers conference will be held during the religious emphasis period. Conference speakers and other visitors will contribute to the week's activities.

The Theme for the occasion is "The Church Serving The Present Age."

Speakers scheduled to

appear during the week in-

Speakers scheduled to appear during the week include: Bishop K. W. Copeland, United Methodist Church, Houston; Bishop Joseph A. Johnson, Jr. Christian Methodist Church, Shreveport, Louisiana; Dr. Bernillee Faison, Baptist Ministry, Los Angeles, California; and The Reverend Charles Blake, Church of God in Christ, Los Angeles California.

### Student Selected

### Queens, Beauties and Fashion Elite Make Yearbook Trip

Thirty-six campus beauties, campus queens, and "most fashionable" young ladies and gentlemen made the annual yearbook trip for special feature photos which this year were taken in Houston, Thursday, January 14.

Photos of Miss PV and attendant, Miss AROTC, Miss NROTC, "campus beauties", and "most fashionable" were taken in special photographic settings on the Southwest Freeway near the HOUSTON POST, Post Oak Shipping Area, and Loop 610 West at Interstate 10.

Students who made the trip included campus queens: Margaret Penn - Miss Prairie View, Cynthia Charles - 1st attendant to Miss PV, Sandra Baker - Miss ROTC, Miss Wilma Burren - Miss NROTC, and Joyce Locke - Miss Press Club; "Most Fashionable" students: Linda Houston, Beatrice Houston, Daryl George, Shelia Nelson, Ju-

nita Nelson, Ynell Nelson, Eilleen Peters, Emiel Flowers, Bruce Williams, LaWanda Duke, Amy Cooke, Pinky Guillam and Clint Henry; "Campus Beauties": Cynthia Stewart, Janetha Woods, Pamela Barnes, Barbara Bateman, Roberta Brown, Floretta Thomas, Rosalyn Simpson, Janice Payton, Wilma Burren, Tonya Hendricks, Shirley Pratt, Betty Hall, Joyce Locke, and Beatrice Houston.

Also eight additional coeds were included who will be featured in the "Campus Beauties" section: Sheryl Parker, Mavis Hardeman, Kathryn Leggette, Sondra Nicholas, Ada Simon, Tommie Matthews, Adrian Cooper, and Mary Munoz. Students for the "Most Fashionable" and "Campus Beauties" features were initially elected by the student body and later eliminated by a panel of faculty and student representatives.

### Kappas to Hold Founder's Day Observance Sunday

17, 1971 in the Memorial Student Center Auditorium. The Honorable Curtis M. Graves, Texas State Representative.

The Alumni and Zeta Beta Chapters of Kappa Alpha Psi Fraternity, Inc. will hold the Fraternity's FOUNDER'S DAY OB-

SERVANCE Sunday morning at 11:00 a.m., January 17, 1971. Representative will bring the Founder's Day Address. Rep. Graves is a graduate of Texas Southern University in Houston, Texas and was elected as State Representative in 1966 and has since served two terms.

Following the service at 11:00 a.m. and informal dialogue will be held between students at Prairie View and Rep. Graves until 1:00 p.m. At 2:00 p.m. a steak luncheon will be given in his honor in the Memorial Center Ball room. Keynote speaker for the honor's luncheon will be Harold J. Haynes, a member of the Fraternity and English major at Prairie View. Dr. Alvin I. Thomas will be present to present a citation on behalf of Prairie View to Rep. Graves.



**Rep. Curtis Graves** Founder's Day Speaker



**GIFTS AND GRANTS** — President A. I. Thomas receives \$4,000 check from Humble Oil representative F. E. Hoglund (top photo).

Representatives A. M. Doty, Pittsburg, Pa. home office and O. L. Royer of Port Lavaca.



Each and every year the Sociology Club presents a number of food baskets to needy families. Food baskets were presented prior to Christmas Day by Maragold Bias, chairman of the Prairie View Committee, Brenda Matthees, Robert Harris, Carolyn Kennard, and John Jackson, President of the Sociology Club. This food drive is sponsored by Sigma Omicron Chi (Sociology Social Service Fraternity). The sponsor is Mr. Jewel Tatum.

Reporter, Maragold Bias

## Pan Am Makes The Going Great

Ronald Pierre and Clarence Barnett are currently involved in Pan American Airlines Co-op Program, in Miami Beach, Florida. They will upon termination of the six month program return to school here at Prairie View A&M College.

A six month interval will then follow, after which they will return to Miami, New York, or San Francisco.

Mr. Pierre is mainly involved with trouble shooting Navigation Equipment and seeing that these components are kept up to date. Ron is currently working in the Avionics I. & E. Section where he is obtaining on the job training toward a future in Electrical Engineering.

Mr. Barnett is involved in Maintenance and trouble shooting components failure of the Aircraft Landing Gear System. He also is in charge of maintaining an up-to-date specification of Landing Gear Components. Barnett's stay in Miami has involved two jobs, first in Technical Data and later being promoted to his present position, Landing Gear, and Co-op Gear Assistant. He is receiving on the job training that will provide him with a projected future as an Industrial Technologist.

As a student at Prairie View, Mr. Barnett is an active member of the Newman Association, Epsilon Pi Tau, and Phi Beta Sigma Fraternity.

## New Board Members Named

CONTINUED from Page 1  
ments every two years.

Lewie, 42, is president of Waco Ready Mix Concrete Co., Inc., and Neeley Sand-Gravel, Inc., of Waco.

The 1950 civil engineering graduate is a native of Gainesville. He was commissioned in the U. S. Air Force at Texas A&M, serving in the Korean War from 1951 to 1953.

He is director of the National City Bank of Waco and the Rotary Club. He is a member of the City Planning Commission and the Episcopal Church of the Holy Spirit.

Lewie and his wife, Jackie, have two children: Kyle, 11, and Patricia, 14.

Bell, 53, has been president of Central Texas Equipment Co. since the company was founded in 1946. He also is president of Central Texas Bearing Service and a member of the Austin National Bank Board of Directors. He is a Baptist.

The Caldwell native received a bachelor's degree in liberal arts from Texas AM in 1939, and was commissioned in the Army Reserve. He served as an infantry officer during World War II, was wounded and left the service a major.

While attending A&M Bell was a member of the Aggie Band and was intramural sports manager.

Bell and his wife, the former Ruth Ryan of Caldwell, have one daughter, Mrs. John Sharkey of Houston.

Whittenburg, president of the Globe News Publishing Co., Amarillo, is a native of Plemons and graduate of the University of Texas, Austin.

He is a past president of the Texas Daily Newspaper Association, past president and member of the Amarillo Chamber of Commerce and Rotary Club member.

Whittenburg was first named to the board in 1959 and reappointed in 1965. A former board vice president, he currently serves as chairman of its Prairie View A&M College Committee.

Retiring director Cain, a 1913 A&M graduate, is chairman of the board of Aztec Oil and Gas Co. and Southern Union Gas Co.

The Athens native received Texas A&M's Distinguished Alumni Award in 1964.

Evans, 1921 A&M graduate, is a former agricultural banker. He now concentrates on farming and ranching interests in three states.

Evans was appointed to the board in 1959 and reappointed in 1965. He is a former board president.



Dean McNeil, Mr. Jackson, Mr. Wilson, Mr. Hooper.

## PV Grad Presents Grant From Celanese Chemical Co.

The Celanese Chemical Company of Bishop, Texas has awarded Prairie View A and M College an unrestricted grant of \$2,000. The grant was presented to the College by, Mr. James M. Jackson, an Alumnus of the school's Chemical Engineering Department. In presenting the grant to Vice President C. L. Wilson, Dean Alvin J. McNeil and Director of De-

velopment B. W. Hooper, Mr. Jackson stated, "I am pleased to present this check for \$2,000.00 to Prairie View A and M College on behalf of the Celanese Corporation involvement in your Industrial Cluster." In addition to this grant, we would like to make available to this institution our Technical Speakers Bureau and Chemicals necessary for use by students in your laboratories.

## Gifts and Grants

CONTINUED from Page 1  
student.

\*General Electric Management — A group of 49 managers gave \$20.00 each making a total of \$980.00. This will be matched with federal funds making a total of \$1,960 for scholarship purposes.

\*The Houston Endowment Inc. has donated \$10,000 in support of the baccalaureate Nursing Program. This grant will provide matching federal funds which will provide financial assistance for Nursing students.

\*The Gulf Oil Corporation sent a check for \$4,300. From this check, \$3,900 will be used for Engineering Scholarship and \$400.00 is for Engineering Development.

\*The Stauffer Chemical Company has made available to the Chemistry Department a grant in the amount of \$3,000. \$1,000 is to be used for Chemistry scholarships and \$2,000 is

for developments in the Chemistry Program.

\*The General Electric Foundation has contributed \$2,500 to the Engineering Department to be used for Engineering Development.

\*Dr. Orville F. Hill, Richland, Washington, has contributed \$100.00 to be used for scholarship for a needy Engineering or natural science student.

\*The Atlantic Richfield Company has donated \$2,500 which was delivered by Mr. F. W. Turner of Atlantic Richfield Company in Houston. \$1,500 will be used for unrestricted purposes and \$1,000 will be used for Engineering Development.

\*The Continental Oil Company presented a check in the amount of \$1,000 to be used for unrestricted purposes. The check was delivered by Mr. Howard Erb, Assistant to the Director for Recruiting and Mr. Dwight E. Woosley, also of Continental Oil Company.

## PV Alumnae Trains Teachers For Inner-City Schools

New Britain — A former Hartford school administrator is supervising a special educational program geared to train college students for careers as teachers in inner-city schools.

Mrs. Juanita Warren has been named supervisor of the off-campus training programs for teacher candidates at the Barnard-Brown and Vine Street schools in Hartford.

In addition, the college trains potential inner-city teachers at the Burritt, Smalley and Benjamin Franklin schools in New



Miss Juanita Warren

Britain, with a total of 41 students enrolled for inner-city programs this semester in both cities.

Mrs. Warren, a member of the college's Elementary Education Department, formerly served as vice principal of the Arsenal and North West Jones elementary schools in Hartford and as acting principal of Hartford's Clarence Barbour School.

Earlier, she was principal of an elementary school in Houston, Texas, and before that was a classroom teacher.

A native of Texas, Mrs. Warren holds her B. S. degree from Prairie View State College in that state and the master's of education degree from Texas Southern University. She has also carried out advanced study in school administration at Texas Southern.



BLUE BELL  
CREAMERIES

## COTNER INSURANCE AGENCY

and

## WALLER COUNTY TITLES, INC.

ALL TYPES OF GENERAL INSURANCE  
AND TITLE INSURANCE

We Have the Answer to All Your Insurance Needs!

MRS. M. COTNER GARRETT, Owner

## B. Schwarz & Son

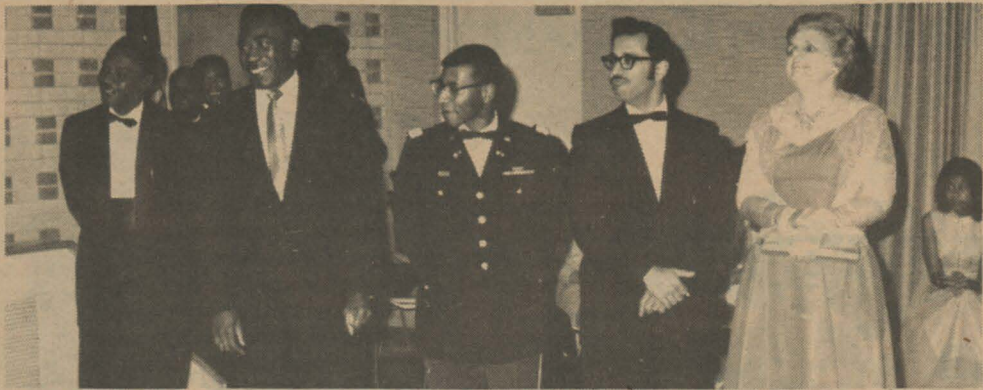
"97 Years of Continuous Service"

COMPLETE DEPARTMENT STORE

and

FURNITURE STORE

It's a pleasure doing business with you.



FACULTY DANCE COMMITTEE SEEMS TO BE WELL PLEASED — Part of the sponsoring committee for The Christmas Ball included (L to R), Hubert D. Smith, R. A. Carreathers, Tommy Osborne, S. R. Daruvallo, and Dr. Gwendolyn Grossman.

### Maj. Beuregard Brown Honored in Beaumont

A PV grad who earned one of two medals awarded by the government of The Republic of Vietnam, visited his home state and was honored, by his native city, Beaumont, and high school alma mater, Charlton Polard. After his graduation from high school, the future Major Brown entered Prairie View, from which he graduated with a bachelor of science degree with honors. He also received the President's Award as the graduating senior making the most outstanding

contribution to the College. He entered the army immediately after graduating from college. Among his most cherished medals in the Civil Actions Honor Medal, awarded to him by the Government of the Republic of Vietnam in 1968, "for demonstrating unusual brilliance and rare courage in initiating civic action programs to build schools, construct homes, and develop recreation areas for the Vietnamese people. To date, only two Americans have received this award;

Gen. William C. Westmoreland and Maj. Brown. Other Honors Other medals and honors earned by Brown include the Medal of Honor by the Government of the Republic of South Vietnam, the Bronze Star Medal, the U. S. Army Army Commendation Medal, the First Oak Leaf Cluster to the Bronze Star Medal and the U. S. Air Medal. He was named "Allied Soldier of the Year" by the Vietnamese-American Association and was awarded the Order of Military Merit by the Gov-

### Campus Winner Of Vega Test Drive Program

NEW YORK—Miss Janis M. Allen has been selected as one of the 523 student campus representatives in a national Vega test-drive program sponsored by the Chevrolet Division of General Motors Corporation.

Miss Allen has been asked to display the car around campus and give test drives to fellow students in exchange for the use of a new Vega for three months.

A Chevrolet spokesman explained the purpose of the program is to "allow students the first hand opportunity of seeing and driving the Vega which they believe, because of its styling, price and size is of particular interest to today's college student." Youth Marketing Inc. launched the Vega Test Drive Program for Chevrolet last spring, and drew on over 150,000 entry forms from students across the country. ernment of the Republic of South Korea.



SELECTING YEARBOOK FAVORITES — A Committee of students and staff members are pictured tallying judges' scores in the recent competition for campus beauties and most fashionable.

### System Heads

CONTINUED from Page 1

leges and universities in 11 states, including Texas. It also includes Mexico and Puerto Rico. The Commission on Colleges is composed of 54 members chosen from the representatives for each of the member institutions. The association has separate commissions for elementary, secondary and technical - vocational schools.

Dr. Williams also serves on the Executive Committee of the Council of the Federation of Regional Accrediting Commissions of Higher Education, with headquarters at Chicago. The organization develops accrediting policies for all regions of the country. The Texas A&M president was named to the additional term as Commission on Colleges chairman at the association's annual meeting in Atlanta. The one-year term is effective January 1.



## "Caution: too much of Sugarcane can cause you to rave endlessly about him and become a bore."

The above quote was lifted from Joe Klee's review of the new John Mayall album, "U.S.A. Union." It was written, in *Rock Magazine*, before Sugarcane's solo album was released.

You've probably heard Sugarcane's incredible electric violin playing, here and there, for years. He was Don of the innovative duo Don & Dewey. (They had a couple of hits, and It's A Beautiful Day wrote a song in their honor.) In addition to being featured on the "U.S.A. Union" album, Sugarcane toured with Mayall. He's played with Zappa and the Mothers (he's still recording with Zappa, check out "Chunga's Revenge"). And he's a regular part of The Johnny Otis Show (featured on Johnny's most recent album, too).

But never, before his new Epic album, could you hear so much Sugarcane all in one place.

Here's more from the Mayall Review:

"Completing the quartet is one of those amazing giants about whom I'm afraid to say much for fear of getting carried away into novella. I've been digging Sugarcane Harris on fiddle for a while now. It is only that I haven't had the chance to hear him live that keeps me from stating categorically that he is the greatest artist who ever touched horsehair to a gut. His swelling, swirling sounds can really engulf you in his musical journeys and sweep you involvedly along with them. Watch out—like I said—Sugarcane is habit forming."

#### Sugarcane Harris

including: I'm Unconscious/Do It Yourself/Funk And Wagner A Little Soul Food/Take It All Off



A whole album of Sugarcane, On Epic EPIC

# Things to Think About

By: Ruby L. Bradford  
Secretary, Athletic Department

A New Year, a new beginning for the most of us, but in our hearts there is still old past history of the 1970 year, what ever it may be, we have to now look ahead and say to ourselves "Peace on Earth and good will to all men."

Where ever there is war, let there be peace, where ever there is hate, let it now be love and where ever there is sadness, let there be joy.

It is true that there will be war, hatred, and sadness, but we have to over come these obstacles with faith, not only in ourselves, but in others as well.

We are all human beings with emotional feelings and responsibilities to our society in which we live.

Is this a "Dog Eat Dog Society, Survival of the Fittest or Peace and Good Will? Who is there to say, only you and I can answer this by doing our part with the learning experience, knowledge and getting involved to help make our new year resolutions come true.

In this year let's get involved to create a sense of togetherness in harmony and cheer.

"Let's not reach for the moon, when there is reaching on earth not touched."

— Peace —

## Dr. Perry: A Credit to His Alma Mater

Dr. Ervin S. Perry, 34, a 1956 graduate of Prairie View, died in Houston a little before the Christmas holidays.

Many have taken credit for the unusually outstanding qualities of this young man and Prairie View is due its rightful share. He has been cited on many occasions as a credit to his family, his hometown, his race, his state, and others. We at Prairie View are just as proud of Dr. Perry and just as sad in seeing

such a brilliant career come to an end.

He was the first Negro faculty member at the University of Texas and the first in any predominantly white southern university. He carried this honor well.

While his career ended early, Ervin Perry set a shining example of courage and determination at a time when it counted the most. He has left a high mark which PV students and graduates as well as countless others can reach for in many years to come.

## Waller School District Organizes Community Advisory Board

The time has come when we must call upon the most reflective and the most diligent minds to offer their talents in helping to develop better understanding among the school staff, the students, the parents and community groups in the Waller Independent School District. This was the theme of the Advisory Committee on Special Community Programs which had its Orientation and Planning meeting Wednesday, December 9th at the Waller High School. The committee is working through a Grant Award from the Department of Health, Education and Welfare.

The main features of the meeting were greetings from Mr. I. T. Holleman, Superintendent of Waller Independent School District and Mr. Henry Naegeli, Past-President of the School Board; A Positive Appraisal of the School-Community, prepared and presented by Mrs. Robbie Schultz, School Counselor; and intensive work session of the Advisory Committee on identification of needs and activities designed to meeting these needs.

Participants and resource persons attending the initial meeting were Mrs. Alvin Stasny, Dr. I. D. Starling, Mr. John Trimble, Mr. Gene Tomas, Mr. A. L. Puddy, Dr. Charles Urdy, Mrs. Iredene Lewis, Mr. Raymond Phillips, Capt. and Mrs. Tommy Osborne, Mr. D. R. Bloodworth, Mrs.



Scene from meeting of Advisory Committee on Special Community Programs.

T. A. Frey, Mrs. Erma Kendrick, Mr. Thomas God-

win, Mr. Herbert Schulz, Mr. Wayne Schultz, Mr. A. J. Glasco, Mrs. Dewey Fontenot. Student Representatives present were Karen Kendrick, Isabel Bazan, Harry Jeffery, Louis Schiel, Robert Lyons, Sherman Sanders, Marlene Niedson, Milton Machac, Angela Owens, Gerald Christopher, Paul Wood, Beverly Greeley.

H. T. Jones is coordinator for the program and Mrs. Margaret Massey is the secretary. For further information or questions about the program, they may be reached at 857-3311, Extension 382.

The next meeting of the Advisory Committee will be held on Wednesday, January 13 at Waller High School.

## Another Prairie View

Did you know that the present town named Bridge City, located in Orange, County near Port Arthur, was originally named Prairie View.

According to the story in the Orange Leader, the Bridge City Community was called Prairie View before the Rainbow Bridge was completed about 1936. Our name, according to history, came from one of the founding fathers around 1876.

Economy: A way of spending money without getting any fun out of it.

## Opportunities in Animal Science Announced

The Livestock Division of The U. S. Department of Agriculture will employ two groups of trainees who are Animal Science graduates in 1971.

Trainees are given orientation in all Division programs but most will become meat graders. There is an occasional opening in livestock and meat market reporting. The job location after training may be at any of our major field offices throughout the country, but we seldom have openings in the East and Southeast.

Trainees enter at the GS-5 grade, with an annual salary of \$6548. The 6-month training program involves travel to group meetings and temporary

assignments at three different field offices. They receive travel and subsistence allowances for about the first 3 months. Upon satisfactory completion of training, they are promoted to the GS-7 grade (\$8098) and assume regular grading or reporting duties. A year later they are eligible for promotion to GS-9 (\$9881), which is the journeyman level for most positions. Within the GS-9 grade, salary increases occur with satisfactory work performance up to a present top salary of \$12,842. Higher grade positions usually involve some supervision and selections are based strictly on merit.

## THE EPISCOPAL CHURCH

WELCOMES YOU

ST. FRANCIS' CHURCH AND STUDENT CHAPEL

(Adjacent to Campus)

Vicar: Father James Moore — 857-3590

SUNDAY SERVICE  
9:00 a.m.

SUNDAY SCHOOL  
10:15 a.m.

Tuesday 7:00 p.m.  
Saturday 10:30 a.m.

CANTERBURY CLUB  
Thursday 10:30 p.m.  
Evans Hall



Welcome to . . .

## Wyatts Chapel Baptist Church

Prairie View, Texas

1 Mile Northwest of the College)

FREE TRANSPORTATION TO CHURCH

SUNDAY SCHOOL 10:00 a.m.

MORNING WORSHIP 11:15 a.m.

LORD SUPPER Each 2nd Sunday

REV. E. W. (Ed.) McCULLOUGH, Pastor

REV. J. I. KIRKWOOD, Assistant

Phone 857-3230 — 857-3725 — 857-3533

## THE PRAIRIE VIEW PANTHER

Published Semi-Monthly in the Interest of a Greater Prairie View A. and M. College. The PANTHER serves as the voice of Pantherland.

- EDITOR ..... Geneva Chapman
- EXECUTIVE ASSISTANT ..... Linda Jackson and Linda Campbell
- ASSOCIATE EDITORS ..... Alfred Johnson, D. Anderson
- CREATIVE ARTS EDITORS ..... Portia Ward, Earnestine Phillips
- FASHION EDITOR ..... Pinky Guillam
- CONTRIBUTING EDITOR ..... Robert Calhoun
- CONTRIBUTING POET ..... John LaSand
- LAY-OUT EDITOR ..... Mary Brown
- COLUMNISTS ..... Leo Smith, Frank LaRex
- LETTERS TO THE EDITOR ..... Irma Paul, Attis Baker
- ASSISTANTS ..... Irma Paul, Attis Baker
- CHIEF COPY-WRITER ..... Linda Garrett
- ARTIST ..... Leodies Simmons
- CIRCULATION MANAGER ..... Dorothy Traylor
- SECRETARY ..... Mrs. Sarah Rice
- PHOTOGRAPHERS ..... Tod Godwin, Alton Edwards,
- SPORTS ADVISOR ..... Joe Booker
- FACULTY ADVISOR ..... C. A. Wood

Prairie View A&M College is open to all, regardless of race, color, religion, or national origin.

Any news items, advertising, or matters of interest to THE PANTHER may be presented to the Department of Student Publications, Room B-6 Administration, Extension 276-277.

NATIONAL ADVERTISING REPRESENTATIVE —  
National Educational Advertising Service  
360 Lexington Avenue  
New York, N. Y. 10017

Seely News Print

METHODIST STUDENT MOVEMENT  
invites your participation in  
**THE HOLY COMMUNION SERVICE**  
November 1, 1970 (Each First Sunday)  
4:00 p.m.  
in the  
**HOTEL CONFERENCE ROOM**  
(at top of the College Exchange)  
MSM Meetings Each Wednesday 6:30-7:30 p.m.  
Room 206 Memorial Center  
Counseling Tuesday, Wednesday, and Thursday  
Rm. 206 Memorial Center  
The Reverend Miss Perrie J. Jackson, Campus Minister





**COMMUNITY SERVICE** — Sociology students receive certificates of appreciation for their work with local Cub Scout Unit 141. LTC. Black is shown presenting awards. Students (members of Mr. Dabney's Class) are Sandra Bell, D. Salter, Donald Crockett, Perry Williams and Carolyn Haynes.

**My Neighbors**



"Look apprehensive, at least, son..."



Cub Scout Pack 141 (PV) pictured during December meeting. Mr. Cube Charleston is Cubmaster. Mrs. Ruby Bradford, Den Mother.

**Tri-Beta Honor Society Sponsors Holiday Party**

The Beta Beta Beta Biological Honor Society hosted a Christmas party given by the Biology Department for its majors. The event was well attended and everyone seemed to have enjoyed the evening. Refreshments included frappe, cheese dip, potato chips,

nuts, cookies and hot chocolate. The conversation piece was a Christmas tree constructed by using test tube holders containing test tubes filled with colored water. The "tree" was decorated with small, twinkling Christmas lights and was the brainchild of Jo Ann Baker. Instead of exchanging gifts, each person brought a food item and made it possible for a basket of food to be donated to a needy family.

The officers are: President - Jo Ann Baker; Vice-President - Roy Brown; Secretary - Ida Richardson; Treasurer - Nabaska Garner; and Historian - Patricia Chase.

**Correction**

The news story concerning Professor Robert E. Gibson published in the December 11 issue of the Panther carried an error (Typographical) in his title. Mr. Gibson is Associate Professor of Science Education.

**S&N SUPER MARKET**

WALLER  
MEATS — GROCERIES  
APPLIANCES — Sales and Service

**HUGE & WILD DISCOUNTS !  
STEREO RECORDS & TAPES**

SPEEDY SERVICE - SEND FOR YOUR FREE LIST.

THE STUDENT STORE P.O. BOX 64  
REDONDO BEACH, CALIFORNIA 90277

NAME \_\_\_\_\_

ADDRESS \_\_\_\_\_

ZIP \_\_\_\_\_

**CATHOLIC COMMUNITY  
PRAIRIE VIEW, TEXAS**

**CHURCH — ST. MARTIN de PORRES**

just a few blocks off Campus

SUNDAY MASS 10:00 a.m. - Free taxi to church outside of Evans between 9:30 a.m. - 10 a.m.

Transportation from Alexander Hall provided by Horace St. Julian, RM. 301, Alexander

DAILY MASS 5:00 p.m.

Confession before every Mass

Choir Metings on Sat. Night - Guitar Players Needed  
NEWMAN OFFICE (On Campus) - Rm. 206, Memorial Center (United Ministries)

Father Bowen has office hours, Tuesday through Friday, 9 a.m. - 3 p.m.

NEWMAN OFFICE (Off Campus) At the Newman Hall — Phone 857-3351

NEWMAN HALL — Open Monday through Friday, 3:30 p.m. - 10:30 p.m. — Saturday and Sunday, 1:00 p.m. - 10:30 pm.

**If you are a senior...**

**1971**

**could be  
the most important  
year of your life.**

As you contemplate one of the most important decisions of your life, you will want to remember this: it is not just "a job" you are seeking—it should be the beginning of a career. And if it is to be successful, both you and your employer must need and want each other.

To help you with your decision, we invite you to consider the opportunities at Pratt & Whitney Aircraft. Currently, our engineers and scientists are exploring the ever-broadening avenues of energy conversion for every environment... all opening up new avenues of exploration in every field of aerospace, marine and industrial power application. The technical staff working on these programs, backed by Management's determination to provide the best and most advanced facilities and scientific apparatus, has already given the Company a firm foothold in the current land, sea, air and space programs so vital to our country's future.

We select our engineers and scientists carefully. Motivate them well. Give them the equipment and facilities only a leader can provide. Offer them company-paid, graduate-education opportunities. Encourage them to push into fields that have not been explored before. Keep them reaching for a little bit more responsibility than they can manage. Reward them well when they do manage it.

Your degree can be a B.S., M.S., or Ph.D. in:

- MECHANICAL ENGINEERING
- AERONAUTICAL ENGINEERING
- ENGINEERING SCIENCE
- ENGINEERING MECHANICS

If your degree is in another field, consult your college placement officer—or write Mr. Len Black, Engineering Department, Pratt & Whitney Aircraft, East Hartford, Connecticut 06108.



**Pratt & Whitney Aircraft**

EAST HARTFORD AND MIDDLETOWN, CONNECTICUT

DIVISION OF UNITED AIRCRAFT CORPORATION



An Equal Opportunity Employer

# Kollar Korner

## The New Year Journey

Rev. I. C. Gordon



Gordon

TEXT — Phillipians 3:13 Brethren. I count myself to have apprehend: but this one thing I do, forgetting those things which are behind, and reaching forth unto those things which are before, Verse 14- I press toward the mark for the price of the high calling of God in Christ Jesus.

The glad New Year is here at last. The Old Year, with its heartaches and disappointments, sins, and failures, is a thing of the past and the New Year has become the time of beginning again.

We are all voyagers over the sea of time to another world, to eternity; very soon, we shall make the haven of eternal rest, and dwell in the mansions of bliss. And so I urge you today as you venture into a society where people drag, whine, complain, pity themselves or nurse some kind of hurt all through life; to let go of everything that is unpleasant, all the mistakes, all the disagreeable past, and rise up in arms against the enemies of your peace and happiness and look to the hills, look to God. Don't be hasty in finding fault of others. Work more and complain less. No matter how discouraging things look around you, learn to dominate your environment, to rise above the depressing influences; turn your back on the darkness and face the light.

As we start on the New Year Journey, we must decide what things to take with us, and what things are to be left behind:

1. What to leave behind:
  - A. Indifference which is the quality of being indifferent - - lack of feeling for or against anything. Luke Warm.
  - B. Iniquity - - sin and covetousness, evil company, leave behind iniquity of irreverence for the Sabbath.
  - C. Leave behind iniquity of procrastination - - stop putting off what you can do today and begin doing that which is at hand.
  - D. Please shut the door, on yesterday's failures, on yesterday's sins, for your soul's health, for the sake of others and for the sake of Christ's great cause. Leave the past with God in Christ and move with him today.

Trust in the Lord Jesus Christ for strength - - For the traveler who trust in the Lord of the encircling years, it will be a journey guided by infinite wisdom and love.

We may fail and falter, retreat and weaken on the journey but God will never fail, nor will his divine providence grow weary.

II. What to take along  
The New Year is a receptacle; and as we approach it, we have an opportunity to put something into it.

At last we must bring, we ourselves, our desire for

order; and if we cannot create life, at least our hope should be to save and foster what remains and to bring it to something better.

The call of the New Year is a call to noble living. If you are a Christian, will you not promise to be more devoted to the master than you have in the past?

A. Take along the shield of faith, where with you shall be able to quench all the fiery darts of the wicked.

B. Take along love Galations 6:10 - - As we have therefore opportunity, let us do good unto all men especially unto them who are of the household of faith.

God has manifested his infinite love and supreme benevolence toward us. Yea, what kindness, mercy, and forbearance God exhibits to poor, sinful, degenerate, rebellious, mortal men.

So, then as we have opportunity, time, place, and power, let us do good to all, especially to those who repent, believe, and confess Christ.

True Christians are the salt of the earth, and the light of the world.

Man was made to love - to love God, to worship God; to love his neighbor as himself; to obey God, and to bless all men. Here in is charity, benevolence, religion, happiness; without these precious virtues man is undeveloped, unsuccessful, and dissatisfied.

Benevolence is a vital principle in Christianity. The Sun, Moon, Stars, Clouds, rain and rainbows, earth, ocean, mountains, plains, times and seasons, fire, winds and water, beasts, fish, and flying fowl, praise God, and manifest his wisdom, power and love.

Love is the doorway through which the human soul passes from selfishness to service and from solitude to kinship with all mankind.

1. The law of love means that bickering must cease.
2. Practicing the law of love means caring for the unattractive. It may mean doing good to those who oppose or dislike us.

Let us listen to Paul in I Corinthians 13:1

1. Yes Love suffereth Long.
2. Love is kind
3. Love Envieth not
4. Love thinketh no Evil;

We have got to wake up before it is too late, we have got to reach down and pull up our Spiritual socks, we have got to dust off a few old fashion words like sin, greed, selfishness and dishonesty AS WE START THE NEW JOURNEY.

## Dr. Woolfolk Presents First Lecture In AROTC Program

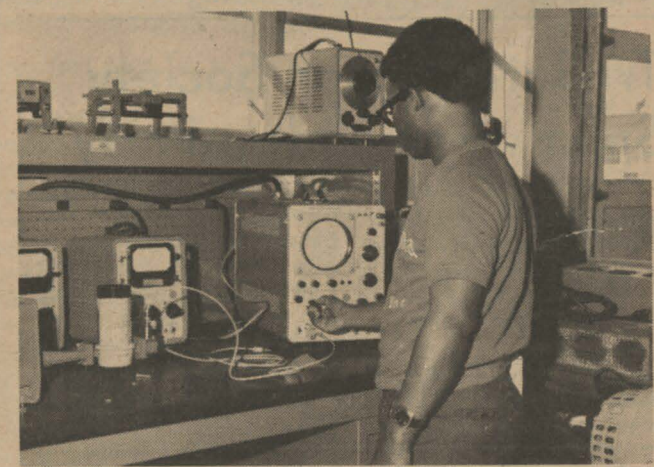
On the 10th of December, Dr. George R. Woolfolk Chairman of the Department of History, Prairie View A&M College discussed the interaction between the American Military System and the American Economy with the Officers and men of the Second Battalion, Army ROTC Brigade. His lecture, which covered the period from 1770 to 1898, was the first of a series in the Army ROTC Enrichment Program. These lectures will enrich the Army ROTC curriculum by giving cadets an opportunity to exchange views on national security affairs with prominent scholars. This program is designed to complement regular classroom instruction, broaden the cadet's knowledge, prepare students to be better, more informed citizens, and to increase the junior officer's ability to provide for a com-

plex world. The Army ROTC Enrichment Program is funded by the National Security Information Center, a non-profit, non-government organization which coordinates with the US Army for on-campus presentations.

Lieutenant Colonel Vernon R. Black, Professor of Military Science, who mirrored in History as an undergraduate at Prairie View, joined the cadets and their instructors in a standing ovation at the conclusion of the lecture. LTC Black announced that the thunderous applause which greeted Dr. Woolfolk and the equally enthusiastic reaction of the cadets forecast a very successful program. Dr. George R. Ragland will present the second lecture of this series in April. The Prairie View Family is invited to join the Army ROTC in this enrichment experience.



MICROWAVE SEMINAR — C. W. Miller III (3rd from left), Hughes Aircraft representative, who is serving as a consultant to Prairie View A&M College is shown greeting representatives from Hewlett Packard Company during the Microwave Seminar presentation. The Hewlett Packard representatives are (l to r) E. G. Byres, Ed Dobranich and Cliff Jones.



Osie Combs, electrical engineering student, is shown observing characteristics of microwave signal during Hewlett Packard Microwave Seminar presentation.

## Reynold's, The Key To Panthers 1971 Cage Season

By Joe Booker

Raymond Reynolds, Prairie View's 6-8 1/2 sophomore center from Cleveland, Ohio, doesn't know it, but the greatest part of the Panthers 1971 success will depend on his performance. His coach, William Cofield feels he has unlimited talent and potential.

"Reynolds has done a fine job," stated Cofield. He does a spasmodic job, though". One game he does a great job and another he does average, but I think this is just sophomoreitis," Cofield continued.

The thing that Cofield likes for Reynolds to do is have that killer instinct. As the old saying in the Southwestern Athletic Conference: "Kill an ant with an axe". Well, Cofield doesn't exactly advocate axes for his players - although in some cases he would admit it would help - - What he wants Reynolds to do is be tough in every game.



R. Reynolds

"He has a tendency to play good against a good team and play average against a bad team", stated Cofield. "I think he has great potential. If we can get more consistency out of him in each game that would give us that extra needed to get to the top."

Against Fisk in the Chicago tournament, Reynolds showed that extra and Fisk may have thought that Co-

### WARD'S PHARMACY

"YOUR REXALL STORE"

Waller County's Most Progressive and Most Modern Drug Store

Telephone VA 6-2445 Hempstead, Texas

### Marshall Chevrolet

Your Authorized Chevrolet Dealer



Sales Service

Phone VA 6-2411 Hempstead

HERE IT IS!

## EYEGGLASS SERVICE

Right on The Campus

- COMPLETE OPTICAL SERVICE
- GLASSES FITTED
- LENSES DUPLICATED
- FREE ADJUSTMENTS

Make Appointment With Mrs. E. C. Fuller Gordon

Hospital Service

Ext. 363

Wednesday 8:30 a.m. to 1:00 p.m.



Lt Niley Rosemond USMC (right and Ullyses Bell

## AROTC Grad Visits Campus

2nd Lieutenant Niley Rosemond, USMC, a 1970 Prairie View NROTC graduate recently spent a week visiting on the campus. Lieutenant Rosemond was a member of the first class to be commissioned at Prairie View through the NROTC program. He was one of three Prairie Viewites to be commissioned in the Marine Corps and he was the only member of his NROTC class who received a regular commission.

Lieutenant Rosemond received his B. S. in electronics technology, and was greeted warmly on his return by Dean S. R. Collins on the faculty of the School of Industrial Edu-

cation and Technology.

While on the campus, Lieutenant Rosemond addressed classes in industrial technology, military science, and naval science. He also spoke with the Junior Fellow organization and with Epsilon Pi Tau Honor Society.

Lieutenant Rosemond recently completed the Marine Corps' six month basic school at Quantico, Virginia. His next assignment is to flight school at Pensacola, Florida. Lieutenant Rosemond expects to be designated a Marine aviator after approximately eighteen months of flight training.

## AROTC Commander Wins Wings

On December 15, 1970 Cadet Colonel Theodore Brown became the first cadet in the AROTC Flight Program to solo this school year. Cadet Colonel Brown accomplished this feat after only 10 hours of flight instruction and 10 hours of ground school.

This note-worthy accomplishment qualifies C/Col. Brown to add the double wings of an ROTC Aviator to the full row of ribbons he has won in four years of Army ROTC. He can now qualify for an FAA pilot's license after 25 more

hours of instruction. Six other cadets are now wearing the half wings of an ROTC flight student. They are C/Col James Cheatham, C/Cpts Otis Clayborne, Clifford Gardner, Gregory Stevens, Robert Evans, and C/1Lt. Daniel Taylor. These cadets are flying a Cessna 150. They receive instruction from a civilian agency, as an extra curricular activity.

The ROTC Flight Program is restricted to senior AROTC cadets. Those who successfully complete flight instruction must apply for Army flight training after graduation and commissioning. During Army flight training and while on duty as an Army Aviator these young men will receive an additional \$110 per month. This flight pay is increased as the aviator gains more experience and more rank. Anyone interested in the flight program should contact Major Lewis Johnson, the Army ROTC Flight Program Advisor, or their AROTC instructor.



Cadet Comm. Brown

## Womens Intramural Basketball Schedule

January 20 ..... Collins vs. Suarez  
5:30 p.m. Old Gym

Jan. 21 ..... Winner of Collins-Suarez vs. Banks Hall  
5:30 p.m. Old Gym

Games Completed:  
Pantheretts vs. Tigeretts,  
Banks Cavaliers vs. Banks Wildbunch  
Hornets vs. PV Swinging Team

## PRESCRIPTIONS - DRUGS

Where You Get More Than Just  
A Welcome and Good Service

## CITY DRUG-HEMPSTEAD

826-2496 W. W. Wilkes, Owner



P. V. RIFLE TEAM AND ADVISORS — Kneeling left to right: Walker, Watkins, Chatman, Littleton, Castillo; standing left to right: SFC Ball, team NCO Advisor; LTC Andrews, AROTC Officer; Maj. Johnson, team Advisor.

## Campus Rifle Team Competes in Army Matches

Prairie View A. and M. College recently participated in the Fourth U. S. Army Annual ROTC Rifle match at Fort Sam Houston in San Antonio, Texas. Buddy Walker was high scorer. He was followed by Cadet Lt. Florentino Cas-

tillo (Team Captain), Cadet Thomas Chatman, Cadet Albert Maxie, and Cadet Donald Littleton. The team's next competition will be at Texas A. and I. in Kingsville on 16 January 1971.



## Xerox: For people who think of more than their jobs.

Like Andy Parks... who believes in playgrounds. As a member of the Bronx Community Planning Board, he convinced the City government to build this one.

Things like this are typical of Andy. Because he really cares. And translates that caring into action.

"I'm used to it. Worked my way through school, played football, and kept up with 10 other activities. It seems once you start getting involved, people just keep looking to you."

And people do look to Andy. For advice, help and participation in activities ranging from local politics (he ran for Councilman-at-Large in the Bronx last year) to the Boy Scouts of America.

"Scouting serves as an outlet for me in a lot of ways. When I was a scoutmaster, the one-to-one contact with the boys was great. Now I plan programs and present them for approval. In a way, I guess these activities and my career mirror each other. I'm success-oriented and I suppose I like outlets that make me reach."

Andy joined Xerox as a Sales Trainee in September 1969, and completed what is usually a 6-month course in just four. As a Sales Representative for our Business

Products Group, he now covers the lower Manhattan area selling copier/duplicators.

But success isn't the only thing that motivates Andy Parks. People, and what he can do for them, play a vital part in his life. "A lot of the businesses I sell machines to are small. I have to show them how the Company wants to help them. Not just sell them a product."

Andy Parks has the kind of commitment and involvement Xerox stands for. And looks for. If you're looking for this kind of environment, why not investigate a sales career in one of our many offices throughout the U.S. Send details of your education and experience to the Employment Manager in the area of your choice:

**NORTHEAST:** 445 Hamilton Ave., White Plains, N.Y. 10601

**MID-ATLANTIC:** 1911 N. Fort Myer Dr., Arlington, Va. 22209

**SOUTHERN:** 3636 McKinney Ave., Dallas, Texas 75204

**MIDWEST:** 3000 Des Plaines Ave., Des Plaines, Ill. 60018

**WESTERN:** 2200 E. McFadden Ave., Santa Ana, Calif. 92705

If your degree is in Engineering, Science, Business Administration or Liberal Arts, you may qualify for openings in fundamental and applied research,

engineering, manufacturing, programming, administration and marketing at the Rochester, New York facilities of our Business Products Group.

If you are interested in **ROCHESTER OPENINGS**, fill in the coupon, attach a resume of your experience and education and forward to Mr. Howard Bond, Xerox Corporation, P.O. Box 1995, Rochester, New York 14603.

|                   |                    |
|-------------------|--------------------|
| Name              | _____              |
| Address           | _____              |
| School            | _____              |
| Year Graduated    | _____ Degree _____ |
| Field of interest | _____              |

# XEROX

An Equal Opportunity Employer (m/f)

24-HOUR SELF SERVICE

at

## HEMPSTEAD WASHATERIA

Top Loading Speed Queen and Philco-Bendix  
Machines

Bank and Post Office Block — Hempstead, Texas

VA 6-8159

Your Patronage Appreciated





**JACKSON GAME** — PV in control above, but Jackson State eased past the Panthers 93 to 85 in closing minutes.

## PV-TSU Shootout Resumes

Thursday night at 7:30 in the Prairie View Panther fieldhouse the annual PV-TSU shootout will resume.

The Panthers and Tigers have already met twice, both times in tournaments. The Tigers caught the Panthers by surprise in the PV tip-off tournament and won 83-82. The two rivals met again in a tournament, but the site was Chicago and the Panthers dumped the Tigers 101-100.

The PV-TSU grudge affair carries more than a rivalry. The two clubs are vying for the SWAC crown

and the N. A. I. A. District 8 South Zone Championship.

Last season the Tigers won 114-76 in Houston in the first contest and the Panthers won 88-74 at Prairie View.

TSU returns everyone from last year's squad but All-American guard Herbert Hart. Prairie View returns but Tommy Ricks and Carl Settles.

Prairie View is paced by former Houston-Lee All-City performer Walter McCowan and its flashy sophomore guard Herbert "Little Magic" Guin. Raymond Reynolds (6-8), Tommy Keys (6-9), Ron Bradshaw (6-6), Myron Rogers (6-0), Leroy Gamble (6-5), James Milledge (6-5), and Lawrence Johnson (6-8), make up the rest of the Panther squad.

Guin has been outstanding in all of the Panther games against TSU. In the Chicago tournament which PV defeated TSU 101-100 for the Championship Guin poured in 31-points.

On Saturday night, the shootout resumes in Houston at TSU's Adam's Gym at 8 p.m.

Two kids were in a museum looking at a mummy. Underneath the mummy's figure was a sign reading 208 B. C. One kid said, "I wonder what that means?" The other lad guessed: "It's probably the license plate of the guy that hit him."

Defeats TSU 101-100 In Finals

# PV Wins Chicago Tournament

After a slow start, the Prairie View Panther cagers picked up in the Chicago Invitational Tournament over the Christmas holidays by winning the tournament.

The Panthers, paced by the scoring and rebounding of Walt McCowan, Raymond Reynolds and Ron Bradshaw along with the playmaking and scoring of Herbert "Little Magic" Guin, the Texans from Pantherland walked away with the big first place trophy. The Panthers met Fisk in the first game and had a little trouble, but won 99-96. The second contest, which saw Cofield's crew do the unexpected defeated Savannah State with four men on the floor for the last four minutes, by a 119-118 score. The other six Panthers fouled out, including Walt McCowan who had scored 36 points.

In the finals, the Panthers met familiar faces when they met the TSU Tigers and Cofield's crew — the Mod Squad — were seeking a revenge from the Tigers who had defeated them at the Little Dome, 83-82. It was another game, at another site and the occasion — a tournament — was the same.

The Panthers dumped the Spacecity Tigers 101-100. Herbert Guin was the

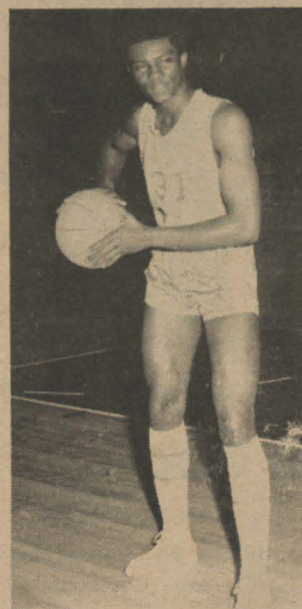
big man in the game as he poured in 31 points (his all-time college high). Ron Bradshaw, who had a great tournament followed with 22 points and Raymond Reynolds had 17 and Don Dyer, had 12, to round out the Panthers scoring in the double figures.

McCowan and Guin, were named to the All-Tournament team for the Panthers. Cofield was upset when he found out that his star guard Herbert Guin didn't win the MVP award.

"As far as I am concerned, Guin was the most valuable player," stated a disgusted Cofield, who's team has won 5 in a row at this writing. "But I don't want to overlook the performance of Reynolds, Bradshaw and McCowan," he continued. "Bradshaw, was the surprise of the tournament," concluded Cofield.

Cofield pointed to several reasons for the Panthers five game winning streak.

"I think the key to winning the close games and losing has been the unity and the contribution of the bench," he stated. "We have had injuries and sickness in each of our first nine games," he said. "We are also beginning to improve in our over-all game. "That is, we are more consistent rebounders, scoring better inside and the team



**Ron Bradshaw**, was outstanding in the Chicago Tournament. Scored 22 against TSU in the finals.



**Herbert "Little Magic" Guin**, led PV attack in Chicago Tournament. Guin scored 31 against TSU in the finals. He, along with McCowan, was named to the All-Tournament Team.

is thinking and reacting better on the floor," he added.

## PV Wins With Four Players

Chicago (UPI)— Prairie View A&M, playing the last four minutes, with just four men, whipped Savannah State of Georgia, 119-118, Sunday night to advance to Monday's title game in the Chicago Christmas Classic College Basketball Tournament.

Prairie View will meet Texas Southern for the championship.

Texas Southern was an 86-83 victor over Lemoyne-Owens of Tennessee in another Sunday night semi-annual game.

Six Prairie View players fouled out in the game with Savannah State, forcing the victors to hang on without a full team on the floor.

## PV Downs Southern 86-73

By Robert Dean, Sports Editor

Coach Richard Mack and his nifty Southern Jaguars invaded the mighty Panther den of Prairie View, Thursday, January 7, 1971. Only to find cold weather outside and a "fired up" Panther team on the inside. Ron Bradshaw, sophomore 6-4, 205 pounder from Wankegan, Illinois, led the Panthers with 9 field goals and five of nine free throws, for a total of 21 points, 16 of which came in the first half of play. Herbert Guin, N. A. I. A. 1969-70's number one field goal shooter, took third in scoring with 16 point and eight rebounds; preceded by Tommy Keys with 18 points.

The Panthers began a loose first half with Bradshaw scoring 16 of his 21 points. Southern Gary Lewis led the Jaguars with 14 points. The Jaguars had three other members to net double figures in

Russell Jackson, Ulyses Jones, and Theodore Lindsay each shooting 12, 12, and 10 points respectively. With the opening tip-off, PV opened a quick 6-0 lead never to have it relinquished. The Panthers sustained leads of 5, 11, and back 1 point before retiring to the dressing room at half time with a nine point lead.

As the second half got on the way, Myron Rogers, Panther 6-0, 170 pound guard, displayed excellent team work as he teamed with Herbert Guin to keep the "fast break" type game rolling as each scored 10 points in the latter half. Raymond Reynolds lead in rebounds as Prairie View racked up some 86 points. Prairie View FG FT TP  
McCowan .....4 3-3 11  
Keys .....8 2-2 18  
Reynolds .....2 2-2 6  
Guin .....7 2-4 16  
Bradshaw .....8 5-7 21  
Rogers .....6 2-4 14  
Total .....35 16-22 86

## Final Examination Schedule

FIRST SEMESTER 1970-71  
MONDAY, JANUARY 18

| Subject           | Exam Time      |
|-------------------|----------------|
| 4:30 MWF Classes  | 7:30-9:30      |
| 7:30 TThs Classes | 9:30-11:30     |
| All Eng. 113-123  | 11:30-1:30     |
| 7:30 MWF Classes  | 1:30-3:30      |
| 11:30 MWF Classes | 3:30-5:30      |
| All Pol. Sci. 113 | 6:00-8:00 p.m. |

TUESDAY, JANUARY 19

|                           |                |
|---------------------------|----------------|
| 3:30 MWF Classes          | 7:30-9:30      |
| All Chem. 114-124         | 9:30-11:30     |
| 8:30 MWF Classes          | 11:30-1:30     |
| 10:30 TThs Classes        | 1:30-3:30      |
| All Soc. Sci. 113 Classes | 3:30-5:30      |
| All Pol. Sci. 123         | 6:00-8:00 p.m. |
| B. A. 553                 | 5:30-8:30 p.m. |
| Ed. 853                   | 5:30-8:30 p.m. |

WEDNESDAY, JANUARY 20

|                                |                |
|--------------------------------|----------------|
| 8:30 TThs Classes              | 7:30-9:30      |
| 11:30 TThs Classes             | 9:30-11:30     |
| 1:30 MWF Classes               | 11:30-1:30     |
| 12:30 TTh                      | 1:30-3:30      |
| 2:30 MWF Classes               | 3:30-5:30      |
| All Concepts of Health Classes | 6:00-8:00      |
| Guid. 583                      | 5:30-8:30 p.m. |

THURSDAY, JANUARY 21

|                      |                |
|----------------------|----------------|
| 9:30 MWF Classes     | 7:30-9:30      |
| 1:30 TTh Classes     | 9:30-11:30     |
| 10:30 MWF Classes    | 11:30-1:30     |
| 12:30 MWF Classes    | 1:30-3:30      |
| All 3:30 TTh Classes | 5:30-7:30      |
| 9:30 TTh Classes     | 3:30-5:30      |
| Psy. 593             | 5:30-8:30 p.m. |
| All 3:30 TTh Classes | 5:30-8:30      |
| All 4:30 TTh Classes | 5:30-8:30      |
| Ed. 4 843            | 5:30-8:30      |
| P. E. 633            | 5:30-8:30      |

Graduate Classes

SATURDAY, JANUARY 23

|               |            |
|---------------|------------|
| 8:30 Classes  | 8:30-11:30 |
| 11:30 Classes | 11:30-2:30 |

All Physical Education Practice Examinations are scheduled Thursday, Jan. 14, from 6:00-8:00 p.m., as announced by instructors. All military science examinations are scheduled Jan. 14, as announced by the Department. All French 113 examinations Sec. 1, 2, 3, 4 and 5 will be administered from 5:30-7:30.

## BEAUTY AND THE BUDGET

My personal Care Salon is Staffed with a thoroughly trained Professional Hair and Wig Designer, who realizes each woman is a unique individual who will show you that true beauty is a "special look", not a high price tag.

WEDNESDAY ONLY  
SPECIAL DISCOUNT DAY

OPERATOR: Evelyn Mitchell Frederick  
LOCATION: Greyhound Bus Depot  
PHONE: 857-3509  
TIME: 8 a.m.-Until  
Tuesday — Saturday

PATRONIZE —

## OUR-WAY OF HOUSTON, INC.

(A BLACK ENTERPRISE)

Henry Bostic — General Manager  
(PV Grad, 1965)

## Good Friends to Know

### TEXAS STATE OPTICAL



Offices Throughout Texas