

Prairie View A&M University

Digital Commons @PVAMU

---

PV Panther Newspapers

Publications

---

2-10-1970

## Panther - February 1970- Vol. XLIV, NO.10

Prairie View A&M College

Follow this and additional works at: <https://digitalcommons.pvamu.edu/pv-panther-newspapers>

---

### Recommended Citation

Prairie View A&M College. (1970). Panther - February 1970- Vol. XLIV, NO.10., *Vol. XLIV, NO.10* Retrieved from <https://digitalcommons.pvamu.edu/pv-panther-newspapers/64>

This Book is brought to you for free and open access by the Publications at Digital Commons @PVAMU. It has been accepted for inclusion in PV Panther Newspapers by an authorized administrator of Digital Commons @PVAMU. For more information, please contact [hvkoshy@pvamu.edu](mailto:hvkoshy@pvamu.edu).



# PANTHER

## A&M COLLEGE of TEXAS

VOLUME XLIV, No. 10

Prairie View, Texas

FEBRUARY 10, 1970



### Bishop Morkovsky Dedicates Prairie View's Newman Hall

Newman stresses as its goal the realization that everyone on the secular campus of whatever denomination is called not only to follow Christ, but rather to lead for Christ, Father W. Dayton Salisbury, S. S. J., told over 500 persons gathered here last Sunday for the dedication of the new St. Martin de Porres Newman hall of Prairie View A&M College.

Father Salisbury, a former Newman chaplain at Prairie View A & M and now chaplain at Texas Southern University in Houston, delivered the main address. Bishop John L. Morkovsky blessed the interior and exterior of the \$38,000 metallic building. The inside is paneled with walnut and the facility can be divided into two sections by sliding doors.

Within the 5000 square feet of space will be contained a reading section, a kitchen, pool tables, and recreation facility. The hall will serve the entire community and was built to be a functional structure.

Dr. A. I. Thomas, president of Prairie View A&M, enumerated the people who laid the groundwork that finally exhibited itself in the frame of Newman hall. "The dedication of this beautiful hall must be a commitment to something greater," said Dr. Thomas.

He charged those present with the responsibility of supporting the new St. Martin de Porres hall financially and physically. Dr. Thomas said that the new hall will have as its central purpose to function for the greater glory of God. He added that the structure will assist in making better Christians of the students and the community.

Newman chaplains and representatives from secular campuses throughout the Diocese of Galveston-Houston were present for the dedication.

Bishop Morkovsky told those present that "in a college community this new building and other buildings which represent religion are most important."  
*See DEDICATION, Page 2*

### A&M Board Meets

## Aides Given Pres. Rudder's Duties

Texas A&M University System directors named three vice presidents Saturday to share responsibilities for operating the system during the absence of President Earl Rudder, who is ill in Houston after a stroke.

W. C. Freeman, vice president for business affairs, regated to act for Gen. Rudder in matters pertaining to the Texas A&M University System.

Dr. Horace R. Byers, academic vice president, was given responsibility for academic affairs of Texas A&M University.

Tom D. Cherry, vice president for business affairs, received responsibility for conducting the university's business affairs.

Rudder was listed in serious condition Saturday night at St. Luke's hospital after undergoing surgery Friday for "control

of gastric bleeding consequent to cerebral hemorrhage."

He suffered a stroke at his home in College Station January 29.

The board's resolutions made the appointments effective "until further notice."

The appointments were made at an extraordinary called session of the directors.

Rudder is president of Texas A&M and the university system.

The system includes A&M, Prairie View A&M College, Tarleton State College, Texas Maritime Academy, and the Texas Agricultural Experiment Station, Texas Agricultural Extension Service, the Texas Engineering Experiment Station, the Texas Engineering Extension Service, the Texas Transportation Institute and the Texas Forest Service.

## General Electric Foundation Aids School of Engineering

Prairie View A and M College is one of five predominantly Negro engineering colleges to receive \$15,000 in General Electric Foundation grants over a three-year period, according to Dr. Donald J. Watson, secretary of the Foundation.

Grants of \$5000 a year for three years will also go to the following schools: Tuskegee Institute, Tuskegee, Ala.;

Southern University, Baton Rouge, La.; North Carolina A and T State University, Greensboro, N. C.; and Tennessee State University, Nashville, Tenn.

Dr. Watson said that the funds will be made available to the dean of each school for faculty development and improvement or for support of students as the particular needs of each school dictate, and that the General Electric Foundation will work closely with the American Society for Engineering Education to help the schools obtain maximum effectiveness from the funds.

The ASEE has been working with predominantly Negro engineering colleges since 1965, arranging faculty exchanges between those colleges and certain major engineering schools for the sharing of ideas and experiences and as an aid in obtaining accreditation for the Negro  
*See GENERAL ELEC., P. 5*

**DON'T FORGET  
YEARBOOK  
MATERIALS  
NEEDED NOW**



**ENGINEERING GRANT** — Representatives of Mobil Oil Corporation shown presenting check to President A. I. Thomas for the School of Engineering. Other Prairie View Staffers pictured are

Herman Jones, Placement Director, J. R. Phillips, Professor of Mechanical Engineering and A. E. Greaux, Engineering Dean.

### February Calendar Girl



Miss Addie Adams, Senior Biology Major from Hearne, Texas, was selected by the Panther Staff as this week's Calendar Girl.

## Second Semester Underway Registration Closed Monday

February 9 was the final day for registration and change of program in the new semester which started officially on February 2.

Class activities fall into full swing this week following several days of adjustments as the Second Semester gets fully underway.

Opening activities have included a Faculty Conference, orientation programs for entering students and registration which was held on January 28-31. Two general convocations for all students were held in addition to several other special programs and social activities.

## AKA Graduate Chapter Plans Special Activities

The local graduate chapter of Alpha Kappa Alpha Sorority will sponsor several events during the week-end of February 28.

The groups annual Debutante's Ball is scheduled Saturday night, February 28. The Sunday, March 1 date will be the observance

of Founder's Day. Activities will include Chapel service, a luncheon and reception.

AKA has sponsored the colorful Deb's Ball for many years.

The group will have a special speaker on hand for Founder's Day.

## Ministers Conference Closes, All Faiths Chapel Endorsed

A resolution giving full endorsement of a recommendation to build an All Faiths Chapel at Prairie View A&M was made by the 11th Annual Minister's Conference meeting here last week.

An All Faiths Chapel was recommended by the Prairie View Centennial Council in its final report issued in January. The Council urged that the Chapel be established at the earliest date.

The Rev. Floyd N. Williams, 1969-1970 Conference Chairman has agreed to serve as chairman of a fund drive in connection with the All Faiths Chapel, the Rev. W. Van Johnson has announced.

The Ministers' resolution also endorsed the recommendation by the Council that the College continues to be developing and expanded as a residential college for all students regardless of race, religion or color.

Ministers listed as en-

dorsing the resolution for the full membership included the Revs. Williams, M. L. Price, N. S. Brown and E. S. Branch (Baptist); A. J. Hines and Bishop E. R. Ranger  
*See MINISTERS, Page 2*



Rev. F. N. Williams, Houston Pastor and head director for all faiths chapel.



AREA AG LEADERS MEET — Members of the Executive Committee of the Big 8 Resource Conservation and Development Project are pictured with President Thomas during a meeting held by the group on the Prairie View Campus. The membership represents the following counties - - Brazos, Robertson, and Madison.

# Federal Minimum Wage Raised Pay For Millions

Some 2,100,000 workers received pay increases amounting to \$486 million for the year beginning February 1, 1970, Wage-Hour Administrator Robert D. Moran announced today. The increases are due to a Federal minimum wage boost from \$1.30 to \$1.45 an hour for workers who were first brought under coverage of the Fair Labor Standards Act in 1966.

said the \$486 million that workers stand to gain will benefit many members of minority groups working in low-wage jobs.

Moran said the increase in the minimum wage rate will not have an inflationary impact on the economy since it increases the annual wage bill of all covered employers by only 0.2 percent.

The \$1.45 rate will apply chiefly to employees of smaller retail or service establishments, laundries and dry cleaners, hotels, motels and restaurants, schools, non-Federal hospitals, and nursing homes.

The new minimum remains in effect until February 1, 1971, when it will go to \$1.60 an hour. The \$1.60 rate already applies to 35,366,000 workers in employment who were subject to the Act before the 1966 Amendments.

Administrator Moran

## Dedication

CONTINUED from Page 1 ant.

"A university must be interested in the character and religious formation of its students," the bishop said.

He was thankful to the generous people who made the building a reality.

Joseph Phillips, Prairie View A&M teacher and Newman sponsor, gave the opening talk and was master of ceremonies. Gerald Lemond, Newman president at the college, cited the completion and dedication of the new hall as "dream come true."

Chaplains to the bishop were Father Elbert Harris, S. S. J. and Father Joseph Wyss, O. P.

The Baptist Student choir sang the hymns. Music for the reception following the dedication was provided by the Newman Band.

Father Robert Bowen,

## Ministers

CONTINUED from Page 1 (Church of God in Christ); R. T. Cunningham and F. L. Fenney, (CME); Bishops U. L. Sherman, E. E. Coates and L. W. Jenkins, (AME); Bishop Kenneth Copeland (United Methodist); and Father Robert Bowen, (Catholic).



NEW STUDENTS — January freshmen and transfer students are helped in adjusting to campus life by upper class students pictured above. They are - (top) Louise Wartell, Karen Small, Va Verne Holt and Patricia Johnson, (bottom) Patricia Jackson, Linda Hatton, La Verne Holt, Alice Knight, Karen Small, and Edna Y. Jones.

S. S. J., Newman chaplain at Prairie View, said that much of the funds to build the new center came from the Negro and India Mission Fund. The Diocesan Development Fund (DDF) has also pledged \$13,300 in the 1970 drive for the furnishings and staff at the St. Martin de Porres Newman hall. Father Paul Downey, S. S. J., consultant of the Josephite Fathers and president of St. Joseph College, travelled from Baltimore, Maryland to attend the event.

## When you know it's for keeps

All your sharing, all your special memories will be forever symbolized by your diamond engagement ring.

If the name, Keepsake is in the ring and on the tag, you are assured of fine quality and lasting satisfaction. The engagement diamond is flawless, of superb color and precise modern cut.

Your Keepsake Jeweler has a choice selection of many lovely styles. He's listed in the yellow pages under "Jewelers."



REGISTERED Keepsake DIAMOND RINGS



Rings from \$100 to \$10,000. T-M Reg. A. H. Pond Company, Inc., Est. 1892.

HOW TO PLAN YOUR ENGAGEMENT AND WEDDING Please send new 20 page booklet, "Planning Your Engagement and Wedding" and full color folder, both for only 25c. Also, tell me how to obtain the beautiful 44 page Bride's Keepsake Book at half price. 5-70

Name \_\_\_\_\_ Address \_\_\_\_\_ City \_\_\_\_\_ Co. \_\_\_\_\_ State \_\_\_\_\_ Zip \_\_\_\_\_

KEEPSAKE DIAMOND RINGS, BOX 90, SYRACUSE, N.Y. 13201



New things like the Prairie View pennant Patsy is holding and the tape recorder Mrs. Woodard is holding are listed at prices you can't beat at your local College Exchange Store.

Welcome to . . .

## Wyatts Chapel Baptist Church

Prairie View, Texas  
1 Mile Northwest of the College)

FREE TRANSPORTATION TO CHURCH

SUNDAY SCHOOL ..... 10:00 a.m.

MORNING WORSHIP ..... 11:15 a.m.

LORD SUPPER ..... Each 2nd Sunday

REV. E. W. (Ed.) McCULLOUGH, Pastor

REV. J. I. KIRKWOOD, Assistant

Phone 857-3230 — 857-3725 — 857-3533

## ST. MARTIN de PORRES

### CATHOLIC CHURCH

(on the street behind the Freeze King)

SUNDAY MASS — 10:00 A.M.

Taxi to Church outside Evans Hall at 9:30 a.m.

DAILY MASS — 5:00 P.M.

Chaplain: Fr. Robert Bowen, S.S. J.

Office (Campus) - Grounds Building.

Office Hours: Monday thru Friday 9 a.m. - 3 p.m.

Church Phone: 857-3351

## THE EPISCOPAL CHURCH

WELCOMES YOU

ST. FRANCIS' CHURCH AND STUDENT CHAPEL

(Adjacent to Campus)

Vicar: Father James Moore — 857-3590

SUNDAY SERVICE  
9:00 a.m.

SUNDAY SCHOOL  
10:15 a.m.

Monday thru Thursday  
5:30 p.m.





Dr. J. L. Brown

**Black Capitalism  
Is Topic of Meet  
Attended by Prof.**

Dr. J. L. Brown, chairman of the Department of Economics, returned Friday from a special conference concerned with "Black Managers in Industry."

Held on February 1-4 at Fisk University and Vanderbilt University in Nashville, Tennessee, the Conference was attended by representatives of more than 40 colleges and universities. The four-day meeting was sponsored jointly by the Ford Foundation and the Sloane Foundation.

Several persons representing industry were also in attendance.

Many pertinent points were raised as to methods and procedures for encouraging graduates of black institutions, who enter industry to aspire for promotions in the areas of middle managers and becoming entrepreneurs in the ghettos of American cities.

**President Appoints  
Standards Group  
For Secretaries**

In order to upgrade the overall standards of performance of new clerical personnel to be employed at Prairie View A&M College, there has been appointed by the President, a Secretarial Standards Committee. This committee is currently revising the tests to be administered to prospective clerical personnel, in an effort to measure general intelligence, practical judgment, personality traits and values, as well as skills of dictation, transcription and typewriting. Members of this committee are: Dr. Kenneth Briggs, Mrs. Esther Tyler, and Mrs. Savannah Collier.

"Young girl," the librarian said, "just what book do you want?"

"Do you think I could borrow 'Scouting for Boys'?" the girl asked.



**They do exciting things. Like mining oil instead of pumping it. Working on air pollution. Making electricity from the atom. Isn't that the kind of company you'd like to work for?**

We're a petroleum and energy company. But we believe that making our world a better place to live in makes good sense as well as good business. And this kind of thinking demands individuals with

ideas and energy. People who can see the potentials—usual and unusual—which our products have for improving the world. People like you. Bring your ideals, and your motivation, where they'll

make good things happen. See our interviewers on campus. Or send a resume to: Manager Professional Recruitment, 717 Fifth Avenue, New York, N.Y. 10022

**Our interviewer will be here next week. Talk to him.**

ARCO Chemical Division  
Nuclear Materials and Equipment Corporation  
Atlantic Richfield Hanford Company

**the new AtlanticRichfieldCompany** 

# EDITORIALS

## To President Earl Rudder

Our best wishes for an early and complete recovery, our prayers are with you.

## PV's Development Plan

The Development Plan for Prairie View A&M through the Seventies which was presented last month by the Centennial Council is a most important document . . . one which will stand out in the future history of the college.

Students, faculty, staff, alumni and all who contributed to the Council in its 16-month study can rightfully be proud of the document which is being released across the state and nation.

The job ahead is to help achieve the goals set forth in the Council's recommendations.

## The Darrell Royal Episode

It is good to see that Darrell Royal, Coach of the nation's Number One football team has been fully cleared of the statement about black coaches attributed to him in an AP story from Washington recently.

The statement had Royal attending a meeting of black coaches while actually he was at the U of Texas Football Banquet.

The incident does give us an opportunity to say that it is high time black youngsters had their chance at athletics (and all other student activities) at the state's largest university. While the state of Texas is blessed with plenty other fine colleges and universities that are meeting every responsibility to minority citizens, it is nonetheless unfortunate if the main university at Austin is trying to prove something otherwise.

## Happenings In The City

The new city government is having its problems, including the most serious one of causing a great deal of unrest and dissention in what was perhaps the most unaffected, peaceful little community in the state.

The root of the problem here is that there was never any mandate from the people to organize a community government in the first place. When it was brought up most everyone agreed that it wouldn't be a bad idea . . . although many of the standard needs for immediate organization were not present. In fact, many who are able are fleeing the cities . . . for reasons which make the headlines daily.

Perhaps the most biting issue is the tax rate which most seem to feel is to high for a beginning, particularly when there are no real benefits suggested for the foreseeable future. There could be some relation to the high city population figures which are posted on the main highway. A visitor related recently that he drove miles around the area looking for the "downtown district".

The 4000 student inhabitants could probably care less, but for the premanent tax paying citizens, the "illusions of grandeur" and the "rush for greatness" are becoming hard facts of life at Prairie View which must be dealt with, and soon.

## THE PRAIRIE VIEW PANTHER

Published Semi-Monthly in the Interest of a Greater Prairie View A. and M. College. The PANTHER serves as the voice of the Students of Pantherland.

Prairie View A&M College is open to all, regardless of race, color, religion, or national origin.

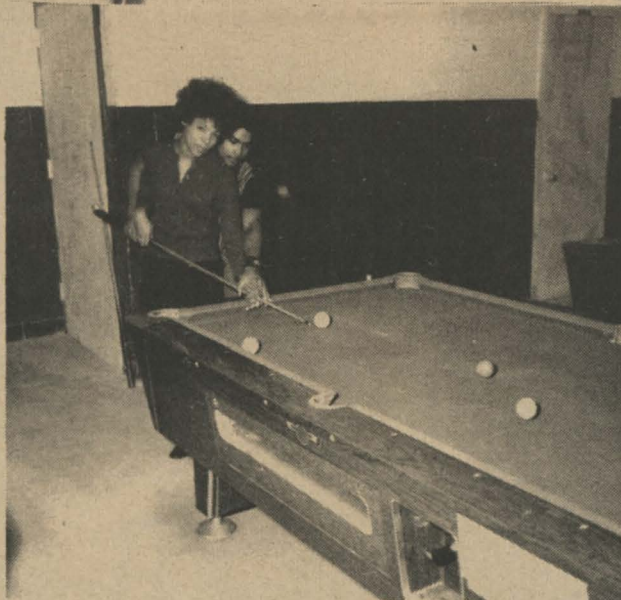
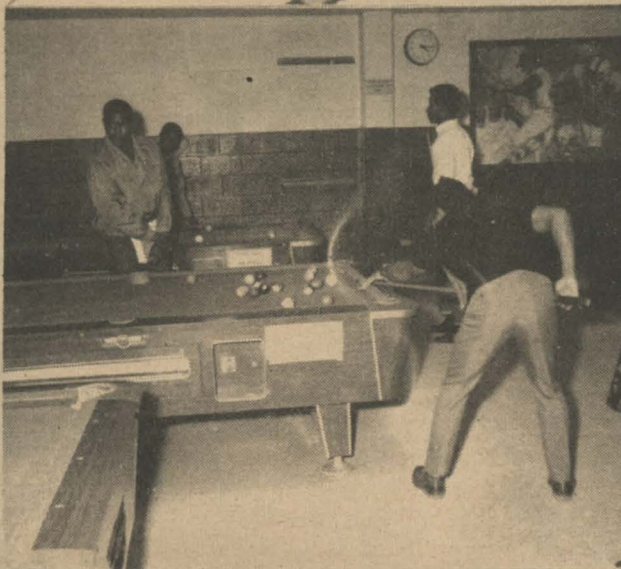
- EDITOR-IN-CHIEF ..... Jay D. Anderson
- ASSOCIATE EDITOR ..... Ira O. Murchison
- REPORTERS ..... Adrian Cooper, Marilyn Herbert, Alfred Johnson, Leo Smith, and Ella Lewis
- FEATURE EDITOR ..... Robert Calhoun and Mary Green
- FASHION EDITOR ..... Jackie Willis
- TYPISTS ..... Clara Mae Bell, Naomi Mosby, Lynda Garrett, Beatrice Houston
- CIRCULATION MANAGER ..... Reba Wells
- PHOTOGRAPHERS ..... Tom Godwin, Alton Edwards, Theodore Johnson
- SPORTS ADVISOR ..... Mrs. Joe Booker
- SECRETARY ..... Mrs. Sarah Woodard
- FACULTY ADVISOR ..... Dr. C. A. Wood

Any news items, advertising, or matters of interest to THE PANTHER may be presented to the Department of Student Publications, Room B-6 Administration, Extension 276-277.

NATIONAL ADVERTISING REPRESENTATIVE —  
National Educational Advertising Service  
360 Lexington Avenue  
New York, N. Y. 10017

Sealy News Print

## From The Center



## From The Center

by Lafayette Collins  
"FROM THE CENTER" this week features the gameroom of the Memorial Student Center. The gameroom is supervised by Mr. Elton Coleman. It hosts activities ranging from a delightful game of cards to a strenuous game of pool. To be a little more specific, the gameroom also features dominoes, cards, ping-pong, a range of game machines and numerous pool tables.

Mr. Coleman states that many more activities are planned such as tournaments in the various games already mentioned. Although the gameroom offers many enjoyable hours for many Panthers, it gives many headaches to the supervisor. Much of the equipment is taken from the gameroom which limits the activity and services.

In the meantime, when your hours are unfilled, visit the downstairs area of the Memorial Student Center and there you will find fun and excitement.



**BLUE BELL  
CREAMERIES**

## Woe Is Jimmy Smith

In spite of a generally unresponsive crowd, amps that didn't work, and a light man who was apparently drunk (he kept turning the lights off-stage and all); jazz man Jimmy Smith and company did their thing to the tune of excellence, last Monday night, February 2.

The renowned jazz organist was in due for a long line of frustrations beginning with a transportation mix-up which caused him to be an hour late for his own show. To add to this, the audience didn't seem to appreciate the exotic jazz style of the organ virtuoso (which doesn't say much for us. It seems like if it's not straight soul, we can't dig it. That makes us look narrow-minded.) The audience changed from totally unresponsive in the beginning to apathetic, to somewhat appreciative, and then to less appreciative in the end. At the end of the performance, some immature clown badgered him verbally to the point of distraction. His frustra-

tions boiling over, Smith simply got up and "put the boy in his place" with a few choice words.

But the talented musician, who was due back in Newark, N. J. at 8:15 the next morning, came through beautifully, performance-wise. At one point the light man flipped off all the lights and left the trio in total darkness - in the middle of a number! This happened repeatedly. Yet Smith and company played right on as if nothing had happened!

During an autograph session after the show, he was visibly up set by the troubles given him by P. V., (Aren't we all). "Everything was bad." But he continued to say that, "I hope there'll be a next time so I can bring my own organ and things down and really put on a show." If there is a next time, this reporter hopes that we will have expanded our minds wide enough by that time to relate to Jimmy Smith's thing because that's where it's at.

Robert Calhoun

## We Talk To . . . . .

by Geneva Chapman  
...Shirley Chopp. Shirley Chopp, Junior electrical engineering major from Calvert, was interviewed this week as the first of a series of outstanding students to be interviewed for a column to appear in the PANTHER. Among her many activities and duties, Miss Chopp includes pledging Zeta Phi Beta, working as Junior Fellow in Black-shear Hall, and serving as treasurer on the Women's Council. When interviewed, the keen intellect which is a characteristic of Miss Chopp was revealed in her open-minded and frank answers to questions that were pointedly unrelated in subject matter and haphazard in sequence. Below is a resume of the interview.

CHAPMAN: Is it selfish to "do your own thing"?

CHOPP: No.

CHAPMAN: In terms of what the word selfish means, why not?

CHOPP: Well, I know you're not supposed to define a word with a word, but selfish means "self" or for yourself. "Doing your thing" could involve others. Maybe someone with the same interest you have.

CHAPMAN: Who would you most like to see President?

CHOPP: Edward Kennedy.

CHAPMAN: Any particular reason?

CHOPP: Mainly because he's a liberal. Both his brothers were liberals and had very good ideas, and he probably shares their ideas.

CHAPMAN: What's your reaction to people who are surprised to learn that you are an engineer

major.

CHOPP: I'm amused.

CHAPMAN: Why?

CHOPP: Engineering is just like any other profession. Like nursing or biology. It just happened to be what I wanted to be. And today women have invaded this field just as they have so many others. Actually, about 1% of the engineers in the United States are women.

CHAPMAN: How do you feel when your work as a potential engineer is qualified by the fact that you're a woman.

CHOPP: That's never happened to me. However, last semester I made a minor error in working a problem and I got a flat "o". For just one little mistake. The teachers figure I'm not used to dealing with machinery, so sometimes when we are using machines in class they might take a little more time with me - explaining how to use the machines. But that's about all.

CHAPMAN: Do you see any reason why there are so few women engineers?

CHOPP: Many of them think it's too technical.

CHAPMAN: Whenever someone asks me why I didn't get into engineering, I always use the excuse that there's too much math in it. Is that true?

CHOPP: Yes, most of it is math.

CHAPMAN: Do you agree with James Earl Jones' statement that "the idea of "black is beautiful" is important only to the young"?

CHOPP: It could be so. Many think that it's just a passing fad, with the Afro hairstyles, dark glasses, etc. Mature people don't  
See WE TALKED, Page 5

### Scenes From Minister's Conf.



### PV Grad Files For Legislative

Claiborne "Clay" Smothers, news director for radio station KNOK, in Dallas, has filed to run for the State Legislature on the Republican party ticket.

A native of Malakoff in East Texas, Smothers, 34, is a graduate of Prairie View A&M College.

He said he hopes to "bring balance and sensitivity to an already great state."

"Texas in the '70s will see new thrusts in education, both vocational and technical, with a more advanced curriculum, and also face the problems of a growing state and financial needs," he said.

He and his wife, the former Barbara Dixon of Dallas, live with their children at 1446 Fernwood.



**OUTSTANDING TEACHER—Professor Joseph R. Phillips** of the School of Engineering received the Colleges' EXCELLENCE IN TEACHING award which was presented at a recent Convocation by President A. I. Thomas.

The award, in the amount of \$1,000, was made possible by General Dynamics Corporation.

### Ford Company To Interview

Mr. A. E. Fredrichson, Field Service operations Specialist, Ford Division, will be looking forward to interviewing students or alumni with a background and interest in Automotive Technology for Ford's Automotive service sales training program. His interviewing schedule will be from 9:00 a.m. to 4:00 p.m., at thirty minute intervals, in the placement office, on February 17.

Mr. A. E. Fredrichson is seeking highly qualified young men who have a keen interest in automobiles, ability to learn all aspects of dealership service operations, personal qualifications characteristic of sales contact personnel, and the potential to advance to top manage-

ment positions in the sales and service organization.



A gentle tongue is a tree of life.—(Prov. 15:4).

How many times have we wished that we could recall words said in anger or frustration? Thoughtless words and comments foster anything but the peace and harmony desired. Let us be tolerant of one another and let pleasant talk grace our homes. The Lord, in His love, can help us guard our tongue, and He can and will endow us with grace if we but let Him.

### General Elec. We Talked

CONTINUED from Page 1 programs.

Major interchanges have included: Tuskegee Institute with University of Michigan, Dartmouth College, and Georgia Institute of Technology; Southern University with University of Illinois and Tulane University; North Carolina A and T State University with Virginia Polytechnic Institute, University of Wisconsin and Duke University; Tennessee State University with Vanderbilt University, University of Tennessee and University of Michigan; and Prairie View A and M College with Iowa State University and Texas A and M University.

"One of the greatest needs of the predominantly Negro college," according to Dr. Watson, "is for funds to attract faculty, upgrade existing faculty, and retain faculty in light of the recruiting efforts of better financed institutions."

"There is also a need for student aid funds. The

CONTINUED from Page 4 participate in fads, and since they do have the concept that this is nothing more than a fad, they are just waiting for it to pass away.

CHAPMAN: Of what significance is the black cultural movement in America from your point of view?

CHOPP: I'm sure that it will bring about a change. The riots and protests for black rights have brought about this cultural shift toward "blackness". The people who are maneuvering it are seeking an identity, and as long as they are searching for their identity, this will be going on.

CHAPMAN: What about Afro-American art, music, and literature?

CHOPP: I feel that it will definitely take its place in American culture.

ASEE program is an organized effort to alleviate these needs, and additional funds could have a significant multiplier effect."

### Why engineering students graduate to Lockheed.

Progress is a matter of degrees. But, that's only the beginning. At Lockheed Missiles and Space Company, we're working on wideworld...otherworld...upperworld...and subworld projects. □ We're pretty high on space...we've got Agena and other extremely advanced programs to prove it. And, when it comes to ballistic missiles, Polaris and Poseidon show an arc of triumph. We think deeply, too...consider our deep submergence vehicles, for example. And, just to show you our feet are solidly on the ground, we're working on advanced land vehicles. Information? Business, government and industry get it out of our systems.

LMSC has been in the sea...on land...in the air...in space...and now, we're coming to your campus. We'd like to talk to you about coming to LMSC. Contact your placement office for an appointment. Our interview team will be on campus March 2.

Move up to Lockheed...or move over for those who do. □ If an interview is inconvenient at this time, write to: College Relations Coordinator, P.O. Box 504, Sunnyvale, California 94088. LMSC is an equal opportunity employer.

**LOCKHEED**  
MISSILES & SPACE COMPANY  
A GROUP DIVISION OF LOCKHEED AIRCRAFT CORPORATION

Deep Submergence Rescue Vehicle

Twister (Advanced land vehicles)

Poseidon

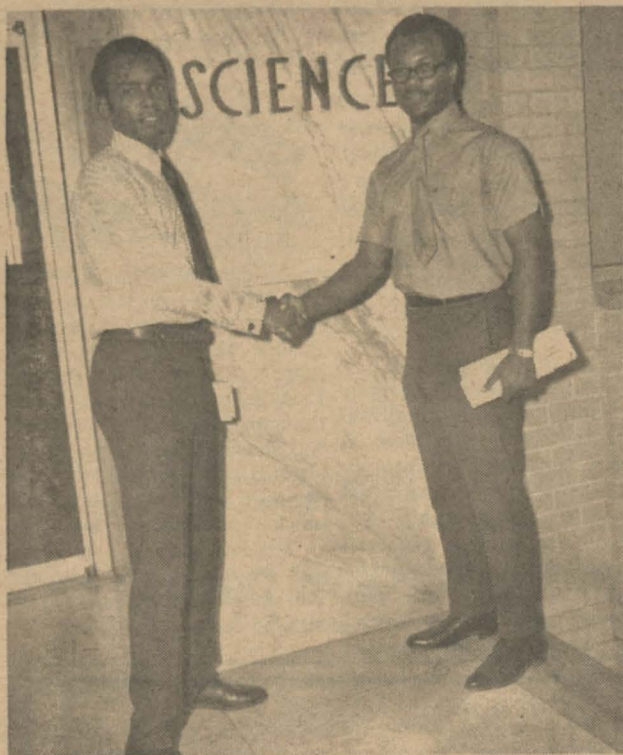
Agena (And other advanced space programs)

Information Systems

### S&N SUPER MARKET

WALLER  
MEATS — GROCERIES  
APPLIANCES — Sales and Service

## Pre-Medical Students Accepted in Medical Schools



Mr. Ira Bell, III and Mr. James Bryant, Jr. have been tentatively admitted to the University of Texas Medical School at San Antonio, Texas and Meharry Medical School, Nashville, Tennessee pending the completion of several required courses.

Messrs. Bell and Bryant have been very active in the Paramedical Vocational Club in the Biology Department, and we feel that this activity has been beneficial in getting these young men in Medical School.

Both the PreMedical Advisory Committee and the staff join me in expressing our congratulations and very best wishes

to these students in their new endeavors.

### He Also Ran?

Friend wife was up to her old tricks of going through her husband's pockets.

"And, who is Susie?" she demanded, waving a slip of paper before her husband's eyes.

The husband did some fast thinking. "Why, that's the name of a horse my boss gave me a tip on yesterday," he said with an air of injured innocence.

"Oh yeah?" she screamed. "Well, your horse called up and asked for you this afternoon!"

## From The Placement Office Answering Company Correspondence

After a student has completed an interview he or she looks forward to receiving a letter from the Company saying what the outcome of the interview was. The letters are of several kinds. Briefly, I would like to mention them and say something about the response or obligation of the student.

First there is the letter the company sends advising that after careful consideration of your qualifications, there are no available openings. It is not necessary to answer this letter but you should start immediately considering other available opportunities. If at some point the company decides it is further interested in you after the initial interview, it will ask you to interview on its return trip to campus or invite you in for a plant visit. Usually when invited to the company plant you are given several possible dates. You should select the date which best fits your schedule and reply as soon as possible if you decide to accept. In case you cannot make the trip you should write the company declining the invitation. At no time should you linger to the point that the company has to continuously call asking you to respond. Another important aspect is the financial responsibility involved in making the trip. It should be decided upon acceptance of the visit whether you will

pay in advance and accept a refund or arrange for the company to send money for the trip. Whatever you decide to do you should give a prompt reply.

Probably the most important letter you will receive from the company is the job offer. This letter is a difficult one to answer since you are involved in making a decision as to salary, location, and job type. It is not possible to reach an immediate decision since you may have several letters but you should acknowledge receipt of the offers and let the companies know that you need additional time to reach a decision keeping in mind that others are many times being considered.

Once you have accepted an offer do not accept a second offer and decline the first one, since you are obligated to keep your word.

Persons who are being considered for summer employment are expected to follow the same procedure as those who are graduating.

If a problem arises or situation develops which you are unable to handle, you should come to the Career Planning and Placement Center for assistance.

Herman L. Jones,  
Director  
CAREER PLANNING AND PLACEMENT CENTER

## Dr. A. T. Kynard Speaks at In-Service Education Conferences

Dr. A. T. Kynard, Teacher Trainer and Director of the Division of Technical Education was keynote speaker at an in-service education conference for vocational industrial education teachers January 30-31. The conference was held at the Senior High School in the Rio Grande Valley City of McAllen in south Texas.

The theme of the two-day conference centered around quality training programs and self evaluation of occupational teachers. Dr. Kynard's address was delivered at the Opening General Session and it emphasized several areas of urgent concern for industrial teachers in maintaining quality programs of instruction.

Other speakers and consultants for the conference included Dr. R. D. Cathey, Superintendent of McAllen public schools; James Tolson, Area Supervisor; Bill Ditto, Del Mar Technical Institute; Robert S. Patterson, Texas Education Agency; and Robert Wagner, Texas A. and M. University.

McAllen is a city with a population of more than 40,000 and is located seven miles north of the Rio Grande River. South of the Rio Grande from McAllen is the city of Reynosa, Mexico with a population of approximately 150,000.

Dr. Kynard will also



Dr. A. T. Kynard

serve as keynote speaker for a similar conference in Plainview, Texas, February 20-21. All conference sessions and workshop activities will be held at the Holiday Inn in Plainview.

## Eminent Scientist Will Lecture Here

Dr. Glen T. Seaborg, Chairman on The Atomic Energy Commission will lecture at Prairie View on February 23rd, 1970.

Dr. Seaborg was awarded the Nobel Prize in Chemistry in 1951.

Small boy handing his mother the telephone: "It's Mrs. Jones with the 9:30 news."

## Dormitory News

### Blackshear Hall

Blackshear is happy to have three new residents this semester. Two of whom were with us last school term. We are proud to announce that we have a Zeta in our midst. Who was once known as Rabbit No. 1 is now Soro Shirley Chopp. Congratulations Shirley.

Miss Nannie Thomas and Mr. Fred D. Grant of Beaumont, Texas will be married March 28, 1970. The wedding will be in Mt. Zion CME Methodist Church, Center, Texas.

The engagement of

### Minor Hall

The young ladies of Minor Hall who live in the Live Oak, Loural Mognolic and the Mocker Nut communities have new neighbors.

They have been welcomed to the communities by the Minor Hall family.

### Evans Hall

The Evans Hall community is happy to welcome eighteen new residents.

We would like to take this opportunity to invite all of the new as well as old residents of this

Miss Georgia Mae Zeigler to Mr. Edward Beasley of Orange, Texas has been announced. The date of the wedding has not been set.

Clara Byrd and Faye Brown are in with the Flu, we hope them a speedy recovery.

We sympathize with Joyce Hoyt in the loss of her uncle.

Nancy Stanes and Rosemary Mattox and Linda Lee and Earnestine Dews were the Grand Prize Winners in the recent Spades Tournaments.

We are praying that they will have a happy and successful semester. We lost a few of our students and we wish them much success in obtaining jobs.

News obtained by Student Reporter of Minor Hall.

friendly community to join in the community's activities. There is always something constructive to do and enjoy in Evans Community.

The reporter

## What Is Love?

What is love that I need it so?  
What is pain that I heed it so?

Is love your soft and gentle touch?  
Is it a feeling that I need so much?

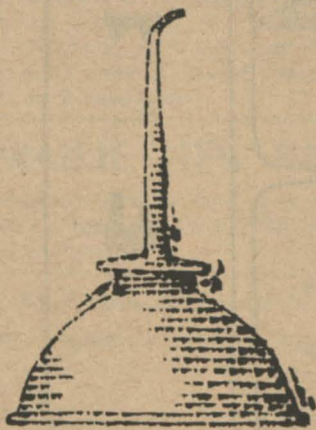
Is pain the fear of losing you?  
Is it fear that I'm subject to?

Is love the look that's in your eyes?  
Is it a look that I so prize?

Is pain the taste of love's defeat?  
Is it a taste that keeps me meek?

What is love, what is pain?  
Love is pain and pain again.

## oil can:



- clothe you (with synthetics)
- wash your clothes (with detergents)
- brush your teeth (with nylon)
- paint your room (with resins)
- carpet your home (with polystyrene)
- wrap your lunch (with waxpaper)
- by using petrochemicals made from petroleum hydrocarbons.

There's more to oil than oil. More to an oil company than you realize. Find out how much more. And how you can contribute to an expanding society through a growth company like ours. In research, manufacturing, or administration and sales. We'll be on campus: FEBRUARY 17, 1970

An equal opportunity employer



## 24-HOUR SELF SERVICE at HEMPSTEAD WASHATERIA

Top Loading Speed Queen and Philco-Bendix Machines

Bank and Post Office Block — Hempstead, Texas

VA 6-8159

Your Patronage Appreciated

## WARD'S PHARMACY

"YOUR REXALL STORE"

Waller County's Most Progressive and Most Modern Drug Store

Telephone VA 6-2445 Hempstead, Texas

# Awaken, Black Brothers!

by Danny Ray Moffitt

I wish to express a point of view not often encountered in this day of the hot-blooded militant and the docile Uncle Tom, both known to all of us.

I maintain that the reason for killing Dr. Martin Luther King, Malcom X, John F. Kennedy, and Robert F. Kennedy were (1) to kill the idea of brotherhood, dignity and love which had begun to entrench themselves in the hearts of both blacks and whites, (2) to eliminate advocates of peaceful co-existence between black men and white men from American society, (3) and to fan the flames of hatred anew among the economically deprived and indigent of both races to the point where they will take up arms and kill each other. The poor people of the country will have eliminated themselves so that the master plan of an all white America can be irreversibly achieved.

I maintain that there is a conspiracy to systematically eradicate the black man from American society as was done to the Indians.

What is the nature of the black man? How do the Negroes relate themselves to one another? How do we relate ourselves to the community? Our relationship with one another as black men is utterly deplorable. Black Brothers! The Negro wants to be everything else but himself. He wants to be a white man. He processes his hair. Acts like the white man. He wants to integrate with the white man which is good, but when he isn't about to integrate with himself or with his own kind, he is a naive individual living in a world of reality totally lost. The Negro wants to lose his identity because he does not know his identity. He lives in the black belt because the white man says he cannot move. He takes little interest in his community. As far as it is possible, the Negro does not wish to be identified with other Negroes. How can he integrate with the white man when he has not learned to integrate with himself or with other Negroes? Why Black Brothers, can't we black people take pride in improving the black belt? Why can't we put our money with other blacks, for improvement of the black belt? Why can't our businesses be in the black belt? No, the Negro is satisfied with being a front man for the whites and Jews in stores in the black belt. The Negro distrusts his brothers and has no love or concern for him, as he says he does. We will shudder if anyone tells them that businesses can be improved and that business can be established in the black belt by the Negroes. Compare the com-

placency of the Negroes in America with the rapid tempo with which events are taking place in Africa. The recent Accra conference is an example of how black people in Asia and Africa are trying to part company with the white man. In America the Negro wants to integrate. I believe that the efforts

and money spent in the cause of integration were put in uniting the Negroes for their own ends, the solution of the Negro problem would be closer in sight than any other solution now offered by the integrationists Negroes must go for themselves and be free to make their  
See AWAKEN, Page 8

## Movie Schedule

- February 13  
How To Commit Marriage
- February 15  
Charly
- February 22  
The Killing of Sister George
- February 27  
Take The Money and Run

## Former Biology Major To Pursue Ph. D

Miss Janice Criner, a recent honor Biology student, expects to complete all requirements for the M. S. Degree in August at Wayne State University. Miss Criner is on an Assistantship which requires that she teach two laboratory and two discussion

classes in general biology - a total of 100 students. This young lady has been accepted in the Department of Physiology, John Hopkins University, School of Medicine, Baltimore, Maryland beginning in September 1970 to pursue the Ph. D. Degree in Physiology.



Can you imagine what the Picturephone® will do to blind dates?



Just one of the many things Southwestern Bell is contributing to making your life more complicated.





# Psych-Out

by Geneva Chapman  
A major subject of importance on any college campus, be it Rice or H. T., P. V. or U. T., North Texas State or Texas A&M, is LOVE. This is one subject studied by Freshman, Sophomores, Juniors, and Seniors alike; and though it's not listed in the course catalog, it is probably the most popular course studied.

With St. Valentine's Day coming up soon, love is even more of an issue. Girls are conniving and scheming up ways to get that status symbol "box of candy", and guys are "a duckin' and a doggin'" for a change, trying to save their cash. But even though most of the gals who shower their guys with lavish attention just prior to St. V. Day have an ulterior motive, there are still some (a precious few) who really care for their loves. One of these devoted angels probably wouldn't mind if her man gave her a thirty-five cent card instead of a \$12.98 box of candy. Here are a few tips for you guys so you'll know which of your girls are true and which are just plain shrewd:  
**A TRUE LOVE WILL**

1. Help you study...
2. Eat every meal with you...
3. Let you teach her how to drive...
4. Let you use her meal

- card...
  5. File your fingernails...
  6. Lend you a dollar to take her to the movies...
  7. Listen to you read aloud...
  8. Be genuinely angry when you forget her on St. V. Day...
  9. Help you save your money...
  10. Smile calmly when you give a friend a more than friendly kiss...
  11. Figure out your moods...
  12. Tell you she loves you...
  13. Go to a football game with you in the rain...
  14. Wear a perfume you like...
  15. Not mind when you decide to pledge "Alpha"
- A SHREWD LOVE WILL**
- ...make sure you study subjects you both take.
  - ...not let an ounce of it show.
  - ...check with a driver's ed. teacher just to be sure.
  - ...borrow a friend's for herself.
  - ...then get you to file hers.
  - ...borrow it from your best friend.
  - ...make you read something she wants to hear-like love poems.
  - ...remind you on the 13th.
  - ...help you spend it on her.
  - ...do the same thing to the first guy who passes

## Scenes from Newman Dedication



# Kollar Korner

Galations 2:20 "...and the life which I now live in the flesh I live by the faith of the Son of God, who loved me, and gave himself for me."

Faith is not merely an intellectual acceptance of the fact of redemption, but also a moral submission to them. The gospel is something that must be obeyed from the heart. And this is the great stumbling block: for we are not willing to submit to the facts of our salvation.

It is sometimes said of the gospel, "It is a matter of simple faith," and rightly understood, this is true. It is open to question, however, whether the terrific challenge inherent in "simple faith" is always realized. "All you have to do is believe" is sometimes said to inquirers, but believing" involves repentance, that is to say, dying to the old life, and obedience and surrender of the will to Christ. This is what it cost to "believe", and the cost of "simple faith" must likewise be read into any true understanding of what Paul means by "reckoning". Romans 6:11 "Likewise reckon ye also yourselves to be dead indeed unto sin, but alive unto God through Jesus Christ, our Lord.

The united ministries of

Prairie View welcome all students to come by and talk with them.

Rev. Leland W. Jenkins, Sr.  
AME Chaplain  
United Ministries

## Awaken

CONTINUED from Page 7  
own mistakes.

Awaken Black Brothers! Don't allow your passions to overthrow your reason. Don't allow the shallow achievement of a few over-taken, tokenly integrated university buildings to cheat you out of your future. Look to the future. Plan for the future by concentrating on learning the basic weaknesses of your adversary, his constant need for food for his own psyche, his need to constantly reassure himself that he is great. Make his knowledge your principle weapon against him.

Don't lose the game by default Black Brothers. Employ reason and emulate the greatest thinkers of all times and work for your goals within the framework of the institutions of the society with which you have taken such violent issues. We haven't the economic resources to rebuild after the destruction. So don't destroy, build.

## PV Outlasts Dilliard, 82-81

BY KERMIT DANIELS,  
SPORTS EDITOR

Prairie View outlasted Dilliard University of New Orleans, La. here Thursday night by the score of 82 to 81. Prairie View started the game with Carl Settles hitting the first two points, from then on it was all Panthers in the first half. With 16:28 remaining in the first half it was P. V. 12-D. U. 3. Settles hit all five of his first attempts. With 13:16 remaining, Dilliard closed the gap to 8 points with P. V. leading 16 to 8. With Walter McCowan and James Miledge pulling down valuable rebounds the Panthers were able to keep a 7 point lead and lead halftime 41 to 34. P. V. had to rely on outside shooting in the first half as they were unable to penetrate the middle of D. U.'s tall defense. They sported a 6'9" center, two 6'6" forwards and a 6'5" guard.

P. V.'s shooting in the first half produced 55 per cent on free throws and 55

See OUTLASTS, Page 9

- by.
- ...let you wonder a little about hers.
- ...show you how much.
- ...take along an umbrella.
- ...slyly mention its name two days before her birthday.
- ...suddenly decide to pledge one of the campus clubs.

# IBM will be interviewing on campus March 6

We'd like to talk to you if you're interested in a career in programming or marketing. Sign up at your placement office.

An Equal Opportunity Employer

# IBM



WOULD YOU RECOGNIZE A BECHTEL ENGINEER IF YOU SAW ONE?

Probably not.

They don't really look that different from any other engineers. Maybe one even lives in your hometown.

It's what Bechtel Engineers DO that sets them apart. Working for the company that is internationally known as a pioneer... the one that tackles the tough, the interesting, the "can-it-be-done?" jobs... The Bechtel Engineer is the one who is there.

Bechtel Engineers provide complete professional services, from economic feasibility studies and conceptual estimates to design, construction and pre-operational plant testing and start-up.

Bechtel has offices in New York City, Washington, D. C., Los Angeles, and Houston with world headquarters in SAN FRANCISCO.

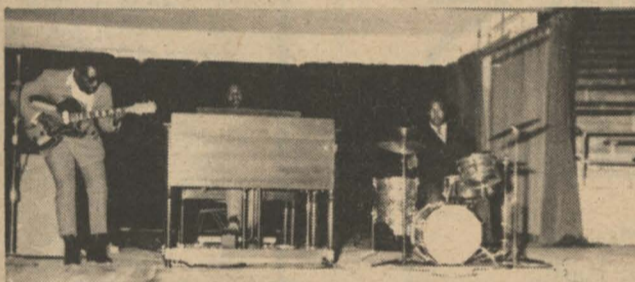
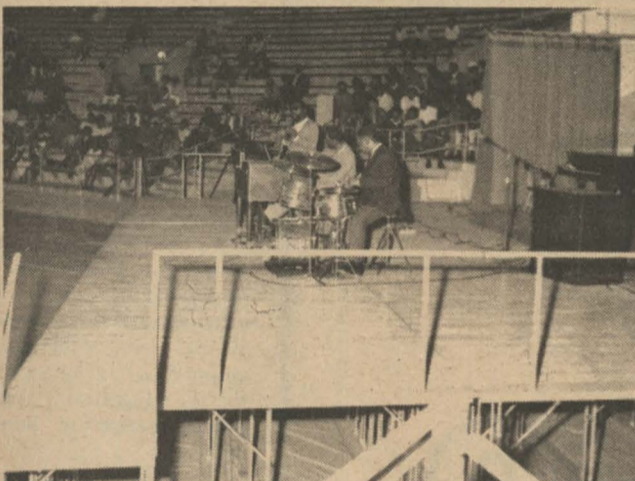
### Are You A Bechtel Engineer?

Find out. Find out about a career in Project Design, Estimating, or Construction for MECHANICAL, ELECTRICAL, CIVIL, CHEMICAL or NUCLEAR engineers.

Find out by contacting your college placement office or write to:

College Relations Supervisor, Department 20  
Bechtel Fifty Beale Street, San Francisco, CA 94119  
Bechtel is an equal opportunity employer m/f.

Action During Recent Jimmy Smith Concert



Jimmy Smith (above) meets Prairie View Student Leaders after performing recent concert on campus. Pictured are: SGA President, Marvin Bell; Vice-President Armond Hathaway, Jimmy Smith, Director of Finance; David Brewer, Junior Fellow, Richard Blair, and Director of Organization, Joseph C. Carter.

**Outlasts**

CONTINUED from Page 8  
per cent on field goals, while D. U. shot 42 per cent on free throws and 36 per cent from the field.

The second half was a different story. It was nip and tuck all the way. Dillard University went ahead 51 to 50 with 13:30 left in the second half and led 8 points 63 to 55 with

9 minutes remaining.

Then Donald Dyer who sat out most of the first half, came into tie the score time after time with key free throws and field goals. He hit 8 in a row from the foul line.

The Panthers managed to hang on and win the squeaker 82 to 81. Carl Settles who fouled out in the second half lead all PV scorers with 20 points.

**Panthers Place Second In NAIA Nationals**

Coach Hoover John Wright, the master mind of track and field took his team to the N. A. I. A. track meet held at Kansas City, Missouri, two weeks ago.

The Panthers, who were two-time N. A. I. A.

champs, ran into the strong and inexperienced Eastern Michigan squad and placed second.

Although the Panthers didn't win all the marbles, their presence was felt. The Panthers ran with out the service of All-Ameri-

can Thurman Boggess. Boggess' mother passed the night before the meet and he didn't participate.

One thing the fleet Panthers did prove, was that they are still kingpins among SWAC schools.

**PRESCRIPTION DRUGS**  
Where you get more than  
Just a welcome and good  
service.

**CITY DRUG**  
826-2496 Hempstead  
W. W. Wilkes, Owner

**If you don't like the way people talk to each other,  
we'll pay you to change it.**

We're in the communications business.

And during the next 30 years we're going to upgrade all the equipment we now have in order to provide even better service to our 6 million existing customers.

As if that weren't enough we're also going to have to come up with enough new equipment to provide telephone service to about 26 million more people. As well as equipment for a much more extensive data communications program.

We need enough people (electrical, civil, mechanical and industrial engineers, designers, accountants and economists) to plan, design, build and operate a company that will be four times bigger than we are today. We also need engineers, researchers and scientists to develop electronic switching equipment, laser and other communications systems we'll be using 10, 25 and 50 years from now.

But this is only one part of our communications business.

Our Sylvania people, for example, are involved in other types of communications. Like color television sets, satellite tracking stations and educational television systems.

Automatic Electric, Lenkurt, Ultronic Systems and some of our other companies, subsidiaries and divisions are working on advanced types of integrated circuitry, electro-opticals and communications systems between people and computers and between computers and computers.

So if you think you have something to say about the way people talk to each other . . . we're ready to listen.

**General Telephone & Electronics**

Equal Opportunity Employer

*B. Schwarz & Son*

"96 Years of Continuous Service"

COMPLETE DEPARTMENT STORE

and

FURNITURE STORE

*It's a pleasure doing business with you.*

# Prospective Teachers' Group Organizes Career Conference Ahead

Recently Mrs. Dolores Green, Supervisor of Elementary Education in the Houston Independent School District and Past President of Texas Association for Childhood Education, met with students here at Prairie View. At this meeting prospective teachers' professional groups were organized. Mr. Anthony Little led the group singing. The opening prayer was given by Miss Mary Phillips. Mr. Carl Settles sang "No Man Is An Island" and other solos. Mr. William Lucas introduced the speaker,

Mrs. Dolores Green, who discussed the purposes and structure of the organization and closing remarks were made by Mrs. Outley and Dr. Grossman, who assisted the sponsor, Mrs. K. Snell Gibson.

A. C. E. I., T. A. Y. E. C., and E. K. N. E. presidents elected were Mr. Settles, Mr. Lucas, and Miss Vaults, First Vice President are Mr. Little and Miss Thomas. Other Vice-presidents are Mr. R. W. Robinson, Miss Mathews, Miss Phillips, and Miss Washington. Publicity officers are Mr. Willie Glenn

Boothe and Miss Spears. Secretaries are Miss Reed, Miss Penson, and Miss Birdow. The treasurers are Miss Watkins and Miss Wyche.

The next meeting will be Tuesday, February 10, at 6 p.m. in the Teacher Corp Building. Those interested in the teaching profession are cordially welcomed to attend!

The small boy faced his sister's boy friend and challenged: "Why do you come to see my sister all the time? Don't you have one of your own?"

The Student Life Division continues its three-phase program of Career Conferences for the Prairie View students during the Spring semester. The total series of conferences, introduced throughout the 1960-70 academic year have been planned as opportunities for each student classification to actively participate in and ascertain first-hand information concerning (1) orientation to vocational opportunities; (2) decisions of a major program of study; (3) career planning; and (4) job placement at each

level of training during the college career.

Involved in student-career planning interaction will be departmental advisers, the campus Counseling Center and Placement Center staff, alumni actively engaged in promising careers and representatives of local and regional industrial, business and other employment agencies.

SERIES I: designed for entering Freshmen was executed during the Freshman Orientation period in acquainting the new student with vocational op-

portunities prior to selecting a major.

SERIES II: **CAREER CONFERENCE: DECLARATION OF MAJORS DAY** February 19 (for all sophomore students) to include the gathering of information necessary for assisting the student through the Placement Office as he clarifies his vocational plans in relation to his chosen major.

The all-day Conference will include planned group sessions with departmental advisers to review current materials, social settings and a general assembly. (See announcements)

SERIES III: **CAREER CONFERENCE: VOCATIONAL PLANNING AND JOB PLACEMENT** April 2 (for all Juniors and Seniors) to include an assessment of Placement Center data on each student as he acquires additional information in techniques of interviews, preparation of resumes and desirable characteristics of employees as this relates to his educational training and prospective employment.

The all-day Conference will include planned seminars among majors and sharing of the expectations of representatives of business, industry and other agencies, as well as alumni. There will be opportunities for a review of materials related to current employment practices. (See Announcements)

Specific wishes of students in fulfilling career planning needs prior to either Conference may be forwarded to the Student Life Division. Members of the Career Conference Planning Committee are: T. R. Solomon, Dean of Student Life, Chairman; G. H. Stafford and V. H. Askew of the Counseling Center, Herman Jones and Lois Parsons of the Placement Center, Raymond Carreathers and Johnny Johnson of the Fellow System, and designated deans and departmental advisors of respective schools.

## Alcorn Nips PV, 104-100

Alcorn held off Prairie View A & M in the final three minutes to salvage a 104-100 Southwestern Athletic Conference basketball win.

A field goal by James Flemings gained a 100-100 tie for the Braves and Samuel Sing's drive sent Alcorn ahead to stay. Sing scored 27, high for the game, as Alcorn hiked its league record to 5-2 and its season mark to 12-6.

PRAIRIE VIEW				ALCORN			
	Fg	Ft	Tp	Fg	Ft	Tp	
Guin	4	2-2	10	Sing	11	5-7	27
Dyer	2	0-1	4	Watkins	6	5-7	17
Allied	2	1-2	5	Wright	10	1-2	21
McCowan	7	5-5	19	Mason	7	3-4	17
Gamble	8	2-2	18	Flemings	3	4-6	10
Ricks	7	2-3	16	Tooks	2	1-2	5
Settles	8	5-7	21	Stewart	2	1-2	5
Bradshaw	2	4-5	8				
<b>Totals</b>	<b>40</b>	<b>20-27</b>	<b>100</b>	<b>Totals</b>	<b>42</b>	<b>20-30</b>	<b>104</b>
Halftime Score: Alcorn 59, Prairie View 58.				Team Fouls: Prairie View 30, Alcorn 22.			
Poked Out: Guin.							

# campus interviews

Individuals majoring in Computer Science, Engineering (Electrical, Mechanical or Industrial), Mathematics, and Physics will be interviewed by Collins Radio Company.

**February 25, 1970**

### Some facts about Collins:

1. Collins pioneered many of today's data techniques and recently announced a computer-controlled design and manufacturing service for customers.
2. The company ranks as the largest independent producer of microwave systems.
3. More than 75% of the commercial airlines use navigation/communication equipment supplied by Collins.
4. The company designs and installs computer systems for the military and for railroads, airlines and many other industrial organizations.
5. Collins serves as the prime contractor on NASA's worldwide Apollo tracking network.
6. The company is recognized as one of the world's leading manufacturers of commercial broadcast equipment.
7. Collins received the first contract awarded to a single company to design, equip and build an earth station for satellite communications.

Contact your College Placement Bureau for additional information.

an equal opportunity employer



## Boggess and Newhouse Lead Prairie View In Dome Meet

BY JOE BOOKER  
Coach Hoover Wright, the boss of Prairie View's crack track team, is making subtle preparation for the up coming track meet at the Astrodome February 13-14.

Last season, when the Astrodome meet was held the Panthers were at the N. A. I. A. meet in Kansas City, Mo. "I'm looking forward to participation in the meet," stated Hoover (Wright) last year's N. A. I. A. coach of the year. "With the date changed for the Dome meet, more SWAC schools will be able to participate."

Wright took his young Panthers to Kansas City for the National meet January 23-24, but came out second (Eastern Michigan was the winner). "Eastern Michigan has a good team," stated Wright. "They have the same boys they had last year."

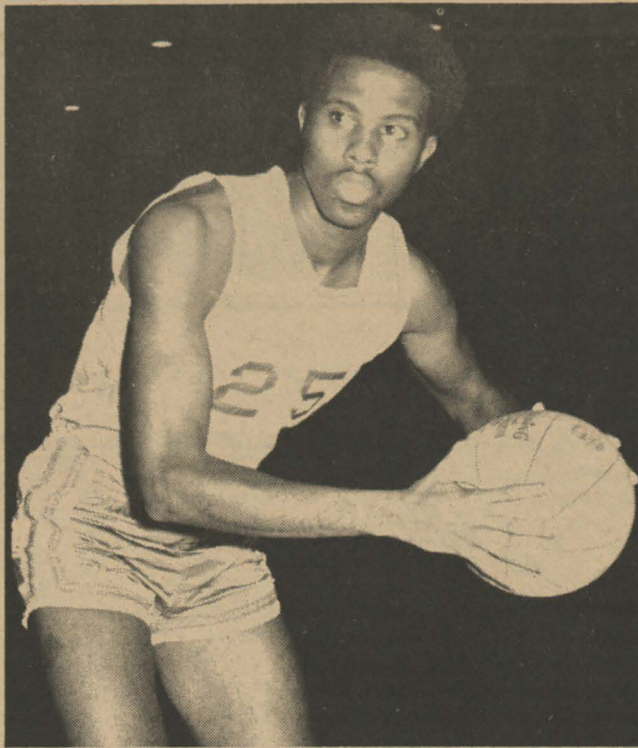
Wright is confident that his team can bounce back and have another banner year. He isn't frowning on second place, but old Panther grads have gotten accustomed to seeing Prairie View win it all.

Even though Felix Johnson, last year's All-American do-it-all performer is

gone, along with James Bagby and Micheal Connors, he's banking on Fred Newhouse and Thurmon Boggess, to lead all Panthers.

Newhouse proved at the N. A. I. A. Indoor meet at Kansas, that he's in top shape and will be going for broke. Boggess' mother passed two weeks ago and he's just coming around to his expected performance.

Wright pointed to: Royce Clay, Clifford McBride, Jessie Ball, T. C. Minor, Henry Henderson, Elton Conger, Fred Patterson, Travis Hill, J. B. Haggerty, Marlin Wade, and David Hall, as better than average returning performers.



Guin

## Guin Directs PV Attack

BY JOE BOOKER  
Herbert Guin, Prairie View's 5-11 freshman guard is a rare breed at Pantherland. As a rookie at Prairie View, the former Charlotte, N. C. All-City whiz has been given full responsibility to command Prairie View's high scoring offense. He is co-captain of the team — also rare for a freshman.

The exciting Guin has captured the eyes of the Prairie View students like no other player has. He has proved to those that watch him perform that the hand is quicker than the eye with his slick ball-handling. PV students flood into the Little Dome in mobs to see him do his thing each time the Panthers play at home.

The enthusiastic and exciting PV fans sit tensely

in suspense of watching Guin streak down the floor. He has the ball — he always has the ball when Prairie View is on offense.

The question is, what is he going to do with it? The packed crowd at PV's Little Dome waits in anticipation, the opposing players obviously have no idea what to expect, even his own teammates can't be sure. In fact, you wonder if he doesn't surprise himself at times.

He dribbles the ball down the court, faking defenders from side to side. Suddenly he whips the ball behind his back to an open teammate heading to the basket.

When one watches Guin in the act, he soon recognizes that Guin is the  
*See GUIN, Page 12*

## Championship Aspirations Still In PV Cage Camp

Its been a long season for Bill Cofield, head basketball Coach at Prairie View.

Even though the Panthers are out of the Southwestern Athletic Conference picture, aspirations for a N. A. I. A. South zone title is possible.

Prairie View is 3-1 in zone play, but in order to stay alive in the South zone, the Panthers must knock off Corpus Christi at Corpus February 21 and dump Huston Tillotson in Austin February 24. It was nip and tuck when the two zone opponents came to Pantherland. Prairie View won both games in overtime.

In a very short time, Cofield has been fully indoctrinated to the SWAC term: "Kill a mosquito with an axe."

Even though opponents out-numbered them in height, the Panthers managed to scare the daylight out of such SWAC powers as Arkansas AM&N, Southern University, Alcorn and Jackson State. With only two seniors on the team, next year could be "The year of the Panther." There'll be two 6-9 guys around — let's see, what's their name? Oh yes, Reynolds and Keyes.

The Panthers must win two more games to equal last year's 8-10 mark, but the Panthers won't be able to surpass last season's 5-7 SWAC record.

We're a diversified company. A big one. Our sales will run more than half a billion dollars this year.

They'll come from computer service, education systems, helicopters, farm equipment, space systems, all kinds of technical services.

And airplanes. Airplanes turn us on. We've built them for going on sixty years.

Our planes scored the nation's top kill ratios against Zeros and again against MiGs.

We've won the Thompson Tro-

phy, the Collier Trophy, and the Doolittle Award.

Our chief exec is a reconstructed test pilot. We've got more fighter jockeys in management than any other company in the country.

Besides our attack airplanes, we're involved in the 747, S-3 and the DC-10 and the SST programs to the tune of hundreds of millions of dollars.

Our simulators are the finest in industry. So is our schedule performance. And our titanium capability. And our record of coming up with growth designs.

This is where you ought to be if you're an AE, EE, ME, or IE with a thing about airplanes.

Talk with our campus rep when he comes to your school. He'll be the guy with the long white scarf.

Or sit down and write us tonight. Address: College Relations Office, LTV Aerospace Corporation, P.O. Box 5907, Dallas, Texas 75222. We're an equal opportunity employer.

Campus Interviews:

Thursday, February 19



**Airplanes turn you on? Join the club.**

**LTV AEROSPACE CORPORATION**

A quality company of Ling-Temco-Vought, Inc. **LTV**

# PV Results at NAIA Meet

60-YARD DASH — Mike Lindon 4th, (6.3), winning time 6-2, Jack Phillips, Grambling.  
 440-YARD DASH — Fred Newhouse 1st, 48.6, Jesse Ball 3rd, 50.5.  
 600-YARD DASH — T. C. Minor 6th, 1:18.0.  
 MILE RELAY — Jesse Ball, Henry Henderson, Alvin Dotson, Fred Newhouse 1st, 3:19.9.



# Another Banner Year in Tennis PV's Sam Lindsay, On the Move

BY JOE BOOKER  
 To say, that Prairie View's top-flight tennis team will be better, is like saying: Joe Namath will release the ball quicker, next season.

Regardless, how paradox it may sound, Sam Lindsay, Prairie View's 1969 SWAC Tennis Coach of the year, is as optimistic about 1970, as a fox in a chicken-yard.

Sam doesn't merely go around shooting off at the mouth, but he'll hint to you names like: Herman Williams, Walter Smith, Joe Robertson and Robert Moolchan. Just to mention those names around SWAC coaches gives them butterflies.

Gone from last years' team is All-SWAC Ben Wright and Alvin Washington. It's hard to think about playing tennis around Pantherland with Ben gone, but Sam is making no squawks about it.

Last season, the tennis team advanced to the N. A. I. A. semi-finals, thus giving Lindsay a lot to laugh about. At the Southwestern Athletic Conference meet last season, Prairie View won its fourth consecutive SWAC title. "It was a good start," said Lindsay, who was in his first year as a tennis coach.

At times, really almost all the time, Sam Lindsay is harder to catch up with than Agnew (Vice-President). He is the chief scout for the football team; head tennis coach; assistant Athletic Director and professor of Health and Physical Education. The only thing he doesn't do is repair a leak on the top of the Little Dome.

Lindsay, who is always in a hurry, finds time to discuss his current tennis team. "I didn't bring in any boys on scholarship this year, because I didn't see any outstanding boys last year," he stated while on one of his speedy missions.

He has two offices, but trying to find him in either, is like trying to find a rabbit taking an evening nap in a doghouse.

Although his job keeps him on the move, he takes great pride in it. He sits down about as often as a chicken and that's not too much.

With the tennis season almost here, hell be even harder to catch.

## Guin Directs

CONTINUED from Page 11 team-leader and star. The audience in the Little Dome doesn't pay much attention to the other nine players on the floor, or even to the scoreboard.

To act is easy; to think is hard.



## \*CEILING AND VISIBILITY UNLIMITED

At Pratt & Whitney Aircraft "ceiling and visibility unlimited" is not just an expression. For example, the President of our parent corporation joined P&WA only two years after receiving an engineering degree. The preceding President, now Chairman, never worked for any other company. The current President of P&WA started in our engineering department as an experimental engineer and moved up to his present position. In fact, the majority of our senior officers all have one thing in common — degrees in an engineering or scientific field.

To insure CAVU\*, we select our engineers and scientists carefully. Motivate them well. Give them the equipment and facilities only a leader can provide. Offer them company-paid, graduate education opportunities. Encourage them to push into fields that have not been explored before. Keep them reaching for a little bit more responsibility than they can manage. Reward them well when they do manage it.

Your degree can be a B.S., M.S., or Ph.D. in: MECHANICAL • AERONAUTICAL • ELECTRICAL • CHEMICAL • CIVIL • MARINE • INDUSTRIAL ENGINEERING • PHYSICS • CHEMISTRY • METALLURGY • MATERIALS SCIENCE • CERAMICS • MATHEMATICS • STATISTICS • COMPUTER SCIENCE • ENGINEERING SCIENCE • ENGINEERING MECHANICS.

Consult your college placement officer — or write Mr. William L. Stoner, Engineering Department, Pratt & Whitney Aircraft, East Hartford, Connecticut 06108.

CAVU\* might also mean full utilization of your technical skills through a wide range of challenging programs which include jet engines for the newest military and commercial aircraft, gas turbines for industrial and marine use, rocket engines for space programs, fuel cells for space vehicles and terrestrial uses, and other advanced systems.



# Pratt & Whitney Aircraft

EAST HARTFORD AND MIDDLETOWN, CONNECTICUT  
 WEST PALM BEACH, FLORIDA

DIVISION OF UNITED AIRCRAFT CORPORATION  
**U  
A**

An Equal Opportunity Employer

"Shop and Save  
 The BILL DOLLAR Way"

826-8121

Mrs. Jessie M. Burks, Mgr.