

Prairie View A&M University

Digital Commons @PVAMU

Annual Catalog

Catalog Collection

4-1945

Annual Catalog - The School Year 1944-1945

Prairie View State Normal and Industrial College

Follow this and additional works at: <https://digitalcommons.pvamu.edu/pv-annual-catalog>

Recommended Citation

Prairie View State Normal and Industrial College. (1945). Annual Catalog - The School Year 1944-1945., *Vol. XXXVI, NO. 6* Retrieved from <https://digitalcommons.pvamu.edu/pv-annual-catalog/44>

This Book is brought to you for free and open access by the Catalog Collection at Digital Commons @PVAMU. It has been accepted for inclusion in Annual Catalog by an authorized administrator of Digital Commons @PVAMU. For more information, please contact hvkoshy@pvamu.edu.

BULLETIN



PRAIRIE VIEW UNIVERSITY

PRAIRIE VIEW, TEXAS



Special Supplement to 1944-45 Catalog Edition

SIXTY-SIXTH
CATALOG EDITION
1944-45

WITH ANNOUNCEMENTS FOR 1945-46

BULLETIN
PRAIRIE VIEW UNIVERSITY

Vol. 36

April, 1945

No. 6

THE SIXTY-SIXTH
ANNUAL CATALOG

1944-45

PRAIRIE VIEW. TEXAS

*This issue of the Bulletin has been reduced considerably because it is the patriotic duty of every institution to conserve labor and material during this war crisis. The minimum essentials for guidance in the offerings at Prairie View University have been included in this Sixty-Sixth Catalogue Edition. Course descriptions have been deleted along with descriptions of permanent equipment; for a detailed description of these please refer to the Sixty-Third, Sixty-Fourth, and Sixty-Fifth Catalogue Editions.

Published quarterly by the Prairie View University, Prairie View College
Branch, Hempstead, Texas

Entered as second-class matter at the Post Office at Prairie View College
Branch, Hempstead, Texas, under the Act of August 24, 1912.

CALENDAR FOR 1915-16

First Semester 1915-16

July 2	Registration of Nurses
September 8-18	Orientation
September 8-9	Faculty Orientation
September 10	Payment of Fees—Juniata Hall Open
September 10-15	Freshman Orientation
September 11-12	Freshman Examinations
September 11-15	Registration
September 17	Classes Begin
September 25	Registration Class
November 13-16-17	Second Semester Examinations
November 29	Thanksgiving Day

RECOGNITION

The Institution is recognized as a class "A" College by the Texas State Department of Education and the Southern Association of Colleges and Secondary Schools. Also, it is approved by the American College of Surgeons.

January 1	New Year's Day
January 31	First Semester Ends

SECOND SEMESTER 1915-16

February 1	Registration Second Semester Begins
February 7	Registration Class
February 22	Washington's Birthday
April 21	San Jacinto Day
May 19-28	Commencement Week
May 28	Second Semester Class

CALENDAR FOR 1945-46

First Semester 1945-46

1 9 4 5

July 2	Registration of Nurses
September 3-16	Orientation
September 5-9	Faculty Orientation
September 10	Payment of Fees—Dining Hall Opens
September 10-15	Freshman Orientation
September 11-12	Freshman Examinations
September 14-15	Registration
September 17	Classes Begin
September 25	Registration Closes
November 15-16-17	Mid-Semester Examinations
November 29	Thanksgiving Day
December 25	Christmas Day

1 9 4 6

January 1	New Year's Day
January 31	First Semester Ends

SECOND SEMESTER 1945-46

February 1	Registration, Second Semester Begins
February 7	Registration Closes
February 22	Washington's Birthday
April 21	San Jacinto Day
May 19-26	Commencement Week
May 31	Second Semester Closes

CALENDAR

1945

1946

1947

JULY

S	M	T	W	T	F	S
1	2	3	4	5	6	7
8	9	10	11	12	13	14
15	16	17	18	19	20	21
22	23	24	25	26	27	28
29	30	31

JANUARY

S	M	T	W	T	F	S
.....	1	2	3	4	5
6	7	8	9	10	11	12
13	14	15	16	17	18	19
20	21	22	23	24	25	26
27	28	29	30	31

JULY

S	M	T	W	T	F	S
.....	1	2	3	4	5	6
7	8	9	10	11	12	13
14	15	16	17	18	19	20
21	22	23	24	25	26	27
28	29	30	31

JANUARY

S	M	T	W	T	F	S
.....	1	2	3	4
5	6	7	8	9	10	11
12	13	14	15	16	17	18
19	20	21	22	23	24	25
26	27	28	29	30	31

AUGUST

S	M	T	W	T	F	S
.....	1	2	3	4
5	6	7	8	9	10	11
12	13	14	15	16	17	18
19	20	21	22	23	24	25
26	27	28	29	30	31

FEBRUARY

S	M	T	W	T	F	S
.....	1	2
3	4	5	6	7	8	9
10	11	12	13	14	15	16
17	18	19	20	21	22	23
24	25	26	27	28

AUGUST

S	M	T	W	T	F	S
.....	1	2	3
4	5	6	7	8	9	10
11	12	13	14	15	16	17
18	19	20	21	22	23	24
25	26	27	28	29	30	31

FEBRUARY

S	M	T	W	T	F	S
.....	1
2	3	4	5	6	7	8
9	10	11	12	13	14	15
16	17	18	19	20	21	22
23	24	25	26	27	28

SEPTEMBER

S	M	T	W	T	F	S
.....	1
2	3	4	5	6	7	8
9	10	11	12	13	14	15
16	17	18	19	20	21	22
23	24	25	26	27	28	29
30

MARCH

S	M	T	W	T	F	S
.....	1	2
3	4	5	6	7	8	9
10	11	12	13	14	15	16
17	18	19	20	21	22	23
24	25	26	27	28	29	30
31

SEPTEMBER

S	M	T	W	T	F	S
1	2	3	4	5	6	7
8	9	10	11	12	13	14
15	16	17	18	19	20	21
22	23	24	25	26	27	28
29	30

MARCH

S	M	T	W	T	F	S
.....	1
2	3	4	5	6	7	8
9	10	11	12	13	14	15
16	17	18	19	20	21	22
23	24	25	26	27	28	29
30	31

OCTOBER

S	M	T	W	T	F	S
.....	1	2	3	4	5	6
7	8	9	10	11	12	13
14	15	16	17	18	19	20
21	22	23	24	25	26	27
28	29	30	31

APRIL

S	M	T	W	T	F	S
.....	1	2	3	4	5	6
7	8	9	10	11	12	13
14	15	16	17	18	19	20
21	22	23	24	25	26	27
28	29	30

OCTOBER

S	M	T	W	T	F	S
.....	1	2	3	4	5
6	7	8	9	10	11	12
13	14	15	16	17	18	19
20	21	22	23	24	25	26
27	28	29	30	31

APRIL

S	M	T	W	T	F	S
.....	1	2	3	4	5
6	7	8	9	10	11	12
13	14	15	16	17	18	19
20	21	22	23	24	25	26
27	28	29	30

NOVEMBER

S	M	T	W	T	F	S
.....	1	2	3
4	5	6	7	8	9	10
11	12	13	14	15	16	17
18	19	20	21	22	23	24
25	26	27	28	29	30

MAY

S	M	T	W	T	F	S
.....	1	2	3	4
5	6	7	8	9	10	11
12	13	14	15	16	17	18
19	20	21	22	23	24	25
26	27	28	29	30	31

NOVEMBER

S	M	T	W	T	F	S
.....	1	2
3	4	5	6	7	8	9
10	11	12	13	14	15	16
17	18	19	20	21	22	23
24	25	26	27	28	29	30

MAY

S	M	T	W	T	F	S	
.....	1	2	3
4	5	6	7	8	9	10	11
12	13	14	15	16	17	18	19
20	21	22	23	24	25	26	27
28	29	30	31

DECEMBER

S	M	T	W	T	F	S
.....	1
2	3	4	5	6	7	8
9	10	11	12	13	14	15
16	17	18	19	20	21	22
23	24	25	26	27	28	29
30	31

JUNE

S	M	T	W	T	F	S
.....	1
2	3	4	5	6	7	8
9	10	11	12	13	14	15
16	17	18	19	20	21	22
23	24	25	26	27	28	29
30

DECEMBER

S	M	T	W	T	F	S
1	2	3	4	5	6	7
8	9	10	11	12	13	14
15	16	17	18	19	20	21
22	23	24	25	26	27	28
29	30	31

JUNE

S	M	T	W	T	F	S
1	2	3	4	5	6	7
8	9	10	11	12	13	14
15	16	17	18	19	20	21
22	23	24	25	26	27	28
29	30

OTHER OFFICERS AND ASSISTANTS

Sergeant Quinton T. Allen, Infantry, Instructor.
 Mrs. Ella Mae Bennett-Clark, Clerk-Stenographer, Military Office.
 Mrs. Louisa Taylor Bonham, B.S., Itinerant Teacher-Trainer.
 Andrew E. Charleston, Engineer, Steam Plant.
 James E. Dailey, B.S., Electrician.
 Miss Dorothy Hamilton, Head Telephone Operator.
 Lieutenant Tolbert Harris, 1st. Lieutenant, Infantry, Assistant Professor of Military Science.
 Mrs. Sophia Tucker Hilliard, A.B., Custodian of Auditorium-Gymnasium.
 Corporal Kenith Johnson, Infantry, Instructor.
 William S. Kidd, Plumbing Repairman.
 Miss Faye McClellan, B.S., Stenographer, Agricultural Division.
 Mrs. Robert A. Martin, Telephone Operator.
 Staff Sergeant Harry Moody, Infantry, Instructor.
 Mrs. Leressa Cathey Reaves, A.B., Secretary, Hospital.
 Alfred Richards, Engineer, Steam Plant.
 Miss Eunell Sadberry, Telephone Operator.
 Miss Pauline Wall, M.S., Secretary, Division of Mechanic Arts.
 Addison I. Watson, Engineer, Steam Plant.
 Will West, Fireman, Steam Plant.

'OFFICERS OF INSTRUCTION

(Dates immediately following positions indicate when persons were appointed to the faculty of Prairie View University)

- ****ABERNETHY**, Joseph J., Director, ESMWT; 1916. B.S., Kansas State College, 1916; M.S., 1934.
- ARNOLD**, Harry R. C., Jr., Printing, 1942. Trade Certificate, Tuskegee, Institute, 1933; B.S., Tuskegee Institute, 1935.
- BANKS**, Mrs. Teresa Luck, Psychology; 1944. B.S., 1936; M.S., 1938; Howard University.
- ***BELL**, George C., Printing, 1933. Trade Certificate, Tuskegee, Institute, 1928; Kansas State Teachers College, Summers, 1936, 1937.
- BENNETT**, Will Henry, Music, 1936. A.B., Morehouse College, 1931; University of Iowa, 1934-35; University of Colorado, Summer, 1940.
- BLAND**, Miss Reda Lee, Mathematics; 1944. B.S., 1936; M.S., 1944; Prairie View State College.
- BLANKS**, Miss Vittoria C., English; 1944. B.A., 1943; M.S., 1944; Prairie View State College.
- BOSTIC**, Mrs. Louise E., Commercial, 1942. B.S., West Virginia State College, 1930.
- BROOKS**, George William, History, 1943. B.S., Indiana University, 1941; M.S., Indiana University, 1942.

¹The committee of the faculty is now working on ranks and tenure. In this issue of the Prairie View Bulletin the ranks of the faculty members are left out, pending the adoption of the recommendations of the Committee on Rank and Tenure.

**On Leave

*Part Year

- *BROWN, Mrs. Claudia O'Neal, Business Administration, 1943. B.S., Madison Business College, 1943; Groves-Barnhardt College, Summer, 1942.
- BROWN, Jonel Leonard, Economics, Head, Department of Economics and Business Administration, 1943. A.B., Morehouse College, 1930; M.A., University of Wisconsin, 1941; University of Wisconsin, 1941-42, 1942-43, (Residence completed toward Ph.D.)
- BRYANT, Mrs. Daisy B., Superintendent of Nursing, 1943. Diploma in Nursing Education, Prairie View State College, 1938.
- BULLOCK, Henry Allen, Sociology, Head, Department of Sociology, Social Service, and Research; 1930. A.B., Virginia Union University, 1928; A.M., University of Michigan, 1929; Ph.D., University of Michigan, 1942.
- BURDINE, Miss Dorothy I., Education; 1933, 1938. B.A., Colorado State College of Education, 1927; A.M., Colorado State College of Education, 1933; University of Denver, Summers 1936, 1942.
- BURNEY, Miss Rosemma Marie, Home Economics, 1944. B.S., Spelman College, 1942; M.A., Columbia University, 1943.
- BURNS, Mrs. Lillie Paley, Home, 1941. B.S., Prairie View State College, 1934; M.S., Kansas State College, 1941.
- BUTTS, James Richard, Chemistry, 1943. B. S., Virginia State College, 1934; M.A., University of Michigan, 1938; University of Michigan, 1939-40, 1940-41, (Residence completed toward Ph. D.)
- CAMPBELL, Miss Anna L., English, Acting Head, Department of English, 1930. A.B., Bradley Polytechnic Institute, 1927; M.A., Northwestern University, 1935; Northwestern University, Summer, 1941.
- CARPENTER, Charles E., French, Head, Department of Languages; 1925. B.L., University of California, 1901; M.L., University of California, 1908; Kansas State Teachers College, Summers, 1923, 1925; University of Kansas, Summer, 1932; University of Iowa, Summers 1935, 1937, 1940, one semester 1940-41.
- CARR, Ethbert Spelman, Agriculture, 1942. Hampton Institute, 1934-36. B.S., Ohio State University, 1941.
- CARTER, Miss Esther E., Education; 1944, B.A., Western University, 1928; M.S., University of Colorado, 1935.
- CHARLTON, Rudolph Everett von, Music, Head, Department of Music; 1942. B.S., Hampton Institute, 1941; A.M., University of Michigan, 1939; Juilliard School of Music, Summers, 1932, 1935, one semester, 1936-37; New England Conservatory of Music, Summers 1928, 1929, 1930; L'Academie de la Musique in England, 1931.
- CLEAVER, Arthur G., Broom and Mattress Making; 1926. Diploma, Prairie View State College, 1911; Certificate in Broom and Mattress Making and Agriculture, 1911; Student Tuskegee Institute, Summer, 1924.

- *PHILLIP, Mrs. Jimmie Ruth, Home Economics; 1944. B.S., in Home Economics, 1928; M.S., in Home Economics, 1944; Prairie View State College.
- PHILLIP, Lee C., Social Science, College Chaplain; 1928, 1932. B.S., Prairie View State College, 1928; B.D., Howard University, 1931; Graduate Work. Union Theological Seminary, New York City, 1931-32; M.A., Howard University, 1939.
- *POTTS, Lawrence A., Rural Education; Director, Division of Agriculture, 1925, B.S., Iowa State College, 1925; M.S.A., Cornell University, 1932.
- PRATT, Miss E. Theresa M., Home Economics; 1943. B.S., Prairie View State College, 1935; Prairie View, 1942; University of Colorado, 1943.
- RANDALL, Albert W., Mathematics, Head, Department of Mathematics; 1923. B.S., Alcorn A. & M. College, 1916; A.M., University of Colorado, 1929; Summers, 1937, 1940.
- RAYFORD, Robert W., Dry Cleaning and Tailoring; 1934. Certificate in Dry Cleaning and Spotting, 1916; Certificate in Dry Cleaning and Redyeing, 1938.
- *REAVES, Lieut. John Ray, Military Science and Tactics; 1942. A.B., Virginia State College, 1933; New York University, 1935; Columbia 1940; Infantry School, Ft. Benning, Ga., 1942.
- REEVES, George W., Education; 1930. A.B., Atlanta University, 1924; A.M., University of Michigan, 1932; University of Michigan, Summer, 1938; North Carolina College for Negroes, Work Shop, Summer, 1942.
- REYNOLDS, Miss Lois Arnell, Sociology; 1943. A.B., Prairie View State College, 1941; M.S., Prairie View, 1942.
- SHEEN, Edwin Drummond, English; 1943. A.B. James Millikin University, 1925; M.A., University of Illinois, 1927; University of Chicago, Quarter of 1929; 1936-37; Summer, 1938; 1941-42, Summer, 1942; Northwestern University, Summers, 1930 and 1931.
- SHEEN, Mrs. Roma S., Mathematics; 1944. B.S., Tennessee Agricultural and Industrial College, 1934; M.S., University of Iowa, 1935; University of Illinois, 1935-36.
- SHELTON, Mrs. Susie J., Foods; 1944. B.A., University of Illinois, 1942.
- SMITH, George L., Poultry Husbandry, Director,* Division of Agriculture; 1931. B.S., Hampton Institute, 1929; M.S., Kansas State College, 1941.
- SMITH, John Milton, Economics; 1944. A.B., 1931; S.T.B., M.A. 1934; Lincoln University; S.T.M., Western Theological Seminary, 1935; Ph.D., University of Iowa, 1941; University of Pittsburgh, 1st semester, 1935; Harvard University, S-1936, 1936-37.
- SOLOMON, Thomas R., Political Science, Head, Department of History, Philosophy, and Political Science; 1939. A.B., Wayne University, 1929; M.S., 1933; Ph. D., University of Michigan, 1939.

- SPALDING, Sydney W., English; 1944. A.B., Eureka College, 1929; A.M., University of Illinois, 1930; University of Michigan, 1933-34, 1937-39.
- *TAYLOR, Bennie E., Romance Languages; 1943. A.B., University of Iowa, 1931; M.A., University of Kansas, 1941; University of Iowa, 1932-33; University of Kansas, 1941-42.
- TAYLOR, Mrs. Cecelia J., Physical Education; 1944. B.S., in Education, University of Cincinnati, 1942.
- THOMAS, Mrs. Bessie A., Education; 1942. B.S., 1938; M.S., 1942; Prairie View State College.
- THOMAS, Oscar J., Itinerant Teacher Trainer; 1938. B.S., Prairie View State College, 1926; Hampton Institute, Summer, 1931; University of Chicago, Summer, 1934; Columbia University, Summer, 1936; M.S., Prairie View State College, 1945.
- THOMPSON, Wardell D., Agriculture; 1944. B.S., in Agriculture, Prairie View State College, 1940.
- VAN IRVIN, Aldred, Physic and Mathematics; 1943. A.B., Fisk University, 1931; M.S., University of Michigan, 1938; University of Illinois, 1940-41; 1941-42, Summers, 1941 and 1942.
- WALKER, LeRoy T., Physical Education, Head, Department of Physical Education; 1943. A.B., Benedict College, 1940; M.A. Columbia University, 1941.
- WALLACE, James C., Resident Dentist; 1945. B.S., Wiley College, 1942; M.D.S., Meharry Dental College, 1945.
- WARTMAN, Miss Frances Edmonia, Music; 1942. B.S., Virginia State College, 1940; University of Michigan, 1940-41.
- WELLS, Thelma S., Prairie View Training School; 1942. B.S., 1930; M.S., 1940; Prairie View State College.
- WILLIAMS, Mrs. Elizabeth Strain, Music; 1943. B.M., Talladega College, 1937; M. Mus., Sherwood School of Music, 1940; Juilliard School of Music, Summer, 1942.
- WILLIAMS, John Calvin, Animal Husbandry, 1940. B.S., Hampton Institute, 1932; M.S., Kansas State College, 1940.
- WILSON, Claude L., Mechanical Engineering, Director, Division of Mechanic Arts; Superintendent of Buildings and College Utilities; B.S., Mechanical Engineering, 1925; M.E., 1929; M.S., Kansas State College, 1933.
- WILSON, Jessie M., Tailoring; 1931. Certificate in Tailoring, Tuskegee Institute, 1927; Certificate in Designing, Master Designer's School of Designing, 1934; B.S., Kansas State Teachers College, 1941.
- *WILSON, Miss Juanita Burrell, Home Economics; 1944. A.B., Fisk University, 1931; M.A., Columbia University, Teachers College, 1939.
- WILSON, Mrs. Lucelustine W., Education; 1943. B.S., Prairie View State College, 1926; M.S., Prairie View, 1943.

WINDOW, John Henry, Education, Head, Department of Education; 1942. B.S., University of Illinois, 1932; M.S., University of Illinois, 1937; Teachers College, Columbia University, Summers, 1938, 1939; Indiana University, 1940-41.

WOOLFOLK, George Ruble, History; 1943. A.B., Louisville Municipal College, 1937; M.A., Ohio State University, 1938; University of Wisconsin, 1940-43. (All work completed toward Ph. D. except Thesis.)

GRADUATE FELLOWS

for the Year 1944-45

*Boone, Mrs. Lolita LaVera; A.B., Tillotson College, 1942.
 Dean, Mrs. Julia Kittrell; A.B., Texas College, 1942.
 Ellis, Mrs. Delia Mae Hall; B.S., Prairie View College, 1935.
 Johnston, William C.; B.S., Prairie View College, 1934.
 *McCauley, Mrs. Helen G.; A.B., Samuel Huston College, 1930.
 Nicholas, Mrs. Josephine Colston; B.S., Florida Agricultural and Mechanical College, 1935.
 Perry, Miss Douglass; A.B., Prairie View College, 1943.
 Puryear, Mrs. Bryte Hoover; B.S., Winston Salem State Teachers College, 1941.
 Randall, Mrs. Beatrice Hogan; B.S., Prairie View College, 1927.

CORRESPONDENCE DEPARTMENT

T. R. Solomon, Ph. D., Chairman

The following courses are offered through the Correspondence Department at Prairie View University:

History 213C	History of the United States
History 113C	European History
Education 113C	Introduction to Education
Education 313C	Principles of Secondary Education
English 113C	Grammar and Composition
Economics 213C	Principles of Economics
Math 173 & 183C	Elementa of Applied Mathematics
Phy Ed 223C	Personal Hygiene
Poli Sci 1x3	The Government of Texas and the United States

The Texas State Department of Education accepts the completion of these courses.

COOPERATIVE EXTENSION WORK

W. C. David, Acting State Leader, Negro Extension Work

**E. B. Evans, State Leader, D.V.M., Iowa State College, Summer, 1924, 1928, 1934.
 W. C. David, Acting State Leader and Agriculturist, Recruitment and Placement Division, Farm Labor Program; Normal Diploma in Agriculture, Prairie View State College; B.S., in Pharmacy, Howard University, 1924; Prairie View State College, Summers, 1939, 1941.
 Marshall V. Brown, Administrative Assistant; B.S., in Agriculture, 1931, Prairie View State College; Prairie View College, Summers, 1939, 1941, 1942, 1942-43 (1).
 Mrs. Iola W. Rowan, Supervising District Home Demonstration Agent; B.S., in Home Economics, Prairie View State College, 1931; Prairie View State College, 1939-40, 1940-41, 1942-43 (1) Summers, 1940, 1941, 1942.

*Part Year

**On leave.

- Henry S. Estelle, District Agent; B.S., in Agriculture, Prairie View State College, 1932; Prairie View State College, 1938-39; 1939-40; 1942-43 (1), Summers, 1939, 1941, 1942.
- Mrs. Jeffie O. Conner, District Home Demonstration Agent; B.S., in Home Economics, Prairie View State College, 1934; M.S., Prairie View State College, 1944.
- Mrs. Pauline R. Brown, District Home Demonstration Agent; B.S., in Home Economics, Prairie View State College, 1931; Prairie View State College, Summers, 1939, 1941, 1942.
- W. H. Phillips, District Agent; Normal Graduate, 1912, Prairie View State College, Summers, 1930, 1939, 1941, 1942.
- John E. Mayo, Acting District Agent; Normal Graduate, Prairie View State College, 1913, Prairie View State College Summers, 1929, 1930, 1941.
- Miss Eugenia A. Woods, Food Specialist; Teacher Trainer Diploma, Tougaloo College, Mississippi.
- Miss Quincy M. Cunningham, State Emergency War Food Assistant; Jan. 1-June 30. B.S., in Home Economics, Prairie View State College, 1935; Prairie View State College, Summers, 1939, 1941, 1942.
- J. V. Smith, State Farm Labor Supervisor; Normal Graduate in Agriculture, 1912, Prairie View State College, Summers, 1930, 1939, 1941, 1942.
- Miss Ezra Lee Henderson, September, 1944-June, 1945. Secretary to Agricultural Extension Department.
- *Miss Ruth E. Vaughn, Secretary to Agricultural Extension Department.
- Mrs. Ruby O. Abernethy, Secretary to Home Demonstration Extension Service Department; B.S., in Home Economics, Prairie View State College, 1931; Summers, 1941, 1943, 1944.
- Mrs. Leola Lee, Emergency War Food Assistant Secretary.
- *Miss Gloria Gerald, Farm Labor Secretary; B.S., in Home Economics, Prairie View State College, 1945.

PRAIRIE VIEW EXTENSION SCHOOLS

J. L. Bown, M.A., Director.

Prairie View has four extension schools now in operation. They are as follows: Brenham Extension, Centerville Extension, Galveston County Extension, and La Grange Extension.

ENGINEERING, SCIENCE AND MANAGEMENT WAR TRAINING PERSONNEL

Prairie View University

Abernethy, Joseph J., Coordinator of Engineering, Science and Management War Training for Negroes of Texas; B.S., Kansas State College, 1916; M.S., Kansas State College, 1934.

*Part year

Houston, Nolan E., Radio Engineer; Certificate in Radio Engineering, National Radio Institute.

*Marshall, Marylouise, Secretary, ESMWT; Trade Certificate. Typing and Shorthand, Prairie View State College, 1941.

*McGowan, Clarence R., Instructor of Engineering Drawing; B.S., Prairie View State College, 1943.

Houston, Texas

*Burch, Irving B., Industrial Chemistry; B.A., Fisk University, 1927; Graduate Study in Bio-Chemistry, University of Minnesota.

Guess, Connie L., Radio Engineering; B.S., Prairie View College, 1936.

Jordan, Adolph E.; B.S., Tillotson College, 1920; Ph. C., Meharry Medical College, 1924; Radio Engineering and Communication Certificate, Radio and Television Laboratory.

Mims, Alfred J., Radio Communication; B.S., Civil Engineering, Howard University, 1936.

*Moore, William, Technical Mathematics; B.A., Fisk University, 1928.

*Rieras, Jose H., Engineering Drawing; B.S., Southern University, 1941.

Scholars, Robert M., Engineering Drawing; Trade Certificate, Prairie View State College, 1928; B.S., Houston College for Negroes.

Dallas, Texas

*Henderson, Fred B., Radio Technician.

*Lipscomb, Benjamin B., Radio Technician; E.E., University of Iowa, 1933.

EXECUTIVE CABINET

Principal W. R. Banks, Chairman.

*Lawrence A. Potts, Director, Division of Agriculture.

*George L. Smith, Director, Division of Agriculture.

Miss Elizabeth C. May, Director, Division of Home Economics.

Claude L. Wilson, Director, Division of Mechanic Arts.

Dr. J. M. Drew, Director, Division of Arts and Sciences.

Dr. J. M. Franklin, Director, Division of Health.

Harvey R. Turner, Treasurer.

Dr. Ernest M. Norris, Chairman, Committee on Graduate Studies.

Dr. Thomas R. Solomon, Registrar-Coordinator of Instruction.

Orestes J. Baker, Librarian.

Robey W. Hilliard, Personnel-Manager of Dining Hall.

*Part Year

- **Dr. Edward B. Evans, State Director, Extension Service for Negroes.
- *W. C. David, State Director, Extension Service for Negroes.
- Mrs. Iola W. Rowan, State Supervisor, Home Demonstration Agents for Negroes.
- Miss M. E. Suarez, Dean of Women.
- I. T. Nelson, Dean of Men.
- George W. Buchanan, College Exchange.
- Napoleon B. Edward, Executive Secretary.
- *Colonel West A. Hamilton, Military Personnel.
- *First Lieut. John R. Reaves, Military Personnel.

THE ALUMNI AND EX-STUDENTS ASSOCIATION

The Alumni and Ex-Students Association of Prairie View State College was organized in 1901. Graduates and all students who have been honorably dismissed are eligible for membership.

The Association maintains an executive office at the College.

Officers of the Association

H. S. Estelle, President, Prairie View; Jessie T. Robertson, First Vice-President, Houston; R. W. Hilliard, Executive Secretary, Prairie View; Lula M. White, Recording Secretary, Houston; A. W. McDonald, Parliamentarian, Galveston; Frank Robinson, Chaplain, Palestine; N. N. Tarver, Sgt.-at-Arms, Wharton.

Alumni Day is observed annually on the Saturday before Commencement Day of the regular session.

*Part Year

**On Leave

General Information

LOCATION

Prairie View University is located in Waller County, forty-six miles northwest of Houston. Daily trains over the Southern Pacific Railroad discharge passengers at Prairie View. Taxi service is available to and from all trains.

PURPOSE

Three separate and distinct functions of Prairie View University are clearly set forth in State and Federal acts for its establishment and support.

First. It is a normal school for the preparation and training of colored teachers.

Second. It is a four-year college offering liberal arts and scientific curricula.

Third. It is the Negro Land Grant College of Texas, providing opportunities for training in Agriculture, Home Economics, Mechanic Arts and related branches of learning.

In addition, the institution offers training in health education so that it may give to the State professionally trained nurses and provide opportunities for observation and practice to newly graduated students of medical colleges.

Prairie View University attempts to serve the colored citizens of Texas at the point of their greatest needs and endeavors to bring the students' training into closer relationship with life's occupations.

The central theme of the philosophy of the institution is that education must have the objective of making a worthwhile life and a respectable living.

INSTRUCTIONAL ORGANIZATION

The institution is organized for instruction into six major divisions, as follows:

- The Division of Agriculture.
- The Division of Arts and Sciences.
- The Division of Home Economics.
- The Division of Mechanic Arts
- The Division of Nursing Education.
- The Division of Graduate Study.

HISTORY

The Fifteenth Legislature of the State of Texas met in the year 1876. One of the acts of that Legislature provided for the establishment of "an agricultural and mechanical college" for Negro citizens to be

located in Waller County. In that year L. M. Minor was elected first principal of the school. He served in this capacity until 1880. In the last year of his principalship a legislative act provided for reorganization of the college and made available funds for the training of public school teachers therein. The second principal, E. H. Anderson, served from 1880 to 1884, and L. C. Anderson, the third principal, held the position for the next twelve years. The gray stone Administration Building, whose architectural design is widely admired, was erected in 1889, and the Old Agriculture Building was erected in 1890.

For the next fifteen years, E. L. Blackshear served "Prairie View Normal" as principal. During his administration, significant growth was made in the curriculum and the plant. In 1899 the name became "Prairie View State Normal and Industrial College," and the new name indicated the enlargement of the curriculum: A four-year college course was authorized by the State Legislature in session in 1901. Among additions to the plant were: two dormitories for men, Foster Hall (1909) and Luckie Hall (1909); a dormitory for women, Crawford Hall (1912); and a combination Auditorium-Gymnasium-Dining Hall Building (1911).

I. M. Terrell, the fifth principal, held the position during the war years 1915-1918. Despite the stricture of the world conflict, the school plant expanded widely to accommodate mechanic and household arts: A Household Arts Building, the Power and Ice Plant, and the Laundry were erected in 1916; and in 1918 Spence Building, for the Division of Agriculture was erected.

The sixth principal of Prairie View State College was J. G. Osborne, whose tenure lasted from 1918 to 1925. Six buildings were added to the College in 1924 and 1925. The Veterinary Hospital, the Science Building, the College Exchange, the Elementary Training School, a Home Economics Practice Cottage, and a Music Conservatory.

In 1926 W. R. Banks became the seventh principal of Prairie View State College. He is the present incumbent, having held the position now longer than any of his predecessors. Prairie View has developed along several lines in the past decade and a half. The physical plant has doubled its size, now having four one-hundred-thousand-dollar buildings—the Dining Hall and the Hospital, three apartment houses for men teachers, three dormitories for women, a green house, an incubator house, a class room building, a new Auditorium-Gymnasium, a new Mechanic Arts Building, and over sixty cottages for college families.

A corresponding growth of educational emphasis at Prairie View has taken place in the last fifteen years. One of the significant studies of the period was an exhaustive examination of the objective and purposes of Prairie View College in 1933-34. Out of this study emerged Principal Banks' most often quoted statement: "Prairie View College must serve the state of Texas at the points of her greatest needs." The establishment of the Prairie View Conference of Education in 1931 is an important event in the history of the College; it illustrates one of the attempts to serve the state at the points of greatest needs. In the twelve years that the Conference has met, Prairie View has been host to educators, ministers, business men and women, housewives, social workers, farmers, men and women of Texas from all walks of life. These citizens have met together and discussed every phase of Texas life, from the facilities for educating Negro citizens to the training of domestic servants.

In the establishment of the Division of Graduate Study in 1937 Prairie View College added another page to its expanding history.

In 1936 when the first of a series of buildings was built to house the N. Y. A. residence center at Prairie View, a new chapter in Vocational Training for youth was opened. The project was originally designed to aid both boys and girls in getting work experience in some desirable field of work. The project was enlarged and made a training center for Negro boys in critical occupations for support of the war effort. The boys from this project filled positions as welders, mechanics, pipe fitters, machine operators, and molders in shipyards, foundries, and machine shops all over the nation. The project terminated in July, 1943. The facilities are now being used for vocational and trade courses in which returning veterans will find an ever widening opportunity.

In July, 1943, a training unit of the Army Specialized Training Program was established with a maximum strength of 200 trainees enrolled in BE-1 Curriculum.

The Forty-Ninth Legislature passed the bill making Prairie View State College a university to offer as the need arises all courses offered at the University of Texas.

Prairie View is trying to serve the people of Texas at the points of their greatest needs.

A corresponding growth of educational emphasis at Prairie View has taken place in the last fifteen years. One of the significant studies of the period was an exhaustive examination of the objectives and purposes of Prairie View College in 1933-34. One of the study's findings was that the college must serve the state of Texas at the points of her greatest needs. The establishment of the Prairie View Conference of Education in 1937 is an important event in the history of the College; it illustrates one of the attempts to serve the state at the points of greatest needs. In the twelve years that the Conference has met, Prairie View has been host to educators, ministers, business men and women, housewives, social workers, farmers, men and women of Texas from all walks of life. These citizens have met together and discussed every phase of Texas life, from the facilities for educating Negro citizens to the training of domestic servants.

STATEMENT OF THE CHRONOLOGICAL

Date of Construction	Building	Value
1889	The Administration Building	\$ 35,000.00
1909	Poster Hall	25,000.00
1909	Luckie Hall	25,000.00
1912	Crawford Hall	15,000.00
1916	Minor Hall	55,000.00
1916	The Household Arts Building	55,000.00
1916	The Power and Ice Plant	35,000.00
1916	The Laundry	30,000.00
1918	Spence Building	60,000.00
1922	Guest House (formerly Walker Hall)	7,200.00
1924	Science Building	70,000.00
1924	The College Exchange	14,000.00
1925	The Veterinary Hospital	15,000.00
1925	Elementary Training School	9,000.00
1925	Home Economics Practice Cottage	5,000.00
1925	The Music Conservatory	3,000.00
1926	Blackshear Hall	36,000.00
1926	Woodruff Hall	36,000.00
1926	The Warehouse and Filling Station	6,000.00
1928	Evans Hall	100,000.00
1928	The Farm Shop Building	1,800.00
1929	The Hospital	100,000.00
1930	The Industrial Engineering Building	90,000.00
1931	The Education Building	75,000.00
1933	Anderson Hall	56,000.00
1934	The Greenhouse	1,000.00
1932	Hermitage	2,477.74
1932	Bellaire	2,477.73
1935	Alta Vista	2,770.10
1936	The Incubator House	17,000.00
1936	The National Youth Administration Dormitory for Girls	3,411.34
1937	The National Youth Administration Dormitory for Boys	3,792.74
1938	The Gymnasium-Auditorium	55,000.00
1939	The Dining Hall	100,000.00
1940	Farm Project Unit (2)	3,600.00
1941	Schuhmacher Hall	50,200.00
1941	Filling and Fire Station	4,400.00
1941	National Youth Administration Dormitory No. 3	1,700.00
1942	New Farm Shop Building	2,300.00
1943	Sandwich Shop Building	300.00
1944	W. R. Banks Library	192,742.00

NOTE: In addition to the above buildings, there are three apartments valued at \$8,000.00 and fifty-four cottages with a total value of \$100,000.00.

THE W. R. BANKS LIBRARY

The Library, named in honor of the present chief executive, is located between Evans and Luckie Halls, just south of the Administration Building. It has a book capacity of some 100,000 volumes and study space for some 600 students simultaneously. Its beautiful, convenient, and comfortable study places include the Reserve Reading Room, Reference Service Room, and Graduate Study Room. Four seminar rooms are available on the basement floor for group study. Recreational reading may be done in the well appointed Popular Reading Room and the artistic tastes of students will be fostered in Exposition Hall and in the Art Room.

The various collections will consist of well selected books, periodicals, and other study materials for reference, collateral, cultural, and recreational reading and for research purposes.

To secure the greatest benefit from the services made available to readers in the Library each reader must become acquainted with the library rules and regulations and should seek timely guidance from the qualified members of the library staff.

EXTRA-CURRICULA ACTIVITIES

RELIGIOUS INFLUENCES

While no particular denominational influence is exerted at Prairie View University, the authorities of the institution are thoroughly committed to the belief that religious training benefits the student. A chaplain has charge of the religious activities which include Sunday School, Morning Worship, Vesper Services, and Weekly Prayer Meeting.

The Young Men's Christian Association and the Young Women's Christian Association supply, in a large measure, spiritual and moral guidance to the men and women students.

STUDENT ORGANIZATIONS

Wholesome influence is exercised through the following student organizations: The Alpha Pi Mu Honorary Society, The Mu Alpha Club, The Dilettante Literary Society, The Beta Pi Chi Scientific Society, The Sigma Nu Debating Club, The Charles Gilpin Dramatic Club, The Home Economics Club, The New Farmers of America, The Mechanic Arts Club, The College Chorus, Mixed Glee Club, Male Chorus, Women's Glee Club, Concert Choir, Quartettes, Orchestras, Band, The Mu Alpha Sigma Honorary Society, and "The Panther", the student paper, which is issued monthly by the students of the college.

ATHLETICS

The Department of Athletics projects two distinct programs: The varsity or inter-collegiate program, and the intramural program. The varsity program includes football, basketball, track, and tennis. All sports are under the supervision of persons who have been outstanding in their coaching fields.

Intramural sports include tennis, volleyball, basketball, baseball, football, indoor baseball, and track. Every student who attends the institution is required to participate in at least one intramural sport. At the close of the intramural season, there is staged a field day in which all the classes participate.

PRIZES

The following prizes are awarded annually:

1. The Julius Rosenwald Memorial Award.
2. The Harrison-Valien Scholarship Prize.
3. The T. K. Lawless Prize.
4. The E. M. Richardson Prize.
5. The Prairie View Hospital Staff Prize.
6. The L. O. Jones Prize.

FELLOWSHIPS

The following fellowships are awarded annually:

1. State Fellowships for Graduate Students.

REGULATIONS

DISCIPLINE AND GOVERNMENT

The college compels no student to enroll nor to remain who finds that he cannot meet its requirements cheerfully. A student who cannot meet the requirements and whose conduct is not in accord with the principles and ideas of the college will be asked to withdraw.

HAZING

Hazing is prohibited by law in state educational institutions of Texas. The law provides: that "Any student of any state educational institution of Texas who commits the offense of hazing shall be fined not less than \$25.00 nor more than \$250.00 or shall be confined not less than ten days nor more than three months, or both."

EXPENSES AND FEES

(These fees are subject to change without notice.)

INITIAL EXPENSES PER SEMESTER

The current food War Ration Book must be deposited in the Fiscal Office when fees are paid.

Payable September 10, 1945—MEN

Matriculation for first semester	\$ 25.00
(Including regular laboratory fees)	
*Maintenance	16.80
Activity Fee (Optional)	5.00
Uniform (Fitting)	1.50
Total	\$ 48.30

Payable September 10, 1945—WOMEN

Matriculation for first semester	\$ 25.00
(Including regular laboratory fees)	
*Maintenance	16.80
Activity Fee (Optional)	5.00
Total	\$ 46.80

Payable February 1, 1946—BOTH MEN AND WOMEN

Matriculation for second semester	\$ 25.00
(Including regular laboratory fees)	
*Maintenance for February, 1946	24.00
Activity Fee (Optional for those not enrolled the first semester)	2.50
Total	\$ 51.50

*Maintenance is \$24.00 per month and payable before the 10th of each month. If paid after the tenth, a late fee of one dollar (\$1.00) is assessed.

NOTE:

1. Every student who does not enroll until the beginning of the second semester will provide himself with \$2.50 for activity fee, key deposit of \$.50, the matriculation fee of \$25.00, and the maintenance charge of \$24.00 for February. Male students' uniforms are furnished by the government; however, they are to bring \$10.00 to purchase R. O. T. C. Manual and uniform to supplement that issued by the government. A woman's uniform costs about \$7.00.

2. The Forty-third Session of the Texas Legislature passed a law requiring all State supported institutions to charge a minimum fee of \$50.00 for matriculation for the long session.

BOARD AND MAINTENANCE

Maintenance charges will be adjusted to commodity price scales. Every effort will be made to keep maintenance charges at the lowest possible figure. While at this time, uncertainties in the commodity market make it impossible for us to announce definite fixed monthly maintenance charges for the 1945-46 session, we anticipate a figure which will be \$24.00 each month. This amount falls due on the first of each month, and the following regulation is rigidly enforced: All students who fail to settle obligations to the university by the tenth of the month and whose names appear on the delinquent list will be dropped from classes and will be required to withdraw if settlement is not made by the close of business on the fifteenth of the month. Delinquent fee of one dollar is assessed if the obligations to the university are not paid by the tenth of the month.

Payments to the Fiscal Department should be made by Cashier's Check or Money Order, payable to Prairie View University. All checks and money orders are accepted subject to final payment. The institution assumes no responsibility for remittance made by parents to students.

EXPENSES FOR NURSES*

First Year

ENTRANCE FEE	\$132.00
Payable July 2, 1945—Tuition	\$16.67
Activity Fee	5.00
Books and Classroom Supplies	27.00
Deposit for Uniforms & Supplies ..	30.00
78.67	
Payable October 1, 1945—Tuition	16.67
Payable January 1, 1946—Tuition	16.66
Payable April 1, 1946—Tuition	20.00
TOTAL	\$132.00

Second Year

ENTRANCE FEE	\$120.00
Payable July 1, 1946—Tuition	\$16.67
Activity Fee	5.00
Books and Classroom Supplies	15.00
Deposit for Uniforms & Supplies ..	30.00
	66.67
Payable October 1, 1946—Tuition	16.67
Payable January 1, 1947—Tuition	16.66
Payable April 1, 1947—Tuition	20.00
TOTAL	\$120.00

Third Year

ENTRANCE FEE	\$100.00
Payable July 1, 1947—Room Rent	\$19.80§
Payable October 1, 1947—Room Rent	19.80§
Payable January 1, 1948—Room Rent	19.80§
Balance will cover the cost of uniforms, activity fee, incidentals	40.60
TOTAL	\$100.00

NOTE: The following articles are to be brought by student nurses enrolling as freshmen:

1. Four sheets.
2. Four pillow cases.
3. Two bed spreads.
4. Curtains for two windows.
5. Dresser and table scarf.
6. One bedside rug.
7. Shower cap, shower shoes, face and bath towels.
8. Black low rubber-heel arch supported oxfords.
9. Two pairs of black service weight hose.
10. Raincoat.
11. Umbrella.
12. Fountain Penn.
13. Watch with second hand (Inexpensive make).
14. Three plain navy blue dresses.
15. Six plain nurse's aprons without bibs.

*A UNIT OF THE UNITED STATES CADET NURSE CORPS was established at Prairie View beginning July 1, 1944. For full particulars on fees and expenses in this program please address the Registrar.

§Nurses on affiliation will be required to pay \$6.60 per month, room rent fee, for three quarters if the hospital with which nurse is affiliated does not furnish same.

MUSIC FEES

Piano or voice, two lessons a week, including the use of piano for practice, \$3.00 a month.

Students who are music majors or minors and are registered in piano, voice or other instruments (excluding organ) will pay \$12.00 a semester, in advance.

A fee of \$3.00 a month is charged for non-music majors taking voice, piano or other instrumental music, payable in advance at the beginning of each month.

A fee of \$5.00 a month is charged for organ lessons, payable in advance.

The above fees include use of instruments for practice.

ACTIVITY FEE

At the request of the student body the classes voted an optional fee of \$5.00 each regular session for the support of student activities, to be paid along with other fees at registration.

The activities covered by the fee are subscription to "The Panther" (student publication), membership in the Y. M. C. A. or Y. W. C. A., admission to campus athletic contests, debating contests, dramatics, activities, and provision of orchestral music for approved entertainments.

COMMERCIAL STUDIES**FEE—PAYABLE IN ADVANCE**

A fee of one dollar a month is charged for shorthand or typewriting. A fee of \$1.75 a month is charged for both when they are taken at the same time. A fee of \$4.50 per semester is charged those taking typing or shorthand; for those taking typing and shorthand, the fee is \$8.00 per semester.

KEY DEPOSIT REFUND

Key deposits will be refunded if the student returns his key to the Fiscal Office within three days after the close of the period for which fees have been paid. If a student withdraws from school, his room key must be returned to the Fiscal Office within three days after date or withdrawal for any cause.

DIPLOMA AND TRADE CERTIFICATE FEES

1. College Diploma \$5.00 (Optional)
2. Graduate Nursing Diploma \$7.50 (Optional)
3. Trade Certificate \$2.00 (Optional)
4. Graduate School Diploma and Graduation fee \$10.00

DEDUCTIONS AND REFUNDS

During the long session any student withdrawing officially from the institution will receive the following fractional refunds of the matriculation fee: (1) during the first week of class work in a semester, four-fifths of the fees; (2) during the second week, three-fifths of the fee, (3) during the third week, two-fifths of the fee; (4) during the fourth week, one-fifth of the fee. After the fourth week no part of the matriculation fee will be refunded.

The starting point for determining fractional refunds is the date set for matriculation for a given semester.

Academic Information

ADMISSION

GENERAL ADMISSION REQUIREMENTS

All communications in regard to admission to the college should be addressed to the Registrar, Prairie View University, Prairie View, Texas.

All applicants for admission to the college must be of good moral character and must pass a satisfactory physical examination administered by the school physician.

Applicants for admission to the Division of Nursing Education must be at least 18 years of age and not over 30 years of age.

ADMISSION BY CERTIFICATE

Applicants who present complete certified transcripts showing graduation from accredited four-year high schools with a minimum of fifteen units of work will be admitted without examination.

A unit is the equivalent of one high school study satisfactorily pursued during one school year, thirty-six weeks in length, on the basis of five forty-five minute recitations a week. In laboratory courses three recitation periods and two double periods of laboratory work per week constitute a unit.

Of the units acceptable for admission from high school, eight are required while seven are elective. The following represents the distribution of required units:

English	3 units
Algebra	1 unit
Plane Geometry	1 unit
History and Civics	2 units
Natural Science (with laboratory)	1 unit

For a admission to the Division of Nursing Education, nine units are required as follows:

English	3 units
Mathematics	2 units
History	2 units
Natural Science (with laboratory)	2 units

The seven elective units may be earned in any subject or subjects accredited by the Department of Education of the state in which the high school is located, provided that the total number of required and elective units together in any one subject shall not exceed four units. Records submitted by applicants for entrance into the Division of Nursing Education must be approved by the State Board of Nurse Examiners before such applicants may be accepted into the Division as preliminary students.

All credit for admission must be filed and classified in the Registrar's Office before the student may attain academic status of any kind. Transcripts should be on file in the Registrar's Office at least one month before the registration date of the semester in which the applicant plans to register. At the request of the applicant, a blank form for this purpose will be sent by the Registrar for the principal of the high school from which the applicant was graduated.

All entering students are required to take a placement test in English grammar and may be required to take a psychological test.

Students entering to major in applied music (piano, voice, and violin) should show evidence of satisfactory elementary training and technique. Those who do not meet entrance requirements in applied music will study without credit until work and development are acceptable.

ADMISSION BY EXAMINATION

Any or all of the unit requirements for admission may be met by passing entrance examinations.

Spring entrance examinations are held throughout the state in May under supervision of the State Department of Education, mainly for the convenience of students in non-accredited high schools who wish to satisfy college entrance requirements.

Fall entrance examinations will be given at Prairie View University, September 10 and 11, 1945, for graduates of four-year non-accredited high schools who wish to qualify for admission.

Entrance examinations will be administered between May and September at home, upon approval of such arrangements by the Principal, Prairie View University, Prairie View, Texas. These arrangements should be made through the principal or the superintendent of the high school from which the applicant was graduated.

ADMISSION TO ADVANCED STANDING

A student transferring from another college will be admitted to advanced standing in this university upon presentation of an official transcript of all work completed at the other institution.

Work completed at institutions which maintain standards of admission and graduation similar to those of this college will be given equivalent credit so far as it applies on courses offered in this college. All transfer students must meet residence requirements of the college.

Final acceptance of all transfer credit will depend upon the maintenance of satisfactory standing by the student during the first semester of his attendance.

Students applying for advanced standing in music courses that lead to a degree must show evidence of satisfactory completion of courses equivalent to those outlined in the music curriculum of the college and must pass acceptably an examination in applied music. Standing in music courses will be determined in consultation with the head of the Music Department.

ADMISSION BY INDIVIDUAL APPROVAL

Applicants for admission who are over 21 years of age may be admitted to college courses without examination. Such person must show evidence that they have substantially the work represented by the number of admission units required of other applicants and have sufficient ability and seriousness of purpose to do the work desired with profit to themselves and satisfaction to the college. Inability or failure to do the work shall be sufficient cause for withdrawal of such classification.

Students thus admitted may not receive credit toward a certificate or a degree until the eight required and seven elective admission units are absolved. These units may be absolved as follows: Upon completion of Freshman English three admission units are granted; two units in mathematics are granted upon completion of Freshman mathematics; two units in history and civics are granted upon completion of Freshman social science; one unit in science is granted for completion of Freshman science. Any or all of these admission units may be absolved by examination. The remaining seven elective admission units may be granted upon completion of 30 semester hours of college work provided the average is no lower than "C".

ADMISSION AS IRREGULAR STUDENT

Applicants at least 16 years of age who have completed scholastic training equivalent to completion of the elementary grades may be permitted to restrict their studies to special courses upon petition to the Registration Committee and the Director of the Division in which the work is to be pursued. Such permission is usually confined to those desiring to enroll in trade courses.

ORDER OF REGISTRATION

Students must report to:

1. The Treasurer's Office for payment of fees. Fees must be paid before any part of registration can be continued.

Note: Students not planning to board in the dining-hall and lodge in the dormitory must get special signed permits from the Principal before going to the Treasurer's Office.

2. The Personnel Director or Dean of Women for permanent room assignment.
3. The hospital for physical examination. Every student must pass a satisfactory physical examination before final admission.

4. The proper person for inspection of uniforms.

Note: Women must report to the Director of Home Economics for uniform inspection.

5. The registration hall for assignment of courses.

6. Registration is not completed until all registration forms are completed and turned in to the Registrar. If registration is not completed on registration day, a late fee of one dollar per day is charged, accumulative to five dollars, after which students may not register.

Every woman is expected to own a navy blue skirt, at least four washable blouses, and a small dark hat. A navy blue coat suit is very desirable. Sensible walking shoes, umbrella, raincoat, galoshes or boots, and a heavy serviceable coat are needed. It is suggested that these uniform articles be purchased at home.

Note: Men must report to the Personnel Director for uniform inspection and show receipt for \$10.00 deposit for R. O. T. C. manual and supplementary uniform equipment. Men will be checked for the following:

Uniform—One pair of regulation trousers, two regulation ties, four regulation shirts, one regulation belt, one regulation cap, one pair of brown shoes. (All of these items except the shoes are furnished by the R. O. T. C. at this university.)

Room Accessories—Four sheets and three pillow cases. In addition to sheets and pillow cases, it is suggested that the following articles be brought to school; one table scarf; one inexpensive rug; two inexpensive bed spreads; one pair of curtains.

SCHOLASTIC REGULATIONS

UNIT OF CREDIT

The unit of credit at Prairie View University is the semester hour. A semester hour represents the equivalent of one recitation or lecture hour per week, for eighteen (18) weeks. Two laboratory, practice, or demonstration hours represented the equivalent of one recitation or lecture hour per week, for eighteen (18) weeks, except that in the Mechanic Arts Division and Military Science three practice or laboratory hours are required to equal one lecture or recitation hour.

EXPLANATION OF COURSE NUMBERS

The first digit reading from the left indicates the level on which a course is offered, as freshman—1, sophomore—2, junior—3, senior—4. The second digit indicates that semester in which a course is offered. Odd numbers indicate first semester; even numbers, except zero, indicate second semester; zero indicates either semester. The third digit specifies the semester hour of credit a course carries.

Numbers in parentheses indicate the clock hours per week spent in lecture and laboratory respectively. Roman numerals I and II indicate first and second semesters respectively.

Example: CHEMISTRY 114, (2-4) I. This means that the course is on the freshman level, and is offered the first semester, carries four semester hours of credit, and requires two clock hours for lecture and four clock hours for laboratory period, and is offered the first semester.

CLASSIFICATION

Students who have credit for twenty-four semester hours are classified as sophomores; those having fifty-four semester hours are classified as juniors and those having ninety-four semester hours are classified as seniors.

CLASS ATTENDANCE

Regular and punctual attendance at classes is required. Any student accumulating ten or more unauthorized absences from a course

which meets three times per week shall receive no credit for the course. Any student accumulating four or more unauthorized absences from a course which meets once a week shall receive no credit for the course.

Any student who is absent from class must present an approved admission from the Director of Personnel or the Dean of Women before he or she is admitted to class again. Absences due to late registration count as though the student registered at the beginning of the term.

Persistent absence from class (including required physical education and military science) shall be sufficient cause for dropping a student from the rolls of the college.

CHANGE OF PROGRAM

After completing the initial procedures of registration for the session, a student may add or drop a course only with the approval of the director of the division. No course may be added after the tenth working day of any semester. The total number of hours must not become fewer than twelve. A student who drops a course after the first ten days of either semester for any cause other than withdrawal from the college is given, at the discretion of the director, a grade of "F" in the course for the semester. To drop a course unofficially (and persistent absence from class amounts to dropping) means to sever one's connection with the college.

EXTRA LOADS

Any credit course taken in addition to a program of 17 semester hours constitutes an extra load. To carry an extra load the student must obtain written permission from the Classification Committee. Permission to carry an extra load shall be granted to students maintaining a scholastic average of "B" or above during the last previous semester or term in residence.

SYMBOLS OF GRADING

The grading symbols are: A (95-100); B (85-94); C (75-84); D (65-74); E (60-64); F (below 60); I—Incomplete. A grade of "I" means that some relatively small part of the session's work remains undone because of illness or other unavoidable reasons. Grades of "I" may become passing upon completion of the work prescribed by the instructor. (See section on Deficiency Examinations).

"F" is a failing grade. Credit for a course in which the grade of "F" is given can be secured only by repeating the course.

INCOMPLETE CLASS WORK

A student who is compelled to delay beyond the end of the semester the completion of the class work of the semester for illness or other imperative causes, should, in person, or through a friend, petition the director of the division in which he or she is registered—beforehand if possible—for permission to delay the work. If permission is granted, the work may be finished within a year and credit for it given at the discretion of the instructor. A student whose work is reported incomplete without the director's permission is given a failing grade.

The student must make application to the Registrar for a permit to remove a grade of "I".

GRADE POINTS

For a grade of "A" in any subject, three times as many points will be given as there are credit hours in the course; for grade of "B", twice as many points; and for a grade of "C", the same number of points. No other grades yield grade points. Grade points are required for graduation in the ratio of one grade point for each semester hour counted toward graduation.

HONOR ROLL

The university honor roll is published at the end of each semester of the regular session. To qualify for the honor roll a student must have 12 hours and an average of "B" and no grade below "C" in any course.

FAILING TO PASS

Any student who, at the mid-semester report, fails to make a passing grade in 50 per cent of the hours in major courses for which he is registered, will be placed on probation; if at the end of the semester the student still fails to pass in 50 per cent of the hours in major courses for which he is registered, at the discretion of the Principal, he shall be dropped from the institution for at least one semester.

GRADE REPORTS FROM THE REGISTRAR

Grade reports are sent to parents or guardians at the end of each semester.

The parents or guardians of all students doing work below passing grade are notified of this condition shortly after the results of the mid-semester tests have been reported to the Registrar's Office.

EXAMINATIONS AND TESTS**SEMESTER EXAMINATIONS**

Examinations in all college courses are given at the end of the first and second semesters. Exceptions from examinations will not be granted. In all examinations, account is taken of English usage.

MID-SEMESTER TESTS

Mid-semester tests in all college courses are given at the end of the first nine-week period of each semester.

ABSENCE FROM EXAMINATION

A student who is compelled to be absent from a semester examination for sickness or other imperative cause, should petition his director—beforehand if possible—for permission to postpone the examination. This permission must be presented in writing to the teacher who is to give the examination and submitted by the teacher with the grade to the Registrar's Office.

A student absent from a semester examination without the director's permission is graded "F" and required to repeat the semester's work.

DEFICIENCY EXAMINATIONS

An examination to remove a course condition grade of "E" may be taken on one of the days designated for this purpose or during any regular examination period within twelve months after the grade was received. If examination is satisfactory, the final grade then becomes "D". A student who fails to pass a deficiency examination in a course forfeits thereby the right to ask for another examination in the course and must repeat the work.

The student must make application to the Registrar's Office for a deficiency examination.

MEN CALLED TO THE ARMED SERVICES**RE: ACADEMIC CREDIT**

Seniors who are in their last semester and are taking all the work for graduation are allowed their credits at the time they are called, provided it is past mid-semester, nine weeks.

Other students are allowed their grades up to the time of leaving, if they are called as follows:

- a. If two weeks after mid-semester, their "A" and "B" grades, eleven weeks.
- b. If after January 1 or May 1, their "A", "B", and "C" grades.
- c. "D" grades are allowed only when semester is completed.

In each case the student is expected to stay in college as long as possible before he goes to enter the Army. This is considered to be one week before his actual date of reporting.

A student who leaves earlier than the dates indicated above may be granted permission to take up his studies at a corresponding time in a later semester if he can come back. If he is out a considerable length of time, he should return earlier in order that the first part of the semester's work should be fresh in his mind when he comes to the latter part.

DEGREES, DIPLOMAS, AND CERTIFICATES**APPLYING FOR GRADUATION**

Any student expecting to graduate at the end of a regular long session is required to apply by letter for the degree, diploma, or trade certificate expected, during the first five days of the first semester of his attendance in that session. If graduation is expected at the end of the summer session, the application for degree, diploma, or trade certificate should be made by letter during the first three days of the first term of the student's attendance in that summer session.

The letter of application should be directed to the Registrar.

DEGREES AND DIPLOMAS OFFERED

1. From the Division of Agriculture, Bachelor of Science.
2. From the Division of Arts and Sciences, Bachelor of Arts, Bachelor of Music, Bachelor of Science, and Bachelor of Science in Education.

3. From the Division of Home Economics, Bachelor of Science.
4. From the Division of Nursing Education, Graduate Nurse Diploma and Bachelor of Science.
5. From the Division of Mechanic Arts, Bachelor of Science.
6. From the Division of Graduate Study, Master of Science.

No degree will be conferred except publicly on Commencement Days. Every candidate must attend in person the Commencement at which his degree is to be conferred. If he must be absent for a good cause, he must petition the Principal at least one week in advance.

REQUIREMENTS FOR DEGREES AND DIPLOMAS

Semester Hour and Grade Point Requirement. To qualify for any degree a student must not only present at least 120 semester hours and 120 grade points, but must also satisfy the specific requirements listed for the division in which he is enrolled. One grade point for each semester hour presented for graduation is required of all candidates for degrees. Transfer students may not present grade points in excess of hours.

Special Requirements in Major Subject. Of the courses offered for an undergraduate degree at least six semester hours in advanced courses in both the major subject and minor subject must be completed in residence.

Extension Limitation. Of the courses offered for an undergraduate degree, not more than sixty semester hours in correspondence and extension will be accepted.

Residence Requirement. No degree will be conferred without campus residence equivalent to two semesters comprising thirty-six weeks or three summer sessions comprising thirty weeks, and the completion in residence of at least thirty semester hours of work counting toward graduation, provided also that the last 30 semester hours of work have been completed in continuous residence.

Six Hours in Government Required. The Forty-fifth Legislature passed the following law:—"Provided further, that after September 1, 1937, no student shall be certified for graduation from any tax-supported State educational institution with the award of a college degree unless such student shall have completed theretofore in a standard college or university at least six (6) hours for credit in the governments of the State of Texas or of the United States of America, or the equivalent in both or shall have completed at least three (3) hours of said credit in government and at least three (3) hours of credit in a course in Military Science as provided in an approval Senior R. O. T. C. unit.

English Usage and Arithmetic Requirements. All seniors must pass a standard test in English grammar and a special test in arithmetic before they will be approved for graduation. Drill classes are open to those who fail to pass the tests.

Off-Campus Practice Teaching Requirement. Students in all divisions shall be required to take practice teaching off the campus before they may be recommended for graduation.

Essay Requirement. Every candidate for the bachelor's degree must write a report or an essay on some practical topic or project in his field of concentration. The report or essay must be typewritten, double-spaced on plain white bond paper, and must be approved by the advisor under whose supervision it has been written and the Head of the Department. Two copies, original and first carbon, must be filed in the Director's office not later than May first of the academic year in which the degree is to be conferred. Candidates for the degree at the Summer School Commencement must file their reports or essay before August first.

Skills Requirement. Candidates for graduation from the divisions of Agriculture, Home Economics, and Mechanic Arts are required to complete special skills courses in these respective fields before they may be approved for graduation.

Graduation Honors Requirement. Students earning a minimum ratio of two grade points for each semester hour are graduated "With Distinction." Students earning a minimum ratio of 2.5 grade points for each semester hour are graduated "With Great Distinction." No student who has made a grade below "D" shall be eligible to consideration for honors regardless of his grade point ratio.

Second Baccalaureate Degree Requirement. No second bachelor's degree will be conferred until the candidate has completed at least thirty semester hours in addition to those counted toward the first Bachelor's degree. Two-thirds of the credit subsequent to the first undergraduate degree required for presentation on the second undergraduate degree must be done in residence at Prairie View University. It is provided further that the last actual credit presented in the second undergraduate degree must be done in residence of Prairie View University.

REQUIREMENTS FOR TRADE CERTIFICATES

Trade certificates are awarded for completion of special trade courses as follows: Automotive Science, Brick masonry, Broom and Mattress making, Carpentry and Cabinet Making, Electrical Repair Shop, Laundering and Dry Cleaning, Machine Shop Estimating, Plumbing and Steam-Fitting, Printing, Shoemaking, Stationary Engineering, Tailoring, Shorthand, Typing, Beauty Culture, Dressmaking, Cooking, Painting and Interior Decorating.

NOTE: Persons who have satisfied the original thesis requirements will not be held responsible for the essay requirements described above.

REQUIREMENTS FOR TEACHING CERTIFICATE

All teaching certificates are issued by the State Department of Education and signed by the State Superintendent of Public Instruction. Special requirements for the elementary permanent certificate are listed below.

Course	SEMESTER HOURS (Minimum)
ENGLISH—Composition and Rhetoric.....	6
EDUCATION—Principles of Elem. Education.....	3
EDUCATION—Introduction to Education.....	3
BIOLOGY.....	8
MATHEMATICS—Math. Analysis.....	6
ART.....	4
PHYSICAL ED.—Prac. & Meth. for Elem. Grades.....	4
ENGLISH—English.....	6
EDUCATION—Materials and Methods.....	3
EDUCATION—Rural Education.....	3
EDUCATION—Elementary Practice Teaching.....	3
EDUCATION—School Hygiene.....	3
MUSIC—Public School Music.....	3
GEOGRAPHY—Human Geography.....	3
HISTORY—Constitutional History.....	3

Information regarding other teaching certificates may be obtained from the Registrar or from the State Board of Examiners, Austin, Texas.

¹DIVISIONS OF STUDY

Division of Agriculture

The Division of Agriculture offers two four-year curricula leading to the degree of Bachelor of Science in Agriculture. The entrance requirements for these curricula are the same as for the other divisions of the college. The work in this division centers around instruction and practice in Agricultural Education, Agronomy, Animal Husbandry, Dairying, Horticulture, Rural Economics, Rural Engineering, Rural Health, Rural Sociology, Special Agricultural Science, and Veterinary Science. In addition to subjects purely agricultural, the student is given instruction in professional and vocational subjects and the sciences closely related to agriculture.

Divisional Requirements for Graduation

For the degree of Bachelor of Science in Agriculture one hundred and forty (140) semester hours of work must be completed as outlined in the course of study for the division.

¹This edition of the catalogue is a supplement to the Sixty-Fifth Edition; consequently, the detailed curricula are left out. Consult the Sixty-Fifth Edition in order to find them.

Division of Arts and Sciences

The Division of Arts and Sciences offers courses in Biology, Business Administration, Mathematics, Economics, Education, English, History, Music, Physical Education, Physics, Chemistry, Philosophy, Political Science, Sociology and Social Science, and Modern Foreign Languages.

The first two years' work affords the student an opportunity to survey some of the general fields of the natural and social sciences, language and literature, and to perfect the tools required in more advanced studies. During the last two years of college work, a considerable degree of concentration in a major field is required, although ample opportunity is given for cultivating related interests or pursuing studies which do not fall within the field of the student's major.

All freshman students are required to register for Orientation (Educ. 103) during their first term in college.

Every student in the Division of Arts and Sciences is required to spend six supervised clock hours per week throughout each year of residence in the long session, or the equivalent thereof in some form of vocational training not counted toward graduation in any course of study. This requirement is commonly referred to as "Industry".

Physical Education practice is required of all women students two hours per week throughout the freshman and sophomore years.

Unless specifically excused by the Principal, each student is expected to meet the twenty-four hour education requirement for teacher certification.

All freshman and sophomore students of the Division of Arts and Sciences, unless specifically excused by the Registrar before registration or the Director of the Arts and Science Division after registration, are required to follow the prescribed courses as set forth in the catalogue. The various departments will hold to the work and sequence as outlined herein.

DIVISIONAL REQUIREMENTS FOR GRADUATION

The following general requirement must be met by all persons desiring degrees of any type from the Arts and Sciences Division.

Courses	Semester Hours
ENGLISH	12
FOREIGN LANGUAGE.....	12
SOCIAL SCIENCE.....	6
NATURAL SCIENCE.....	6
MATHEMATICS.....	6
PHYSICAL EDUCATION (excluding Practice Courses).....	6
AMERICAN GOVERNMENT.....	6
NEGRO HISTORY.....	3
*RURAL STUDIES.....	3
INDUSTRY.....	7

Note: Persons attending Extension Centers or Summer Sessions will be required to present four hours in required subjects as an equivalent to three semester hours earned during the regular session.

*Rural Education or Sociology 233.

MAJOR AND MINOR REQUIREMENTS

After the completion of the sophomore year every student in the Division who has not already done so must select, with the advice and consent of the Department Head concerned, a department as a major field or a major. In addition to selecting a major field or a major every student must also select another department or other departments for minor fields of concentration and specialization. This is commonly referred to as choosing a minor or minors. Every candidate for graduation from the Arts and Sciences Division must satisfactorily complete a major and a minor before his graduation will be recommended.

At least six hours of the last 12 required for the completion of the major and minor must be done in residence. Course may be specified by the department concerned.

DEGREES

BACHELOR OF ARTS. The degree of Bachelor of Arts will be conferred upon candidates who satisfy all the general requirements for graduation and satisfactorily complete their work in English, The Social Sciences, or Music.

BACHELOR OF MUSIC. The degree of Bachelor of Music will be conferred upon candidates who satisfy all of the general requirements for graduation and complete not less than 75 semester hours in Music.

BACHELOR OF SCIENCE. The degree of Bachelor of Science will be conferred upon all candidates who satisfy the general requirements for graduation and satisfactorily complete their major work in Mathematics, Natural Science, or Physical Education.

BACHELOR OF SCIENCE IN EDUCATION. The degree of Bachelor of Science in Education will be conferred upon candidates who satisfy all the general requirements for graduation and satisfactorily complete their major work in Education.

NOTE: Persons selecting Secondary Education as a major field of concentration will be required to complete a second major in some field other than Education. The type of degree to be awarded any person presenting two majors will be determined from his second major.

GENERAL CURRICULUM IN ARTS AND SCIENCES DIVISION

FIRST YEAR

First Semester		Second Semester	
Orientation	3	English	3
English	3	Mathematics	3
Mathematics	3	Intro. to Education	3
Social Science	3	Natural Science	3
Natural Science	3	Psychology or Elective	3
Military Science (Men)	1	Military Science (Men)	1
Physical Education (Women)		Physical Education (Women)	

SECOND YEAR

First Semester		Second Semester	
	Hrs.		Hrs.
Foreign Language	3	Foreign Language	3
Rural Studies	3	Education	3
National Government	3	Electives	6
Electives	6	State Government	3
Military Science (Men)	1	Military Science (Men)	1
Physical Education (Women)		Physical Education (Women)	

THIRD YEAR

Foreign Language	3	Foreign Language	3
English	3	English	3
Physical Education (Theory)	3	Physical Education (Theory)	3
Electives	6	Electives	6

FOURTH YEAR

Negro History	3	Electives	15
Education (Including Apprentice Work)	12		

THE DEPARTMENT OF ECONOMICS AND BUSINESS ADMINISTRATION

The Department of Economics and Business Administration offers (1) A combination major or minor in Economics, Business and Commercial Education; and (2) A two-year course in Secretarial Training.

The major in Economics and Business Education consists of twenty-seven hours of work including Principles of Economics, Economic History, Economic Theory and Statistics. A minor consists of eighteen hours. In either case, the student should work out his or her program with the Head of the Department so that the prerequisites and sequences will be observed.

Certain skills must be acquired and ample opportunity for testing them will be provided in various offices of the school and in achievement or performance tests. In other words, all candidates for a degree or certificate must spend a period of internship in some business or office, or when teaching certification is desired, the usual off-campus apprentice requirement in Education must be met.

Department of Education

Major Requirements

For a major in Education, 30 semester hours of work are required, of which 12 must be in courses numbered above 300 if the major is in elementary education and 15 hours above 300 if the major is in secondary education.

Students wishing to prepare themselves for teaching in the elementary school should select the elementary field for emphasis.

Students wishing to prepare themselves for teaching in the secondary school should select the secondary field for emphasis.

Preparation for teaching in one or more of the usual high school fields, (commercial work, English, history and social studies, mathematics, natural sciences) is a necessary part of the program for students who take a major in secondary education. Hence, the student must have a major outside of the field of education and it is advisable to have a minor which may be used as a second teaching subject. Experience has shown that many students who prepare to teach in the high school are employed in the elementary school; therefore, every student is advised to take Education 233.

Students who desire elementary certificates should include in their work Music 173 and 183, Nature Study, and Geography 203.

Each student is required to have Practice Teaching. While in this course, the student spends at least eight weeks in the campus training school and a minimum of eight weeks in a school off the campus.

Department of English

Major Requirements

For a major thirty semester hours in addition to English 463, the teaching of English, which is counted as Education, and two hours of Art are necessary. Courses are prescribed as follows:

English 113, 123	Composition	6 hours
English 283	Major Problems	3 hours
English 313	Public Discussion	3 hours
English 323	Victorian Literature	3 hours
English 363	American Literature	3 hours
English 353	The English Language	3 hours
English 333	Romantic Movement	3 hours
	or	
English 412, 422	The Novel	3 hours
English 433	Shakespeare	3 hours
	or	
English 443	The Drama	3 hours
English 303	Advanced and Technical Writing	3 hours
Total		30 hours

Minor Requirements

For a minor in English twenty-one semester hours in addition to English 463, The Teaching of English, which is counted as Education are necessary. Courses are prescribed as follows:

English 113, 123	Composition	3 hours
English 283	Major Problems	3 hours
English 313	Public Discussion	3 hours
English 353	The English Language	3 hours
English 363	American Literature	3 hours
English 303	Advanced and Technical Writing	3 hours
Total		21 hours

Each student in the Department will be expected to own a copy of Webster's Collegiate Dictionary, Fifth edition, published by the G & C Merriam Company, a handbook of English usage, and an Authorized Version of the Bible.

Department of History

Political Science and Philosophy History

Students majoring in History are required to present thirty hours in the course offerings as listed on the following pages. The total offering is designed to take the student into most of the phases of modern historical development. The student should arrange to begin History 402 at the beginning of the Senior Year. Majors in History should arrange to complete the allied Social Science requirements listed below. Students minoring in History must present eighteen hours in selected course offerings in consultation with the advisor of the Department.

Majors in the combined fields of History and Government must present thirty hours in the offerings from the two fields as herein indicated, the exact nature of courses to be presented for a major to be determined by the Department. Courses from allied Social Science fields are to be presented in consultation with the departmental adviser.

PHILOSOPHY

Students desiring to minor in the field must present seventeen (17) hours, excluding Philosophy 113, and six (6) hours in some other Social Science.

POLITICAL SCIENCE

Social Science majors concentrating in Political Science are required to take at least 30 hours of Political Science. Course 3X3 is required of all Political Science minors, or a Methods Course in History may be substituted, History 362. Political Science majors must also take at least one one-semester course in four of these six fields: American Government, Foreign Government, Political Parties, Methodology and Theory, Public Administration, and International Law and Relations. Students who are eligible and desire to concentrate in Political Science should consult with the Chairman of the Department.

in addition to
the following

the following
the following

the following
the following

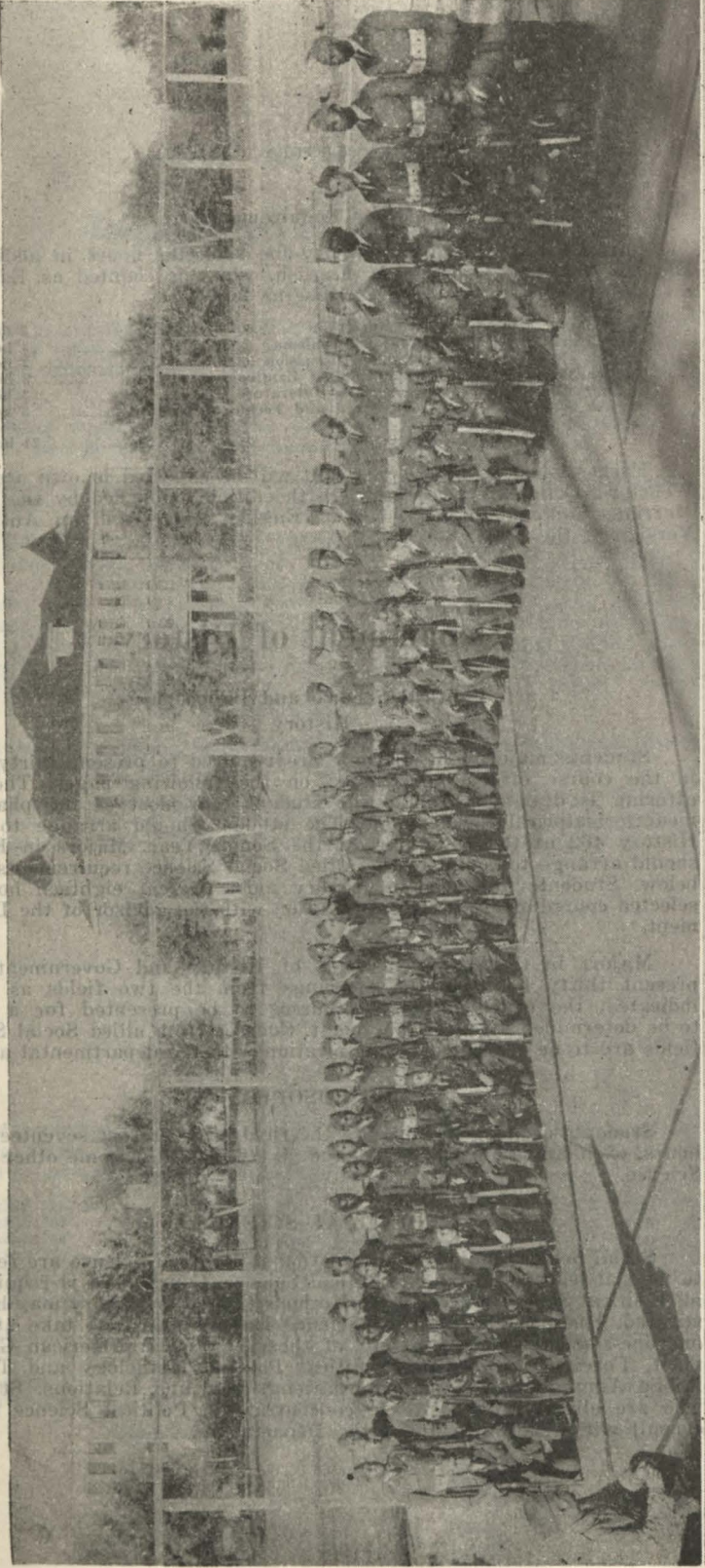
the following
the following

the following
the following

the following
the following

the following
the following

the following
the following

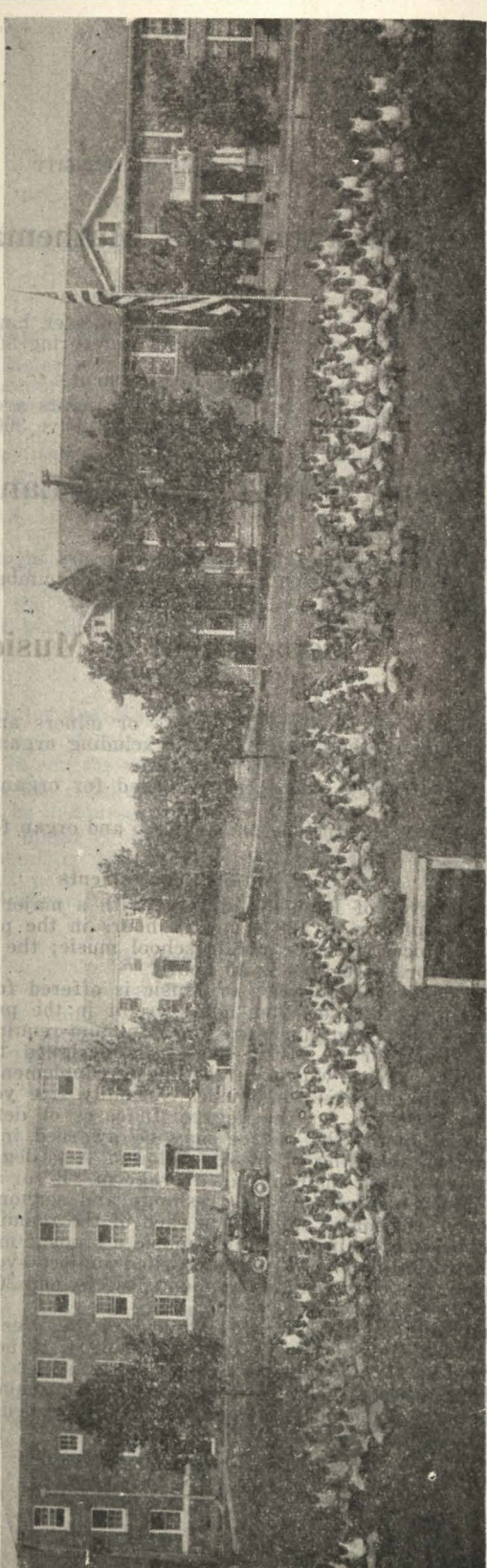
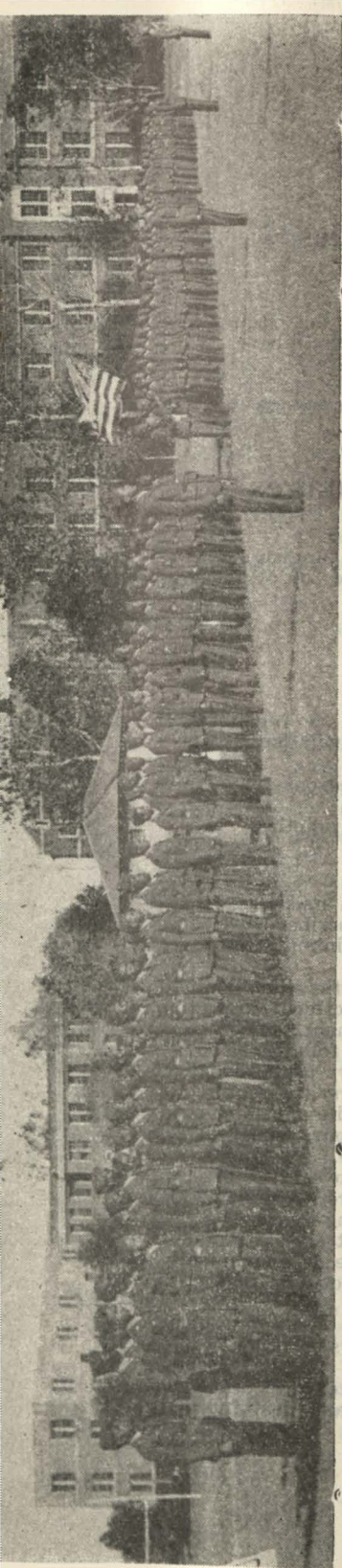


the following
the following

the following
the following

the following
the following

the following
the following



of the
by the
T
subje
hours
T
of 30
or ad
of the
St
the pr
and s
compl
major
T
of wh
a min
T
quint
or pi
for th
T
advan
sees
voices
St
FEEB

Department of Mathematics

Major Requirements

For a major in mathematics, 27 semester hours are required, at least nine of which must be in courses numbering 300 and above.

Minor Requirements

For a minor in mathematics eighteen hours are necessary, at least six of which must be in courses numbered above 300.

Department of Modern Languages

No major offered.

For a minor in language, eighteen hours in one language are required, six hours of which must be in courses numbered 300 or above.

Department of Music

FEES:

Students who are music majors or minors and are registered in voice, piano or other instruments (excluding organ) will pay \$12.00 a semester, in advance.

A fee of \$5.00 a month is charged for organ lessons, payable in advance.

The above fees include use of piano and organ for practice.

Major Requirements

The degree of Bachelor of Arts with a major in music is offered for the completion of 128 semester hours in the prescribed curriculum or piano, voice, violin or public school music; the minimum music requirement for the degree is 50 hours.

The degree of Bachelor of Music is offered for the completion or a minimum of 128 semester hours credit in the prescribed curriculum, of which 75 hours in music are the minimum requirement.

The Bachelor of Music degree is designed to follow the music major baccalaureate with a curriculum of supplementary professionalized and specialized courses in music. Normally five years are required to complete the work for the degree. In cases of definite music purpose and special merit, the degree may be awarded in four years without the previous awarding of the Bachelor of Arts degree.

Students must maintain an average of "B" or above in 50 per cent of the Music subjects in the freshman and sophomore years, and "B" or above in the major subjects in each of the remaining years.

In the curriculum of applied music a student must earn a minimum of 30 hours in his chosen major applied subject—voice or instrument—, 15 hours in his chosen minor applied subjects, and 30 hours in theoretical subjects.

The public school music curriculum requires a minimum of 12 hours in one applied subject (piano included), 12 hours in other applied subjects and 45 hours in theoretical subjects.

The courses to be taken and their proper sequence will be outlined by the head of the department to meet the needs and best interests of the student.

Department of Natural Science

BIOLOGY

Major and Minor Requirements

For a major in Biology, 32 semester hours are required, of which at least 16 must be in courses numbered 300 and above. Of the 32 hours, the following courses must be included: Biology 134, 214, 224, 314, 324, 344, and 414.

Twenty hours are necessary for a minor in Biology of which at least 8 must be in courses numbered 300 and above. In addition to the above requirements, the following courses must be presented by major and minor students: Chemistry 114, 124; Physics 114, 124; Mathematics 113, 123 or 173, 183.

All majors must maintain an average not less than C and show a definite interest in Biology. If a student has less than a C average in his science course at the beginning of his junior year, it will be suggested that he change his field of concentration.

CHEMISTRY

Major and Minor Requirements

For a B.S. degree in Chemistry, 34 semester hours are required of which 16 must be in courses numbered 300 and above.

Twenty-one hours are required for a minor in Chemistry, of which at least 5 hours must be in courses numbered 300.

All students who major or minor in Chemistry must include the following courses: Chemistry 114, 124, 204, 214, and 315. In addition to the above courses, all persons majoring in Chemistry must take the following courses: Mathematics 113, 123, 213, and 233, and Physics 114 and 124.

PHYSICS

Twenty-four hours are necessary for a minor in Physics.

In addition to the above requirements for a major or minor in Physics, the following courses must be presented: Chemistry 114, 124 and Mathematics 113, 123, 213 and 223.

Department of Physical Education

Major and Minor Requirements

Thirty-two semester hours of work in Physical Education theory are required for a major, and twenty-two semester hours for a minor in physical education, in addition to the practice courses required.

Students' seeking a major in Physical Education should follow the outlined program for Physical Education theory courses.

Principles of Physical Education	3 hours
Methods of Health and Physical Education	6 hours
Coaching Team Sports	6 hours
Organization and Administration	3 hours

Human Anatomy and Physiology	8 hours
Hygiene	3 hours
Elective	3 hours

Students seeking a minor in Physical Education should follow the outlined program for physical education theory courses.

Principles of Physical Education	3 hours
Methods and Material of Health and Phys. Educ.	6 hours
Coaching and Team Sports	6 hours
Electives	6 hours

Twenty hours are necessary for a minor in Biology of which at least 8 must be in courses numbered 300 and above. In addition to the above requirements, the following courses must be presented by major and minor students: Chemistry I-4; Physics I-4; Mathematics I-3, I-2 or I-1, I-2, I-3, I-4.

Department of Sociology, Social Science and Research

FOUR-YEAR PROGRAM

MAJOR IN SOCIOLOGY AND MINOR IN COGNATE

Note: All students majoring in the Department of Sociology are expected to complete twenty-one hours in sociology together with eighteen hours distributed over the following courses:

Philosophy	3 hours
Economics	6 hours
History	6 hours (European or American)
Geography	3 hours

All students minoring in the Department of Sociology are expected to complete twelve hours. These requirements are in addition to the general requirements of the School of Arts and Sciences.

In addition to the above requirements for a major or minor in Sociology, the following courses must be presented: Chemistry I-4 and Mathematics I-3, I-2, I-1, I-2, I-3, I-4.

Department of Military Science and Tactics

Instruction in this unit is divided into a basic course comprising the freshman and sophomore years and an advanced course comprising the junior and senior years. These courses yield college credit and will be prerequisite to graduation.

Enrollment in advanced courses is restricted to students elected by the Principal and the Professor of Military Science and Tactics from among the students satisfactorily completing the basic course. Students in the advanced course receive benefit of certain commutation of expenses. Upon graduation, these students are eligible for recommendation to appointment as officer in the Reserve Corps of the United States Army.

Division of Home Economics

The aim of the curriculum in Home Economics is to inspire and stimulate interest in continued study, to train in accuracy, to help the student find her place in the social and economic world, and to increase the student's stock of information.

The curriculum, as outlined below, is designed to meet the needs of the following groups of persons: Those who plan to teach, those who wish to enter graduate courses leading to technical and professional work, and those who wish to use such training in solving daily problems of living.

Requirements for Degree

The degree of Bachelor of Science is conferred upon candidates who have completed all prescribed courses and met all other requirements. One hundred and twenty eight hours of acceptable work must be completed before the degree is granted.

One and Two Year Courses

The one and two year courses are offered for the benefit of three classes of student: (1) those who cannot afford the time or expense directly to acquiring more skill in some phase of Home Economics with a view of following it as a trade; (2) those who are engaged in some trade but who feel the need of acquiring more skill and efficiency in the work in which they are at present engaged; (3) those who are deficient in college entrance requirements.

Dressmaking (two years)

The purpose of this course is to prepare the student to become a practical dressmaker and garment repairer.

DRESSMAKING—This course includes the use of commercial patterns, drafting and designing, construction and renovation of garments of various types, and also practice shop management.

Cooking (two years)

The object of this course is to prepare the student not only to be a competent cook, but to manage cafeterias, restaurants, lunch rooms, and to take care of parties.

COOKING—Practice work given in planning, preparing and serving meals for all occasions.

Division of Mechanics Arts

The Division of Mechanic Arts offers four-year curricula in the following:

INDUSTRIAL ARTS EDUCATION
 BUILDING CONSTRUCTION
 MECHANICAL CONSTRUCTION
 TRADE AND INDUSTRIAL EDUCATION

Each leads to the Degree of Bachelor of Science. The first two years work is the same in all curricula. The students select industrial work with reference to its bearing on the courses in which they plan to major during the last two years. The curriculum gives fundamental opportunity for specialization through options and electives. To a limited extent, substitutions may be made for certain courses listed as required when there appears to be a good reason for this. Each substitution must have the approval of the Director of the Division.

The Division offers special two-year courses in the following industries:

ANTOMOBILE MECHANICS	PAINTING AND DECORATING
BROOM AND MATTRESS MAKING	PLUMBING AND STEAM FITTING
CARPENTRY AND CABINET MAKING	PRINTING AND LINOTYPE OPERATION
ELECTRICITY	RADIO REPAIR
LAUNDERING AND DRY CLEANING	SHOE REPAIRING
MACHINE SHOP PRACTICE	STATIONARY ENGINEERING
	TAILORING AND GARMENT MAKING

In the various industries certain tools, kits, and equipment are required. Each student is required to furnish his own tools and equipment.

OBJECTIVES

BUILDING CONSTRUCTION

The curriculum in Building Construction is intended to provide the student with practical and theoretical training in architecture and building engineering necessary to choose a career in the small construction industry. The aim is to train capable structural designers, estimators, building supervisors, and construction salesmen who aspire to become contractors and building industry executives.

Students selecting this option should get practical experience during the summer either in construction projects or in the office of an engineer or draftsman.

INDUSTRIAL ARTS EDUCATION

The curriculum in Industrial Arts Education is designed to prepare students for positions as supervisors and directors of training schools in Industrial Arts, as teachers in high schools, colleges, and trade schools; also to give technical training and experience in shop work and drafting preparatory to entering industry.

MECHANICAL CONSTRUCTION

The curriculum in Mechanical Construction is intended to prepare students in design, operation, maintenance, engineering supervision; and

for positions in industry that use power, automotive machinery, or other types of mechanical equipment.

Students selecting this option should spend at least two summers in some shop or plant doing mechanical work.

TRADE AND INDUSTRIAL EDUCATION

This curriculum is designed to meet the needs of vocational teachers. Students completing it are qualified, under the State plan for vocational education for the general continuation and trade and industrial schools.

Required Courses for Trade and Industrial Education Option

General Education	Semester hours
English	9
Mathematics	6
Sociology	3
Psychology	3
Public Speaking	3
History	6
Drawing	6
Chemistry	6
Physics	8
American Government	6
Economics	6
Industrial Laboratory Courses	20
Military Science or Physical Education	8
Courses required by the State Department of Education for Smith-Hughes certificate and other courses in Education suited to the needs of the student	24
Electives	14
	<hr/> 128

SPECIAL TWO-YEAR COURSES

Special two-year courses are offered for the benefit of two classes of students: (1) Those who cannot afford the time or expense of taking a longer course and who desire to apply their limited time directly to acquiring more skill in some industry in order to follow it as a trade and (2) those who are engaged in some industry but who feel the need of acquiring more skill and efficiency in their work.

SPECIAL STUDENTS

The Division of Mechanic Arts will admit individuals for special programs of study upon approval of the Principal and the Director of the Division.

Short courses in Mechanical Drawing and the several trades will be organized upon receipt of five applications in each branch. These courses will be primarily for persons of mature age.

ADMISSION

In order to pursue the courses leading to a degree, the student must satisfy the same entrance requirements as are prescribed for entrance to freshman college courses.

In order to enter as a special student, the applicant must be at least sixteen years of age, must have completed the seventh grade and in every case must have the Principal's approval of his application for admission.

GRADUATION REQUIREMENTS

For the Degree of Bachelor of Science the course of study as outlined below must be completed, 137 semester hours are required for the degree in the Building Construction Option and the Mechanical Construction Option, 134 semester hours are required in the Industrial Arts Education Option and 128 semester hours are required in the Trades and Industrial Education Option.

TRADE CERTIFICATE FOR COLLEGE STUDENTS

To qualify for a trade certificate of proficiency a student must satisfactorily complete the courses as outlined. Students pursuing four-year collegiate courses may meet the requirements for trade certificates by satisfactorily completing eighteen semester hours in one trade. In special cases the work may be divided between two or more closely related industries.

Division of Nursing Education

The Division of Nursing Education offers two curricula: one, over a period of three years, leading to a Diploma in Nursing, and the other, over a period of five years, leading to the degree of Bachelor of Science in Nursing. Upon completion of either curriculum, the nurse is eligible to take the Nurses' State Board Examination.

The School of Nursing has affiliation with Jefferson Davis Hospital, Houston, Texas, enabling nurses to get experience in pediatrics and obstetrical nursing. The time required in these branches of nursing is nine months.

Students with highest scholastic rating in their respective high schools and students with one or more years of college credit are given preference among applicants for admission to the Division of Nursing Education. Please send two transcripts,—one for the College Registrar and one for Nursing Education records.

NECESSARY ARTICLES

Applicants are required to bring the following articles: four sheets, three pillow cases, one pillow, sufficient bed covers, umbrella, raincoat, overshoes, black oxfords with low rubber heels, two spreads, four face towels, four bath towels, a work-box containing instruments for mending, an inexpensive watch with a second-hand, an inexpensive clinical thermometer, three dark blue dresses, and six white aprons without bibs. All entering Nursing Education students pay entrance fee, which covers the cost of tuition, books and uniform for the first year only.

HEALTH

All students of Nursing Education, when ill, are cared for gratuitously, receiving the professional services of the hospital physicians. Time above two weeks lost through illness or any other cause must be made up.

VACATION

A vacation of three weeks is given each year during the summer.

FEES AND UNIFORM

See information concerning Expenses and Fees in chapter entitled, "General Information."

FIRST YEAR

FIRST QUARTER

Course No.	Title	Clock Hours	Lec	Lab	Qtr Hrs. Credit
Eng 113	Grammar and Composition	39	3	0	3
N E 153	Anatomy and Physiology	91	3	4	5
Chem 114	Inorganic Chemistry for Nurses	78	2	4	4
N E 116	Introduction to Nursing Arts	104	2	6	4
P E 111	Physical Education Practice	26	0	2	(1)
N E 132	History of Nursing & Prof Ethics	39	3	0	3
N E 616-1	Pre-Clinical Practice	156	0	12	(Z)

SECOND QUARTER

Eng 123	Composition	39	3	0	3
N E 163	Anatomy and Physiology	39	3	0	3
N E 126	Advanced Nursing Arts	104	2	6	4
N E 124	Microbiology and Pathology	65	1	4	3
Psy 103-1	Psychology & Abnormal Behavior	39	3	0	3
P E 121	Physical Education Practice	26	0	2	(1)
N E 182	Pharmacology	39	3	0	3
N E 616-2	Pre-Clinical Practice	78	0	6	(Z)

THIRD QUARTER

Eng 133	Usage	39	3	0	3
N E 173	Anatomy and Physiology	39	3	0	3
N E 363	Emergency Nursing	52	2	2	3
N E 134	Microbiology	65	1	4	3
Psy 103-2	Psychology & Abnormal Behavior	39	3	0	3
N E 143	Nutrition, Foods & Cookery	65	1	4	3
N E 616-3	Pre-Clinical Practice	130	0	10	(Z)

FOURTH QUARTER

N E 192	Pharmacology and Therapeutics	39	3	0	3
N E 403	Diet Therapy	26	1	1	1
*N E 374	Medical & Surgical Nursing I	96	3	4	5
N E 616-4	Clinical Practice	390	0	30	10

*Note: Medical and Surgical Nursing I includes

(1) General Medicine	36 Hours
(2) Highly Communicable Diseases	16 Hours
(3) General Surgery	36 Hours
(4) Urology	8 Hours

SECOND YEAR

FIRST QUARTER

Course No.	Title	Clock Hours	Lec	Lab	Qtr Hrs. Credit
N E 322	Sociology & Soc. Prob. in Nursing	26	2	0	2
*N E 384	Medical & Surgical Nursing II	52	2	2	3
N E 626-1	Clinical Practice	429	0	33	11

*Note: Medical and Surgical Nursing II includes

- (1) Gynecology 18 Hours
- (2) Orthopedics 18 Hours
- (3) Operating Room Technique 16 Hours

Operating Room Technique to be taught as a unit in lectures, lab and procedures.

SECOND QUARTER

N E 332	Sociology & Soc. Prob. in Nursing	26	2	0	2
*N E 392	Medical & Surgical Nursing III	52	2	2	3
N E 626-1	Clinical Practice	429	0	33	11

*Note: Medical and Surgical Nursing III includes

- (1) Skin Diseases 13 Hours
- (2) Venereal Diseases 13 Hours
- (3) Tuberculosis 13 Hours
- (4) Nervous Diseases 13 Hours

THIRD QUARTER

N E 312	Obstetrics	39	3	0	3
N E 282	Pediatrics and Infant Feeding	39	3	0	3
N E 626-2	Clinical Practice	468	0	36	12

FOURTH QUARTER

Affiliation at Jefferson Davis Hospital,
Houston, Texas.

- Communicable Diseases
- Obstetrical Nursing
- Pediatric Nursing

THIRD YEAR

FIRST QUARTER

Affiliation at Jefferson Davis Hospital, Houston, Texas.

- Professional Adjustments
- Psychiatric Nursing
- Eye
- Communicable Diseases

Clinical Practice

- Obstetric Nursing
- Pediatric Nursing
- Medical Nursing Service
- Surgical Nursing Service

SECOND QUARTER

Affiliation at Jefferson Davis Hospital, Houston, Texas

Ear, Eye, Nose and Throat

Nursing and Health Service in the Family

Professional Adjustment II

Clinical Practice

Psychiatric Nursing

Newborn Nursing

Formula

Tuberculosis Clinic

Public Health

Diet Therapy—Four Weeks

THIRD QUARTER

Begin senior cadet period.

Ascertain the nurse's speciality.

Division of Graduate Studies

GENERAL STATEMENT

The principal aim of graduate work at Prairie View University is two-fold: (1) to provide the student with a comprehensive view of a major field of interest, (2) to train the student for individual or independent investigation in that field of major interest. It is expected that the graduate student seek to develop the power of independent work, to become intensely interested in the true spirit of research and to develop a scientific approach to all problems. It is also expected that the student become widely read in those fields which have direct bearing upon his major work and become familiar with the workers actively engaged in productive research in said fields. A high grade of scholarly work should distinguish the work of the Graduate Department from the fulfillment of routine requirements. The graduate student should supplement and correlate his understanding of his field, study its background and relationship in other fields and thereby gain a broader and more practical understanding of its significance. He should be able to cast new light on specific phases of the field and in some way enlarge the scope. The graduate student should acquire technique of analyzing a body of data or observation and the power to express an independent and unprejudiced judgement.

Unhampered by the restrictions that necessarily obtain in undergraduate school the graduate student is expected to assume initiative and responsibility in carrying studies on the graduate level. All facilities for study and investigation afforded by the University are open to the graduate student insofar as he is qualified to make use of such facilities. Various opportunities for study, advice and assistance of teachers are regarded simply as aids to the student in acquiring for himself the discipline and method of independent scholarship.

ADMISSION

For admission to the Graduate Division an applicant must have received his baccalaureate degree from a senior college of recognized standing. In addition, his previous record must indicate fitness and ability to pursue advanced study and to do scholarly research.

Two classes of applicants are recognized: Those who plan to work toward a masters' degree, and those who wish to broaden their education without reference to a degree. The first group will follow the regulations governing work for advanced degrees. The second group may take any work for which their preparation is adequate. Every student admitted under the first classification must pass through a probationary period. After nine weeks of residence a student's status in the Graduate Division, upon action taken by the Graduate Faculty, becomes either that of (1) candidate for a degree, or (2) non-candidate. If after one semester a student fails to show progress, the Graduate Faculty may advise such student to withdraw.

Persons seeking admission to the Graduate Division must have the Registrar's of their undergraduate institutions file with the Graduate Office complete transcripts of the undergraduate records.

When details of admission have been completed, the prospective student will be given a permit to enter. This permit must be presented at the Registrar's Office when the student reports for registration.

An application form, which is furnished free (upon request) by the Graduate Office should be filled in and filed with the Chairman of the Graduate Division at least two weeks in advance of intended registration.

Each graduate student must register on or before the days set aside for registration at the beginning of each term. A student may register at any time during the two weeks immediately preceding the formal registration days. Registration is not complete until fees are paid.

SELECTION OF MAJOR AND MINOR FIELDS

Each student registered in the Graduate Division must select a Major Field to which he intends to devote the larger portion of his time. In addition to a Major Field a student must select a Minor Field properly related to his Major. Students may receive graduate credit for graduate courses and certain advanced undergraduate courses. Certain undergraduate courses may be required without credit allowance toward an advanced degree. Special departmental regulations regarding majors and minors are given with the list of courses in the department concerned.

STUDENTS ADVISORY COMMITTEE

Each student must select as his advisers a committee composed of not less than three teachers of graduate courses. This committee will be recommended by the Director of Graduate Study in consultation with the student. The personnel of the committee must represent the fields in which the student is taking his major and minor work. A representative of the major field must be chairman of the student's Advisory Committee. This person will be the chief adviser for the student and the director of the student's research.

Enrollment

SUMMER SESSION, 1944 CLASSIFICATION

ABBREVIATIONS: Ag.—Agriculture; A&S—Arts and Sciences; H. E.—Home Economics; M. A.—Mechanic Arts; N. E.—Nursing Education; ESMWT—Engineering Science Management War Training.

SYMBOLS: 1—Freshman; 2—Sophomore; 3—Junior; 4—Senior; Sp.—Special; Uncl.—Unclassified; Grad.—Graduate Study; Wk.—Workshop.

ATTENDANCE: (1) Indicates that students attended first semester only. (2) Indicates that students attended second semester only.

Classification shown is of June 1, 1944, for students the first term; is of July 7, 1944, for students attending both terms or second term only.

Name	City or Town	Name	City or Town
Abernethy, Ruby O.; Grad.	Hempstead	(2) Boyer, Jacob; Grad.	Prairie View
(2) Adams, Allen A.; Grad.	Hempstead	Bracy, Eddie M.; A&S-1	Lubbock
Adams, Alyce M.; N.E.-3	Jefferson	(2) Bradford, A. O.; Grad.	Beaumont
Adams, Della M. C.; H.E.-4	Jefferson	Bradford, Charles E.; Ag.-4	Alto
(1) Adams, Eula M. P.; Grad.	Beaumont	Bradley, Claretha; A&S-3	Camilla
Allen, Edythe M.; H.E.-4	Houston	Bradley, Juanita; A&S-4	Tyler
(1) Allen, Estella; Grad.	Goose Creek	Bradshaw, Clifford; A&S-13	Austin
Allen, Henry; Ag-1	Gonzales	Bradshaw, Marguerite; A&S-4	Denison
Allen, Odessa L.; H.E.-4	Lufkin	Branch, Bernice; A&S-2	Houston
(1) Allen, Phillis H.; Wk.	Huntsville	(1) Branch, Corinne; A&S-Sp.	Hempstead
Allen, Ruth P.; A&S-4	Fort Worth	Brookins, Johnnie M.; H.E.-4	Dallas
Allen, Viola F.; A&S-3	Montgomery	(2) Brooks, Winzola; Grad.	Corpus Christi
Alexander, Venola; A&S-1	Oakwood	Brown, Doris; H.E.-2	Port Arthur
Alexander, Doris L.; A&S-4	Troup	(1) Brown, Enos; Ag-Uncl.	Richards
Anderson, Doris; A&S-2	Shreveport	Brown, Joshua; Ag-4	Trinity
Anderson, Lovenia; H.E.-4	Sealy	Brown, Juanita; A&S-3	Troup
Anderson, Mosselle; Grad.	Houston	Brown, Lillian E.; A&S-4	Houston
Anderson, Quincy R.; Grad.	Terrell	Brown, Ruby L.; H.E.-4	Bay City
Andrews, Ola M.; H.E.-3	Dallas	Browne, Maybelle; H.E.-4	Ardmore, Okla.
Anthony, Ollie V.; H.E.-2	Houston	(2) Bryant, Daisy; N.E.-Sp.	Prairie View
Antwine, Elmer L.; Ag-3	Thompson	Bryant, Gloretha; H.E.-3	Crockett
(1) Archie, N. L.; Grad.	Wharton	Burks, Hazel H.; H.E.-4	Cameron
(1) Atkins, Augustus; Ag-Uncl.	New Boston	Burks, Jimmie L.; Ag-4	Cameron
(2) Austin, Effie B.; Grad.	Tyler	Burleson, Betty; A&S-1	Los Angeles, Calif.
Austin, Roger S.; Grad.	Tyler	Burnim, Arzo; Ag-2	Nacogdoches
Austin, Sallie J.; A&S-2	Bryan	Burns, Andrew; Ag-3	Prairie View
(2) Bailey, Geneva; A&S-3	Paris	(1) Burns, Ve L.; H.E.-3	Augusta
Baker, Elmore; Ag-4	Sherman	Burton, Gertrude; A&S-4	Houston
Baker, Milton G.; Ag-4	Littig	Butler, Eulalia; Grad.	Palestine
(2) Baker, Roy J.; Grad.	Athens	Butler, Nola M.; H.E.-4	Palestine
(1) Barlow, Eva J.; Wk.	Sugarland	Butler, Wendell; A&S-4	Carthage
Barrett, Acie; A&S-2	Madisonville	Byrd, William; Ag-4	Midway
Barrett, Mabel; H.E.-1	Matador	Calhoun, Inez; H.E.-4	Oakland, Calif.
Beason, Torance; ESMWT	Palestine	(1) Campbell, Alice; A&S-1	Houston
Bedford, Deborah L.; H.E.-4	Dallas	(1) Campbell, A. L.; A&S-1	Bryan
Bell, Ira; M.A.-Sp.	Alvin	Campbell, Dorothy; A&S-3	Corpus Christi
(1) Bell, Nathaniel; M.A.-1	Marshall	Carpenter, Georgia; A&S-1	Hawkins
Bennett, Lydia; H.E.-4	Newton	Carpentier, Marguerite; H.E.-3	Hawkins
Bess, Bessie Mae; A&S-4	San Antonio	Carrington, Dorothy; A&S-2	Dallas
(1) Bickens, Augustine; Wk.	Tyler	Carroll, Willie H.; A&S-Uncl.	Prairie View
Blackwell, Jessie M.; H.E.-12	Pettus	Carter, Emma J.; N.E.-3	Palestine
(1) Blakeley, Sedalia; A&S-3	Ferris	(2) Carter, Pauline; A&S-4	Bellville
Bland, Reda L.; Grad.	Goliad	Cary, Elsie Mae; H.E.-3	Kiometra
Blanks, Vittoria; Grad.	San Antonio	Catchings, Bessie V.; A&S-4	Houston
Blanton, George; A&S-1	San Angelo	Champion, Berneather; A&S-3	Greenville
Blount, Hattie M.; A&S-2	Houseton	(1) Chaney, LaFayette; Grad.	Waco
Bonner, Hester; N.E.-3	Dallas	(1) Chaney, Marguerite; A&S-3	Waco
(1) Boston, Arbirda; Grad.	Caldwell	(1) Charlton, Viola; H.E.-4	Kelty
Bowden, Esdale W.; H.E.-4	San Antonio	Chase, Grace; A&S-1	Beaumont
Bowers, Tillie M.; A&S-4	Wharton	Chase, Sylvester; Ag-4	Bay City

Name	City or Town	Name	City or Town
Chester, Mildred; H.E.-3	Tyler	Dunn, Ethel; H.E.-4	Groveton
Clark, Ada S.; A&S-Sp.	San Antonio	(1) Duval, Dewitt; Wk	Chapel Hill
Clark, E. Melroy; H.E.-4	Orange	Dykes, Henrietta; A&-3	Milano
(1) Clark, Walter; Grad	Orange	Eanes, Wilburn; M.A.-4	La Grange
Cleaver, Celestine; Sp.	Prairie View	Echols, Lillian; A&S-4	Oakwood
Cleaver, Dorothy; H.E.-1	Prairie View	Edwards, Frankie; H.E.-4	Point
(1) Cobb, Clyde; Grad	Longview	Eldridge, Dorothy; N.E.-4	Houston
Cockrell, Rosa L.; H.E.-4	Simonton	(1) Elliot, usie; A&S-4	Refugio
Cole, Verta L.; H.E.-3	Arp	Ellis, Charlie; A&S-4	Crockett
(1) Coleman, John; Wk	Ennis	Ellis, Delverna; A&S-4	Crockett
2		Elis, Lula; Grad	Harlingen
(1) Coleman, Roosevelt; Ag-3	Newton	Elmore, Bernice; H.E.-1	Coldsprings
Collins, Horace; Ag-3	La Grange	Elmore, Evelyn; A&S-4	Coldsprings
Collins, Roy; A&S-1	Galveston	Enge, Dimple; H.E.-4	Groesbeck
Collins, Selma; A&S-4	Houston	(1) Ewell, Marjorie; Grad	Frankston
(1) Collins, Sybil; Wk	Shreveport, La.	(2) Farris, Bessie; Grad	Beaumont
Conner, Jane; H.E.-4	Itasca	Farris, Henry; Ag-4	Navasota
(1) Cook, Calvin; ESMWT	Gladewater	Fennoy, Thelma; Grad	Lodi
(1) Cook, Frances; Wk	Tyler	Ferguson, Wendell; A&S-1	Dallas
Cook, Othelia; H.E.-2	Tyler	Flix, Gloria; N.E.-4	Houston
Cooper, Idalia; H.E.-4	Hallsville	(1) Ford, Clara; A&S-Uncl.	Navasota
(1) Corley, Ester; H.E.-Sp.	Seguin	Ford, Mary P.; A&S-3	Ennis
(1) Coss, Winnow; Wk	Carthage	Foster, Carrie F.; H.E.-1	Groesbeck
Cowan, Elizabeth; N.E.-4	Bessemer, Ala.	(2) Foster, Charles; Ag-2	Austin
Cox, Willie; A&S-3	Lubbock	(1) France, Lola; Grad	Houston
(1) Cravin, Alpha; ESMWT	Prairie View	Francis, Ruby; N.E.-4	Cuney
Crawford, Florence; H.E.-4	Texarkana	Franklin, Calvin; A&S-4	Trinity
(2) Crawford, Geneva; A&S-Sp.	Texarkana	(1) Frazier, Dora M.; A&S-4	Woodville
Crawford, Juanita; H.E.-3	Richards	Frazier, Margaret; Grad	Kirvin
(1) Crawford, Ruth E.; H.E.-3	Richards	Frazier, Merle; A&S-3	Woodville
Crawford, Wayne; A&S-4	Gainesville	(1) Friday, Wilburn; ESMWT	Waco
(1) Crayton, Narva; A&S-Uncl.	Bullard	Fridia, Otto; A&S-3	Wichita Falls
(1) Crecy, Mary L.; H.E.-4	Brazoria	Fuller, Richard; Ag-4	Cushing
Crittenden, Doris; N.E.-3	Terrell	(1) Furlow, Mary; A&S-3	Los Angeles, Calif.
Cuffie, Eliza; H.E.-4	Carmona		
Curl, Helen; N.E.-4	Nacogdoches	Garland, Doris; A&S-4	Huntsville
Curtis, Mattie; H.E.-2	Dallas	Garrett, Marie; A&S-3	Kirvin
Custard, Josie L.; H.E.-3	Evergreen	Gee, Clophus; Ag-4	Dallas
Dacus, Alton; Grad	Naples	(2) Gee, Hazel; Grad-Sp.	Tyler
Daniels, John; A&S-4	San Antonio	Gee, Ruth E.; Grad	Tyler
Daniels, Josie; A&S-4	Brackettville	Gerald, Delores; H.E.-2	Prairie View
Darby, Julia A.; H.E.-4	Vernon	Gerald, Gloria; H.E.-4	Prairie View
Darden, Rose E.; A&S-3	Los Angeles, Calif.	Goodman, Lula; Grad	Houston
		Goodwin, Ruby; A&S-2	Indianapolis, Ind.
Dautrive, Nettie; H.E.-1	Port Arthur	(2) Gavon, Frankie; H.E.-2	Prairie View
Davenport, Jasper; ESMWT	Riverside	(1) Grace, Annie; Wk	Midway
David, Veola; Wk	Madisonville	(1) Gray, Dollie; A&S-3	Calvert
Davis, Doris; Wk	Atlanta	Gray, Ernestine; H.E.-3	Telephone
Davis, Jessie; M.A.-Sp.	Centerville	(1) Gray, Ruth; Wk	Houston
Davis, Johnnie J.; H.E.-2	Dallas	(2) Grays, Velma; N.E.-4	Sulphur Springs
Davis, Lillian D.; A&S-Sp.	Houston	(1) Green, Josephine; Grad	Houston
Davis, Olenka; H.E.-4	Dallas	Greene, Erma L.; A&S-3	Bay City
Davis, Willie M.; Grad	Hempstead	Greene, Lige D.; M.A.-3	Port Arthur
Day, Norine; H.E.-1	Chickasha, Okla.	Greenwood, Mary; A&S-1	Jefferson
(1) Dean, Julia; Grad	Tyler	Guess, Richard; A&S-3	Houston
(1) Delley, Alma; Wk	Tyler	Guinn, Corinne; H.E.-4	Jefferson
Denis, Charlean; H.E.-3	Dallas	(1) Guinn, Edward; A&S-4	Fort Worth
Derry, Dolphus; A&S-2	Waelder	Gunter, Alberta; A&S-2	Mineola
(1) Dever, Willie; A&S-3	Brenham	Hackett, Daisy; H.E.-3	Corpus Christi
Deville, Thelma; H.E.-4	Beaumont	(1) Hackett, Vonnia; Wk	Tyler
Dickerson, Alpha; H.E.-4	Brenham	Haggerty, Ollie M.; A&S-3	Karnack
(2) Diggs, Sidney; H.E.-4	Bellville	(1) Hall, John; A&S-Sp.	Prairie View
Dillard, Verna; A&S-3	Kendleton	Hamilton, Ruby; H.E.-3	Camden
Dobbins, Naomi; H.E.-3	Ferris	(2) Hammonds, L. C.; Grad	Overton
Dorsey, Alice V.; H.E.-2	Dallas	Hampton, Olivia; A&S-4	Kiomatras
Doucette, Celestine; A&S-3	Louvreauxville, La.	Hanks, Lincoln; Ag-4	Dallas
		(1) Harden, Laurence; H.E.-3	Dallas
Downs, Charles; A&S-2	Tyler	Harden, Mary; H.E.-4	Dallas
(1) Doyle, Ruth; A&S-Sp.	Prairie View	Hardman, Eddie M.; A&S-1	Coolidge
Draughan, Bobbie; N.E.-4	Wichita Falls	Hardway, Doris; A&S-Sp.	Ponta
Drisdale, Alceste; N.E.-4	West Point	Harper, McNoble; Grad	Bivins
Dukes, Dora M.; N.E.-4	San Antonio	Harris, Adrene; A&S-2	Groesbeck
Duncan, Alvera; A&S-2	Smithville	Harris, Albertine; N.E.-4	Houstin
Duncan, Farris; ESMWT	Corpus Christi	(1) Harris, Sadye; A&S-Sp.	Prairie View

ENROLLMENT

Name	City or Town	Name	City or Town
Harrison, Charles; Grad	Prairie View	(1) Johnson, Mattie; A&S-4	De Kalb
(2) Hart, Muzary; A&S-4	Brenham	Johnson, Mattie T.; A&S-4	San Antonio
Hartfield, Massaree; H.E.-4	Seguin	Johnson, Selma; H.E.-2	Corrigan
(1) Harvey, Elliot; Grad	Goose Creek	Jones, Edna M.; A&S-4	Caldwell
Hathaway, Sarah; Grad	Taylor	Jones, Evelyn; A&S-Uncl	Mineola
Hawkins, Gertrude; A&S-4	Navasota	(1) Jones, Perdita; Grad	Houston
Hawthorne, Jarusha; N.E.-3	Newton	Jones, Savannah; A&S-2	Houston
(1) Hayes, Frances; H.E.-4	Seguin	Jones, Tom; A&S-4	Caldwell
(1) Hayes, Luther; Grad	Jefferson	(1) Jordan, Chanie; Grad	Bryan
(1) Hazley, John; Grad	Austin	Jordan, Sarah; H.E.-4	Cedar Lake
(1) Heard, John; A&S-Uncl	Mexia	Juarez, Maria; N.E.-4	Minatare, Nebr.
(1) Heard, Pinkie; A&S-Uncl	Mexia	(1) Keaton, Leola; A&S-3	Coolidge
(1) Heard, Ruby; A&S-Uncl	Mexia	Kelley, Ada M.; H.E.-4	New Waverly
Henderson, Mae; H.E.-4	Prairie View	Kelly, Ethel; A&S-4	Oakwood
(1) Hendricks, Louie; A&S-4	Dallas	Kelley, Maude; H.E.-4	New Waverly
Hester, Robert; Ag-14	Groesbeck	Kemp, Isaac; Grad	Columbus
(1) Hicks, Annie; Wk	Detroit	Kennard, Louise; A&S-4	Anderson
(2) Hightower, Edward; ESMWT	Galveston	Kennedy, Marston; H.E.-4	New Waverly
Hightower, Gertrude; A&S-2	Galveston	Kenyon, Mattie; Grad	Okla. City, Okla.
(1) Hill, Bernice; Wk	Jacksonville	(1) Kimble, Ernest; ESMWT	Axtell
(1) Hill, Bennie; A&S-4	Besmsay	KiKng, Corrie; H.E.-3	Crockett
Hill, Opal; N.E.-3	Denton	King, Elzora; H.E.-3	Beaumont
Hilliard, Richard; M.A.-Sp	Waco	King, Emma; A&S-4	Hempstead
(1) Hines, Harry; Grad	Marlin	King, Jewel; H.E.-3	Dallas
Hines, Lillian; A&S-4	Navasota	King, Johnnie; A&S-3	Benchley
Hixson, Merriell; A&S-3	Dallas	Kinlaw, Lucile; A&S-2	Washington
Hodges, Willie; M.A.-Sp	Waco	Kirby, Vernon J.; A&S-2	Katy
Hogan, Gladys; A&S-4	Brenham	Kirksey, Vera; A&S-4	Wiergate
(1) Hogue, Helen; Wk	Winslow	Knighton, Emerson; A&S-Uncl	Prairie View
Hooper, Ella Jean; A&S-1	Tenaha	Knotts, Pearl; A&S-2	Houston
Hooper, Russell; Ag-3	Timpson	Kurney, Pinkney; M.A.-Sp	Thornton
Hopkins, Mildred; H.E.-4	Crockett	(1) Lair, Florence; A&S-2	Waxahachie
Hopper, Mae Ruth; H.E.-4	Tyler	(2) Langrum, Henry; Grad	Crockett
(1) Hopper, Raszette; Grad	Nacogdoches	Langrum, Mabel; Grad	Crockett
(2) Houston, Willie; A&S-4	Crockett	(1) Laster, Ella; A&S-4	Washington
Howard, Bernice; N.E.-4	Beaumont	Lawson, Janie; A&S-2	Texarkana, Ark.
Howard, Mabel; N.E.-4	Petersburg, Va.	(1) Leaks, Carlton; Wk	Chapel Hill
Hubert, Willie; N.E.-4	Camden	Lee, Lucille; A&S-4	Sherman
Huckaby, James; A&S-4	Palestine	(1) Lee, Lucille; A&S-4	Wharton
Huckaby, Norman; A&S-1	Buffalo	Lee, Ruby D.; H.E.-2	Chapel Hill
Huff, Marie; N.E.-4	Victoria	(2) Lendon, Willie; M.A.-Sp	Port Arthur
(1) Hughey, John; Wk	Tyler	Levy, Julia; H.E.-2	Beaumont
(2) Humphrey, Charlotte; A&S-3	Galveston	Lewis, Charles; A&S-4	Prairie View
(1) Humphrey, General; Grad	Coleman	Lewis, Clabe; A&S-2	Crockett
(1) Humphrey, Ruby; Grad	Conroe	Lewis, Florence; H.E.-4	Fodice
Humphrey, Ruth; A&S-4	Marlin	Lewis, Johnnie M.; A&S-4	Dallas
Humphrey, Thomas; Grad	Conroe	Lewis, Millie; Grad	Crockett
Hunt, Versalene; N.E.-3	Palestine	Livingston, Newman; A&S-4	Lovelady
Hunter, Juanita; A&S-4	Dallas	(1) Lockett, Willie F.; Grad	Garrison
(1) Hunter, L. M.; Grad	Marlin	Lockhart, Lawrence; Grad	Brenham
(1) Hutcheson, Annie; A&S-1	Ferris	Lucas, Evelyn; N.E.-3	Beaumont
Irving, Irene; N.E.-4	Okla. City, Okla.	Lucas, Minnie; N.E.-3	Beaumont
Jackson, Charles; Grad	Gladewater	McCann; Christine; A&S-3	Egypt
(2) Jackson, Christelle; H.E.-3	Groesbeck	McCann, Lois; A&S-4	Colmesnil
(1) Jackson, Edward; Wk	Midway	(1) McClain, Mildred; Wk	Marshall
(1) Jackson, Exie; Wk	Huntsville	McClellan, Myrtle; H.E.-Sp	Lindale
Jackson, Garrison; A&S-4	Oakwood	McClennan, Walter; A&S-2	Carthage
Jackson, Gwendolyn; Grad	Gladewater	McCloud, Alice; H.E.-4	Houston
Jackson, Helen; H.E.-4	Augusta	McClure, Mayme; A&S-3	Neches
Jackson, Iantha; A&S-4	Bay City	(2) McDade, Jewel; A&S-Sp	Hempstead
Jackson, Jeanette; A&S-4	Houston	McDonald, Clarena; N.E.-4	Houston
Jackson, Mary; Grad	Goose Creek	(1) McDonald, Eloise; Wk	Teague
Jackson, Ulaya; H.E.-4	Oakwood	(2) McFadden, Frank; M.A.-1	Houston
James, Eddie; Ag-3	Conroe	McGill, Timothy; A&S-1	Mt. Pleasant
(2) Jefferson, C. B.; Ag-3	Calvert	(2) McGlothen, Hattie; N.E.-4	Huntsville
Jefferson, Lettie; A&S-3	Houston	McHenry, Ruth; N.E.-4	Corsicana
Jenkins, Dorothy; H.E.-2	Dallas	McKenzie, Zemrie; H.E.-2	Pittsburgh
Johnson, Alice; A&S-4	Paris	(1) McKinney, Olivia; Grad	Houston
Johnson, Anna; A&S-1	Yoakum	(1) McNeil, Ophia; Wk	Galveston
(1) Johnson, Elvira; A&S-3	Brenham	Malone, Lillian; Grad	Hearne
(1) Johnson, Gertie; A&S-3	Crockett	Malone, Mildred; N.E.-4	Houston
Johnson, Helen; H.E.-2	Marshall	Manley, Norene; H.E.-3	Beaumont
Johnson, Louis; A&S-3	Houston	Mann, Lillye M.; Grad	Houston
(1) Johnson, Lura; Grad	Fairfield		

Name	City or Town	Name	City or Town
(2) Martin, Dorothy; A&S-Sp.	Prairie View	(1) Powell, Elijah; Grad.	Beaumont
(1) Martin, Ruth; H.E.-3	Houston	Powell, John; Grad.	Davilla
(2) Mathis; Willie; Ag-4	Groveton	(1) Powell, Minnie; Wk.	Huntsville
Matson, Eloise; H.E.-4	Trinity	Powell, Robbie; H.E.-4	San Antonio
Merrick, Portia; Grad. Baton Rouge, La.		Pratt, Melba; A&S-1	Liberty
Mickens, Eva; A&S-4	Prairie View	Precipha, Willie; A&S-4	Mexia
(2) Mickens, Mary; A&S-Sp.	Prairie View	Price, Lula; A&S-2	Smithville
Milam, Eric; A&S-4	Washington	(2) Prince, Cecil; Grad.	La Grange
Miller, George; A&S-4	Houston	(1) Proffitte, Ellen; Grad.	Hearne
(1) Mims, Bennetti; A&S-Sp.	Tyler	Phopphet, Orelia; H.E.-4	Houston
Mitchell, Lillia; H.E.-4	Douglass	(2) Punchedard, Ruth; A&S-3	Brenham
Montgomery, Inez; A&S-2	Dallas	(2) Rainey, Efris; M.A.-Sp.	Slaton
Moon, Clara; Grad.	Sulphur, Okla.	Randle, Irene; Grad.	Bryan
Moore, Bessie; H.E.-4	Houston	Randle, Lola; H.E.-2	Houston
Moore, Erma; A&S-1	Houston	Randolph, Norman; M.A.-3	Orange
Moore, Madelyn; A&S-1	Austin	Ratliff, Randolph; Ag-4	Temple
Moore, Mertis; N.E.-3	Wortham	Raven, Johnnie; A&S-4	Brenham
(1) Moore, Strother; M.A.-1	Los Angeles, Calif.	Ray, Emma; H.E.-4	Paris
(1) Moore, Thomas; M.A.-4	La Grange	Ray, James; A&S-1	Houston
(1) Moore, Wendell, Ag-Sp.	Longview	Reece, Froncell; Ag-1	Conroe
(2) Morgan, Louis; Grad.	Georgetown	Reese, Emma; N.E.-3	Abilene
(1) Morris, Mittie; Grad.	Caldwell	Reese, Goldie; Grad.	Houston
(2) Moseley, Odessa; A&S-Sp.	Crockett	Reeves, Lenora; H.E.-2	Palestine
Mosely, Pauline; H.E.-4	Jacksonville	Rencher, Mae; A&S-3	Weirgate
(1) Mullins, Mildred; Grad.	Terrell	Renfro, Martha; H.E.-4	Calvert
Murphy, Alexander; Ag-1	Cameron	Richard, Eudora; Grad.	Houston
(1) Myers, Ewitt; Grad.	Wharton	Richard, Muriel; N.E.-3	Abilene
Myers, Mabel; A&S-3	Dallas	(1) Richards, Joel; A&S-2	Velasco
(1) Neely, Leon; ESMWT	Houston	Richardson, Birdie; A&S-4	Bremond
Neelley, Pearl; H.E.-4	Waco	Richardson, Willie; Grad.	San Antonio
(2) Nelson, Geraldine; Grad.	Oakwood	Ricks, Jeffery; A&S-1	Hearne
Nelson, Isaac; Grad.	Prairie View	(1) Riddle, Lottie; H.E.-4	Lubbock
(1) Newsome, Harding; Grad.	Troup	Rigsby, Alex; Ag-4	Woodville
Newsome, Margie; H.E.-4	Troup	Rigsby, Roseanna; A&S-3	Bedias
(1) Nickens, Minnie; H.E.-4	Crockett	Rivers, Willie; A&S-4	Houston
(1) Norman, Glaucus; Grad.	Austin	(2) Roach, Oberta; A&S-4	Beaumont
(1) Norris, Dorothy; Wk.	Tenaha	(1) Roan, Mary; A&S-4	Pelly
Norville, Emma; H.E.-4	Jefferson	Robbins, Harriet; H.E.-3	Bay City
Norwood, Jural; A&S-2	El Rina, Okla.	(2) Roberson, Victoria; Uncl.	Overton
Oakman, Alma; A&S-1	Houston	(1) Roberts, Johnnie; Ag-Sp.	Shreveport, La.
Oakman, Gloria; A&S-1	Houston	Robertson, Athal; Grad.	Marlin
(1) Oliphant, Mary; Wk.	Huntsville	(1) Robinson, Helen; Wk.	Marshall
Parnell, Gladys; N.E.-3	Navasota	(1) Robinson, Lula; A&S-2	Hearne
(1) Owens, Grace; A&S-1	Palestine	Roett, Rupret; Ag-4	Houston
Payne, Allie; A&S-4	Houston	Rollerson, Alma; H.E.-2	Paris
Payne, Lamar; Ag-4	Houston	Ross, Clay Etta; N.E.-4	Corsicana
Payne, Zenobia; H.E.-3	Longview	Ross, Mary Belle; N.E.-3	Shiro
Pendleton, James; Grad.	Houston	Ross, Reva Mae; A&S-3	Bloomington
(1) Penn, Ethel; A&S-4	Dallas	Routt, Annie; A&S-4	Navasota
Pernetter, Sidney; A&S-4	Beaumont	Rutherford, Helen; N.E.-3	Hawkins
Person, Roberta; A&S-3	Prairie View	(1) Rutherford, Joseph; ESMWT	Hawkins
Peterson, Mazie; H.E.-4	Yarboro	Sampson, Hattie; H.E.-4	Port Arthur
Phea, Maud; A&S-2	Wellington	Samuel, Gerland; Ag-4	Waelder
Phegans, Lessie; A&S-3	Wellington	Samuel, Nora L.; H.E.-1	Beakwood
Philo, Annie; A&S-4	Bedias	Sanders, James; A&S-1	Matador
(2) Phillip, Jimmie; Grad.	Prairie View	Sanders, Juanita; N.E.-4	Lufkin
Phillips, Ernestine; A&S-2	Clarksville	Sanders, Mamie; H.E.-2	McKinney
(1) Phillips, Jody; Wk.	Tyler	Sanders, Reta; Grad.	Jefferson
Pierce, Vivian; H.E.-4	Fort Worth	Sasser, Sallie; Grad.	Goldsboro, N. C.
(1) Pigford, Evelyn; A&S-1	Bryan	Scott, Eloise; A&S-1	Fort Worth
(1) Pigford, Vivienne; Grad.	Bryan	Scott, Marie; N.E.-3	Bryan
Pipkin, Annie; A&S-2	Prairie View	Scurlock, Hazel; H.E.-4	Crockett
(1) Polk, Charlie; Grad.	Mindew, La.	Seals, Lizzie; Grad.	Tyler
Polk, Cleo; H.E.-2	Waco	Searcy, Claytie; A&S-1	Dallas
(2) Pollard, Earlie; H.E.-4	Galveston	Senegal; Lula; N.E.-4	Galveston
Pollock, Wanda; A&S-4	Mexia	Shackelford, Tyrone; A&S-2	Montgomery
Pope, Colleen; H.E.-3	Dallas	Shannon, G. Ruth; A&S-3	Lamarque
(2) Porter, Etta; A&S-Sp.	Prairie View	Sharpe, Grace; A&S-4	Ardmore, Okla.
(1) Porter, Mabel; A&S-2	Brenham	Shavers, Millie; H.E.-Sp.	De Kalb
Porter, Naomi; A&S-3	Crockett	Shavers, Ora; Grad.	Overton
(1) Powell, Christine; A&S-4	Beasley	Shearil, Alberta; Grad.	Carlsbad, N. M.
		(1) Shelby, Laura; H.E.-4	Brenham

Name	City or Town	Name	City or Town
(1) Shepard, Kathleen	A&S-1... Stoneham	(1) Thompson, Wardell	Grad... Hempstead
Sheppard, Lee A.	A&S-2... Los Angeles	Thompson, Wilma	H.E.-4... Bon Weir
Sheppard, Lee A.	A&S-2... Los Angeles, Calif.	Tipton, Naomi Belle	N.E.-4... Dallas
Sherow, Ammer	H.E.-4... Overton	Todd, Adelaide	A&S-4... Dallas
Shields, Fred	M.A.-Sp... Houston	Toles, Ada	A&S-2... Calvert
(2) Simmons, Mary	A&S-3... Wortham	(1) Toliver, Daniel	ESMWT... Bryan
Simpson, Marcelle	H.E.-4... Houston	Toliver, Ida	Grad... Waco
Sims, Charlotte	A&S-3... Shreveport, La.	Truscott, Hattie	Wk... Trinity
Sims, Ida R.	H.E.-3... Plum	(2) Tubbs, Geretha	Grad... Tyler
Sims, Theo	H.E.-4... Shereport, La.	(2) Tubbs, Luther	Grad... Tyler
Singletary, Robert	A&S-2... Texarkana	(17) Tucker, Sophia	M.A.-Sp... Hempstead
(1) Sirls, Theodore	ESMWT... Troup	Turner, Alta	A&S-3... Mount Pleasant
(2) Smith, Alexander	Grad... Frankston	Turner, Fannie	H.E.-3... Houston
(1) Smith, Ernestine	H.E.-3... Shepherd	(2) Turner, Florence	A&S-1... Dallas
Smith, Eva M.	H.E.-4... Phoenix, Ariz.	Upton, Ruth	A&S-4... Houston
(1) Smith, George	Uncl... Prairie View	(1) Vaughn, Ruby	A&S-4... De Kalb
Smith, Lena	H.E.-3... Centerville	Vonner, Dorothy	H.E.-4... Lovelady
Smith, Leonia	Grad... Smithland	Wade, Frank	Ag-2... Douglass
Smith, Levester	A&S-3... Houston	(2) Wagner, Florence	A&S-3... Beaumont
Smith, Malvina	A&S-4... Crockett	(1) Walker, E. R.	M.A.-Sp... San Antonio
Smith, Ruby M.	H.E.-4... Richmond	Walker, Johnnie	A&S-4... Washington
(1) mith, Tallie	Grad... Amarillo	(1) Wall, Pauline	Grad... Corsicana
Smith, Willie M.	A&S-3... Texarkana	Walton, Jimmie	H.E.-4... Winona
Smith, Willie M. W.	H.E.-4... Madisonville	Ward, Vecola	H.E.-1... Bogata
(2) Smothers, James	Wk... Chapel Hill	(1) Ware, Ethel	Wk... Tyler
(1) Spencer, Edward	Wk... Madisonville	(1) Warren, Juanita	Grad... Prairie View
(2) Spencer, Rosette	A&S-4... Madisonville	Washington, Arthur	M.A.-3... Dallas
Spivey, Chlorine	H.E.-4... Huntsville	Washington, Doris B.	H.E.-4... Lamesa
Standifer, Lonnie	Ag-1... Itasca	Washington, Ehmajean	H.E.-1... Marlin
Starr, Cassie	H.E.-4... Overton	Washington, Ethel	H.E.-3... Groesbeck
(2) Staton, Ernestine	Grad... Tyler	(2) Washington, F. E.	A&S-4... Houston
(2) Staton, William	Grad... Tyler	Washington, Ruby	H.E.-4... Houston
(1) Stephens, G. G.	M.A.-Sp... Marshall	(2) Washington, Vera	A&S-4... Lake Charles, La.
Steptoe, Hazel	A&S-4... Dallas	Watkins, Ruby	A&S-4... Okla. City, Okla.
Sterling, Melba	A&S-4... Cleburne	Watson, Willie	H.E.-4... Sunnyside
Stevens, Erma L.	H.E.-4... Groveton	(2) Webb, Johnnie M.	H.E.-4... Brenham
(2) Stewart, Claudia	A&S-4... Hempstead	Webb, Mildred	H.E.-3... Oakwood
Strange, Althea	A&S-4... Marlin	Webster, Cubie	A&S-4... Dallas
Strong, Sallie	H.E.-4... Crockett	Wedgeworth, Emmitt	Ag-4... Dallas
(1) Stubblefield, Beauregard	Grad... Houston	(1) Wedgeworth, H. T.	Ag-Sp... Gladewater
Summer, Helen	H.E.-4... San Antonio	Weinberg, Alphonse	Grad... Beaumont
Sutton, George	Grad... Fort Worth	Westbrook, Blanche	A&S-3... Crockett
Swaney, Edna M.	H.E.-4... Cuero	Westbrook, Milas	M.A.-4... Crockett
(1) Swoopes, Robert	ESMWT... Waco	(1) Wheaton, Gladys	A&S-2... Texas City
Tapscott, Gertrude	Grad... Prairie View	White, Gazella	Wk... Marshall
(2) Tarrow, Willie	Grad... College Station	(2) White, Horace	Grad... Winnsboro, La.
Tatum, Doris	H.E.-4... San Antonio	(1) White, Reuben	Grad... Nacogdoches
Taylor, Alexander	Ag-4... Caldwell	(1) Whiten, Otis	Wk... Shreveport, La.
(1) Taylor, B. J.	Grad... Kurten	(2) Whiteside, Willie	H.E.-3... Stoneham
(2) Taylor, Bennie	A&S-Sp... Prairie View	Whiting, Ola	H.E.-4... Brenham
Taylor, Beulah	H.E.-4... Denton	Whitlow, Vera	H.E.-2... Port Arthur
Taylor, Charles	Ag-3... Kendleton	Whitman, Lula	H.E.-2... Linden
Taylor, Elvie	Grad... Goliad	Wilkinson, Bernice	A&S-3... Leesburg
(1) Taylor, Mabel	Wk... Tyler	(1) Williams, Addie	A&S-4... Temple
(1) Teal, Winston	A&S-1... Nacogdoches	(1) Williams, Aline	Wk... Marshall
(1) Terrell, Ora L.	A&S-4... Victoria	(2) Williams, Belle	A&S-4... New Waverly
Terry, Lura	A&S-3... Baldwin, La.	Williams, Doris	H.E.-1... Mexia
(2) Thomas, Allie	A&S-4... Beaumont	(2) Williams, Edna	A&S-2... Kanawha
Thomas, Annie L.	H.E.-2... Smithville	Williams, Elsie	H.E.-4... Crockett
Thomas, Benjamin	Grad... Ennis	(2) Williams, Eva	A&S-4... Chapel Hill
Thomas, Daniel	Ag-4... Liberty	Williams, Gladys	H.E.-4... Longview
(1) Thomas, Faustine	Grad... Tyler	Williams, Jean	A&S-4... Houston
Thomas, Gussie	H.E.-4... Kirbyville	(1) Williams, Jesse	Grad... Houston
Thomas, Helen	A&S-4... Dallas	(2) Williams, Mae	H.E.-Sp... Alto
(1) Thomas, J. C.	M.A.-Sp... San Antonio	Williams, Martha	Wk... Huntsville
(1) Thomas, Mattie	Wk... James	Williams, Ora	A&S-3... Hempstead
Thomas, O. J.	Grad... Prairie View	Williams, Otis	Ag-1... San Angelo
Thomas, Rubye	Grad... Houston	Williams, Rosa B.	H.E.-4... Dallas
Thompson, Lee	M.A.-Sp... Hawkins	Williams, Ruth	H.E.-2... Mount Enterprise
Thompson, Mildred	A&S-1... Bon Weir	Williams, Valeria	A&S-3... Huntsville
(1) Thompson, Naomi	Grad... Fort Worth	Williams, Wilhelm	A&S-4... Cedar Lane
Thompson, Ora	Grad... Hempstead	Willis, Hazel	A&S-3... Fairfield