

Prairie View A&M University

Digital Commons @PVAMU

---

Faculty & Staff News

Academic Affairs Collections

---

10-1999

## Faculty & Staff News - October-November 1999

Prairie View A&M University

Follow this and additional works at: <https://digitalcommons.pvamu.edu/faculty-and-staff-news>

---

### Recommended Citation

Prairie View A&M University. (1999). Faculty & Staff News - October-November 1999., *Vol. III No. 8*  
Retrieved from <https://digitalcommons.pvamu.edu/faculty-and-staff-news/3>

This Book is brought to you for free and open access by the Academic Affairs Collections at Digital Commons @PVAMU. It has been accepted for inclusion in Faculty & Staff News by an authorized administrator of Digital Commons @PVAMU. For more information, please contact [hvkoshy@pvamu.edu](mailto:hvkoshy@pvamu.edu).



# FACULTY/STAFF N • E • W • S

A Monthly Publication for Prairie View A&M University  
"A Member of the Texas A&M University System"

VOLUME 3 NUMBER 8

OCTOBER, NOVEMBER, 1999

## Graves Named New Chancellor

**C**OLLEGE STATION, Texas - Leaving behind a tenure marked by unprecedented educational, financial and outreach successes, Dr. Barry B. Thompson, Chancellor of The Texas A&M University System for the past five years,

that annually serve more than 88,000 students and reach over 3.5 million others through outreach and continuing education programs.

"I am grateful to be a member of the leadership team that will move the A&M System and its member institutions into the 21st Century," Graves said. "I especially want to thank Dr. Thompson for his leadership over the last five years that has resulted in a thriving and healthy higher education system."

At a May 27 meeting in Prairie View, the board announced Graves' nomination as the sole finalist in the chancellor search - a search that began close to a year ago and involved the consideration of roughly 80 candidates.

Graves, 59, is a retired three-star Army general originally from the Texas Panhandle town of Roaring Springs. His educational pursuits and military career have taken

him across the globe, from the venerable halls of Oxford University in England to the dense jungles of Vietnam.

Most recently, Graves and his wife, Gracie, have made their home in Austin, where he is the visiting Tom Slick Professor of World Peace at the University of Texas at Austin's Lyndon B. Johnson School

of Public Affairs.

Graves' path back to his home state has been a long, winding one.

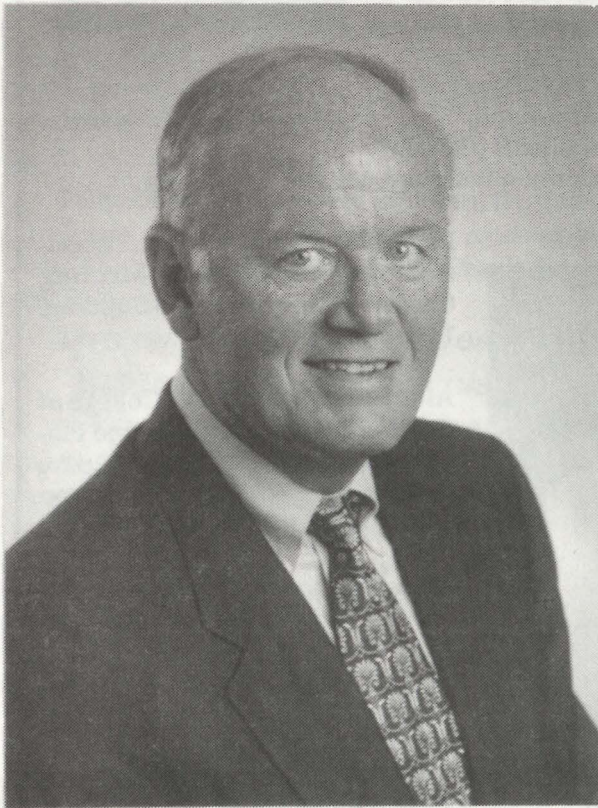
After graduating from Amarillo High School, Graves moved to West Point, N.Y., to pursue a bachelor of science degree. He graduated in 1961 with the highest grade point average in five separate academic disciplines, and was ranked second out of 535 students in terms of academic, athletic and leadership performance.

Graves was named a Rhodes Scholar and traveled to Oxford to study politics, philosophy and economics. He was awarded a bachelor of arts degree from the university in 1964, a master of arts degree in 1968 and a master of letters in 1971. From there, Graves moved back to the United States and furthered his education through courses of study at Army professional schools.

Beginning in 1961, Graves spent 22 years at various Army command and staff positions, where he served in such countries as the Federal Republic of Germany, the Republic of Vietnam and the Dominican Republic. During this time, he also returned to his alma mater in West Point, where he taught international relations and comparative foreign governments.

Graves' Army career involved such positions as personal assistant to Secretary of Defense James Schlesinger; Deputy Director for strategy, plans and policy; and vice director of the Joint Military Staff.

In 1987, Graves was named commandant of the United States Army War College where he helped pre-



*Howard D. Graves*

will pass the torch on to his successor, Howard D. Graves.

During a special conference call meeting recently, members of the A&M System Board of Regents voted unanimously to name Graves chancellor-elect of the A&M System.

As such, he will oversee the system's nine universities, eight agencies and health science center

See GRAVES page 5

## Online Instructors

**P**rairie View A&M University's Center for Teaching Excellence and Distance learning sponsored five faculty/professional staff member to attend the Virtual Instructors Certification Program at Texas A&M University.

The participants were selected to participate in the program because of their involvement in the Prairie View A&M University's 21st Century Distance Learning Program. All participants completed the program and received a certificate for online course management.

The first phase of the course began with participation in a three-week online component, which included an introduction to the basics of an online module and computerized interactive dialogue of various issues related to web-based construction and course conversion. The second phase involved a four-day, face-to-face session. During this session, participants developed an online course of their choice and presented their work to the group on the last day of the phase where modifications took place for effective online delivery.

## Faculty Staff News

### PUBLISHER

Dr. Charles A. Hines

### EDITOR

Bryan H. Barrows, III

*"Making A Difference"*

Send Monthly Newsletter  
Inquiries to:

OFFICE OF THE PRESIDENT

P.O. Box 188

Prairie View, Texas 77446

(409)857-2117

Fax: (409)857-2433

## Schedule of Alumni Homecoming Activities

**Nov. 4-6** Class of 1949, 50th Year Golden Endowed Anniversary, Crowne Plaza Hotel, 12801 NW Freeway 290 @ Pinemont, Houston, Tx.,

**Nov. 4** Homecoming Golf Tournament, Links Course, Hockley, Tx. (Skins Game) 9:00 a.m., and Friday, Nov. 5 and tee off between 9:00 a.m. and 11:00 a.m. Contact: Dr. Mary Hawkins, Pres. PVAMU Local Alumni Chapter (409) 857-3425.

**Nov. 5** President's Reception for PVAMU National Alumni Assoc. Executive Board of Directors and Alumni Chapter Presidents (Carden - Waller Extension Building), 11:00 a.m. - 12:45 p.m.



*Opal Smith*  
National Alumni  
Association President

PVAMU National Alumni Association General Alumni Meeting Carden-Waller Extension Building, 1:00 p.m.

Alumni participation in College of Engineering Gala, Doubletree Hotel in downtown Houston, 6:30 p.m. Contact: Ann Sorsby or Dr. Milton Bryant at (409) 857-4200.

Alumni Banquet (Mr./Mrs. Homecoming), Friday, Nov. 5, 7:30 p.m. Memorial Student Center.

Alumni Dance, sponsored by the PVAMU Local Alumni Chapter, 10:30 p.m., Newman Center, Prairie View, Texas.



*Hortense Kilpatrick*  
Alumni Affairs Director

**Nov. 6** Homecoming Parade, Saturday, PVAMU National Alumni Association Car Entry.

Half-time Donor Presentation by PVAMU Nat. Alumni Association and Alumni Chapters (Homecoming Game: Blackshear Stadium).

Class of 1953, Annual Membership Meeting and Buffet, Alumni Hall (Athletic Dining Room), 5:30 p.m. - 7:00 p.m.

# PVAMU News Briefs

## *Biology Department Gets Burrough-Wellcome Visiting Professorship*

The Biology Department has been successful in applying for support by the Burroughs Wellcome Fund of the American Society for Microbiology to bring Dr. Debra Murray to PVAMU as a "visiting professor".

The visiting professor is to come to PVAMU February 21 and 22, of the year 2000. Professor Murray will speak at PV, 4:00 p.m. in Rm. 122, Harrington Science Building. She will also lecture at Blinn College February 23 and 24 as a part of the cooperative funding agreement.

Dr. Murray is a research biologist at the Veterans Administration Medical Center (Dallas) and is an adjunct professor of the University of Texas Southwest Medical School (Dallas).

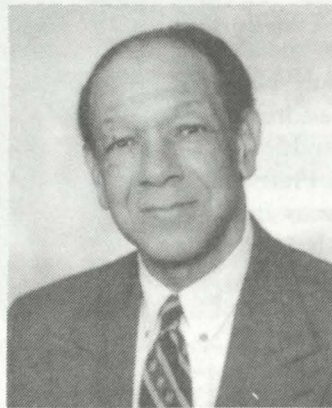
## *TI Awards \$356K to Electrical Engineering Dept.*

The Electrical Engineering Department of the College of Engineering has been awarded \$356,638 over a period of three years by Texas Instruments, Inc. The funds were awarded to "Establish an Analog Mixed Signal-Based Curriculum with Emphasis in Design and Testing Techniques at Prairie View A&M University".

Principal investigator for the effort, Dr. Cajetan M. Akujuobi, associate professor of Electrical Engineering, received the award presented by TI officials in a ceremony held in the Dean's Conference Room (C.L. Wilson Bldg.) September 2.

## *"African American Composers Before 1900" - Dr. Lucius Wyatt Presents Lecture*

The National Association of Negro Musicians presented a lecture by Dr. Lucius Wyatt, professor of Music, at its annual convention August 5, in Houston. Wyatt's presentation was entitled "African American Composers Before 1900".



*Dr. Lucius Wyatt*

## *College of Engineering Hosts National AMIE Conference*

The PVAMU College of Engineering hosted the Advancing Minorities Interest in Engineering (AMIE) Conference Thursday, September 9, on campus. Over five hundred participants from Fortune 250 corporations, government agencies and invited guests were in attendance.

The conference is designed to bring together corporations, government agencies and academic to discuss and develop innovative diversity solutions for the engineering and technology workforce.

Dean, Dr. Milton Bryant, commented, "We are especially honored to host this year's conference, as we close 1999 and move to the year 2000, with an approach to diversity benefitting the new millennium."

## *NSF Graduate Research Fellowship program*

The National Science Foundation (NSF) will award approximately 900 new Graduate Research Fellowships to support graduate study in science, mathematics, and engineering. The NSF contracts with Oak Ridge Associated Universities (ORAU) to provide the support services for this prestigious fellowship program.

Announcement materials for the 2000 competition and information regarding electronic retrieval of application materials are enclosed. These include: Program Announcement; Institutional Request for Application Materials form; instructions for FastLane; and the publicity poster. For additional information, contact the NSF Graduate Research Fellowship Program, ORAU, P.O. Box 3010, Oak Ridge, TN 37831-3010, phone (423) 241-4300, electronic mail [nsfgrfp@orau.gov](mailto:nsfgrfp@orau.gov) or fax (423) 241-4513.

The deadline for applying in the 2000 competition is November 4, 1999. Awards will be announced in March 2000.

Each three-year fellowship provides a stipend of \$15,000 for 12-month tenure, and a cost-of-education allowance of \$10,500 per tenure year. Graduate Research Fellowships are awarded on the basis of merit. Disciplinary panels of scientists, mathematicians, and engineers convened for NSF by ORAU will review each applicant's qualifications.

## *University Holidays*

Thanksgiving	Nov. 25-26
Christmas/New years	Dec. 23-31
ML King Jr. Day	January 17
Memorial Day	May 29
Emancipation Day	June 19
U.S. Independence Day	July 4

# PVAMU News Briefs

## *PVAMU Contracts with UTMB*

Prairie View A&M University has entered a new fourteen month contract with the University of Texas Medical Branch at Galveston. The contract calls for UTMB to assist PVAMU's College of Nursing and its newly-established Family Nurse Practitioner Master's Degree Program.

UTMB will augment PVAMU's resources in the areas of leadership, faculty development and training. A \$5 million grant from the Kellogg Foundation provided funding to allow Prairie View A&M to offer the program. Dr. Linda Rounds, associate professor at UTMB, assisted PVAMU in developing the program and obtaining the grant. The program will continue to operate as a PVAMU program and graduates will receive PVAMU degrees.

## *PVAMU to Mentor Jones Intermediate Students*

The Health and Human Performance Department (HUPF), chaired by Dr. Mary V. White, has entered into an agreement with Jones Intermediate School to implement a mentor program effective Fall '99. New principal, Ms. Amy Coleman, of Waller ISD, who is also a PVAMU alum, is mentoring the program.

PVAMU students will share and discuss their experiences with other students and the program administrator, Dr. Reuben Wright while getting useful hands-on experience.

## *Social Work Domestic Violence Training Program*

Vice president for Research and Development, Dr. Willie F. Trotty, has announced that a "social work Domestic Violence Training Program" has been funded as part of an initiative to address domestic violence announced by Health and Human Services secretary, Donna E. Shalala. Prairie View A&M will receive \$100,000 per year for three years in order to train professionals from various ethnic and cultural backgrounds.

Secretary Shalala announced a total of \$1.25 million in grants nationally at the "Next Millennium" Domestic Violence Conference held recently in Chicago. It is hoped that the grants will build on community efforts to provide information and raise awareness, improve access to health care services and offer needed training on domestic violence issues.

Drs. Abdoulaye Bah, Ronald Briggs and Karen Douglas, Prairie View A&M University faculty members, were instrumental in the receipt of the funds by the university.

## *Campus Telephone Office*

DEPARTMENTAL NAME CHANGES - Several departments have undergone name changes since publication of the last telephone directory in October 1998. It is essential that we include any updates in the new directory green pages and report any corrections/revisions to the telephone at X-4320. Time is of the essence! Please turn in any updates immediately as the directory is to go to a contract printer in about 30-40 days.

## *PVAMU Presenters at 4th National Conference on Family & Community Violence Prevention*

**Saturday, October 16**

8:30 a.m. - Concurrent Workshops  
Workshop D:

"The New Juvenile Justice Laws:  
Implications for Scholars and  
Practitioners (Briarpark 1)  
Keith Branch, J.D.

Harris County Juvenile Probation  
Department

H. Elaine Rodney, Ph.D.

Clete Snell, Ph.D.

Edward Schauer, Ph.D.

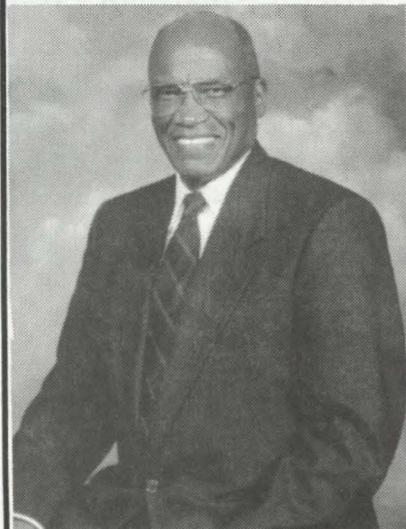
School of Juvenile Justice

Prairie View A&M University

**Sunday, October 17**

4:30 p.m. - Plenary Session (Grand  
Pavilion)

**Introduction of Speaker**



*Charles A. Hines, Ph.D.*

*PVAMU President*

*Prairie View A&M University*

Speaker:

**Honorable Sheila Jackson Lee**

**Member of Congress**

**18th Congressional**

**District of Texas**

# Graves named new Chancellor of Texas A&M

Continued from page 1

pare new senior government officials for executive leadership positions.

Then, in 1989, Graves became assistant to the chairman of the Joint Chiefs of Staff. As personal assistant to Adm. William Crowe, and later, to Gen. Colin Powell, Graves played a decision-making role during a very contentious time in the global arena. He participated in Presidential Cabinet meetings on national security issues. He was involved in the Malta and Helsinki Presidential Summits. And he served alongside Secretary of State James Baker during negotiations regarding such issues as arms control, German reunification, European security arrangements, Arab-Israeli peace initiatives and the diplomatic efforts of Operation Desert Storm.

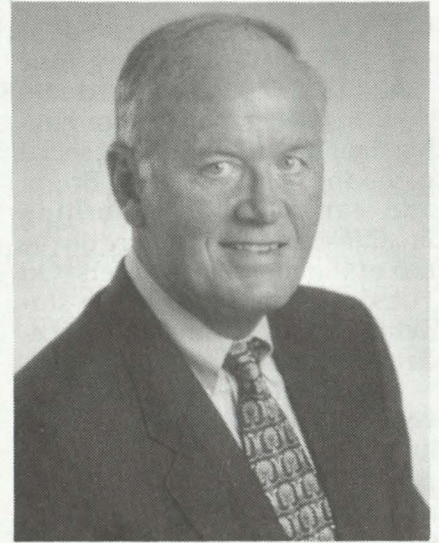
In 1991, Graves accepted the superintendent position at the U.S. Military Academy. During his tenure as superintendent, he was in charge of 4,000 students and was military commander of a supporting community of approximately 12,000 employees and family mem-

bers. Graves used his position to stress such values as leadership, character and public service. He updated the curriculum, implemented a vast computer information network and administered an annual budget of \$300 million.

Graves' tenure at West Point was marked by an emphasis on leadership in a mixed-gender environment and by his public affairs prowess. He retired for the academy in June 1996.

Graves and his wife have two children and five grandchildren.

For more information, contact A&M System Communications Office, at (409)862-2814. E-mail: [syscomm@tamu.edu](mailto:syscomm@tamu.edu).



Howard D. Graves

RETENTION 2000

## *Student Self Empowerment: Learning From the Past – Planning for the Future !*

University of Maryland  
Wednesday, November 17, 1999  
8:00 A.M. to 4:00 P.M.



### *Call for Papers*

#### • GUIDELINES FOR PROPOSAL •

We are interested in programs that will foster interactive participation from the audience. Prospective presenters are encouraged to include colleagues and students of varied ethnic, cultural and racial backgrounds. You will have the option of making an individual presentation, or having your paper grouped with two or three of your colleagues dealing with similar issues to reflect a diversity of opinion. Please indicate your preference.

#### • PROCEDURE •

Please submit four copies of a 200-word description (typed, double space), a 50-word camera ready abstract for the printed program, and a copy of your resume.

Deadline for submission of "Call for Papers" information: **Monday, September 13, 1999**

#### Registration Information Forthcoming

*This year's conference will showcase presentations from secondary schools, college students, university faculty and staff, and community experts.*

#### • Relevant Topics •

- Student-leaders Influencing Retention
- Communities Uniting for Youth
- Motivation and Retention
- Technology and its Impact on Retention
- Successful Retention Models
- Retention Strategies that work
- The Future of Affirmative Action
- Student Retention and Ethnicity
- Relevant Issues for the Black and Latino Male
- Administrators' Role in Retention
- Faculty Involvement in Retention Efforts

#### • PROPOSALS SHOULD BE SUBMITTED TO •

Ms. Dottie Bass  
University of Maryland  
Office of Multi-Ethnic Student Education  
1101 Hornbake Library, College Park, MD 20742  
Telephone: (301) 405-5618/ 5616

# KPVU-FM RADIOTHON

## October 15-24

## 91.3 FM

### (409)857-4511

# Pre-College Enrichment Institute (PCI) Summer Program completes 16th Annual Institute

*Dr. Bennie Richards*

The students arrived at PVAMU on Sunday, June 13, 1999 and checked into their residence hall before having their first meal and first social gathering of the program. Bright and early Monday morning breakfast and testing were on the top of the menu for starters. On Tuesday, June 15, 1999 the students began their first day of academic classes.

The PCI consisted of 121 diverse and academically talented high school students. PCI is composed of two-week workshops and the primary objectives are to encourage, explore, and enhance students' interest by broadening their career knowledge in the employment market in several disciplines. The Institute consisted of five (5) academic components. Architecture Enrichment Concepts (ARTEC) was provided to raise student interest in architecture as a profession. Business for Academic and Scholarly Inclined Students (BASIS) was designed for students interested in college level study in one of the business disciplines. Helping Establish Leadership in the Professions (HELP) was developed for students interested in the liberal arts to include social work, education, sociology, human sciences, psychology, journalism, law, law enforcement and other helping professions. Minority Introduction to Engineering & Science (MITES) was designed for highly competitive students exploring careers in engineering, engineering technology, computer science or mathematics. Science Careers Opportunities Program (SCOPE) was provided to highly talented students interested in becoming a health professional such as physician, dentist, veterinarian, nurse, physical

therapist, podiatrist or optometrist. Professional Skills was designed to teach work ethics, work behavior and professional presentation. Special Projects were designed for each of the professional interest areas.

The PCI program not only broadened students interest and knowledge academically, it provided an array of social, cultural events, activities (i.e. talent show, game night) and field trips which were both social and professional. These activities and events were exciting, challenging, inspiring and uplifting.

SCOPE and HELP students were treated to a field trip to PVA&MU's very own College of Nursing located in Houston's medical center. The PCI students were greeted by Dr. Lillian Bernard, interim Dean and toured the nursing facilities. Also, Dr. Bennie Richards presented the PCI students with an array of community business leaders as guest speakers. They were Mrs. Vassie L. Cook, Administrative Supervisor in the City of Houston Department of Housing and Community Development; Mrs. Vickie L. McBride, Management Analyst in the Strategic Planning Division of the City of Houston Department of Housing and Community Development; Mrs. Regina Young, Houston Police Department, Recruiting Division/Background Investigator; and Dr. Donald Conner, Executive Director, Hope Academy Contemporary Learning Center: A Texas Education Agency Approved Charter School for Emotionally and Mentally Impaired Students. Their presentations gave all of the students food for thought as they went back to their individual high schools in the fall. The other three workshops took

their major field trips to such places as the Houston Museum of Natural Science (MITES), architectural firms (ARTEC), and the Small Business Administration (BASIS).

A field trip to Astro World (Houston, Tx) released the students stored-up energy. Fun Night, a farewell dance was held Friday, June 25, 1999 and a farewell Awards Banquet was held Saturday, June 26, 1999 in the Alumni Hall West Wing. The Marriott Service prepared the delicious food. The Banquet was well attended with 370 parents, family and friends. During the Awards Banquet, the following responses were made: BASIS, Rashaad Pelt; HELP, Sean Samuel and Donald English; MITE, Latonya Young and Jada Saveat; SCOPE, Rakesha Jones; and ARTEC, Christina Oropeza.

The guest speaker for the morning was one of PVA&MU's illustrious graduates, Mr. Isodore Thomas Davis, Manager of Raytheon Missile System, Engineering University Relations. Mr. Davis' presentation was fulfilling and inspiring for our students.

The PCI program is under the direction of Mr. J. E. Pennywell, Director of Career Services; Mr. Ronald Jones, Vice President of Student and Enrollment Services; Mr. Herb Thomas, Placement Coordinator; Ms. Michelle Boardingham, Administrative Assistant; and including Mrs. Kim Spacek, Staff Assistant. Thanks to the PCI summer Faculty Staff Dr. Bennie Richards, Business Manager, Mr. Patrick Briggs, Headmaster Teacher, counselors and teachers. It was a fun two weeks and we are looking forward to the new millennium PCI program.

•••

# Youth Enrolled in Juvenile Justice Alternative Education Program Receive University Mentoring: A Program For Kids' Sakes

By Edward J. Schauer, Ph.D. and William Ross, Ed.D.

**A**frican-American and Hispanic/Latino children attending Harris County Juvenile Justice Alternative Education Programs, ages 12 to 15, are those targeted for service through "Project Youth Connect".

This is a mentoring and advocacy program sponsored by the Texas Juvenile Crime Prevention Center in the School of Juvenile Justice at Prairie View A&M University. This University project is being implemented in collabora-

tion with the Harris County Juvenile Justice Alternative Education Program and the Center of Substance Abuse Prevention (CSAP), Washington, D.C. Chosen as one of fifteen sites nationally, Project youth Connect is funded for three years through a grant in excess of one million dollars from CSAP, with the possibility that the project will be considered for an additional two years of funding.

The overriding goal of the project is to prevent or reduce

alcohol, tobacco, and other drug usage, or to delay the onset of these personal and social maladies. Program objectives are to improve school bonding, academic performance, life management skills, family bonding, and family functioning.

For more information, please contact Dr. William Ross at (281) 257-0050, or [William\\_Ross@pvamu.edu](mailto:William_Ross@pvamu.edu). Many volunteer mentors are needed.

•••

## PRAIRIE VIEW A&M UNIVERSITY FOOTBALL 1999 Schedule

Date	Opponent	Stadium	Location	Time
Oct. 2	*Granbling St. (State Fair Classic)	Cotton Bown	Dallas, Tx	7 p.m.
Oct. 9	Alcorn St.	Jack Spinks	Lorman, MS	1:30 p.m.
Oct. 23	Panhandle St	Blackshear Field	PRAIRIE VIEW	2 p.m.
Oct. 30	Mississippi Val.	Cardinal Stadium	Beaumont, Tx	7 p.m.
Nov. 6	Arkansas-Pine Bluff	Blackshear Field	PRAIRIE VIEW	2 p.m.
Nov. 13	*Alabama State	Cramton Bowl	Montgomery, AL	1 p.m.

\*Southwestern Athletic Conference (SWAC) games. Times listed are local times in host cities. For more information call (409) 857-2127.

**Charter Member of the  
Southwestern Athletic Conference**

FBSchedPreview.wpd/Revised: August 6, 1999

## USDA/1890 Task Force to Meet at PVA&MU

**P**rairie View A&M University will host the next USDA/1890 Task Force Meeting, on October 12-14, 1999 here at Prairie View A&M University - J. B. Coleman Library.

We invite you to participate at the Reception and/or Luncheon. The Reception will be held on Tuesday, October 12 at 6:00 p.m. in the Terrance Room at the Sheraton North Houston Hotel, 15700 John F. Kennedy Blvd., Houston, TX and the Luncheon is on Wednesday, October 13 at 12 noon in the West Wing - Alumni Hall at Prairie View A&M University.

Please RSVP on or before October 1, 1999 to: Dr. Alfred L. Parks, Associate Dean and Research Director; Cooperative Agricultural Research Center; P.O. Box 4079; Prairie View, TX 77446.

Should you have further questions, call at (409) 857-2030; FAX: (409) 857-2325; or refer questions to Ms. Elsie Easley at the same number.



# Prairie View A&M University Forensic Society to host "Super Tournament On The Hill"

The Prairie View A&M University Forensic Society is hosting the First Annual "Super Tournament On The Hill", HBCU Tournament on November 12-13, 1999. You are especially invited to what we aspire to become an annual event on "The Hill".

We need your support as an HBCU to make this event an overwhelming success. The tournament will be held on the beautiful campus of yours truly, Prairie View A&M University, which has beautiful landscaping, historical buildings and of course warm and friendly Panthers!

We will offer 11 events: Declamation, Informative and Persuasive Speaking, Prose, Poetry, Dramatic Interpretation and Duo-Dramatic, After-Dinner Speaking, Extemp, Impromptu, and Lincoln-Douglas Debate.

We will adhere to the American Forensic Association (AFA) rules and regulations for each event. Each i.e. will go 2 rounds followed by elimination rounds except for Debate. (Number of rounds will of course vary by the number of entries per event).

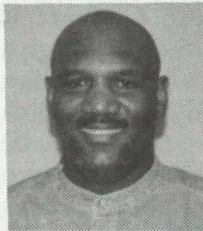
Individual entry cost will be \$5.00 per event, Duo will be \$10.00 per team, and Lincoln Douglas debate will be \$7.00 per debater. The pentathlon category will be offered to any student who enters 5 events and earns top awards per individual entry. (Students in this category can enter public speaking, oral interpretation, and LD events). Double and Triple Entering in events will be allowed. Cash prizes and awards will be given to 1st-3rd place winners. The Top Lincoln Douglas Debate Award will be given as well. Overall Sweepstakes will be awarded to the top schools as well as Individual Sweepstakes to the top schools entered in i.e. only.

Will you join us as one of our own special HBCU schools and participate in this "Super Tournament On The Hill"? Please respond by Monday, November 8, 1999 by 6:00 p.m. You may fax your entries at (409) 857-2309 or contact me at (713) 666-3247 or call (409) 857-2229 and leave your entries on the voice mail.

I eagerly await your response.

Collegiately yours,

Speech Professor  
Jacqueline K. Davis,  
PVAMU Forensic  
Director/Coach



## For Your Wellness

Dr. Reuben L. Wright  
Health and Human Performance  
Department

### Do You Know The Warning Signs For:

#### HEART ATTACK

\* Uncomfortable pressure, fullness, squeezing or pain in the center of the chest last more than a few minutes;  
\* Pain spreading to the shoulders, neck, or arms;  
\* chest discomfort with lightheadedness, fainting, sweating, nausea, or shortness of breath.

#### STROKE

\* Sudden weakness or numbness of the face, arm, or leg on one side of the body;  
\* Sudden dimness or loss of vision, particularly in one eye;  
\* Loss of speech, or

trouble talking or understanding speech;  
\* Sudden, severe headaches with no apparent cause;  
\* Unexplained dizziness, unsteadiness, or sudden falls, especially along with any of the previous systems.  
*Note: Not all of these signs occur in every attack. If you notice one or more of these signs, do not wait. Get medical help immediately.*

Send questions, comments or suggestions to: [reuben\\_wright@pvamu.edu](mailto:reuben_wright@pvamu.edu)  
Source: American Heart Assn.

...

## NASULGC Preliminary Program

National Association of State Universities  
and Land-Grant Colleges

112th Annual Meeting

San Francisco Marriott

San Francisco, California

November 8-10, 1999

REGISTER ON-LINE AT:

[WWW.NASULGC.ORG/AM99](http://WWW.NASULGC.ORG/AM99)