

Prairie View A&M University

Digital Commons @PVAMU

Faculty & Staff News

Academic Affairs Collections

11-1998

Faculty & Staff News - November 1998

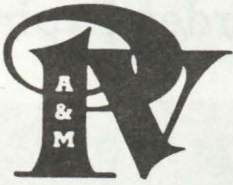
Prairie View A&M University

Follow this and additional works at: <https://digitalcommons.pvamu.edu/faculty-and-staff-news>

Recommended Citation

Prairie View A&M University. (1998). Faculty & Staff News - November 1998., *Vol. III No. 2* Retrieved from <https://digitalcommons.pvamu.edu/faculty-and-staff-news/4>

This Book is brought to you for free and open access by the Academic Affairs Collections at Digital Commons @PVAMU. It has been accepted for inclusion in Faculty & Staff News by an authorized administrator of Digital Commons @PVAMU. For more information, please contact hvkoshy@pvamu.edu.



FACULTY/STAFF N • E • W • S

A Monthly Publication for Prairie View A&M University
"A Member of the Texas A&M University System"

VOLUME 3 NUMBER 2

NOVEMBER, 1998

Gov. Bill Daniel Gives Another Major Livestock Donation to Farm at Prairie View A&M University

By BRYAN H. BARROWS
"Doing for others is the best thing that one can live for," is a common theme and is highly visible in the life of 83-year old Governor Bill Daniel of Liberty. It is because of his philanthropy and caring that institutions such as Prairie View A&M University have sought to honor this sage of East Texas and his late wife **Vara Faye Martin Daniel**. In fact, Friday, October 30th was dedicated "Governor Bill Daniel Day" at the land grant institution where the sixth-generation Texas statesman presented another gift of his prime cattle bearing his name and brand.

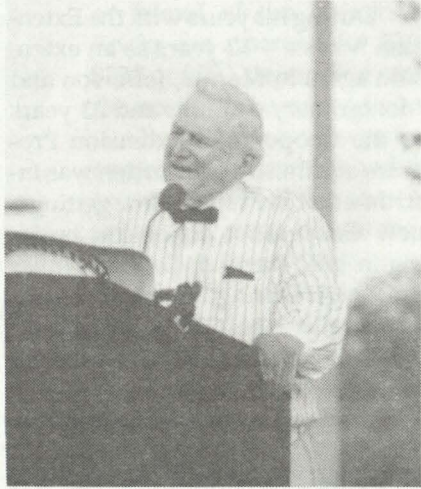
The gift of 167 **Big Red Bill Daniel BREED** of his nationally acclaimed livestock is significant because it is one of the premier bloodlines in the U.S. cattle industry. Gov. Daniel has repeatedly given his award-winning cattle to PVAMU in the hope of interesting a whole new genera-

tion in making careers in farming and ranching.

PVAMU honored Gov. Daniel for his continuing commitment to agriculture, farming and ranching over the years and for his efforts on behalf of the university.

William Partlow Daniel is a descendant of pioneering Texans and was born in Liberty County in 1915, to Hon. M.P. Daniel and Nannie Parlow Daniel. Early in life, he worked as a cowboy, farmer, blacksmith, haymaker, and a teaming contractor before receiving his Juris Doctor Degree from Baylor University.

He was elected Liberty County Prosecuting Attorney (in 1942) and to the Texas Legislature (1949-1954). One of his premier honors is having been named Governor of The Territory of Guam for four years by his friend Pres. John F. Kennedy. He was also continued in the



Gov. Bill Daniel

position by Pres. Lyndon B. Johnson and the U.S. Interior and State Departments. For many years, he has served as Texas' Ambassador-at-Large.

During the 1950's when famed actor John Wayne started to make the movie epic THE ALAMO, he enlisted his friend Governor Daniel as his attorney, historian, coordinator and co-producer. In fact, Daniel even acted three different parts in the movie.

Bill Daniel proved to be an innovator on Guam as he prodded the development of an unheard-of tourist industry on the island. Accordingly, he is highly regarded for the economic, social, political and educational success he brought Guam in his tenure there.

To say that Bill Daniel loves



Former Cooperative Extension Head Hoover Carden Expires

By GLORIA MOSBY

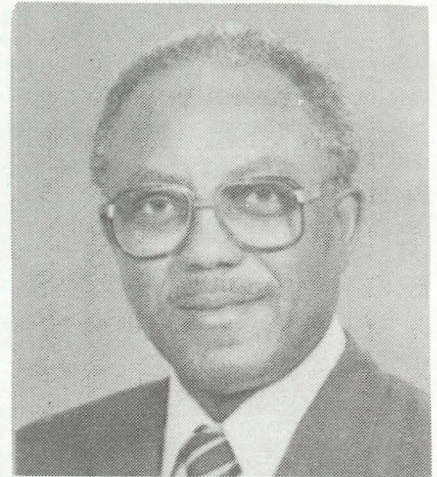
Hoover Carden, former Cooperative Extension Program (CEP) administrator at Prairie View A&M University, passed September 21. Carden, a pioneer for the CEP at PVAMU, retired as administrator on June 30, 1995, after serving the Cooperative Extension Program since 1972. He helped many individuals, youth and families during his tenure.

During his years with the Extension Service -- 12 years as an extension agent in Marion, Jefferson and Montgomery counties and 23 years as the Cooperative Extension Program administrator. Carden was instrumental in Prairie View getting a new Cooperative Extension building in 1992 (named: Carden-Waller Building). During his tenure as administrator, the CEP's budget expanded from \$327,000 in 1972 to \$3 million when he retired.

Carden also initiated programs

to stem the tide of declining land ownership by African Americans. He spearheaded improvements at the H.S. Estelle 4-H & Youth Camp in Huntsville, Texas which teaches leadership and citizenship skills. The camp accommodates up to 125 young people on a weekly basis during the summer months.

Because his concern for such issues as crime; teen pregnancy; drug abuse; and sexually transmitted diseases (such as AIDS), Carden developed cooperative health initiatives which provided information and programs geared to problems of urban and rural areas. These initiatives are being carried forth today in the Cooperative Extension Program's Health Project located in



Hoover Carden

the PVAMU College of Nursing in the heart of the Houston Medical Center.

The Charles Gilpin Players Win!

The Charles Gilpin Players of Prairie View A&M University have truly made winning an annual theatrical tradition and this year is no different. At the Texas State Festival II of the Kennedy Center American College Theater Festival, October 14-17, the Gilpin Players won awards in ten theatrical categories.

The Gilpins, performing the play 'Bury the Dead', by Irwin Shaw, were pitted against six other theatrical companies all vying for top honors. As such, the PVAMU team won for "Excellence in Makeup"; "Excellence in Sound Design"; "Excellence in Crew Leadership"; "Excellence in Stage Management"; "Excellence in Ensemble Acting" and the prestigious "Critic's Choice Award for Best Play". Two PVAMU actors, Taryne Metcalf and Broderick Jones, were exalted above all others as they were nominated for the celebrated "Irene Ryan Scholarship for Acting".

As a result of an outstanding performance by the ensemble cast of 'Bury the Dead', the Charles Gilpin

Players will be considered for advancement to the KC/ACTF Regional Festival. The Regional Festival will be held in Spring, 1999, in Denton, Texas.

The Charles Gilpin Players are under the director of famed director, C. Lee Turner, who has taken numerous casts to the area, regional and the national festival (at the Kennedy Center for the Performing Arts, Washington, D.C.).

Of the Gilpin Players, C. Lee Turner says, "We look forward to meeting new challenges with the continued help and support of the Prairie View family. We thank you sincerely..."

Faculty Staff News

PUBLISHER

Dr. Charles A. Hines

EDITOR

Bryan H. Barrows, III

"Making A Difference"

Send Monthly Newsletter

Inquiries to:

OFFICE OF THE

PRESIDENT

P.O. Box 188

Prairie View, Texas 77446

(409)857-2117

Fax: (409)857-2433

*Have A Happy
& Safe
Thanksgiving*

Alumni Wall Park Makes Strides

For many at Prairie View A&M University, the concept of an Alumni Wall Park is much more than a "pipe dream". The Alumni Wall Park is to be a series of concentric circles with brick configurations located at the entrance of this university.

Friday, October 9, a group of alums, employees, students and VIPs participated in a ground-breaking ceremony marking the beginning of the Alumni Wall Park Project. Earlier that morning, PVAMU honored current participants in the project with a reception and an award program marking the occasion.

According to Dr. Hortense Kilpatrick, assis-



Dr. Sabouni displays the 1st Alumni Wall Brick at the ground-breaking ceremony

tant director of Institutional Development and director of Alumni Affairs, "The park will honor distinguished alumni and friends who are committed to supporting the university."

Participants in the Alumni Park Wall Project purchase a brick which is then enscribed with the name of an alumnus or friend of the university. Bricks are reserved for \$100, \$250 or \$500, depending upon the needs of the supporter.

Proceeds from the project supports scholarships and the greatest needs of this state-assisted university. For more information on participating in the Alumni Park Wall Project, call Dr. Hortense Kilpatrick at (409) 857-2810.

New Student Park Dedicated During Homecoming

Friday, October 9, students, faculty, alumni and friends gathered at the newly completed 'Student Park' for a dedication ceremony in the midst of Homecoming.

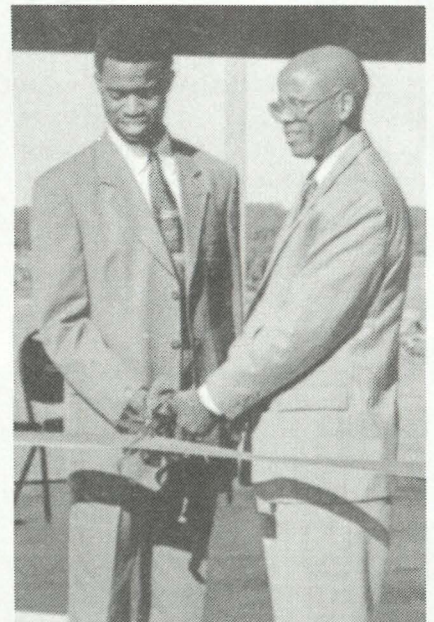
The new park has two pavilions, picnic tables, barbecue pits; restrooms and lighted archways. Stage accommodations have been figured into the overall design so that productions and concerts can be held at the pavilions. Plans for the park were done by students from the School of Architecture.

Dean of the PVAMU School of Architecture, Dr. Ikhlas Sabouni, said, "We are pleased with the new student park and we hope that it will serve our students well. Also, we are pleased to have been able to reduce the overall cost of the Student Park Project."

Student Activities Vice President Ron Jones, representing Dr. Charles A. Hines, commented, "Students, this is your park both in terms of the financing and the management of it."

It is anticipated that the facility will be expanded later to include an open air amphitheater for concerts and programs that students may wish to conduct. The facility overlooks the north end of the campus and is located across from the University Village North privatized housing project which opened this Fall.

Texas A&M University System Vice Chancellor for Business Services, Tom Kale, stated, "Chancellor Barry Thompson is very proud of the job that the students, faculty and administration of Prairie View



A&M University have done in making this new student park a reality."

Prairie View A&M University Welcomes a New Member of the Family

By BRIDGETT L. MCGOWEN

Information outreach Specialist, Department of Student and Enrollment Services



The sun is just emerging beyond the horizon as Nicole Bradford strolls confidently with briefcase in hand, eager to start a new day of work in her new position at Prairie View A&M University.

As Manager of Alcohol, Other Drugs and Violence Prevention Program, Bradford will collaborate with the Prairie View A&M University Department of Public Safety and other university and community components to impact the university zero tolerance policy.

The Austin native looks forward to being creative with this new position in the Department of Student and Enrollment Services, determined to target and change the faces of drug usage, sexual assault, and other violence among area youth and young adults by developing and implementing intervention programs on the college and community levels.

"I want to get actively involved with the community and university to become a role model," began Bradford. "There are so many youth and young adults who need support and motivation and I want to do my part."

A Grambling State University alumna, Bradford graduated Magna Cum Laude with a Bachelor of Science in Criminal Justice. She continued her education as a tiger and received her Master of Science in Criminal Justice. Currently pursuing a doctorate in Higher Education Administration at Texas Southern University with a topic geared toward the retention of African American males in institutions of higher learning, Bradford anticipates graduation in the year 2000.

Before coming to Prairie View

A&M University Bradford worked with education liaison, Leonel Castillo in the Houston mayor's office, assisting in coordinating the 1998 Educational Summit and developing after-school programs for teens during those crucial hours between 3:00 PM and 6:00 PM. She went on to gain further experience as an assistant school administrator at a Houston area alternative high school, a promotion she received after three short months as a teacher there. In addition, she taught criminal justice courses at her alma mater and Wharton Junior College.

In addition to developing comprehensive awareness education and prevention programs, Bradford will assist the Vice President for Student

and Enrollment Services, Ronald Jones, with proposals for external funding.

Bradford, the youngest of six siblings, resides in Houston with her 13-month-old daughter and inspiration, Kristen Nicole Bradford. She has future plans of running for a political office in Waller County while continuing to provide support to the community's youth.

An enthusiastic Bradford is pleased with professor of geography, Dr. William Brown and Jones' decision to afford her the opportunity to prove herself to the department and the university. Ultimately, she is grateful to God for her new position in the land of the royal purple and old gold.

DONATION Continued from page 1

ranching and cattle is the same as saying that we all love to breathe air. During his last visit to PVAMU to deliver another herd of his blue-ribbon stock, he stayed over night...sleeping on the ground near the herd in order to accustom them to their new surroundings.

As much as Gov. Daniel loves ranching and farming, he cares about people even more resoundingly. He says, "Too many of our young people have been mesmerized by drugs and other evils into a life of hopelessness, and I believe that gifts and scholarships to universities like this can help some of our young people turn their lives around."

His love of people has caused

him to establish a variety of scholarships at numerous institutions, most notably Prairie View A&M University. He sincerely wants folks to have an opportunity to attend college who really want to go. In fact, he has made a clear effort to help the citizens of Liberty County by establishing a scholarship designed to assist anyone from that area who wants to go to PVAMU to get an education who cannot afford it.

Certainly, Governor Bill Daniel is a legend living in our own time. Perhaps we are all a little better off knowing that there are still people for whom character, patriotism, affection and caring for others still matter.

•••

The University Exchange Bookstore Thanks You for your timely efforts in responding to the Spring Semester book adoptions. With your help, we can acquire needed books and keep student book costs low. Adoptions submitted by deadline are extremely helpful in dealing with wholesalers.

Rush BUYBACK begins 11-10-98 • Bookstore Hours: 8-5 M-F • 8-1 Sat.