

Prairie View A&M University

Digital Commons @PVAMU

Manuscripts

Memorabilia

1970

Miscellaneous Manuscript No. 3 Pages

Prairie View A&M University

Follow this and additional works at: <https://digitalcommons.pvamu.edu/dr-robert-alphonso-henry-manuscripts>

Handwritten musical notation on a single staff, including a treble clef and a key signature of one sharp (F#).

Handwritten musical notation on a single staff, including a treble clef and a key signature of one sharp (F#).

Handwritten musical notation on a single staff, including a bass clef and a key signature of one sharp (F#).

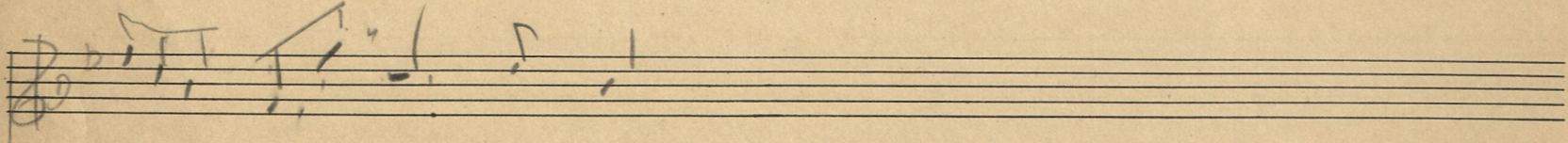
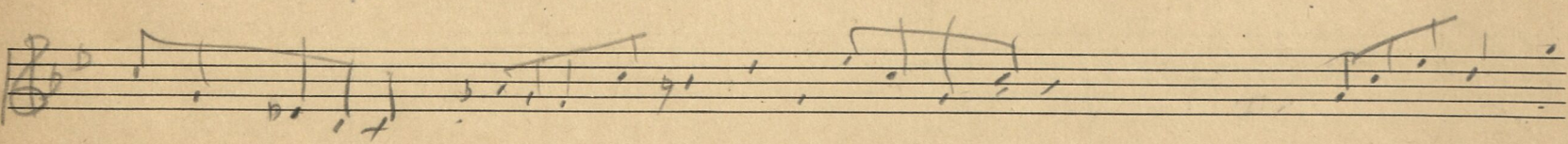
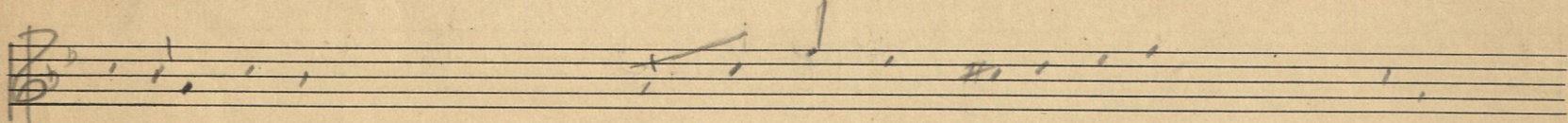
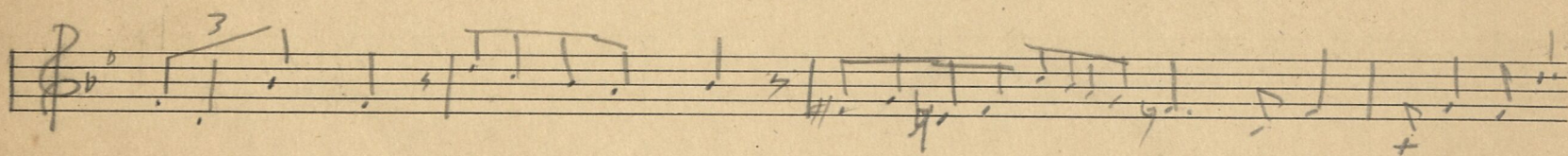
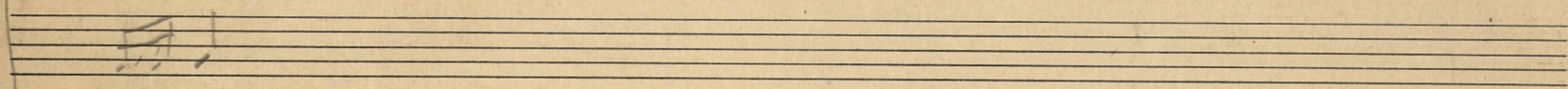
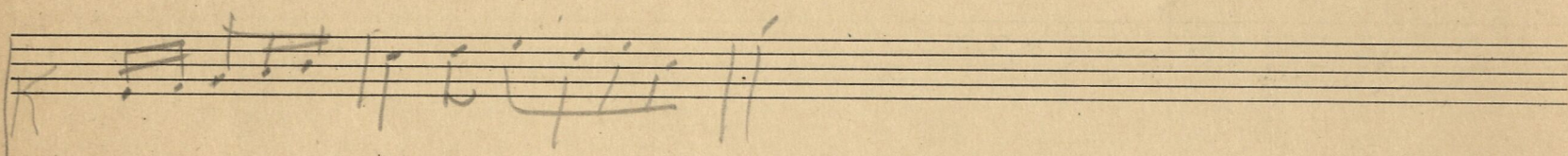
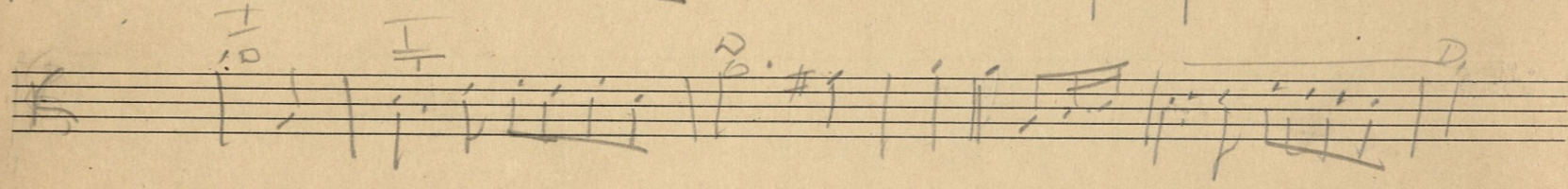
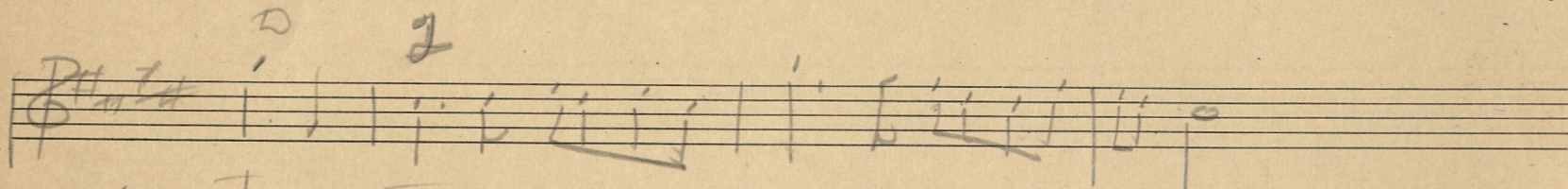
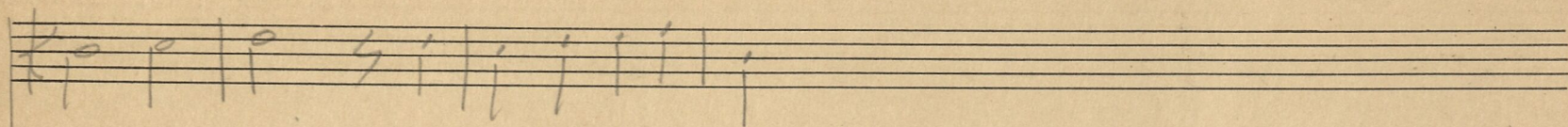
Handwritten musical notation on two staves. The top staff is in treble clef with a key signature of one sharp (F#). The bottom staff is in bass clef with a key signature of one sharp (F#). The music consists of several measures of notes and rests.

Handwritten musical notation on two staves. The top staff is in treble clef with a key signature of one sharp (F#). The bottom staff is in bass clef with a key signature of one sharp (F#). The music consists of several measures of notes and rests.

Handwritten musical notation on two staves. The top staff is in treble clef with a key signature of one sharp (F#). The bottom staff is in bass clef with a key signature of one sharp (F#). The music consists of several measures of notes and rests.

Handwritten musical notation on two staves. The top staff is in treble clef with a key signature of one sharp (F#). The bottom staff is in bass clef with a key signature of one sharp (F#). The music consists of several measures of notes and rests.

Two empty musical staves at the bottom of the page.



Handwritten musical notation on two staves. The top staff is in treble clef and the bottom staff is in bass clef. The music consists of several measures with notes and rests.

Handwritten musical notation on two staves. The top staff is in treble clef and the bottom staff is in bass clef. The key signature changes from one sharp (F#) to two sharps (F# and C#). The music consists of several measures with notes and rests.

Handwritten musical notation on two staves. The top staff is in treble clef and the bottom staff is in bass clef. The music consists of several measures with notes and rests.

Handwritten musical notation on two staves. The top staff is in treble clef and the bottom staff is in bass clef. The music consists of several measures with notes and rests.

Handwritten musical notation on two staves. The top staff is in treble clef and the bottom staff is in bass clef. The music consists of several measures with notes and rests.

Two sets of empty musical staves, one in treble clef and one in bass clef, located at the bottom of the page.

Handwritten musical notation on three staves. Each staff begins with a treble clef and a key signature of one sharp (F#). Above the first two staves, there are handwritten annotations: 'u ~' above the first staff and 'u ~' above the second staff. The notation consists of dotted notes and rests, with some notes having small 'u' or '~' marks above them.

Handwritten musical notation on two staves. The top staff is in treble clef with a key signature of three sharps (F#, C#, G#) and a 3/4 time signature. It features a triplet of eighth notes, followed by a quarter note, and then a series of eighth notes. The bottom staff is in bass clef with the same key signature and time signature, showing a simple bass line.

Handwritten musical notation on two staves. The top staff is in treble clef with a key signature of two sharps (F#, C#) and a 3/4 time signature. It contains a sequence of eighth and quarter notes, some with slurs. The bottom staff is in bass clef with the same key signature and time signature, showing a simple bass line.

Handwritten musical notation on two staves. The top staff is in treble clef with a key signature of two sharps (F#, C#) and a 3/4 time signature. It features a sequence of quarter and eighth notes. The bottom staff is in bass clef with the same key signature and time signature, showing a simple bass line.

Handwritten musical notation on two staves. The top staff is in treble clef with a key signature of two sharps (F#, C#) and a 3/4 time signature. It contains a sequence of eighth and quarter notes, some with slurs. The bottom staff is in bass clef with the same key signature and time signature, showing a simple bass line.

Handwritten musical notation on two staves. The top staff is in treble clef with a key signature of two sharps (F#, C#) and a 3/4 time signature. It contains a sequence of eighth and quarter notes. The bottom staff is in bass clef with the same key signature and time signature, showing a simple bass line.