

Prairie View A&M University

Digital Commons @PVAMU

Faculty & Staff News

Academic Affairs Collections

2-1997

Faculty & Staff News - February 1997

Prairie View A&M University

Follow this and additional works at: <https://digitalcommons.pvamu.edu/faculty-and-staff-news>

Recommended Citation

Prairie View A&M University. (1997). Faculty & Staff News - February 1997., *Vol. 1 No. 5* Retrieved from <https://digitalcommons.pvamu.edu/faculty-and-staff-news/12>

This Book is brought to you for free and open access by the Academic Affairs Collections at Digital Commons @PVAMU. It has been accepted for inclusion in Faculty & Staff News by an authorized administrator of Digital Commons @PVAMU. For more information, please contact hvkoshy@pvamu.edu.



Prairie View Trail Riders

The Prairie View Trail 39 Years of Doing It Right!

Thirty-nine years ago, James Francies had a vision of cowboys and wagons moving across Texas in remembrance of times long gone. James Francies' vision is a reality in the "The Prairie View Trail Riders". Begun in conjunction with Prairie View A&M University through the efforts of President, Dr. E.B. Evans, the PV Trail has as its purpose the promotion of agriculture to interested young Americans, the perpetuation of the ideals and traditions of the "old West", remembering the Negro Western Heritage, promotion of the Houston Livestock Show & Rodeo and the support of educational programs at PVAMU.

Established in 1957, the PV Trail has yearly assembled to recreate historic conditions which allowed the black cowboy to make major contributions to the taming of the Old West. Beginning with an assembling of wagons Saturday, February 1, at Sunnyside Enterprise Park, Sunnyside, Texas, the trail moved to Hempstead Elementary School at 8:15 a.m., on Monday, February 3, for "A Western Adventure Program" providing an oral history. At 1:00 p.m., the PV Trail staged it's annual parade through the PVAMU campus ending at a big tent on the southside of the Billy Nicks Building. During the 1:00 p.m. time slot, an Annual Chili Cookoff was held which benefitted the PVAMU Cheerleaders. The award-winning Charles Gilpin Players provided a western themed performance under the big tent. A camp social was held from 5:00-7:00 p.m., hosted by a wagon boss (west side of the PVAMU Campus near the PV Motel). Tuesday, February 4, the PV Trail moved to Waller's Holleman Elementary at 10:15 a.m., for a "Western Show and Tell".

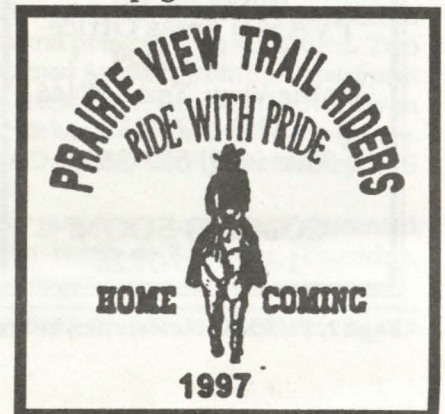
See "Coming Soon!" for a complete list of activities for the PV Trail's trek to the Houston Livestock Show & Rodeo campground at Memorial Park.

Tellabs, Hewlett Packard & Best Tronics Give Lab

E&A '97 Symposium on the Horizon

The College of Engineering and Architecture sponsored its Fifth Annual Engineering & Architecture Symposium (E&A '97) February 6-7, and Tellabs, Hewlett Packard and Best Tronics were leading the way! The E&A Symposium provided an opportunity for students, faculty and professional researchers to exchange ideas and to stimulate the learning process. Over 100 technical papers were expected from universities, industry and government laboratories. Approximately one third of the research papers presented were presented by graduate and undergraduate students. The E&A'97 Symposium was held in Wilson, Gilcrest Engineering Building and Collins Engineering Technology Building. Opening ceremonies were scheduled for Room 103 of the Wilson Building at 8:30 a.m. on February 6. Registration was held in the

See LAB page 3



Black History Month

PVAMU To Participate In University of Iowa Program To Increase International Studies

Prairie View A&M University is set to participate in a new national program to increase international studies classes and study abroad programs at Historically Black Colleges (HBCU) and Universities and Hispanic Institutions (HI) being created by the University of Iowa. The new program called, "The International Curriculum Network", (INCNET) is being developed between the University of Iowa, faculty at ten HBCUs and the Hispanic Association of Colleges and Universities, which has more than one hundred thirty member institutions.

INCNET is funded by a \$400,000 grant from the U.S. Department of Defense National Security Education Program. INCNET is designed to improve international coursework offerings at participating universities, increase the number of minority professors in international studies and to improve the ethnic diversity of future U.S. professionals in the emerging global marketplace.

HBCUs and HIs participating in the program are: Prairie View A&M University; Chicago State University; the University of Texas San Antonio; Alcorn State University; Xavier University; Northeastern Illinois University; Morgan State University; New Mexico Highlands; Southern University Agricultural and Mechanical College and Howard University.

INCNET will sponsor two ten-week programs during the summers of 1997 and 1998. During the first six weeks of each program, faculty members from INCNET institutions will take classes in general international business, politics and visit companies who are engaged in international business, such as Rockwell International, Pioneer Hybrid, Amana Refrigeration and Quaker Oats. The programs will focus on Slavic culture, and the participants will be part of an immersion language program in Russian and Ukrainian. After six weeks of intensive study, participants will travel to Russia and the Ukraine for four weeks of further language training and on-site research.

For further information, please contact Dr. Jewel Prestage, dean of the Benjamin Banneker Honors College at PVAMU, (409) 857-4116. Prestage is a graduate of the University of Iowa at both the masters and doctoral levels.

Prairie View AMU Sets Agreement With Jamaica

Prairie View A&M University and the Government of Jamaica have entered into an agreement which may have influence on the securing of an enhanced food market for South African Boer Goat producers. The agreement, which resulted from months of dialogue between scientists at the PVAMU International Dairy Goat Research Center and key Jamaican scientists aims to introduce South African Boer Goat genetics onto the Island of Jamaica. The primary objective is the improvement of Jamaican goat meat production through cross-breeding.

PVAMU has donated seventy straws of Boer goat semen for use by the Ministry of Agriculture and Mining at its Bodles Research Station, as well as, for selected farmers. Also, the University will donate two Boer bucks at a future date.

According to Horace Clarke, Jamaican Minister of Agriculture and Mining, "...goat meat or 'mutton' has always been quite popular with Jamaicans, especially when served as curried goat. Jamaicans, consume about 2.2 million kg of 'mutton' per year, most of which is imported." He further said, "The introduction of the Boer Goat through a cross-breeding program with local goats will bridge the production gap."

After a concert, a fan rushed up to famed violinist Fritz Kreisler and gushed:

"I'd give my whole life to play as beautifully as you do."

Kreisler replied, "I did."

FACULTY STAFF NEWS

Publisher

Carolyn Bradley-Oliver

Editor

Bryan H. Barrows, III

Assistant to the Editor

Gloria Perez

Photographer

Thomas Godwin

Graphics Director

Shahryar Ardan

Send Monthly Newsletter

Inquiries To:

PVAMU Press Office

P.O. Box 4129

Prairie View, Texas 77446

(409) 857-2117

Fax: (409) 857-3806

COMING SOON!

1-800-787-7826

Hines gives briefing on ACCESS

Dr. Charles A. Hines, president of Prairie View A&M University (PVAMU), presented the initial results on the Academy for Collegiate Excellence and StudentSuccess 1996 in a briefing to State Representative Steve Ogden on Wednesday, January 22nd, 1997. Dr. Hines commended Representative Ogden and Representative Garnet Coleman for having the legislative vision to support the implementation and funding of the ACCESS program. In the words of Dr. Hines, The Academy for Collegiate Excellence and Student Success opens pathways to excellence in educational achievement and personal growth ... ACCESS is an opportunity bridge between high school and college. ACCESS is focused on providing intensive academic enhancement to highly motivated students who do not have "a great paper trail. While these students demonstrate a great desire to receive a college education, their high school GPAs or standardized test scores suggest they are "at risk" to persist to college graduation."

PVAMU officials indicated that the ACCESS pilot program has produced impressive statistics which show the viability and effectiveness of the concept. Students selected for the program attend a seven-week academic, residential summer component which provides instruction in math, reading, composition, critical thinking study skills and movement dynamics. The curriculum is constructivistic and skills based, utilizing heterogenous grouping in an active learning environment. Critical thinking and problem-solving skills are integrated across the curriculum. Outside the classroom, students engage in a variety of activities in the areas of leadership training, personal and social development and cultural enrichment. Students who continue on to PVAMU in the fall take part in the freshman component which reinforces the summer academic program and provides support services to students in non-cognitive areas.

Statistics indicate that 40% of Texas high school graduates are underprepared for college level work and Texas trails the national average of college graduates per capita by 23%. However, the cost of remediating these students has risen sharply and legislators are concerned about these escalating costs. The ACCESS program offers a possible solution to both the human and fiscal concerns surrounding this problem. The intense, concentrated program enhances student academic performance

and assists him/her to pass out of remediation more quickly and thereby reduces the cost to the state. The freshman component stresses retention strategies that will ultimately lead to student persistent and an increase in graduation rates. The program hopes to eventually implement an Educator Training Institute for teachers who work with underprepared students. The Institute would provide training in effective learning strategies and offer educators some 'hands-on' experience with these strategies in their own schools in the form of a practicum. Following the briefing, Representative Ogden stated, "I want PVAMU to represent the idea written in the Texas Constitution...to be, in fact, a 'university of the first class'. I am proud of ACCESS and its accomplishments and PVAMU's pioneering efforts to improve the quality of performance exhibited by students in the Lone Star State." (For more information on ACCESS, call (409) 857-4449.



Dr. & Mrs. Charles Hines, Rep. & Mrs. Steve Ogden

LAB Continued from page 1

Wilson Building lobby and luncheons were held in the President's Dining Room.

The keynote speakers were Dr. Matthew M. Thomas, University Liaison for Product Application Technologies Group within Advanced Systems and Technology-Phantom Works at McDonnell Douglas Aerospace Division of McDonnell Douglas Corporation, St. Louis, Missouri, and Michael J. Birk, president and CEO of Tellabs Operations, Inc. Tellabs is a major telecommunications company located in Lisle, Illinois. McDonnell Douglas is co-sponsor of this year's symposium.

A highlight of this year's program included the dedication of a telecommunication systems lab to the Prairie View A&M University College of Engineering donated by Tellabs, Hewlett-Packard and Best Tronics.

The Symposium included an exhibition of "state of the art" equipment. This year, there were several workshops and presentations scheduled. Two workshops were conducted by Dr. Mohammad Ashtijou, from the Department of Electrical Engineering and Computer Science at Texas A&M University on VHDL, a very high speed integrated circuit hardware description language. Two workshops were scheduled for CAD/CAM/CAE presented by EDS Unigraphics.

The US Navy, the world leader in nuclear propulsion technology, presented Lt. Rich Pugliese in a workshop which began at 2:00 p.m., Thursday, February 6, and at 10:00 a.m., Friday, February 7.

A Piece Of Prairie View AMU History

In 1930, Bryan H. Barrows, Sr., and his wife, Alice 'Dibbles' Barrows of Bryan, Texas, sent their son Bryan Jr., to study at Prairie View A&M College to become a teacher. During his four years at PVAMC, Barrows distinguished himself in the study of education (math, physics and football). He also joined a PVAMC team was said to be among the best in the nation, and, in 1931, 1932 and 1933, they were just that.

The PVAMC team was national champion of the SWAC football conference in 1931 and 1932. The 1933 team also shared a national co-championship along with Wiley College.

Although Bryan H. Barrows Jr., was an outstanding player all four years at Bryan High School, in Bryan, Texas, the elder Barrows was surprised to see his son doing so well in college and in football. Being a "well known" businessman and entrepreneur, "Guy" Barrows, (as he was known by locals) decided to develop a mechanism by which local African Americans could go to a game to cheer for PVAMC and, of course, for his son. "Guy" developed a plan which was highly unusual for an African American during the "Jim Crow Era". While it was not

unusual for upper class Caucasian Americans to lease a train for a special event, it was highly unlikely that an African American would be able to afford or would be allowed to lease something so valuable as a train and yet, that is exactly what happened.

Bryan H. Barrows Sr. chartered a train from Bryan to Prairie View, Texas, January 1, 1932. However, this unusual transaction was not without a stipulation...Barrows would be allowed to lease a train if he was able to secure a Caucasian sponsor who would sign for him. (Please note that Barrows was still responsible for the trip financially in spite of securing sponsorship.)

Below is a copy of the actual handbill used to advertise the event. Note the smaller case items near the bottom of the handbill as they

indicate the name of the sponsor for the trip while also mentioning Guy Barrows as promoter. This particular event is also important and unusual because it occurred two years following what is commonly referred to as the Great Depression (1929).

The football teams coached by Sam Taylor are legendary at PVAMU. Witness below the record that he established in his first three seasons as coach at Prairie View A&M College.

Win/Loss Record 1931-33

1931 (9 wins, 1 loss, 1 tie)

1932 (6 wins, 3 losses, 1 tie)

1933 (7 wins, 1 loss, 0 ties)

A fast receiver and a half back on offense, Bryan H. Barrows Jr. was one of the stars of the 1930-33 teams. Also, as was the custom in those days, he played on defense (free safety) as well.

After visiting P.V. and seeing his sons team triumph, Bryan H. "Guy" Barrows Sr., Alice Barrows and a party of about one hundred fifty patrons returned to the routine of their daily lives.



**World's Largest
COLORED SPECIAL**
FASTER THAN THE SUNBEAM
ONLY ONE STOP—COLLEGE STATION—ON ACCOUNT

Football Game
ANNUAL EVENT

Prairie View Panthers vs. Alabama State

NEW YEARS DAY, JANUARY 1st, 1932, HOUSTON, TEXAS
 BRYAN TO HOUSTON, Round Trip Fare and 3 Meals.....\$2.00
 COLLEGE STATION TO HOUSTON, Round Trip Fare, 3 Meals....\$2.00
 Leaves Bryan 8 o'clock. Return leaves Houston 12 o'clock midnight.

TURKEY DINNER

Must sell 200 tickets in advance to get the Special Train and if I sell 300 tickets I can get 3 dining cars so be sure and buy your tickets at once as I have to have all the money in by Dec. 20th.

TICKETS SOLD AT—	For Information See
STAR CAFE, Grant O'Neal (Prop.)	DR. L. A. CARTER (Dentist)
ELITE BARBER SHOP	A. S. KEATTS, Realtor
Henry Crawford (Prop.)	H. K. HORNBERY
MRS. TOL SMOTHERS, JR.	(County Agent)
Burleson County	L. J. JACKSON
MISS GLADYS SCOTT	MILTON E. CALHOUN

MASS MEETINGS WILL BE HELD AT—

Second Baptist Church Tuesday Night, Dec. 15, 7:30 to 10 o'clock.
Bell ring 7:30.

A. M. E. Church Tuesday Night, Dec. 22, 7:30 to 10 o'clock.

Shiloh Baptist Church Tuesday Night, Dec. 29, 7:30 to 10 o'clock.
Final meeting.

So be sure and come and get your tickets. If you don't have all the money pay \$1.00 down and the rest by Dec. 22nd and get your ticket.

NOTICE PUBLIC:—Remember those that have bought tickets if I can't get the special train all your money will be refunded. Children under 7 years, with parents, free.

FOR FURTHER INFORMATION SEE—

DR. A. E. THOMPSON GUY BARROWS (Special Train Promoter)
Supervisor Phone No. 762
Phones No. 535 and 494.

Prairie View Colors 5c Extra. Each person must have them.



Bryan H. Barrows, Jr.
1912 - 1993

Dr. Purvis Carter Receives "Golden Apple" Award

Dr. Purvis M. Carter, professor of history, has been honored by the Association for the Study of Afro-American Life and History (ASALH). Carter has been awarded the "Golden Apple" award for exemplary loyalty and support to the *Journal of Negro History*. The ASALH is an organization initiated by Carter G. Woodson, founder of Black History Month.

Dr. Carter was presented the "Golden Apple" by Dr. Alton Hornsby, Jr., of Morehouse College, at the annual convention in October of the Association for the Study of Afro-American Life and History.

Dr. Jewel Prestage Spotlited

Dr. Jewel Prestage, dean of the Benjamin Banneker Honors College, is the subject of a feature article in the 150th anniversary issue of the *Daily Iowan*, a student newspaper from the University of Iowa. Professor Prestage received an M.A. and a Ph.D. from UI. Also, she has been elected to the National Executive Council of Pi Sigma Alpha, the National Honor Society in Political Science.

Pi Sigma Alpha (PSA) is a national political science honor society founded at the University of Texas in 1920. It has chapters in colleges and universities throughout the US. PSA meets the need of political science students and faculty members for an organization that would bring persons especially interested in the study of government into closer association with one another for mutual benefit.

Dean Prestage was inducted into Pi Sigma Alpha as a graduate student in political science at the University of Iowa, in 1953. And, she has been a charter/founding member of three chapters of the society, including Rho Nu Chapter at Prairie View, additionally serving as advisor to Rho Nu for three years.



Dr. Jewel Prestage

Faculty Members Win Kellogg Postdoctoral Fellowships

Prairie View A&M University College of Nursing faculty members, Dr. Christina Akoma, and Dr. Chloe Gaines, have been selected to receive **W.K. Kellogg Fellowships** for nurse educators on behalf of the Southern Council on Collegiate Education for Nursing. The association is an affiliate of the **Southern Regional Education Board (SREB)** and the grant's purpose is to increase the number of family nurse practitioner faculty in the region. The fellows are supported by a \$1.1 million grant from the W. K. Kellogg Foundation.

Nursing professionals in the SREB are concerned that the demand for primary care providers has resulted in an increase of nurse practitioner programs that need academically and clinically competent faculty. The project will provide the necessary educational and clinical experiences for twenty-three nurse educators in the South to study at one of three institutions: East Caro-

lina University in Greenville, North Carolina, The University of Tennessee, Memphis, or the Medical Branch in Galveston. The first class of fifteen fellows began their studies in 1996.

In addition to increasing the number of primary care providers in this region, the project will strengthen an infrastructure within nineteen institutions and local communities to support faculty practice arrangements in underserved communities. These efforts will increase access to health services in rural and inner city settings and create more favorable practice environments for collaborative arrangements.

The W.K. Kellogg Foundation was established in 1930 to "help people help themselves through the practical application of knowledge and resources to improve their quality of life and that of future generations." As a private grantmaking organization, it provides seed money to nonprofit organizations and institutions that have identified prob-

lems and designed constructive action programs aimed at solutions. Most grants are awarded in the areas of higher education; youth development; leadership; philanthropy and volunteerism; integrated, comprehensive health care systems; food systems; and rural development. Grants are concentrated in the United States, Latin America, the Caribbean and southern Africa.

Quotes Worth Remembering

"Watch your thoughts;
they become words".

"Watch your words;
they become actions".

"Watch your actions;
they become habits".

"Watch your habits;
they become character".

"Watch your character,
it becomes your destiny".

by Frank Outlaw

PVAMU'S Charles Gilpin Players Advance To Regionals

The Drama Department at Prairie View A&M University is on pins and needles these days as a result of the announcement of the American College Theatre Group that the Charles Gilpin Players have been invited to perform in Norman, Oklahoma at the Region VI competition Thursday, February 27. The Gilpin Players will present their award-winning production of "FENCES" which garnered twenty-one individual and group awards during Fall of 1996 at the Texas I & II American College Theatre Festivals. The ACTF competition is sponsored by the John F. Kennedy Center for the Performing Arts in Washington, D.C.

The Gilpin Players are among twenty-nine colleges and universities who were state winners from the five states in the Region VI area. Those states were Texas, Arkansas, New Mexico, Louisiana and Oklahoma. However, only six of the state winners were chosen for the regional festival. Other institutions of higher education chosen to perform are the University of Central Oklahoma, Northeastern State University, Texas Wesleyan University, McNeese State University and West Texas A&M University. The competition begins February 26 and ends March 1st.

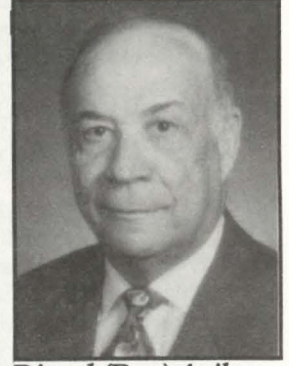
**Charles Gilpin
Players win at
Region VI**



Ann Armstrong



Erle Nye



Dionel (Don) Aviles

Gov. Bush Nominates Three To TAMUS Board of Regents

Governor George W. Bush has announced his intention to appoint three new members to the Texas A&M University System Board of Regents, which exercises general supervision and control of the Texas A&M University System.

Anne L. Armstrong, of Armstrong, Texas, serves as chairman of the board of trustees for the Center for Strategic and International Studies. A graduate of Vassar College, she was the U.S. Ambassador to Great Britain in 1976-1977 and was chairman of the President's Foreign Intelligence Advisory Board for nine years. She was awarded the Presidential Medal of Freedom in 1987 and was a member of the board of trustees of the Texas A&M University Kingsville Foundation, Inc. She is a member of the board of directors of several corporations including American Express, Boise Cascade, and General Motors. Ms. Armstrong will replace Royce E. Wisenbaker, of Tyler, whose term expired.

Erle Allen Nye, of Dallas, is president and chief executive officer of Texas Utilities Company, Texas Utilities Fuel Company and Texas Utilities Mining Company. He is also chairman of the board and chief executive of TUElectric (the principal subsidiary of Texas Utilities

Company), TU Services, Basic Resources, Inc., Chaco Energy Company and Texas Utilities Properties, Inc. In addition, he serves on the Dallas Citizens Council. He received a bachelor of science degree in electrical engineering from Texas A&M University and a doctorate of jurisprudence from Southern Methodist University. Mr. Nye will replace Mary Nan West, of Batesville, whose term expired.

Dionel E. Aviles, Ph.D., of Houston, is owner and president of Aviles Engineering Corporation which specializes in geotechnical and environmental engineering, construction materials testing, and inspection and site assessment services. A graduate of the Army War College, he retired from the U.S. Army Reserve in 1993 with the rank of Major General. He is a member of the board of trustees of the United Way of Texas, past president of the Houston Hispanic Forum, and serves on the Texas A&M University Presidents Advisory Council. He earned a bachelor's, master's, and a doctorate in civil engineering from Texas A&M University. Dr. Aviles will replace Alison Leland Briscoe, of Houston, whose term expired.

These appointments, which all expire February 1, 2003, require Senate confirmation.



COMING SOON!

Sponsored By NationsBank
Copperfield and Steeplechase Centers

February 1997

College of Nursing
Black History Program
(Month long program)

Prairie View Trail presents the
Charles Gilpin Players in a western
theme performance 5:00-6:00 p.m.
west side of campus, near PV Motel.

February 20-21 (Thursday-Friday)
College of Engineering and
Architecture Alumni Days

Prairie View Trail's **Annual Parade**
at PVAMU, 1:00 p.m., ending at the
big tent near the Billy Nicks Building.

February 13 (Thursday)
Banneker Honors College
Professional & Graduate School
Career Festival, West Wing,
Alumni Hall, 9:00 a.m.-5:00 p.m.

February 20 (Thursday), time TBA
Motorola Lab Dedication
Gilchrist Engineering Building

Prairie View Trail **Annual Chili**
Cookoff
benefitting the PVAMU Cheerleaders
1:00 p.m., at the big tent on west side
of campus.

February 19 (Wednesday)
Career Placement "Spring Career Fair"
9:00 a.m.-3:00 p.m., Billy Nicks Bldg.

February 27 (Thursday)
Charles Gilpin Players
at Region VI Theatre Competition
in Norman, Oklahoma. Contest
sponsored by the Kennedy Center for
the Performing Arts, Washington, D.C.

Black History Month Art Exhibits

Houston City Wide African American Art Exhibitions at the following sites:

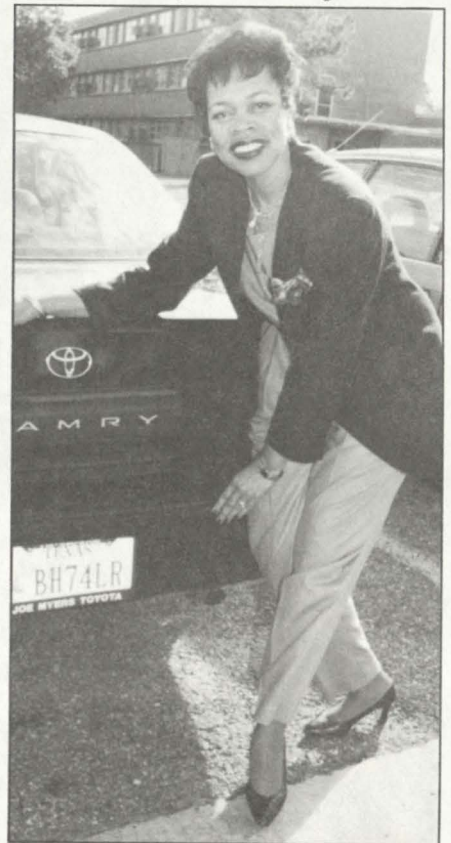
Houston Public Library
The University of Texas Health Science Center
The Transco Tower

John B. Coleman Library at Prairie View A&M University
"Brothers of War"—The exhibit will include the works of Ann Johnson, Clarence Talley and several PVAMU alumni.

MECCA Exhibit

Exhibition of works containing a religious theme sponsored by "451" and the Multicultural Education and Community Arts Organization (MECCA). The exhibit will be on display at MECCA Gallery, 1900 Kane, Houston, Texas. An opening is planned for Sunday, February 2, from 6-9:00 PM. Works by Rev. Clarence Talley, Sr., PVAMU professor of Art and Ann Johnson, instructor of Home Economics will be included.

Buy
Prairie View A&M University
License Plates
409-857-4091



University License Plates

Carolyn Bradley-Oliver, pictured above, proudly displays her University License plates. Call the Office of Institutional Development and purchase a University License Plate! Call (409) 857-4091

Tune In
to
'Partners In
Progress'
with
Bryan Barrows
Thursdays
at
10:00 a.m.

91.3 FM

For PVAMU
Events
Call
Coming Soon!
1-800-787-7826

You Open The Checking Account. We'll Open The Possibilities.

Location. Location. Location. We offer more banking locations than any other bank in Texas, with 220 banking centers and many convenient drive-thrus.

Banking At Your Fingertips. PC Banking lets you bank and pay your bills from your home computer. And you can try it FREE for 60 days!

No-Charge ATMs. NationsBank customers can get cash at over 1,100 NationsBank ATMs in Texas at no charge.†

24-Hour Account Access. Our express service lets you access your account by telephone 24 hours a day, seven days a week. Plus, you can even pay your bills by phone.

No-Check Checking. A NationsBank CheckCardSM* offers an easier alternative to writing checks. It even doubles as an ATM card.



Copperfield Banking Center **Steeplechase Banking Center**
7770 Hwy 6N • (281) 856-1901 11025 FM 1960 W • (281) 517-5420

NationsBank[®]

Offer good at Copperfield and Steeplechase Banking Centers only. © 1997 NationsBank Corporation. NationsBank of Texas, N. A. Member FDIC. *CheckCard issued upon credit approval. †Economy checking customers see schedule of fees.

Free Checking!

Right now we'll
waive the monthly fee for 6 months!
And we'll give you your first order
of wallet-size checks FREE![®]